



V
IKING









VIKING '64

Northeastern Oklahoma A & M
Miami, Oklahoma



Dr. Bruce G. Carter
PRESIDENT



DEDICATION



WILLIAM McKINLEY RUSSELL


It was a wonderful day for the Northeastern A & M College in September, 1948, when the smiling countenance of Professor Russell became a part of the permanent faculty of Northeastern A & M. The faculty and students are happy to join together to dedicate this college annual to one of the best loved teachers on the campus.

As Dean of Men, Dean Russell has been a very busy man since that September day. He teaches Marriage and Family and Psychology in a most interesting and fascinating manner. He is a man of many talents and abilities. In addition to being one of the outstanding fishermen on the campus (or in the nation), Bill Russell is also a great cook as well. He has probably achieved greater publicity as a storyteller than in any other department. His

wife, Lorraine, says the best ones are told to her when he comes in late at night. He is a great storyteller and a teacher with a great sense of humor.

Mr. Russell received his undergraduate work at Phillips University, his Master's Degree from Oklahoma State University, and has done advance work at the University of Arkansas. All this has been of great value to him as he has directed the adult education program, the testing program, and the guidance program.

Everyone agrees the campus has been a much happier and more interesting place for study and work since Mr. Russell joined the faculty. Students and faculty wish the very finest and best for the Russells during the years ahead.

A black and white portrait of Henry Bellmon, Governor of Oklahoma. He is a middle-aged man with short, dark hair, smiling broadly. He is wearing a dark suit jacket, a white dress shirt, and a dark necktie. The background is a plain, light-colored wall.

The Honorable Henry Bellmon
Governor of Oklahoma

BOARD OF REGENTS A & M COLLEGES



O. L. Lackey
Chairman



W. R. Williams
Vice-Chairman



Amos K. Bass
Secretary



Forrest McIntire



W. Elmer Harber



Robert I. Hartley



Burke Healey



H. C. Hitch, Jr.



Lew Meibergen



Earl Russell



Mrs. S. F.
Ditmars



G. Ellis Gable
Chairman



R. L.
Crowder, Jr.
Vice-Chairman

REGENTS FOR HIGHER EDUCATION



Bob F. Allee



Guy M. Harris



T. G. Sexton
Administrative
Assistant



Dr. E. T.
Dunlap
Chancellor

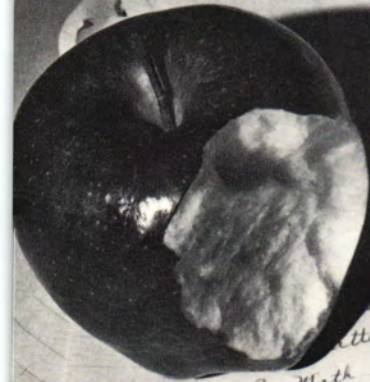


John J.
Vatter, Jr.
Secretary



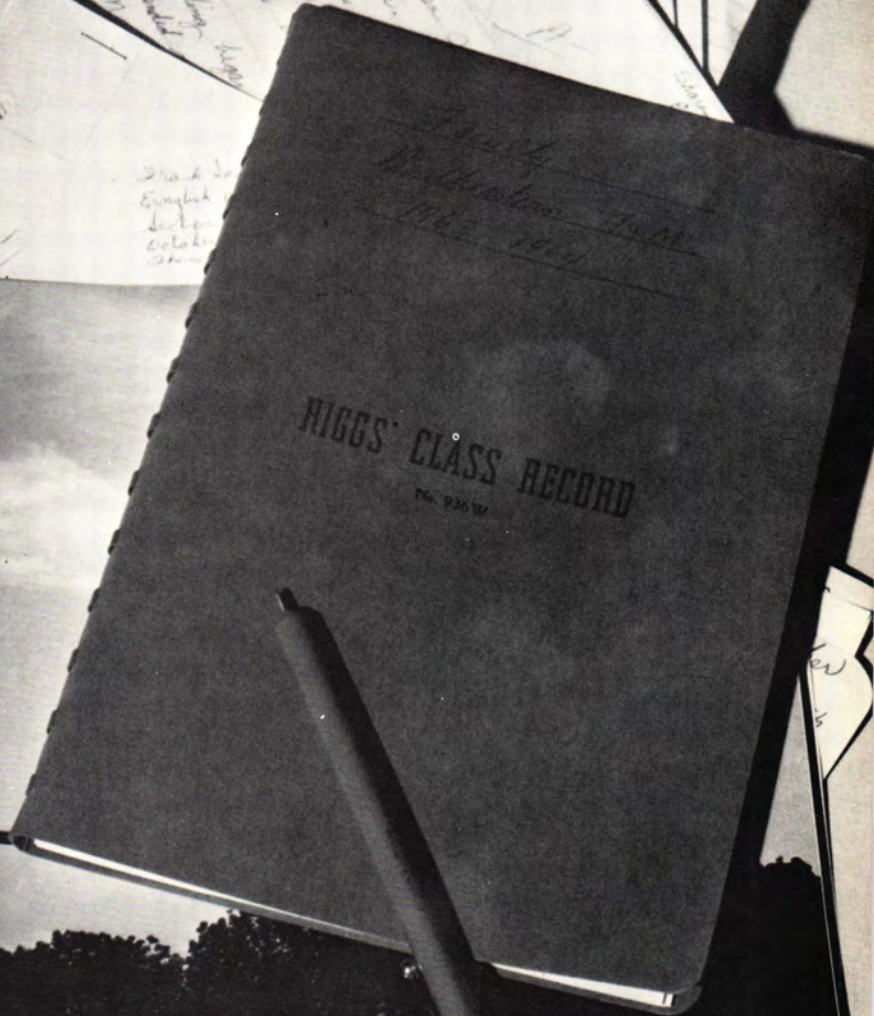
Wharton
Mathies

ADMINISTRATION



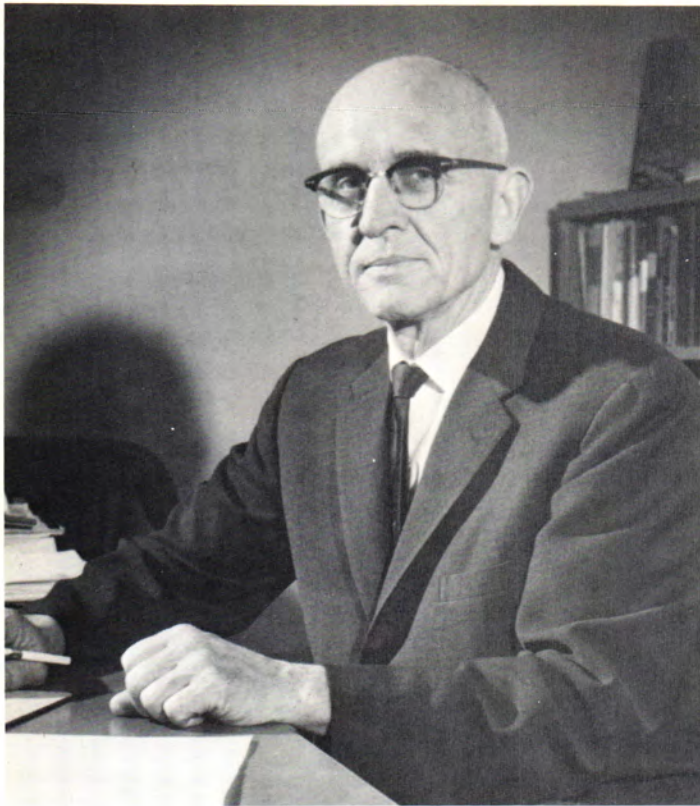
III. At an early age
A. I had different
B. I gained some

IV. I am now a
College.
A. I am present
B. I hope that
life will be
a & m Col



THE Oklahoma Teacher

OCTOBER, 1963



Dr. Cecil Ferree
Dean of Instruction



Elizabeth Hutts
Registrar



William Russell
Dean of Men



X17
44

Charles Angle
Dean of Student Affairs

X16
47



Mary Roddy
Dean of Women



Mildred Carter
Business Manager



Robert Anderson
English



Elmo Benedict
Industrial Education



J. R. Bond
Journalism



Doris Burnes
Foreign Languages



Dyer Hall

Max Buzzard
Physical Education



Merrill Chaney
Woodworking



Gladys Copen
Business



Oscar Coston
I.B.M. Data Processing





Frank Cunningham
Chemistry



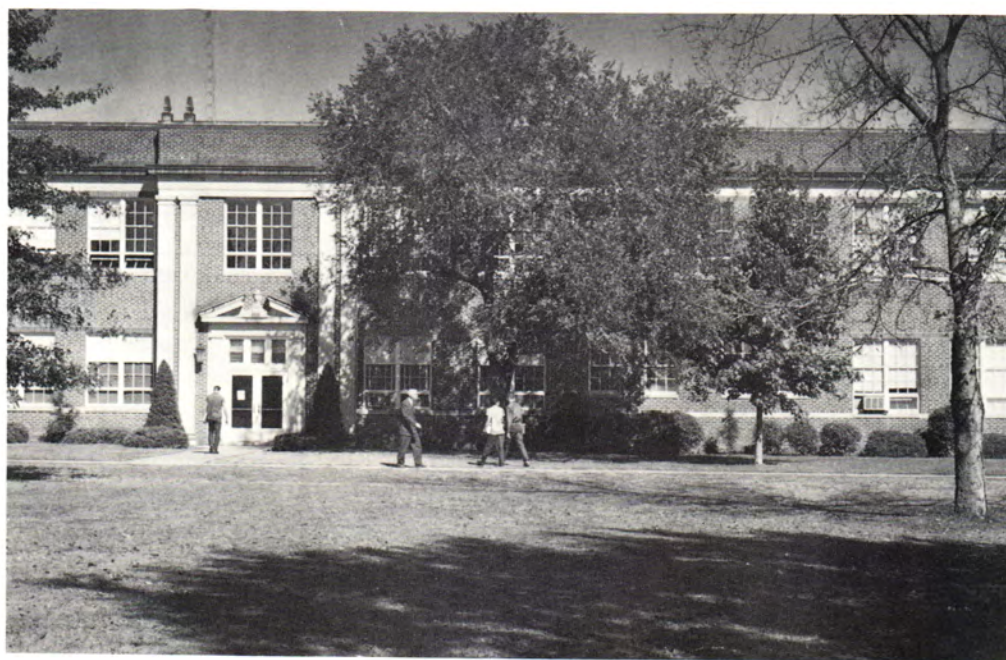
Eldon Divine
Industrial Education



Carl Finke
Business



Bob Foote
Math



Life Science Building

Waymon C. Gibson
Biological Sciences



E. J. Grieshaber
Political Science



Charles Grimsley
Speech



John M. Hammons
English





Myrna Hammons
English



Capt. Bobby Hayes
Air Science



John Hazelton
Speech



Joe Holland
Business



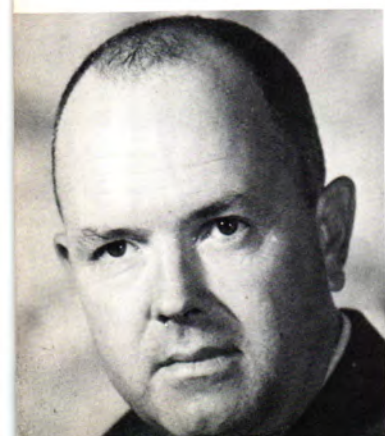
Bruce G. Carter Student Union

Lt. Col. Hardy L. Holt
Air Science

Capt. Patrick Keith
Air Science

Leland Kardis
Industrial Education

Marie Lair
Librarian





Myra Lamb
Physical Sciences



Clark McQuigg
Industrial Education



Dr. Weldon E. Marcum
Bible



John J. Micka
Agriculture



Administration Building

J. C. Miller
Agriculture

Walter Moore
I.B.M. Data Processing

Oran E. Need
Math

Bruce Owen
Speech and Dramatics





Kathryn Paige
Art



Elizabeth Paine
Librarian



Douglas Payton
Music



Kenneth Richards
Music



Gymnasium Auditorium

S. Albert Robertson
Athletic Director



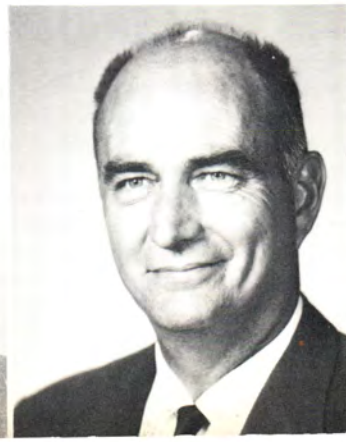
Jack Rucker
English



Melvin Shipley
Math



Leonard Smith
Industrial Education





Mable Speaker
Home Economics



Robert E. Swanson
Music



Bonnie Synar
Home Economics



Harry Synar
Agriculture



President's Home

Alfred L. Taylor
I.B.M. Data Processing



John Thiesing
Math



Homa S. Thomas
Business



J. D. Wilhoit
Drafting

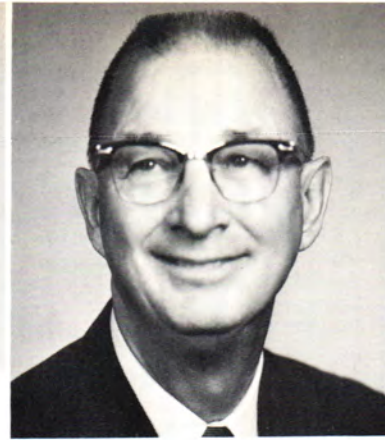




Thomas Baird
Air Science



Joanne Blevins
Finance Clerk



Don Dyer
Student Housing Director



Marion Dyer
Student Union Director



Beulah Elrod
Dyer Hall Hostess



Peggy Ingle
Secretary to President



Sgt. Richard Overholser
Air Science

Grace Painter
Finance Clerk



Pat Smith
Finance Clerk



Lotus Sprague
Commons Hall Hostess

A. L. Taylor
I.B.M. Data Processing

Leta Thiesing
Norse Star Director

Virginia Lee Wilson
Norse Star Choreographer



SOPHOMORES



Foster Adams
Art
Owasso



Clay Allen
Journalism
Cardin



Don Allen
Business
Miami



Don Anderson
General
Hominy



Carol Armstrong
Business
Tulsa



Patricia Armstrong
Home Economics
Seneca, Missouri

Terry Arning
Industrial Education
Chelsea



Jerry Austin
Business
Afton



Bob Azbill
Business
Collinsville



Garry Baker
Agriculture
Guymon



Harold Bengston
Pre-Vet
Claremore



Bob Bethell
Speech
Tulsa



Joyce Billups
Business
Miami

Robin Bim
Business
Bartlesville

Carol Bonar
Home Economics
Tulsa

John Bradsher
Technical Education
Hominy

Charles Branca
General
Glenridge, New Jersey

James Brewer
Zoology
Tulsa



Deanne Brewster
Elementary Education
Miami

Linda Brown
Mathematics
Sand Springs

Lowell Brown
Business
Tulsa

Lloyd Buffalo
Industrial Education
Galena, Kansas

Jeanne Burger
Speech
Tulsa

Thelma Burke
Elementary Education



Carolyn Burris
Home Economics
Grove



David Buzzard
Business
Quapaw



Charles Campbell
Music
Miami



Eugene Campbell
Industrial Education
Tulsa

Jack Cates
Agriculture
Tulsa

Jim Chambers
Education
Miami

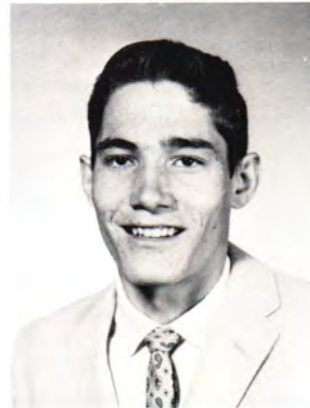
Charles Chaney
Engineering
Nowata



Jerry Chestnutt
Business
Chetopa, Kansas



Glen Clarkson
Industrial Education
Bluejacket



Janice Clay
Social Science
Miami

Stephen Colclasure
Education
Collinsville

Curtis Collins
Industrial Education
Welch



Dale Coltharp
Business
Commerce

Larry Coltrane
Agriculture
McCune, Kansas

Bob Combs
Mathematics
Collinsville

Kenneth Conduff
Mathematics
Wyandotte

Sharon Cook
Speech Therapy
Drumright

Terry Cook
General
Shawnee



Pam Cornell
Elementary Education
Oklahoma City

Judy Cottam
Elementary Education
Miami

Arthur Cousatte
Business
Miami



Janice Cox
Psychology
Miami

Shirley Cox
Art
Miami

Charles Craig
Mathematics
Miami



Nancy Crissman
Music
Vinita



Gene Crockett
Journalism
Ficher



Nancy Crockett
Education
Miami



Ann Crowl
Pre-Med
Jay

John Crowley
Agriculture Education
Seneca, Missouri

Leo Culver
Psychology
Commerce

James Curry
Animal Husbandry
Sapulpa



Jerry Custer
Engineering
Wann



Gary Davis
Business
Tulsa



Judy Davison
Business
Henryetta

Dennis Delozier
Pre-Vet
Adair

Joe Dickerson
Business
Vinita



Jim Dixon
Political Science
San Francisco, California



Maxine Dobbs
Business
Miami



Linda Douglas
General
Tulsa

Wayne Douthit
Business
Fairland



Ed Drake
Business
Adair



Tommie Duffield
Elementary Education
Jay



Nancy Dufford
Business
Tulsa



Earl Dunkelberger
Speech
Wakita



Neva Edwards
Business
Miami



Linda Elder
Pre-Nursing
Western Springs, Illinois



Mike Elliott
Industrial Education
Miami



Jack Elsey
Business
Miami



Jerry Elsner
Pre-Med
Crete, Nebraska



Kenna Embree
Business
Hominy



Leonard Eulitt
History
Miami



Richard Evans
Interior Decorating
Miami

Clyde Faulkner
Law
Bartlesville

Didrick Fegley
Pre-Med
Baxter Springs, Kansas

Benton Fielder
Pharmacy
Dewey



Calvin Flaharty
Agronomy
McCune, Kansas



Richard Foreman
Forestry
Miami



Charles Foster
Engineering
Miami

Bill Frisbie
Psychology
Tulsa

Wayne Fry
Education
Owasso



John Fuser
Animal Husbandry
Afton



Jerry Garrison
Agriculture
Stilwell



Gary Garton
Journalism
Miami

Gerald Gay
Business Education
Adair



Grady Gaylord
Agriculture
Tulsa



Larry Gibson
Pre-Law
Bartlesville



Jane Gilman
Home Economics
Seneca, Missouri



Sandy Goff
Speech
Bixby



James Goyer
Industrial Education
Salina



Bill Greaves
Industrial Education
Miami

John Greaves
Drafting and Design
Miami



Larry Green
Business
Miami



Richard Green
Social Science
Vinita



Doug Gregory
Business
Shawnee



Sandra Gress
Arts and Science
Miami



George Grigsby
General
Miami

Mike Grimes
Pre-Vet
Grove

Bill Grossman
Pre-Vet
Pryor

Sharon Hailey
Elementary Education
Miami



James Hale
Pre-Dental
Grove



Charles Haley
Industrial Education
Salina



Eugene Hall
Business
Goodman, Missouri

Ruth Hamlin
Music
Quapaw

Jim Hancock
Psychology
Tulsa



Terry Hardesty
Business
Oronozo, Missouri



Kent Hardgrave
Business
Henryetta



Frank Hardin
General
Checotah

Carol Harmon
Business
Sacramento, California



James Hart
Business
Tulsa



Perry Hauser
Agriculture
Miami



Danny Haynes
Business
Oklahoma City



Mary Ann Hays
Music
Grove



George Hazlett
Industrial Education
Pawhuska

Delbert Heaps
Psychology
Tulsa



Terry Hedeman
Animal Husbandry
Lockwood, Missouri



Dee Heydt
Home Economics
Miami



Thomas Heydt
Business
Miami



Barry Heyl
Arts and Science
Bartlesville



Carol Hilliard
Elementary Education
Anderson, Missouri



Dale Hoag
Industrial Education
Salina

Lonnie Hobbs
Pre-Med
Tulsa

Gary Hobson
Business
Wyandotte

Gerald Hollaway
Dentistry
Okmulgee



Sammy Holman
Agriculture
Locust Grove



Robert Huggins
Chemical Engineering
Grove



Linda Hulsey
Elementary Education
Commerce

Jana Lyn Irwin
Fashion Merchandise
Miami

Bill Jagers
Agriculture
Chicago, Illinois



Herschel Jaggars
Pre-Vet
Chouteau



Betty Johnson
Business Education
Afton



June Johnson
English
Miami

LeRoy Johnson
Agriculture
Afton



Lois Johnson
Business Education
Afton



Norman Johnston
Social Science
Quapaw



Cheryl Jones
English
Miami



David Jones
Business
Miami



Donald Jones
Industrial Education
Miami

Tony Jury
Marketing
Collinsville



Johnny Kennedy
Business
Henryetta



Janeth Kerpan
Pre-Med
North Chicago, Illinois



Richard Key
Mathematics
Miami



Kathy Kidd
Accounting
Vinita



Dale King
Industrial Education
Seminole



Jerry Klos
Pre-Law
Vinita

Harry Knipe
Agriculture
Holland, Michigan

Mary Korthase
Business
Vinita

Ted LaRue
Industrial Education
Tulsa



Richard Lawson
Business
Big Cabin

Bill Layton
Political Science
Fairland

Gerald Layton
Elementary Education
Fairland

Wayne Leake
Industrial Design
Miami

Jack Lewis
History
Coweta





Jane Lewis
Elementary Education
Fairland



Douglas Leyh
Business
Joplin, Missouri



John Liddle
Psychology
Azasa, California

Sue Linn
Business
Nowata



George Lipari
Civil Engineering
Passaic, New Jersey



Mary Lisle
Home Economics
Tulsa



Judy Little
Business
Miami



Bertha Lorenz
Elementary Education
Tulsa



Gary Lunnon
Engineering
Tulsa



Bob McCullough
English
Mt. Dora, Florida



Diane McCune
Home Economics
Jay



Dixie McKinzie
Home Economics
McCune, Kansas



Jim McKinzie
Animal Husbandry
Miami



Jim McLean
Psychology
Tulsa



Richard McSarrow
Wild Life Conservation
Tulsa



Linda Madden
Business
Pryor



Cheryl Martin
Elementary Education
Vinita



Jo Linda Martin
Business
Miami

Kay Martin
Business
Miami



Pat Mauller
Home Economics
Commerce



Peggy Meyer
Business Education
Miami



Mike Milward
Psychology
Alexandria, Virginia



Cindy Mitchell
English
Oklahoma City



Marion Mitchell
Agriculture
Anderson, Missouri



Charles Mobley
Pre-Med
Vinita



Virginia Montgomery
Education
Picher



Stephen Moore
Business
Miami

William Moore
Engineering
Picher



John Moorman
Business Education
Perkins



Lloyd Moorman
Business
Stillwater



Kelly Moot
Business
Bartlesville



Thomas Mustain
Elementary Education
Afton



Sharon Nelson
English
Tulsa



Kenneth Neptune
Business
Bartlesville

Craig Nichols
Industrial Education
Beatrice, Nebraska



Betty Nicholson
Elementary Education
Miami



Hiawannah Noel
Business Education
Miami



Pamela Nuckolls
Elementary Education
Grove



Dennis O'Loughlin
Mechanical Engineering
Miami



Pat Osborn
Elementary Education
Picher

Guy Owen
Business Administration
Miami

Chester Palmer
Agriculture
Miami

Larry Pendergraft
Business
Miami



Janet Piguet
Home Economics
Vinita



William Plotts
Pre-Vet
Bloomington, New Jersey



Linda Potts
Psychology
Tulsa

Kenneth Powell
Agriculture
Baldwin, New York

Ernest Price
Business Administration
Quapaw



Glenda Quinton
Home Economics
Locust Grove

Ellen Raines
Business
Commerce

Edna Ramsey
Art
Owasso

Robert Ransom
Agriculture
Wakita

Ronald Remke
Conservation
Bartlesville

Bob Pench
Industrial Education
Tulsa



Paul Roberts
Agriculture
Westville

Rae Roberts
Business
Nowata

Donna Robinson
Education
Miami

Doris Robinson
Physical Therapy
Alluwe

Richard Romans
Architecture
Tulsa

Janet Ropp
Business
Miami



Vonda Rose
Art
Tulsa



Beverly Ross
Psychology
Collinsville



Clarence Ruby
Civil Engineering
Muskogee



Julia Sanders
General
Claremore

Nancy Schooley
English
Quapaw

Louise Schoonover
Journalism
Tulsa

Carolyn Schubert
Business
Seneca



John Schumacher
Business Administration
Welch



Randy Scott
Business
Sapulpa



Larry Shackelford
Music
Miami

David Shaw
Forestry
Collinsville

Larry Sherrell
Industrial Education
Grove



David Sigsworth
Journalism
Scotia, New York

Brad Smallwood
Pre-Med
Miami

Harold Smart
Psychology
Nowata

Connie Smith
Nutrition
Tulsa

Gary Smith
Engineering
Vinita

Robert Sodegren
Arts & Science
Dayton, Ohio



Janey Sperry
Elementary Education
Jay

Lonnie Spunaugle
Engineering
Bluejacket

Frank Steele
Business Management
Commerce

James Stines
Business
Miami

Alex Stoner
Agriculture
Seneca

Saundra Streater
Dietetics
Wewoka



Kenny Sudar
Mechanical Engineering
Tulsa



Jerry Sutherland
Political Science
Nowata



Vivian Swanson
Home Economics
Ericson, Nebraska



Sarah Tatum
Home Economics
Tulsa



Gary Taylor
General
Dewey



Robert Taylor
Engineering
Miami

John Teague
Industrial Education
Miami



Mary Terrill
Home Economics
Collinsville



Michael Thrailkill
Poultry
Southwest City, Missouri



Larry Treece
Social Science
Miami



Marvin Tunnell
Engineering
Miami



Donna Turney
Business
Sand Springs



William Tusing
Dental
Okmulgee

James Van Wagner
General
Shawnee

Robert Van Winkle
Engineering
Nowata

Beverly Vincent
Biology
Fairland

LeAnne Walker
Political Science
Miami

Viola Walker
Elementary Education
Welch



Linda Wallace
Home Economics
Lenapah

Nina Ward
English
Picher

Jane Warford
Business
Vinita

Judy Washington
Elementary Education
Claremore

Larry Wells
Electrical Engineering
Bartlesville

Edward Whistler
Business
Dewey



Gertrude Williams
Elementary Education
Chetopa

Steve Williams
Business
Afton

Bill Wilson
Biological Science
Wyandotte



John Wingard
Business
Bartlesville

Sandra Wojahn
Home Economics
Fairland

Ruth Ann Wolf
English
Miami

Kenneth Wolfkill
Industrial Education
Disney

Ronald Wood
Industrial Education
Tulsa

Jim Woodworth
Forestry
Stark, Kansas



Ronald Wooldridge
Business
Miami

Raymond Worrell
Industrial Education
Collinsville

Dorothy Wyer
Education
Miami



Thomas Wynn
Industrial Education
Welch



Linda Wyrick
Business
Miami



Stephen Young
Forestry
Butler, New Jersey

Robert Dew
Business Management
Oklahoma City



Darryl Edenfield
Business
Jacksonville, Florida



Emory Harrison
English
Cookeville, Tennessee



Raylene Johnson
Business Education
Afton



Ronnie Price
Business
Picher



Kennie Silver
Agriculture
Belton, Missouri

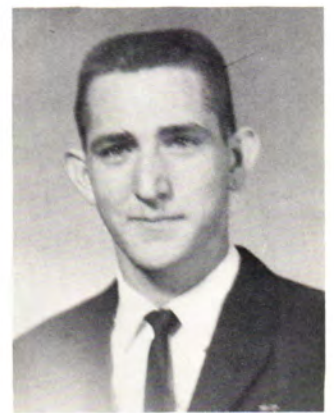
Warren Sinclair
Business
Jacksonville, Florida



Nancy Wadkins
Elementary Education
Siloam Springs, Arkansas



Ronald Walker
Agriculture Education
Pryor



John Watson
Pre-Med
MacClenny, Florida



John B. Williams
Hotel and Restaurant
Administration
Miami



Bill Zingg
Arts and Science
Tulsa



Gazing can be fun.

FRESHMEN





Bob Abernathy
Business
Picher
Youness Ahmadian
Engineering
Tehran, Iran
Mike Akin
History
Miami

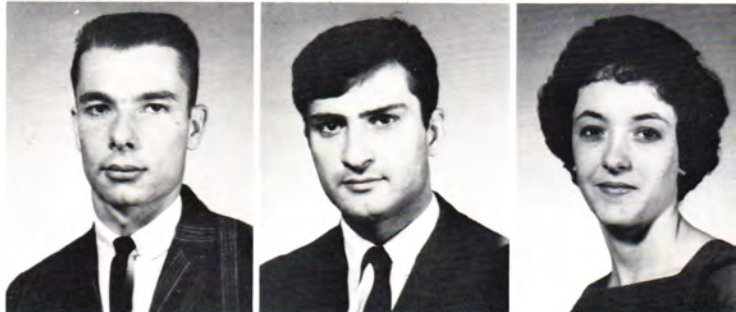


Dick Albro
Business
Miami
Sharron Allen
Physical Education
Miami
Claudette Allgood
IBM Computer
Muskogee

Leo Altebaumer
Business
Miami
Mary Anderson
Social Science
Miami
Robert Ankersheil
Arts and Science
Tulsa



Bill Archibald
Business
Baxter Springs, Kansas
Mohammad Ardekani
Pre-Med
Abadan, Iran
Elizabeth Arnold
Business
Miami



Tom Arnold
Industrial Education
Miami
Judy Arthur
Business Education
Fletcher
Larry Arthur
IBM Computer
Fletcher

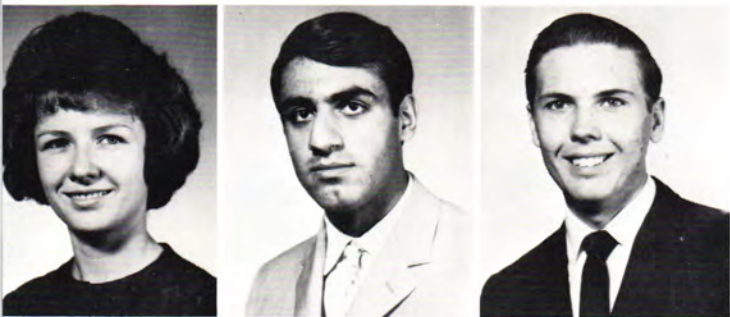


Frankie Ash
Industrial Education
Miami
Jamshid Attar
Electrical Engineering
Shiraz, Iran
Ann Atchley
Speech
Pryor

Don Azbill
Arts and Science
 Collinsville
 Dale Bachman
Animal Husbandry
 Miami
 Bob Baird
Mechanical Engineering
 Miami



Jan Baird
General
 Henryetta
 Leon Baker
Business
 Aurora, Missouri
 Richard Ball
Business
 Miami

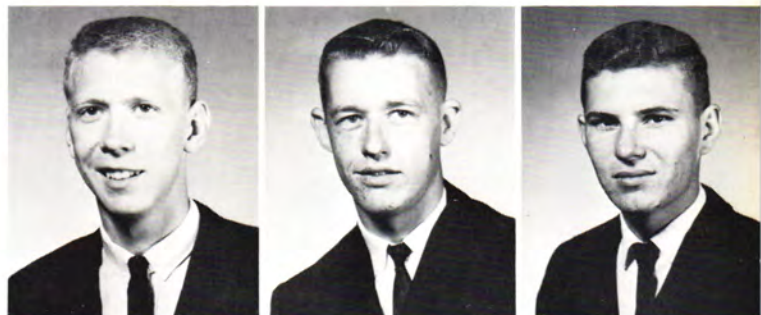


Sue Ball
Business
 Miami
 Feridoon Barkehanai
Engineering
 Tehran, Iran
 Mike Barnes
Industrial Education
 Tulsa



Linda Barrett
Home Economics
 Miami
 Vicki Baugh
Social Work
 Grove
 Ronnie Beard
Arts and Science
 Miami

Jim Beaty
Business
 Tulsa
 Bruce Bell
Animal Husbandry
 Grove
 Bruce Benedict
Forestry
 Miami



Jerry Berry
Industrial Education
 Grove
 Danny Bilby
Business
 Tulsa
 David Biles
Animal Husbandry
 Ramona





Bob Bitting
Psychology
Tulsa
Janice Bland
Elementary Education
Fairland
Robert Blizzard
Mathematics
Miami



Roy Blizzard
Mathematics
Miami
Floyd Boen
Engineering
Collinsville
Barry Boethin
General
Tulsa

Steve Boethin
Engineering
Tulsa
Kenneth Bond
Industrial Education
Vinita
Dian Boyd
Elementary Education
Pryor



Sharon Bradley
Business
Pryor
Frances Branstetter
Elementary Education
Nowata
Ronnie Brasel
Pre-Vet
Drumright



Darlene Brewer
Arts and Science
Miami
Loveta Brewer
Business
Miami
Marie Brewer
Arts and Science
Miami



Phil Bright
Psychology
Tulsa
Dale Brock
Industrial Education
Concoran, California
Danny Brock
Chemical Engineering
Fairland

Gary Brooks
Industrial Education
 Commerce
 Karl Brooks
Electronics
 Chelsea
 Jackie Brookshire
Business
 Miami



Gloria Brown
English
 Miami
 Paul Bryant
Industrial Education
 Wewoka
 June Budiselic
Business
 Baxter Springs, Kansas



George Bulo
Geology
 Santa Cruz, Bolivia
 Sherry Bumgardner
Government
 Savannah, Georgia
 Marc Bunnell
Engineering
 Pryor



Carol Burden
Business Administration
 Nowata
 Barbara Burke
Home Economics
 Owasso
 Linda Burnside
Home Economics
 Bluejacket

Doyle Burroughs
Engineering
 Bluejacket
 Johnnie Burrows
Arts and Science
 Columbus, Kansas
 Charles Burwell
Speech
 Muskogee

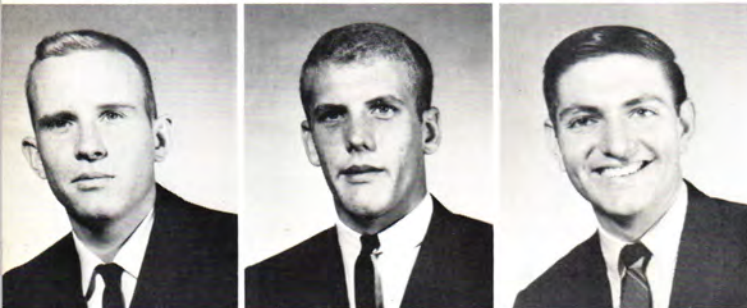


Betty Bussey
Business
 Miami
 Johnnie Buttram
Psychology
 Quapaw
 Linda Byers
English
 Tulsa





Linda Cameron
Business
 Miami
 Mike Campbell
General
 Vinita
 Homer Canada
Business
 Johnson, Kansas



Edward Canaday
Arts and Science
 Tulsa
 Robert Carruth
Business
 Tulsa
 John Carter
Political Science
 Miami

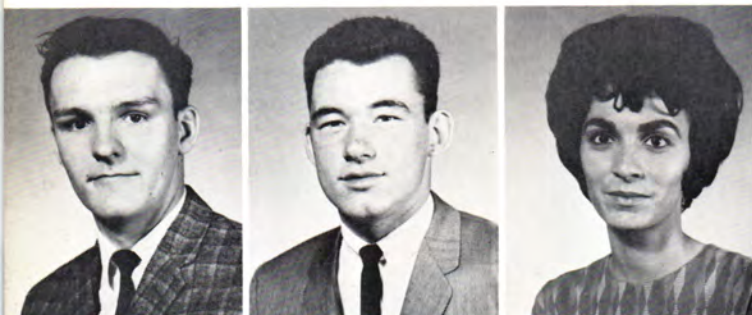
Danny Castle
Agriculture
 Tulsa
 Judy Chaney
Business
 Tulsa
 Mary Choate
English
 Miami



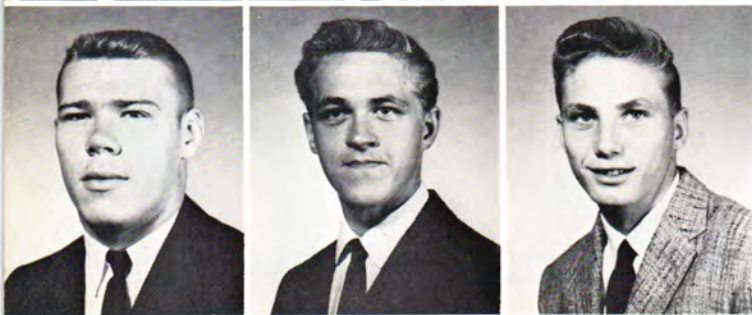
Ronald Cichon
General
 Bartlesville
 Joe Clapp
Arts and Science
 Miami
 Fred Clark
Mathematics
 Coffeyville



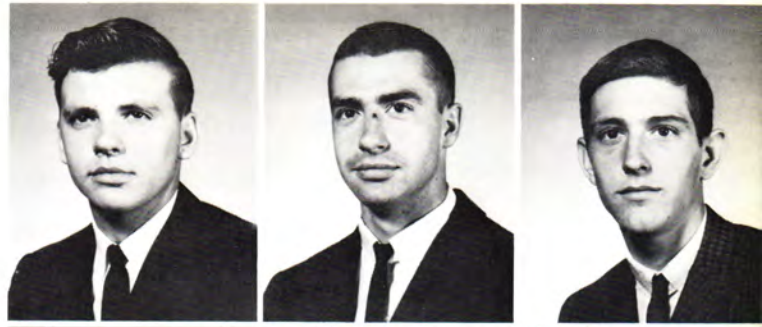
Mark Clark
General
 Kiefer
 Bill Clingan
Business
 Hobart, Indiana
 Janice Clinkenbeard
IBM Computer
 McAlester



John Cobb
Business
 Derby, Kansas
 Fred Coble
Electronics
 Miami
 Gary Coffey
Pre-Vet
 Coffeyville



Ronald Coger
Agriculture
 Grove
 Ronald Coker
Art
 Okeechobee, Florida
 Charles Cole
Business
 Tulsa



James Colpitt
Agriculture
 Collinsville
 James Coonfield
Arts and Science
 Copan
 Louise Cordry
Arts and Science
 Vinita



Robert Cossart
Social Science
 Commerce
 Mary Cozart
Business
 Vinita
 Betty Crafton
Elementary Education
 Fairland

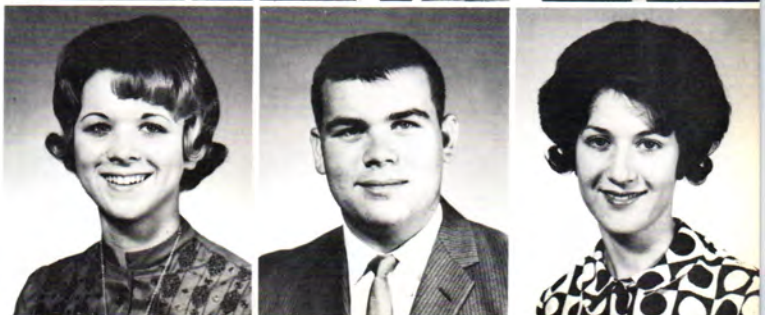


William Crafton
Business
 Fairland
 Carolyn Cronk
Psychology
 Sapulpa
 Joe Cross
Mathematics
 Tulsa

Donna Crow
Business
 Miami
 Rex Crumpton
Business
 Tulsa
 Lloyd Crumrine
Psychology
 Miami



Carole Cumption
Psychology
 Commerce
 Thomas Curnutte
History
 Miami
 Pat Curry
Arts and Science
 Jay





Lester Daniels
Business
 Tulsa
 Delores Davie
Education
 Tulsa
 Jack Davis
Architect
 Miami

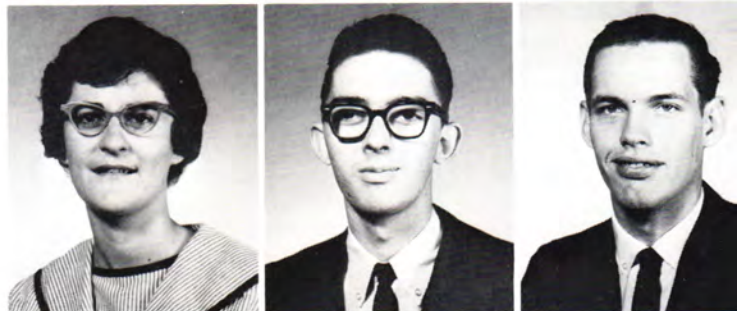


Janice Dawes
Business
 Pryor
 Stanley Denham
Pre-Med
 Satelette, Florida
 James Denny
Industrial Education
 Miami

John Deuser
Data Processing
 Tulsa
 Ed Dirani
General
 Jordan
 Dana Dixon
Mathematics
 Miami



Madolyn Dobbs
Business
 Miami
 Raymond Doddridge
Industrial Education
 Owasso
 Jackie Dale Dryden
Arts and Science
 Pryor



Gary Duffield
Industrial Education
 Albuquerque, New Mexico
 Barbara Duncan
Home Economics
 Haskell
 Norma Duncan
Business Education
 Spavinaw



Thresa Dunlap
General
 Bartlesville
 Stephen Durall
Industrial Education
 Bartlesville
 Dianne Edwards
Business
 Miami

John Edwards
*Business
 Commerce*
 Lee Edwards
Business Administration
 Bartlesville
 Mohamed Hasan Ehsani
Engineering
 Tehran, Iran



Phillip Eick
Arts and Science
 Miami
 Lynn Ellington
Elementary Education
 Miami
 Darel Elmore
Forestry
 Sapulpa



Basema El-Yacouby
Economics
 Amman, Jordan
 Anna Enoch
Education
 Wyandotte
 Barry Epperson
Pre-Med
 Bluejacket



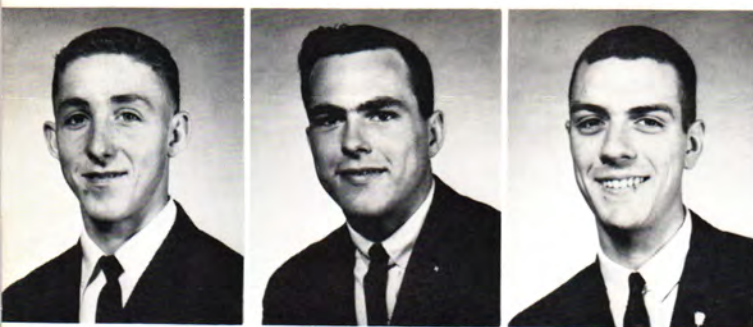
Gary Epperson
Mathematics
 Bluejacket
 Jadeen Epperson
Business
 Grove
 Gary Evans
Pharmacy
 Owasso

Hollie Evett
General
 Tulsa
 Rodney Fahnestock
Business
 Miami
 Cheryl Fairman
Elementary
 Miami



Felix Faller
Agriculture
 Yucatan, Mexico
 Jerry Farrar
Industrial Education
 Broken Arrow
 David Farrimond
Industrial Education
 Tulsa





Dwight Faulkner
Engineering
 Adair
 Elmer Findley
Industrial Education
 Tulsa
 Ted Fisher
Horticulture
 Tulsa



Harold Fleig
D.D.S.
 Westville
 Jayne Floyd
Business
 Chelsea
 Dennis Foster
Pre-Law
 Commerce

Brenda Francis
Business
 Collinsville
 Alan Fraser
Pre-Med
 Tulsa
 Mary Freeman
General
 Commerce



Mike Fritz
Drafting
 Vinita
 Deborah Frogue
IBM Computer
 Picher
 Judy Clair Fuller
Art
 Oklahoma City



Ouida Furnas
Business Education
 Miami
 Donald Gaddy
Business
 Sperry
 Charles Galyean
Chemistry
 Vinita



Don Gammon
Business
 Tulsa
 Cheryl Garner
Business
 Baxter Springs, Kansas
 Fred Gearhart
Arts and Science
 Alexandria, Virginia

Burl George
Engineering
 Afton
 Collis Geren
Science Education
 Commerce
 Larry Gillespie
Industrial Education
 Miami



Lou Ann Gilliam
Music
 Tulsa
 David Giyer
Arts and Science
 Miami
 Charles Gladden
Business
 Tulsa



Phil Golloway
Forestry
 Tulsa
 Flo Gonzales
Business
 Mesquite, New Mexico
 Mike Goodman
General
 Fairland



Larry Gray
Arts and Science
 Fairland
 Marvin Gray
Pre-Vet
 Fairfax
 Raymond Green
Engineering
 Miami

Diana Griffin
General
 Tulsa
 Jim Griffin
Arts and Science
 Bartlesville
 Carolyn Grooms
Business
 Commerce



Helen Grumbien
Accounting
 Afton
 Ali Habashi
Refrigeration
 Hamburg, Germany
 Jim Haddock
Pre-Vet
 Tulsa





Paul Haggerty
Commercial Art
 Tulsa
 Chuck Hamilton
Industrial Education
 Hobart, Indiana
 John Hanoch
Business
 Tulsa



Harold Hanson
English
 Owasso
 Don Hanst
Business
 Lockney, Texas
 Fred Harding
Engineering
 Big Cabin

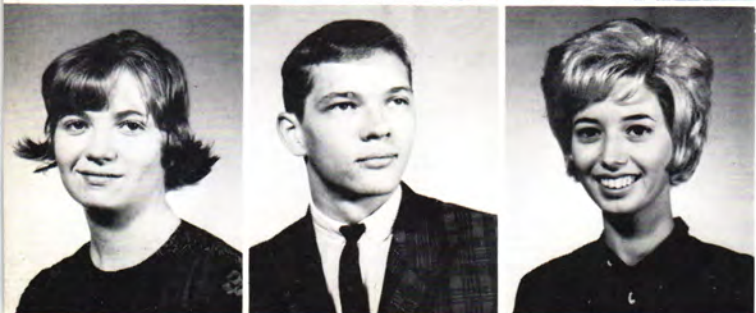
Ann Harper
Business
 Sperry
 Deanna Harrell
Elementary Education
 Bartlesville
 Kendall Harrell
Music
 Chelsea



Bonnie Harrington
Elementary Education
 Fairland
 Linda Harrison
Business
 Adair
 Sharon Hartman
Elementary Education
 Miami



Janet Hartman
Business
 Bartlesville
 Don Haynes
Business
 Sapulpa
 Richard Haynes
Business
 Sapulpa



Linda Helmick
Pre-Med
 Miami
 Jim Hemphill
Music
 Tulsa
 Phyllis Hendricks
Business
 Nowata

Bill Hendrickson
Animal Husbandry
 Adair
 John Henning
Pre-Dental
 Melbourne, Florida
 Charles Herndon
Industrial Education
 Vinita



Billie Hicks
Business
 Commerce
 Gerald Hicks
Industrial Education
 Tulsa
 David Hiebert
Engineering
 Miami



John Hildebrand
English
 Miami
 Emmett Hixson
Personnel
 Bartlesville
 David Holden
Engineering
 Broken Arrow



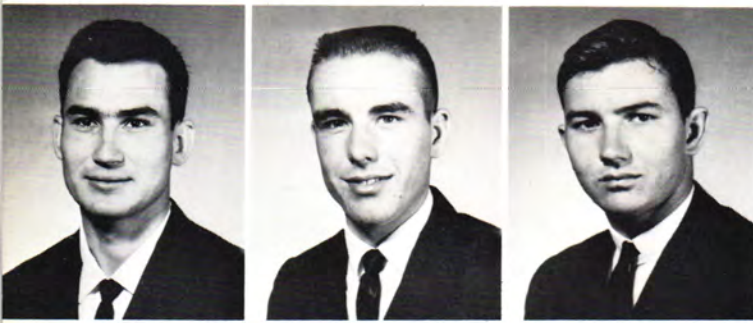
Carole Holder
Business
 Drumright
 Larry Ann Holley
Business Education
 Chelsea
 Linda Holt
Language
 Miami

Mike Horne
Business
 Jacksonville, Florida
 Larry Howard
Accounting
 Bartlesville
 Berry Hubbard
Business
 Drumright



Homer Huckaby
Engineering
 Pryor
 Thomas Huffman
Engineering
 Nowata
 Jim Hufford
Pre-Med
 Nowata



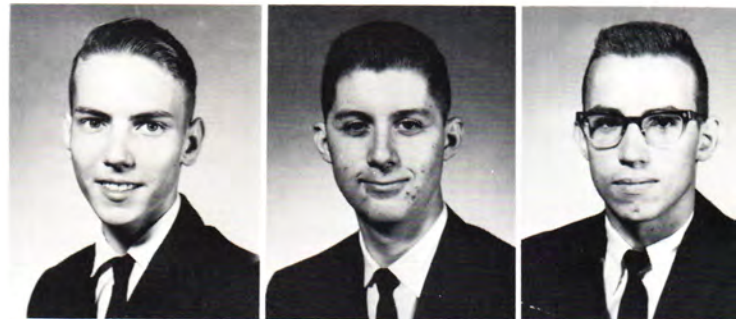


Eugene Hulsey
Arts and Science
 Commerce
 Edward Humble
Agriculture
 Nowata
 Gary Ice
History
 Miami



Judy Irby
Arts and Science
 Tulsa
 Billy Jackson
Animal Husbandry
 Tulsa
 Eddie Jennings
Journalism
 Bartlesville

Allen Johnson
Chemical Engineering
 Bartlesville
 Jim Johnson
Business
 Tulsa
 Joe Johnson
Agriculture
 Vinita



John Johnson
Mathematics
 Grove
 Kayee Johnston
Architectural Drafting
 Tulsa
 Sue Johnston
Elementary Education
 Miami



Glenna Jones
Business
 Anderson, Missouri
 Leon Jones
Mathematics
 Vinita
 Linda Jones
Education
 Miami



Nettie Jordan
Business
 Miami
 Edward Keah
Engineering
 Miami
 Freda Keller
Business
 Dewey

Karen Lynn Kellogg
Art
 Miami
 Nancy Kelly
Elementary Education
 Afton
 Linda Kennon
Home Economics
 Tulsa



Margaret Ketchum
Home Economics
 Mounds
 Jack King
Industrial Education
 Wyandotte
 Wayne King
Industrial Education
 Tulsa



Dean Kinion
Industrial Education
 Miami
 Larry Kissee
Business
 Miami
 Nancy Klaus
Home Economics
 Fairland



John Klotz
Physical Education
 Del City
 Deeann Knight
Pre-Vet
 Tulsa
 John Kruithof
Medical Technician
 Miami

Kay Lacy
Arts and Science
 Miami
 Andrea Laffoon
Business
 Drumright
 Bill LaFortune
Advertising
 Tulsa

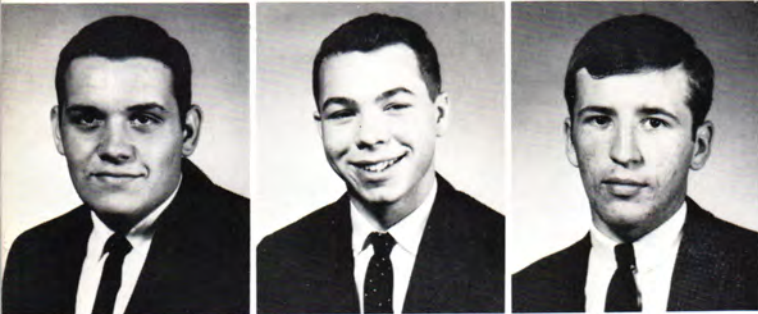


Sharon Lair
Business
 Pryor
 Richard Lazalier
Chemistry
 Collinsville
 Kay Lents
Arts and Science
 Oklahoma City





Judy Lester
General
 Miami
 Donna Lewis
Art
 Tulsa
 Harold Linihan
IBM Computer
 Tulsa

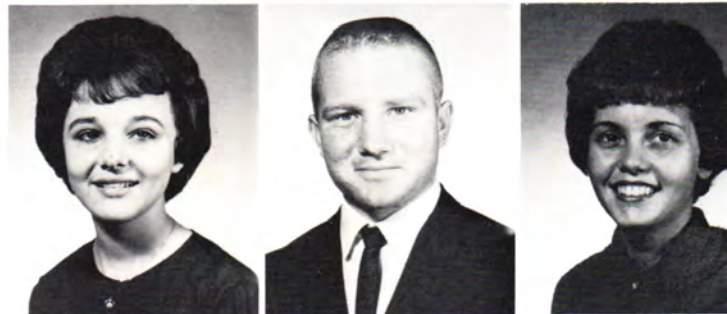


Larry Linn
Industry
 Miami
 Leonard List
Elementary Education
 Tulsa
 Patrick Lloyd
Business
 Skiatook

Glenda Locust
Accounting
 Owasso
 Byrkie Love
General
 Fairland
 Joe Lucas
Pre-Law
 Copan



Linda Lynch
Home Economics
 McCune, Kansas
 Bill McClure
Industrial Education
 Collinsville
 Sandra McConnell
Business
 Wyandotte



Clifford McCord
Business
 Chetopa, Kansas
 Linda McCoy
Business
 Commerce
 Eddie McCullough
Engineering
 Sperry



Gary McDaniels
Business
 Tulsa
 Sharon McKay
Pre-Nursing
 Alluwe
 Steve McKenzie
Business
 Tulsa

Charles McKibben
Chemistry
 Seneca, Missouri
 Bob McMillin
Business
 Vinita
 Sharon McRoberts
Elementary Education
 Kansas



Joyce Madden
Home Economics
 Pryor
 Charlene Mael
Pre-Nursing
 Fairland
 James Magness
Psychology
 Fairland



Jean Magness
Business
 Fairland
 Danette Mailath
Education
 Commerce
 Thomas Malocsay
Industrial Education
 Miami



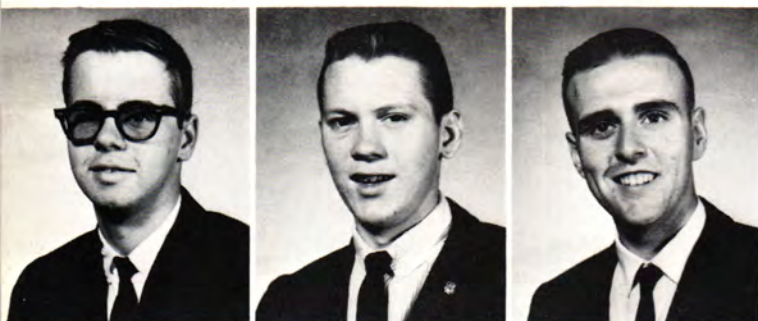
Bill Mandlebaum
Entomology
 Bartlesville
 Billye Maples
Business
 Miami
 Cordelia Marcum
Home Economics
 Oklahoma City

Alice Martin
Drama
 Tulsa
 Carla Martin
Elementary Education
 Tulsa
 Rita Maxson
General
 Miami



John Mayer
Business
 Miami
 Tom Mayfield
Business
 Vinita
 David Mead
Biology
 Tulsa





John Mericle
Industrial Education
 Miami
 Charles Merriott
Arts and Science
 Chelsea
 Gary Midkiff
Pre-Eng
 Miami



Eve Meisner
Home Economics
 Broken Arrow
 Edgar Miller
Agriculture
 Sperry
 Fred Miller
Pre-Med
 Afton

Odell Miller
General
 Fairland
 Lillian Milton
General
 Tulsa
 Theresa Mitchell
Business
 Miami



Samad Moayed
Engineering
 Tehran, Iran
 Ann Lynn Mocha
English
 Muskogee
 Mohammad Mokfi
Engineering
 Tehran, Iran



Mary Montgomery
IBM Computer
 Picher
 Tom Moody
Arts and Science
 Miami, Florida
 Trena Moore
Elementary Education
 Picher



Chuck Murdock
Business
 Tulsa
 Bob Myers
Business
 Grove
 Shirley Myers
Business
 Miami

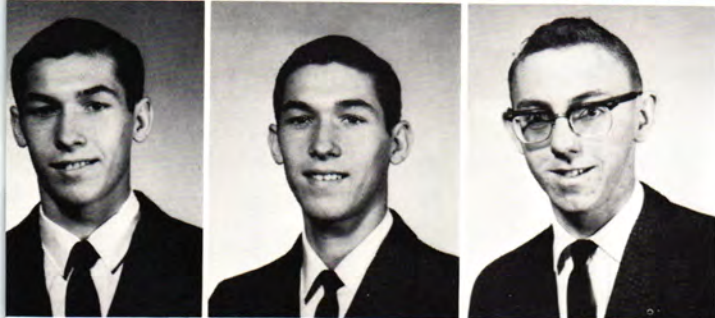
Ronald Nayfa
Business
 Tulsa
 Steve Neill
Business
 Welch
 Loyd Niceley
Business
 Vinita



Steve Northcutt
Animal Husbandry
 Wahita
 Linda Ogle
Home Economics
 Tulsa
 Deanna Oliver
Elementary Education
 Miami



Curtiss Olvey
Hotel and Restaurant Management
 Afton
 Alan Ortloff
Mathematics
 Tulsa
 Kenny Pack
Business
 Miami



Eddie Palmer
Business
 Adair
 Freddie Palmer
Business
 Adair
 Ronnie Panter
Business
 Fairfax

William Parinton
IBM Computer
 Blackwell
 Jim Patrick
Animal Husbandry
 Skiatook
 Larry Patterson
Secondary Education
 Tulsa



Tom Patterson
Business
 Pryor
 Dave Paulding
Business
 Tulsa
 Mike Payton
Music
 Miami





Pat Peacock
Business
 Wyandotte
 Linda Peddicord
Arts and Science
 Oklahoma City
 Marie Pees
Mathematics
 Miami

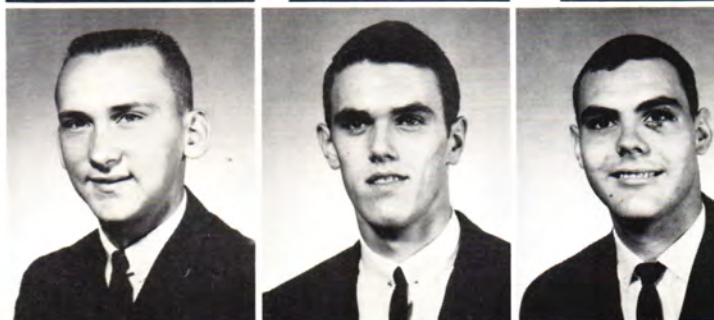


Judy Pendergraft
Business
 Jay
 Kenneth Pendley
Industrial Education
 Miami
 Paul Pennington
General
 Tulsa

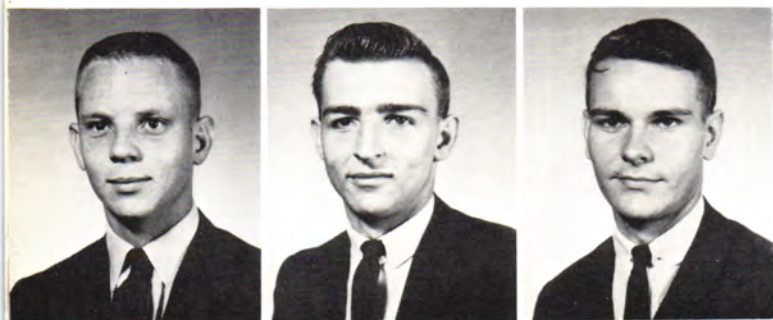
Jane Peper
Business
 Adair
 Joe Perkins
History
 Vinita
 Karen Perkins
Art
 Kansas City, Missouri



Luther Peters
Animal Husbandry
 Chetopa, Kansas
 Jim Pfeiffer
Business
 Tulsa
 Frank Phillips
Industrial Education
 Miami



James Phillips
Journalism
 Welch
 Tommy Phipps
Engineering
 Sand Springs
 Orville Pierce
General
 Miami



James Pierson
Business
 Pryor
 Duane Pitts
Business Administration
 Vinita
 Bobby Pond
Industrial Education
 Vinita



W. R. Pope
Agriculture
 Vinita
 Mike Pounds
Business
 Tulsa
 Rex Prather
Agriculture
 Vinita



Nancy Price
Elementary Education
 Welch
 Roger Probst
Arts and Science
 Protection, Kansas
 Joyce Prochaska
Business
 Grove



Dale Proctor
Music
 Grove
 Ray Purdy
Animal Husbandry
 Blackwell
 Jim Putnam
Pre-Med
 Tulsa



David Queen
Music
 Tulsa
 Khosrow Rahbar
Electrical Engineering
 Abadan, Iran
 Jim Rainwater
Engineering
 Tulsa

Susan Ramsey
Business
 Bixby
 Pat Randolph
History
 Westville
 Marshall Rathbun
IBM Computer
 Enid



Ed Redding
Chemistry
 Sapulpa
 Louis Redon
General
 West Indies
 Tom Reece
Arts
 Fairland





Charles Reed
English
 Pea Ridge, Arkansas
 James Reed
Engineering
 Chetopa
 Robert Renfro
Engineering
 Tulsa



Ali Reshad
Engineering
 Tehran, Iran
 Behjat Reshad
General
 Tehran, Iran
 Bill Reynolds
Pharmacy
 Miami

Eddie Reynolds
Accounting
 Miami
 Gerald Reynolds
Industrial Education
 Miami
 Colleen Rhodes
Elementary Education
 Wyandotte



Doyle Rice
Engineering
 Chouteau
 Robert Rich
Agriculture
 Tulsa
 Dennis Richardson
Business
 Vinita



Phyllis Ridenour
Business
 Seneca, Missouri
 Verda Riehart
Music
 Tulsa
 Tom Riley
Agriculture
 Wahita



Malcolm Roberts
Pre-Engineering
 Mounds
 Linda Robertson
Medical Technician
 Miami
 Richard Rogers
Engineering
 Miami



Roger Rollins
Business
 Miami
 Ronald Rosiere
Pre-Vet
 Miami
 Sue Rothrock
Physical Education
 Broken Arrow



Jack Rouk
Business
 Pryor
 Janie Rowe
Education
 Tulsa
 Jim Rowe
Business
 Ramona



George Sabol
Engineering
 St. Louis, Missouri
 Frank Sagel
Arts and Science
 Adair
 Henry Salisbury
General
 Nowata



Gene Salyer
Business
 Tulsa
 Charles Schaller
Engineering
 Pryor
 Sam Schluchter
Engineering
 Oklahoma City

Bob Scott
Business
 Stilwell
 Paula Seacat
Business
 Commerce
 George Seals
Animal Husbandry
 Coffeyville, Kansas



Cynthia Seamster
Foreign Language
 Miami
 Howard Searl
Pre-Dental
 Miami
 Gordon Selby
Business Administration
 Tulsa





Marilyn Shackelford
Arts and Science
 Tulsa
 John Shafer
Music
 Miami
 Glenn Shaffer
Engineering
 Bartlesville



Linda Shaw
Arts and Science
 Commerce
 Larry Shiplet
General
 Tulsa
 Selinda Shipley
Education
 Miami

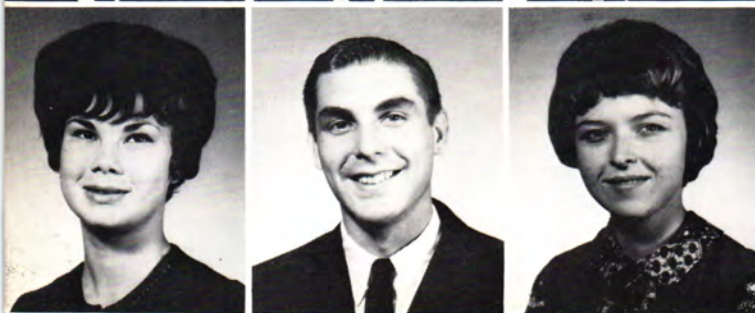
Robert Shotts
IBM Computer
 Lawton
 Don Silver
Animal Husbandry
 Belton, Missouri
 Virgil Sloan
Business
 Miami



Andy Smith
General
 Quapaw
 Betty Jean Smith
Art
 Tulsa
 Gary Smith
Pre-Law
 Tulsa



Ivan Smith
Arts and Science
 Copan
 Jerry Smith
IBM Computer
 Miami
 Lee Smith
Industrial Education
 Tulsa



Meredith Smith
Biology
 Miami
 Preston Smith
Business
 Miami
 Sharon Smith
Business Education
 Bartlesville

Terry Smith
Agriculture
Picher
Vicki Smith
Business
Coweta
Tom Smysor
Pre-Dental
Bartlesville



Robert Snowden
IBM Computer
McAlester
Frank Southwood
Business
Tulsa
Ted Spangler
Forrestry
Bartlesville



Bob Spencer
Liberal
Miami
Donna Spielman
Arts & Science
Oklahoma City
Phil Spyres
Business
Tulsa



Sharon Stamback
General
Miami
Don Stephens
Arts & Science
Bixby
Marvin Stephens
Agriculture Education
Miami

Jerry Stierwalt
Electronics
Chelsea
Richard Stile
Arts & Science
Vinita
Bill Stokely
Arts & Science
Tulsa



Jason Stone
Engineering
Locus Grove
Jim Stone
Arts & Science
Tulsa
Phillip Stone
Engineering
Tulsa





Ronnie Stowell
Music
 Miami
 Jack Sues
Business
 Tulsa
 Wanda Surine
Music
 Adair



Rae Nelda Sutton
Elementary Education
 Miami
 Robyn Swanson
Arts & Science
 Miami
 Mary Swenson
Business
 Ponco City

Barbara Swinehart
Arts & Science
 Picher
 Larry Taiclet
Business
 Miami
 Jo Ann Tallman
Home Economics
 Welch



Lloyd Taylor
Accounting
 Vinita
 Jeanne Terrill
Business
 Collinsville
 Jane Testerman
Business
 Picher



Cindy Tharp
Liberal Science
 Abilene, Texas
 Don Thomas
Arts & Science
 Owasso
 Judy Thompson
English
 Foyil



Pat Thompson
Business
 Lexington
 Ben Thornton
Speech
 Miami
 Larry Tilley
Business
 Tulsa



John Towry
Industrial
 Miami
 Judy Torxell
Home Economics
 Collinsville
 Janet Turley
Elementary Education
 Miami



Ed Turlington
Business
 Sebastian, Florida
 Donna Turner
Business
 Miami
 Janie Turner
Business
 Commerce



Lee Turner
Business
 Commerce
 Steve Turnbo
Arts & Science
 Tulsa
 Robert Tuttle
Chemical Engineering
 West Des Moines



Allahverdi Vahedian
Agricultural Engineering
 Iran
 Ronnie Vanatta
Arts & Science
 Miami
 George Veirs
Pre-Med
 Miami

Annese Verdon
Elementary Education
 Vinita
 Ronnie Vernon
Commercial Art
 Vinita
 Sam Viles
Arts & Science
 Miami



Wilma Von Schrittz
Elementary Education
 Big Cabin
 Rick Wagner
Forestry
 Bixby
 Sharie Walker
Physical Education
 Miami





Clifford Walls
English
 Miami
 John Walters
Agriculture
 Skiatook
 David Ward
Business
 Ramona



Milton Wardeh
Engineering
 Iran
 Lucinda Wasson
English
 Miami
 Linda Watkins
Business
 Dewey

Mike Watkins
Sociology Science
 Pahokee, Florida
 Jim Watters
Arts & Science
 Miami
 Gary Watts
Animal Husbandry
 Seneca, Missouri



Walter Weatherford
Engineering
 Sanduskey, Ohio
 Mike Weaver
Business
 Miami
 Harold Webster
Business
 Muskogee



Harvey Welch
Social Studies
 Aurora, Missouri
 Edward Well
Pre-Law
 Kansas City, Missouri
 Dan Westhafer
Agriculture
 Skiatook



Phyllis White
Business
 Miami
 Ricky Whitehead
Pre-Vet
 Miami
 Ted Whitehead
Arts & Science
 Tulsa

Aloma Whitfield
Business
 Jay
 Gary Whitmire
Engineering
 Westville
 Charles Whittington
Business
 Dewey



John Wile
Business
 Dewey
 Gary Williams
Business
 Afton
 Joyce Williams
Business
 Grove



Perry Williams
Physics
 Fairland
 William Willis
Animal Husbandry
 Shidler
 David Wilmoth
Industrial Education
 Commerce



Darrell Wilson
Engineering
 Miami
 Elaine Wilson
English
 Fairland
 Joyce Wilson
General
 Miami



Linda Wilson
Elementary Education
 Nowata
 Steve Wilson
Arts & Science
 Grove
 Jim Winn
Business Administration
 Bartlesville



Alfred Wise
Biology
 Weleetka
 Frank Womack
Industrial Education
 Miami
 Jim Wood
Arts & Science
 Sapulpa



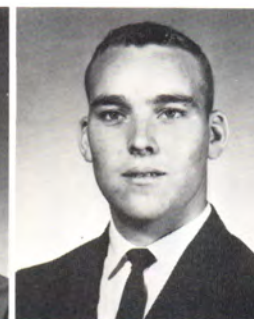


Verla Wood
Lab Technician
 Miami
 Larry Worley
Business Administration
 Owasso
 Jackie Worsham
Business
 Stilwell



Jan White
Business
 Tulsa
 Martha Wright
Music
 Miami
 Sue Wright
Business
 Tulsa

Nova Wyatt
Elementary Education
 Miami
 Sam Wynn
Industrial Education
 Welch
 Fred York
History
 Vinita



Jo Ann York
Business
 Vinita
 Marvin Younger
Industrial Education
 Miami
 Jackie Yust
Business
 Miami



Pete Dimick
Business
 Covington, Virginia
 Jimmy Johnson
Agriculture Economics
 Skiatook
 Robert Kehoe
Forestry
 Tulsa



Bill King
History
 Tulsa
 Roger Varvel
Medical Technician
 Bartlesville

ROYALTY





MISS DIANA OLIVER
Homecoming Queen
Engineers Club
Miami



HOMECOMING ATTENDANTS



Miss Nancy Kelly
AFROTC
Afton

Miss Kendall Harrell
Aggie Club
Chelsea



Miss Phyllis Hendricks
Freshman Class
Nowata





Miss Gloria Brown
Pre-Med Club
Miami



Miss Jane Testerman
Business Club
Picher



Miss Glenda Quinton
French Club
Locust Grove



Miss Dixie McKinzie
Phi Theta Kappa
McCune, Kansas



Miss Bertha Lorenz
Sophomore Class
Tulsa



Miss Jeanne Burger
Masquers
Tulsa



Miss Kayee Johnston
Industrial Technology Club
Tulsa



Miss Nancy Schooley
Press Club
Quapaw



MISS DONNA TURNEY
Football Queen
Sand Springs



MISS SHARON COOK
Basketball Queen
Drumright



MISS JUDY WASHINGTON
Baseball Queen
Claremore



MISS DIXIE McKINZIE
Track Queen
McCune, Kansas



MISS SANDRA GOFF
Viking Queen
Bixby

VIKING QUEEN ATTENDANT



Miss Sue Wright
Tulsa

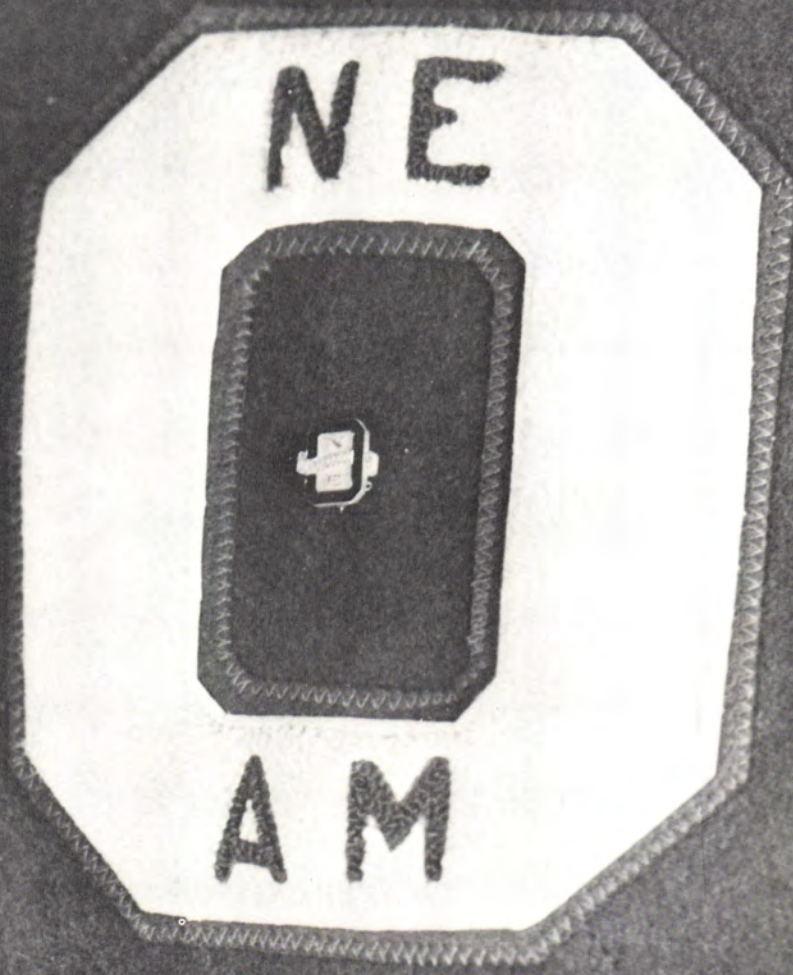


Miss Connie Smith
Tulsa

Miss Linda Peddicord
Oklahoma City



SPORTS





1963 GOLDEN NORSEMEN FOOTBALL TEAM – First row, from the left: Toby Bengston; Phil Howard; Richard Haynes; Flo (Speedy) Gonzales; Gary Lunnon; Britt Williams; Howard Glen. Second row: Carroll Bolinger; Forrest Towry; Richard Ball; Raymond Worrell; Gene Dillman; Kenny Dean Kenneth Conduff; George Kevern. Third row: Warren Sinclair; Pete Moseley; Rod Rodriquez; Pete Dimick; Don Hanst; Ed Turlington; Jim Little; Ronald Coker; Bobby McCullough. Fourth Row: Mike Horne;

Leon Baker; John Cobb; Steve Snider; Taymond Green; Jack Henning; Tom Moody; Larry Kissee; Bill Appl. Fifth row: Bill Frisbie; Gary Duffield; Darryl Edenfield; Mike Watkins; Bob Abernathy; Richard Enyart; Stan Denham; Charles Bohngen; Mike McElreath. Sixth Row: John Klotz; Tom Close; Jack Sues. Not pictured: Andy Sixkiller; Herb Robinson; Emory Harrison Jr.; Johnny Watson.



COACHES – kneeling, from the left: Max Buzzard and Dewey Lynch. Standing: Jack Wallace; S. A. (Red) Robertson; Jim Kissee.



Flo (Speedy) Gonzales
Junior College All-American



Richard Haynes
Junior College All-American

1963 FOOTBALL SCHEDULE

| | | | |
|--------------|----|------------------|----|
| Northeastern | 28 | Texarkana | 12 |
| Northeastern | 38 | Tyler | 15 |
| Northeastern | 20 | Trinidad | 6 |
| Northeastern | 75 | Fort Scott | 20 |
| Northeastern | 12 | Grand Rapids | 0 |
| Northeastern | 26 | Henderson County | 0 |
| Northeastern | 47 | Wichita Frosh | 7 |
| Northeastern | 14 | Cameron | 12 |
| Northeastern | 39 | Coffeyville | 0 |
| Northeastern | 0 | Orange Coast | 21 |

"You can't catch me. I'm the gingerbread man," says Speedy Gonzales as he makes a good gain against the Cameron Aggies.





"Please don't take your ball and go home. You can kick off next time." This reflects the attitude of the Henderson County squad as flashy George Kevern returns the ball to help the Norsemen to a 26-0 victory.

Emory Harrison



George Kevern



Pete Dimick



Howard Glen



Richard Enyart

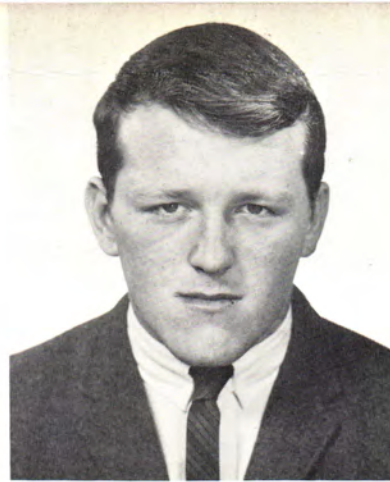




Jim Little



William Frisbie



Rod Rodriguez



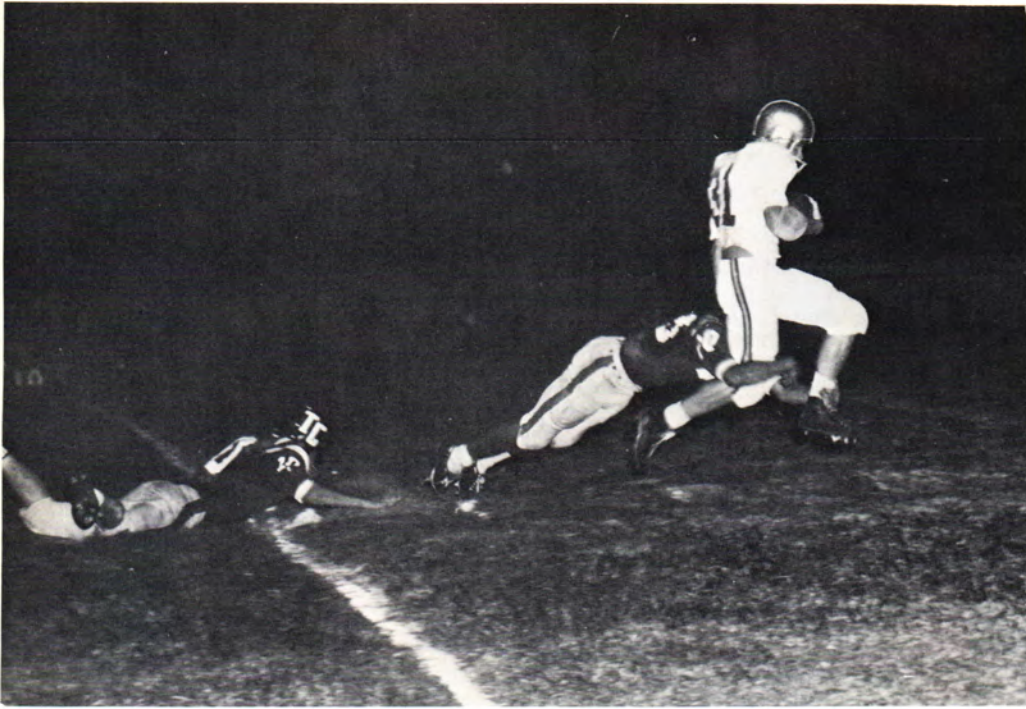
Kenneth Conduff



Mike Wadkins

Mike Horne sprints for a long gain in the 75-20 victory over the Fort Scott Greyhounds.



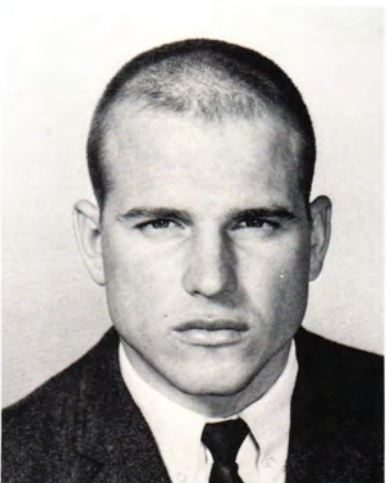


You just can't get a good man down,
at least not when he's a Norseman.

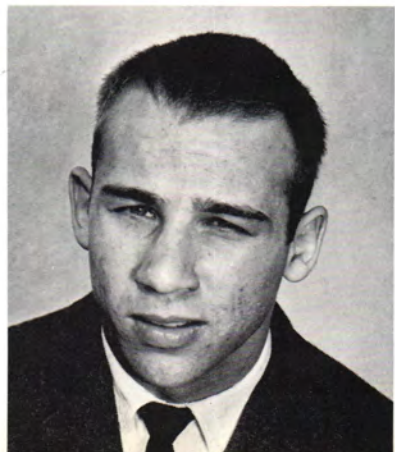
Ed Turlington



Mike Horne



Mike McElreath



Ronnie Coker



Gene Dillman





Charles Bolinger



Jack Henning



Forrest Towry



Carroll Bolinger



Jim Finnell

"No! It's our ball and I'm going to get it." And he did for another victory for the Norsemen.





"OK, who has the ball?"

Kenny Dean



Johnny Watson



Richard Ball



Ray Warrell



Warren Sinclair





Britt Williams



Bill Appl



Larry Kisse



Bob McCullough



Gary Lunnon

"We fly through the air with the greatest of ease."





"A friendly game of leap frog."

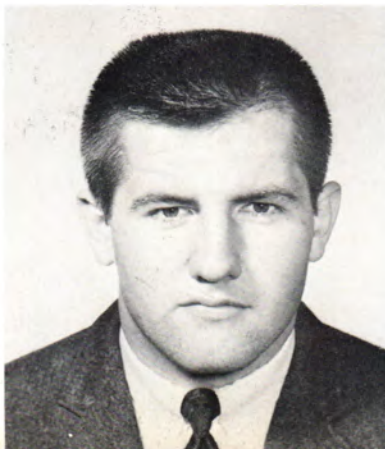
Raymond Green



Phil Howard



Stan Denham



Toby Bengston



Pete Moseley

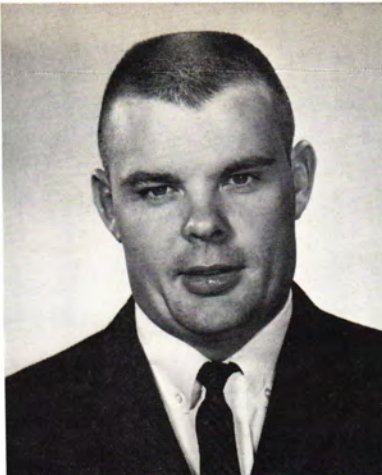




Andy Sixkiller



Steve Snider



Herb Robinson



Tom Close



John Cobb

Red Rover, Red Rover, let the
Norsemen come over; and they did,
for another victory.





"When I say get down I mean get down!"

Tom Moody



Don Hanst



Darryl Edenfield



Gary Duffield



Leon Baker





"Daddy, take me for a piggy back ride."

F
O
O
T
B
A
L
L

F
O
L
L
I
E
S



"Please Mr. Robertson, may I be excused?"



An original version of the twist

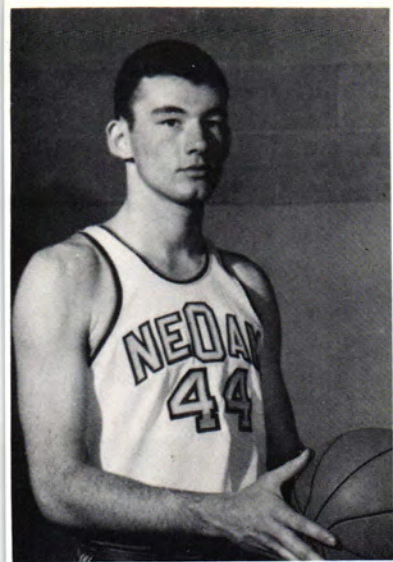


BASKETBALL SQUAD—Back row, from the left: Charles Reed, Bill Clingan, Guy Owens, Gary Duffield, Charles Hamilton, Homer Huckaby, John Sexton. Front row: Jim Haddock, Jack Lewis, Kenny Dean, Phil Spyres, Doug Gregory, Richard Ball, David Ward.

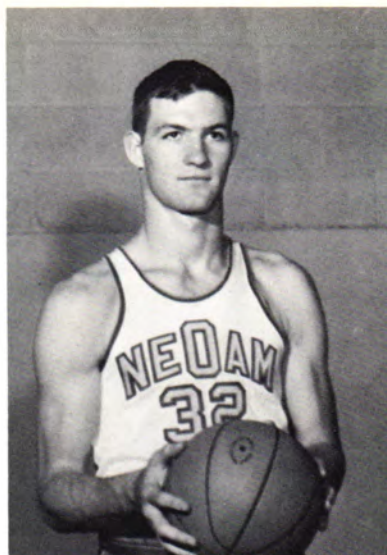
B
A
S
K
E
T
B
A
L
L



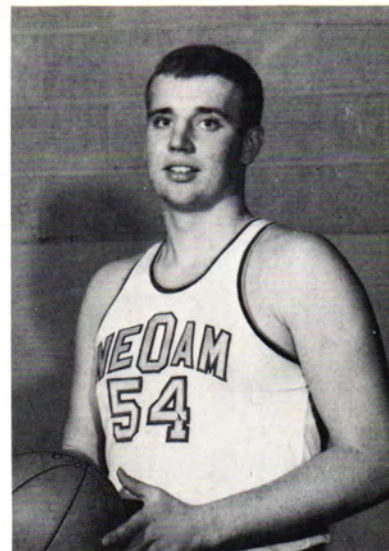
Max Buzzard
Basketball Coach



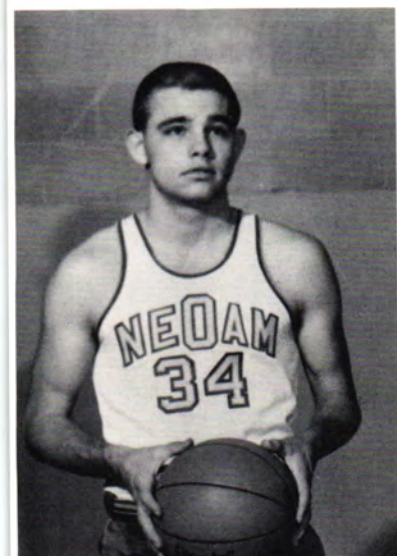
Bill Clingan



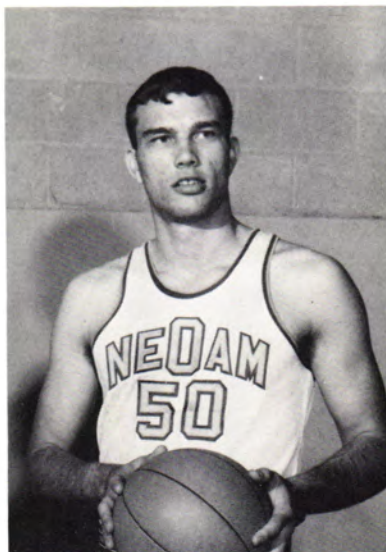
Gary Duffield



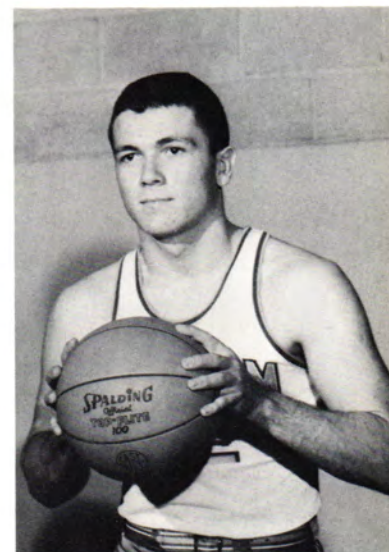
Charles Hamilton



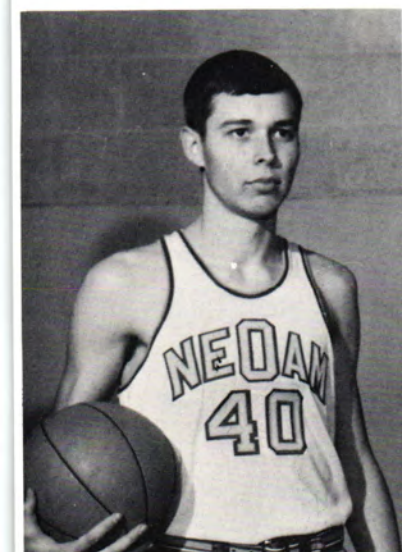
Guy Owens



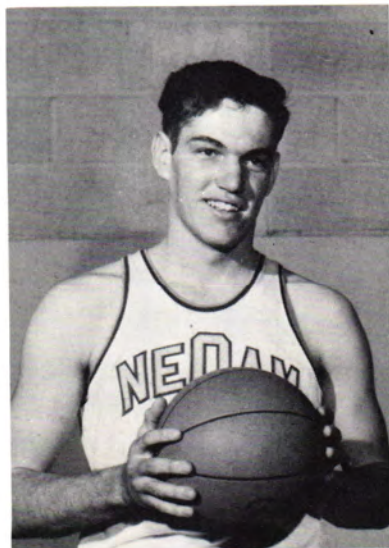
Charles Reed



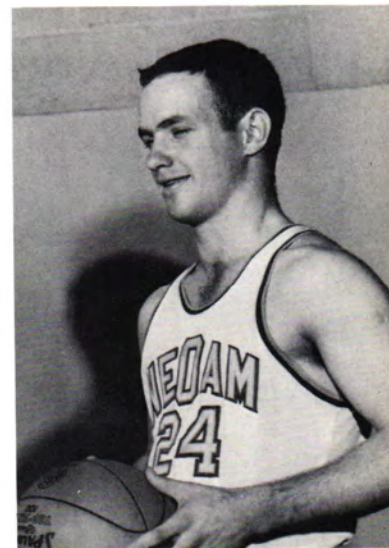
Richard Ball



Phil Spyles



Homer Huckaby



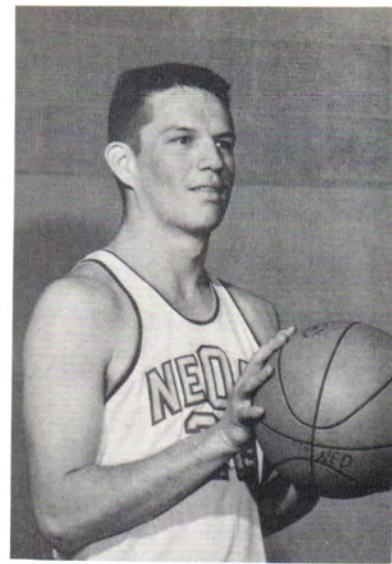
David Ward



Kenneth Dean



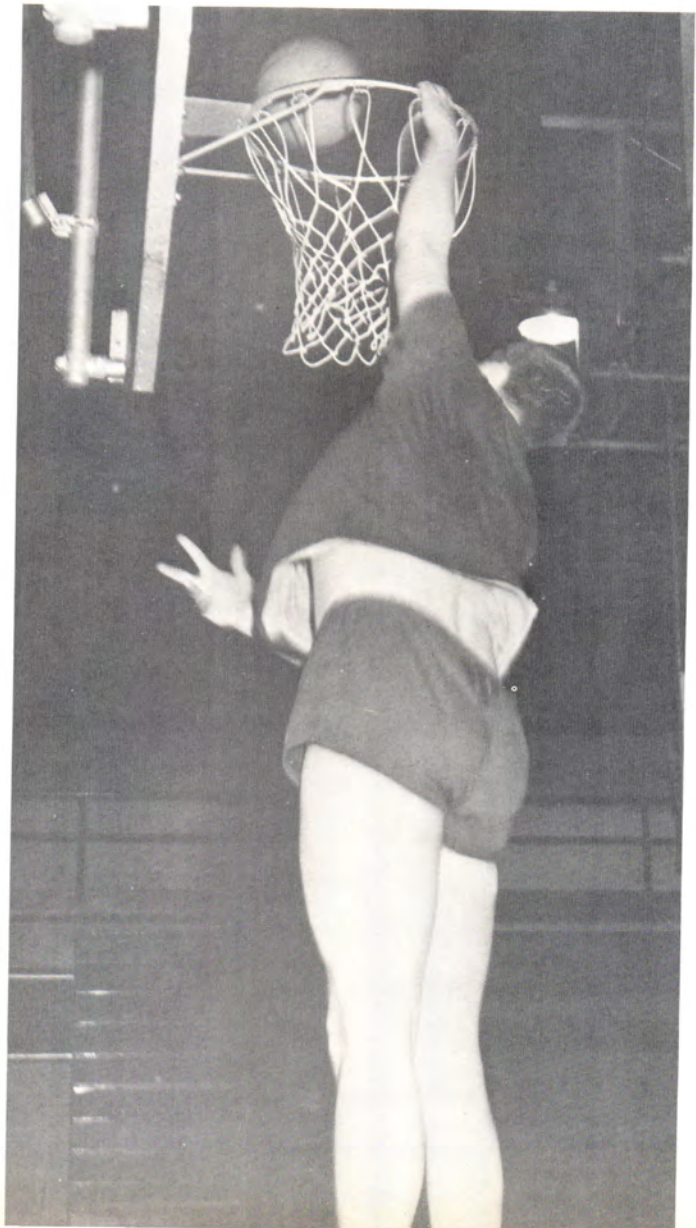
John Sexton



Jack Lewis



Doug Gregory



Chuck Hamilton dunks the ball.



Homa Thomas
Coach



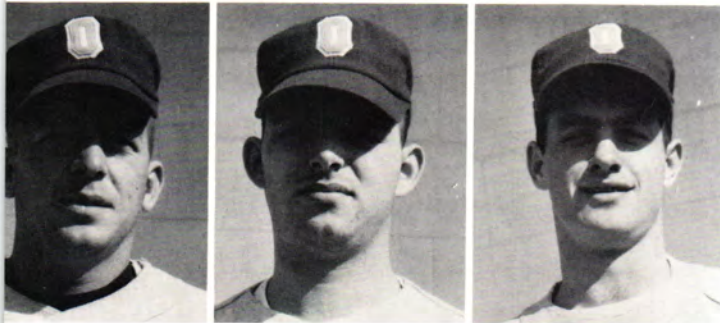
Max Buzzard
Assistant Coach

B
A
S
E
B
A
L
L

Don Thomas

Danny Haynes

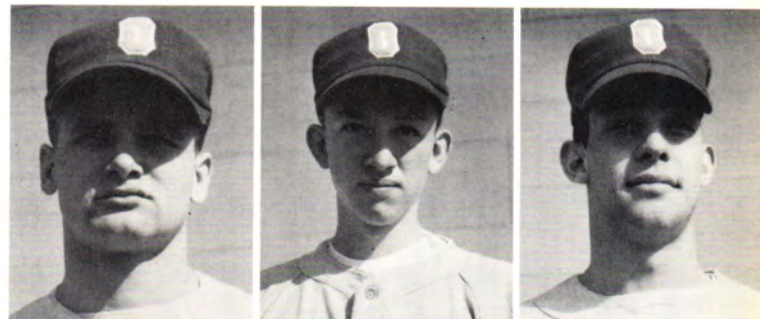
David Ward



George Kevern

Steve Turnbo

Charles Branca



Kenneth Dean

Larry Shiplet

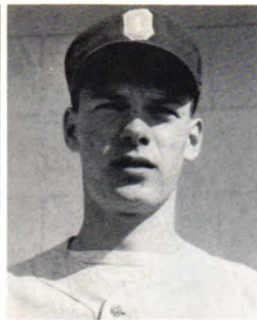
Sam Schluchter



Homer Canada

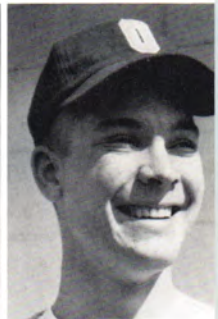
Roy Blizzard

Ronnie Wooldridge



Doug Gregory

Raymond Dillman



Bob Mendell



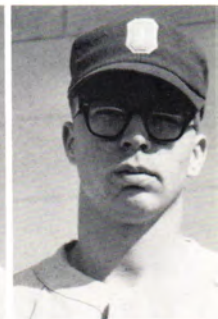
Flo Gonzales



Sam Hendrix

Mike McElreath

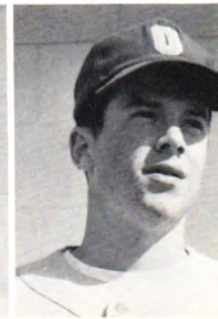
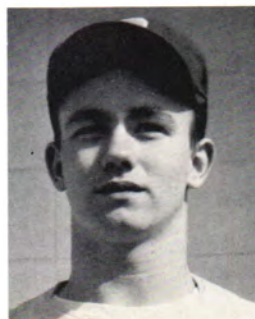
John Klotz



John Suess

John Hildebrand

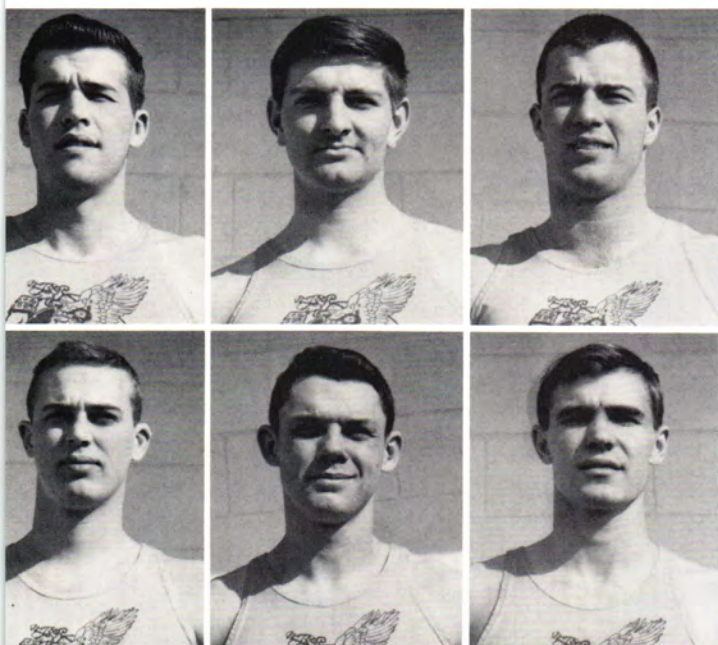
Larry Patterson





Jack Rucker
Coach

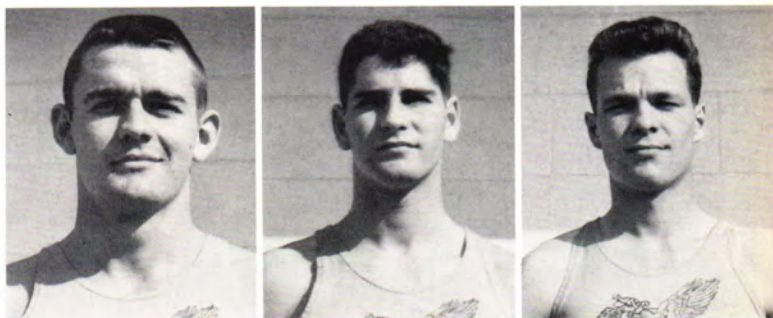
TRACK



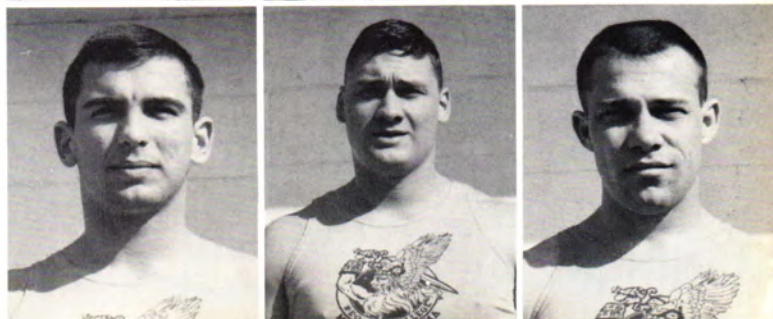
Randy Scott
John Carter
Gary Lunnon

Eddie Pierce
Brad Smallwood
Marvin Gray

Ed Turlington
John Harrison
Gary Watts



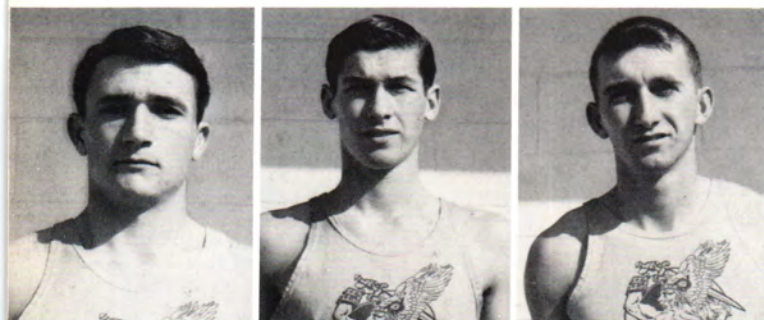
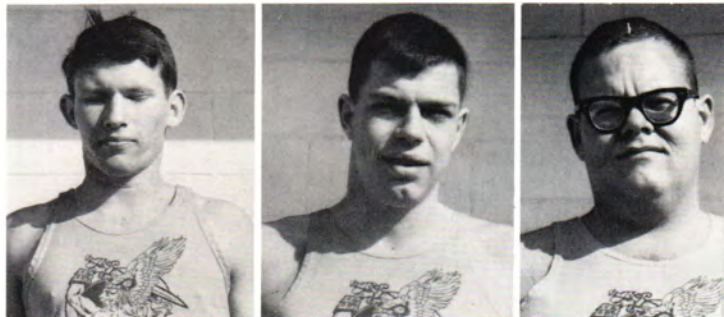
Tom Moody
George Botts
John Hanoch



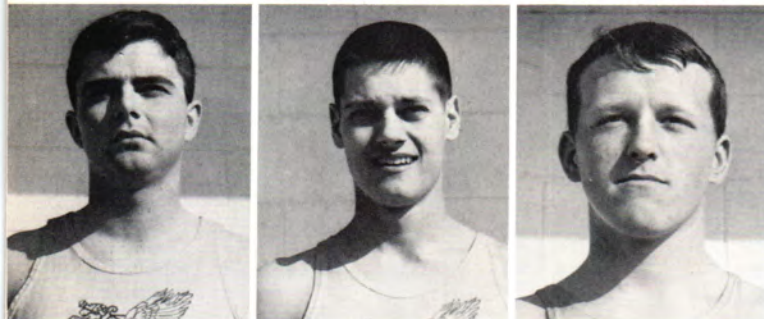
Bill Stokely
Jim Dowell
George Gibbs



Charles Gladden
Mike Milward
Bill Frisbie

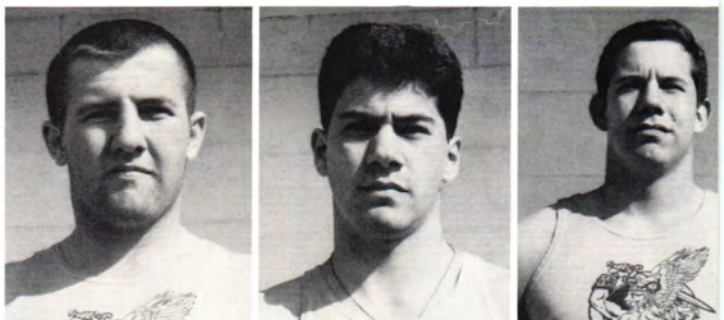


Richard McDaniel
Eddie Palmer
Frank Teel



Don Anderson
Jody Mayer
Rod Rodriguez

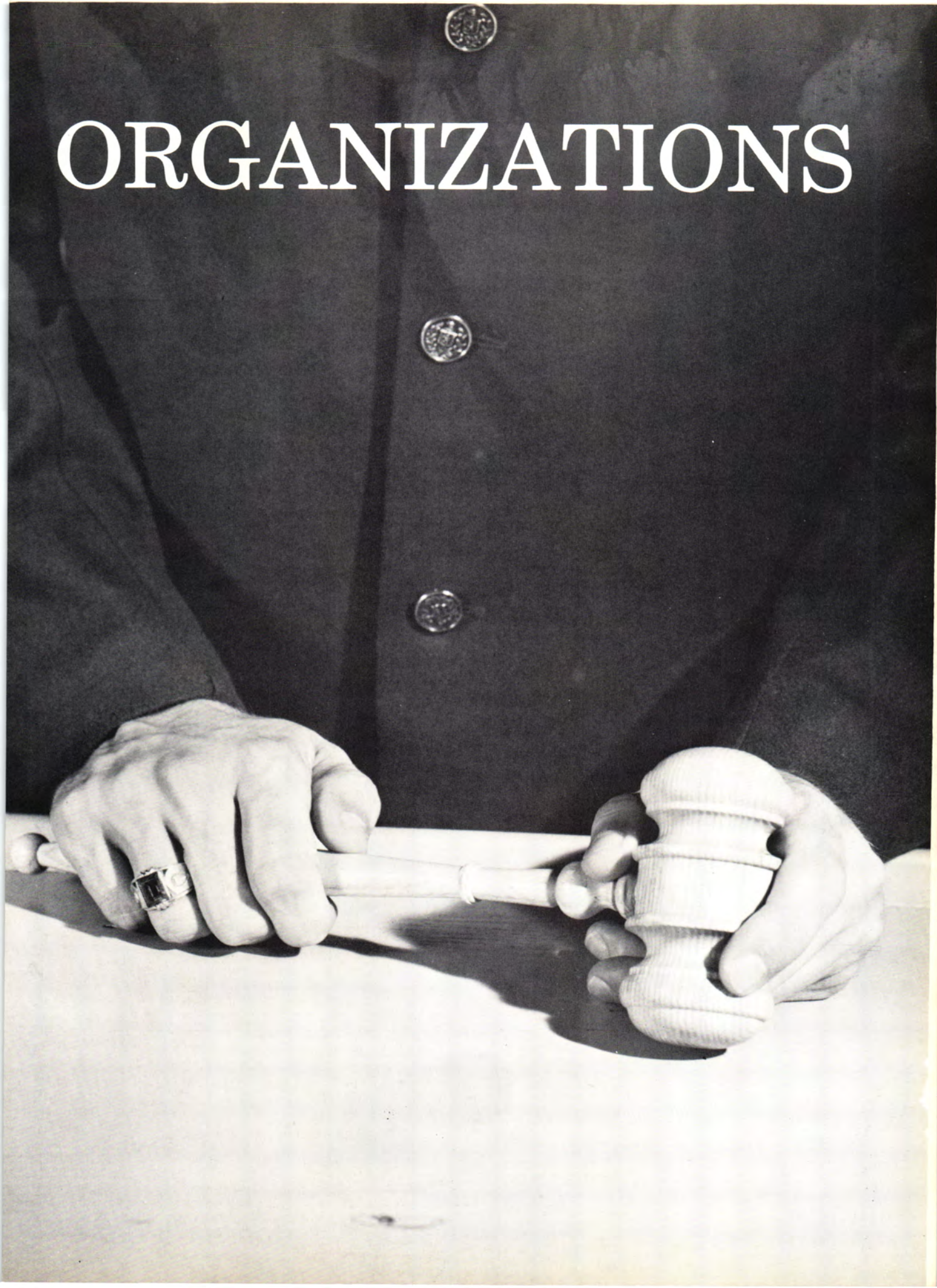
Stan Denham
George Lipari
Rick Romans



Robert Ankersheil
Charlie Cole
Carroll Bolinger



ORGANIZATIONS





Back row, from the left: Jeanne Burger; Dr. Carter; Skip Holloway; Jerry Southerland; Clyde Faulkner; Ken Powell; Lloyd Buffalo; Don Anderson; Charles Foster; Marion Mitchell; Terry Hedeman; Larry Tilley; Jim Woodworth; Leroy Johnson; Leon Jones; Ali Habashi; Aied Diane; Bill Layton; Dean Angle. Mid-

dle row: Linda Madden; Danette Mailath; Dixie McKinzie; Linda Peddicord; Donna Turney; Edna Ramsey; Beverly Cannon; Linda Wallace; Gail Little; Sharon Lair; Sharon Nelson. Front row: Bertha Lorenz; Carol Harmon; Diane McCune; Sandra Wojahn; Ann Atchley.

STUDENT COUNCIL



Officers, from the left: Sharon Nelson, Treasurer; Gail Little, Secretary; Terry Hedeman, Vice-president; Skip Holloway, President.

OFFICERS, Seated from the left: Sharon Nelson, head cheerleader; Diana Oliver, secretary; Sandra Wojahn, representative-at-large. Standing: Charles Burwell, representative-at-large; Clyde Faulkner, president; Terry Hedeman, vice-president.



STUDENT COUNCIL



Front row, from the left: Linda Wallace, Diane McCune, Sharon Nelson, Dixie McKinzie, Louise Schoonover, and Linda Holt. Middle row: Diana Oliver, Bertha Lorenz, Sandra Wojahn, Linda Madden, Carol Harmon, Theresa Mitchell, and Ann Atchley. Standing: Jerry Sutherland,

Clarence Ruby, Barry Heyl, Terry Hedeman, Charles Foster, John Carter, Clyde Faulkner, Sam Moayed, Marion Mitchell, Jim Watters, Charles Burwell, Lloyd Buffalo, Don Anderson, and Ken Powell.



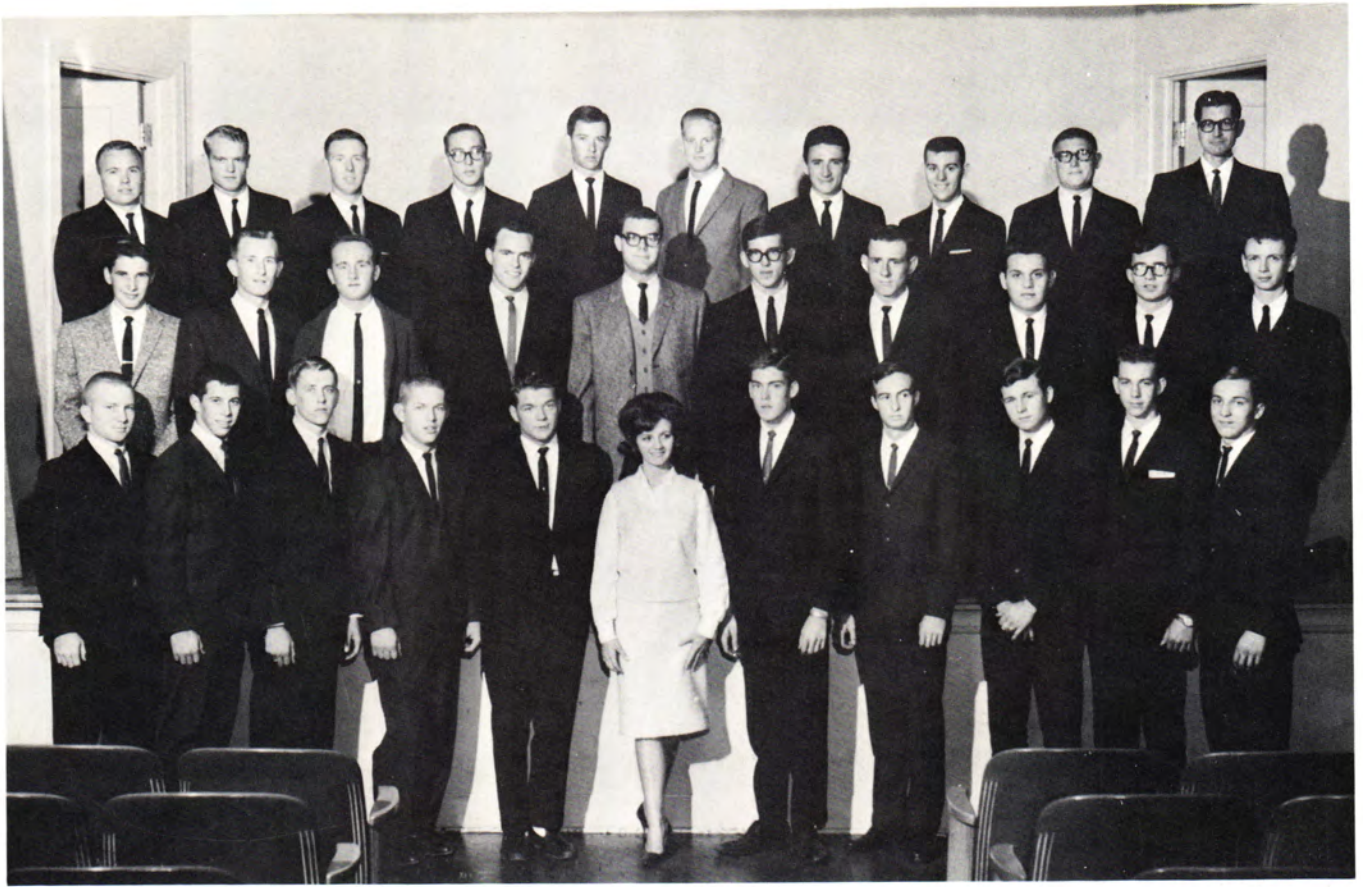
Front row, from the left: Mr. McQuigg, Tom Arnold, Craig Nickols, Bill McClure, Fred Coble, George Hazlett, Kaye Johnston, Terry Arning, Jimmy Brown, David Riggs, Jerry Stierwalt, Gerald Reynolds, Mr. Kordis. Second row: Jerry Berry, Karl Brooks, Lloyd Buffalo, Frankie Ash, John Towery, Larry Gillespie, Richard McDaniel, John Mericle, Edmond Johnson, Dean Kinion, Lee Smith. Third row: John

Bradshear, Mike Fritzs, Richard Findley, Kenneth Wolfkill, William Parks, Frank Phillips, Russell Brummett, Gerald Hicks, Ken Bond, Charles Herndon, Paul Bryant. Back row: Larry Linn, Jerry Farrar, Darrell King, Curtis Collins, David Wilmoth, Frank Womack, Jim Farris, Steve Durall, Jim Denney, Gary Brooks.

ITS



OFFICERS, From the left: Skip Brooks, Reporter; John Greaves, Vice-President; Bill Greaves, Secretary; Lloyd Buffalo, Student Council Representative; Curtis Collins, President.



Front row, from the left: Bill McClure, Craig Nichols, Gary Reynolds, Terry Arning, George Hazlett, Kaye Johnston, Sonny Johnson, Jimmy Brown, David Riggs, Gary Brooks, and Tom Arnold. Second row: Jerry Berry, Mike Fritz, John Towry, Richard Findley, Frank Phillips, Russell

Brummett, Darrell King, Larry Linn, Tim Farris, and Paul Bryant. Back row: Eldon Divine, sponsor; Jerry Farrar, David Wilmoth, Dean Kinion, Lee Smith, Kenneth Wolfkill, Richard McDaniels, Frankie Ash, John Bradsher, and J. D. Wilhoit, sponsor.

AIDD



OFFICERS, from the left: Raymond Worrell, George Hazlett, Frank Phillips, and Jerry Berry.

BUSINESS



OFFICERS, Back row, from left: Andy Sixkiller, Mike Smith, Carroll Bollinger. Front row: Linda Madden, Janeth Kerpan.



Back row, from left: Carroll Bolinger, Andy Sixkiller, Phil Howard, Steve Snider, Horance Chestnut, Gerald Gay, John Schumacher, Bob Snowden, Robert Shotts. Third row: Kay Martin, Janet Ropp, Judy Litle, Peggy Meyers, Donna Turney, Sharon Cook, Carol Armstrong, Donna Turner.

Second row: Linda Madden, Janeth Kerpan, Carol Harmon, Madolyn Dobbs, Diane Edwards, Linda Harrison, Jane Peper, Mary Korthase, Paula Seecat. Front row: Theresa Mitchell, Billie Hicks, Janie Testerman, Ouida Furnas, Judy Pendergraft, Mary Cozart.



ENGINEERS

OFFICERS, from left: Kenny Sudar, Linda Brown, Charles Foster, Ann Atchley, Don Sanders.



Back row, from left: Oren E. Need, John Thiesing. Sixth row: George Sabol, Dane Dixon, Clarence Ruby, Leonard Skeehan. Fifth row: Marvin Tunnell, Jerry Custer, Charles Chaney, Robert van Winkle, John Snell. Fourth row: Larry Wells, Kenneth Conduff, Tommy Phipps, Bob Jones,

Mohammed Ehsani. Third row: Milton Wardeh, Marie Pees, Diana Oliver, Charles Foster. Second row: Gene Pewitt, Kenny Sudar, Youness Ahmadian, Ali Habashi, Ali Reshad. Front row: Ann Atchley, Linda Brown, Don Sanders.

P
R
E

M
E
D



OFFICERS, from the left: Bill Wilson, president; Sharon Cook, secretary; Judy Irby, treasurer; Gloria Brown, student council representative.



First row, from the right: Janie Rowe; Bill Frisbie; Jim Hufford; Barbara Duncan; Colleen Rhodes; Marvin Gray; Howard Searl; Betty Crafton. Second row: Judy Thompson; Mike Milward; David Mead; Carol Hilliard; Judy Irby; Collis Geren; Richard Stiles; Bonnie Harrington. Third row: Beverly Ross; Doris Robinson; Jane McKay;

James Brewer; Rick Romans; Joe Lucas. Fourth row: Linda Jones; Mrs. Myra Lamb, sponsor; Rufus Maynard; John Price; Billy Hendrickson; Gloria Brown. Standing, from the left: Sharie Walker; Sharon Cook; Verla Wood; Bill Wilson.

PHI THETA KAPPA



Front row, from the left: Linda Wallace, Cheryl Martin, Janet Piguët, Sharon Cook, Dixie McKinzie, Diane McCune, Jana Lynn Irwin, Janice Cox, and DeAnn Brewster. Second row: Carol Hilliard, Carol Armstrong, Mary Korthase, June Johnston, Ruth Ann Wolf,

Sharon Nelson, Pat Armstrong, Edna Ramsey, Bertha Lorenz, Linda Potts, and Jeanne Burger. Back row: John Bradsher, Marshall Stoner, John Crowley, Gary Hobson, Terry Hedeman, Larry Coltrane, Marion Mitchell, Calvin Flaharty, and Mike Thrailkill.



Front row, from the left: Mary Swenson, Wanda Surine, Ann Atchley, Linda Barrett, Linda Rotten, Linda Wyrick, Helen Grumbein, Sharon McRoberts, Jo Ann Tallman, Linda Brown, Leanna Swadley, Cynthia Seamster, and Sue Johnston. Second row: Sharie Walker, Sandra Gress, Sharon Bradley, Barbara Burke, Marie Pees, Kendall Harrell, John Klotz, Nancy

Klaus, Carol Bonar, Louise Schoonover, Sandra McConnell, Carolyn Schubert, and Patty Chambers. Back row: John Moorman, Clyde Faulkner, Bob Mendell, Cecil Brock, Dale Sedberry, Larry Wells, William Crafton, Gerald Gay, John Carter, Danny Richardson, Ronald Remke, Joe Smith, Bob Tuttle, Leroy Johnson, and Charles Herndon.



Front row, from the left: Jan Hartman, Terry Genes, Eve Miesner, Barbara Duncan, Linda Watkins, Jane Peper, Selinda Shipley, Theresa Mitchell, Diane Edwards, Ann Harper, Patsy Curry, Linda Lynch, Sharon Stamback, and Chester Palmer. Second row: Larry Arthur, Thelma Burke, Bob Shotts, Linda Burnside, Verla Woods, Linda Robertson, Linda Holt, Sharon

Smith, Phyllis Hendricks, Robyn Swanson, Danette Mailath, Bob Snowden, and Charles McKibben. Back row: Thomas Mustain, Jerry Sutherland, Jerry Smith, Joe LaSarge, Bob Myers, Dane Dixon, David Moorman, Charles Burwell, Ed Dirani, Dwight Faulkner, Jim Hall, Tom Broderick, George Veirs, Gary Garton, and Collis Geren.

CHORUS



First row, from the left: Mr. Richards (director); Betty Crafton; Janet Turley; Robyn Swanson; Mary Ann Hayes; Diane Oliver; Cheryl Martin; Jeanne Burger; Louann Gilliam; Beverly Vincent. Second row: Sarah Tatum, Diane McCune; Carol Holder; Janis Bland; Glenda Quinton; Sandra Wajohn; Tommie Sue Duffield; Kathy Farney; Sharon Hartman; Nancy Crissman; Margie Fields; Judy Cottam. Third row: Martha Wright; Marie Pees; Linda Douglas; Ronnie Stowell;

Jim Hemphill; Dennis Richardson; Charles Campbell; Bob McCullough; Dale Procter; Lester Daniels; Bob Bethel; Joyce Noland; Dorothy Wyr. Fourth row; Ruthie Hamlin; Kendall Harrell; Verda Riehart; Larry Shackelford; Bob Cossairt; John Towry; Jim McLean; Foster Adams; David Queen; John Shaffer; Ed Whistler; Larry Shiptet; Orville Pierce; Don Anderson; Ruth Ann Wolf; Wanda Surine; June Johnson.



GIRLS' ENSEMBLE — from the left: Carol Holder; Kendall Harrell; Ruthie Hamlin; Verda Riehart; Wanda Surine; Diane McCune; Louann Gilliam.



MALE QUARTET — from the left: Mary Ann Hayes (pianist); Charles Campbell; Bob Bethel; Larry Shackelford; Ronnie Stowell.

BAND



Pat Osborn
Drum Major



Sue Rothrock and Connie Smith
Twirlers



Front row, from the left: Pat Osborn, Sue Rothrock, Dr. Robert Swanson, director. Second row: Debra Frogue, Virginia Montgomery, Mary Ann Hayes, Margie Fields, Barry Heyl, Jim Hemphill, Paul Bryant, John Shafer, Nova Wyatt, Jane Terman, Deanna Harrell, and Mary Montgomery. Back row:

Edna Ramsey, Jim Woodward, Ann Crowl, Theresa Dunlap, David Farriman, Sandra Wojahn, Mike Payton, Leon Key, Gary Brooks, John Towry, Dennis Foster, and Larry Shackelford.

A G G I E S



OFFICERS, from the left: Larry Coltrane, President; Bill Grossman, Vice-President; Kendall Harrell, Aggie Princess; Calvin Flaharty, Secretary-Treasurer; Dixie McKinzie, Aggie Princes-62; Kenneth Powell, Reporter; Paul Roberts, Parliamentarian.



Bottom row, from the left: George Seals, Harry Knipe, Terry Jeans, Tom Riley, Sara Tatum, Larry Coltrane, Dixie McKinzie, Kendall Harrell, Bill Grossman, DeAnn Knight, Bill Willis, John Fuser, Ricky Whitehead. Second row: Mr. Synar, Joe Johnson, Paul Roberts, John Crowley, Danny Custle, Bill Jackson, Bruce Bell, Kenny Powell, Buck Pope, Bill Hendrickson, Sammy Hoeman, Chester Palmer, Jerry Garrison, Guy Watts, Marshall Stone, Mr. Miller. Third row: Jim Culpit, Jim Patrick,

John Price, Dale Bochman, Calvin Flaharty, Bob Ransom, Gary Baker, Bud Houser, David Biles, Gene Johnson, Richard Vietti. Fourth row: Steve Norcutt, Jesus Rodriguez, Solomon Shomer, Terry Smith, Ronnie Rosiere, Felix Fowler, Jimmy Rogers, Rex Prather, Ray Pretty, Ed Miller, Don Silvers, Don Gammons, Robert Rich, John Walters, Luther Peters, Ronnie Rench, Danny Westhaver, Dennis DeLozer, Marion Mitchell, Jerry Jagers, Leroy Johnson, Joe Clapp, Ronnie Coger.



Lamb judging



Beef judging



Swine judging



Giving oral reasons



Back row, from left: Earl Dunkleberger, Ann Atchley, Deanna Harrell, Sue Rothrock. Middle row: Rita Maxson, Cindy Wasson, Sandra Wojahn, Gail Little, Carolyn Cronk,

Donna Lewis, Margie Fields. Front row: Jeanne Burger, Bob Bethel, Sandy Goff.

MASQUERS



OFFICERS, from left: Ann Atchley, Alice Martin, Bob Bethel, Jeanne Burger, Sandy Goff.



Winnie-the-Pooh (Jeanne Burger) looks for honey.



Kanga (Alice Martin) and Roo (Gail Little) go hopping through the forest.

DRAMA



All of Pooh's friends pulled and pulled until he was freed from the rabbit hole.



Back row, from left: Cindy Wasson, Sandra Wojahn, Earl Dunkleberger, Jeanne Burger, John Carter, Rita Maxson, Gail Little, Sandy Goff, Ann Atchley. Front: Charles Burwell.

DEBATE



OFFICERS, from left: Charles Burwell, Jeanne Burger, John Carter.



OFFICERS, From the left: Glenda Quinton, secretary-treasurer; Billy Wilson, president; John Carter, vice-president; and Linda Holt, student council representative.

FRENCH CLUB



Front row, from the left: Joe Lucas, Gary Taylor, Richard Crook, Don Anderson, Earl Dunkelberger. Second row: Linda Holt, Linda Helmick, Gale Walker, Glenda Quinton, Lillian Milton, Meredith Smith, Diana Oliver, Verla Wood.

Third row: George Veirs, Jim Dixon, Cynthia Thorp, Frances Branstetter, Jim McLean, Stanley Denham, Lloyd Crumrine, Billy Wilson, John Carter, Alan Fraser, Clyde Faulkner, Foster Adams, Leon Baker, Mrs. Doris Burnes, sponsor.



Front row, from the left: Danette Mailath, Linda Wilson, Nancy Wadkins, Pamela Nuckolls, Selinda Shipley, Janet Turley, Linda Robertson. Second row: Leanna Walker, Louise Schoonover, Doris Robinson, Florence Wilson, Neva Wyatt, Sherry Bumgardner, Tommie Sue Duffield. Stand-

ing; Mrs. Burnes, Larry Gibson, David Sigsworth, Dennis Foster, Jerry Sutherland, Flo Gonzales, John Watts, Barry Heyl, Dedrick Fegley, Gary Garton, James Smallwood, Hosein Alavi, Bill Layton.

S
P
A
N
I
S
H



OFFICERS, Sitting: Danette Mailath, President; Standing, from the left: Gary Garton, Editor of Spanish News; David Sigsworth, Reporter; Jerry Sutherland, Student Council Representative; Louise Schoonover, Vice-President; Linda Robertson, Second Vice-President.

H O M E E C



OFFICERS, from the left, standing: Linda Wallace; Janet Piquet; Vivian Swanson; Diane McCune; Jana Irwin. Seated: Dixie McKinzie.



Back row, from the left: Helen Marie Brewer; Shirley Smart; Linda Roten; Nancy Klaus; Judy Troxell; Tommie Duffield; Dee Wallace; Lynda Kennon; Sandra Wojahn. Second row; Bonnie Synar, sponsor; Patricia Armstrong; Jane Gilman; Margaret Harrington; Martaret Ketchum; Diane McCune; Kathy Farney; Janice Cox; Margaret Cornelius; Carol Bonar; Mabel

Speaker, sponsor; Vivian Swanson. Third row, seated: Dixie McKinzie; Carol Armstrong; Glenda Quinton; Jo Ann Tallman; Janet Piquet; Darlene Brewer; Cheryl Martin; Eve Misener; Cordi Marcum; Barbara Duncan; Linda Wallace. Front row: Deanna Harrell; Linda Burnside; Linda Barrett; Linda Lynch; Joyce Madden; Jana Irwin; Mary Lisle.



From the left: Reverend Garland Spurgeon, Lester Daniels, Madolyne Dobbs, Mary Lisle, Sue Ball, Janet Piguet, Linda Wallace, Robyn Swanson, Ed Whistler, and Diane McCune.

W
E
S
L
E
Y

F
O
U
N
D
A
T
I
O
N



OFFICERS, From the left: Ed Whistler, vice-president; Don Price, sponsor; Linda Brown, secretary-treasurer; John Shafer, student council representative; and Linda Wallace, president.



B S U

OFFICERS, front row, from the left: Nancy Crissman, secretary; Charles Campbell, president; Pam Nuckolls, missions; Carolyn Burris, social chairman. Back row: Orville Pierce, songs; George Grigsby, noonday; Dale Proctor, songs; David Queen, songs; Earl Dunkelburger, noonday.



Singing, devotionals, and fellowship represent Baptist Student Union activities.

N E W M A N



OFFICERS – from the left: Sponsor – Reverend Father Francis Weiner; President – Clifford Walls; Vice President – Theresa Mitchell; Secretary – Carol Harmon; Student Council Representative – Beverly Cannon.



First row, from the left: Carol Harmon; Beverly Cannon; Theresa Mitchell; Kathy Fitzgibbins; Jackie Yust; Reverend Father Weiner. Second row; Carroll Burden; Ann Mocha; Francis Branstetter; Danette Maileth; Andrea Laffoon; Ouida Furnas. Third row: Bill Plotts; Steve Young; John Liddle;

Ed Redding; Bill Grossman; Clifford Walls. Fourth row: Dennis O'Laughlin; George Lipari; Dane Dixson; Chuck Branca; Jimmy Walker. Fifth row: Bob Sodergren; Jesus Rodriguez; Felix Faller; George Bulo.

INTERNATIONAL CLUB



Front row, from the left: Sirous Javaherian, Mohammad Mokfi, Ali Abyani, Penouiyle Sarkhosh, Hossein Azimi, Hossein Alavi. Standing: Bijan Barman, Feridoon Barakohana, Mohammad Moghtadari, Hossein Nadjafi, Abdor-

reza Moghayyed, Youness Ahmadian, Samad Moayed, Ali Habashi, Khosrow Chehrenezar, Abdol Majid Morshedi, Assadola Farazandeh, Parvis Vahedian, Milton Wardeh, and Mrs. Doris Burnes, sponsor.



OFFICERS, From the left: Mohammad Khanabadie, treasurer; Samad Moayed, student council representative; Abdorezza Moghayyed, president; and Ali Reshad, vice-president.

PRESS

CLUB



OFFICERS, From the left: Cynthia Seamster, Secretary; Clay Allen, President; Louise Schoonover, Student Council Representative; and Ann Mocha, Vice-President.



Seated, from the left: Janice Clay, Ann Mocha, Ruth Ann Wolf, Clay Allen, June Johnson, Cynthia Seamster, and Louise Schoonover. Standing: Dave Sigsworth, Jim Phillips, Ken Neptune, James Hale, and Gary Garton.





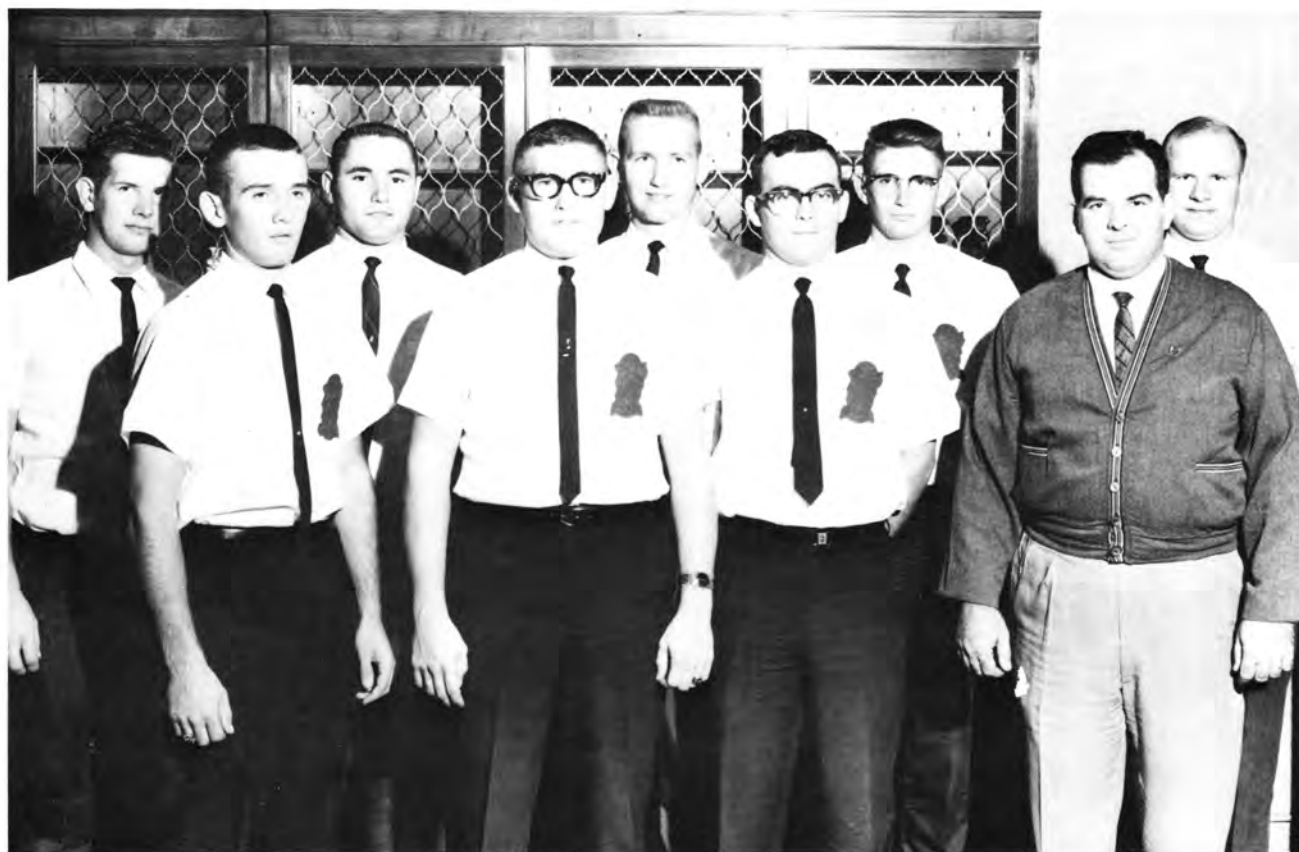
Front row, from the left: John Henry Harrison, Jackie Lewis, Britt Williams, Danny Haynes. Second row: Bill Plotts, Darryl Edenfield, Emory Harrison, Frank Curry, Charley Bolinger, George Kevern. Standing: Ray Worrell,

Leon Baker, Stanley Denham, Johnny Watson, Bob McCullough, David Walden, Randy Scott, Doug Gregory, Kenny Dean.



O
,
C
L
U
B

OFFICERS, From the left: Frank Curry, Secretary-Treasurer; Bob McCullough, Student Council Representative; George Kevern, President; John Watson, Vice-President.



Front row, from the left: Calvin Flaharty; John Bradsher; Earl Dunkelburger; E. J. Grieshaber, sponsor. Back row: Marion Mitchell; Raymond Worrell; Charles Foster; Larry Coltrane; Bob Combs.

INTERCOLLEGIATE KNIGHTS



OFFICERS, from the left: John Bradsher, president; Raymond Worrell, vice-president; Charles Foster, secretary.

MILITARY FRATERNITY



OFFICERS, From the left: Ronald Remke, secretary-treasurer; Charles Foster, president; James Smallwood, vice-president; and James Watters, student council representative.



Front row, from the left: Steve Turnbo, Daniel Brock, Steve Williams, William Crafton, William Parks, Paul Mobley, Sidney Galyean, Ronald Remke, Charles Foster, James Smallwood, James Watters, Dennis Richardson, Jimmy McLean, Gerald Hollaway, Jim Dixon, Herman Garton, and John Shumacher. Center row: Bill Layton, Herman Faulkner, Jerry Berry, Lonnie Hobbs, Joe Layton, John Towry,

Billy Wilson, Myron Dixon, George Hazlett, James Phillips, Robert Huggins, and Jerry Sutherland. Back row: Karl Brooks, Gary Hobson, Joe Clapp, Frankie Hardin, Clyde Faulkner, Larry Wells, Foster Adams, Robert Rench, John Carter, Phillip Bright, Richard Lawson, Charles Merriott, Barry Heyl, Clay Allen Emory Harrison, Charles Craig, James Hale.



Lt. Col. Hardy L. Holt
Professor of Air Science



Capt. Bobby J. Hayes
Instructor of Air Science

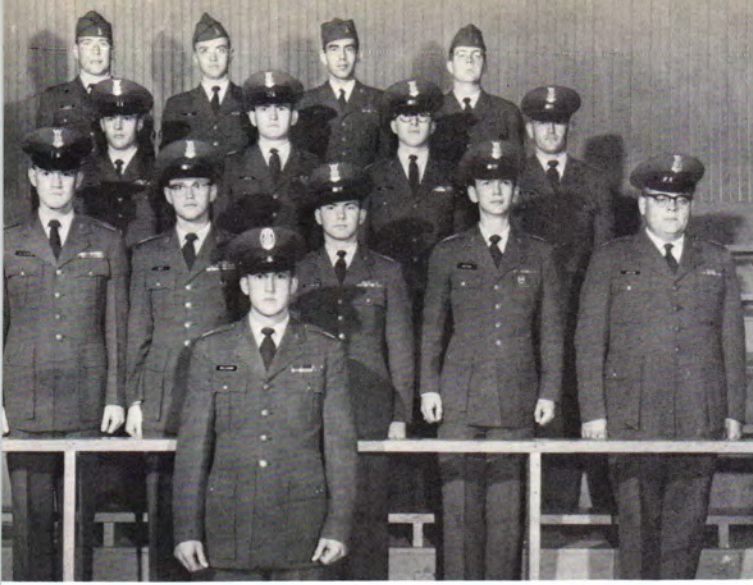
AFROTC



Capt. Patrick Keith
Instructor of Air Science



T/Sgt. Thomas A. Baird
S/Sgt. Richard Overholser
Office Personnel



GROUP STAFF, from the left, First row: Steve Williams, Group Commander. Second row: Everett F. Adams, Deputy Group Commander; Barry Heyl, Group Inspector; Jerry D. Sutherland, Administration; Paul E. Bryant, Material; Gary Garton, Information. Third row: Bill R. Layton, Operations; Richard Lawson, Special Projects; Paul Mobley, Personnel; Bill E. Wilson, Operations Asst. Back row: Kenneth W. Conduff, Operations Asst.; Gene Hall, Adm. Asst.; Lloyd Buffalo, Information Asst.; Leonard E. Eulitt, Information Asst.

Nancy Kelly is crowned as queen of the AFROTC group. She represents the unit as Honorary Cadet Colonel.



Squadron Commanders, From the left: Gerald C. Holloway, Paul Roberts, James H. Woodworth, Ronald Remke, Larry Wells, James B. Smallwood.



BAND

Band Commander: Gerald Holloway
Asst. Commander: Larry Shackelford



HONOR GUARD

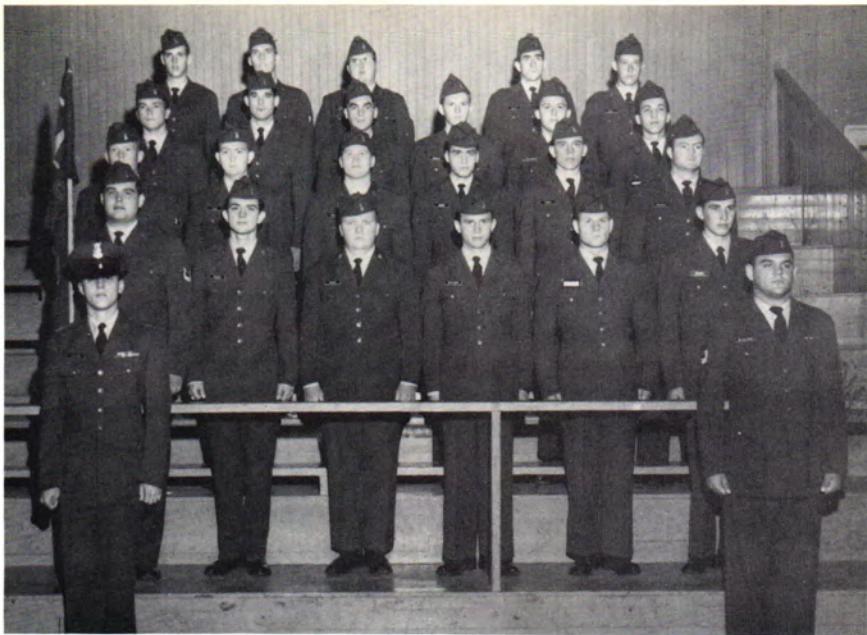
Commander: James B. Smallwood
Asst. Commander: Michael K. Grimes

DRILL TEAM

Commander: Jim McClean
Asst. Commander: Bob Rench



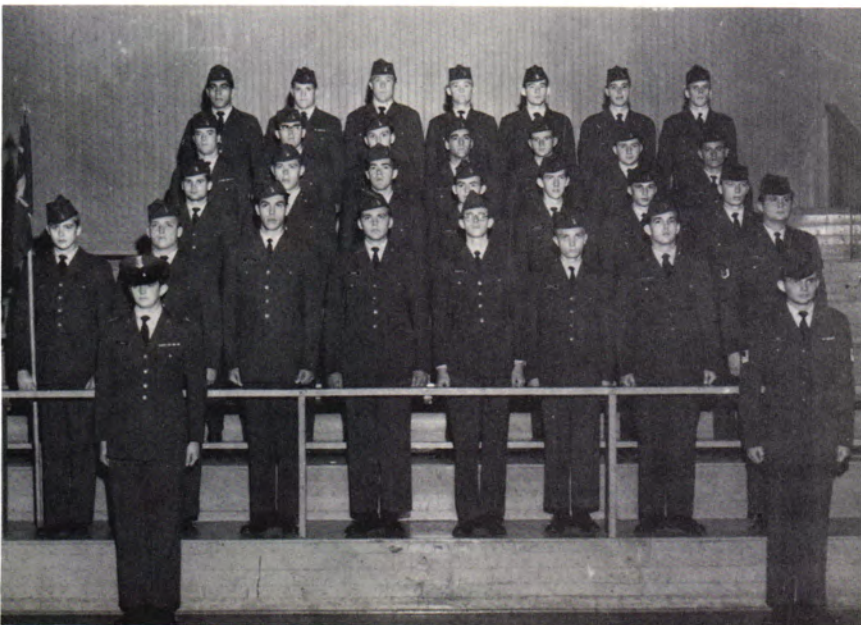
COLOR GUARD, From the left: J. N. Byers,
Danny Webster, Richard Rogers, Clarence
Ruby, Paul Haggerty (Not pictured).



SQUADRON 20A
Flight Commander: Joe L. Layton
Flight Sergeant: John McCullough



SQUADRON 20B
Flight Commander: Robert E. Huggins
Flight Sergeant: James E. Hale



SQUADRON 21A
Flight Commander: Ernest B. Price
Flight Sergeant: William P. Jager

SQUADRON 21B

Flight Commander: Larry C. Tilley
Asst. Commander: Aubie E. Campbell



SQUADRON 22A

Flight Commander: John H. Schumacher
Flight Sergeant: Robert C. Taylor

SQUADRON 22B

Asst. Flight Commander: Michael D. Thrailkill
Flight Sergeant: Marion L. Mitchell





23A
Flight Commander: Kenneth Powell
Asst. Commander: Edwin Redding



23B
Flight Commander: Clay W. Allen
Flight Sergeant: Raymond Worrell



24A
Flight Commander: Terry L. Arning
Flight Sergeant: Jerry A. Elsner



SQUADRON 24B
Flight Commander: Jim Dixon
Flight Sergeant: Terry Hardesty



SQUADRON 25A
Flight Commander: Charles Craig
Flight Sergeant: Marvin J. Tunnell



SQUADRON 25B
Flight Commander: Charles R. Foster
Flight Sergeant: Hershel G. Jaggars

SQUADRON 25C
Flight Commander: Richard Lawson
Flight Sergeant: Ronnie Vernon



1963
GOLDEN
NORSE

BEAT
1963



WOMEN
BASEMEN

00-167
NORTHEASTERN OKLAHOMA
A. & M. COLLEGE

COLLEGE
GUE

THE FRESHMAN CLASS
MIAMI OKLAHOMA
1963 '64
FRESHMAN ACTIVITIES CARD
00525

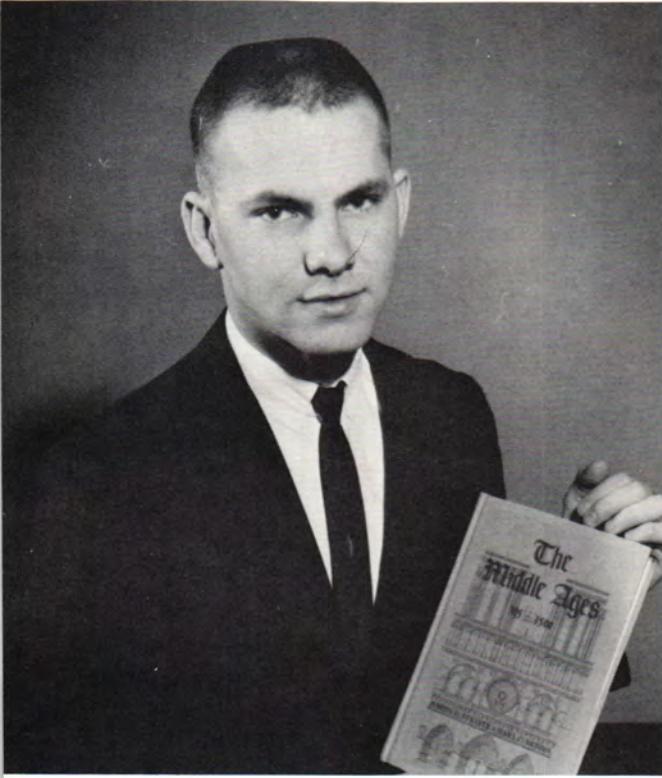
JOYCE MADDEN
John Madden



WINNER - 1963
N.E.O. ALL COLLEGE
JANUARY 12, 1964

ACTIVITIES

WHO'S WHO



Jerry D. Sutherland, a political science major is Cadet Group Commander, a senior member of the Military Fraternity, and chairman of the AFROTC orientation committee. He was the student council representative for the Spanish Club. He is a member of Phi Theta Kappa and president of the second floor of Dyer Hall.

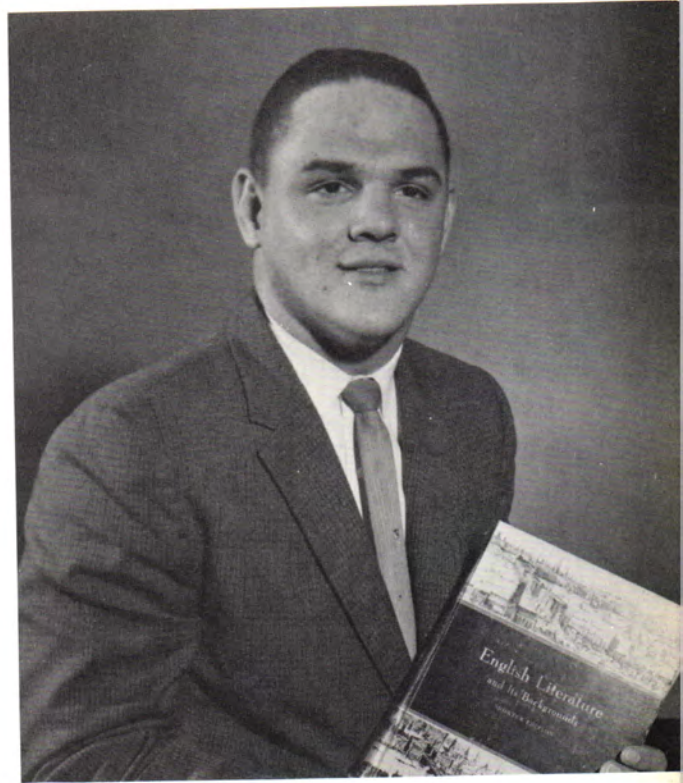
Sharon Nelson, an English major from Tulsa, has been active in campus activities. Her duties include those as head cheerleader, yearbook co-editor, and secretary for the English Department. She is a member of Phi Theta Kappa and the student council. She was a candidate for AFROTC queen and reigned as 1963 Track Queen.



Barry A. Heyl is an art major from Bartlesville. He is a member of the student council, Military Fraternity, Drama Club, Spanish Club, yearbook staff, and band. He was the construction designer for the 1962 freshman float and the 1963 Spanish Club float. He served as AFROTC Cadet Group Inspector. He is currently Band Commander.

1963-64

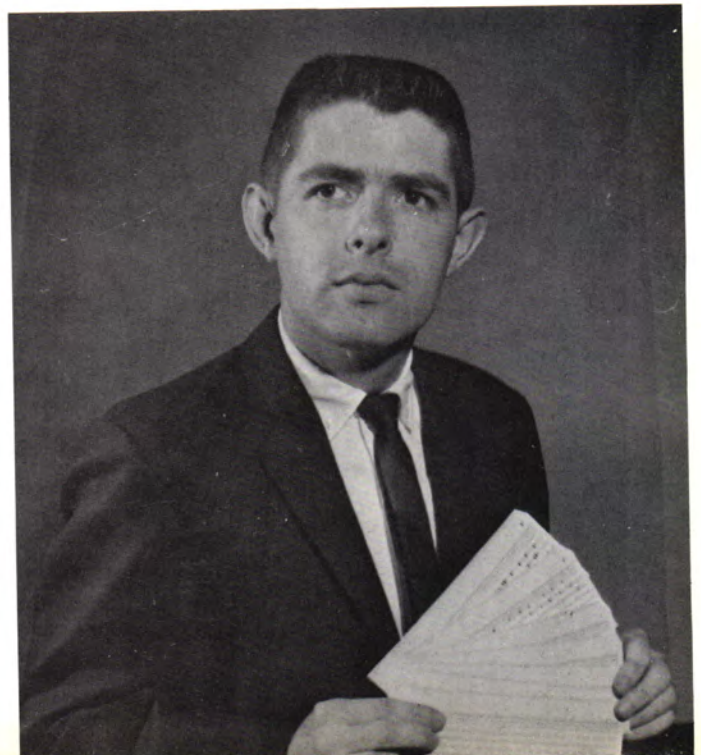
John Robert McCullough, an English major from Mt. Dora, Florida, is vice-president of the sophomore class, a member of Phi Theta Kappa, and president of the Baptist Student Union. He is a member of the football and baseball teams, student council, Drama Club, and "O" Club.



Linda Ann Wallace, a home economics major from Lenepah, Oklahoma, is a member of Phi Theta Kappa, the Dean's Honor Roll, president of the Wesley Foundation, vice-president of the Home Economics Club, vice-president of the girls' dormitory, and a member of the student council. She is an honorary member of the Aggie Club, a member of the Norse Stars, secretary for the science department, and chemistry lab assistant.



James Hildrith, who is majoring in the business field, is a leader in the Republican Party organization, a member of the Dean's Honor Roll, and assistant to Al Taylor in the IBM Department. He is first floor proctor and a leader in Dyer Hall.





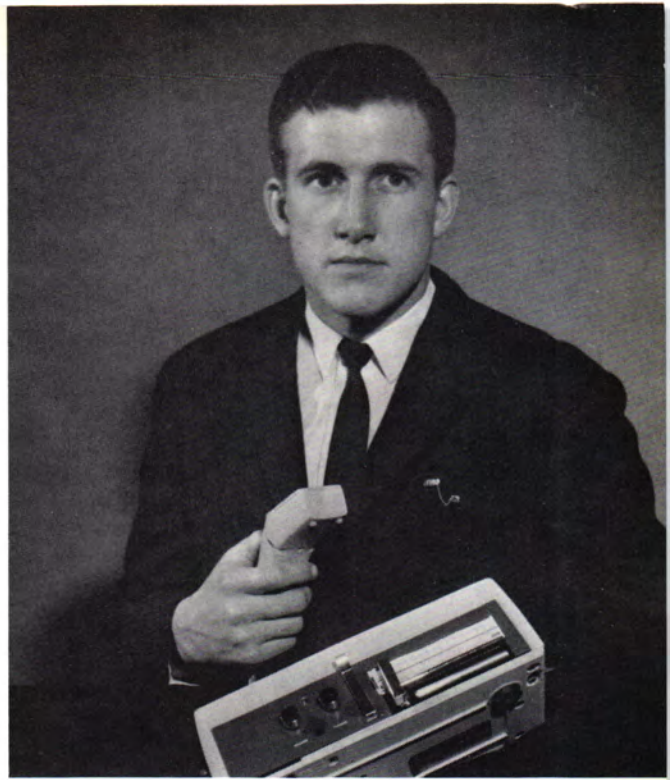
Terry Hedeman, an animal husbandry major from Lockwood, Missouri, is a member of the Dean's Honor Roll, vice-president of the student council, vice-president of Phi Theta Kappa, and vice-president of Dyer Hall. He is secretary of the Aggie Club, a member of the judging team, and is an official on Aggie Day. He received the outstanding freshman agriculture award in 1963.

Jeanne Burger, a drama major from Tulsa, is president of the Masquer's Club, Masquer's queen, representative-at-large in the student council, a member of the debate squad, and chorus. She placed high in oratory in several contests, including the state contest. She has played parts in eight plays during the past two years.



Raymond Worrell, a drafting and design major from Collinsville, Oklahoma, is president of the American Institute for Design and Drafting, vice-president of Intercollegiate Knights, and a member of the Industrial Technology Society. He is also a member of the football squad and the "O" Club.

Steve Williams, Grove, is a business management major. He is a member of the Business Club, Military Fraternity, the Dean's Honor Roll, and the Falcon's intramural basketball squad. He received the 1962 North American Award for the outstanding freshman AFROTC cadet and was the Group Commander of the AFROTC. He currently is special adviser to the Commandant of Cadets.



Donna Turney, a business major from Sand Springs, was freshman class treasurer, Viking queen attendant, and AFROTC queen candidate for two years. She is a member of the Business Club, Dean's Honor Roll, Phi Theta Kappa, yearbook staff, and Norse Stars. She reigned as the 1963 Football Queen.

Leroy Johnson, a soils major from Afton, is a member of Phi Theta Kappa, the Aggie Society, the Dean's Honor Roll, the President's Honor Roll, and student council representative-at-large. He serves as an Aggie Day official. He received the outstanding freshman agriculture award.





Larry H. Coltrane is president of Phi Theta Kappa, a member of the Dean's Honor Roll, and treasurer of Intercollegiate Knights. He is an Aggie Day official, is a member of the Aggie Society, and plays intramural basketball.



Sandra Wojahn, home economics major, is a member of the Dean's Honor Roll, Phi Theta Kappa, Chorus, Debate Club, and Masquer's Club. She holds the office of treasurer for the Home Economics Club and representative-at-large for the student council.



Curtis Collins, Jr. is an industrial education major from Welch, Oklahoma. He served as a secretary for the English Department his freshman year. He is a member of the Dean's Honor Roll and Industrial Technology Society. He was construction engineer for the ITS homecoming float this year. Currently, he serves as president of the Industrial Technology Society.



Dixie Kay McKinzie, a home economics major, is president of the Home Economics Club, is a member of the Dean's Honor Roll, and is student council representative. She reigned as Phi Theta Kappa Queen, Aggie Princess, and was a member of the Norse Stars.

The first reaction to the news, of many students, was disbelief. But then came the awful realization that there was no joke, the President was dying.

the union. Everybody just sat there, saying nothing, but feeling the impact of emotion. "The feeling here was one of shock and anger", one Dyer Hall resident

Association. He stated that on Tuesday he had taken one of the public tours of the White House. "We were told that the President was busy at the moment, but they

happen." These words sum up the feelings of many people across America and on the campus of NEO on that day.

announcement of the teams chosen to participate in the Junior Rose Bowl in Pasadena, Calif will be delayed until Tuesday due to the funeral today.

Norse Wind



STUDENT PUBLICATION OF

NORTHEASTERN OKLAHOMA A&M

VOLUME 20

MIAMI, OKLAHOMA—MONDAY

NOVEMBER 25, 1963

NO.



Gary Garton
Editor
Advertising Manager



June Johnson
Assistant Editor
Co-Editor



Ruth Ann Wolf
Assistant Editor
Co-Editor



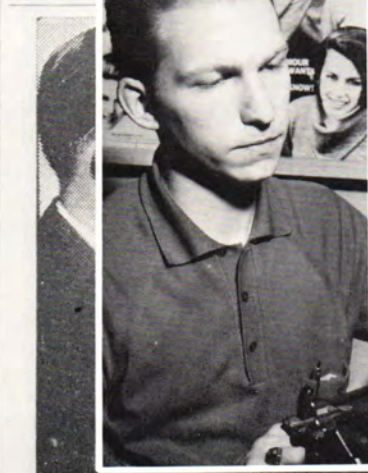
Clay Allen, Jr.
Make-up Editor
News Editor

cracker going off in a trash can." Nothing else happened so nothing was the
It was
common
the third floor and saw smoke coming through the air vent. He awakened the third floor proctor who contacted Mrs. Elrod.
The Dyer Hall proctors, with the aid of Dean Angle, have be-



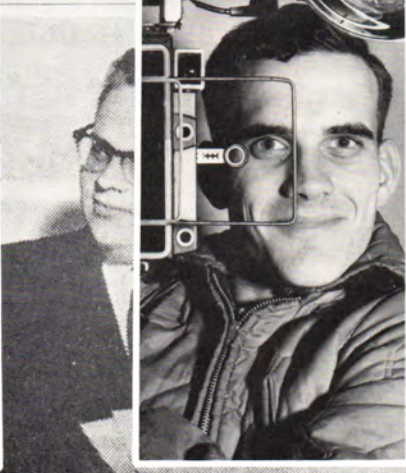
James R. Bond
Norse Wind Adviser

MEN FROM MARS? — not quite, just firemen decked out in oxygen engulfed picture v



David Sigsworth
Assistant Make-up Editor
Special Writer

source of smoke Dyer Hall Monday on Orloff.



Mike Grimes
Chief Photographer

Eligibility
AHAM
commission-notified Dr. Emory Harnegible be average, le. sely accused LeRoy Mont-Officials say sed his facts nscript from nnessee, the transferred
his view on ng. "We are cleared. The ts best team
ever and can best represent the Bowl at Pas-

men are alget the Rose Bowl bid after the ruling by Bolerjack. Bill Leischman, Jr. Rose Bowl game chairman, said earlier Monday, "If Northeastern A&M gets the green light on this they will hav t the easter tion will t

second place awards at the Oklahoma Collegiate Press Association's water Dr. J. Jouri

The Norse Wind, headed by student editor Gary Garton of Miami, was awarded first place awards in feature writing, future photography, and news picture photography.

Through information gained the convention, the staff hopes make their paper better than ever.

Dr. Emory Harnegible be average, le. sely accused LeRoy Mont-Officials say sed his facts nscript from nnessee, the transferred

Dr. Emory Harnegible be average, le. sely accused LeRoy Mont-Officials say sed his facts nscript from nnessee, the transferred

Dr. Emory Harnegible be average, le. sely accused LeRoy Mont-Officials say sed his facts nscript from nnessee, the transferred

Dr. Emory Harnegible be average, le. sely accused LeRoy Mont-Officials say sed his facts nscript from nnessee, the transferred

did this year, due to the football banquet's being on the same night. Also, the
ance will
ember 4, when it will be reamed the Rose Bowl Victory ance. It is being sponsored by e Military Fraternity.

WE WON BY GOLLY!—Norse Wind adviser James R. Bond congratulates Editor Gary Garton and assistant Editor Ruth Ann Wolf on the first place awards an were presented t Stillwater Nov. 5

Dr. Emory Harnegible be average, le. sely accused LeRoy Mont-Officials say sed his facts nscript from nnessee, the transferred

Dr. Emory Harnegible be average, le. sely accused LeRoy Mont-Officials say sed his facts nscript from nnessee, the transferred

NORSE STARS



Back row, from the left: Carolyn Grooms; Nancy Klaus; Lynn Ann Ellington. Fourth row: Donna Turner; June Budiselic; Janeth Kerpan; Glenda Quinton; Julia Sanders; Janet Ropp; Diana Oliver; Karen Kellogg; Ouida Furnas; Janie Turner; Phyllis White. Third row: Nancy Crockett; Sharon Cook; Ruthie Hamlin; Judy Little; Kay Martin; Peggy Meyer; Judy Fuller; Pat Mauller;

Carolyn Cronk; Sheri Allen. Second row: Linda Madden; Nancy Schooley; Danette Mailath; Mary Freeman; Louise Cordry; Nancy Kelly; Vicki Smith; Robyn Swanson; Diana Griffin. First row: Kayee Johnston; Carla Martin; Andrea Laffoon; Diane McCune; Carole Cump-ton; Sharon Smith; Cheryl Garner; Betty Bussey.

In perfect precision, the Norse Stars perform at a home game.





From the left: Karen Kellogg; Robyn Swanson; Carla Martin; Betty Bussey; Kayee Johnston.



From the left: Julia Sanders; Glenda Quinton; Nancy Kelly; Louise Cordry.



From the left: Carla Martin; Kayee Johnston.



Back row, from the left: Linda Shaw; Randy Iverson; Jim Pfeiffer; Alan Frasier; Charles Cole; John Deuser; Ted Whitehead;

Andrea Laffoon. Front row: Janet Ropp; Sharie Walker; Sharon Nelson; Linda Jones; Linda McCoy; Barbara Burke.

Morning pep rally before football team left for Trinidad, Colorado.





Pep Rally



Bonfire



SECOND SEMESTER CHEERLEADERS, from the left: Barbara Burke, Linda McCoy, Sharon Nelson, Linda Shaw, Sharie Walker, Linda Jones, Janet Ropp, and Andrea Laffoon.



... the queen is crowned.



... Queen Diana Oliver (center) and her two attendants, Nancy Kelly (left) and Kendall Harrell (right).

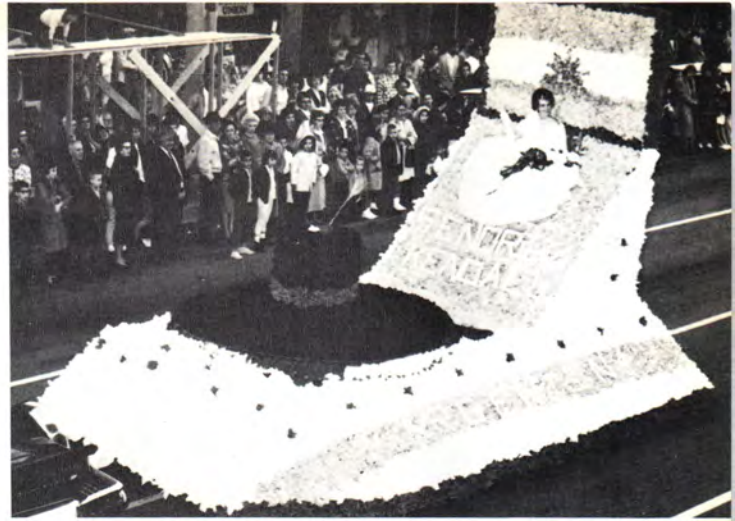
HOMECOMING 1963



Her Royal Highness, Diana Oliver and escort Charles Foster.



Freshman Class
Norway
Miss Phyllis Hendricks
First Place Float



Aggie Club
Argentina
Miss Kendall Harrell
Second Place Float

HOMECOMING



Industrial Technology Club
Ireland
Miss Margaret Cornelius
Third Place Float

PARADE



Sophomore Class
Japan
Miss Bertha Lorenz



Phi Theta Kappa
United States
Miss Dixie McKinzie



Commons and Kah-Ne-You-Ah Halls
Italy



Spanish Club
Mexico

HOME COMING



Home Economics Club
Holland

PARADE



Masquers Club
Australia
Miss Jeanne Burger



BSU
Israel



Dyer Hall
Switzerland



Business Club
Spain
Miss Jane Testerman

HOMECOMING



International Club
Jordan
Miss Behjat Reshad

PARADE



Pre-Med
Scotland
Miss Gloria Brown



AFROTC
Free China
Miss Nancy Kelly



Wesley Foundation
Germany



Engineers Club
Greece
Miss Diane Oliver

HOMECOMING



Cheerleaders

PARADE



Press Club
Greenland
Miss Nancy Schooley



French Club
France
Miss Glenda Quinton

YEARBOOK STAFF



Shown planning the Viking are, from the left: Sharon Nelson, Co-Editor; Sandra Goff, Co-Editor; Kenny Pack, Advertising Manager; and Judy Washington, Activities Editor.



Preparing layout for pages are, from the left: Sandy Goff, Theresa Dunlap, and Deanna Harrell.



Examining pictures to be used for the yearbook are, from the left: Barry Heyl, Jack Rucker, sponsor, and Donna Lewis.



Serious work and fun in preparing the yearbook pages are demonstrated by, from the left: Janeth Kerpan, Delores Davie, Mike Grimes, Judy Washington, and Linda Peddicord.

ADVERTISING



MIAMI SAVINGS AND LOAN ASSOCIATION

Wiley – Cole Rexall



2 South Main

Miami, Oklahoma

Security Bank and Trust Company



Member of the FDIC

Williams Jewelry



45 North Main

Miami, Oklahoma

Cooper Funeral Home



5 B N. W.

KI 2-3311

B & K Mens Wear



12 N. Main

KI 2-3818

Wellman's

Women's & Children's Clothing

17 S. Main

KI 2-2003

Sherwin Williams Co.

Miami, Oklahoma

Harvels

Barber Shop

Duff Miami Floral



KI 2-2864

1525 N. Main

Rainbow Cafe



Ki 2-9028

1214 N. Main

Plannett Cleaners & Furriers

128 N. Main
Miami, Oklahoma

E.C.'S AAA DRIVE-IN

225 N. Main

Miami, Oklahoma

Rainbow Trailer

1230 North Main
Miami, Oklahoma

J. C. Penney Company



Miami, Oklahoma

Hunt's Clothing



11 N. Main

Miami, Okla.

Newberry Builder's Supply

Main & Goodrich Blvd.



Miami, Okla.

Gosney Printing Co.



19 W. Central

Miami

KI 2-4163

Portraits – Oil Painting – Commercial
Weddings

UNDERWOOD STUDIO

106 North Main – Phone Ki 2-5860
Miami, Oklahoma

Miami Sales Company



208 N. Main

Miami, Okla.

General Contracting



Building Specialties

KI 2-2250
515 E. Central
Miami,
Oklahoma

Drive - In Prescription



11 West Central

Miami, Okla.

Martin's Music Co.



14 E. Central

KI 2-2235

WRIGHT PRINTING SERVICE

Miami, Oklahoma

KI 2-5065

MASSEY'S MATTRESS FACTORY



821 N. Main

KI 2-5795

Miami, Oklahoma

SANDERS BROTHER'S LUMBER & SUPPLY

Miami
1402 N. Main
KI 2-5581

Picher —
303 S. Connell
OR 3-1335



B. F. GOODRICH COMPANY

1000 Goodrich Blvd.
KI 2-3322

NEHRING'S BUILDING SUPPLY

2230 North Main
Miami, Oklahoma

MIAMI LUMBER COMPANY



1912 N. Main

Miami, Oklahoma

MONTGOMERY WARDS

The friendliest store in town.

Catalog Office

21 West Main

Miami, Oklahoma

KI 2-2852

NORTHEAST OKLAHOMA RAILROAD

Keithley's Market



209 S. Connell

Picher, Okla.

Family Music Center



17 S. Main

KI 2-9411

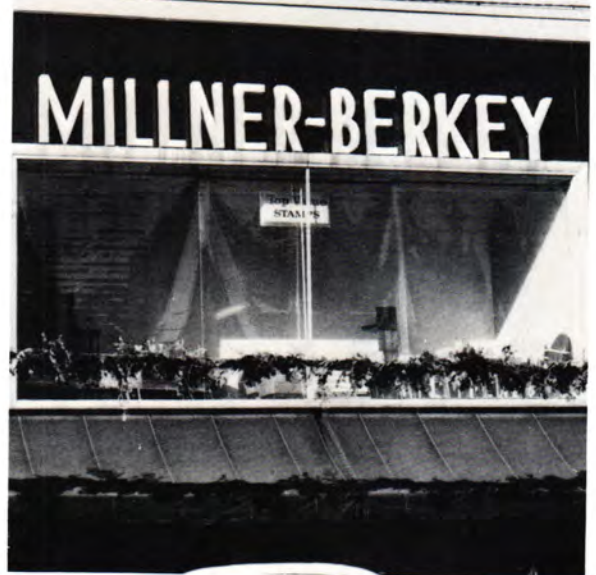
First National Bank

2 North Main



Millner-Berkey

Two complete department stores



Miami and Grove, Oklahoma

Farrier's IGA Thriftway

Miami, Oklahoma

Dr. Pepper and 7 Up

920 Broadway

Joplin, Mo.

NELSON FURNITURE COMPANY



17 North Main Miami, Okla.

DAWSON'S JEWELRY



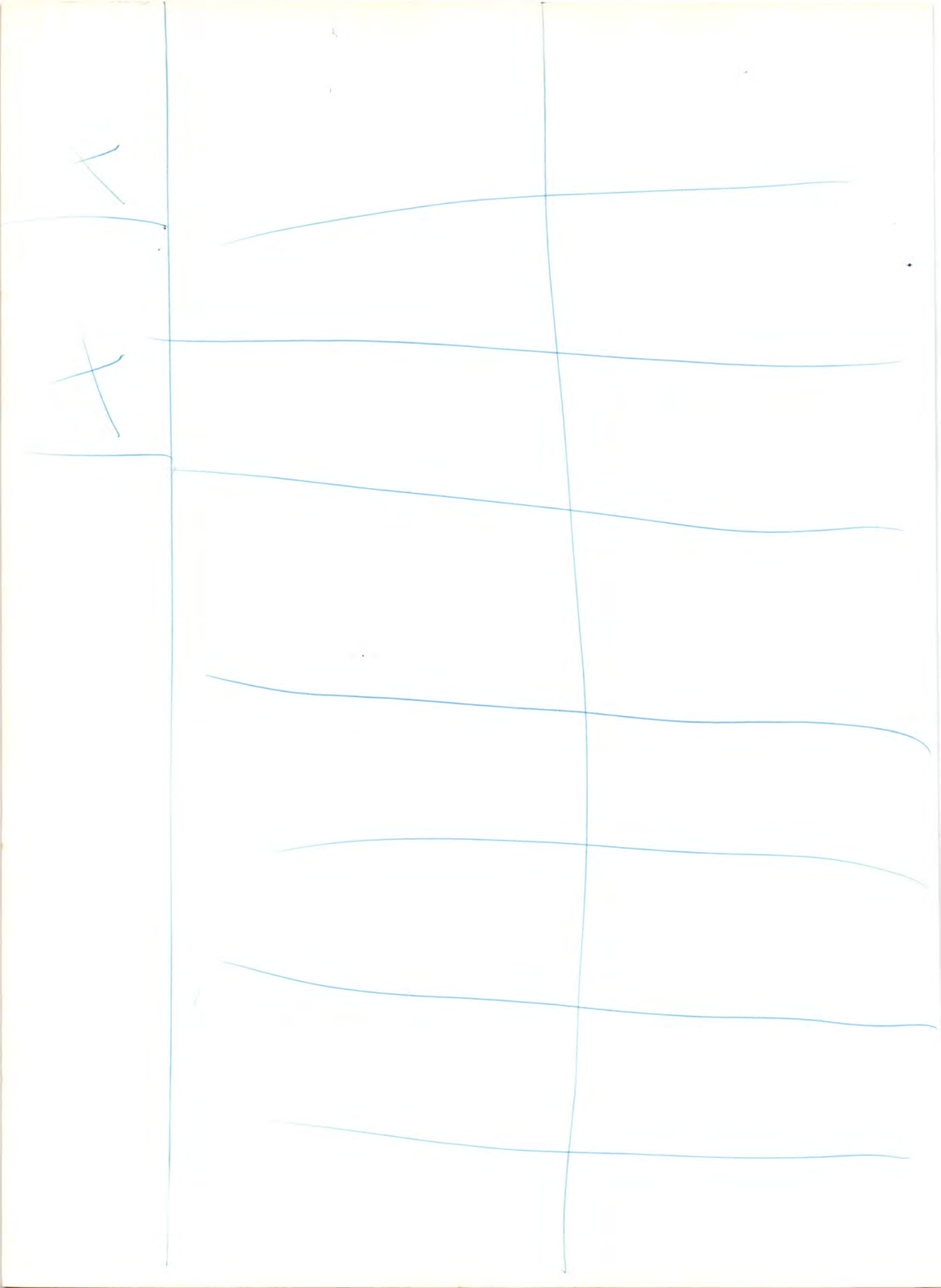
40 North Main KI 2-5566

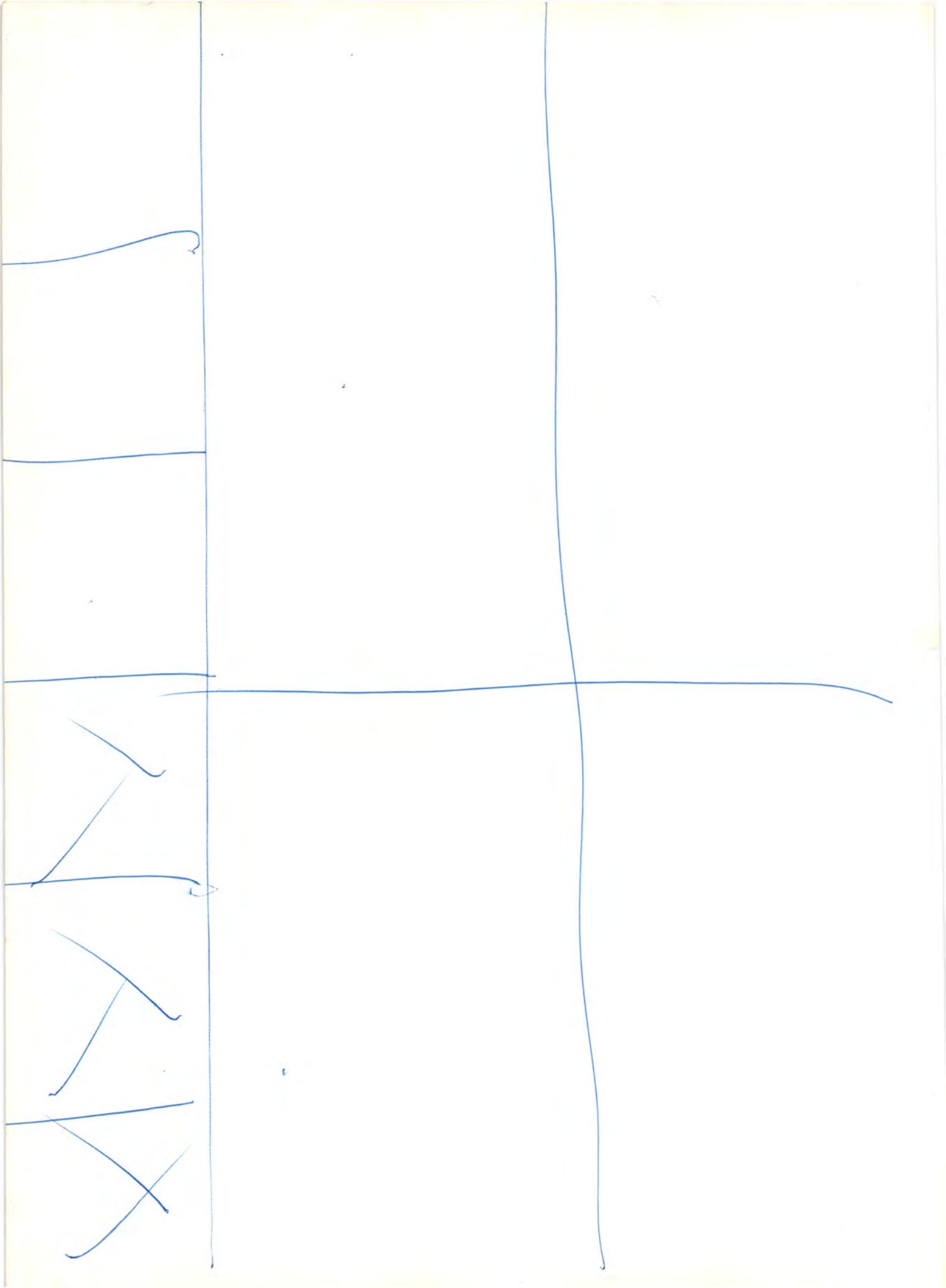
Owens Sporting Goods

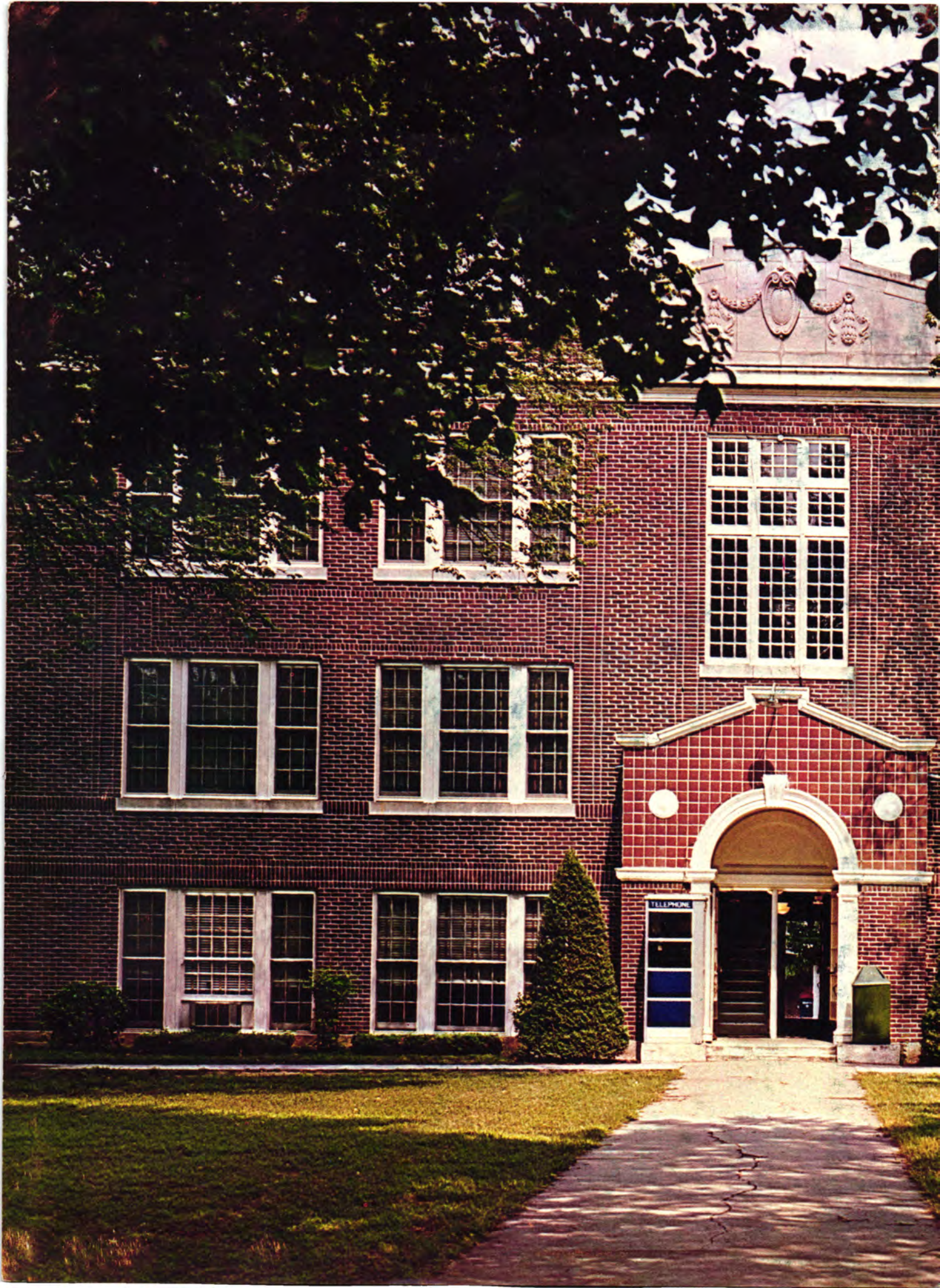
Joplin, Missouri

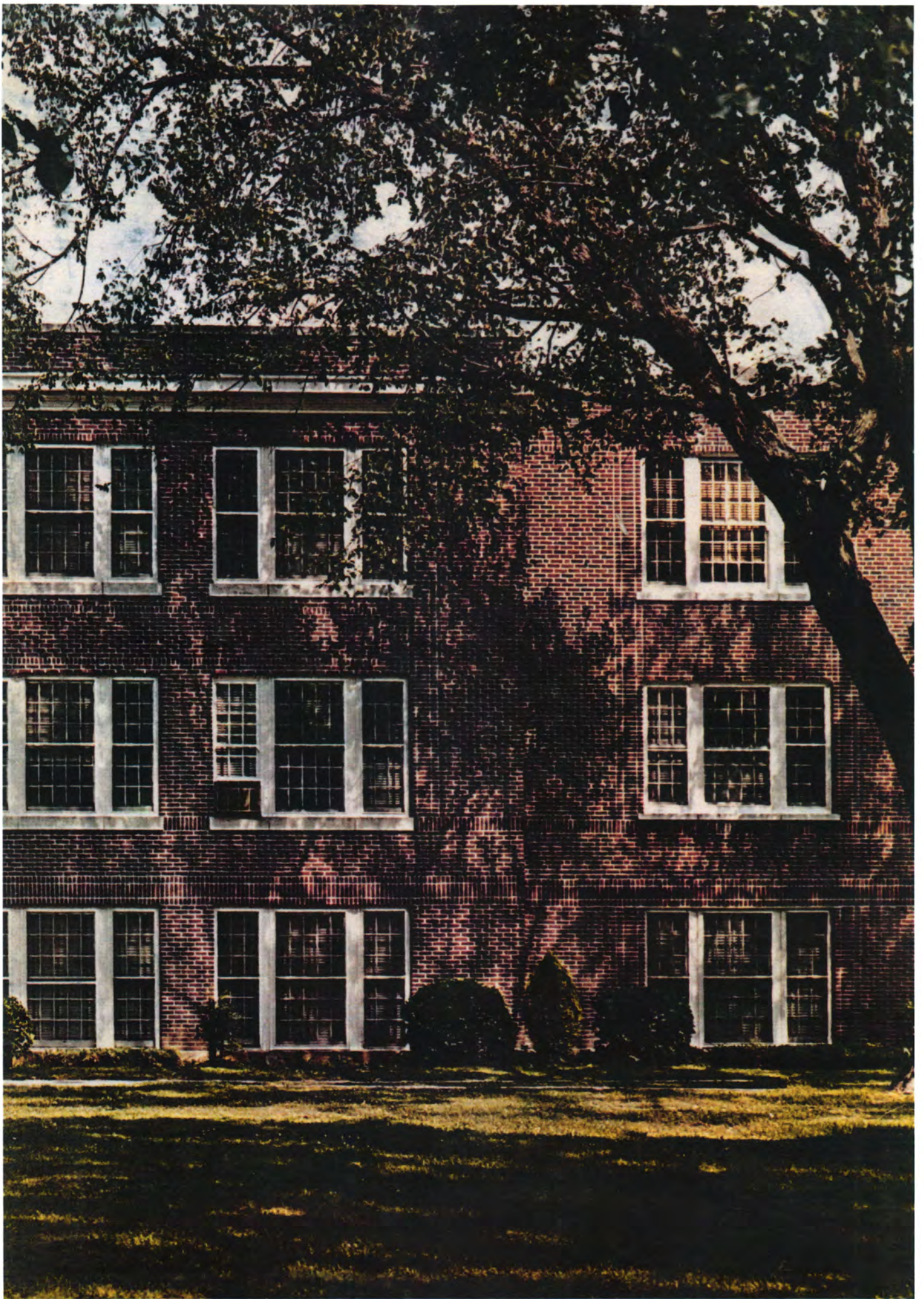
ORRICK SPARLIN PHOTOGRAPHY

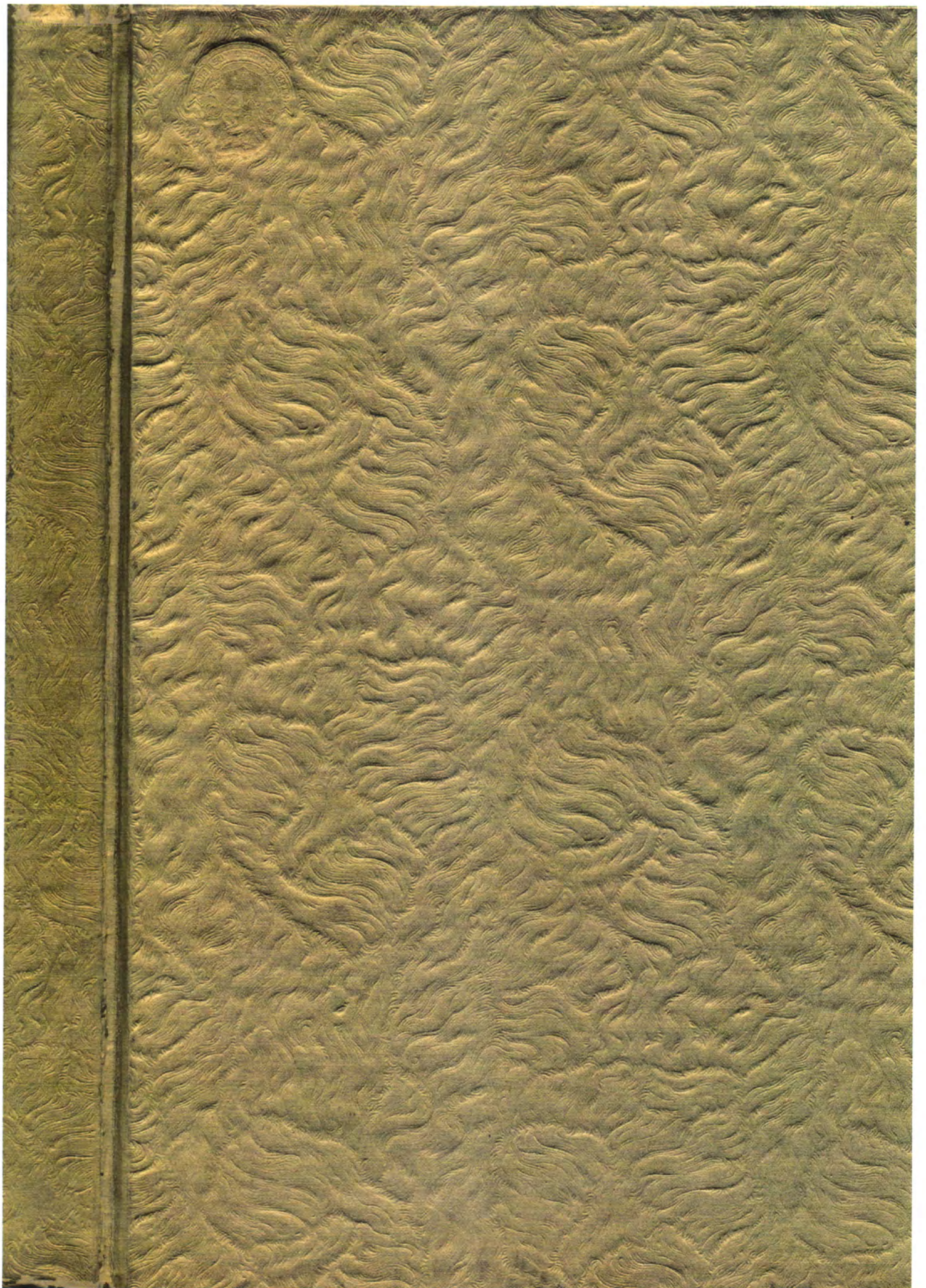
325 B N.W.
KI 2-4582 Miami, Okla.













NEO A&M College Archive Collection



The Viking – the NEO A&M College Yearbook

Digital copies of The Viking, Northeastern Oklahoma A&M College's annual yearbook, are available in .pdf format on the NEO website for non-commercial purposes only. Scans were created using the best available editions; where stains, color-fading, and contributed marks (usually signatures) were visible on the original they also appear in the digital copy. The edge of some pages in oversized editions may be partially lost due to width limitations on the scanning bed. NEO yearbook editions that do not appear on the website are not part of the collection at present. If you would like to donate a yearbook, please contact the NEO Library.