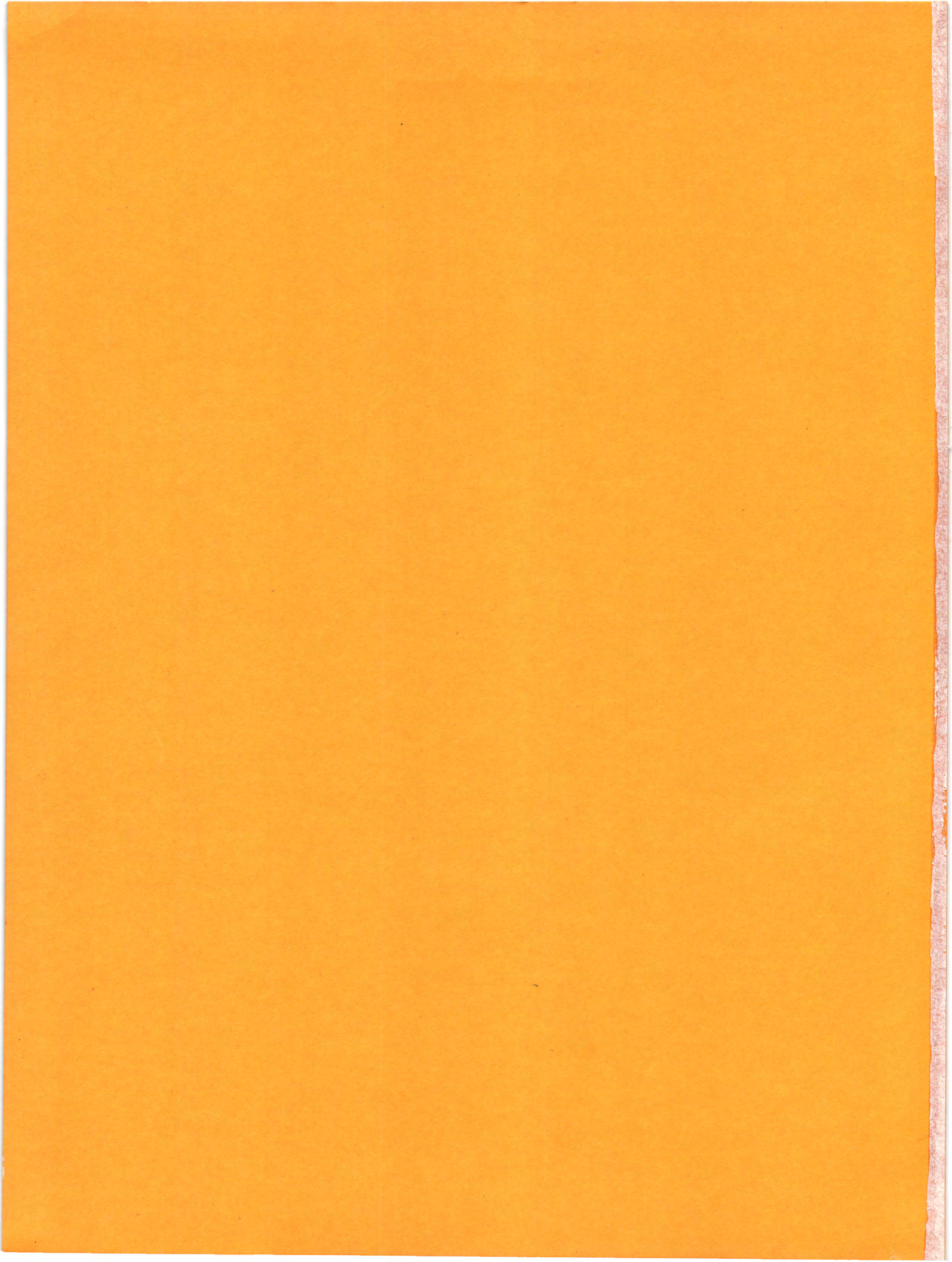




Viking '56



THE V I K I N G

1956

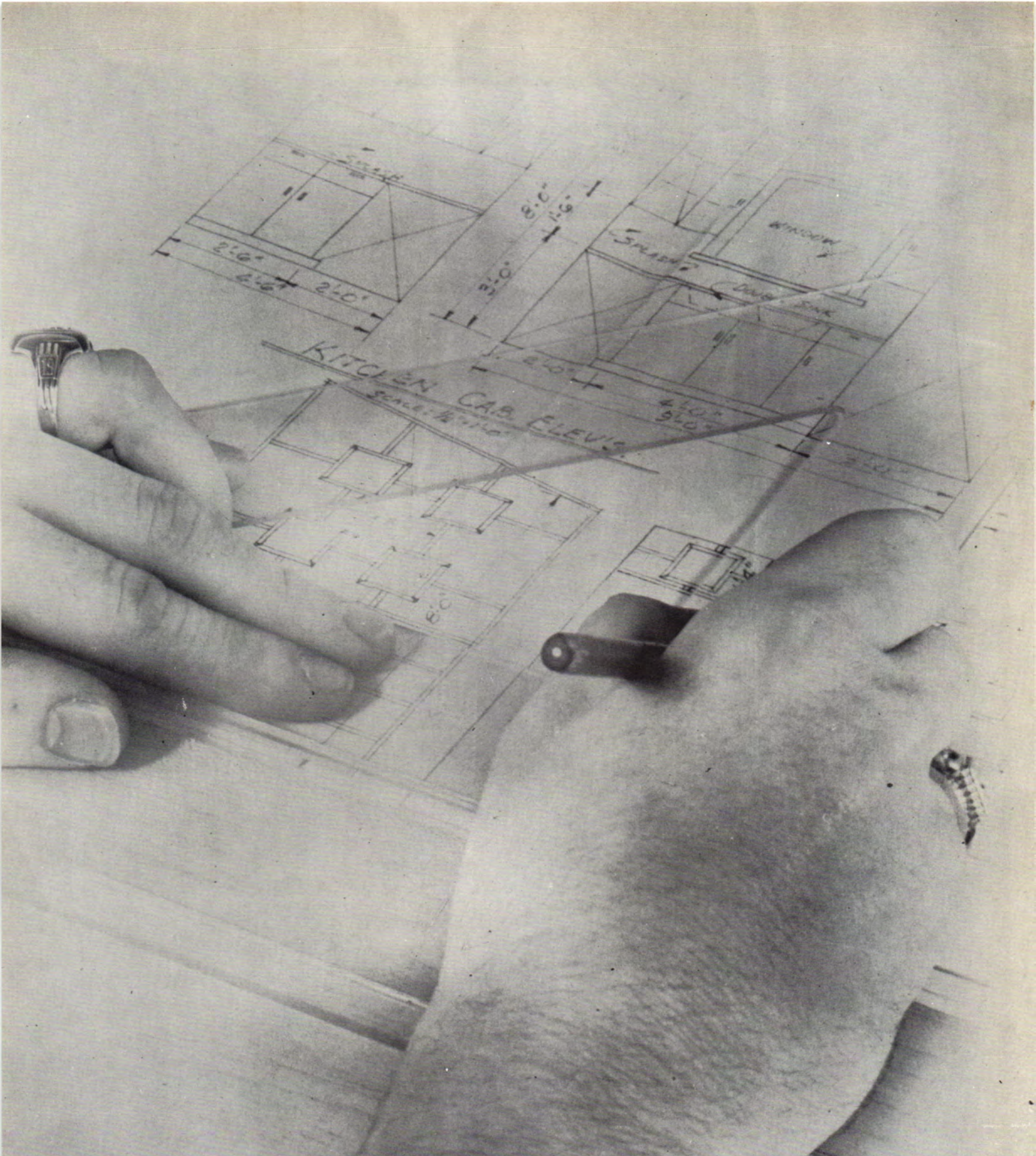


Editor **Leslie Aton**
Assistant Editor **Thomas Donelson**
Sports Editor **Diann Williams**
Sophomore Editor **Jo Ann Cantrell**
Freshman Editor **Shirley Jones**
Business Manager **Shirley Brady**
Copy Editor **Donna Anderson**
Activities **Ruth Ann Garrett**
Photographers **J. R. Bond, Frank Nieberding**
Sponsor **Jackie Rucker**
Staff **Mary Lois Roberts, Sharon Witzansky,**
Roberta Boyles, Billie Jean
Harrison, Charles Newman,
Pat Newburn



Dedication

We, the annual staff of 1956, wish to dedicate this book to the HANDS OF TIME. The HANDS OF TIME which have been used as symbols to present the various divisions of this book represent the events which may be the determining factors in the lives of those students who have so faithfully served and contributed to the development of the morals and standards of this institution. Prosperity and future happiness can only be determined by the joining together of all HANDS throughout TIME.



CAMPUS



Administration Building

Campus of Northeastern Oklahoma A & M College



President's Home

Faculty Lounge

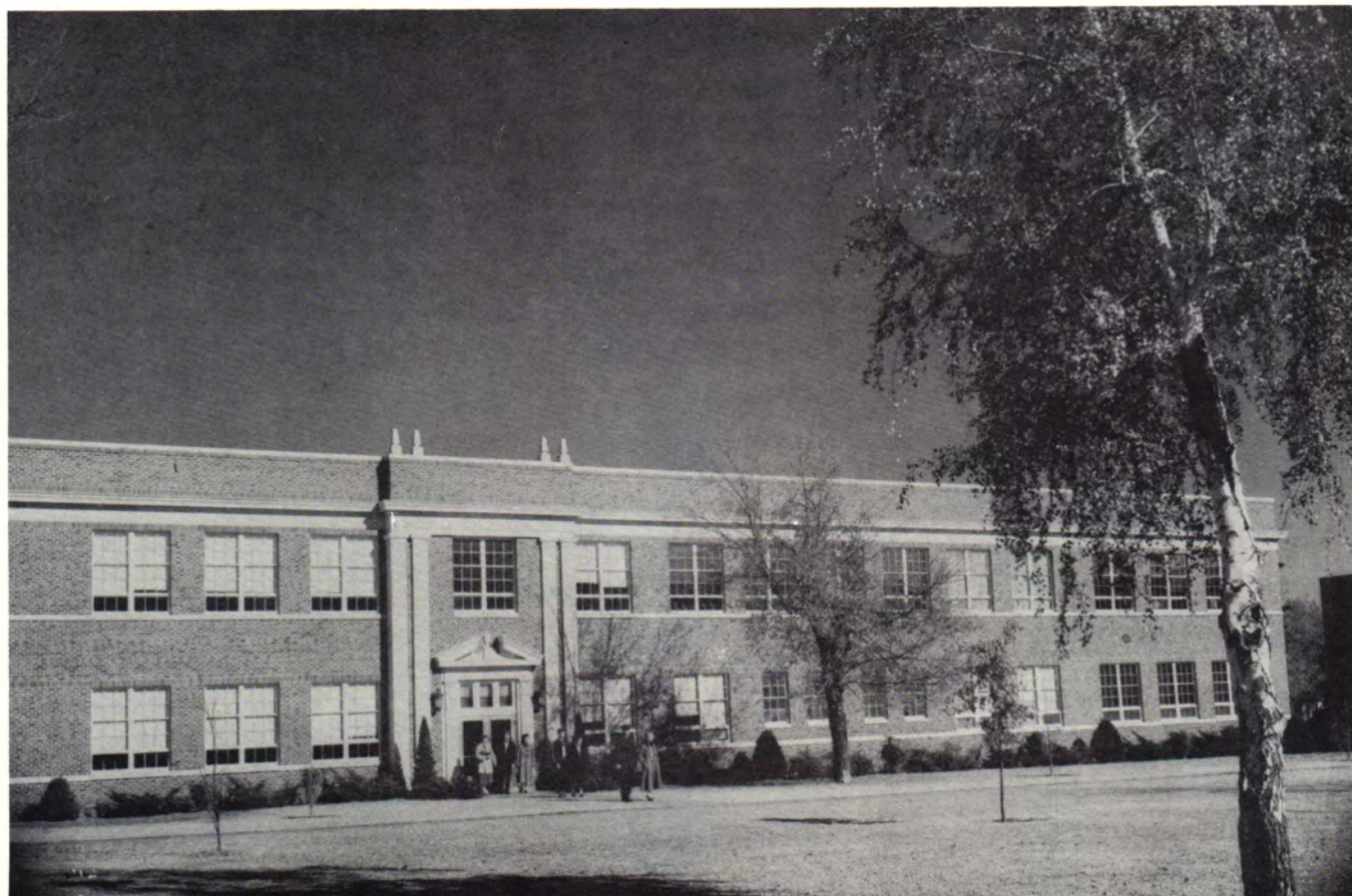


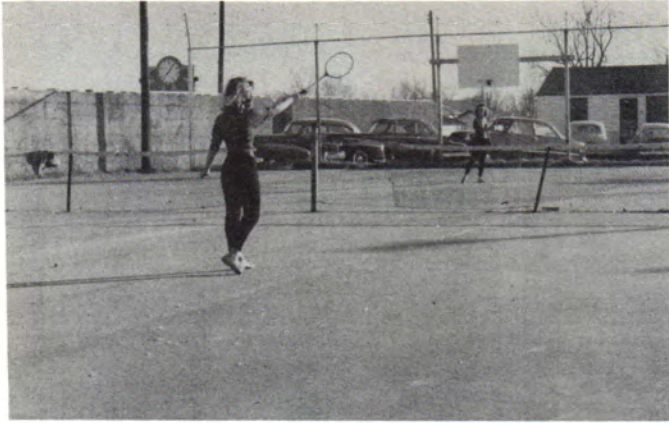
Metal Shop



Wood Shop

Agriculture and Science





Tennis Courts



Gymnasium and Auditorium



Apartments



Commons Hall



Whitehall



Boys' Dormitory



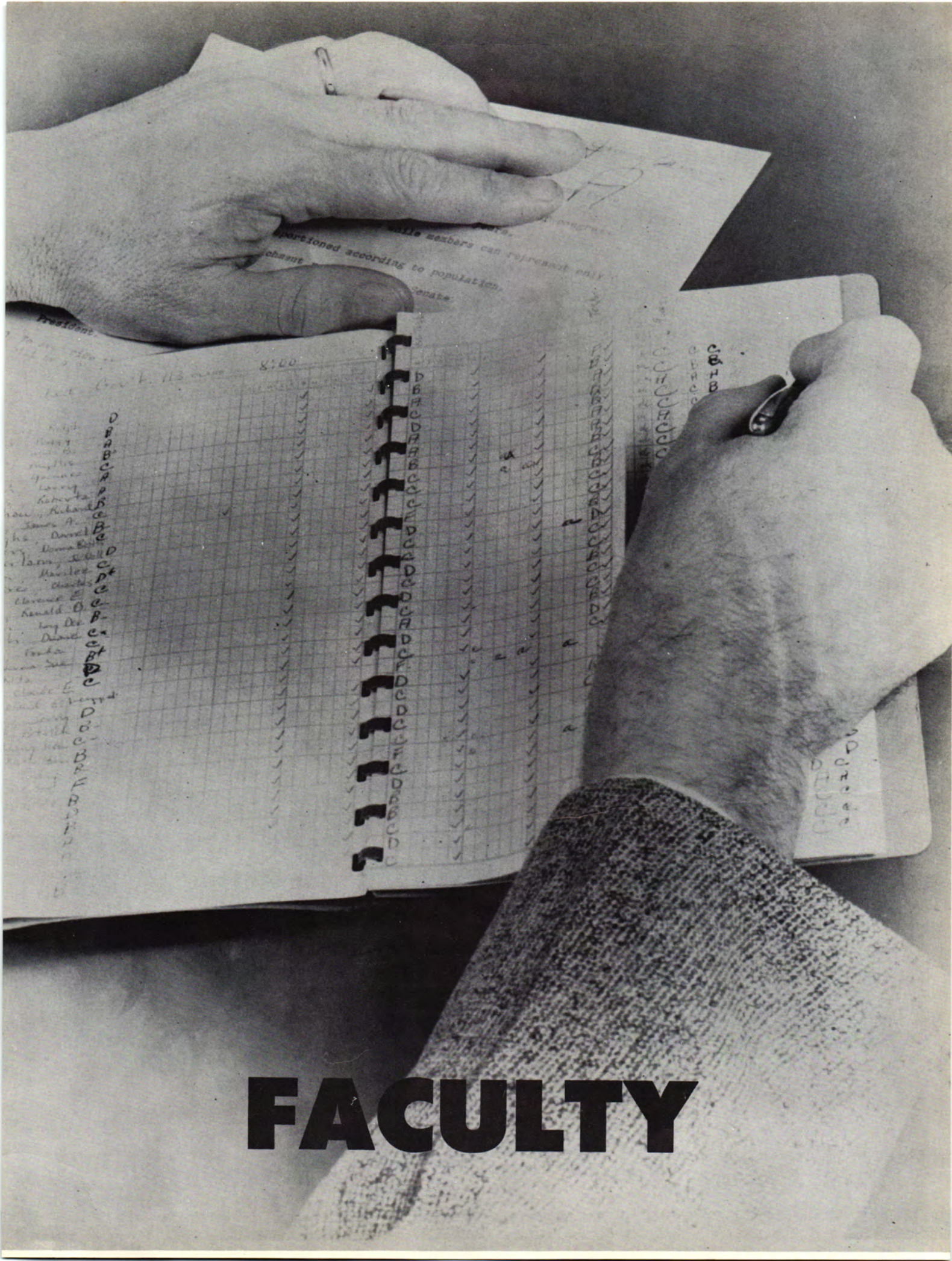
Student Union



Auto Mechanics



Music and Journalism



FACULTY

President
8:00
A
B
C
D
E
F
G
H
I
J
K
L
M
N
O
P
Q
R
S
T
U
V
W
X
Y
Z
AA
AB
AC
AD
AE
AF
AG
AH
AI
AJ
AK
AL
AM
AN
AO
AP
AQ
AR
AS
AT
AU
AV
AW
AX
AY
AZ
BA
BB
BC
BD
BE
BF
BG
BH
BI
BJ
BK
BL
BM
BN
BO
BP
BQ
BR
BS
BT
BU
BV
BW
BX
BY
BZ
CA
CB
CC
CD
CE
CF
CG
CH
CI
CJ
CK
CL
CM
CN
CO
CP
CQ
CR
CS
CT
CU
CV
CW
CX
CY
CZ
DA
DB
DC
DD
DE
DF
DG
DH
DI
DJ
DK
DL
DM
DN
DO
DP
DQ
DR
DS
DT
DU
DV
DW
DX
DY
DZ
EA
EB
EC
ED
EE
EF
EG
EH
EI
EJ
EK
EL
EM
EN
EO
EP
EQ
ER
ES
ET
EU
EV
EW
EX
EY
EZ
FA
FB
FC
FD
FE
FF
FG
FH
FI
FJ
FK
FL
FM
FN
FO
FP
FQ
FR
FS
FT
FU
FV
FW
FX
FY
FZ
GA
GB
GC
GD
GE
GF
GG
GH
GI
GJ
GK
GL
GM
GN
GO
GP
GQ
GR
GS
GT
GU
GV
GW
GX
GY
GZ
HA
HB
HC
HD
HE
HF
HG
HH
HI
HJ
HK
HL
HM
HN
HO
HP
HQ
HR
HS
HT
HU
HV
HW
HX
HY
HZ
IA
IB
IC
ID
IE
IF
IG
IH
II
IJ
IK
IL
IM
IN
IO
IP
IQ
IR
IS
IT
IU
IV
IW
IX
IY
IZ
JA
JB
JC
JD
JE
JF
JG
JH
JI
JJ
JK
JL
JM
JN
JO
JP
JQ
JR
JS
JT
JU
JV
JW
JX
JY
JZ
KA
KB
KC
KD
KE
KF
KG
KH
KI
KJ
KK
KL
KM
KN
KO
KP
KQ
KR
KS
KT
KU
KV
KW
KX
KY
KZ
LA
LB
LC
LD
LE
LF
LG
LH
LI
LJ
LK
LL
LM
LN
LO
LP
LQ
LR
LS
LT
LU
LV
LW
LX
LY
LZ
MA
MB
MC
MD
ME
MF
MG
MH
MI
MJ
MK
ML
MM
MN
MO
MP
MQ
MR
MS
MT
MU
MV
MW
MX
MY
MZ
NA
NB
NC
ND
NE
NF
NG
NH
NI
NJ
NK
NL
NM
NN
NO
NP
NQ
NR
NS
NT
NU
NV
NW
NX
NY
NZ
OA
OB
OC
OD
OE
OF
OG
OH
OI
OJ
OK
OL
OM
ON
OO
OP
OQ
OR
OS
OT
OU
OV
OW
OX
OY
OZ
PA
PB
PC
PD
PE
PF
PG
PH
PI
PJ
PK
PL
PM
PN
PO
PP
PQ
PR
PS
PT
PU
PV
PW
PX
PY
PZ
QA
QB
QC
QD
QE
QF
QG
QH
QI
QJ
QK
QL
QM
QN
QO
QP
QQ
QR
QS
QT
QU
QV
QW
QX
QY
QZ
RA
RB
RC
RD
RE
RF
RG
RH
RI
RJ
RK
RL
RM
RN
RO
RP
RQ
RR
RS
RT
RU
RV
RW
RX
RY
RZ
SA
SB
SC
SD
SE
SF
SG
SH
SI
SJ
SK
SL
SM
SN
SO
SP
SQ
SR
SS
ST
SU
SV
SW
SX
SY
SZ
TA
TB
TC
TD
TE
TF
TG
TH
TI
TJ
TK
TL
TM
TN
TO
TP
TQ
TR
TS
TT
TU
TV
TW
TX
TY
TZ
UA
UB
UC
UD
UE
UF
UG
UH
UI
UJ
UK
UL
UM
UN
UO
UP
UQ
UR
US
UT
UU
UV
UW
UX
UY
UZ
VA
VB
VC
VD
VE
VF
VG
VH
VI
VJ
VK
VL
VM
VN
VO
VP
VQ
VR
VS
VT
VU
VV
VW
VX
VY
VZ
WA
WB
WC
WD
WE
WF
WG
WH
WI
WJ
WK
WL
WM
WN
WO
WP
WQ
WR
WS
WT
WU
WV
WW
WX
WY
WZ
XA
XB
XC
XD
XE
XF
XG
XH
XI
XJ
XK
XL
XM
XN
XO
XP
XQ
XR
XS
XT
XU
XV
XW
XX
XY
XZ
YA
YB
YC
YD
YE
YF
YG
YH
YI
YJ
YK
YL
YM
YN
YO
YP
YQ
YR
YS
YT
YU
YV
YW
YX
YY
YZ
ZA
ZB
ZC
ZD
ZE
ZF
ZG
ZH
ZI
ZJ
ZK
ZL
ZM
ZN
ZO
ZP
ZQ
ZR
ZS
ZT
ZU
ZV
ZW
ZX
ZY
ZZ

Handwritten notes on the right page of the notebook, including a vertical list of letters and numbers.



The President of our College,

Dr. Bruce G. Carter





THE BOARD OF REGENTS FOR THE OKLAHOMA A. AND M. COLLEGE

Left to right, seated: P. E. Harrill of Oklahoma City, secretary; Fred G. Drummond of Hominy; Elmer Harber of Shawnee, chairman; and O. O. Lackey of Hitchita, vice-chairman. *Left to right, standing:* W. R. Williams of Altus, Earl Russell of Duncan, Roy Nall of Boise City, Harold Hutton of Oklahoma City; and Forrest McIntire of Oklahoma City, administrative assistant. Not in the picture is R. T. Stuart of Oklahoma City.



The Honorable Raymond Gary, Governor of Oklahoma.



Governor Raymond Gary, Chief Aah-Sah-Dah-Quitty-Puhts-Ki.



Faye Vann



Cecil Ferree



William Russell



Harry Synar



J. C. Miller



Homa Thomas



Gladys Copen



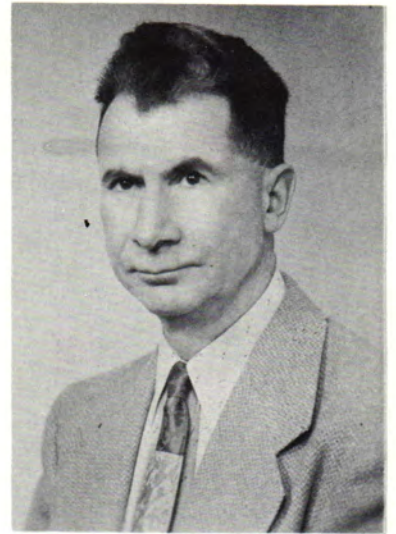
Carl Finke



Oren Need



John Thiesing



Frank Cunningham



Ruby Campbell



Ruth Arrington



Bruce Owen



Jackie Rucker



Ray Vanderberg



Kenneth Richards



Robert Swanson



Mable Speaker



E. J. Grieshaber



Waymon C. Gibson



Charles Wilson



Betty Ball



S. A. Roberts



Merrill Chaney



Joe Ables



Elmo Benedict



L. E. Maples



Laura Catlin



Capt. Leonard Sherrow



Lt. Bill Whatley



Sgt. Joe Pottorff



Melvin Shipley



Elizabeth Paine



Mildred Gibson



Elizabeth Hutts



Robina Yeager



Don Dyer



Mrs. Don Dyer



Mrs. Cecil Feree



SOPH

CLASS



Bob Trickey-Agriculture
Class President
Vinita, Oklahoma



Harold Gallagher-Drafting
Broken Arrow, Oklahoma



John Turner-Business
Miami, Oklahoma

David Combs-Business
Tulsa, Oklahoma



Tony Booth-Agriculture
Miami, Oklahoma

J. C. Duensing-Business
Broken Arrow, Oklahoma

Terry Middleton-Math
Fairland, Oklahoma



John Kapp-G. W. L.
Vinita, Oklahoma

Sam Pierce-Animal Husbandry
Welch, Oklahoma

Charles Griffity-Engineering
Pawhuska, Oklahoma



Don Cravens-Engineering
Spavinaw, Oklahoma



Leland Slinkard-Education
Jane, Missouri





Joe Yancey-*Accounting*
Claremore, Oklahoma



Jim Rucker-*Animal Husbandry*
Fletcher, Oklahoma

Doyle Ballantine-*Business*
Dewey, Oklahoma



Beulah Beard-*Elementary Education*
Grove, Oklahoma

Glenna Frisbie-*Business*
Picher, Oklahoma

Rose Ann Masters-*Journalism*
Miami, Oklahoma



Norman Kendrick-*Agriculture*
Rose, Oklahoma

Les Miller-*General*
Afton, Oklahoma

James Bard-*Biology*
Chelsea, Oklahoma



Bob Harris-*Math*
Oologah, Oklahoma

Bill Jarvis-*Agriculture*
Chandler, Oklahoma



Bob Martin-*Physical Education*
Sand Springs, Oklahoma





Henry Collins-Engineering
Flovilla, Georgia



Clyde Van Sickle-Chemical Eng.
Okmulgee, Oklahoma

Jerry Haynes-Liberal Arts
Chelsea, Oklahoma



Bob Short-Arts & Sciences
Picher, Oklahoma

Sharon Witzansky-Elementary Ed.
Picher, Oklahoma

Marie Payton-Elementary Education
Miami, Oklahoma



Jim Parker-Chemistry
Miami, Oklahoma

Ralph Berg-Business
Tulsa, Oklahoma

Ed Miller-Engineering
Harrisburg, Illinois



Melvin Rakes-Agriculture
Seneca, Missouri

Carl Martin-General
Chelsea, Oklahoma



Bert Connelly-Industrial Education
Miami, Oklahoma





Roderic Griffin-Engineering
Sapulpa, Oklahoma

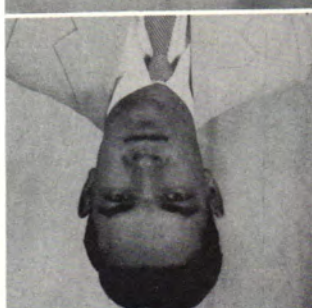
John Lingren, General
Chelsea, Oklahoma
Bob Maples-A. & R.
Miami, Oklahoma

Phil Follis-Business
Miami, Oklahoma
Joanna Martin-Elementary Ed.
Chelsea, Oklahoma
Jean Harrison-Elementary Ed.
Grove, Oklahoma

Wilbur Kaylor-Business
Miami, Oklahoma
Jo Ann Kaylor-Business
Miami, Oklahoma
Faye Sloan-Business
Miami, Oklahoma

Ronnie Farrington-Agriculture
Welch, Oklahoma
Calvin Hogan-Agriculture
Coweta, Oklahoma

Duane Crabaugh-Business
Adair, Oklahoma





Bob Hunter-Physical Education
Pryor, Oklahoma



James Messamore-Business
Tulsa, Oklahoma



William Waddle-Accounting
Miami, Oklahoma



Norma Sue Davis-Business
Miami, Oklahoma



Ann Cowan-Langauge
Miami, Oklahoma



Dickie Poplin-Animal Husbandry
Adair, Oklahoma



Betty Golden-Music
Bluejacket, Oklahoma



Max Ury-Engineering
Sharon Springs, Kansas



Ronnie Haney-Industrial Education
Big Cabin, Oklahoma

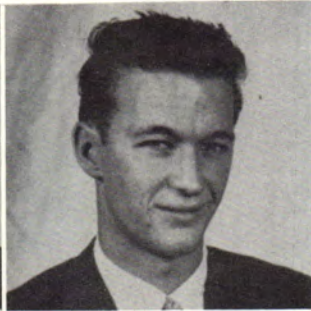


Hashem Charaibeh-Engineering
Irbid, Jordan





Marlin Thompson-*Business*
Miami, Oklahoma



Ralph Terry-*Business*
Chelsea, Oklahoma

Willis Johnson-*Engineering*
Coweta, Oklahoma



Nicolette Brown-*Art*
Dayton, Ohio

Faye Scott-*Business*
Commerce, Oklahoma

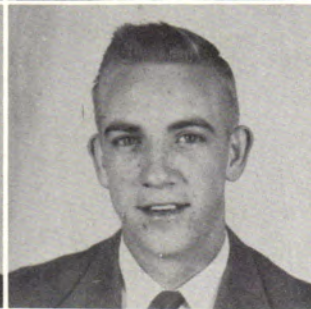
Donald Stevens-*Industrial Ed.*
Commerce, Oklahoma



Dan McRae-*English*
Miami, Oklahoma

Virginia Watt-*Business Education*
Strang, Oklahoma

Helen Johnston-*Elementary Ed.*
Miami, Oklahoma



Ted Williams-*Industrial*
Pryor, Oklahoma

Raymond Colclasure-*Education*
Anadarko, Oklahoma



Reyad Hijazi-*Civil Engineering*
Cairo, Egypt





Beverly Rowden-Physical Therapy
Okmulgee, Oklahoma



Bob Preston-Industrial Education
Sand Springs, Oklahoma

Sherman Hanes-Industrial Ed.
Claremore, Oklahoma



Phil Lackey-Industrial Ed.
Sand Springs, Oklahoma

Dottie Seward-Business
Miami, Oklahoma

Elsie Hunt-Zoology
Pleasantville, Iowa



Warren Berry-General
Nowata, Oklahoma

Leslie Aton-Music
Picher, Oklahoma

Karen Hughes-Business Education
Adair, Oklahoma



Moji Mehrooz-Petroleum Eng.
Bahram, Teheran

Lowell Watts-Petroleum Eng.
Wyandotte, Oklahoma



Frank Byard-Engineering
Quapaw, Oklahoma





Diann Williams—*Business*
Kansas City, Kansas



Mose Pooler—*Engineer*
Wyandotte, Oklahoma

Shirley Brady—*Business*
Miami, Oklahoma



Donna Anderson—*Business*
Grove, Oklahoma

Wylie Hawkins—*General*
Miami, Oklahoma

Mary Lois Roberts—*Education*
Miami, Oklahoma



J. W. Berkey—*Business*
Miami, Oklahoma

Virginia Myers—*Home Economics*
Commerce, Oklahoma

William Gray—*Engineer*
Grove, Oklahoma



Lois Shipley—*Education*
Miami, Oklahoma

Wilbur Cohrs—*Business*
Adair, Oklahoma



Truman Moss—*Pre-Law*
Afton, Oklahoma





Johnny McDonald—*Business*
Houston, Texas



Charles Pendergraff—*Engineer*
Miami, Oklahoma

Joann Cantrell—*Business*
Miami, Oklahoma



David Rowden—*Geology*
Okmulgee, Oklahoma

Barry Ham—*Social Science*
Henryetta, Oklahoma

Jerry Keyes—*Physical Education*
Maysville, Oklahoma



Frieda Denny—*Education*
Miami, Oklahoma

Milton Schulze—*Veterinary Med.*
Independence, Kansas

Lloyd Wilson—*Education*
Vinita, Oklahoma



Larry Boston—*Agriculture*
Pryor, Oklahoma

Pat Headlee—*Business*
Big Cabin, Oklahoma



Dale Myers—*Business*
Wolverton, Minnesota





Bert Connelly, *Industrial Education*
Miami, Oklahoma



Howard Kinder, *Physical Education*
Miami, Oklahoma



Jorge Izaguiree, *Civil Engineering*
Honduras



Robert Heibert, *Physics*
Anocasan, Missouri



Abolghassem Mirsadi, *Engineering*
Teheran, Iran



Floyd Chafin, *Industrial Education*
Miami, Oklahoma



Tony Dunn, *Agriculture*
Welch, Oklahoma



Donald Tipton, *Electrical Eng.*
Fairland, Oklahoma



Taghi Zolfaghari, *Agriculture*
Zanjan, Iran



John Miller, *Engineering*
Picher, Oklahoma

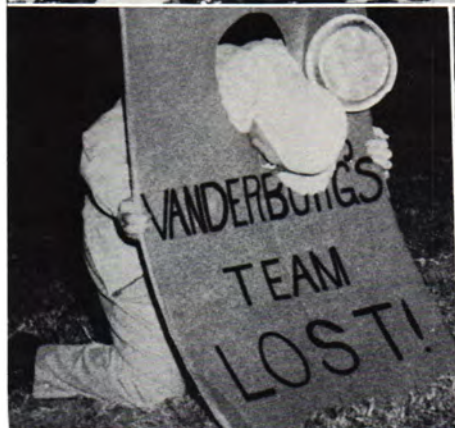


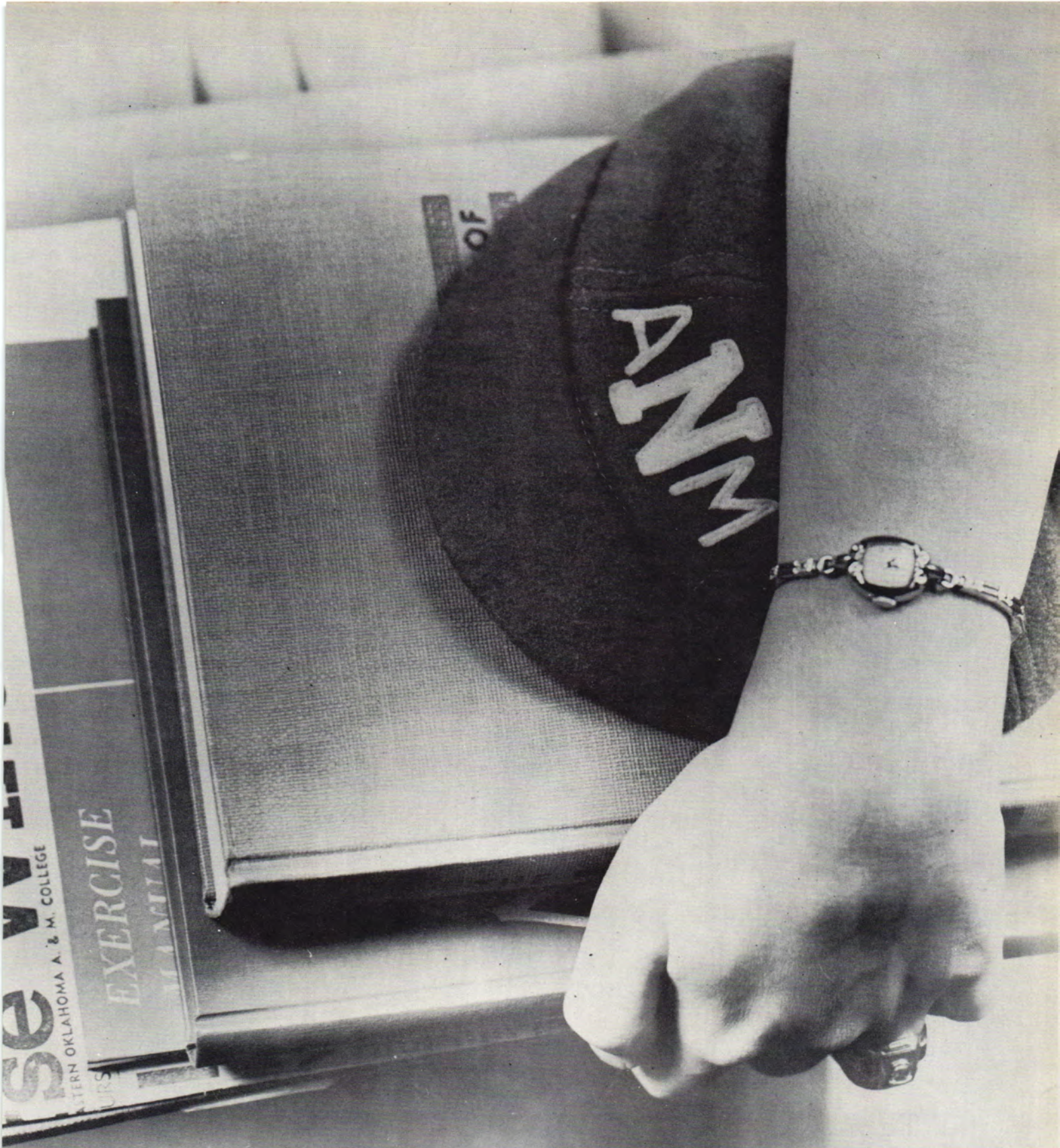
Dale Carter, *Industrial Education*
Berry, Missouri



Larry Garrison, *Engineering*
Adair, Oklahoma







FROSH

Joe Smart
Nowata, Oklahoma

Bob Maxwell
Miami, Oklahoma

Bob Martin
Miami, Oklahoma

Glen Linam
Drumright, Oklahoma

Jim Beach
Wyandotte, Oklahoma

Carol Giles
Miami, Oklahoma

Rex Ingram
Tahlequah, Oklahoma

Freda York
Seneca, Missouri

Leroy Smith
Hominy, Oklahoma

Marilee Cochran
Commerce, Oklahoma

Ronnie Mudd
Welch, Oklahoma

Jerry McFerron
Miami, Oklahoma

Mark Rendel
Miami, Oklahoma

John Cox
Bartlesville, Oklahoma

Ralph Offield
Carthage, Missouri

Jim Kennett
Skiatook, Oklahoma

Kenneth Commons
Baxter Springs, Kansas

Ronald Speir
Chelsea, Oklahoma

Porter Gray
Grove, Oklahoma

Jim Gaines
Miami, Oklahoma

Jim Bears
Catoosa, Oklahoma

Gene Roberts
Big Cabin, Oklahoma

Albert Sorenson
Choteau, Oklahoma

Jim Dungan
Picher, Oklahoma





Sue Perrish
Vinita, Oklahoma

Ray Judkins
Oklahoma City, Oklahoma

Richard Davis
Bartlesville, Oklahoma

George Hugley
Adair, Oklahoma



Tom Parker
Miami, Oklahoma

Beverly Cox
Picher, Oklahoma

Joe Garrison
Stillwell, Oklahoma

Gennis Geneva
Coweta, Oklahoma



Bill Routh
Shawnee, Oklahoma

Larry Garrison
Adair, Oklahoma

Pat Duncan
Picher, Oklahoma

Martha Dixon
Miami, Oklahoma



Doyle Stricklin
Adair, Oklahoma

Jim Gillispie
Grove, Oklahoma

Louise Henry
Pryor, Oklahoma

Carl Dorsey
Catoosa, Oklahoma



Jerry Carlton
Shawnee, Oklahoma

Ruth Armstrong
Fairland, Oklahoma

Lloyd Spangle
Vinita, Oklahoma

Gary Griffin
Vinita, Oklahoma



Verna Auxier
Durant, Oklahoma

Jim Ellis
Nowata, Oklahoma

J. E. Cox
Picher, Oklahoma

Yvonne Hobbs
Adair, Oklahoma

Calvin Martin
Spavinaw, Oklahoma

Charles Gray
Miami, Oklahoma

Harold Baughmayer
Vinita, Oklahoma

June Luginbuel
Vinita, Oklahoma

Philip Payne
Miami, Oklahoma

Beverly Hutchinson
Miami, Oklahoma

Roberta Bowles
Big Cabin, Oklahoma

Dorothea Hamm
Pryor, Oklahoma

Raymond Edwards
Miami, Oklahoma

Ronnie Coker
Miami, Oklahoma

Leo Tilloch
Keystone, Oklahoma

Peggy Baker
Commerce, Oklahoma

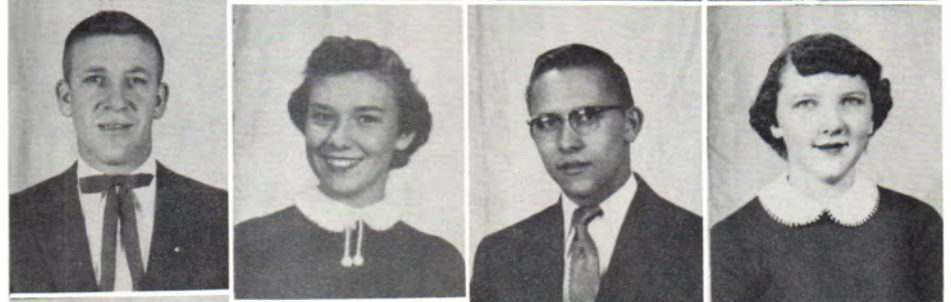




Pat Newburn
 Grove, Oklahoma
 Gordon Dixon
 Miami, Oklahoma
 Pat Peterson
 Miami, Oklahoma
 Issa Tavassoli
 Teheran, Iran



Jim Allison
 Leach, Oklahoma
 Darlene Mustain
 Miami, Oklahoma
 Sammy Lee
 Catoosa, Oklahoma
 Kathryn Nugent
 Vinita, Oklahoma



Barbara Hayes
 Salina, Oklahoma
 Harold Palm
 Miami, Oklahoma
 Maxine Shope
 Welch, Oklahoma
 N. B. East
 Picher, Oklahoma



Nathan Knott
 Locust Grove, Oklahoma
 Flossie Switzner
 Skiatook, Oklahoma
 Dwight Taylor
 Miami, Oklahoma
 Donna Seamon
 Miami, Oklahoma



Fern Van Hoose
 Baxter Springs, Kansas
 Jose Urdaneta
 Caracas, Venezuela
 Judy Garwood
 Miami, Oklahoma
 Ben Wallingford
 Chelsea, Oklahoma



Leroy Holman
 Locust Grove, Oklahoma
 Marjorie Young
 Carthage, Missouri
 Farrell Rossen
 Wagoner, Oklahoma
 Joyce Lennox
 Miami, Oklahoma





Norma Rice
Quapaw, Oklahoma
Kent Brim
Pryor, Oklahoma
Earldean Grigsby
Miami, Oklahoma
Bob Hatfield
Picher, Oklahoma



Sam Pierce
Miami, Oklahoma
Marlene Leffler
Picher, Oklahoma
Icie Endsley
Oologah, Oklahoma
Loy Covington
Tulsa, Oklahoma



Mary Ridgley
Bluejacket, Oklahoma
Ray Mustain
Afton, Oklahoma
Diana Gilbert
Hockerville, Oklahoma
Bill Barlow
Miami, Oklahoma



Jackie Wood
Commerce, Oklahoma
Karen Mulvaney
Quapaw, Oklahoma
Sherrill Green
Tulsa, Oklahoma
Margaret Carroll
Picher, Oklahoma



Ora Organ
Miami, Oklahoma
Dick Lingren
Chelsea, Oklahoma
Ann York
Chelsea, Oklahoma
Jerry Carrington
Miami, Oklahoma



Calvin Coil
Pryor, Oklahoma
Mary Ann Currey
Fairland, Oklahoma
Bob Haggard
Jay, Oklahoma
Ruth Ann Garrett
Miami, Oklahoma

Mike Pickett
Tucson, Arizona
Sue Kaylor
Miami, Oklahoma
Tom Ricks
Chelsea, Oklahoma
Glenda Pitts
Pryor, Oklahoma



Deanna Hedgpath
Tulsa, Oklahoma
Paul Anderson
Inola, Oklahoma
Jody Montgomery
Afton, Oklahoma
Leslie Allen
Seneca, Missouri



Ralph Adkison
Jenks, Oklahoma
Marilyn Dobbs
Welch, Oklahoma
Allyn Mathews
Southwest City, Missouri
Coleen Huggins
Afton, Oklahoma



Jeannine Hall
Commerce, Oklahoma
Amir Poursardar
Teheran, Iran
Mary Faye Cross
Adair, Oklahoma
Wayne Brewer
Miami, Oklahoma



Wahlela Wofford
Oaks, Oklahoma
Edwin Collins
Columbus, Kansas
Jeanie Miller
Picher, Oklahoma
Richard Davis
Bartlesville, Oklahoma



Ali Akhavan
Teheran, Iran
Wynoka Middleton
Miami, Oklahoma
Fonda Cudney
Columbus, Kansas
Sue Parrish
Vinita, Oklahoma

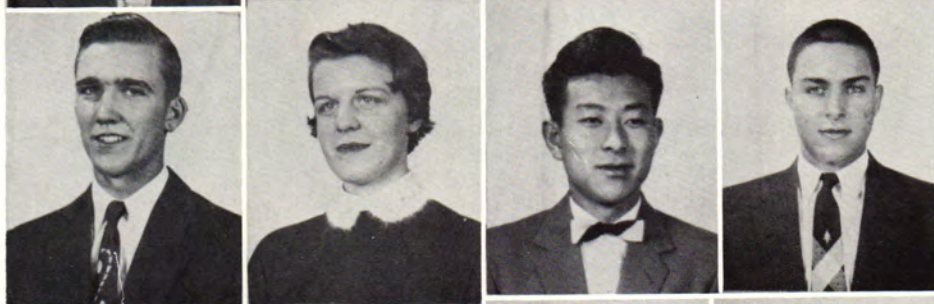




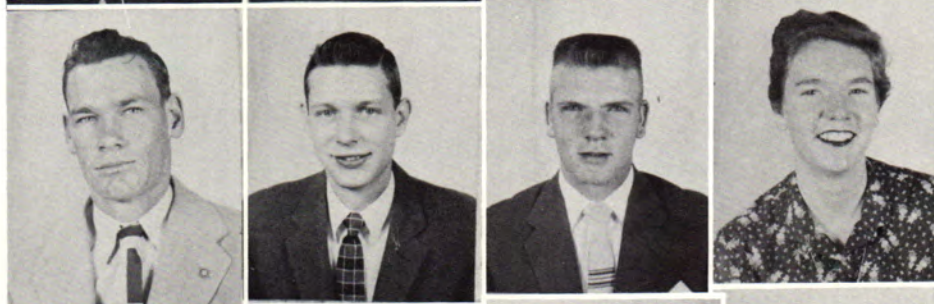
Hugo Johnson
Wyandotte, Oklahoma
Pat Trout
Pryor, Oklahoma
David Sutton
Miami, Oklahoma
Gary Lair
Commerce, Oklahoma



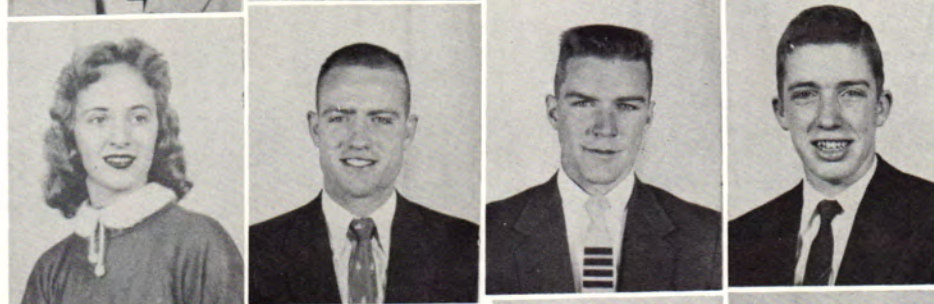
Cecil Harrison
Commerce, Oklahoma
Sandra Staton
Miami, Oklahoma
Tommy Myers
Fairland, Oklahoma
Shirley Jordan
Chelsea, Oklahoma



Jimmy Johnson
Miami, Oklahoma
Donna Bohannon
Afton, Oklahoma
Ki Ho Ryu
Seoul, Korea
Mack Worl
Barnsdall, Oklahoma



Jim Lasley
Pryor, Oklahoma
Don Barnes
Miami, Oklahoma
Jess Page
Wagoner, Oklahoma
Ruth Fogleman
Picher, Oklahoma



Sherlyne Marshall
Vinita, Oklahoma
Carl Reedy
Treece, Kansas
Richard Linihan
Tulsa, Oklahoma
Cecil Hoyt
Neosho, Missouri



James Budd
Norman, Oklahoma
Charles Goad
Commerce, Oklahoma
Rita Davis
Miami, Oklahoma
Billie Reed
Delaware, Oklahoma

Suzie Moody
Miami, Oklahoma
Bob Epperson
Bartlesville, Oklahoma
Wanda Pollan
Miami, Oklahoma
Terry Swift
Miami, Oklahoma



Richard Javine
Tulsa, Oklahoma
Helen Stone
Fairland, Oklahoma
Jhong Sam Lee
Seoul, Korea
Patty Mallett
Picher, Oklahoma



Mary Ann Weir
Miami, Oklahoma
Sam Muskrat
Jay, Oklahoma
Jaye Duncan
Spavinaw, Oklahoma
Ray Dawson
Vinita, Oklahoma



Bill Rush
Nowata, Oklahoma
Phyliss Bean
Vinita, Oklahoma
Bobby Detherage
Grove, Oklahoma
Carolyn Leslie
Langley, Oklahoma

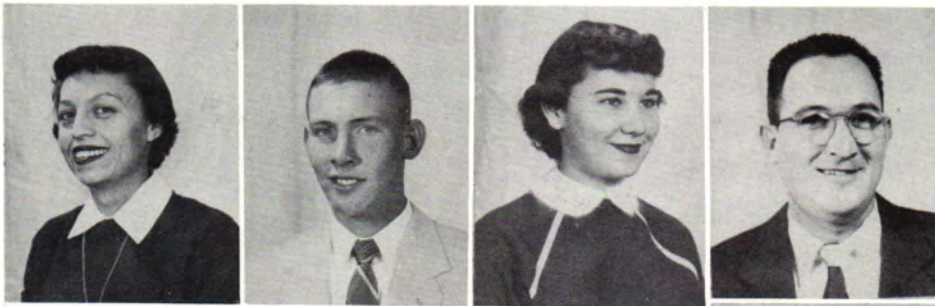


Marie Wheeler
Vinita, Oklahoma
Harold Graham
Tulsa, Oklahoma
Dorothy Clark
Miami, Oklahoma
Roger Hebard
Bartlesville, Oklahoma



Donald Woffard
Oologah, Oklahoma
Joyce Lennox
Miami, Oklahoma
Mansour Ahmadi
Teheran, Iran
Carol Cass
Welch, Oklahoma





Roberta Dick
Vinita, Oklahoma
John Budiselic
Baxter Springs, Kansas
Shirley Henderson
Miami, Oklahoma
Gerald Moudy
Commerce, Oklahoma



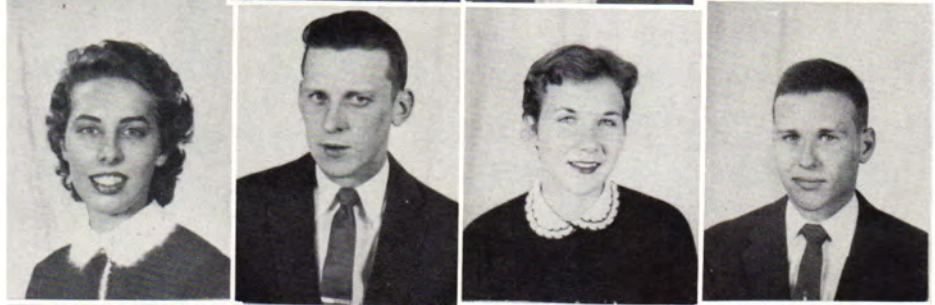
Harold Fogleman
Locust Grove, Oklahoma
Norma Beth Chambers
Miami, Oklahoma
Charles Newman
Miami, Oklahoma
Mavis Osburn
Commerce, Oklahoma



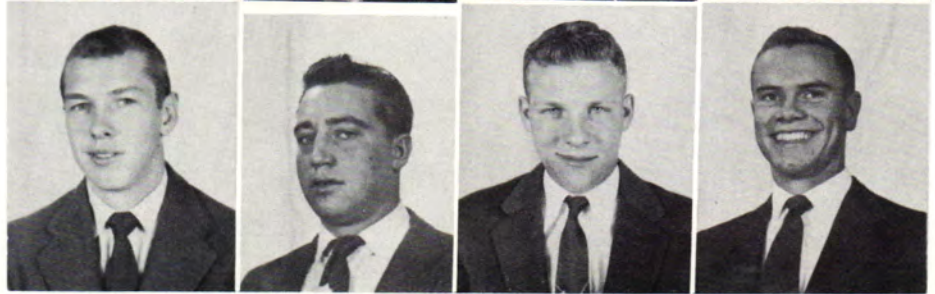
Verba Allen
Seneca, Missouri
Carl Jennings
Big Cabin, Oklahoma
Beverly Oskinson
Vinita, Oklahoma
Ronald Bogue
Miami, Oklahoma



Price Hutts
Vinita, Oklahoma
Diane Bohannon
Afton, Oklahoma
Raymond Maggard
Nowata, Oklahoma
Marjorie Gilbert
Miami, Oklahoma



Darlene Fanning
Afton, Oklahoma
Thomas Pearse
Miami, Oklahoma
Joyce Gardner
Tulsa, Oklahoma
Arlen Elliott
Johnson, Kansas



Ike Smart
Nowata, Oklahoma
Ted Eakes
Broken Arrow, Oklahoma
Kent Russell
Bucyrus, Kansas
Claude Donica
Miami, Oklahoma

Lorrayne Marshall
Vinita, Oklahoma
Eugene Wyrick
Wyandotte, Oklahoma
Mary Julien
Red Fork, Oklahoma
Frank Nieberding
Miami, Oklahoma



Don McPheeters
Busheyhead, Oklahoma
Chloe Ann Robbins
Quapaw, Oklahoma
Charles Nicholson
Checotah, Oklahoma
Elaine Cobb
Picher, Oklahoma



Roxanna Harrison
Grove, Oklahoma
Jerry Ross
Broken Arrow, Oklahoma
Mary Lou Fields
Jay, Oklahoma
Arlan Ridgley
Bluejacket, Oklahoma



Doug Wagoner
Tulsa, Oklahoma
Roberta Crouch
Vinita, Oklahoma
Joe Burgin
Riverton, Kansas
Shirley Potts
Commerce, Oklahoma



Virginia Maples
Miami, Oklahoma
Jim Lambert
Oologah, Oklahoma
Charles Webb
Adair, Oklahoma
Bill Simms
Vinita, Oklahoma



David Murrie
Tulsa, Oklahoma
R. T. Dixon
Miami, Oklahoma
Don Wilson
Chelsea, Oklahoma
Sam Pierce
Miami, Oklahoma





Helen Starr
Stilwell, Oklahoma
Kent Snodgrass
Nowata, Oklahoma
Shirley Jones
Claremore, Oklahoma
J. R. Bond
Drumright, Oklahoma



Marvin Wilson
Nowata, Oklahoma
Mildred Guinn
Miami, Oklahoma
Richard Couch
Choteau, Oklahoma
Kenneth Forrest
Locust Grove, Oklahoma



Edward DuBoise
Grove, Oklahoma
Don Judd
Chelsea, Oklahoma
Tom Jackson
Fairland, Oklahoma
Loren Mulvaney
Quapaw, Oklahoma



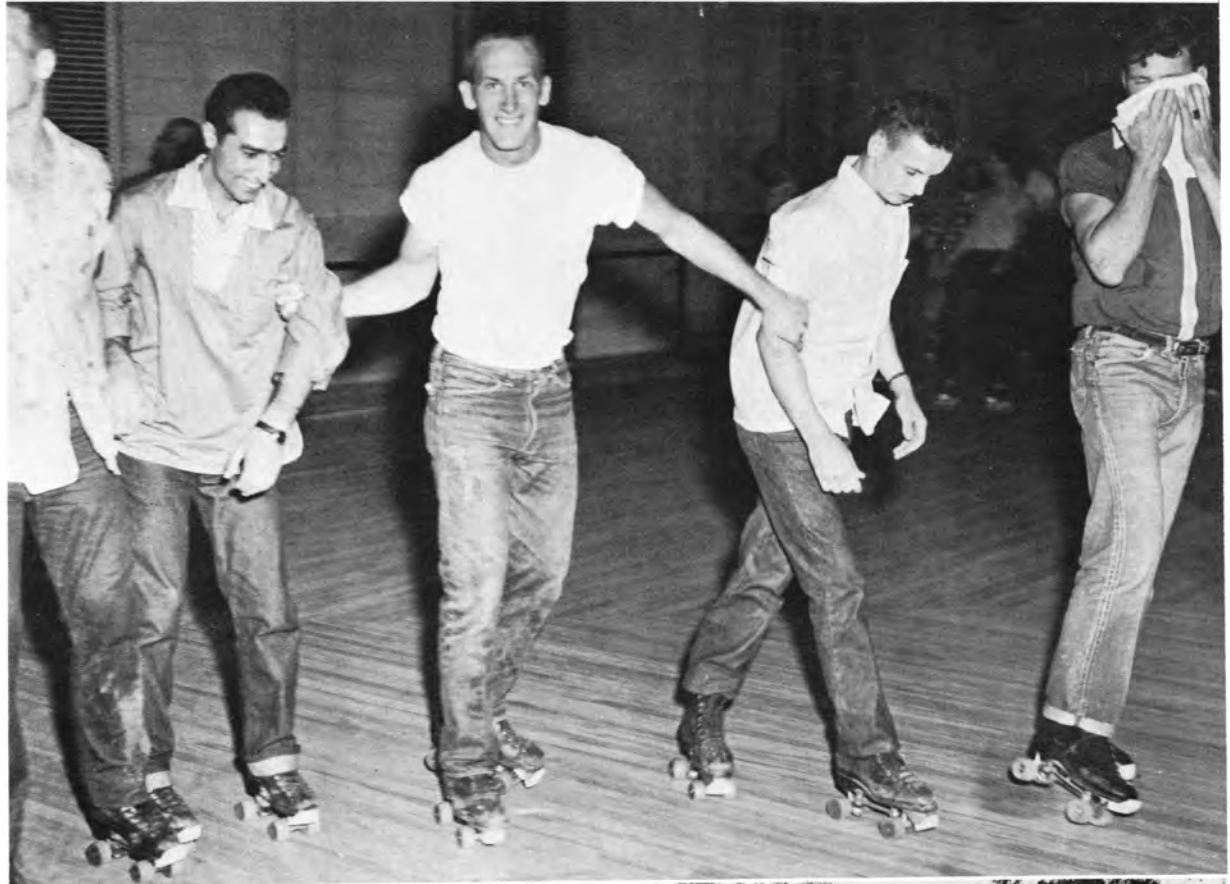
James Furnas
Commerce, Oklahoma
Tom Donelson
Commerce, Oklahoma
John Mehlis
Sapulpa, Oklahoma
Bill Moss
Afton, Oklahoma



Norman Umphenour
Riverton, Kansas
Lester Hibbs
Maize, Oklahoma
Donald Root
Quapaw, Oklahoma
Roger Hebard
Bartlesville, Oklahoma



Jo Nell Chamberlain
Siloam Springs, Arkansas
Leroy Windham
Baxter Springs, Kansas
Jo Ann Haslett
Miami, Oklahoma
Dan Brown
Pryor, Oklahoma





ROYALTY



**VIKING QUEEN
PRESS CLUB QUEEN**
Miss Freda York

Miss York was selected Viking Queen by the Honorable Jess Fronterhouse, State Senator from Oklahoma.



SOPHOMORE CLASS
QUEEN
Miss Diann Williams





FRESHMAN CLASS QUEEN

Miss Sandra Staton



**HOMECOMING QUEEN
BUSINESS and
INDUSTRIAL CLUB QUEEN**

Miss Jo Anne Cantrell



AFROTC QUEEN
Miss Norma Sue Davis



ENGINEER QUEEN

Miss Ann Cowan



AGGIE QUEEN
Miss Roberta Crouch



VETERAN QUEEN
Mrs. Roseann Masters



BASKETBALL QUEEN

Miss Mary Lou Fields

**S
P
O
R
T
S**





The Golden Norsemen

First row, left to right: Paul Hulette, Bob Baker, Don Palmer, Tom Ricks, Bill Rush, Jim Ellis. *Second row:* Dewey Lynch, Farrell Rosson, Robert Shewbart, Coach Robertson, Carol Ed Giles, Bob Martin, Neil Wells. *Third row:* Harold Harvey, Frank Smith, Ray Judkins, Eugene Wyrick, Robert Maxwell, Gene Judkins, Clinton Greenhall, Jesse Page. *Fourth row:* Richard Bradshaw, Gary Griffin, Jerry Carlton, Everett Barnes, Arthur Goad, Frank Hicks, Ted Eakes, Warren Berry, Wylie Hawkins. *Fifth row:* John Kapps, John Morris, Edward Miller, Don King, Jerry Haynes, Ralph Berg, Clyde Van Sickle, Charlie O'Donnell. *Sixth row:* Bill Routh, Bill McClean, J. C. Duensing, Charles Nicholson, Reggie Neese, Bob Hunter, N. L. Smith, Jim Lasley, Jerry Keys.

Norseman coaches, from the left: Neill Wells, line coach; "Red" Robertson, head coach; and Dewey Lynch, backfield coach.



1955 SCHEDULE

NEO.....31.....	Bacone	0
NEO.....34.....	S.W. Mo. Teacher's "B"	0
NEO.....20.....	Eastern	0
NEO.....7.....	Cameron	19
NEO.....31.....	Murray	0
NEO.....34.....	O.M.A.	0
NEO.....0.....	Northern	26
NEO.....28.....	Connors	6
NEO.....20.....	Tyler	20
NEO.....17.....	Graceland	7



Gary Griffin



Tommy Ricks



Jim Lasley



Ralph Berg



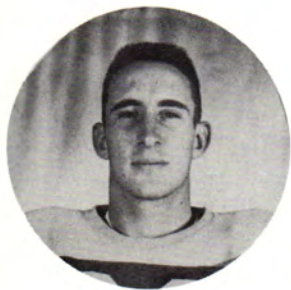
Clyde Van Sickle



Paul Hulette



Robert Shewbart



Bill Rush



Johnny McDonald





Harold Harvey



Wylie Hawkins



Jesse Paige



Arthur Goad



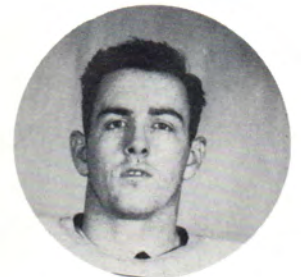
Richard Bradshaw



Bob Martin



Ted Eakes



Ed Miller



Jerry Carlton



Jerry Haynes



Charlie O'Donnell



Jim Ellis



Carol Ed Giles



Jerry Keys



Bob Maxwell



Bill Routh



Warren Berry



Ray Jenkins

N.E.O. Basketball Stars



"Bob"



"Chick"



"Satch"



"Bob"



"Ewo"



"Charlie"



"Rossen"



"Jerry"



"Tab"



"Parkee"



"Dale"



"Lucky"



"Johnny"



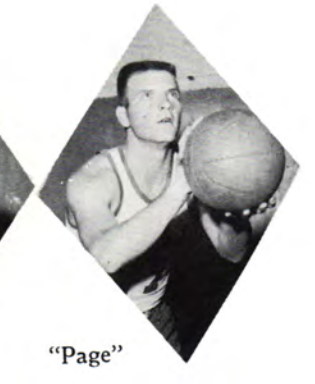
"Wardon"



"Donnie"



"Lasley"



"Page"

Varsity Boys Basketball at N.E.O.



Front row, left to right: Johnny McDonald, Charles Nicholson, Warren Berry, Bob Hunter, Satch Hawkins, Don Wofford, Dale Meyer, Farrell Rosson. Back Row: Bob Maxwell, Jesse Page, Bob Harris, Tom Parker, Jerry Carlton, Don Ward, Carol Ed Giles, Coach Robertson.

Varsity Girls Basketball at N.E.O.



Front row, left to right: Sylvia Pacham, Shirley Jones, Mary Lou Fields, Carol Cass, Viola Atchley, Helen Starr. Back row: Beverly Oskison, Marilyn Dobbs, Hester Grimes, Darlene Fanning, Coach Rucker.



Mary



Mary Lou



Shirley



Viola



Marilyn



Beverly



Carol



Sylvia



Helen



Hester



Darlene



First row: Jim Hillenberg, Duane Crabaugh, Larry Shuck, Lloyd Johnson, Roy Holmes, Melvin Rakes. Second row: Don Doreing, Lyle Becknell, Bob Hunter, Arthur Goad, Warren Berry. Back row: Bill Smith, Glen Bostic, Satch Hawkins, Bob Maples, Charles Lee, James Barret, Coach Thomas.

N.E.O. Baseball 1955 Season





VARSITY TENNIS TEAM

Ray Johnson
Bob Maxwell
John P. ...
George

GOLDEN GLOVE CHAMPS



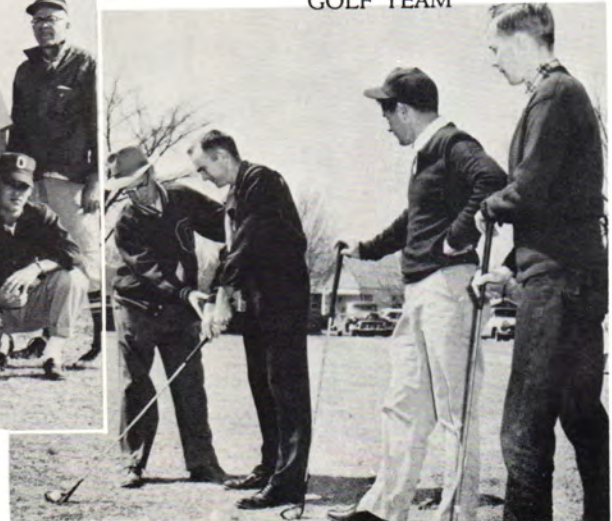
VARSITY TRACK TEAM

BASEBALL SQUAD - 1956



Ray Johnson
Bob Maxwell

GOLF TEAM



Aggie Intramural Team



Front row: Charles Gideon, Pete Lingren, Harold Fogleman, Tod Wofford. *Back row:* J. C. Miller, Guy Morrison, Leroy Holman, Jack Williams.

Dorm Team



Front row: Leo Tillock, Ronnie Haney, Ronnie Bowen. *Back row:* Raymond Colclasure, Carl Jennings, James Shreeves, Billie Reed.

Apartment Intramural Team



Front row: Jerry Keys, Tom Ricks, Gary Griffin, Ray Judkins, Harold Harvey. Back row: Bill Routh, Jerry Haynes, Joe Pottorff, Charlie O'Donnell, John Morris.

AFROTC Team



Front row: Doug Wagner, James Dungan, Arthur Goad, Bill Rush, Mac Mathews. Back row: Bill Whately, Carl Reedy, David Murrie, Mac Worl.

ORGANIZATIONS



Student Council Officers - Fall 1955



Clyde Van Sickle, President, Bill Christenson, Vice-President, Ann Cowan, Secretary, Diann Williams, Cheer Leader, Karen Hughes, Treasurer.

Student Council Officers - Spring 1956



Bob Trickey, President, Bob Maples, Vice-President, Jo Anne Cantrell, Treasurer, Mary Nell Bowman, Secretary.

Phi Theta Kappa



Left to right: Cyrus Lackpour, Don Cravens, Mose Pooler, Elsie Hunt, Dan McRae, Ann Cowan, Truman Moss, Mary Lois Roberts, Clyde Van Sickle, Nickie Brown, Larry Boston, Paul Falls, Miss Vann, Sponsor.

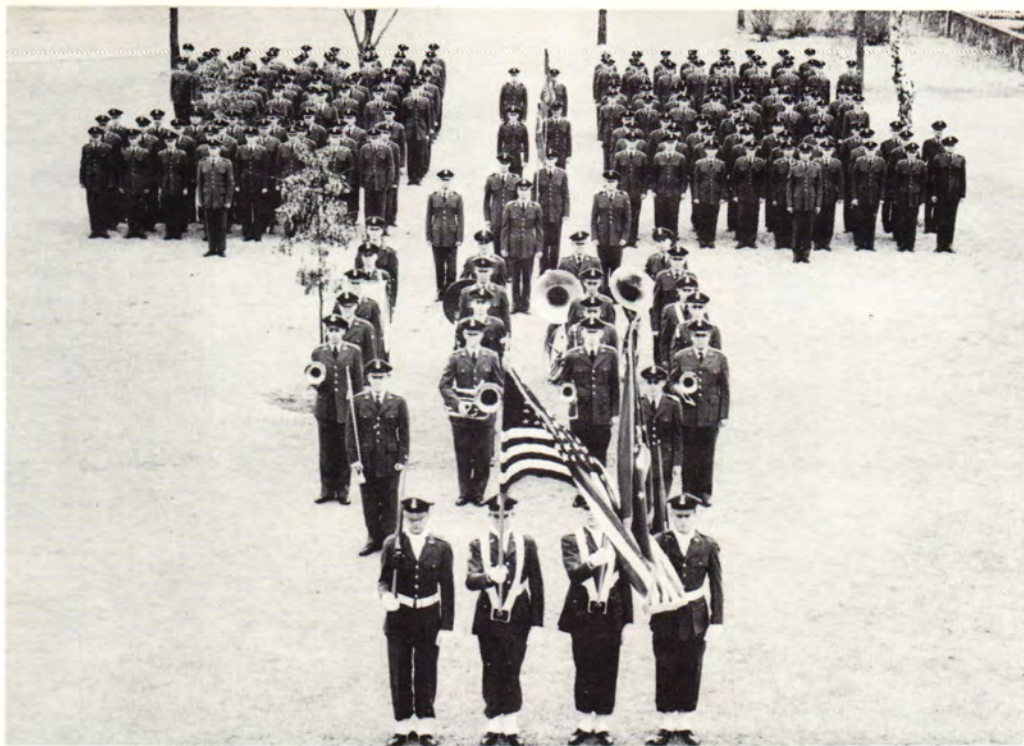
Phi Theta Kappa Pledge Ceremony



Refreshment for initiation



A
F
R
O
T
C



AFROTC Group

AFROTC



NEO A & M

Band

Drill Team





Flight 1, Squadron A



Flight 2, Squadron A



Flight 1, Squadron B



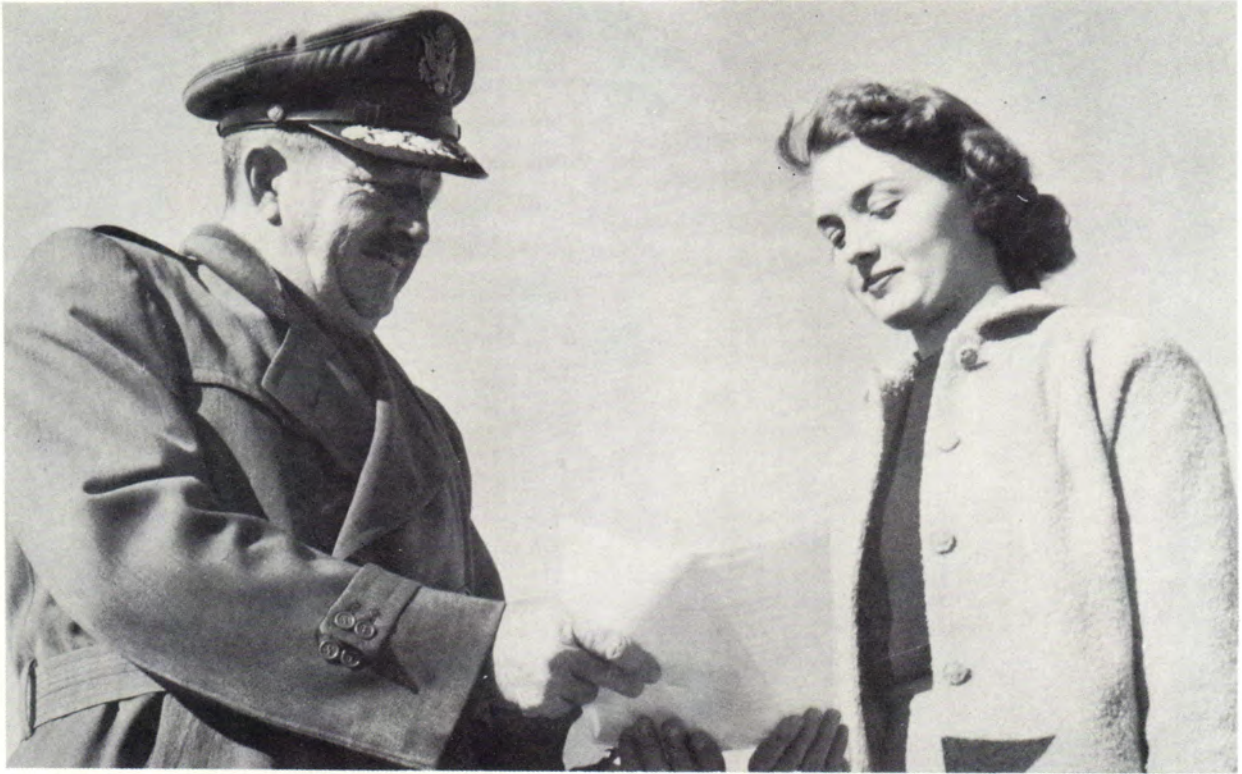
Flight 2, Squadron B



Flight 1, Squadron C



Flight 2, Squadron C



Brigadier General Maurice G. Marr, Commander 137th Fighter Wing, Oklahoma ANG, Will Rogers Field, Oklahoma City, presents Miss Norma Sue Davis her commission as Honorary Cadet Colonel.

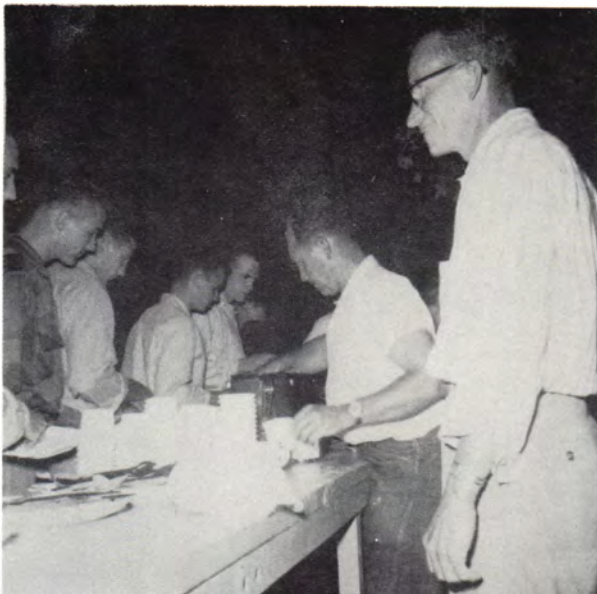
Now the day is over—





Front row—Mose Pooler, John Miller, Don Cravens, Robert Hiebart, Mr. Need—Sponsor, Clyde Van Sickle, John Thiesing—Sponsor (not pictured). *Second row*—Reyard Hijazi, Teddy Williams, David Reedy, Edward DuBois, James Duncan, Ed Miller, Everette Barnes. *Third row*—Sattar M. Hadithy, Jim Kennett, Willis Johnson, John Mehliis, James Budd, Sherrill Green, Jorge Izaguiiree. *Fourth row*—Charles Pendergraft, Rod Griffin, Othel Deason, Gordon Dixon, John Mach, Richard Javine, Charles Griffith. *Fifth row*—Jamal Azizi, Viola Atchley, Fern Van Hoose, Abdul Alagahry, Bob Heitzman, Henry Collins, Moji Mehrooz. *Sixth row*—Hasham Gharaibeh, Ben Wallingford, Marvin Wilson, Frank Byard, Johnny Livingston, Cyrus Lackpour.

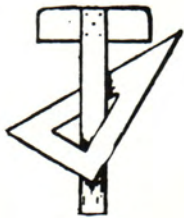
Engineers Club



Engineer Activities



ENGINEER OFFICERS—*Left to right*—Oren Need, Sponsor; Frank Byard, student council representative; Don Cravens, secretary; Mose Pooler, president; Robert Hiebert, treasurer; John Theising, sponsor.



ENGINEERS' ACTIVITIES

<i>Occasion</i>	<i>Place</i>	<i>Date</i>
Field Trip	West Side Mine (Treece)	
Field Trip	Eagle-Picher Mill	
Field Trip	Jayhawk Chemical Plant (Riverton)	
Field Trip	B. F. Goodrich	
Field Trip	G. R. D. A.	
Field Trip	Coffeyville Chemical Plant	
Field Trip	Vickers (Joplin) & Root Manufacturing (Baxter)	
Field Trip	Eagle-Picher Smelting & Empire Dist. Elect (Galena)	
Field Trip	Either K.U., O.U. or O. A.&M.	
Chicken Fry	Ben Stanley's Cabin	Sept. 30, 1955
Dance	College Gymnasium	March 17, 1956
Picnic	Grand Lake	May 12, 1956
Election of Officers		Feb. 2, 1956
Engineers' Day		March 16, 1956





First row, left to right: Don Ward, Melvin Rakes, Milard Haynes, Leon Fansler, Larry Boston, Max Kendricks, David Harrison, Nathan Knott, Tommie Carroll, Phil Carroll. Second row: Bobby Detherage, Jim Ellis, Calvin Hogan, Taghi Zolfaghari, Ike Smart, Bill Christenson, Roberta Crouch, Kent Russell, Leroy Holman, Jim Allison, Carl Hale, Leroy Fogleman. Third row: J. C. Miller, Sponsor, Gene Judkins, Tony Dunn, Bill Jarvis, George Myers, Arlan Ridgley, Jim Lasley, Tomas Pearce, Jim Bob Rucker, Albert Sorenson, Carl Dorsey, Gerald Grimes, Bob Trickey, Harry Synar, Sponsor. Fourth row: Issa Tavasoli, Amir Ahmadi, Mohamad Afkhami, Ronnie Farrington, Sammie Pierce, Dickie Poplin, Ralph Offil, Jim Shreeves, Lester Hibbs, Bobby Ratcliff, Jim Crather, Joe Burgin, Richard Couch.

Aggie Society

AGGIE OFFICERS—Richard Couch, Bob Trickey, Bill Christenson, Calvin Hogan.



Aggies



High Individual Judges at Fort Worth

Livestock Judging Team



Crops Judging Team

Aggie Engineering



Aggie Day

Aggie Trophies

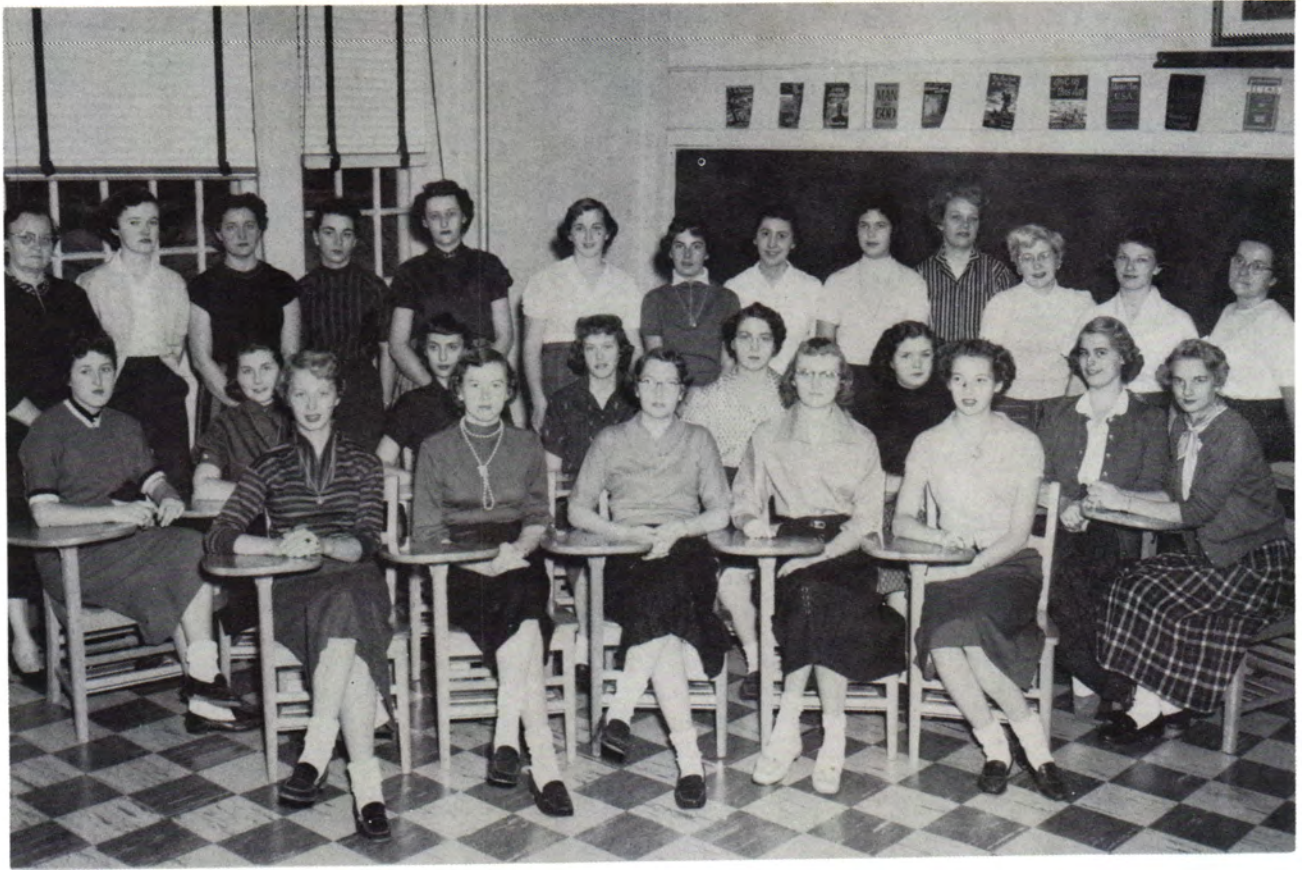


Aggie Day 4-H Winners

Aggie Day Dairy Judging







FIRST ROW—*Left to right*—Faye Sloan, Louise Henry, Glenda Pitts, Roxanna Harrison, Virginia Maples. *Middle row*—Shirley Brady, Phyllis Bean, Frieda Denny, Dottie Seward, Yvonne Hobbs, Jo Nell Chamberlin, Dorothy Kaylor, Carolyn Ulm. *Back row*—Mabel Speaker, Verba Allen, Marie Payton, Carol Jean Whitson, Helen Johnston, Wanda Pollan, Sharon Witzansky, Mary Lois Roberts, Jo Ann Cantrell, DeMaris Organ, Virginia Myers, Joyce Lennox, Barbara Hayes.

OFFICERS—*Left to right*—Sharon Witzansky, Joyce Lennox, Mabel Speaker—Sponsor, Jo Ann Cantrell, Mary Lois Roberts, Faye Sloan.

A
g
g
i
e
t
t
e
s



C
l
u
b

Baptist Student Union



"Daily Devotion"

The BSU is an organization composed of Baptist students attending NEO. Each day at 12:30 this group meets for a devotion. The purpose of this organization is to develop fellowship and to further Christian attitude on the campus.





First row: Crabaugh, Combs, Haney, Williams, Bradshaw, Martin, Lacky. *Second row:* Davis, Cochran, Scott, Roberts, Witzansky, Hall, Staton, Williams, Anderson, Newburn, Garwood, Ridgley, Heuett. *Third row:* Shuck, Duensing, Brady, Haslet, Sloan, Hedgepath, Jones, Cantrell, Berkey, Combs, Chetham, Follis, Hawkins. *Fourth row:* Goad, Maples, Tomey, Messemore, Harris, Pendergraft, Roberts, Jennings, Waddle.

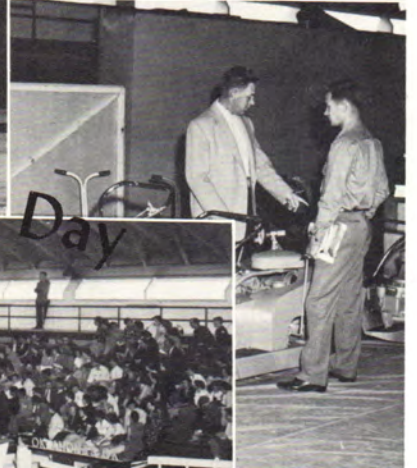
Business & Industrial Club



Homecoming Committee

OFFICERS—l to r—Diann Williams, Treasurer, Bob Maples, Vice President, J. W. Berky, President, Donna Anderson, Secretary.





Business & Industrial Day
March 1, 1956





"The Drunkard"

D
r
a
m
a
t
i
c

C
l
u
b

'55
'56



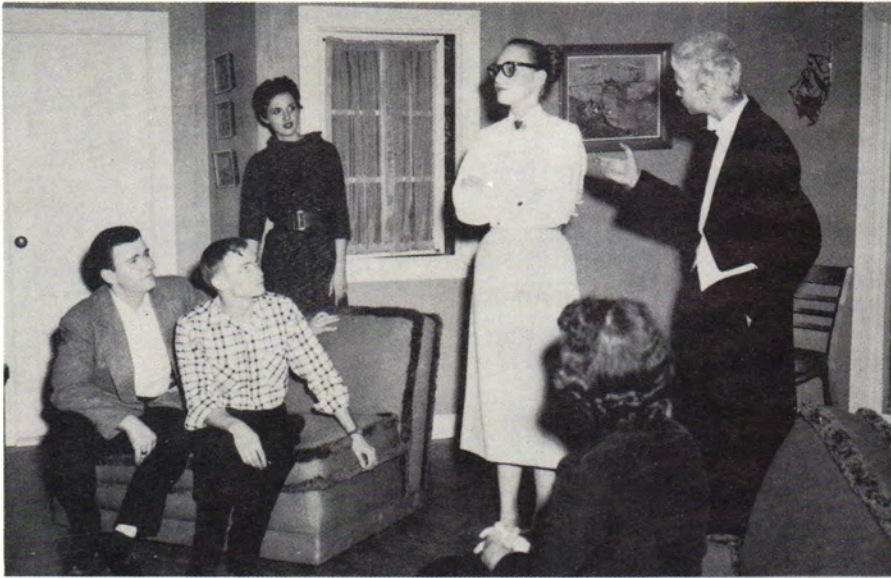
Faculet or "What Is It?"



The parting of the ways

Cast of Spring Production
"CAROUSEL"





Dramatics Club

presents

... Internal Confusion



"Father of the Bride"

After the Play



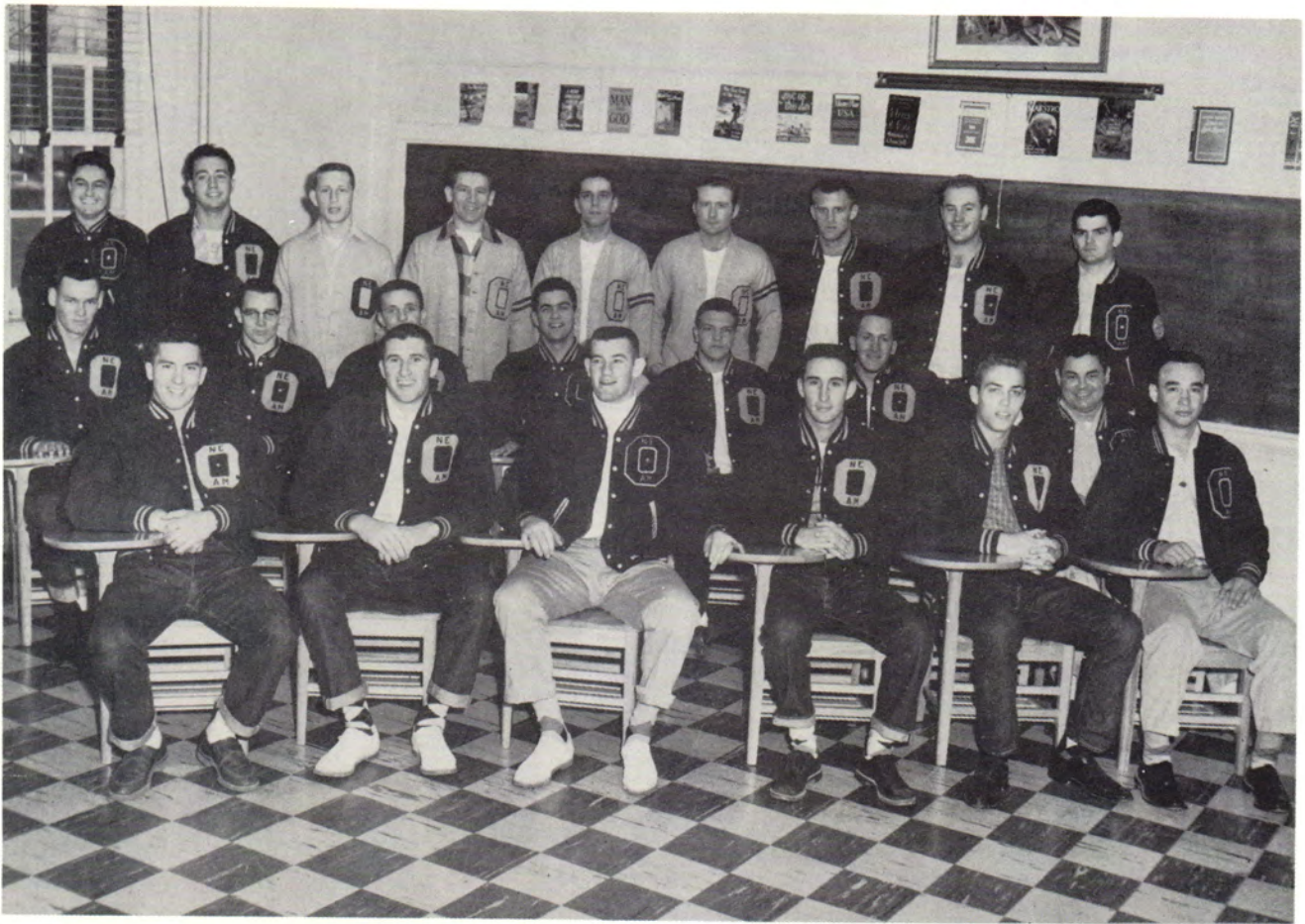
Future Teachers of America



OFFICERS, Frieda Denny, Joanna Martin, Sherman Hanes, Mary Nell Bowman, (Back row) Nicolette Brown, Dan McRae, Billie Jean Harrison.

First row: Virginia Watt, Beulah Beard, Sherman Hanes, Carol Cass, Frieda Denny. Second row: N. B. East, Nicolette Brown, Joanna Martin, Mary Nell Bowman, Joyce Lennox. Third row: Dan McRae, Billie Jean Harrison, Pat Peterson, Jackie Rucker, Sponsor.



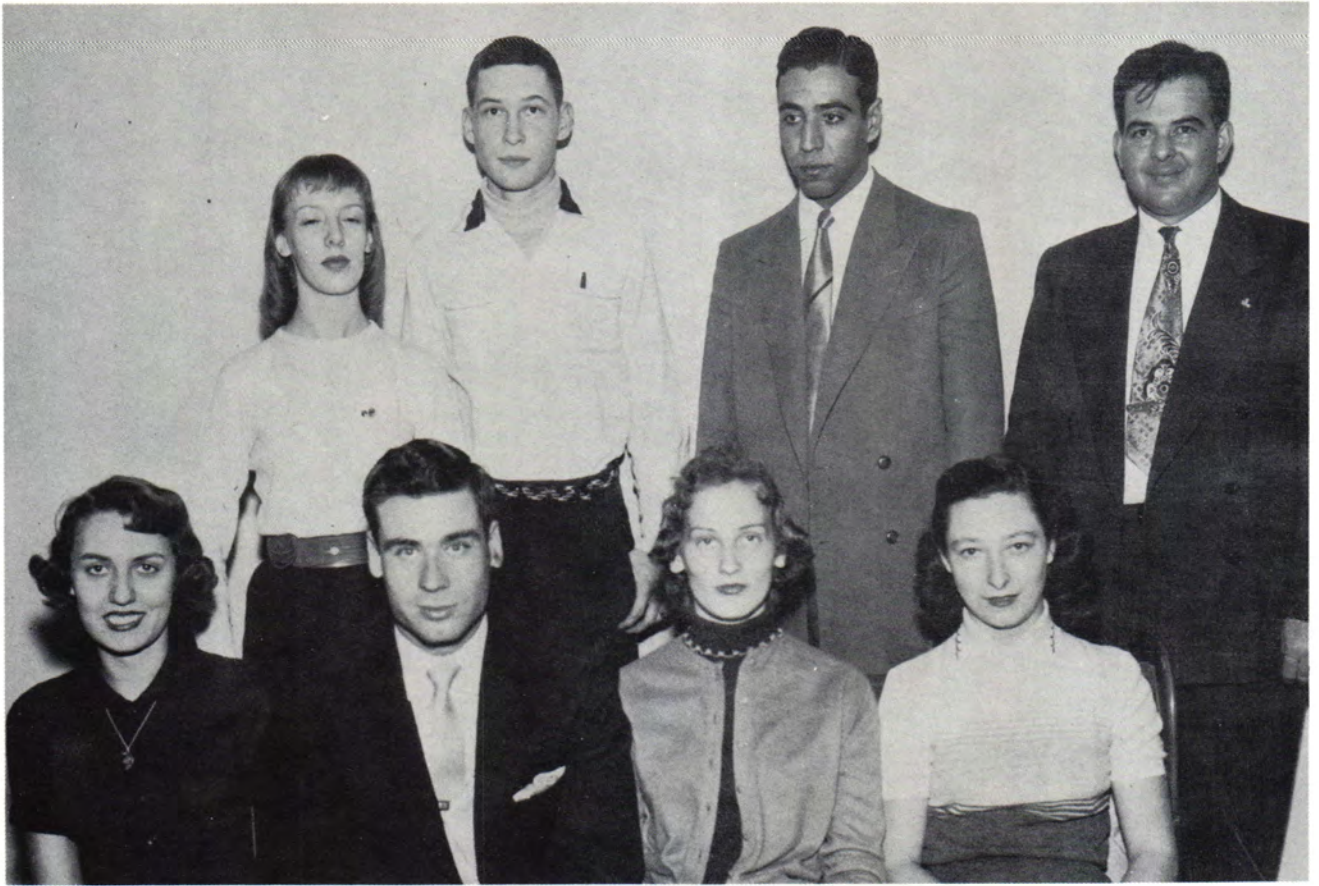


First row: left to right—J. C. Duensing, Bob Harris, Harold Harvey, Bill Rush, Jerry Carlton, Arthur Goad. Second row: Jim Laslie, Tommy Ricks, Bob Maxwell, Bob Maples, Bob Martin, Richard Bradshaw, Frank Shuck. Third row: Larry Shuck, Ted Eakes, Wylie Hawkins, Warren Berry, Bob Hunter, Clyde Van Sickle, Jerry Keys, Ralph Berg, and Ted Williams.

"O" Club



OFFICERS—Arthur Goad, President; Wylie Hawkins, Vice-President; Larry Shuck, Secretary-Treasurer, Frank Shuck, Representative for student council.



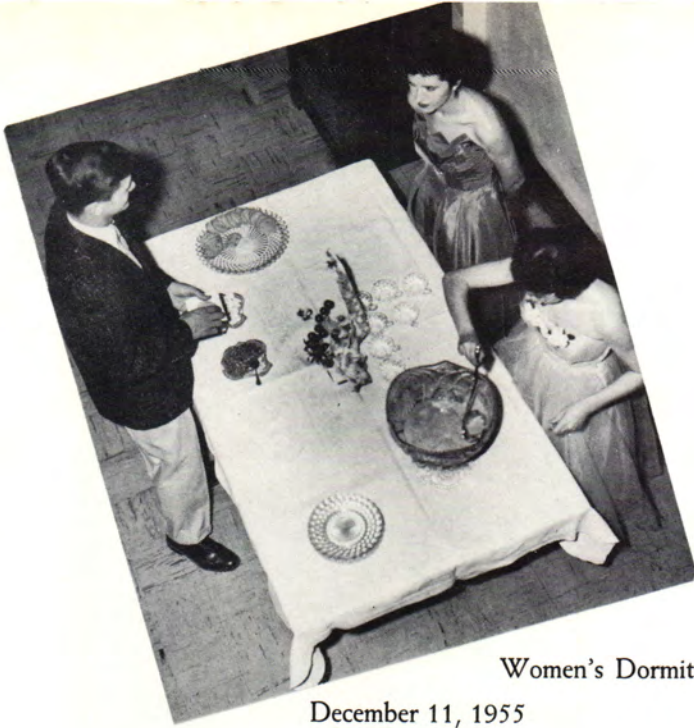
International Relations Club

Front row: l to r—Frieda Denny, Sherman Hanes, Beulah Beard, Joanna Martin. *Back row:* Nicolette Brown, Dan McRae, Hashem Gharaibeh, E. J. Grieshaber, sponsor.



Veterans Club Officers

From l to r: J. R. Bond, Mose Pooler, Barry Ham, Duane Crabaugh.



Women's Dormitories Open House

December 11, 1955

2:00 p.m.—6:00 p.m.

Commons Hall

White Hall

G
i
r
'
s

Girls of White Hall



D
o
r
m
s

Girls of Commons Hall

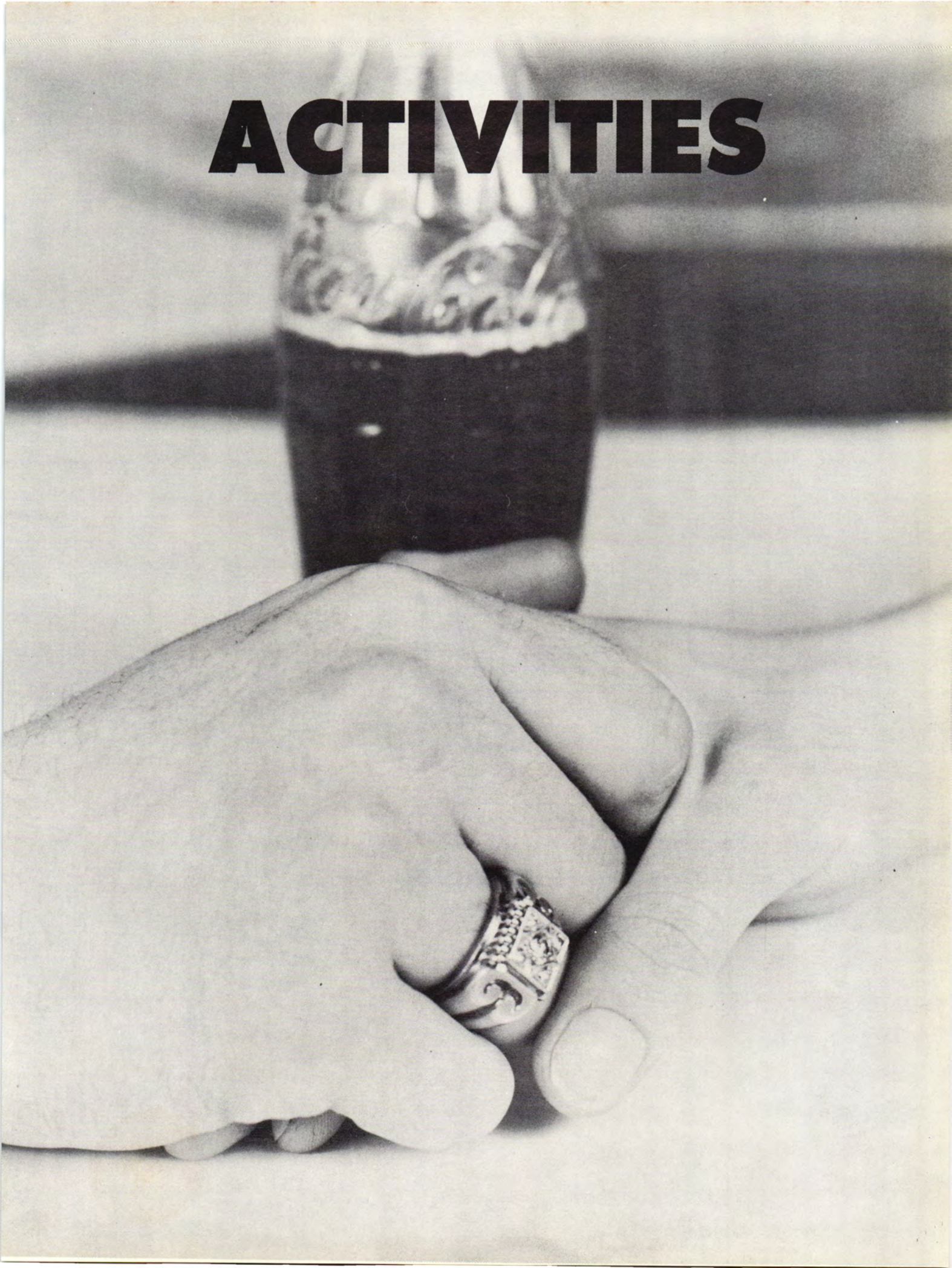


Boys Dorm



Dorm officers with Mr. and Mrs. Don Dyer.

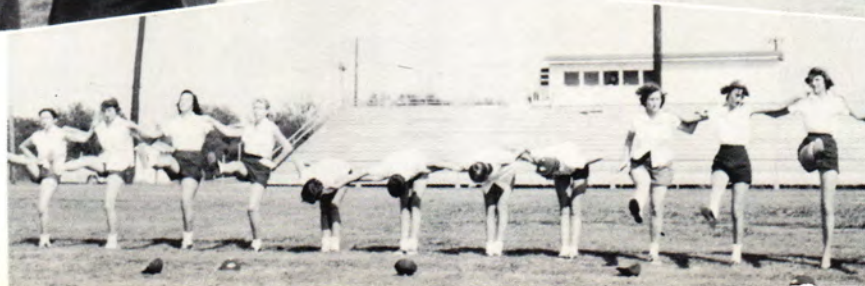
ACTIVITIES





Norse Stars

On The Field



Art Department





N.E.O. Mixed Chorus



ent \$.50

Adults \$

GIRL CRAZY

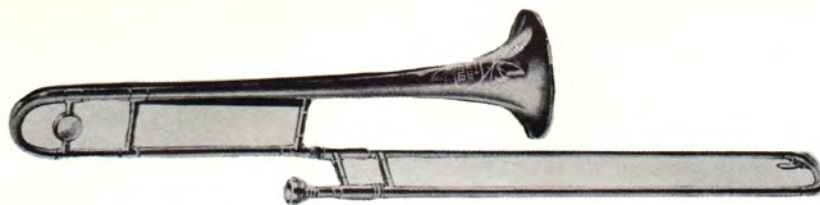
college auditorium
Monday, April 25
8:00 P.M.



Kampus Kards



GIRL CRAZY
 college auditorium
Tuesday, April 26
8:00 P.M.



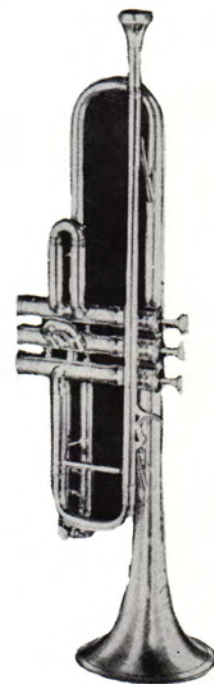
N.E.O. A&M. Band



*First row, left to right: Falls, Hughes, York, Windham, Brown, Harrell, Lair, Garrett.
Second row: Galleger, Hemphill, Sorenson, Crouch, Lingren, Hanes, Duensing, Dixon.
Third row: Garrison, Simms, Jordon, Gideon, Linam, Director Swanson.*



At Wilburton Before the Game.



he 'Wind'
Friend

The Norse Wind

STUDENT PUBLICATION OF NORTHEASTERN OKLAHOMA A. & M. COLLEGE

MIAMI, OKLAHOMA, THURSDAY, SEPT 22, 1955

Sup
Foot

TWELVE



Roseann Masters
First Semester Editor



Ray Vanderburg
Sponsor



Howard Kinder
Second Semester Editor



Ruth Ann Garrett
Society Editor
Second Semester



James R. Bond
Photographer and
Business Manager
First and Second Semester



Mary Lou Fields
Assistant Sports Editor
Second Semester



Verba Allen
OCPA Representative



Dwight Taylor
Sports Editor
First and Second Semester



Shirley Jordan
Associate Editor
Second Semester

The Norse Wind

Join The

Press Club

The Press Club fosters and promotes good journalism in all student publications and develops a program of activities for all those interested in journalism. The Club assists in all campus promotional activities such as publicity and other student initiated programs.



Back row, left to right: Ruth Ann Garrett, Shirley Jordon, Ray Vanderburg, sponsor, Karen Hughes. Front row: J. R. Bond, Dwight Taylor, Howard Kinder.



Back Row, left to right: Joe Garrison, Shirley Jordon, Mary Lou Fields, Ruth Ann Garrett, Ruth Armstrong. Second row: N. B. East, Mrs. Leona Penrod, Freda York, Karen Hughes, Terry Swift. First row: Leland Slinkard, Howard Kinder, Bob Maples, Harold Shaw, J. R. Bond.



J. R. Bond



Leslie Aton



Ruth Ann Garrett

1956 Annual Staff



Donna Anderson

I would like to make a special acknowledgment of the outstanding photography that has been done by J. R. Bond for the 1956 Viking. The help and co-operation of the staff at the time it was needed most has been the necessary element in editing this book.

LESLIE ANN ATON
Editor



Shirley Brady

Annual staff members not pictured are Tom Donelson, Diann Williams, Sharon Witzanski, and Roberta Bowles.



Shirley Jones



Joann Cantrell



Mary Lois Roberts



N.E.O.
Homecoming

November 19,
1955

Sadie Hawkins



Festivities





Freshman Initiation

Viking Patrons

Compliments of

PALMER'S MABON SHOP

Miami, Oklahoma

Compliments of

WILSON PHOTO LAB

Miami, Oklahoma



McDONALD PRESS

Miami, Oklahoma

WHEEL-IN DRIVE-IN

Miami, Oklahoma





DEE'S CAFE

Miami, Oklahoma

BEATRICE FOODS COMPANY

Miami, Oklahoma



LOUIS PRICE SONS

Miami, Oklahoma

BOB HILL GROCERY

Miami, Oklahoma





WILLIAM'S PACKING COMPANY

Miami, Oklahoma

THE CINDERELLA SHOP

Miami, Oklahoma



THE C. L. BURTRUM MOTOR COMPANY

Miami, Oklahoma

THE MIAMI FUNERAL HOME

Miami, Oklahoma





THE HUB CLOTHING COMPANY

Miami, Oklahoma

THE SECURITY BANK AND TRUST COMPANY

Miami, Oklahoma



DURHAM'S READY-TO-WEAR

Miami, Oklahoma

DAWSON JEWELRY

Miami, Oklahoma





HAMMON'S B&K MEN'S WEAR

Miami, Oklahoma

MILLNER-BERKEY

Miami, Oklahoma



DELZELL DRUG

Miami, Oklahoma

THE FIRST NATIONAL BANK

Miami, Oklahoma





WARDROBE CLEANERS

Miami, Oklahoma



THE J. C. PENNEY COMPANY

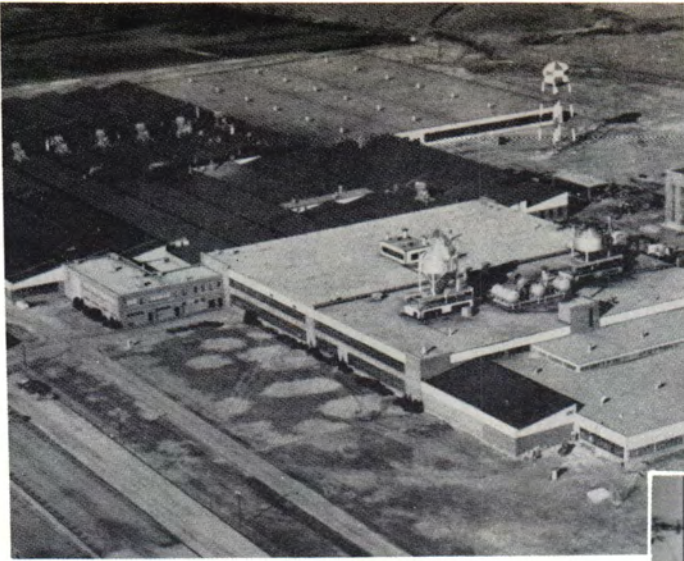
Miami, Oklahoma



THE EAGLE-PICHER COMPANY

Mining And Smelting Division

Miami, Oklahoma



THE B. F. GOODRICH COMPANY

Miami, Oklahoma

THE H. V. HUNT CLOTHING COMPANY

Miami, Oklahoma



WILEY-REXALL DRUG

MIAMI, OKLAHOMA

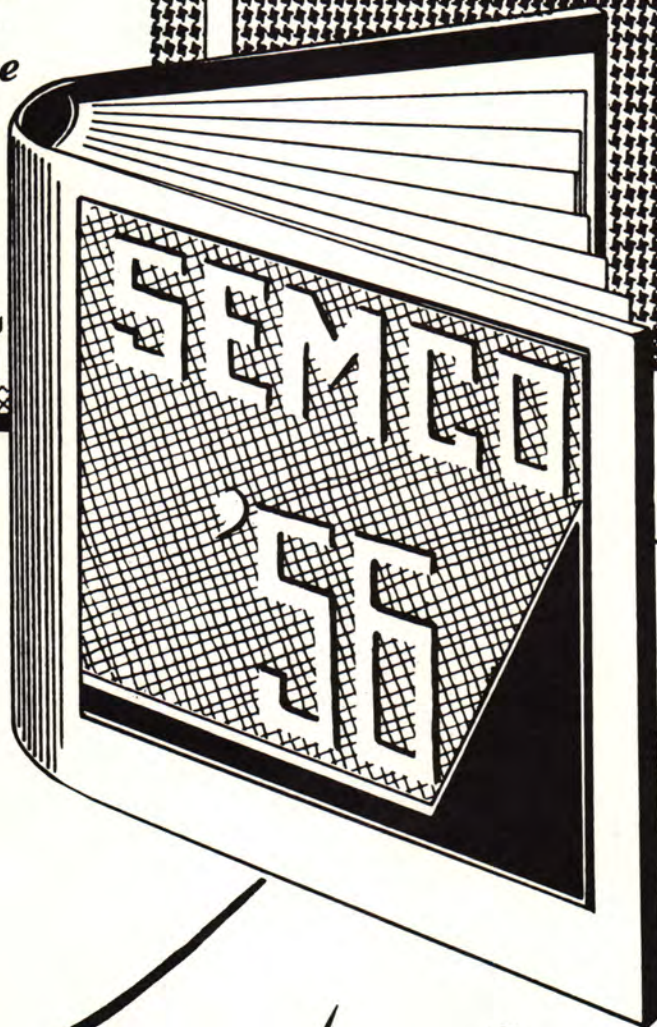
THE HOME FURNITURE & APPLIANCE STORE

MIAMI, OKLAHOMA



Thank You!

*for selecting
Semco where
quality is the
standard*



SEMCO COLOR PRESS, INC.

129 N.W. Third

Central 2-7848

MR. ROY H. NOEL
Box 1107

Oklahoma City

Forest 5-4487

MAyfair 4-1412
Joplin, Missouri



THE CONSOLIDATED SUPPLY COMPANY

Treece, Kansas

THE MIAMI SAVINGS & LOAN COMPANY

MIAMI, OKLAHOMA



THE COCA COLA BOTTLING COMPANY

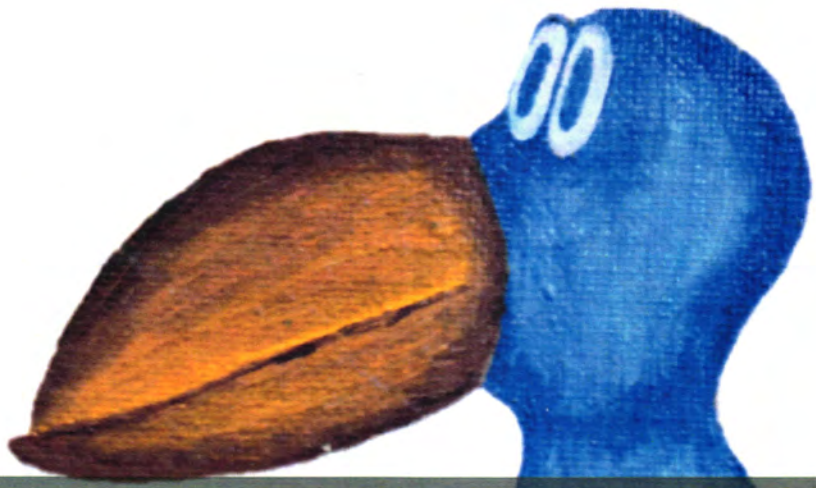
MIAMI, OKLAHOMA

These businesses contributed to the development of this annual.

**BRANDON FOOD CENTER
BUD'S DX STATION
RAY'S DRIVE-IN**

**THE PRESCRIPTION SHOP
DOC'S BAR-B-Q
MAGNETO-ELECTRIC SERVICE**





NEO A&M College Archive Collection



The Viking – the NEO A&M College Yearbook

Digital copies of The Viking, Northeastern Oklahoma A&M College's annual yearbook, are available in .pdf format on the NEO website for non-commercial purposes only. Scans were created using the best available editions; where stains, color-fading, and contributed marks (usually signatures) were visible on the original they also appear in the digital copy. The edge of some pages in oversized editions may be partially lost due to width limitations on the scanning bed. NEO yearbook editions that do not appear on the website are not part of the collection at present. If you would like to donate a yearbook, please contact the NEO Library.