



The

Viking

1952

FOR REFERENCE

NOT TO BE TAKEN FROM THIS ROOM

9223
c. 2
1952

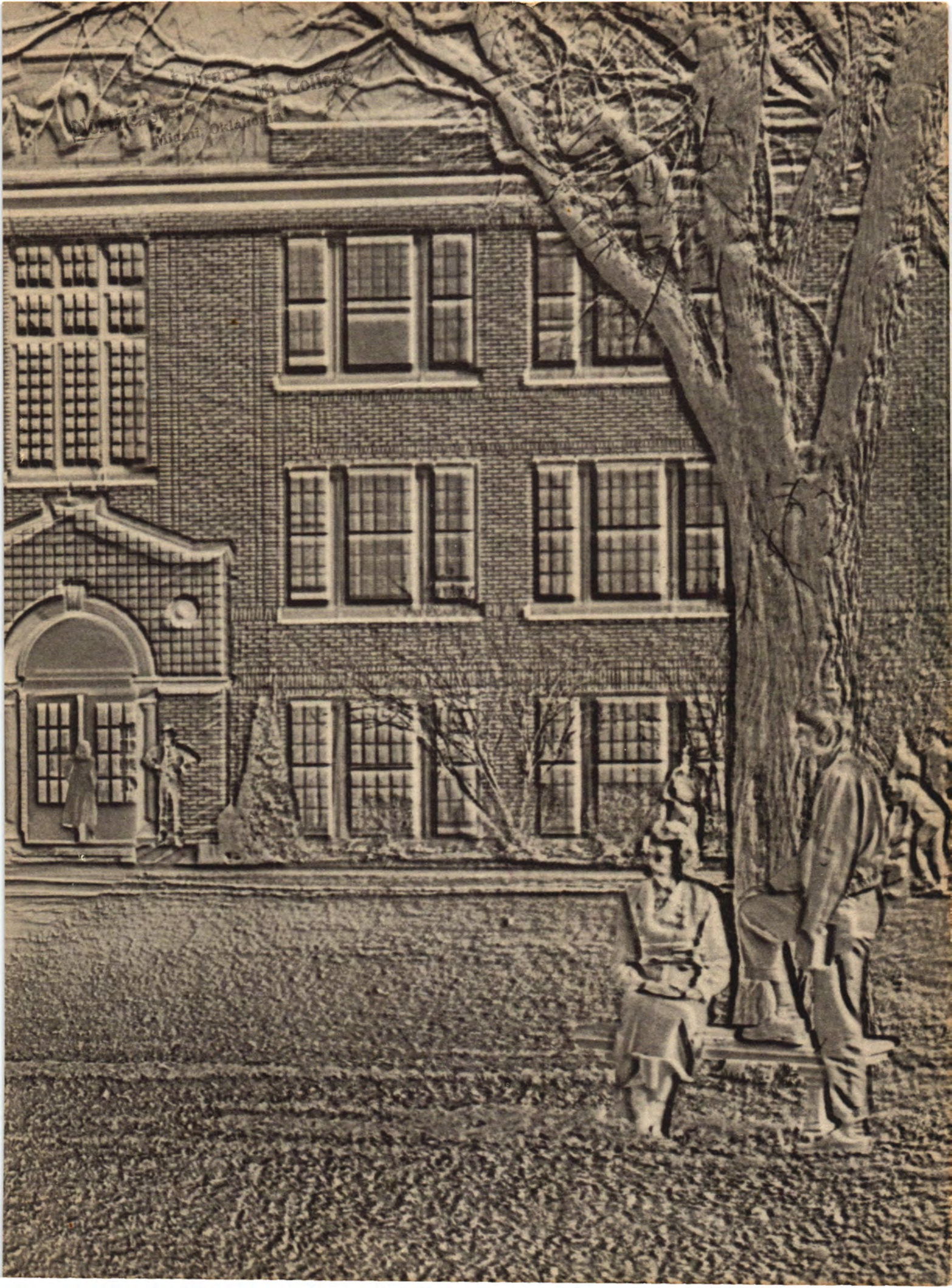


LEARNING RESOURCES CENTER
NEO A&M COLLEGE
Miami, Oklahoma 74354

Library
Northeastern A. & M. College
Miami, Oklahoma

378
N812

9223
c. 2



Library
Northwestern College
Midway, Oklahoma

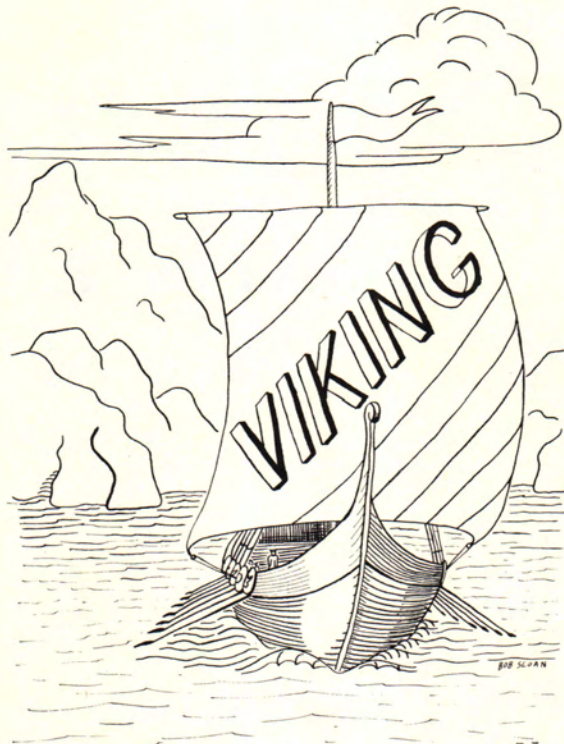
R
378
N81v

Northeastern A.&M. College
The Viking 1952

9223
c.2

The Viking

Library
 Northeastern A. & M. College
 Miami, Oklahoma



Library
 R Northeastern A. & M. College
 378 Miami, Oklahoma 9223
 1810 C.2
 1952

NORTHEASTERN OKLAHOMA A & M COLLEGE
MIAMI, OKLAHOMA

Shirley Sanders	Editor
Shirley Carlin, Lorene Crow, Pauline Williams	Associate Editors
Gerry Calhoun	Sports Editor
Dan Hensley	Business Manager
C. C. Ferree	Faculty Sponsor
H. S. Thomas	Business Advisor



STATE OF OKLAHOMA
OFFICE OF THE GOVERNOR

OKLAHOMA CITY

JOHNSTON MURRAY
GOVERNOR

GREETINGS TO STUDENTS AND FACULTY
OF NORTHEASTERN OKLAHOMA A & M COLLEGE

Many people today, when they consider the future, do so with apprehension and fear. There is reason for that fear, but also reason for optimism.

I incline toward the latter. It is because I have faith in the ideals of our college students and their teachers.

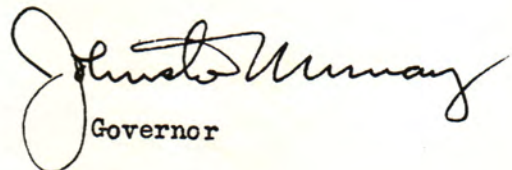
College students are the most important product our state is now producing. It's on you we depend to build Oklahoma into the greatness of which she is capable.

From your ranks will come our leaders of tomorrow. The contribution you will make for a better world depends on how much knowledge and wisdom you store up now.

Many mistakes of the past stand badly in need of correction. New problems of our day must be solved by you.

Therefore, students and faculty alike must maintain the free flow of ideas, the studious approach to all problems, and the ideal of maintaining a common effort for the common good. Throughout history, that has been the approach of men remembered for outstanding accomplishment.

It is your heritage, and also your new frontier.


Governor



BOARD OF REGENTS



Pictured above is the Board of Regents for Oklahoma A. & M. Colleges. They are from left to right: Earl Russell, Duncan; O. L. Lackey, Hitchita; R. T. Stuart, Caddo; Vice-Chairman P. E. Harrill, Oklahoma City; Chairman Edward T. Davis, Erick; Secretary W. Elmer Harber, Shawnee; Fred G. Drummond, Hominy; and, John Pat Carpenter, Red Rock. Harold Hutton, Oklahoma City, ex officio member of the Board as President of the State Board of Agriculture, is not in the picture.

DEDICATION

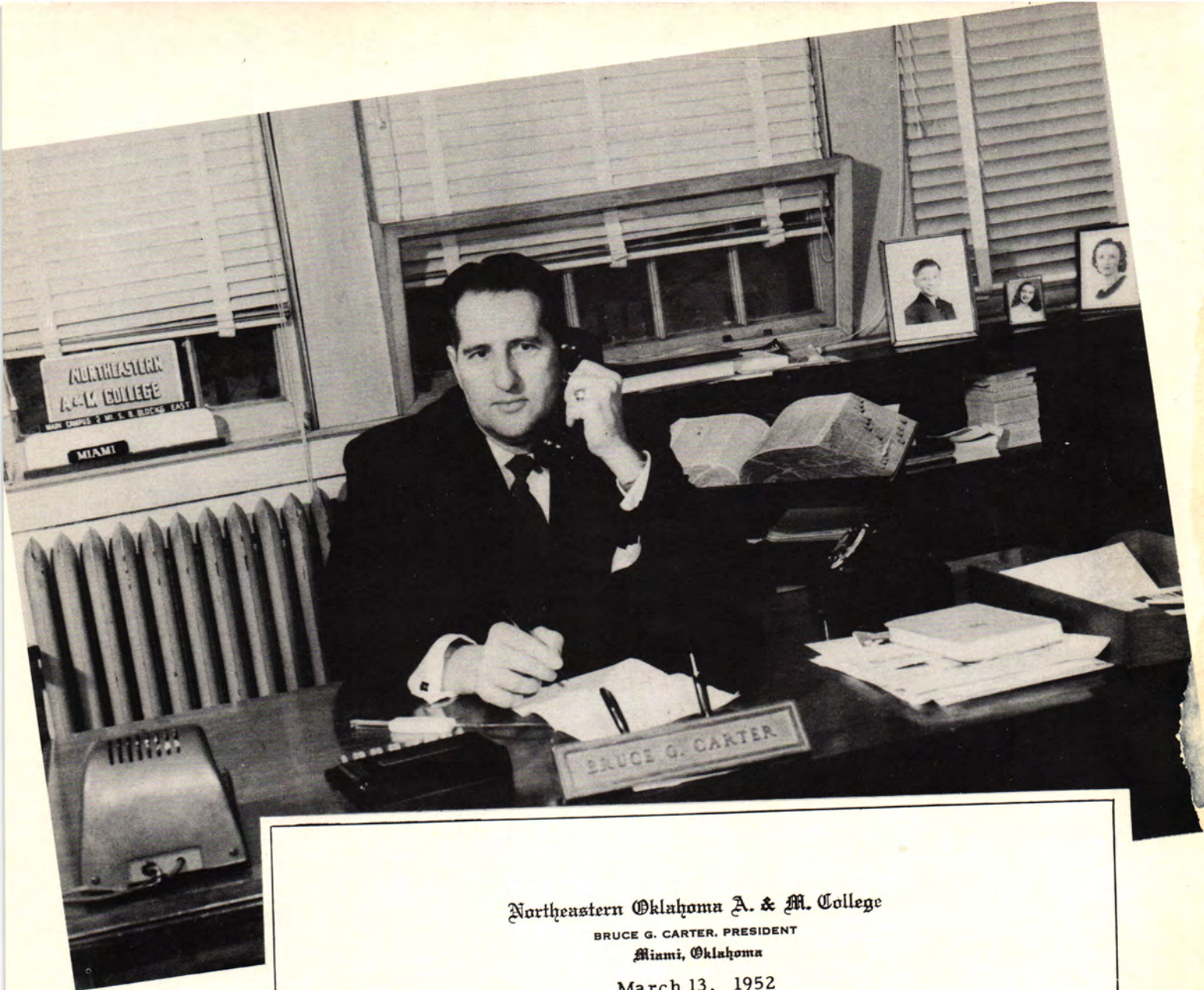


The 1952 Viking is dedicated to Miss Virginia Lindsey, instructor of history and government. A loyal supporter of any constructive effort, Miss Lindsey has been the driving force behind many successful enterprises. So this year the Viking says "Hats off to Miss Lindsey."





Dr. Bruce G. Carter and his family, Johnnie, Marilyn and Mrs. Carter. Inset is Bruce, Jr., who is attending college at Oklahoma Baptist University.



Northeastern Oklahoma A. & M. College

BRUCE G. CARTER, PRESIDENT
Miami, Oklahoma

March 13, 1952

TO THE STUDENTS OF NORTHEASTERN A. & M:

You have helped to make this an eventful year for Northeastern A. & M. We feel that we have had one of our very best student bodies during the school year 1951-52.

Our state, our nation, and our world are so much in need of educated and trained individuals that we trust and pray that each and every one of you will continue to study, to work, to grow, and to live up to the greatest and finest possibilities within you.

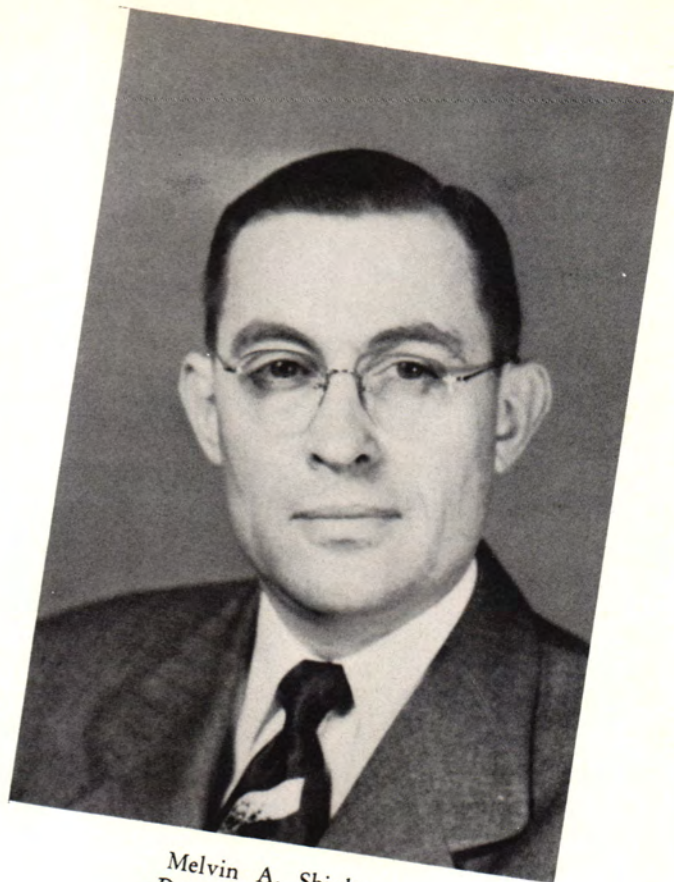
May it be a better world because you have lived in it.



Sincerely,
Bruce G. Carter

Bruce G. Carter
President

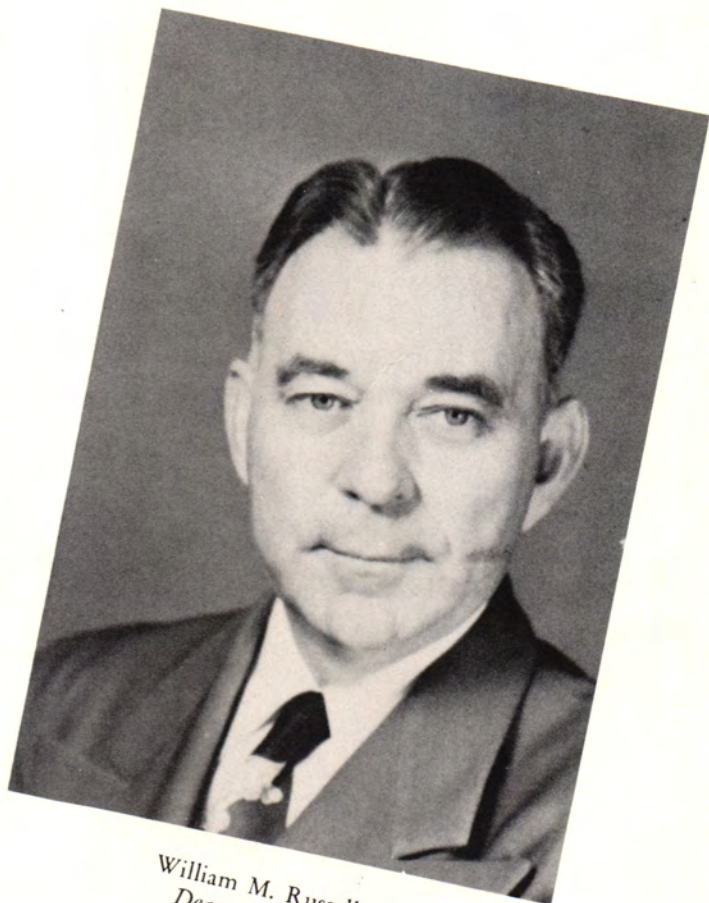
Administration



Melvin A. Shipley
Dean of the College



Faye Vann
Dean of Women



William M. Russell
Dean of Men



Homa Thomas
Business Education



Gladys Copen
Business Education



Larry Hansen
Auto Mechanics



Marvin Wood
Agriculture





Alberta Waters
Librarian



Kenneth Richards
Vocal Music



Albert Robertson
*Director of Athletics
Photography*



Joe Ables
Refrigeration





Frank W. Cunningham
Chemistry



Virginia Lindsey
American History
Government



Oren Need
Mathematics



John Thiesing
Physics





Etta Bruton
English



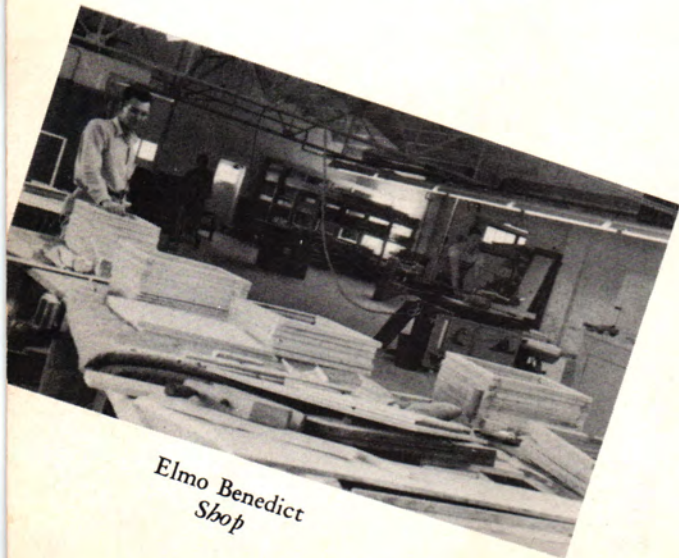
Merrill Chaney
Woodworking



Ted Wiehe
Metal Working



William J. Estes
T/Sgt., USAF



Elmo Benedict
Shop



Ruby Campbell
Mathematics



Charles Banks Wilson
Art



Ray Vanderbrug
Journalism
English



Cecil Ferree
Biological Science





Louise Granlee
Physical Education



Roy Campbell
Electronics



Douglas Payton
Piano



Harry Synar
Agriculture





Stanley V. Molander
Major, USAF
Ass't. PAS&T



Ruth Arrington
Speech



Jess Fronterhouse
Government
American History



L. E. Maples
Bible



Library
Northeastern A. & M. College
Miami, Oklahoma



Mabel Speaker
Home Economics



Don Dyer
Counselor of Men



Lemuel Ball
Agriculture





Mildred Gibson
Clerk



Elizabeth Hutts
Registrar



Marian Dyer
Dietitian



Leta Thiesing
Finance



Gladys Robertson
Book Store





Yes, we're freshmen



Just Working??



Brrrr!



No fish



Who wants to know?



Who, me?



Are you ready?

Sophomores





Sophomore Class Officers

James Ingram	President
Bennie Lee	Vice-President
Ernest Krenz	Secretary-Treasurer
Joyce Waldron	Student Council Representative
Ruth Ann Sandmire	Cheer Leader
Danny Hensley	Cheer Leader

DORTHA ABERNATHY, *Picher*; Business Ad., Aggiettes, BSU.

CAROL JEAN ABLE, *Miami*; English, FTA, Student Council treasurer, Phi Theta Kappa secretary, Gamma president, Norse Wind associate editor.

HASKELL ALLBRITTEN, *Miami*; Business Ad.



BILLY ALLEN, *Ketchum*; Business Ad., Business Club president, Red Cross, Square Dance Club.

TOMMY JOE ARMSTRONG, *Wyandotte*; Education.

DAVIE D. BARGER, *A&S*; Press Club vice-president, Chorus, Tennis team.

WANDA BEAN, *Quapaw*; Education.

JANE BEDELL, *Miami*; Sigmas, Pep Club, Aggiettes.

WILLIAM J. BENNETT, *Wyandotte*; Social Science, Student Council president, IRC, Press Club, Business Club, FTA, Young Democrats, Phi Theta Kappa.

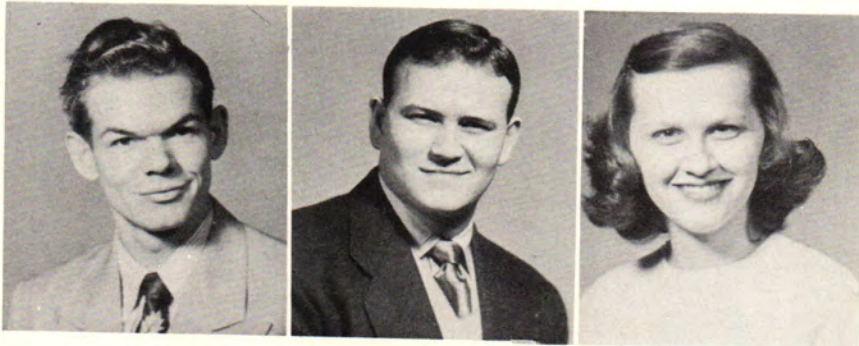


TOM BINKLEY, *Chelsea*; Pet. Engineering, Boys' Dorm president, Engineers president, LDB vice-president.

DELBERT BLACK, *Wyandotte*; A. H., Aggies.

BETTE BOYER, *Miami*; Business Ad., Aggiettes, Sigmas, Pep Club.

PAUL D. BROSS, *Miami*; Pharmacy, Phi Theta Kappa, Engineers.

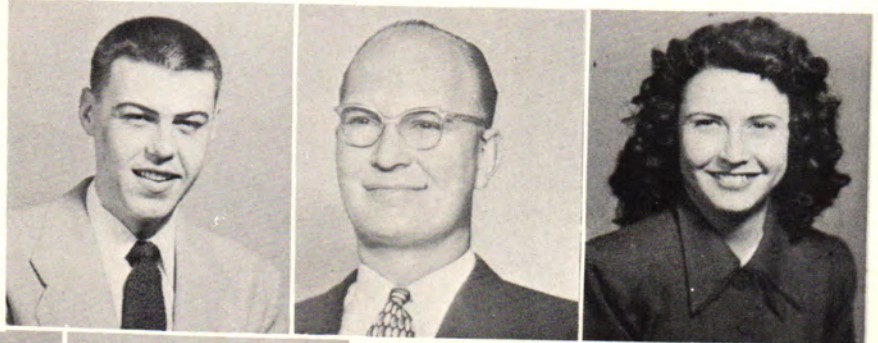


GLENN BRUMBACK, *Wier, Kan.*; Agriculture, Aggies.

PERRY BROWN, *Tulsa*; Math.

RUTH BROWN, *Tulsa*; A&S.

BILLY JOE CARR, *Nowata*; Engineering, Engineers.
 LLOYD CAUGHRAN, *Baxter Springs, Kan.*; A&S.
 ALICE CHASTAIN, *Cleora*; Home Ec., IRC vice-president, Young Democrats vice-president, Red Cross vice-president, Student Council secretary, Aggies secretary, Square Dance Club, Chorus, Phi Theta Kappa, Viking staff.



CLEM CHASTAIN, *Cleora*; Agriculture, Aggies.
 CHARLES CHILDRESS, *Chelsea*; Engineering, Engineers, Student Council.
 JACK CHILTON, *Skiatook*; Physical Ed., O Club, Student Council.

JERRY CLOPTON, *Miami*; Business Ad., Business Club.
 CLYDE COLE, *Chickasha*; A&S, O Club.
 SHERMAN COLE, *Miami*; Accounting, Phi Sigs president, Norse Wind sports editor, Press Club.





Library staff hard at work: Shirley Simone, Malka Greenvald, Pauline Williams, Neva Wasson, Alberta Waters.

DENZIL CORN, *Welch*; Agriculture, Aggies.

LORENE CROW, *Chouteau*; Home Ec., Aggiettes president, Red Cross treasurer, Press Club, BSU, Phi Theta Kappa, Pep Club, Viking staff, Student Council.

FERNANDO CRUZ, *Quechisla, Bolivia*; Elec. Engineering, Student Council vice-president; IRC secretary, Phi Theta Kappa, Phi Sigs, Engineers.



BETTY DAVIS, *Bluejacket*; Business Ad.

SHARON DAVIS, *Miami*; Business Ad., Business Club.

NELSON DEVERS, *Chouteau*; History.

ROY DOTY, *Miami*; A&S, Phi Theta Kappa.

DENNIS DOUGHTY, *Zena*; Business Ad., Student Council.

PHILLIP DOUGLAS, *White Oak*; Agri. Engineering, BSU, Engineers.



MERION DUREN, *Stigler*; Agriculture, Aggies, Press Club.

CAROLYN ELAM, *Pryor*; Home Ec., Aggiettes, Gamma secretary, Girls' Dorm president.

BETTY JUNE FARRIS, *Vinita*; Elem. Education, Gammas, Aggiettes, BSU, Viking staff.

BOB FRAZIER, *Oktaba*; Agriculture, Aggies president, Young Democrats.



KENNETH FRISBIE, *Picher*; Physical Ed., Engineers secretary, O Club, Square Dance Club president.

JOE FRY, *Fairland*; Ind. Arts, Engineers.

DICK GARDNER, *Picher*; A&S, Phi Sigs, Chorus.

ROBERT NELSON GERDES, *Wellston*; Voc. Agriculture, Young Democrats president, BSU vice-president, Student Council, Aggies, Square Dance Club vice-president.

BILLY GOODMAN, *Fairland*; A&S, Engineers, Phi Theta Kappa.

BARBARA ANN GRAHAM, *Picher*; A&S, Aggiettes, Viking staff, Chorus, Speech club.



WILLIS GRIFFIN, *Pryor*; Elec. Engineering, Engineers, LDB president.

NED HALL, *Seminole*; Business Ad.

A. J. HAMLETT, JR., *Chouteau*; Engineering, Engineers.

BOB HAMMONS, *Claremore*; A&S, Phi Theta Kappa, Press club, Student Council, Norse Wind radio editor, Viking staff.

TOM HARNEY, *Nowata*; Poultry Husbandry, LDB, Aggies.

NAOMI JO HARP, *Vinita*; Business Ad., Business Club secretary-treasurer, Young Democrats secretary, Red Cross secretary, IRC, Student Council, Aggiettes, Chorus, Viking staff.





Students attend the assembly.

NORMA JEAN HARRELL, *Quapaw*; Education, Aggieettes.

LINVEL HELTON, *Estella*; A. H., Aggies, Young Democrats.

ROBERT L. HENDRICKSON, *Nowata*; Engineering, Engineers, Young Democrats.



DANNY HENSLEY, *Miami*; A&S, Phi Theta Kappa vice-president, Viking staff business manager, Norse Wind business manager, BSU song director, Chorus, Student Council.

DORA HOPPER, *Fairland*; Music, Aggieettes.

CHARLES HOWARD, *Miami*; History.

JIM HUDSPETH, *Afton*; A&S, Press Club.

JAMES INGRAM, *Henryetta*; Pre-law, O Club.

BOBBY JAMES, *Miami*; A&S.

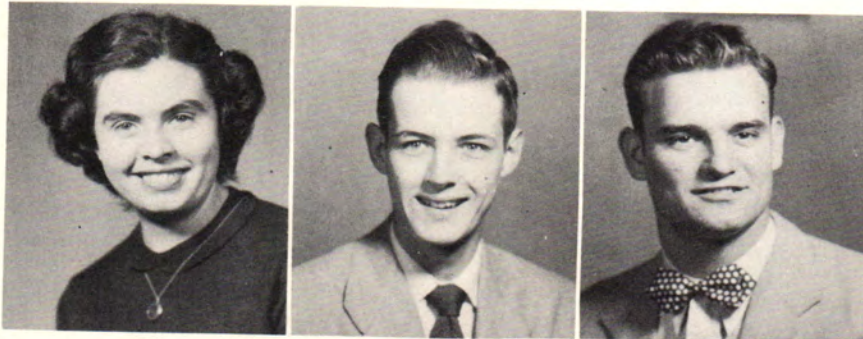


JOSEPH A. JOHNSON, *Galena, Kan.*; Math.

DON KENNEDY, *Miami*; Pre-dental, Phi Sigs.

REX KIMMEL, *Miami*; Engineering, Phi Sigs, Engineers.

BILLY RAY KLINE, *Fairland*; Agriculture, Aggies.



MARLENE KNOX, *Miami*; Elem. Education, FTA vice-president, Aggiettes.

BOBBY GENE KRAYBILL, *Miami*; Elec. Engineering, Phi Theta Kappa, Engineers.

ERNEST KRENZ, *Lenap*; Agriculture, Aggies, O Club, LDB president.

BENNIE LEE, *Treece, Kan.*; Physical Ed., O Club.

CONNIE LEGAKO, *Wellston*; Agriculture, Aggies, O Club.

GEORGE LEWIS, *Wyandotte*; Engineering, Engineers.



PAUL McCRAY, *Miami*; A&S.

JOYCE McGUIRK, *Quapaw*; Home Ec., Aggiettes, Gammas.

CECIL MARKS, *Vinita*; Ind. Arts.

EDWARD LOOP, *Gardner, Kan.*; Business Ad., O Club.

BOB LOWE, *Tulsa*; Engineering, Engineers.

DALE LYNCH, *Chelsea*; Ind. Arts, Engineers.



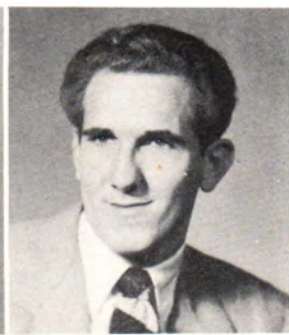


Studying in the library?????

ELDON MARNEY, *Commerce*; A&S.

DORIS MASHBURN, *Miami*; A&S, Gamma vice-president, Phi Theta Kappa, Aggiettes

TED MOORE, *Tulsa*; Physical Ed., O Club, BSU, Viking staff, ROTC.



JACK MORGAN, *Pryor*; Refrigeration, Engineers.
 MAX M. MULLEN, *Inola*; Ind. Arts, Engineers.
 ROGER NAIL, *Vinita*; Business Ad., Business Club, Student Council.

JOAN NEWTON, *Miami*; A&S, Sigmas.

ALMEDA NICKS, *Fairland*; Music, Gammas, Chorus, Mixed quartet.

JAMES ORR, *Tulsa*; Business Ad.



BILL PACE, *Treeco, Kan.*; Physical Ed., O Club.
 RENE F. PALLY, *La Paz, Bolivia*; Civil Engineering, Engineers, IRC, Phi Sigs.
 FREDDIE PAYTON, *Fairland*; A. H., Aggies.

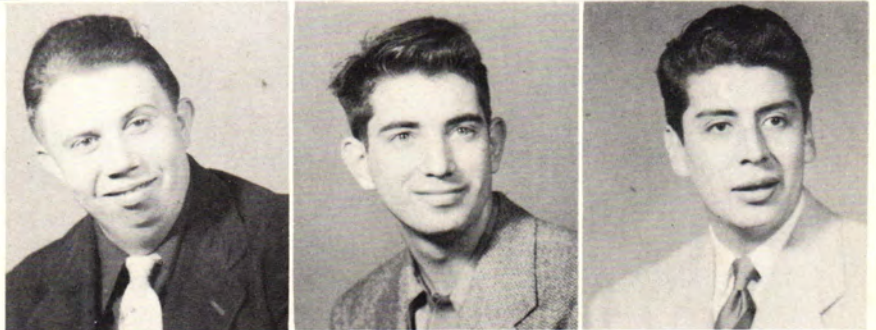


VERL PHARIS, *Seneca, Mo.*; A&S, Norse Wind editor, Phi Theta Kappa president, LDB secretary-treasurer, Chorus, Square Dance Club, Press Club.



JOHN PHILLIBER, *Baxter Springs, Kan.*; A&S.
FRANCES PINEDA, *San Pedro Sula, Honduras*;
Business Ad., Business club, Aggiettes.
LEROY POTTER, *Miami*; Ind. Arts.

JACK PRICE, *Fairland*; English, Phi Theta Kappa.
ROY RADSCHWEIT, *Disney*; Chemistry, Engineers secretary.
SALOMON RIVAS, *La Paz, Bolivia*; Metallurgical & Geol. Engineering, Engineers, BSU.



GENE ROBBINS, *Chelsea*; Physical Ed., Square Dance Club.
ED ROHWEDDER, *Phoenix, Ariz.*; A&S.
GEORGE ROMICK, *Miami*; Ind. Arts, Phi Sigs president.

MARIO SAENZ, *Guatemala City, Guatemala*; Vet. Sci., Phi Sigs, Tennis team.
FRANK SANDERS, *Cardin*; A&S.
JERRY SANDERS, *Southwest City, Mo.*; Pre-dental.





George and Rex burn the midnight oil.

SHIRLEY SANDERS, *Chouteau*; Journalism, Viking editor, Norse Wind associate editor, Press Club president, Phi Theta Kappa treasurer, Student Council, Aggiettes. Business Club, BSU.

RUTH ANN SANDMIRE, *Miami*; A&S, Viking Queen, Sigmas vice-president, Aggiettes, Pep Club.

BOB SLOAN, *Miami*; Art, Viking art editor.



BOB SMITH, *Vinita*; Business Ad., O Club, Business Club.

JIM SMITH, *Miami*; Agriculture, Aggies, Speech club, Square Dance Club.

JOHN SMITH, *Claremore*; Physical Ed., Business Club.

L. E. SPEEGLE, *Bartlesville*; Business Ad., Business Club.

MARGIE STILL, *Commerce*, Business Ad.

JAMES SUDDARTH, *Chickasha*; Engineering, Engineers, Phi Theta Kappa.



JERRY TURNER, *Fairland*; Geological Engineering, Engineers, Chorus, Mixed quartet.

HENRY VAN BEBER, *Miami*; A&S, Phi Sigs Grand Counselor.

ROBERT VANCE VANDERBURG, *Chicota, Tex.*; Phi Sigs treasurer, Student Council, Business Club.



Bob, A. J. and George in their Sunday best.



JOYCE JEAN WALDRON, *Wyandotte*; Home Ec., FTA president, Aggiettes, Student Council, Phi Theta Kappa.

WALLY WALLINGFORD, *Cbelsea*; Elec. Engineering, Engineers, Chorus, Mixed quartet.

DAVID WEATHERFORD, *Elkbart, Tex.*; Business Ad., IRC president, Business Club.

GEORGE WEBB, *Miami*; Engineering, Engineers, Phi Theta Kappa.

MARTHA WHEELER, *Ketchum*; Business Ad., Aggiettes.

BILL WHIPKEY, *Picher*; Business Ad., Phi Sigs, Boxing.



BOB WHITCHURCH, *Nowata*; Ind. Arts, Engineers, LDB.

MARK WIEDENMANN, *Vinita*; Music, Red Cross president, Chorus, Mixed quartet.

SHARYN WILEY, *Miami*; Business Ad., Sigmas treasurer, Pep Club, Aggiettes.

HOWARD WILLIAMS, *Baxter Springs, Kan.*; A&S.

PAULINE WILLIAMS, *Cbouteau*; Home Ec., Aggiettes vice-president; Press Club treasurer; Pep Club, BSU, Phi Theta Kappa, Viking staff.

BOB WYLY, *Vinita*; Business Ad., Business Club.





Springtime again



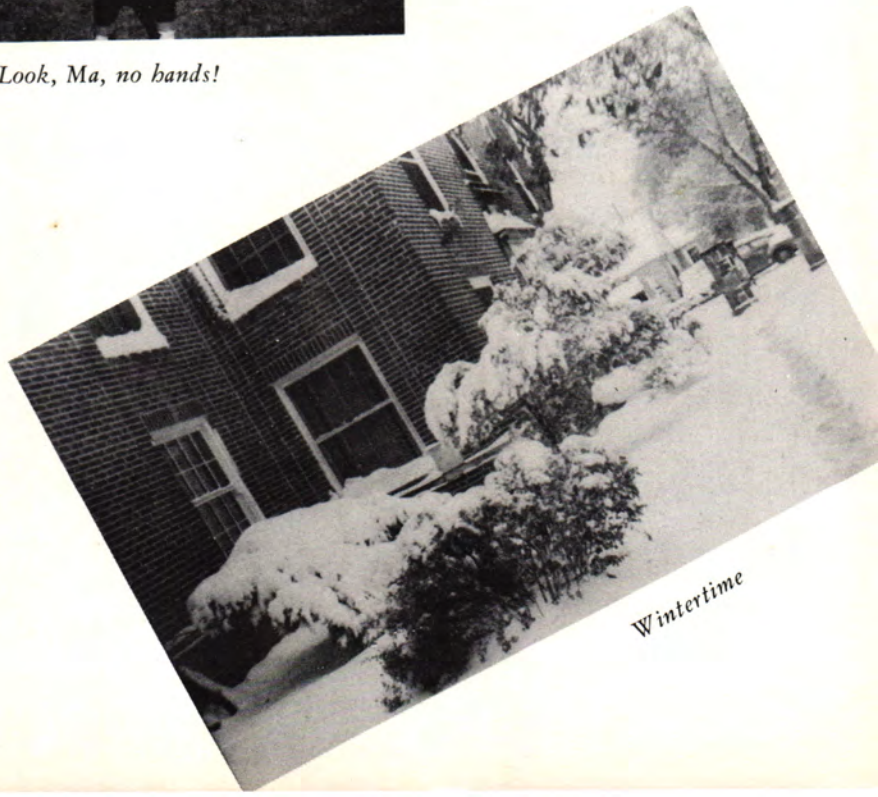
Passin' the time



Look, Ma, no hands!

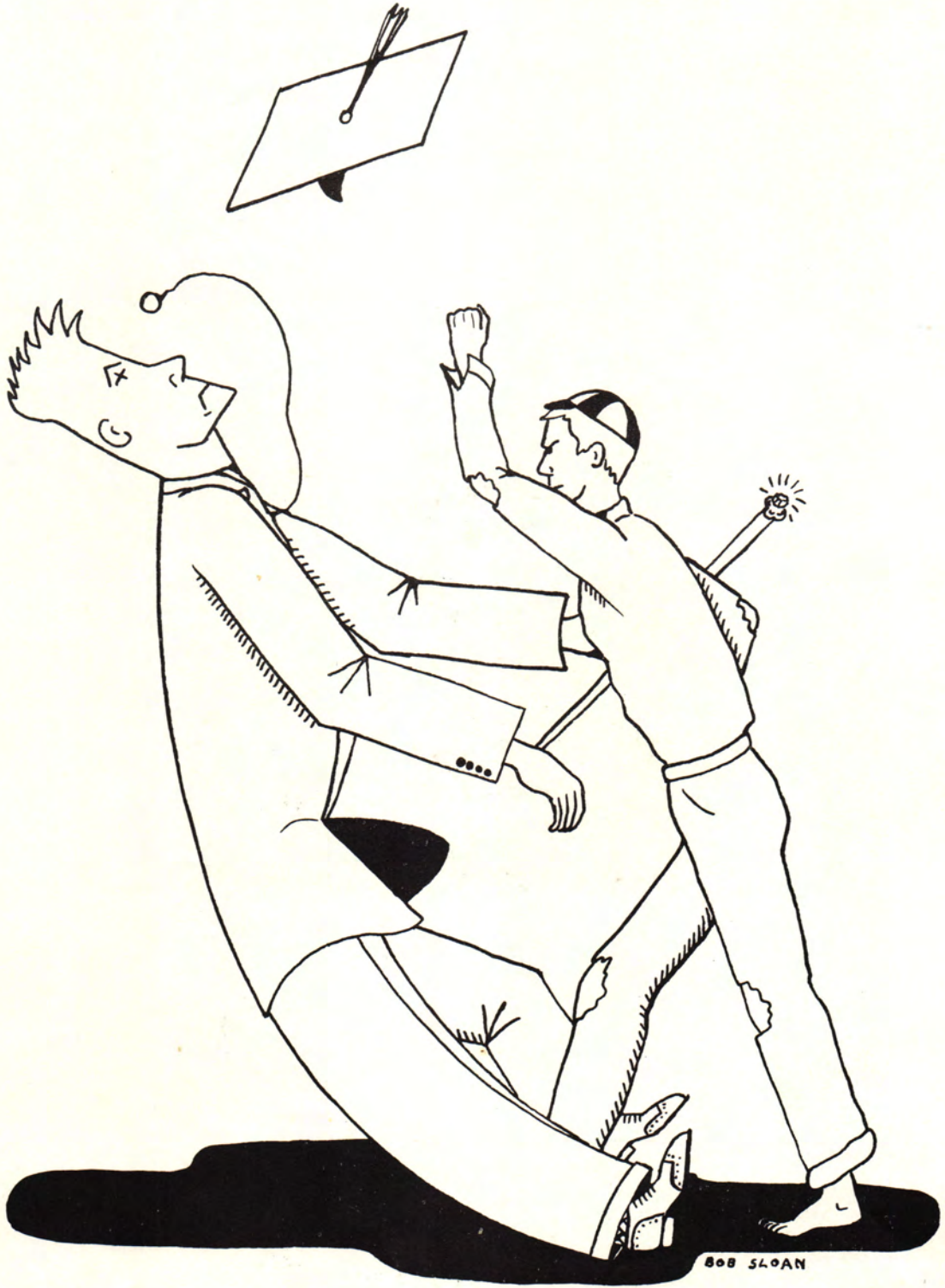


Frances resting



Wintertime

Freshmen



BOB SLOAN

Freshman Class



H. M. ABBASS, *Kerbala, Iraq.*

CLOETA AGNEW, *Miami*; Freshmen Class treasurer,
Pep Club, Sigma Iota Chi, Aggiettes, Square
Dance Club, BSU, Viking.

JOYCE AKIN, *Disney.*

ABDIL AMIR JABIR AL-HAMMADI, *Babilon, Iraq.*

MOHAMMED-AL-KATIB, *Diwanya, Iraq.*

JAMES ATKINSON, *Quapaw.*



BRANDON ATKINS, *Holdenville*; Phi Sigs, Boxing.

BOB BAKER, *Fairland*; O Club.

JOHN BARLOW, *Tulsa*; Press Club, Norse Wind
Circulation Manager.

RICHARD BARTLETT, *Miami*; Phi Sigs, Engineers.

JACK BAYLISS, *Picher.*

JACK BEGLEY, *Kellyville*, Basketball.



BILLIE JUNE BLACK, *Wyandotte.*

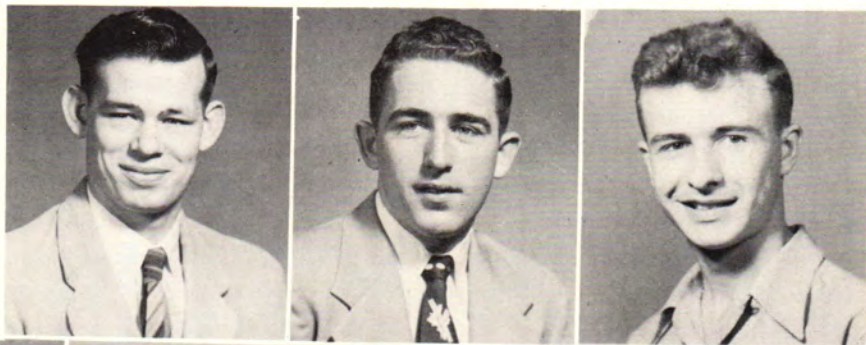
MICHAEL BLOSE, *Drumright*; BSU, Engineers, O
Club.

BILL BOYCE, *Shawnee*; O Club, BSU.

EARL BOYER, *Stillwater*; O Club.

GAYLE BROCK, *Anderson, Mo.*; Aggies secretary.

ELDON BROYLES, *Miami*.



RONNIE BUTTERFIELD, *Skiatook*.

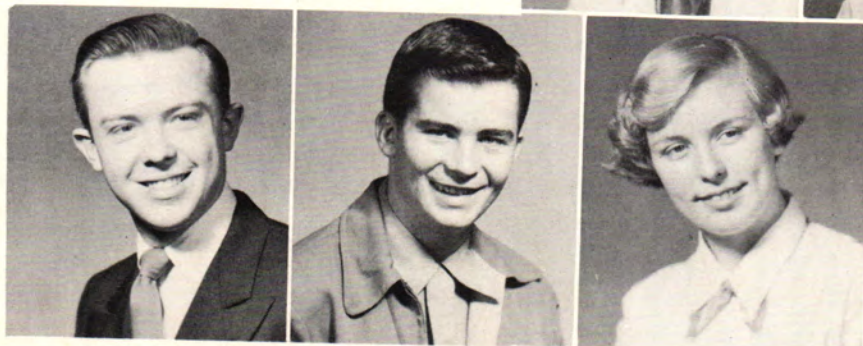
GERRY CALHOUN, *Wewoka*; Freshman Class president, O Club, Football, Engineers, BSU president, Viking Staff Sports Editor.

BEN CAMBRON, *Nowata*.

SHIRLEY CARLIN, *Picher*; Aggiettes, Chorus, Pep Club, Square Dance Club, Viking Staff.

ALAN CATHEY, *Vinita*; Business Club, Phi Sigs, Square Dance Club, BSU, ROTC.

BILL CAVES, *Tulsa*; O Club, IRC.



MIKE CHAMPLIN, *Miami*.

DAVID CLAXTON, *McAlester*.

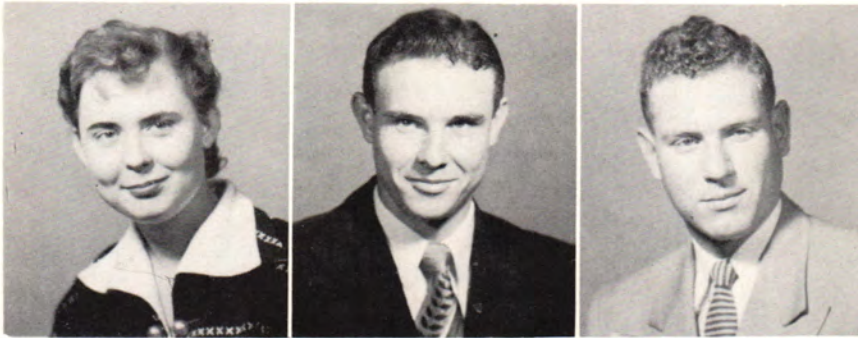
PRISCILLA COKER, *Miami*; Viking, BSU, Aggiettes, Pep Club, Square Dance Club.

HARMON COPE, *Miami*; Phi Sigs Vice-President, Square Dance Club.

REX COPPEDGE, *Seminole*; O Club.

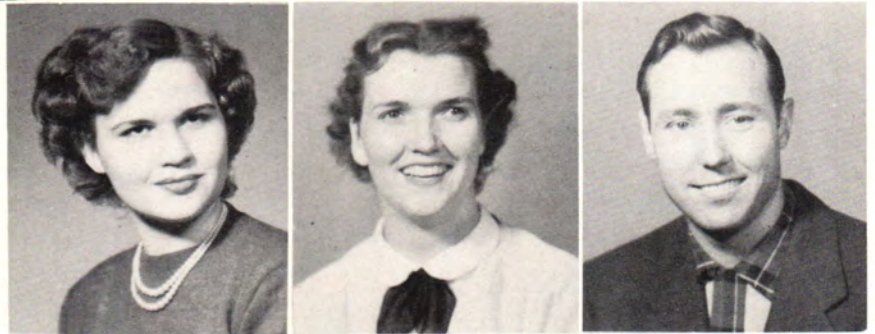
JO WILLA COX, *Cardin*; Aggiettes, Chorus, Red Cross, Square Dance Club, Pep Club.





FAWN CROFT, *Choteau*; Pep Club, Aggiettes.
 DICK CURREY, *Fairland*; Engineers.
 BILL DAREING, *Miami*; Engineers secretary.

PHYLLIS DENNEY, *Miami*; Aggiettes, Square Dance Club.
 HAZEL DENTON, *Claremore*; Phi Theta Kappa, Square Dance Club.
 JAMES DITMORE, *Miami*.



MARY DOTY, *Miami*; Aggiettes, BSU vice-president.
 VIRGINIA DRAKE, *Cardin*.
 BILL DUNBAR, *Kellyville*; Aggies.

KENNETH EAST, *Picher*; Engineers.
 MARGIE EDWARDS, *Strang*; BSU, Aggiettes, Student Council, FTA.
 JACK ELGIN, *Nowata*; Business Club.



DON ENOS, *Seminole*; O Club.
 ORVIN FARMER, *Tulsa*; Aggies.
 JOHN FERGUSON, *Tulsa*; O Club.

Library
 Northeastern A. & M. College
 Miami, Oklahoma

LEONARD GEORGE, *Miami*.

CHARLES GIBSON, *Miami*.

CARLOS GLICKSMAN, *Lima, Peru*; Phi Theta Kappa.



BOB GOFF, *Joplin, Mo.*

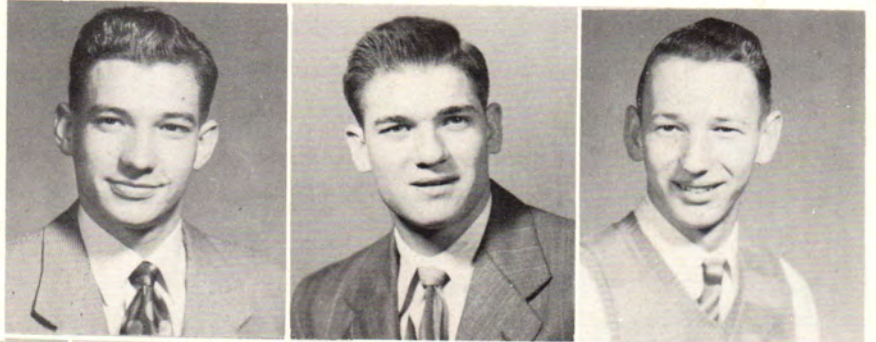
MALKA GREENVALD, *Grove*; FTA, Phi Theta Kappa, Square Dance Club.

DIXIE GRIMES, *Disney*; Red Cross, Chorus, Square Dance Club, Pep Club.

JOHN GRUENBERG, *Chelsea*; Engineers.

CHARLES GUTHRIE, *Big Cabin*; Aggies.

CONNIE HALL, *Quapaw*; ROTC, Ind. Arts.



DONALD HALL, *Commerce*; Press Club.

ROBERT HAMER, *Quapaw*; Aggies.

HAROLD HAMLETT, *Chouteau*.

CONRAD HANAN, *Big Cabin*; Aggies, Square Dance Club.

JEROME HANEY, *Big Cabin*.

BEN HANING, *Wewoka*; Aggies, O Club.





GLENDA HARDY, *Southwest City, Mo.*; Gamma, Square Dance Club, Aggiettes, Business Club, Student Council, Pep Club.

OTIS HARLAN, *Big Cabin*; Engineers, Ind. Arts.

MELVIN HARPER, *Baxter Springs, Kan.*; ROTC.

JOHN HARRIS, *Jacksonville, Fla.*; O Club, IRC, Press Club.

JEFF HARRIS, *Strang*; Aggies.

MARGARET HARRISON, *Tiff City, Mo.*; FTA, Aggiettes, Pep Club.



MURTADHA HASHIM EL HASHIMI, *Baquba, Iraq.*

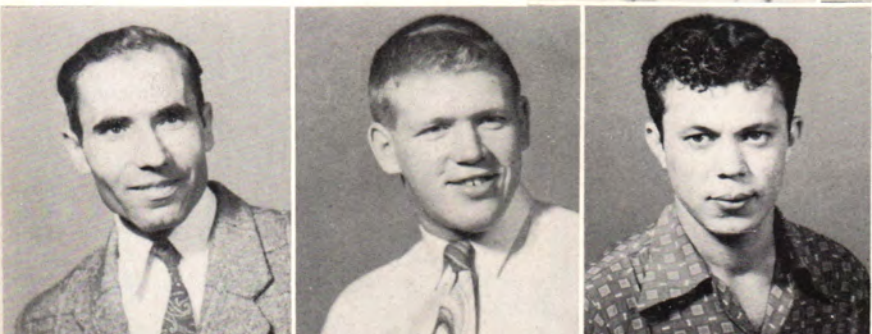
FRANCES HATFIELD, *Miami*; Sigmas, Student Council, Phi Theta Kappa.

JERRY HIPPS, *Jacksonville, Fla.*; O Club, Football, IRC, Press Club, ROTC.

FAYMON HOLMES, *Lake Wales, Fla.*; O Club, Football.

HOWARD HUDSON, *Commerce*; Press Club.

IMOGENE HUNTER, *Cleora*; IRC, Business Club, BSU.



FADHILL HUSSAIN, *Daquq Kirkuk, Iraq.*

JAMES HUXTABLE, *Tulsa*; O Club, Football.

ROLANDO IZAGUIRRE, *San Pedro, Honduras.*

AMIR M. HAHOMGIRI, *Teberan, Iran.*

JEAN JIMERSON, *Miami*; Mixed Chorus, Mixed Quartet.

DAVID JOHNSON, *Joplin, Mo.*; ROTC.



BOB KAUFFMAN, *Nowata*; O Club, Freshman Class vice-president.

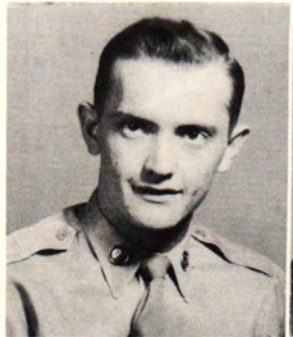
MELVIN KAUP, *Vinita*; Engineers.

PATRICIA KEITHLEY, *Picher*; Chorus, Aggiettes, Viking, Red Cross, Pep Club, Square Dance Club.

DENNIS KELSEY, *Claremore*; Young Democrats.

SAID KHALILI, *Teberan, Iran.*

HAIDEH KHALILI, *Teberan, Iran.*



HOWARD KLINEFELTER, *Miami.*

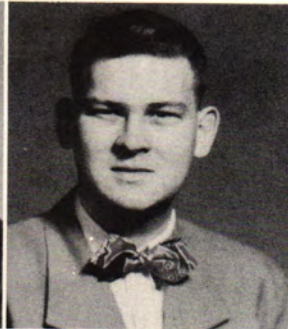
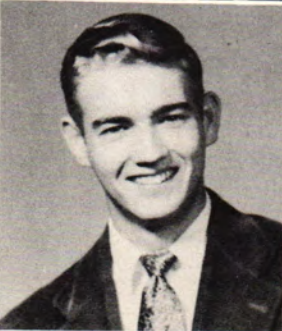
EZATALLAH KOHANIN, *Teberan, Iran.*

MARGEVA LAKEBRINK, *Welch*; Business Club, Square Dance Club.

JOE LANGLEY, *Pryor.*

THOMAS LANUM, *Tulsa*; Aggies.

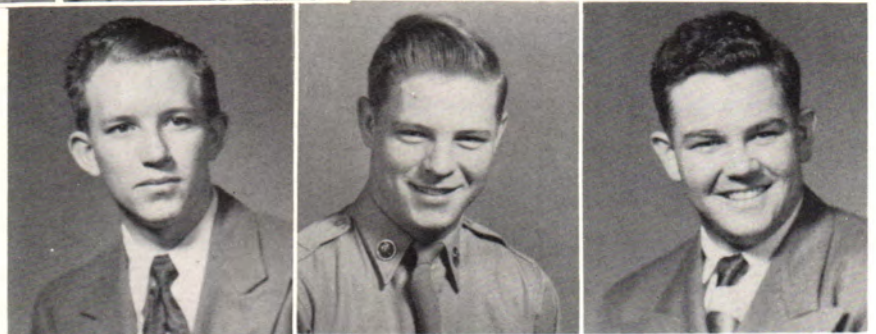
JOHN LAUE, *Miami*; Aggies.





JOHN LAWRENCE, *Miami*; O Club.
 MARYETTA LOVEALL, *Miami*; Sigmas, Pep Club,
 Square Dance Club, Chorus.
 WAYNE McBEE, *Miami*; Ind. Arts.

DON McCrackin, *Claremore*; Aggies.
 EDWARD McFALL, *Welch*; Ind. Arts.
 EDDIE McGINNIS, *Miami*; Phi Sigs president.



MARGARET ANN MARKS, *Miami*; Sigmas, Pep
 Club, Square Dance Club, Viking.
 VIRGIL MAYABB, *Skiatook*; Basketball.
 MAJTABA MEHROOZ, *Teberan, Iran*.

AHMED MONTAKHAL, *Sheroz, Iran*.
 ALLEN MOTTER, *Chouteau*; Aggies.
 GERALD MOUDY, *Commerce*; ROTC.



PATRICIA NEAL, *Miami*; Gammas, Student Council,
 Square Dance Club, BSU pianist.
 JACK NIEL, *Drumright*.
 MAX PATTON, *Miami*.

CHARLES PENDERGRAFT, *Miami*; Phi Sigs, Engineers, ROTC.

LADORIS PETERSON, *Miami*; Aggiettes, Square Dance Club.

HARLEY PITCHER, *Neosho, Mo.*; Phi Sigs, IRC, FTA, Chorus.



FRED PITTS, *Joplin, Mo.*

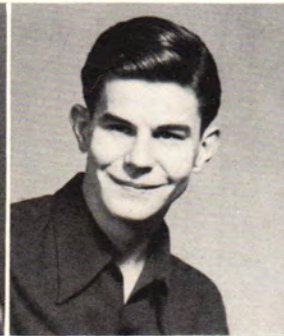
GLEN PLUMB, *Ft. Lauderdale, Fla.*; O Club.

BILL PLUMB, *Ft. Lauderdale, Fla.*; O Club, Student Council.

RICHARD PRICE, *Bartlesville*; Aggies.

DAVID RANGER, *Miami*; Phi Sigs.

DALE RICE, *Big Cabin*; Aggies vice-president.



FRANCES RIMMER, *Picher*.

WILLIAM RICHARDSON, *Boatman*; Aggies.

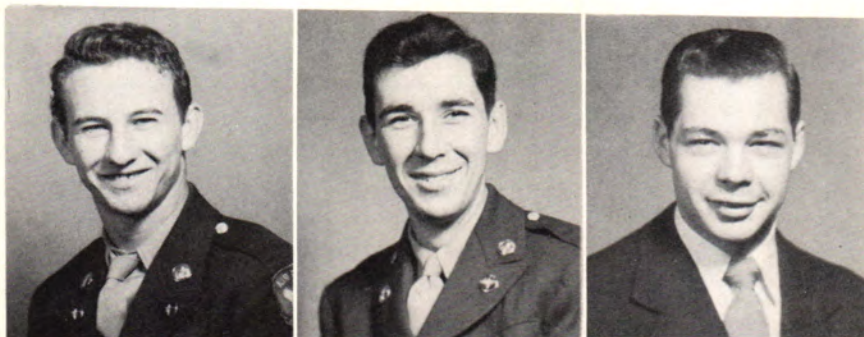
BOB ROTHROCK, *Seminole*; O Club, Student Council.

JIM RUSHER, *Tulsa*; O Club, Aggies.

WANDA RUSSELL, *Claremore*; Square Dance Club.

ABDUL SAFFAURI, *Mosul, Iraq*.





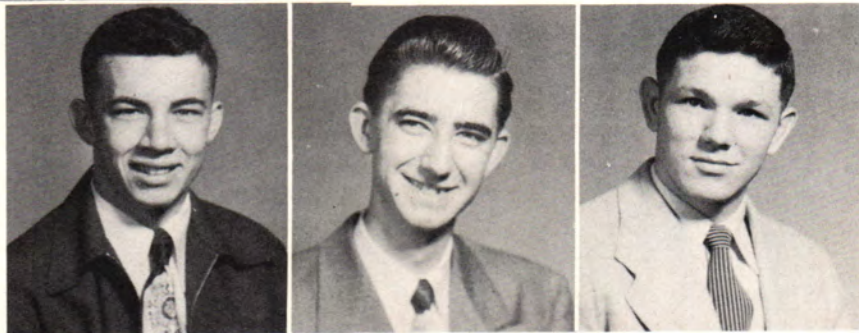
BILL SCANTLEN, *Muskogee*; O Club, ROTC.
 JERALD SCHMALHORST, *Miami*; Phi Sigs, Engineers.
 CHARLES SCOTT, *Commerce*; Phi Sigs.

PAUL SCOTT, *Broken Arrow*; O Club, Square Dance Club, BSU, ROTC.
 BETTY SHEPHERD, *Quapaw*; BSU.
 JAMES SHOPE, *Welch*; Aggies.



CARL SILLS, *Quapaw*.
 BETTY JEAN SINGLETON, *Picher*; BSU.
 PHILLIP SMITH, *Joplin*.

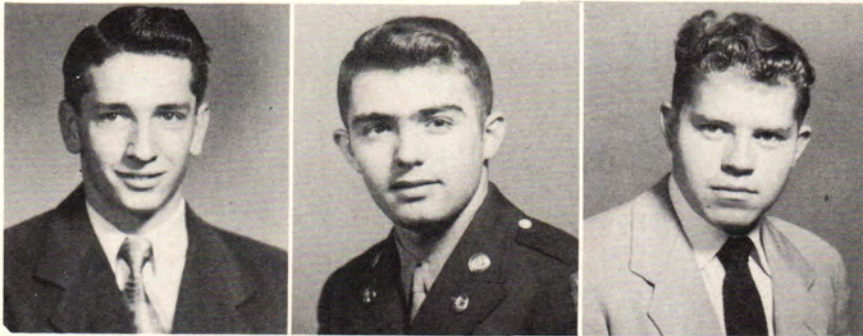
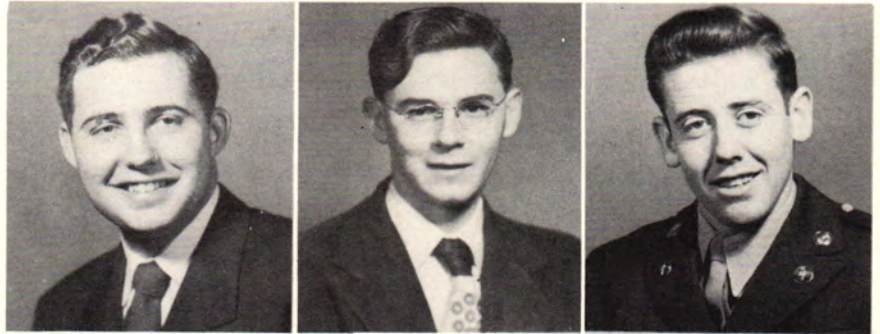
ALAN SPEAKER, *Commerce*; ROTC.
 JERRY STEVENS, *Miami*; Engineers.
 FRANKLIN TAYLOR, *Nowata*; O Club.



RUTHFORD TAYLOR, *Ft. Pierce, Florida*; O Club.
 BARBARA THOMAS, *Miami*; Press Club secretary.
 JACK THOMAS, *Grove*; Aggies.

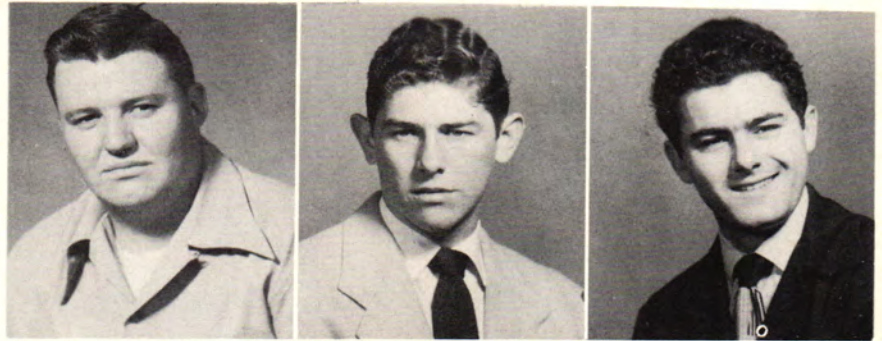
Library
 Northeastern A. & M. College
 Miami, Oklahoma

ROBERT THOMAS, *Joplin, Mo.*; ROTC.
 CHARLES THOMAS, *Grove*; Engineers Club.
 JOHN TIBBS, *Chelsea*; Engineers Club.



GEORGE TIBBS, *Chelsea*.
 JERI TREAGER, *Joplin, Mo.*
 BILL TREAT, *Wewoka*; O Club.

JIM TUCKER, *Broken Arrow*; O Club, ROTC,
 Square Dance Club.
 HOWARD WAGNER, *Sapulpa*; Basketball.
 GENE WALDECK, *Garden Grove, Calif.*; Press Club.



DARRELL WALLIS, *Anderson, Mo.*; Aggies.
 SUE WARBINTON, *Big Cabin*; Business Club, In-
 ternational relations, Square Dance Club.
 JOE EBB WARD, *Picher*; ROTC.

CAROL JOYCE WARD, Sigmas, Phi Theta Kappa,
 Square Dance Club.
 JACK WARD, *Locut Grove*; O Club.
 NEVA WASSON, *Grove*; Press Club, FTA, Aggi-
 ettes, International Relations, Phi Theta Kappa.





MONGKOL WATTANAYAGORN, *Tattani, Thailand.*

MARY WEISINGER, *Miami*; Sigmas, Pep Club, Homecoming Queen.

DON WEST, *Neosho, Mo.*

RUTH WILLIAMS, *Carthage, Mo.*; Gammas, Business Club, Aggiettes, Pep Club.

VERA WILLIAMS, *Southwest City*; Aggiettes, FTA.

VERNON WILSON, *Commerce.*



TOBY WISE, *Wewoka.*

ARDYS WOLFE, *Picher*; Aggiettes, Red Cross, Press Club, Student Council, Chorus, Square Dance Club, Viking Staff, Pep Clut

DENNIS WOODS, *Picher*; ROTC.



Imogene and Martha

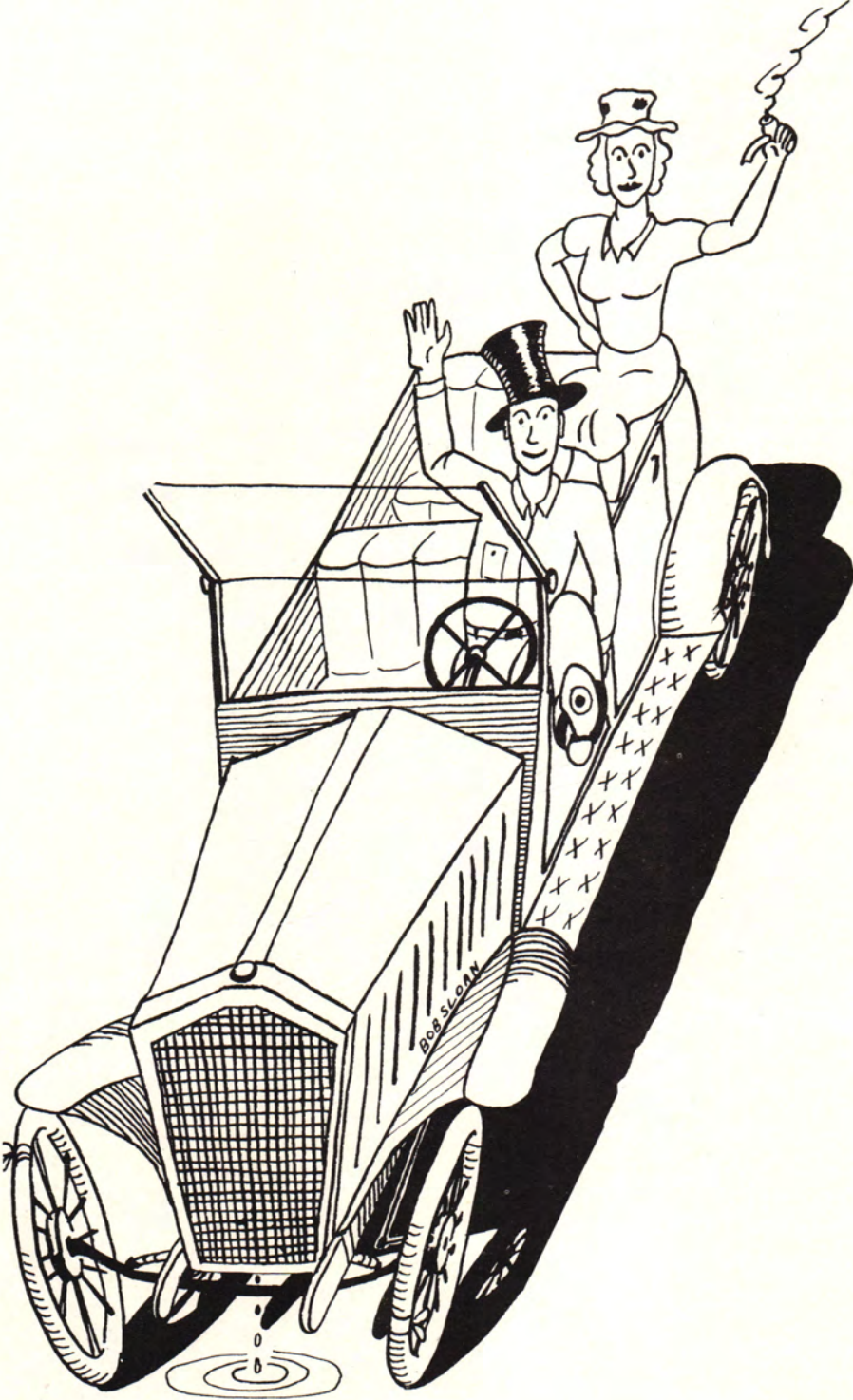


Who Got Wet?

"Door of Knowledge"



Royalty





VIKING QUEEN
Ruth Ann Sandmire





Viking Judge

Viking Queen Attendants

MALKA GREENVALD



ALICE CHASTAIN



FOOTBALL QUEEN
Ardys Wolfe

Ardys Wolfe, the football queen for the undefeated Norsemen this year, was crowned by Ben Lee at the Football Banquet.



HOMECOMING QUEEN
Mary Weisinger



Engineer Queen
Jean Jimerson



Press Club Queen
Ardys Wolfe



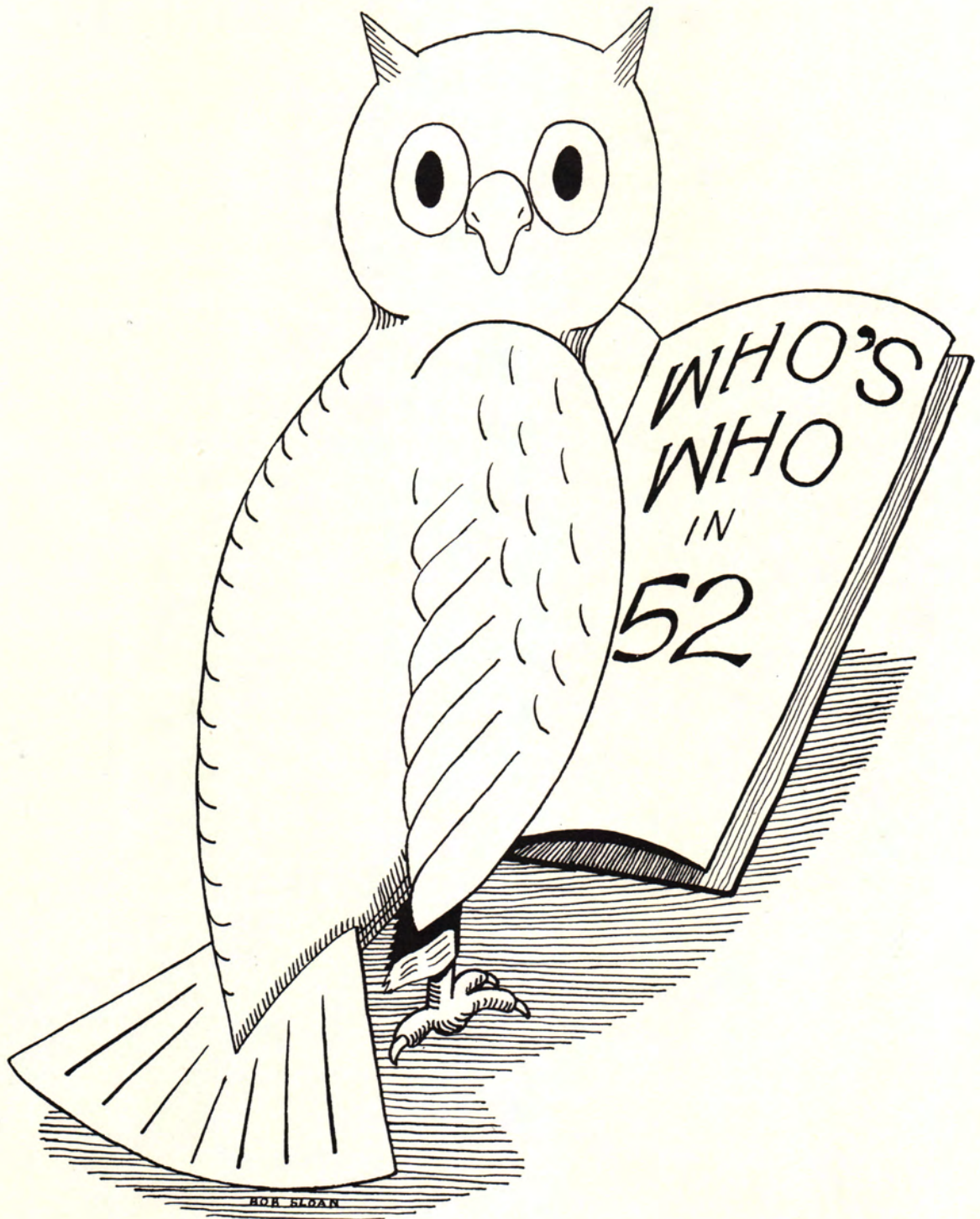
L. D. B. Gamma
Imogene Hunter



1951-52 ENGINEER QUEEN
Lou Gallimore



AGGIE QUEEN
Alice Chastain





Girl Most Likely to Succeed

Carol Jean Able



Boy Most Likely to Succeed

Bill Bennett

Best Dressed Boy

Roger Nail

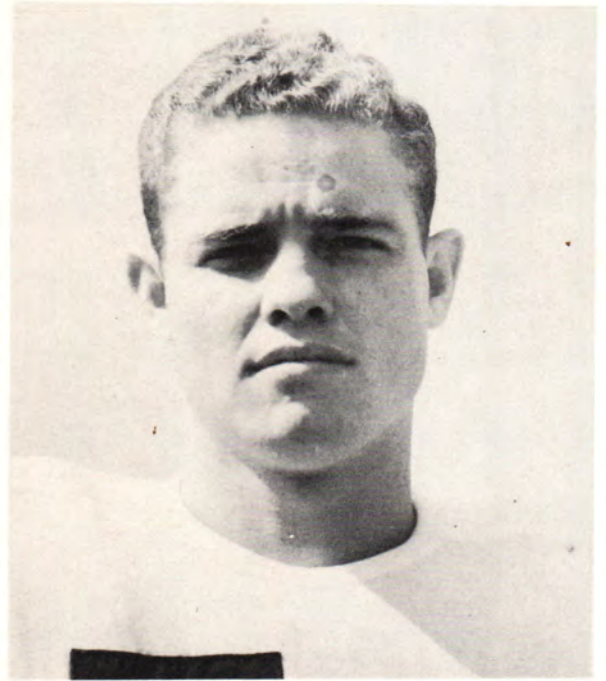


Best Dressed Girl

Ruth Ann Sandmire



Ardys Wolfe



Benny Lee

Most Popular

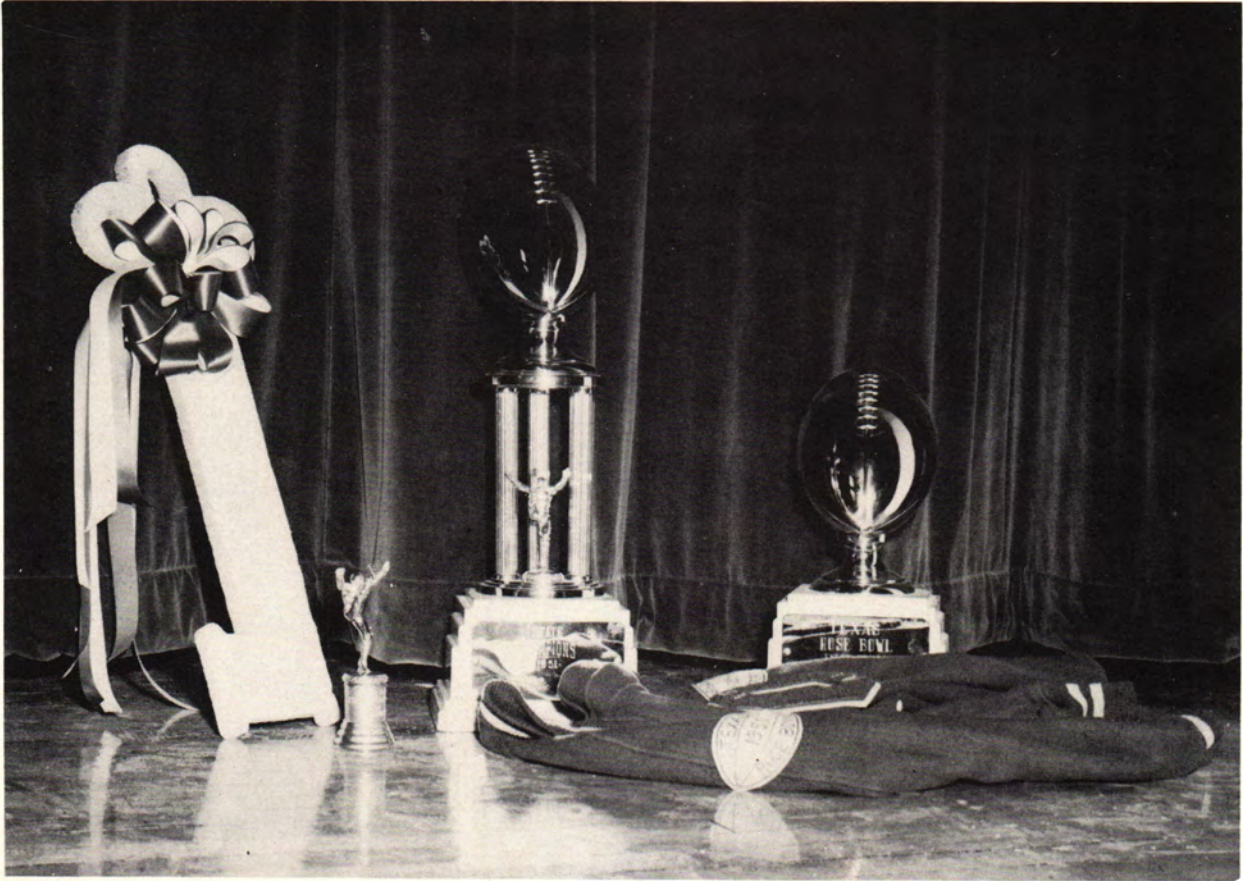
Handsomest and Cutest

Bob Willibey

Imogene Hunter



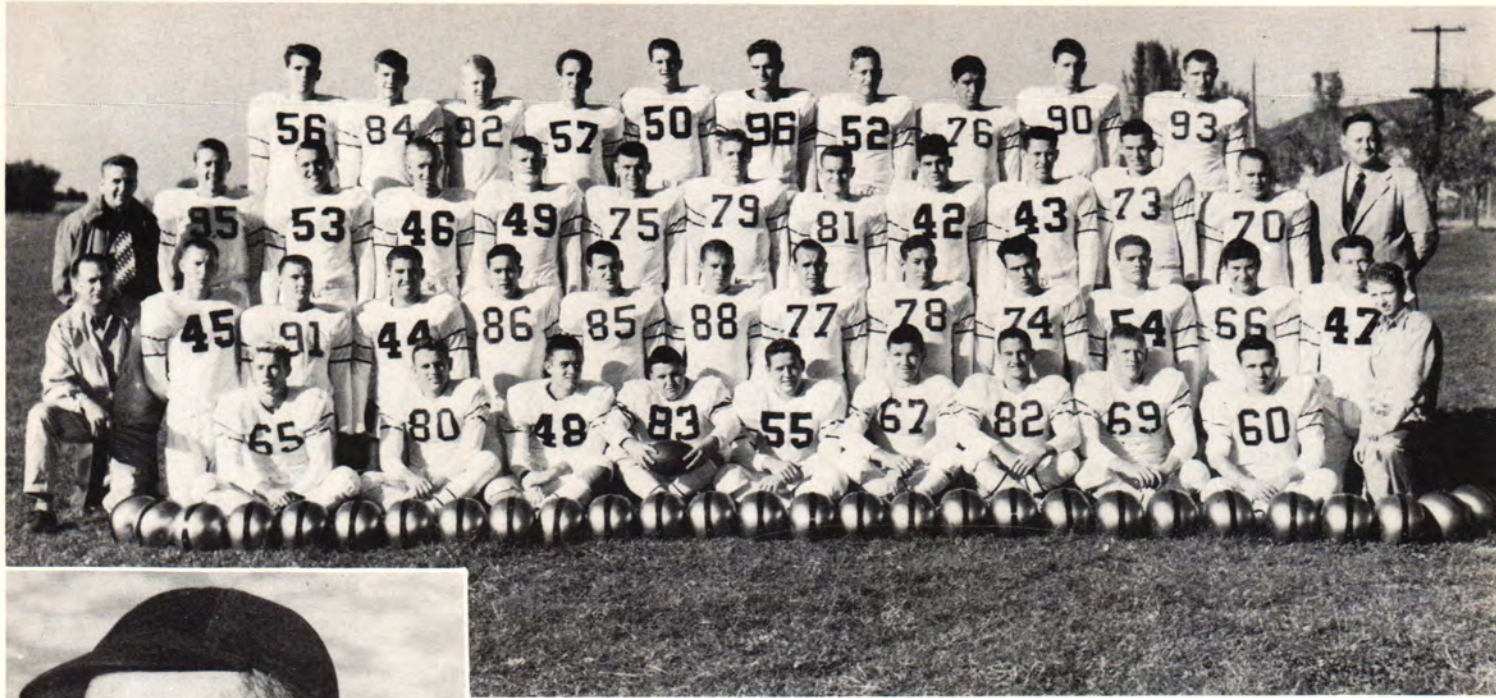
SPORTS



Football trophies won this year are: The key to the city of Tyler, individual state championship trophy, squad trophy for state champions of Oklahoma, Texas Rose Bowl trophy, and the award jackets given at the football banquet.

FOOTBALL SCHEDULE

NEO.....	19	Bacone	0
NEO.....	26	Connor	6
NEO.....	46	Kan. St. Teachers	6
NEO.....	38	State Penn.	12
NEO.....	44	Murray	0
NEO.....	47	Coffeyville Jr.	7
NEO.....	46	Northern Jr.	6
NEO.....	19	Cameron	14
NEO.....	40	OMA	14
NEO.....	13	Kilgore Jr. (Rose Bowl) ..	27



Pictured above is the coach of the undefeated Norsemen, "Red" Robertson. Much credit is due Coach Robertson for his skillful engineering of this year's team.

Above is the 1952 edition of the NEO football team. *First Row:* Bruce Chronister, George Baker, Job Wallace, Ted Moore, Jim Ingram, Ernest Krenz, Kenneth Frisbie, Herman Miller, John Henry Lawrence, and Ken Lawson. *Second Row:* Bud Savage, assistant coach; Bob Kauffman, Tim Harris, Bill Plumb, Ben Haning, Gerry Calhoun, Don Tidmore, Rex Coppedge, Jack Chilton, Jerry Hipps, Earl Boyer, Faymon Holmes, and "Red" Robertson, coach. *Third Row:* Bill Bennett, trainer; Bill Caves, Ruthford Taylor, Paul Scott, Clyde Cole, John Ferguson, Bill Treat, Jack Ward, Jim Rusher, Bill Pace, Bennie Lee, Earl Smith, and Bob Rothrock. *Fourth Row:* Bill Boyce, Bob Willibey, Glen Plumb, Jim Tucker, Bob Baker, Franklin Taylor, Bill Scantlen, James Huxtable, Don Enos, and Mike Blose, manager.



"Sports Publicity and Publicity Manager" was Homa Thomas' title, but he did anything that was needed to help the team.

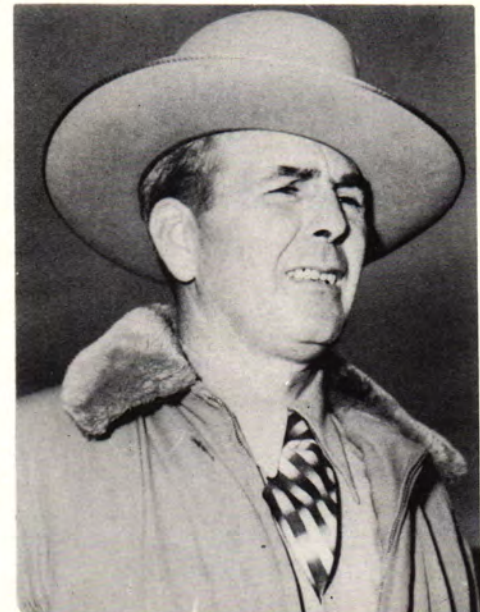


Seen in his quarterbacking chores, above, is co-captain, Bob Willibey. Bob, a very popular boy, was a level headed signal caller.



"Bud" Savage, the gentleman from Texas, was the assistant coach this year. Coach Savage, ex-player and coach, has his hands full coaching the line and keeping a business going downtown.

Bennie Lee, the smiling halfback and the other co-captain of the team, is shown at the left. Bennie was invaluable on offense and defense.





Seen smiling above is George Baker of Afton, Oklahoma. George was an excellent linebacker. So excellent, in fact, that he made all-state doing just that. Along with his defensive work, he played some offense and called defensive signals, proving what a valuable player he was.



Charging above is Paul Scott from Broken Arrow, Oklahoma. AT 210 Paul was a fast guard.



Tim Harris grimaces above as he drives in for a tackle. Tim is from Jacksonville, Florida.



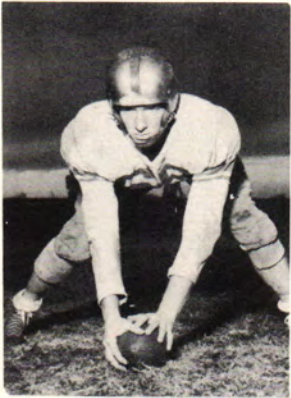
Ken Frisbie from Pitcher, Oklahoma goes down for a down field block, which was his specialty. "Popeye" was one of the All-State crew.

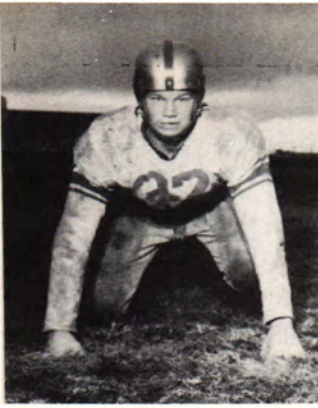


Bill Treat, Wewoka, Oklahoma, is seen above in his defensive stance. Bill is a defensive end for the Norsemen.

At the right is a picture from the Cameron game. Left to right are: Bob Wallace, Jim Ingram, George Baker, John Lawrence, Bill Pace, and Ben Haning. Hughs of Cameron is carrying the ball, and seems to be a little wide-eyed at the faces being made at him.

Below is Bill Plumb of Fort Lauderdale, Florida. Bill was a fine center and blocker. Bill also centered punts and extra points.





Ben Haning stares stolidly ahead as he waits for the offensive team to come to the line of scrimmage.



Bill Caves prepares to center the ball, above. Bill is from Tulsa, and he also plays linebacker.



Seen above threading his way around end during the Murray-Aggies game is Bob Kauffman.



Glenn Plumb glares from under his helmet as he tenses for the snap signal. Glen plays tackle and is from Fort Lauderdale, Florida.



Bill Scantland of Muskogee, a speedy halfback, is seen above. "Muskrat" is said to be the perfect "T" back.



Bob Baker demonstrates a stiff arm he used in making several t.d.'s this year. Bob is from Fairland, Oklahoma.



George Baker comes in from his linebacker spot for a tackle.



Ruthford Taylor, a defensive guard from Fort Pierce, Florida, seen above.



Kenneth Lawson, triple-threat from Vinita, Oklahoma, is seen above punting. Ken made third string All-American.



At the left Bob Baker stretches out of reach and over the goal line during the Murray-Aggies game, which the Norsemen won 44-0.



Charging in for a block is Jerry Hips of Jacksonville, Florida, a tackle.



At left is Ben Haning of Wewoka descending on a Kilgore player. "Let me get my hands on him." Jerry Hipps awaits his chance when the offensive team goes in. Northeastern was beaten by Kilgore Junior College in the Texas Rose Bowl, 27-13.

Ben Lee struggles for that extra yard against Cameron which the Norsemen won 19-14. Few spectators have ever seen a more thrilling game, or a more hotly contested one. Feeling ran high, but the game never got beyond the control of the excellent referees. Truly this was the climax of the season.



Ernie Krenz shows how he warded off blockers on end runs, to become one of the best defensive ends in the state. Ernie is from Lenap.



Fullback Rex Coppedge of Seminole, Oklahoma, streaks for pay dirt. Rex was also a fine linebacker.



Jack Ward, speedster halfback from Locust Grove, charges the camera. He was a very steady, dependable player.



Bob Wallace of Afton charges to perform his duty as a tackle. He did the job so well that he made All-State.

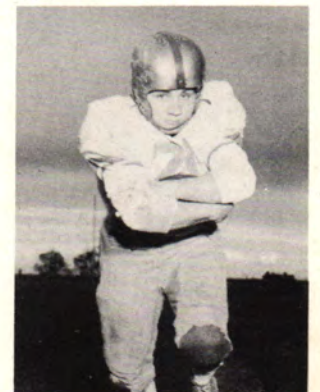


Jack Chilton smilingly tosses another t.d. pass from his quarterback position, at which he made All-State. Signal caller on offense, and pass artist—Jack was invaluable to the Norsemen this year. His best game was against Cameron, when he passed the Norse to a quick lead, and then generated it through two scoreless quarters.

Don Tidmore, a fine pass-catching freshman from Holdenville, Oklahoma, grimaces into the camera.

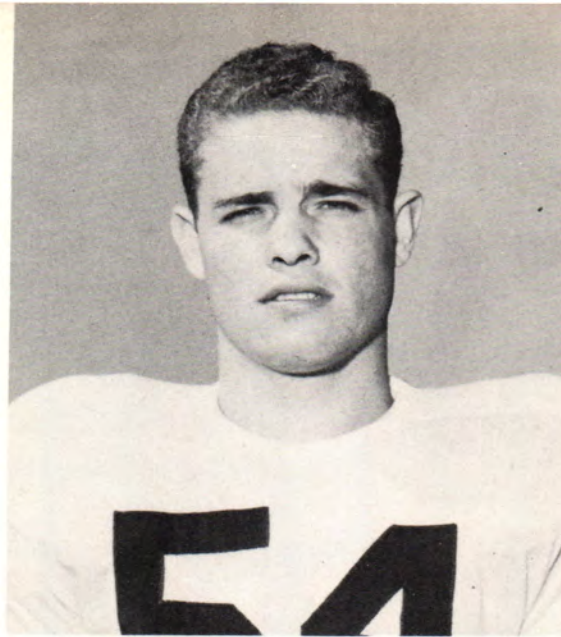


Stocky, versatile Don Enos of Seminole can't manage a smile for all his moral building the rest of the time.





Above is Jack Chilton, quarterback, from Skiatook. Jack, a sophomore, was an excellent passer and signal caller.



Ben Lee, pictured above, is another all-stater. As a halfback, both on offense and defense, Ben was a great asset to the team. His home town is Treece, Kansas. Ben was the most popular man on the campus in the Who's Who selections.



John Ferguson, Tulsa, is number 85, pictured above. A quick starting, shifty back, John was invaluable.



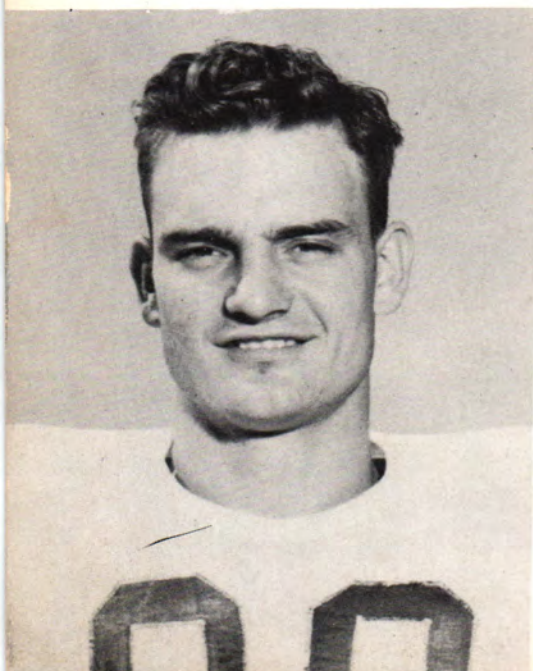
Jim Rusher with his educated toe in action is seen above. As a fullback and extra point kicker, Jim was handy to have around.



Ted Moore, speedy end from Tulsa, is seen above. Ted was an excellent pass catcher and runner.



Gerry Calhoun, speedy freshman guard from Wewoka, charges above.



At the left is Ernest Krenz, defensive end, and his running mate Jim Ingram at right. Both of these boys made All-State at defensive end. They were one of the big reasons the Norsemen had such a wonderful defensive record. Ernie is a Lenapah man, and had no previous experience until the time he came here. Jim played at Henryetta, where he met his wife. During the football season they became the parents of twin boys.





Bob Wallace, at left, also made All-State this year as a tackle. Bob is from nearby Afton, where he played football for three years. He is the only other family man on the squad, and he has a blonde daughter. When aroused "Whitie" was the most ferocious defensive man on the team.

*Library
Northeastern A. & M. College
Miami, Oklahoma*



Seen capturing the pigskin is Herman Miller, a defensive tackle from Nowata. "Chief" is just plain tough.



Bill Pace, defensive halfback and quarterback from Treece, Kansas, was a very valuable player for the Norsemen this year.



A strange sight above is John "Tim" Harris and Jerry Hipps, two Florida tackles, ankle deep in snow. Although Jerry, on the right seems to be a little dubious, Tim is enjoying himself immensely. These are two of the six Florida boys who saw snow for the first time.

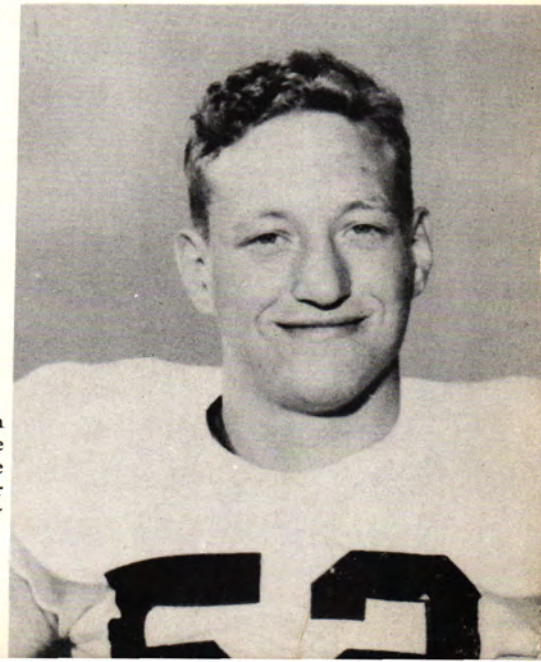


Jim Tucker, Broken Arrow guard, was a rock in the line all year. He is seen above in his classic stance.



Above is Earl Smith, a solid little guard from Miami. Earl was also a linebacker of no mean ability.

Kenneth "Pappy" Frisbie is seen at the left in a very natural pose. Ken made All-State at the right tackle position, because of his intent line blocking and down field blocking. He is popular on the home campus but not so well liked by the opposing teams.





Sidestepping above is Bob Kauffman of Nowata, Okla. Bob was a wonderful offensive end and runner.



Bill Boyce charges above. Bill was one of the fastest boys on the squad, and a fine ball carrier.

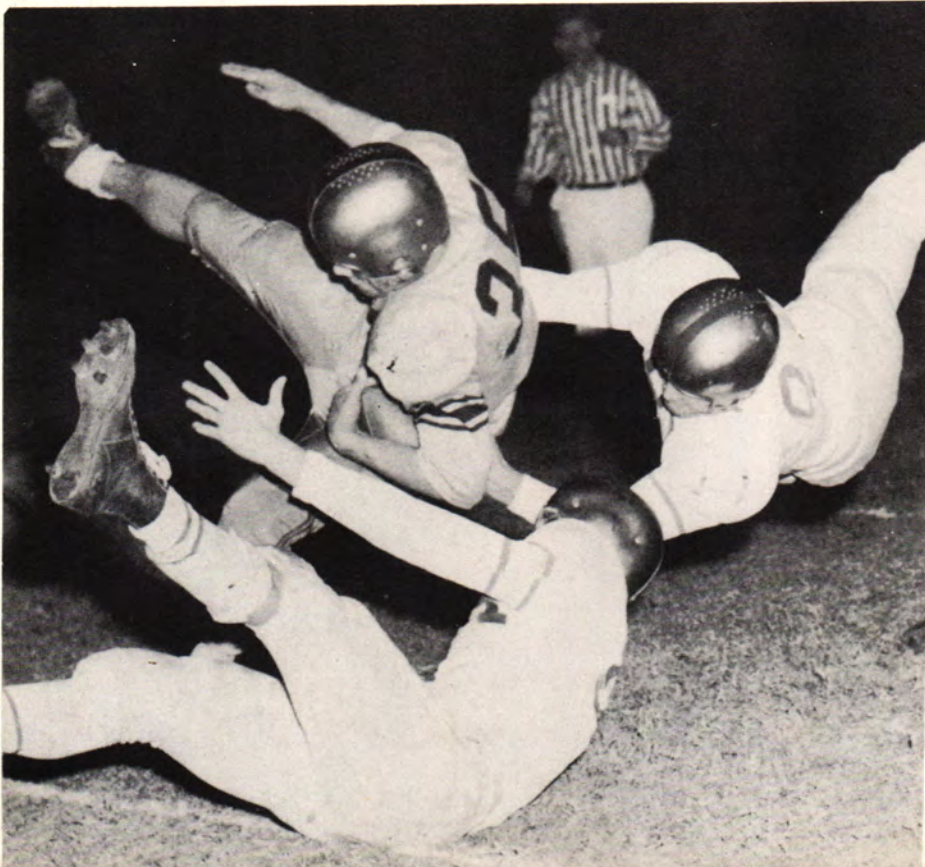
Pictured at right is the Little All-American, Big Ken Lawson. Ken was the fullback, punter, and often passer for the Norsemen this year. He was coach Robertson's big gun, and was the most feared player on the State Championship squad. In addition to third-string All-American quarterback, he also made unanimous All-State.



Leaping for the ball he so seldom got hold of, is Jim Ingram, a wonderful defensive end. Jim made All-State, and deserved the tribute to his ability.



Below is pictured a fine piece of defensive work on the part of George Baker, All-State linebacker, and Rex Coppedge. This pair teamed up often against Cameron, as they did below. Everybody seemed to have their feet in the air except the referee.



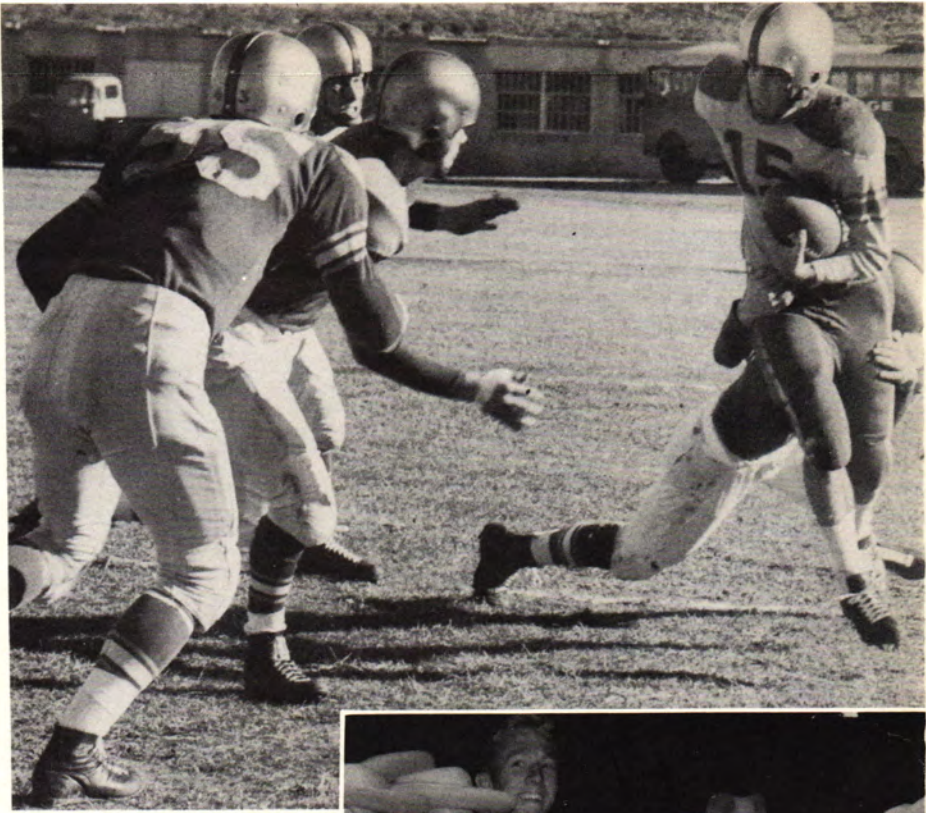
Above is undoubtedly, the strongest boy on the squad. James Huxtable was a fine, dependable guard of the first order.

Bob Rothrock, of Seminole, Oklahoma, is seen below in his duties as a half-back. Bob was excellent on offense and defense.





Above is Bruce Chronister, sophomore tackle. Bruce is from Shidler and is a game hand.



In the upper right is a picture of the Tyler Rose-Bowl Game. Bob Kauffman (95), Jerry Hipps, Jack Chilton, and Bob Baker (Tackling) converged on Kilgore's Reynolds during a punt run-back.



John Lawrence is seen above in the act of stealing another pass. John was a spark plug at safety.



At the right are the Plumb brothers from Florida. Bill, at left, seems to be a little rueful, but Glen is enjoying himself thoroughly. The football team was met at the hotel by the Rangerettes, a girls marching group from Kilgore. The whole group was treated with Texas hospitality. At a special meeting the football players were given watches and the coach was given the key to the city



Above is Faymon Holmes, all-state linebacker, from Lake Wales, Florida. Faymon was a ballhawk deluxe.



Franklin Taylor scoops up a fumble in his job as defensive guard. "Pancho" is from Nowata, Oklahoma.

At right is Clyde Cole, sophomore end from Chickasha, Oklahoma. Clyde was a fine pass receiver and blocker.



BASKETBALL

The basketball squad is pictured below: John Henry Lawrence, Bob Smith, Jack Beghey, Earl Boyer, Earnest Krenz, Don Tidmore, Howard Wagner, Bob Kauffman, Bill Scantlin, Bob Willibey, Virgil Mayabb, David Claxton, and Jack Chilton.



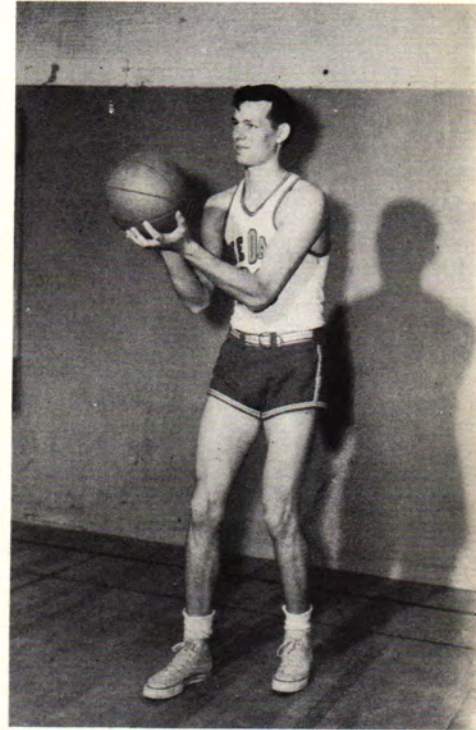
At left is Bob Kauffman, Bob is an all-round athlete, since he is an end on the football team, plays on the basketball team, and baseball team.

Below is Don Tidmore of Holdenville. Don was a strong rebounder, and sharp post man.

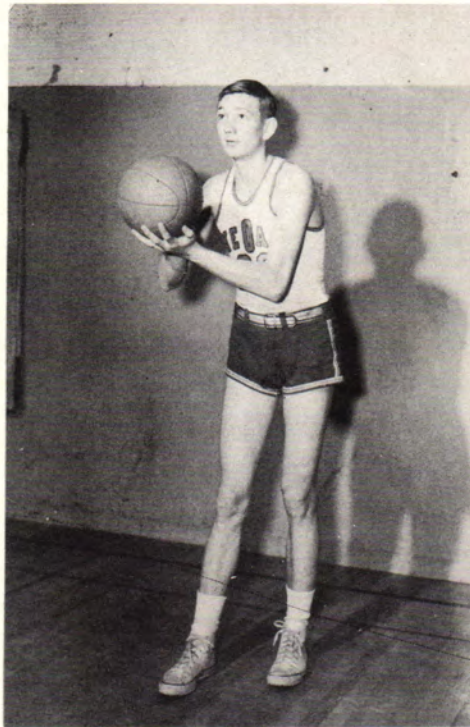


Above is hard-hitting, rebounding Ernie Krenz. Ernie jumped center and was usually given the tallest opposing man, a tribute to Ernie's toughness.

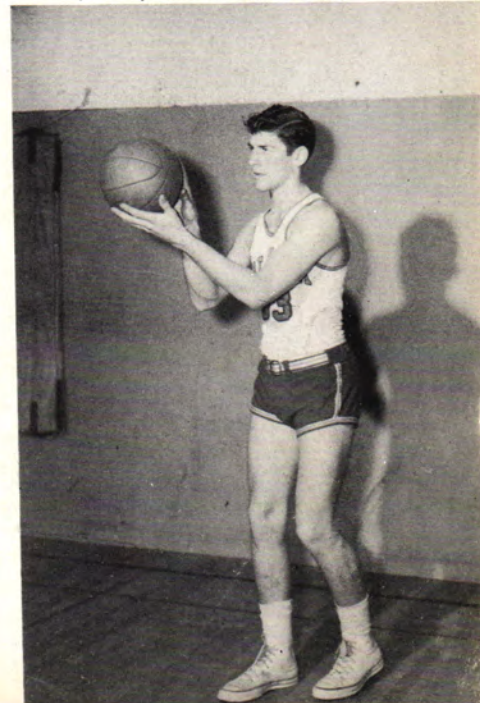
Earl Boyer is seen eyeing the basket in a typical pose. Earl, a fine defensive man and sharpshooter, is a freshman.



Bob Willibey gazes angelically at the basket before shooting. Bob was a fine allround player, and very valuable in a tight spot.

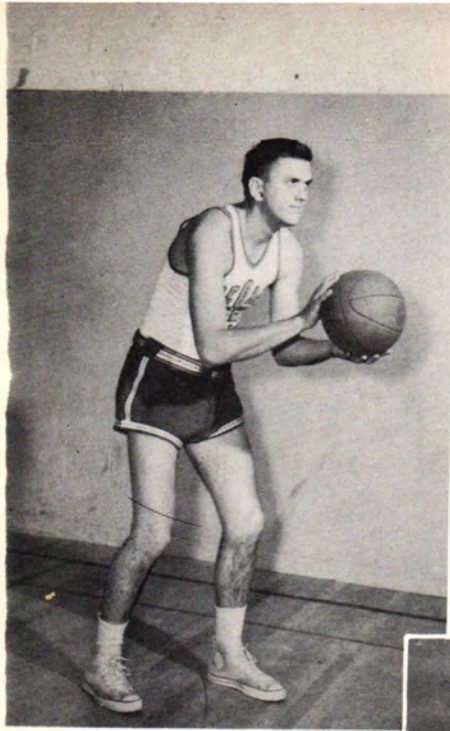


Below is Howard Wagner, a dark horse who arrived late for the season, but *still became a very handy man to have around.



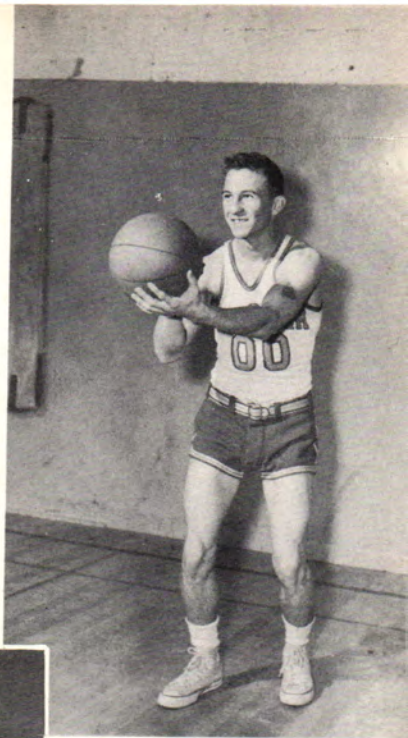
Long, thin Jack Begely zeros in above. Jack developed into an exceptional player.



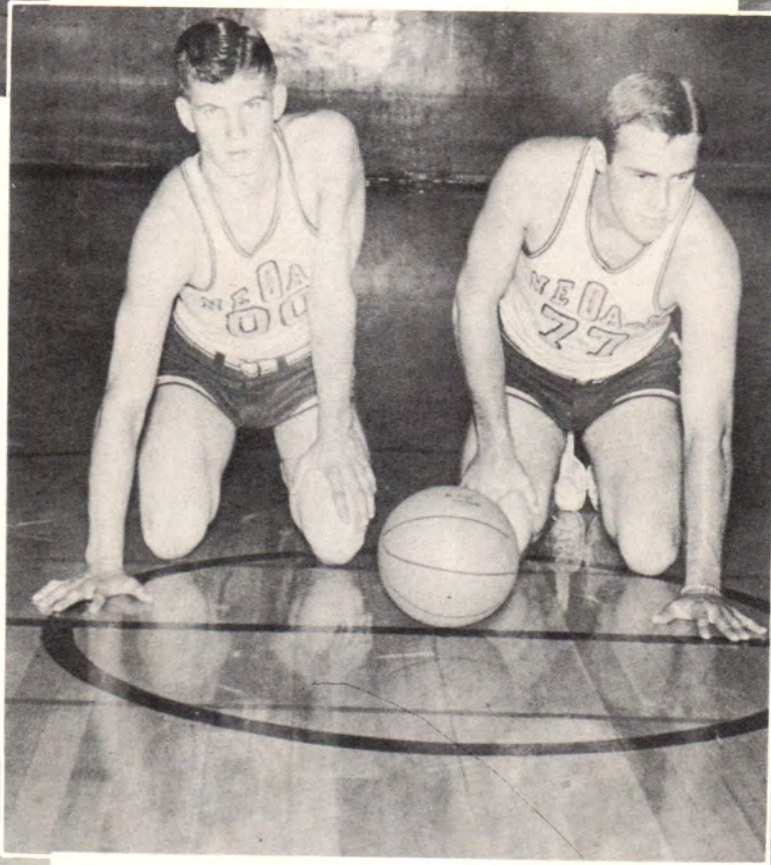


Bob Smith, highschool All-stater, is seen aiming above. Bob was a dead shot with a roundball, and his presents will be missed next year.

Bill Scantlin grins at the basket, as if to say, "this one's as good as in." And he was usually right! Bill was a fine fastbreaking forward.



George Baker (not in the group) and Bob Kauffman seem to be testing the new gym floor. "Think it's too slick?" "Naw, but it sure is cold."



Jack Chilton puckers up for a shot, and the chances are he'll hit. He was also an expert defensive man.

Virgil Mayabb, the ball handler and long shot artist, smiles his confidence, and well he might. He had a wonderful shot-made average.



Not shown is John Henry Lawrence, who was the rebound champion and center of the team. He was often a rallying force when the chips were down. Much credit is due "Long John" for his fine work.

"O" Club



Members of the O Club are Jack Chilton, Bob Willibey, (President), Jack Begley, James Huxtable, Bill Treat, Bob Kauffman, John H. Lawrence, Faymon Holmes, Bill Plumb, Ruthford Taylor, Bill Scantlin, Earl Boyer, Bill Bennett, Glenn Plumb, Jim Rusher, Jack Ward, Bob Baker, Paul Scott, Clyde Cole, Ed Loop, Jim Tucker, Gerry Calhoun, Bill Caves, Bob Rothrock, Don Enos, John Ferguson and Rex Coppedge.



Smiling Bob Willibey, President of the O Club, is seen above. Benny Lee was president first semester.



At left Benny Lee crowns Ardy Wolfe Football Queen.

INTRAMURALS



*I
n
d
e
p
e
n
d
e
n
t
s*

Champions of intramural play are the Independents with coaches Ferree and Melvin Shipley are seen above. Ken Frisie, David Claxton, Don Enos, Mike Blose, Bill Plumb, and Jack Ward are members of the team. Jim Ingram, and Ronnie Butterfield are not pictured.

	W	L	Pts.	Op.
Independents	9	1	384	283
Business Club	8	2	399	303
Engineers	7	3	386	355
Phi Sigs	3	7	388	429
Aggies	3	7	378	437



The second place Business Club is seen above. It is composed of John Smith, Bob Wiley, Billy Allen, Ben Cambron, Leroy Scoles, John Ferguson, Jack Elgin, Coach Homa Thomas, Bob Rothrock, Jerome Haney, and Toby Wise.

Business Club



Engineers

The Engineers third place team is composed of Chuck Childers, John Tibbs, Rex Kimmel, Bill Dareing, Charles Gibson, Coach "Curley" Need, Verl Pharis, Willis Griffin, and Otis Harlan.

Aggies

At right is the Aggie team made up of Jim Rusher, Tom Lanum, Bob Gerdes, Conrad Hanan, Coach Ball, Jack Thomas, Allen Motter, Bob Frazier, and Darrell Wallis.



Phi Sigs

Fourth place Phi Sigs are Coach Theising, Vance Vanderburg, Rene Pally, Gene Robbins, Jerry Clopton, Ted Moore, and Salo Rivas. Not pictured are Dick Gardner, Bill Whipkey, and Gerry Calhoun.



Girl's Phys. Ed.



Glenda Hardy, Ladoris Peterson, Phyllis Denney, Margaret Harrison, Miss Louise Granlee (Director), Carol Ward, Priscilla Coker, Pat Neel, Margaret Marks, Ruth Williams, Frances Hatfield, Mary Weisinger, Clo Agnew, Vera Williams, and Maryetta Loveall.

Seen practicing their forehand are Bette Boyer, Pauline Williams, and Betty Davis. Coaching is Miss Granlee.



Basketball players, deluxe are Lorene Crow, Dortha Abernathy, Imogene Hunter, and Martha Wheeler. Some very excellent talent developed in physical education this year, was Bette Boyer in tennis, Imogene Hunter in basketball, and Mimi Khalili in badminton.





Yearbook Staff



The staff includes — *First Row:* Bob Sloan, Gerry Calhoun, Ted Moore, Harley Pitcher, Bob Hammons, Fernando Cruz, Homa Thomas (sponsor). *Second Row:* C. C. Ferree (sponsor), Dan Hensley, Henry Van Beber, Bette Boyer, Barbara Graham, Pauline Williams, Margaret Marks, Cloeta Agnew, Pat Neel, Martha Wheeler, Imogene Hunter, Mary Weisinger. *Third Row:* Lorene Crow, Ardys Wolfe, Pat Kiethley, Shirley Carlin, Shirley Sanders, Betty Farris, and Priscilla Coker.

TO THE VIKING STAFF:

Our congratulations and thanks are hereby extended to all members of the Viking staff for 1952. You have spent many long hours of extra work in producing this college yearbook and we are truly grateful.

Bruce G. Carter



Dan Hensley, business manager; Bette Boyer, Shirley Sanders, editor-in-chief; Gerry Calhoun, sports editor are busy at work.

Student Council



Fernando Cruz Vice-President



Bill Bennett President



Carol Jean Able Treasurer



Alice Chastain Secretary



Seated: Frances Hatfield, Sigmas; Pat Neel, BSU; Danny Hensley, Phi Theta Kappa; Jack Chilton, O Club; Carol Jean Able, Treasurer; Fernando Cruz, Vice-President; Bob Whitchurch, Unattached. *Standing:* Charles Childress, Boys' Dorm; Bob Kraybill, Engineers; Bill Plumb, Freshmen; Dennis Doty, Sophomore; Vance Vanderburg, Phi Sigs; Bob Hammons, Press Club; Roger Nail, Boys' Dorm; Glenda Hardy, Business Club; Naomi Jo Harp, IRC; Shirley Sanders, Girls' Dorm; Lorene Crow, Girls' Dorm; Joyce Waldron, Sophomore; Bill Annos, LDB.



Verl Pharis
Editor

mechanics, drawing, air conditioning and refrigeration will in the future be called the appliance divisions. These divisions include radio and television, engineering and re-



Ardys Wolfe
Society Editor

Engineer,
Red Snakes

Patrick must have had an adventuresome and romantic life, at the age of 16, he was captured by pirates from Ireland to whom they later took him. They made him a slave and the six sons of attending the flocks of the notorious chieftain made him a devoted Christian.

escaped to France and became a monk. After some time he returned to Ireland and is regarded as one who "found the path and left it a path."

ay, this holiday is a day of merriment. The "CEO campus" it is a day of the Engineers' dance.

me Irish engineers discovered that this noble engineer. No one knows this discovery was made. Nevertheless, the annual day at Northeastern makes a fact quite certain.

American custom, quite prevalent among grade and high school students, is to pinch anyone who does not wear green on March

and high schools, Synar

tests are set up for livestock, dairy, poultry, and crops. All contestants will comprise a team, he said. Contest results will be announced and awards presented at the Agriculture Achievement Ban-

Judgers Livestock

and chapters may be held in each contest, and the contestants will comprise a team, he said. Contest results will be announced and awards presented at the Agriculture Achievement Ban-



The staff busy at work

Caradine Hooton



Dan Hensley
Advertising Manager

Dr. Hooton's talk, Martha Hooton, daughter of Douglas Pay-

Plans Fund Campaign

Bill Bennett, chairman of the station drive which will be held on April 14, 15 and 16. The drive is more convenient for students, the Red Cross will donate all its equipment to the campus on one day of the drive.



Carol Jean Able
Associate Editor



Shirley Sanders
Associate Editor



Bob Hammons
Radio Editor

connected with Chemical Market development."

Former Student Returns
Kenneth Cantwell, former student at Northeastern and now a chemical engineer for Phillips, will address the Engineers on "The Industrial Aspects of Chemical Engineering."

Dr. Paul A. Cushman, professor of chemical engineering at Oklahoma State University, will speak at 7 p.m. Exhibits of chemical engineering will be on display in Oklahoma

in does consult engineering and mechanical engineering at Oklahoma City. "This is of interest to me," he added.

Alexander, chairman of the school of chemical engineering at Oklahoma University, will talk on the subject "Research on Vapor Phase Reactions of Light Petroleum Gases," at 2 p. m.

The green of Ireland will appear in the form of jackets which will be worn by the organization's members, decorations in the gymnasium, and on the queen's throne.

Music by the Tri-Staters
Music by the Tri-Staters, featuring Joplin, will set the rhythm for the dance which will start at 8:30 p.m. Formal dress is optional, according to Tom Binkley, Engineer



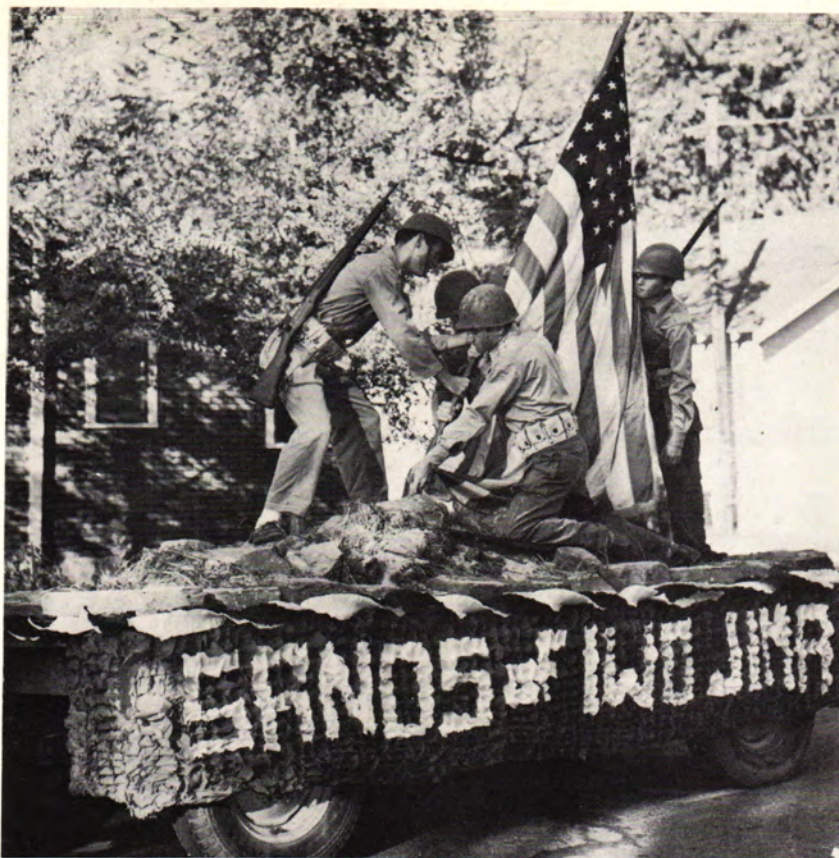
Sherman Cole
Sports Editor

6th Annual
Sav; Ju
Reig



John Barlow
Circulation Manager

magical 8-a-ill 16-a



Press Club

OFFICERS

Shirley Sanders	President
Davie Barger	Vice-President
Barbara Thomas	Secretary
Pauline Williams	Treasurer

The Press Club won second in the Homecoming parade.



Standing: Verl Pharis, Gene Waldeck, Don Hall, Howard Hudson, Danny Hensley, Sherman Cole, John Barlow, Bob Hammons, Ray Vanderburg, sponsor. *Seated:* Pauline Williams, Ardys Wolfe, Lorene Crow, Shirley Sanders, Carol Jean Able.

Sigma Iota Chi

Sigma Iota Chi Sorority was founded in 1903 with its first chapter in Alexandria, Louisiana. There are now thirteen active chapters located in nine different states. Tau chapter was organized in 1928.

Many are the honors and accomplishments accorded Tau chapter this year. Mary Weisinger, representing Sigma Iota Chi and Phi Sigma Nu, was Homecoming queen. Dale Robertson, 20th Century Fox star, then selected Ruth Ann Sandmire as the queen to reign over the Viking. Ruth Ann was also selected best-dressed girl on the campus.

The annual Christmas formal dance held at Spartans December 22, was the climax of the first semester activities.

- Worthy Matron Bette Boyer
- Worthy Protector Ruth Ann Sandmire
- Worthy Scribe Jane Bedell
- Worthy Keeper of the Treasury Sharyn Wiley
- Sponsor Mrs. John Thiesing

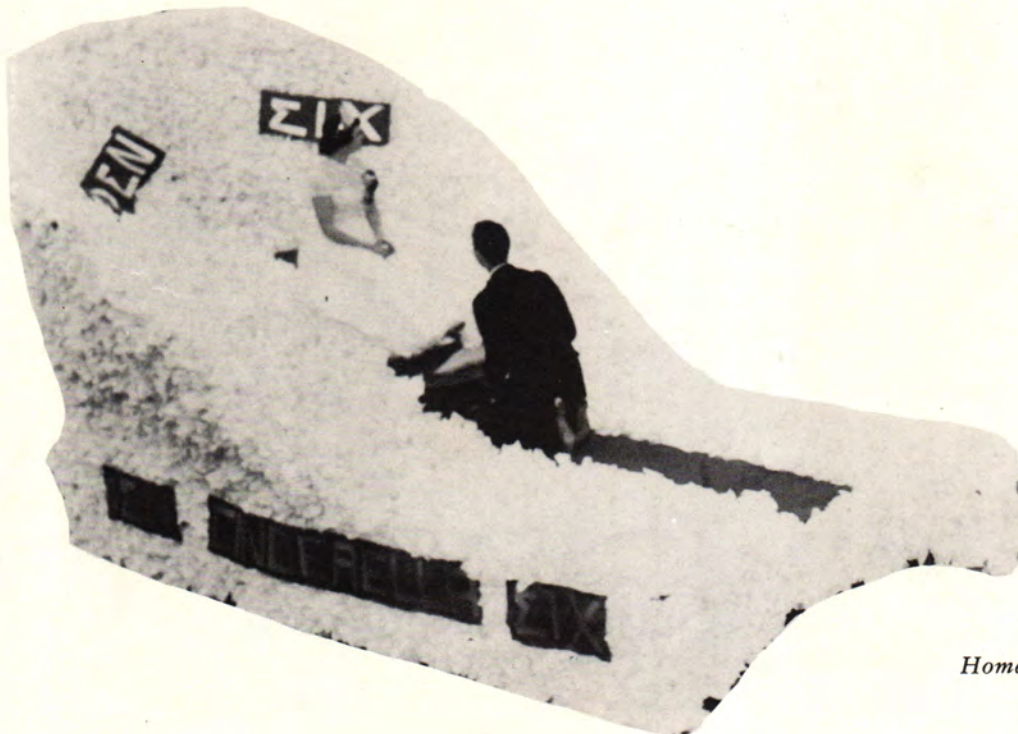


Seated: Margaret Ann Marks, Sharyn Wiley, Jane Bedell, Frances Hatfield, Bette Boyer. Standing: Maryetta Loveall, Ruth Ann Sandmire, Cloeta Agnew, Mrs. John Thiesing, Mary Weisinger, and Carol Ward.



Phi Sigma Nu

From left to right: Rene Pally, Mr. John Thiesing, Richard Bartlett, Fernando Cruz, Allen Cathay, Eddie McGinnis. *Second Row:* Charles Scott, Jack Ward, Henry Van Beber, David Blankenship, Sherman Cole, Dick Gardner, Charles Pendergraft. *Third Row:* Charles Gibson, Salomon Rivas, Vance Vanderburg, Bill Whipkey, Brandon Atkins.



Homecoming float.

Eta Epsilon Gamma

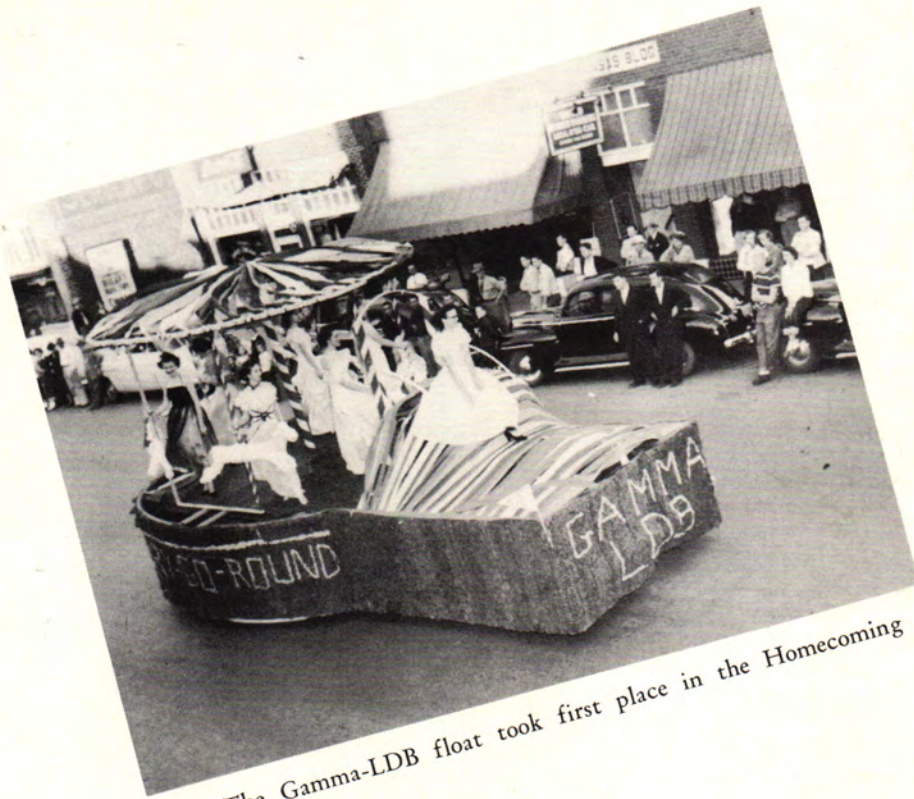


*Standing: Betty Farris, Joyce McGuirk, Carolyn Elam, Carol Jean Able, Doris Mashburn.
Seated: Almeda Nicks, Ruth Williams, Glenda Hardy, Pat Neel.*

Standing: Wilma Parker, sponsor; Doris Mashburn, Almeda Nicks, Betty Farris. Seated: Glenda Hardy, Carol Jean Able, Pat Neel, Carolyn Elam, Ruth Williams.



Eta Iota Tau



The Gamma-LDB float took first place in the Homecoming parade.



Seated: Tom Binkley, Bob Hendrickson, Ernest Krenz, Jack Thomas, John Laue. Standing: Verl Pharis, Willis Griffin, Bill Annos, Tom Harney, Bob Whitechurch.

Aggie Society



DAIRY JUDGING TEAM: Freddie Payton, Bob Frazier, Linvel Helton.



AGGIE SOCIETY: Bill Richardson, Connie Legako, Clement Chastain, Gayle Brock, Don Babst, Glenn Brumback, Delbert Black, Ernest Krenz, Conrad Hanan, Jim Rusher, Jim Smith, James Shope.

Denzil Corn, Charles Hukill, Jeff Harris, Dale Rice, Charles Guthrie, Don McCrackin, Jack Thomas, Darrel Wallis, Bill Kline, John Laue, Thomas Lanum, Bob Frazier, Linvel Helton, R. L. Thomas.

Richard Price, Bill Dunbar, Allen Motter, Bob Gerdes, Orvin Farmer, Alice Chastain.



OFFICERS: Bill Dunbar, sergeant-at-arms; Linvel Helton, reporter; Bob Gerdes, student council representative; Dale Rice, vice-president; Bab Frazier, president.



LIVESTOCK JUDGING TEAM: Gayle Brock, Jim Rusher, Charles Guthrie, John Laue, Dale Rice, Coach Harry Synar, Darrel Wallis, James Shope, Thomas Lanum, Allen Motter, Bill Dunbar.



FORT WORTH TEAM: Dunbar, Shope, Guthrie, Laue, Synar.



POULTRY TEAM: Ernest Krenz, Don Babst, Connie Legako, Gayle Brock, Coach Marvin Wood.



CROPS TEAM: Coach Lem Ball, Clement Chastain, Denzil Corn, Tom Harney, Jeff Harris.

Engineers Society



Ed McFall, Dick Curry, Bill Dareing, Rex Kimmel, Gene Waldeck, Walling Wallingford, Dale Lynch, Charles Childress, George Webb, Robert Hendrickson, Bobby Kraybill, and Abdula Suffani.

Charles Scott, John Tibbs, Tom Binkley, first semester vice-president and second semester president; Joe Johnson, Clell Searce, Charles Thomas, Jim Suddarth, first semester president; George Lewis, Phillip Smith; Gerry Calhoun, Roy Radschwiet, Melvin Kaup, Mike Blose, Dennis Kelsey, Solomon Rivas, and Fred Pitts.

Dick Bartlett, Charles Pandergraft, Bob Sloan, Bob Lowe, Fernando Cruz, Paul Bross, John Gruenburg, Jerry Turner, second semester vice-president; Kenneth Frisbie, and Glen Plumb.

Ted Wiehe, sponsor; Otis Harlan, Max Mullin, Billy Goodman, Jack Morgan, Rene Pally, and Oren E. Need, sponsor.

The Engineers Society is one of the largest and most active organizations on the campus of Northeastern Oklahoma A & M. The society was organized in September, 1946, for the purpose of acquainting students of engineering and industrial arts with actual engineering and shop practices.

Under the guidance of Oren Need and Ted Wiehe, sponsors of the organization, the Engineers have made several inspection trips through actual engineering projects and plants to supplement their academic studies.

The highlights of the Engineers' activities was the annual St. Patrick's day festivities. Engineering instructors from the Universities of Oklahoma and Missouri and Phillips Petroleum Company at Bartlesville, Oklahoma, delivered educational lectures and several engineering demonstrations.

The Engineers' formal dance was held March 14, in the college gymnasium.



Elizabeth McInnes
Queen



Business Club



Standing: Joe Langley, Nelson Devers, Bob Wyly, Allen Cathey, Jack Elgin, Billy Allen, president; Roger Nail, Sharon Davis, Shirley Sanders, Homa Thomas, sponsor.

Naomi Jo Harp, secretary-treasurer, Shirley Simone, Imogene Hunter, Ruth Williams, Glenda Hardy, Student Council Representative; Sue Warbinton, Frances Pineda.

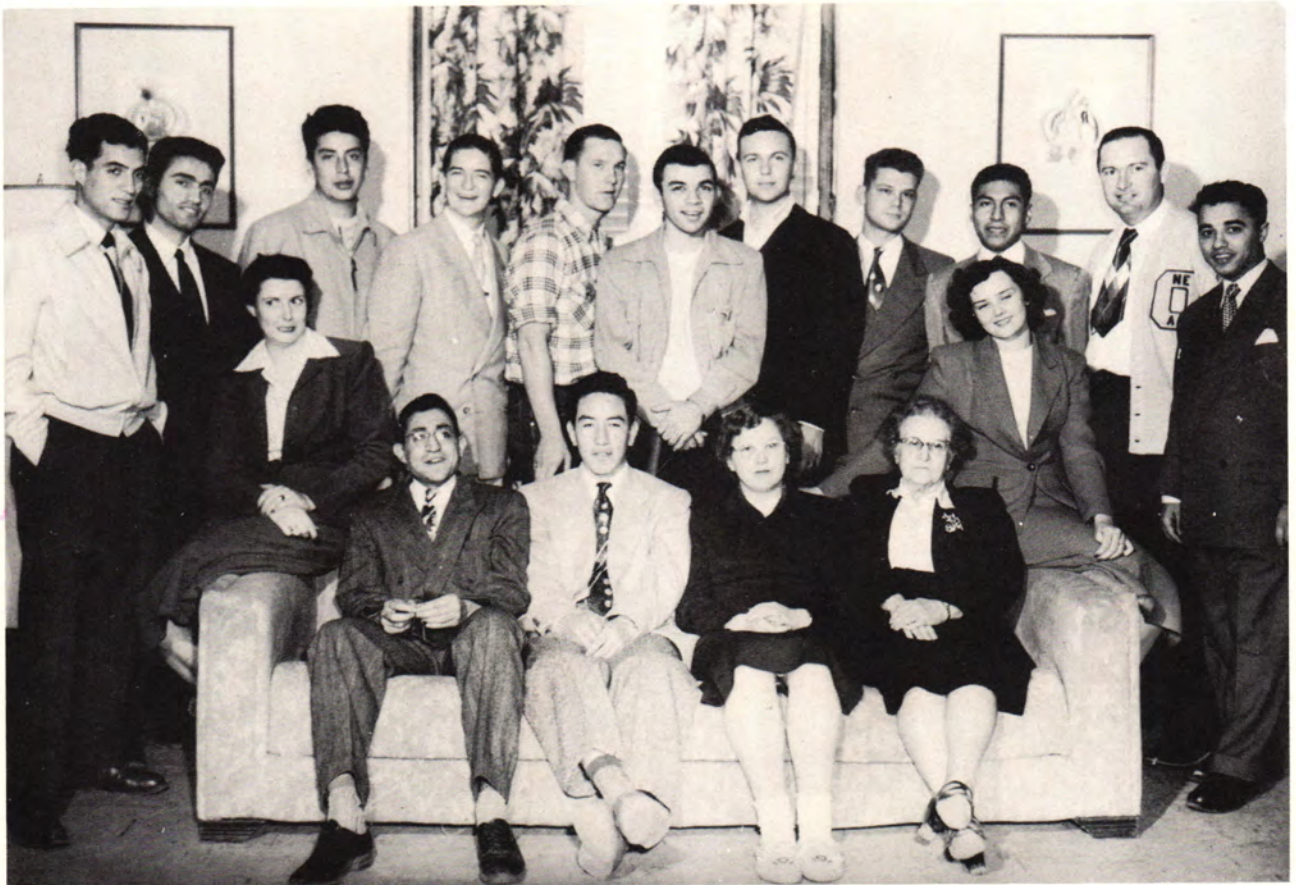
The International Relations Club

OFFICERS

President David Weatherford
First Vice-President Alice Chastain
Second Vice-President Rene Pally
Secretary and Treasurer Fernando Cruz



Mario Saenz (Guatemala), Dari Sehi (Iran) Salomon Rivas (Bolivia).



First Row: Abdul Amir Johi Al Hummadi, Ezatollah Kohanim, Salomon Rivas, Bill Goodman, Bill Caves, Bill Annos, Harley Pitcher, David Weatherford, Rene Pally, Bill Bennett, H.M.A. Abbass. *Second Row:* Alice Chastain, Jalal Jamassebi, Fernando Cruz, Naomi Jo Harp, Miss Virginia Lindsey.

Phi Theta Kappa



NEW MEMBERS: Frances Hatfield, Joyce Waldron Hazel Denton, Pauline Williams, Malka Greenvald. *Back Row, left to right:* Carlos Gliksman, Lorene Crow, Doris Mashburn, Miss Faye Vann, sponsor; Neva Wasson, Carol Joyce Ward, Alice Chastain.



OLD MEMBERS, *back row, left to right:* Jim Suddarth, George Webb, Bobby Kraybill, Paul Bross, Bob Hammons, Bill Bennett, Fernando Cruz. *Front Row, left to right:* Roy Doty, first vice-president; Carol Jean Able, secretary; Shirley Sanders, treasurer; Miss Faye Vann, sponsor; Verl Pharis, president; Dan Hensley, second vice-president.

Aggiettes



Standing: Mabel Speaker, sponsor; Ruth Williams, Glenda Hardy, Neva Wasson, Norma Jean Harrell, Naomi Jo Harp, Phyllis Denney, Margie Edwards, Ladoris Peterson, Fawn Croft, Joyce Waldron, Cloeta Agnew, Priscilla Coker, Patricia Keithley, Martha Wheeler, Doris Mashburn, Virginia Drake, and Dora Hopper. *Seated:* Dortha Abernathy, Betty Farris, Vera Williams, Margaret Harrison, Lorene Crow, president; Ardys Wolfe, Pauline Williams, vice-president; Carolyn Elam, Joyce McGuirk, Shirley Sanders, Alice Chastain, secretary-treasurer, and Mary Doty.

The Aggiettes organization was founded at this college in 1946. This sister organization to the Aggie society promotes better standards of home life with its members. Its main goal is to learn to live better today in order that our lives and those of our families may be better tomorrow. Mrs. Mabel Speaker is the sponsor of the group.



F. T. A.

OFFICERS

Joyce Waldron	President
Lurita Silence	Vice-President, First Semester
Marlene Knox	Vice-President, Second Semester
Malka Greenvald	Secretary
Harley Pitcher	Treasurer
Margie Edwards	Student Council Representative
Margaret Harrison	Librarian
Almeda Nicks	Songleader
Carol Able	Publicity Director
Mrs. Etta R. Bruton	Sponsor
Miss Alberta Waters	Co-Sponsor

The Robert M. Hutchins Chapter of the Future Teachers of America was organized on the campus in December 1950. It is affiliated with the National Education Association and the Oklahoma Education Association. The club is designed to acquaint college students with the requirements for teaching certificates and the opportunities in the field of education. It also affords those with a common interest an opportunity to enjoy the fellowship and social meetings that such a club can offer.

The Chapter participated in several events on the campus this year. Its activities included the sponsoring of a radio program and an assembly to emphasize "Education Week", November 11-17, 1951; the building of a float, "The Wall", for the Homecoming Parade; and the entering of Alice Chastain and Malka Greenvald as candidates for Homecoming and Viking queens.



Standing: Malka Greenvald, Vera Williams, Neva Wasson, Bill Bennett, Margaret Harrison, Margie Edwards, Carol Jean Able.
Seated: Miss Alberta Waters, Almeda Nicks, Joyce Waldron, Marlene Knox, Harley Pitcher, Mrs. Etta R. Bruton.

Girls' Dormitory

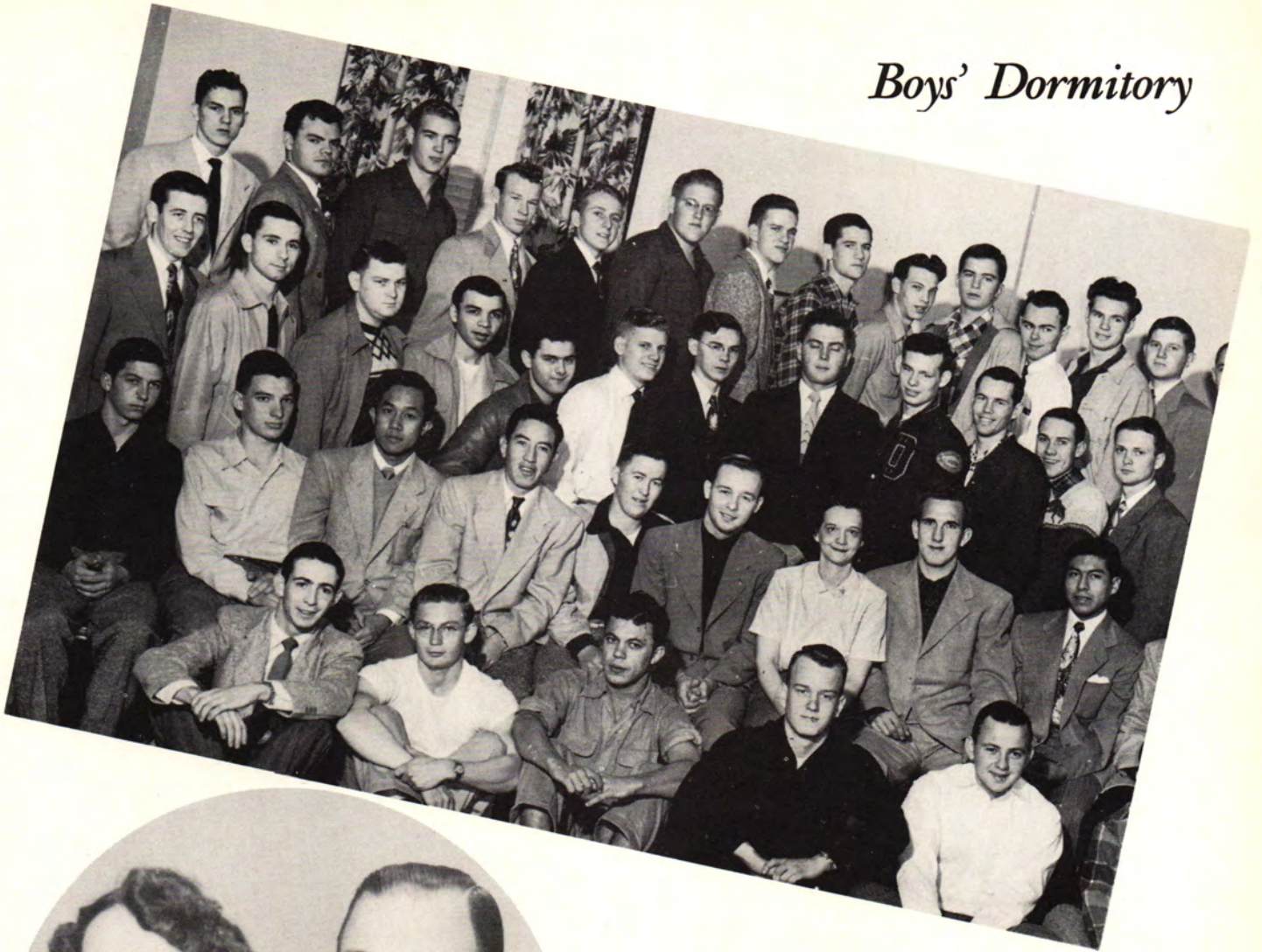


T. O. B.'s



Apartments

Boys' Dormitory



Mr. and Mrs. Don Dyer



Baptist Student Union



Back Row: Paul Scott, Salomon Rivas, Charles Howard, Bob Whitchurch, Bill Annos, Mohammed Al-katib, Jack Thomas, Fernando Cruz, Al-Hummadi, H. M. A. Abbas, Verl Pharis, Danny Hensley. *Second Row:* Fadhill Hussain, Murdadha El-Hashimi, Betty Singleton, Bob Gerdes, Betty Shepherd, Margie Edwards, Imogene Hunter, Bob Greaves, Malka Greenvald, Sue Warbinton, Allen Cathey, Neva Wasson, Ted Moore, Alice Chastain, Jim Suddarth, Naomi Jo Harp, Lorene Crow, Pauline Williams, Homa Thomas. *Third Row:* Bill Goodman, Shirley Sanders, Mary Doty, Dortha Abernathy, Dr. Bruce G. Carter, Betty Farris, Patricia Neel, Wanda Bean. *Fourth Row:* Ahmid El-Saffaouri, Jim Smith, Phillip Douglas, Gerry Calhoun, Mike Blose.

President
Gerry Calhoun
Vice-Presidents
Bob Gerdes
Pat Neel
Mary Doty



Chorus Singing at Party.

Gathering before meeting.



Dining Hall



Standing: Don Dyer, Bill Allen, Roy Radschweit, Imogene Hunter, Bob Frazier, Alice Chastain, Jack Thomas, Naomi Harp, Jeff Harris, Don McCrackin. *Seated:* Fawn Croft, Glenda Hardy, Martha Wheeler, Eugenia McIntosh, Mrs. Misenheimer, Mrs. Bross, Mrs. Courtney, Vera Williams, Mrs. Dyer.

Standing: Bill Bennett, Neva Wasson, Marlene Knox, Margie Edwards, Harley Pitcher, Billy Goodman, Pauline Williams, Malka Greenvald, Sue Warbington, David Weatherford. *Seated:* Barbara Graham, Dixie Grimes, Shirley Carlin, Jo Willa Cox, Patricia Keithley, Ardys Wolfe, Lorene Crow, Naomi Jo Harp, Alice Chastain, Bob Whitchurch, and Bill Annos.

Red Cross



Pep Club



First Row: Lorene Crow, Wanda Russell, Naomi Jo Harp, Shirley Carlin, Fawn Croft, Almeda Nicks, Priscilla Coker. *Second Row:* Shirley Sanders, Margaret Harrison, Sue Warbington, Ruth Williams, Neva Wasson, Glenda Hardy, Martha Wheeler. *Third Row:* Danny Hensley, Louise Granlee, sponsor, Phyllis Denney, Hazel Denton, Ladoris Peterson, Imogene Hunter, Vera Williams. *Fourth Row:* Margaret Marks, Cloeta Agnew, Mary Weisinger, Pauline Williams and Alice Chastain.

Young Democrats



Standing: Dale Lynch, Jack Price, Tom Lanum, Bob Whitchurch, Bill Dunbar, Billy Goodman, Bill Annos, Harley Pitcher, Bob Hendrickson, Linvel Helton, Jim Smith, and Bill Bennett. *Seated:* Dr. Bruce G. Carter, Dixie Grimes, Naomi Jo Harp, Dennis Kelsey, Bob Frazier, Alice Chastain, Robert Thomas, and Bob Gerdes, president.

Music and Speech



Back Row: Ted Moore, Danny Hensley, Frank Sanders, Mike Champlain, Verl Pharis, Mark Wiedenmann, Dick Gardner, Charles Gibson, Harley Pitcher. Front Row: Ladoris Peterson, Shirley Simone, Joyce Waldron, Naomi Harp, Phyllis Denney, Almeda Nicks; Dora Hopper, Maryetta Loveall, Margie Edwards, JoWilla Cox, Dixie Grimes, Patricia Keithley, Shirley Carlin, Ardys Wolfe, Pat Neel, Carol Jean Able, Alice Chastain, and Anne Woods.



MIXED QUARTET: Wally Wallingford, Almeda Nicks, Anne Woods, Mark Wiedenmann.



SPEECH: Barbara Graham, Carol Jean Able, Ruth Arrington, instructor; Bob Hammons, Howard Hudson, Don Hall.

INDUSTRIAL ARTS CLUB



Top Row: Connie Hall, Carl Sills, Dennis Kelsey, Wayne McBee, Jack Morgan, Bob Baker, Melvin Harper, Dale Lynch, Dick Currey, Edward McFall, Eugene Still, Homer Addington, Cecil Marks, David Johnson, Otis Harlan, David Potter, Charles Pendergraft, Bob Sloan, Dick Bartlett, James Huxtable, Ted Wiehle, sponsor.



Gerald Moudy, Homer Addington, Alan Speaker, Fred Pitts, Kenneth East, Dennis Kelsey, George Tibbs, Otis Harlan.

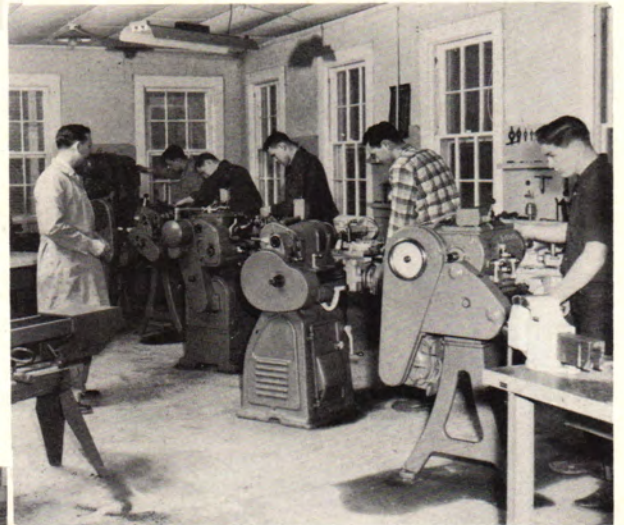


Max Mullen, Jack Morgan.



From left to right: Connie Hall, Bob Baker, Carl Sills.

From left to right: Instructor Ted Wiehe, Dick Bartlett, Charles Scott, Dick Currey, Cecil Marks, Bob Baker.

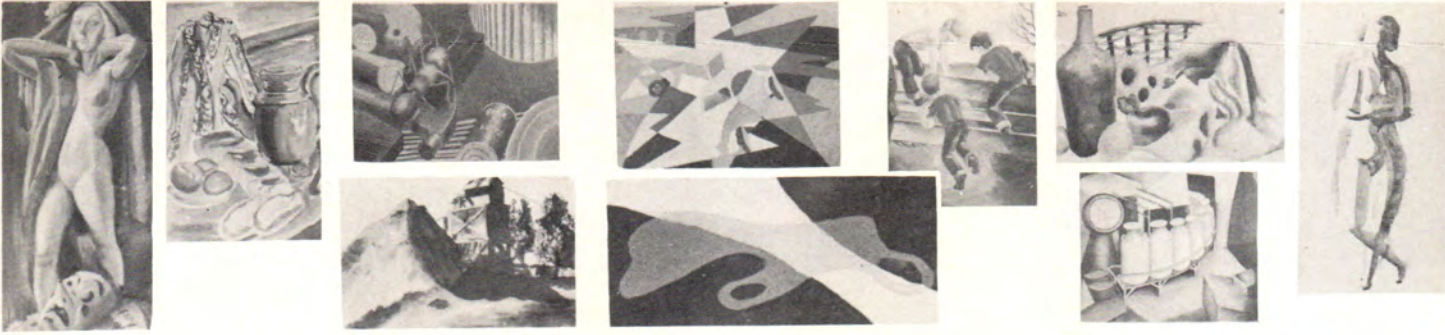


From left to right: Dennis Kelsey, Kenneth East, Otis Harlan, Merrill Chaney, Instructor; George Tibbs, Homer Addington, Fred Pitts.



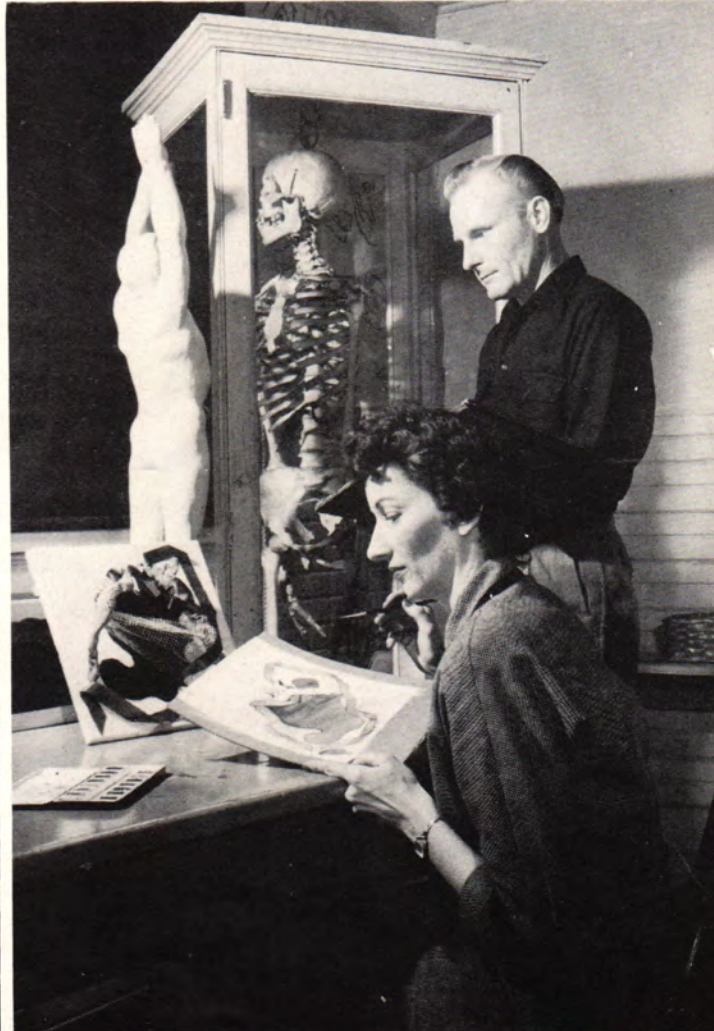
From left to right: James Huxtable, Cecil Marks, Kenneth East, Instructor Ted Wiehe, Edward McFall, Dick Bartlett, Charles Scott, Bob Sloan.

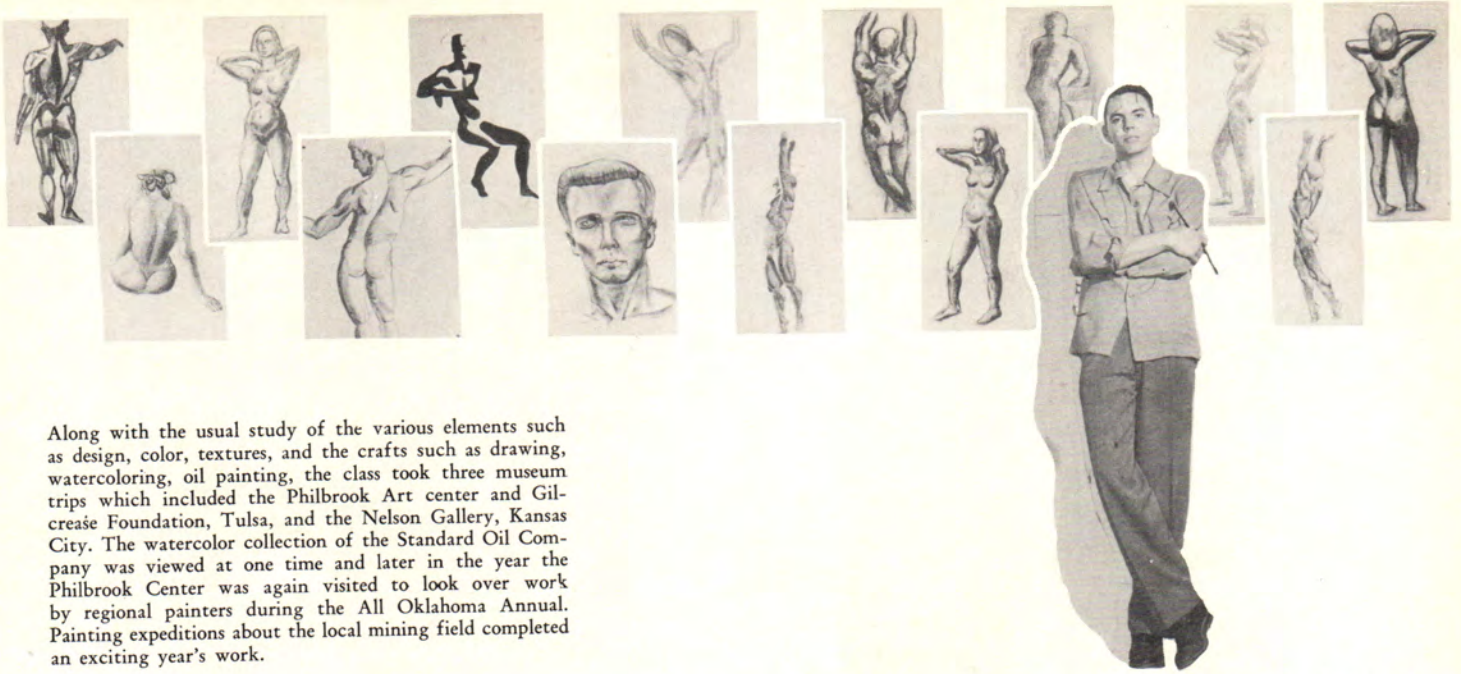




The art classes of 51-52 were the final groups to meet and work in the old quarters which for the past four years housed this department. The latest thing in art facilities is now in preparation and the coming semester will find the art division in the Arts and Sciences building. This year's class was made up of students taking the subject for a variety of reasons. Home Economic, Interior Decoration Majors, Architecture hopefuls, students desiring professional art study, and others taking it merely for its cultural benefits.

Art EMPLOYS METHOD





Along with the usual study of the various elements such as design, color, textures, and the crafts such as drawing, watercoloring, oil painting, the class took three museum trips which included the Philbrook Art center and Gilcrease Foundation, Tulsa, and the Nelson Gallery, Kansas City. The watercolor collection of the Standard Oil Company was viewed at one time and later in the year the Philbrook Center was again visited to look over work by regional painters during the All Oklahoma Annual. Painting expeditions about the local mining field completed an exciting year's work.

FOR SEEING, FEELING, CREATING





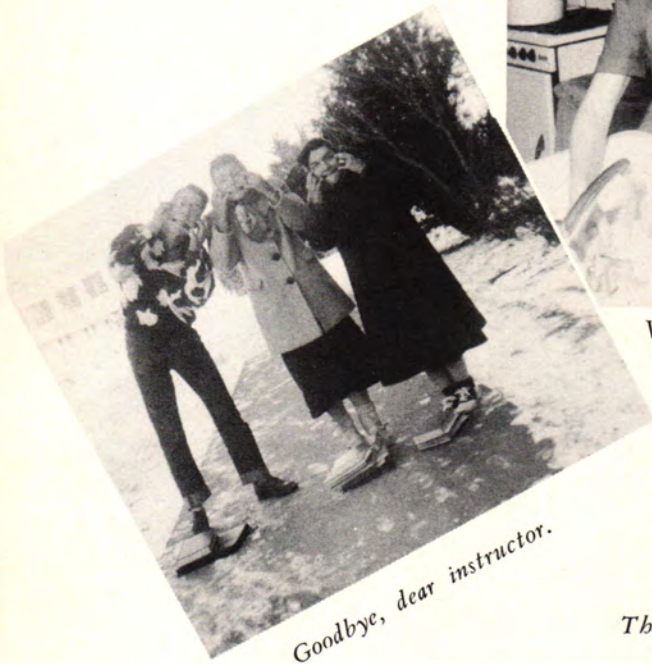
Where's Dick Tracy?



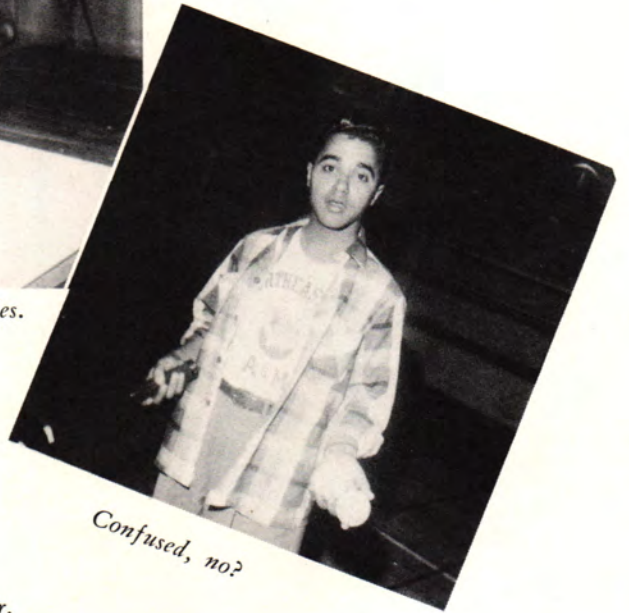
Sprinkling the lawn.



What? No bubbles.



Goodbye, dear instructor.

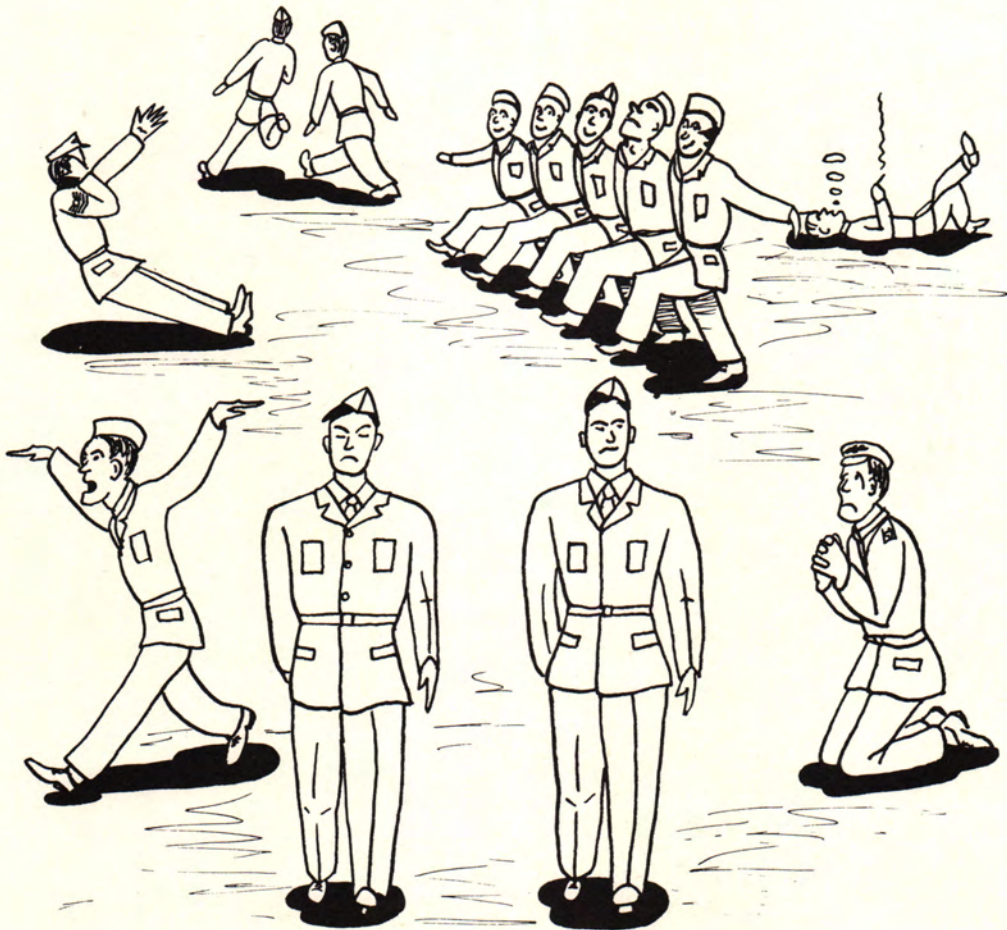
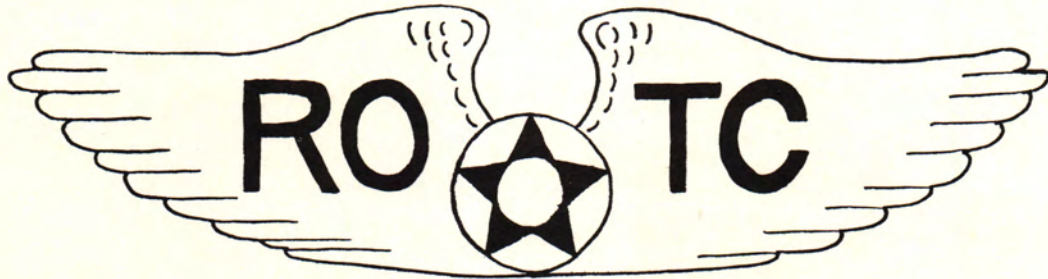


Confused, no?

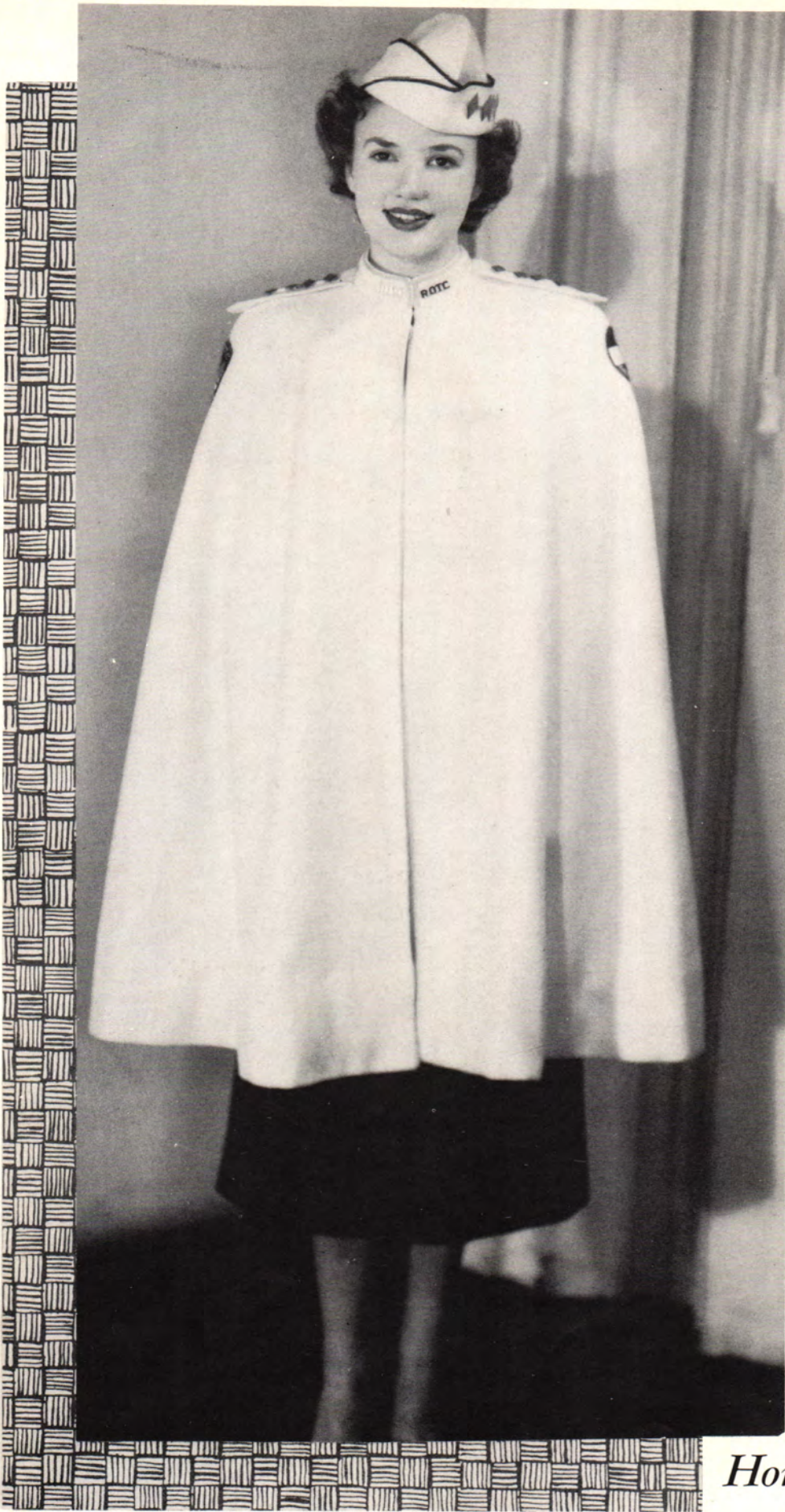
The studying's over.



AIR



BOB S. LORAN



*Honorary Cadet Colonel
Wanda Russell*

SQUARDON A

Flight A



Back Row: George A. Romick, Jerry E. Stevens, Leroy A. Scoles, Lee C. Sills, Melvin W. Harper, Richard D. Wise, Ruthford T. Taylor, Kenneth E. East, Otis Q. Brock, Joe E. Ward. *Second Row:* Rex M. Kimmel, Jack E. Niell, Ben H. Cambron, John C. Tibbs, John L. Gruenberg, Alan P. Speaker, James H. Shope, Gerald L. Moudy, Dennis G. Woods, William C. Plumb, Richard Q. Price. *Third Row:* Harmon F. Cope, Howard E. Klinefelter, Bill E. Lay, Fred A. Pitts, George C. Tibbes, Eddie R. McGinis, and Howard G. Hudson. Flight leader Robert L. Thomas.

Flight B



First Row: Richard S. Bartlett, George N. Webb, Robert H. Hamer, James W. Tucker, Orvin L. Farmer, Virgil R. Mayabb, Charles E. Woods, Harold D. Hamlett, William R. Boyce, Bob M. Baker. *Second Row:* Charles W. Pendergraft, Robert W. Kauffman, Connie M. Hall, William J. Ward, Donald J. Elgin, Bill L. Scantlen, Robert L. Hendrickson, Dick Curry, Jefferson B. Harris. *Third Row:* John H. Lawrence, Jerald W. Schmalhorst, David C. Claxton, David L. Blankenship, Vernon M. Patton, Howard D. Williams, Franklyn D. Taylor, Rosser P. Scott, Melvin C. Kaup, Murray M. Blose. Flight leader Rex D. Coppedge.

SQUADRON B

Flight A



Back Row: Donald R. Hall, Lyon E. Speegle, James R. Wyly, Glenn E. Plumb, Jerri C. Treager, Charles R. Hukill, Ronald L. Butterfield, Robert T. Rothrock, Donald R. McCrackin. *Second row:* Jack V. Beley, John D. Harris, Harley L. Pitcher, Paul D. Bross, John L. Ferguson, Darrell G. Wallis, Vernon F. Wilson, Charles D. Scott, Jerome V. Haney. *Third Row:* Joe M. Langley, Joseph C. Fry, Fred A. Cathey, James L. Suddarth, Roger L. Nail, Don A. Enos, Faymon N. Holmes, James T. Atkinson, and William L. Dunbar. Flight leader Gerald G. Calhoun.

Flight B



Back Row: Bob G. Kraybill, Edward A. McFall, Wayne A. McBee, Lloyd J. Huxtable, Tom R. Binkley, Charles O. Childress, Herman Miller, Jim F. Rusher, Otis G. Harlan. *Second Row:* James O. Ingram, Bill G. Treat, John R. Barlow, Jimmie L. Andrews, Dennis W. Kelsey, Wally M. Wallingford, Bill G. Caves, Albert J. Hamlett, Andrew W. Griffin, Eldon E. Broyles. *Third Row:* James W. Orr, John D. Laue, David W. Ranger, Bobby L. James, Billy J. Carr, Jack V. Bayliss, Charles R. Gibson, Harrison T. Lanum, and Jack O. Thomas. Flight leader Franklin H. Sanders.

INTERNATIONAL FRIENDSHIP

Students from seven countries, Bolivia, Peru, Honduras, Guatemala, Iran, Iraq, Thailand, are represented at the college.



**Miami Floral
And
Greenhouse**



Lyre Music House

Wardrobe Cleaners

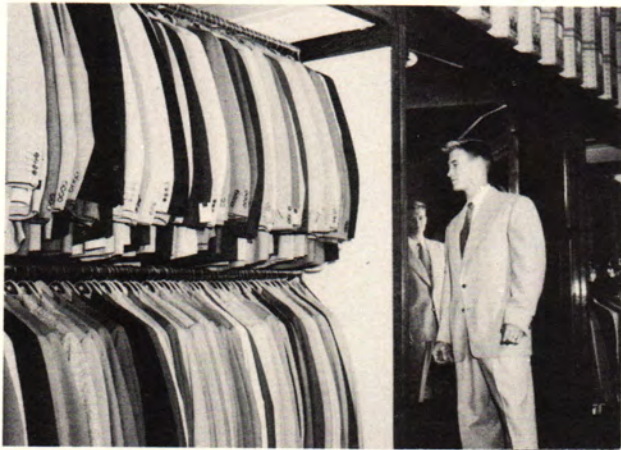


Ed's Ice Cream



Burtrum Motor Co.

Security Bank
And Trust Co.



B And K Menswear

Williams Jewelry

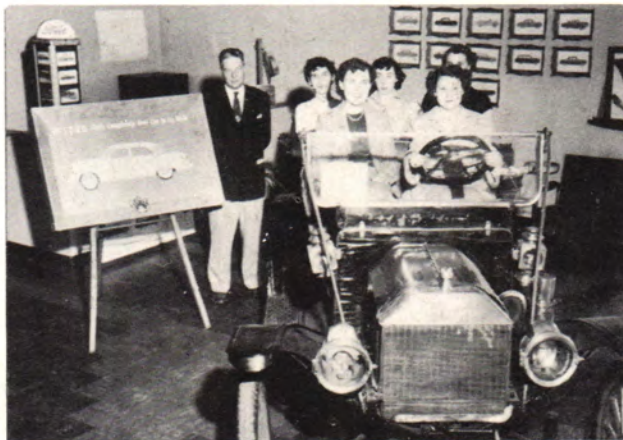


Orrick Sparlin,
Photography



Miami
Coco Cola Bottling Co.

Miami Hotel



Lowry Ford Motor Co.



Tri-State Lumber Co.

Wayne Pack Nash Co.



Daves Bakery

Glory B Theater



Tri-State Motor Co.



Dawson Jewelry

Hub Clothing Co.



Spencer Drug



Sandmire
Texaco Station

Bob Hill Grocery



Meadow Gold

R And S Motor Co.



Jimmy Smith
Oldsmobile Co.

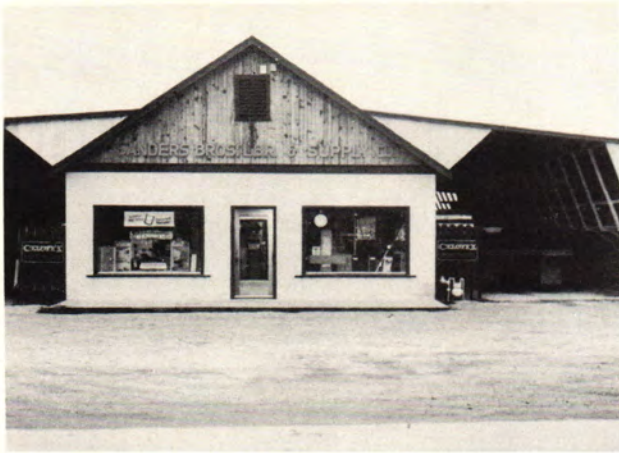


The Mabon Shop

First National Bank



Savage Oil Co.



Sanders Bros.
Lumber And Supply Co.

Miami Laundry
Dry Cleaning



Wiley Rexall Drug

Kennard-Hamilton
Motor Co.



N.E.O. Railroad



Virgil Burtrum Motor Co.

Louis Price Dry Goods



Miami Daily News Record

Library
Northeastern A. & M. College
Miami, Oklahoma



Strike Mor Recreation

Bob Ogden Service Station



Ford Farm Store

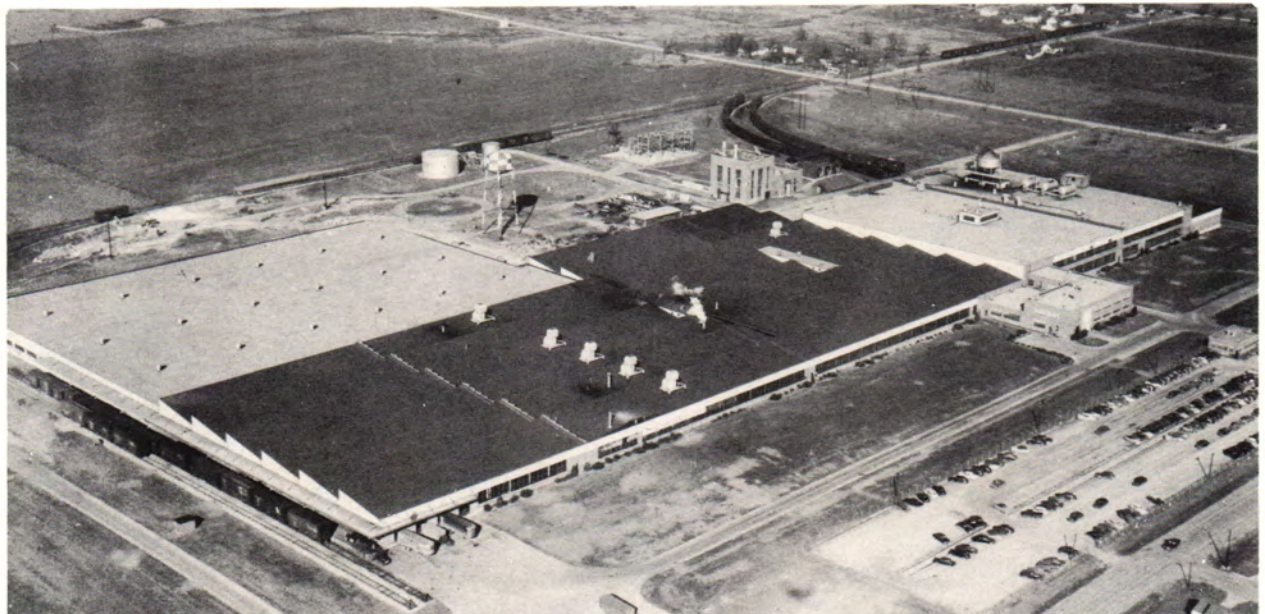
Ramey Pontiac



Dee's Drive In



Norton-Littleton
Motor Co.

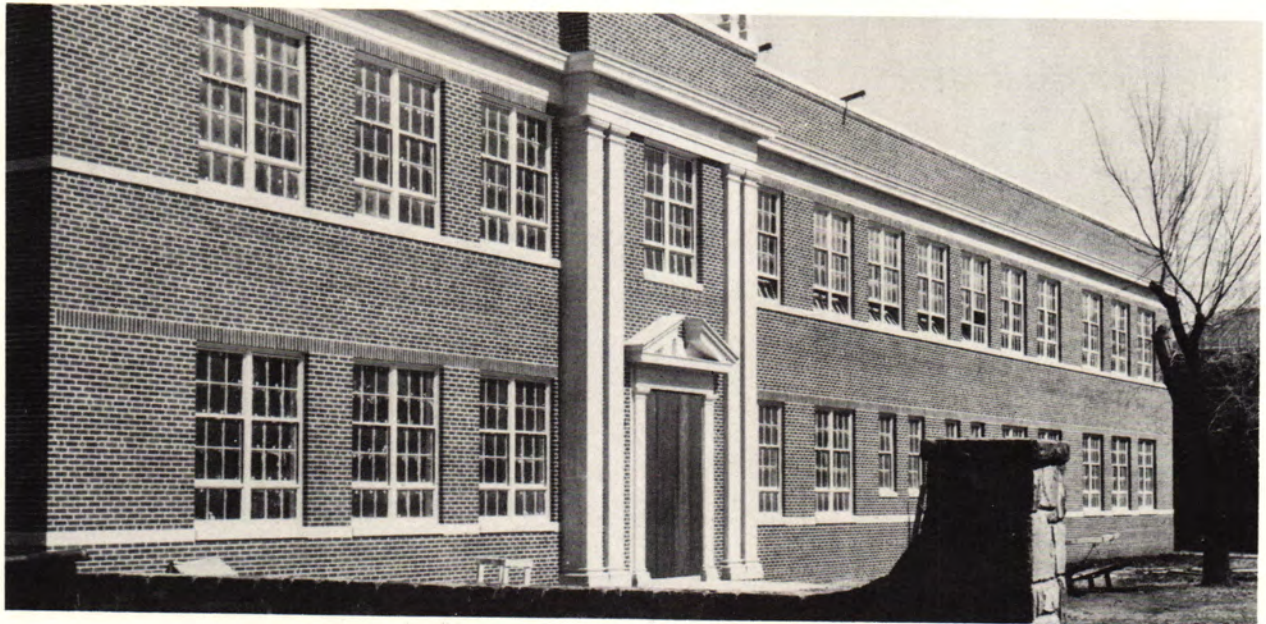


B.F. Goodrich Rubber Company



Home Appliance Center

Kreeger
Transfer And Storage



Schmidt Construction Co.



Cooper Funeral Home



Eagle-Picher Co., Mining And Smelting Division

*Your Professional
Full Time Photography*

- ANYTHING!
- ANYTIME!
- ANYWHERE!

Your Desire . . . Our Command

Yale Studio

Miami, Oklahoma

WHOLESALE ELECTRICAL SUPPLIES

and

LIGHTING FIXTURES

Cook

Electric Supply Co.

106 North Lee Street

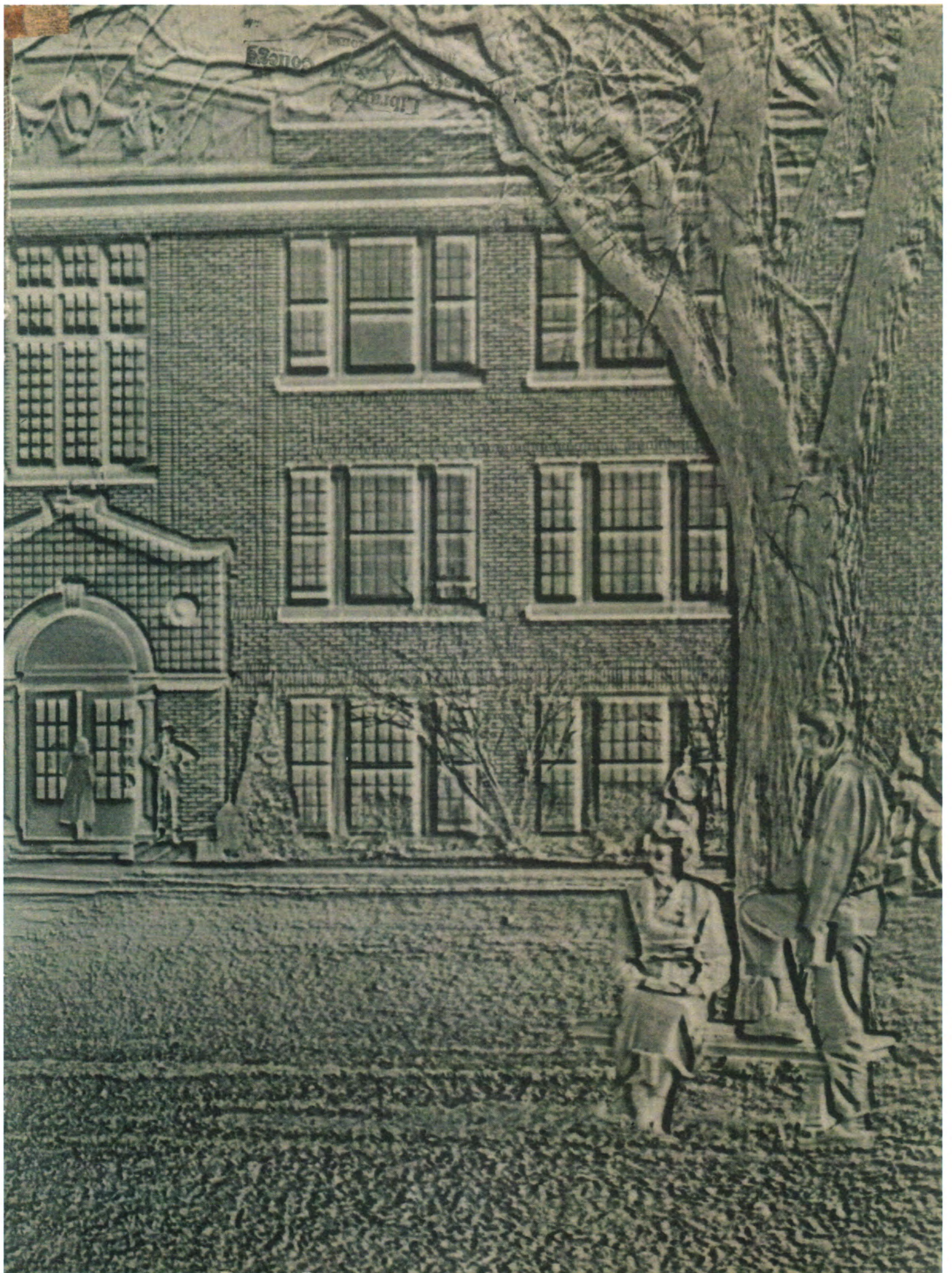
Oklahoma City, Oklahoma

The Northeastern Oklahoma Agriculture and Mechanical College
and the Annual Staff wishes to thank each advertiser who
made possible the Viking Annual for 1952.

Library
A. & M. College
Oklahoma
Oklahoma

Library
Northeastern
Northeastern A. & M. College
Miami, Oklahoma





R
378
N81v
1952



NEO A&M College Archive Collection



The Viking – the NEO A&M College Yearbook

Digital copies of The Viking, Northeastern Oklahoma A&M College's annual yearbook, are available in .pdf format on the NEO website for non-commercial purposes only. Scans were created using the best available editions; where stains, color-fading, and contributed marks (usually signatures) were visible on the original they also appear in the digital copy. The edge of some pages in oversized editions may be partially lost due to width limitations on the scanning bed. NEO yearbook editions that do not appear on the website are not part of the collection at present. If you would like to donate a yearbook, please contact the NEO Library.