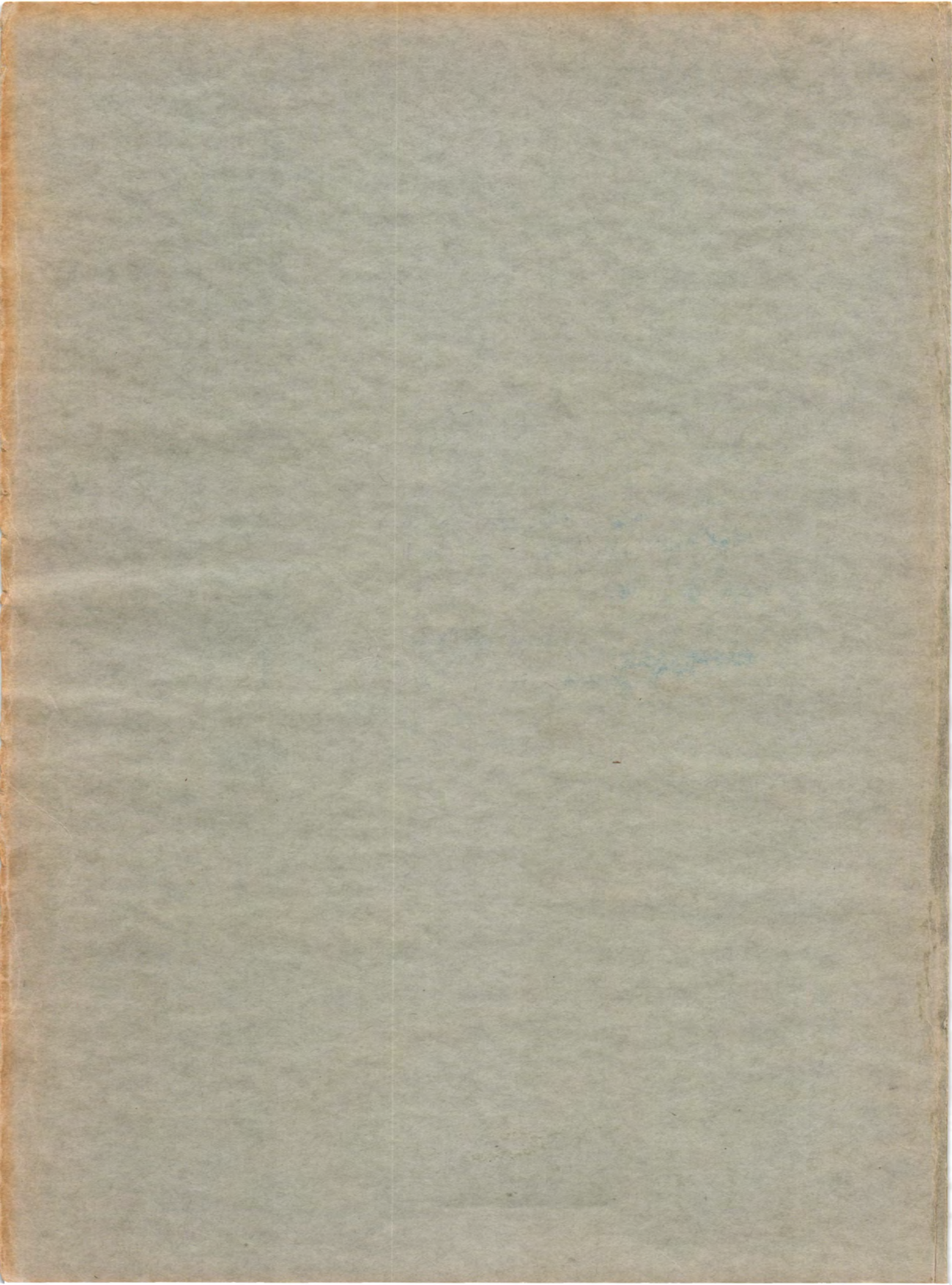


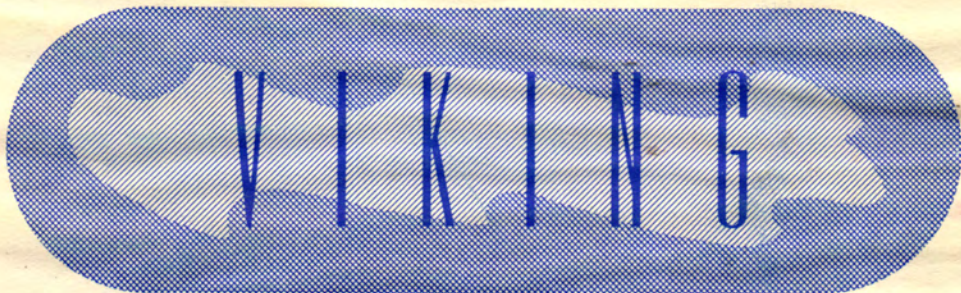


*The* **V** *iking*  
1949



Margaret Worley

THE



1949



Northeastern Oklahoma

1919

1929

1939

1949

A BOOK OF PROGRESS

THE VIKING

A & M College, Miami

**R**espectfully dedicated to President Bruce G. Carter, whose untiring efforts have brought about an expansion of our school, not only in physical growth but also in service to the people of Northeastern Oklahoma. During his six years with our college, his forethought, initiative, and persistence have set us a pattern of progress.



*Bruce G. Carter*



# BOARD OF REGENTS



GOVERNOR ROY J. TURNER



JOHN CARPENTER  
Red Rock, Oklahoma



O. L. LACKY  
Okmulgee, Oklahoma



EARL RUSSELL  
Duncan, Oklahoma



W. ELMER HARBER  
Shawnee, Oklahoma



P. E. HARRILL  
Oklahoma City, Oklahoma



FRED DRUMMOND  
Hominy, Oklahoma



EDWARD DAVIS  
Erick, Oklahoma



R. T. STUART  
Oklahoma City, Oklahoma



## ADMINISTRATION BUILDING 1919

A pattern of progress. How can such a pattern be shown on the pages of a yearbook? In the dedication, physical growth and service are named as part of that pattern. Service is not something that can be put on paper, nor can its results.

Physical growth is a different story. It is something tangible, something material. True, the physical growth of our college cannot be fully represented by print or by pictures. Yet this book is limited to that type of communication.

Throughout these pages are pictures of campus buildings with their names and the dates of their construction. Although pictorially and factually accurate, they still cannot represent physical growth in its completeness.

The meaning of service and of physical growth can be determined only by the students, alumni, and faculty members. Only they, as individuals, can fully realize the majesty of our school.



MELVIN A. SHIPLEY  
Dean of College  
Business Advisor  
Kansas State  
Teachers College  
Pittsburg

# FACULTY



FAYE VANN  
Dean of Women  
Languages  
University of  
Oklahoma



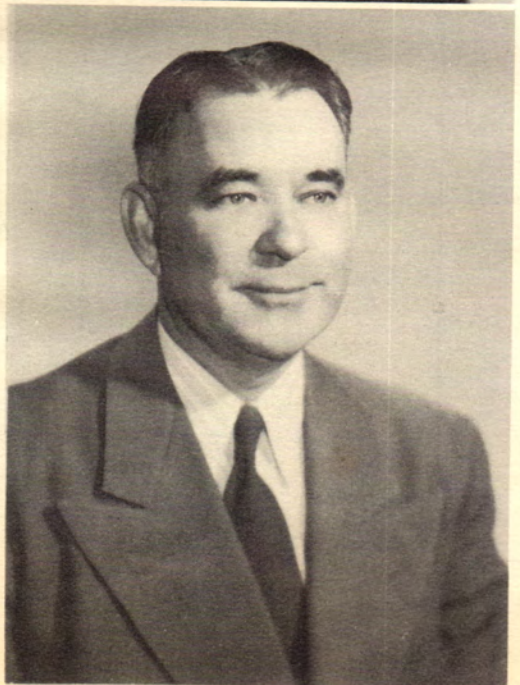
CARL C. RIGNEY  
Dean of Men  
Biological Science  
Oklahoma Agricultural  
and Mechanical  
College



MARY JANE SPEER  
Registrar  
Northeastern Oklahoma  
Agricultural and  
Mechanical College



LULA K. PRATT  
Librarian  
University of  
Oklahoma



WILLIAM M. RUSSELL  
Guidance Director  
Oklahoma Agricultural  
and Mechanical College



JOE ABLES  
Industrial Education  
Oklahoma Agricultural  
and Mechanical College



RUTH ARRINGTON  
Speech  
Oklahoma College for Women



ETTA R. BRUTON  
English  
University of Wyoming



ROY CAMPBELL  
Industrial Education  
Oklahoma Agricultural  
and Mechanical College



RUBY T. CAMPBELL  
Mathematics  
Oklahoma Agricultural  
and Mechanical College

MERRILL C. CHANEY  
Industrial Education  
Kansas State Teachers'  
College





GLADYS COPEN  
Commerce  
Kansas State Teachers'  
College



FRANK W. CUNNINGHAM  
Physical Science  
Kansas State Teachers'  
College



WILLIAM ALFRED DAVIS  
Industrial Education  
Oklahoma Agricultural  
and Mechanical College



JOHN W. ELLIOTT  
Instrumental Music  
Oklahoma Agricultural  
and Mechanical College



JESS FRONTERHOUSE  
Athletic Director and  
Director of Spartan Housing  
Oklahoma City University



VIRGINIA LINDSEY  
History and Government  
University of Oklahoma

OREN NEED  
Mathematics  
Kansas State Teachers'  
College



KENNETH RICHARDS  
Vocal Music  
University of Oklahoma

GLADYS L. ROBERTSON  
Physical Education  
Drake University



S. ALBERT ROBERTSON  
Director of Athletics  
Oklahoma Agricultural  
and Mechanical College



HELEN C. SIMMONS  
English  
Oklahoma Agricultural  
and Mechanical College



LUTHER CONRAD SMITH  
Pre-Veterinary Science  
Colorado Agricultural  
and Mechanical College





MABEL JENNINGS SPEAKER  
Home Economics  
Oklahoma Agricultural  
and Mechanical College

HOMA STOKES THOMAS  
Business Administration  
University of Oklahoma



HARRY SYNAR  
Agriculture  
Oklahoma Agricultural  
and Mechanical College

LOIS THOMAS      WAS  
Piano                    tion  
Harding College      oma



JOHN THIESING  
Mathematics and Physics  
Kansas State Teachers'  
College

RAY VANDERBURG  
Journalism and English  
University of Oklahoma





THEODORE WIEHE  
Industrial Education  
Oklahoma Agricultural and  
Mechanical College



CHARLES BANKS WILSON  
Art  
Art Institute of Chicago



MARVIN WOOD  
Agronomy  
Oklahoma Agricultural and  
Mechanical College



ELMO BENEDICT  
Industrial Art  
Northeast Oklahoma  
Agricultural and Mechanical  
College

## RESIDENCE HALL PERSONNEL



DORA RICHARDS  
Counselor for Women



DONALD C. DYER  
Counselor for Men



MARIAN DYER  
Dietitian

## VETERANS' ADMINISTRATION



JOE M. WOODARD



MAE BEARSKIN



RUSSELL CROOCH

## OFFICE PERSONNEL



MARY SUE PROPP



LETA THIESING



MILDRED GIBSON



EMMA JANE BRYCE

# CLASSES



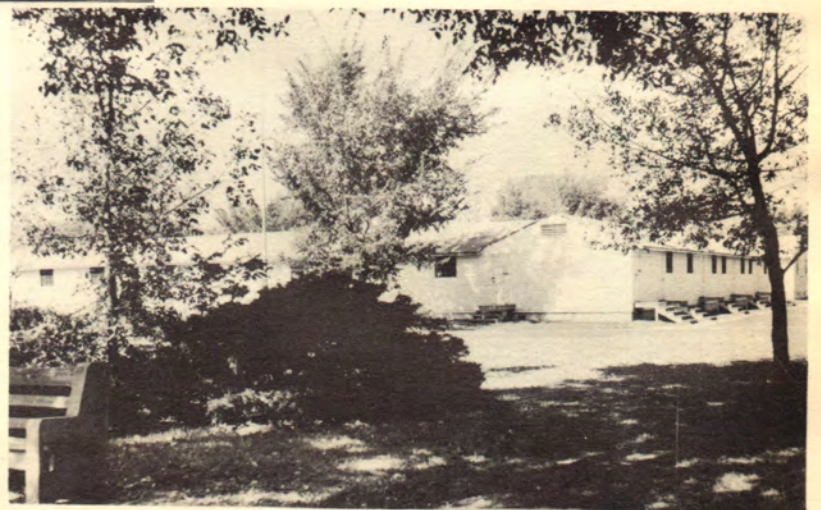
INDUSTRIAL ARTS BUILDING 1941

VETERANS' ADMINISTRATION 1948



TRADE SCHOOL BUILDING 1947

CLASSROOM BUILDINGS 1947





# SOPHOMORES



|                                      |                           |
|--------------------------------------|---------------------------|
| President .....                      | BILL ALLEY                |
| Vice-President .....                 | TOM RICHARDVILLE          |
| Secretary-Treasurer .....            | BETTY HOUSEMAN            |
| Reporter .....                       | A. L. DOUTHITT            |
| Student Council Representative ..... | HARRIET DUNN              |
| Sponsors .....                       | RUTH ARRINGTON, OREN NEED |



JESS ADAMS—Tulsa Oklahoma • Social Work, Student Council, Eta Iota Tau President, International Relations Club Vice-President, Win-Jammers Cheer Leader, "Joan of Lorraine."

LEWIS ADDINGTON—Welch, Oklahoma • History

BILL ALLEY—Tulsa, Oklahoma • Business Administration, Phi Theta Kappa, Phi Sigma Nu, Reporter, Sophomore Class President, Business Society, Norse Wind Editor, Press Club, Okla. Jr. College Press Assn. Vice-President.



ROBERT M. ANDERSON—Grove, Oklahoma • Business Administration.

ALBERT ANDREW—Nowata, Oklahoma • Engineering.

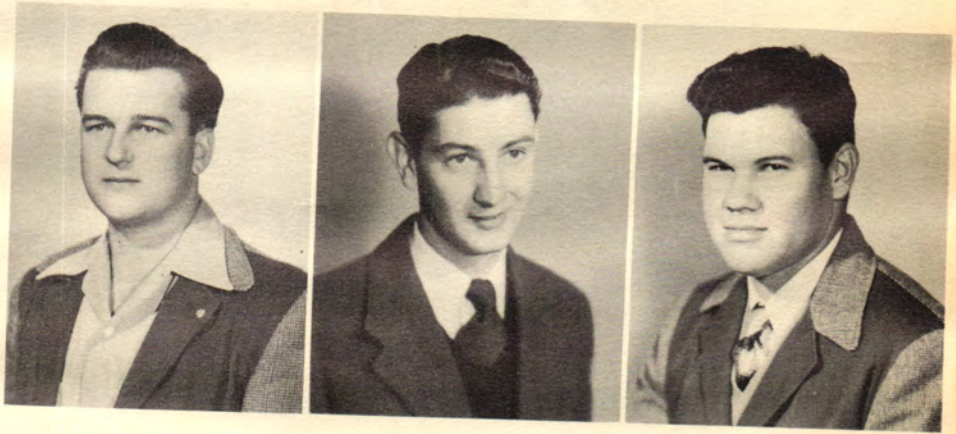
CATALINO ARROCHA—Panama City, Panama • Agriculture.



ARNOLD BABST—Miami, Oklahoma • Mechanics.

HUBERT BALAY—Seneca, Missouri • Chemical Engineering.

WILFORD BARNETT—Miami, Oklahoma • Agriculture, Aggies.

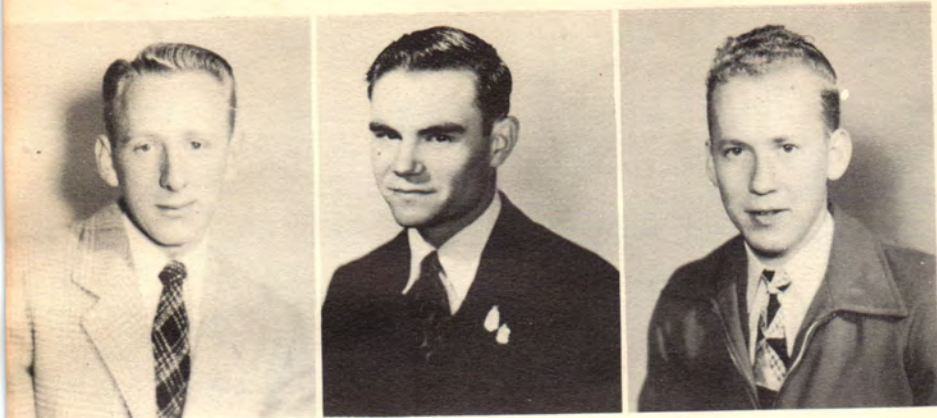


BOB BATTLES—Tulsa, Oklahoma • Veterinary Medicine.

FAY BEEBE—Miami, Oklahoma • Business Administration, Business Society Reporter, Win-Janes.

WILLIAM E. BEEBE—Miami, Oklahoma • Law, Business Society, Win-Jammers.





ROBERT BENSON—Mount Vernon, Missouri • Business Administration, Business Society, Norse Wind Staff, Press Club, Viking Staff, Win-Jammers.

DONALD BLANKENSHIP—Catoosa, Oklahoma • Engineering.

WAYBURN BLANKENSHIP—Pryor, Oklahoma • Engineering, Eta Iota Tau Treasurer, Baptist Student Union.



FRANCIS W. BLEVINS—Vinita, Oklahoma • Business Administration.

BASIL BOND—Miami, Oklahoma • Business Administration.

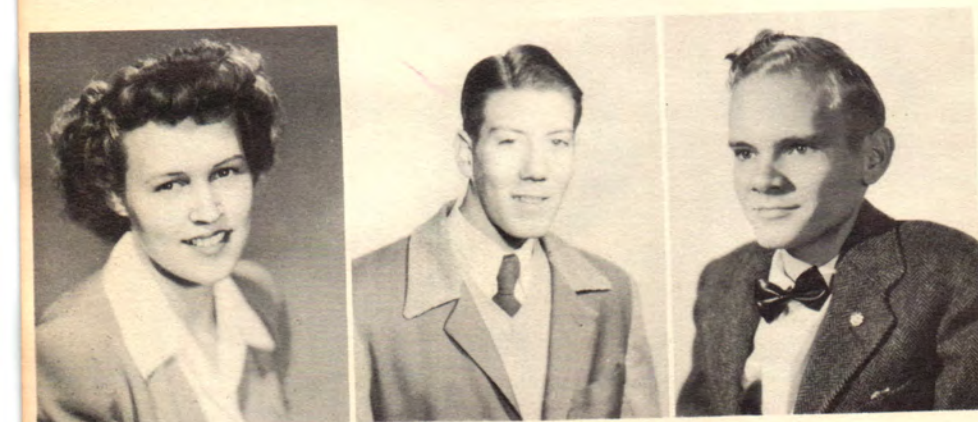
DAVID BOYD—Grove, Oklahoma • Business Administration.



ROSA LEE BREWSTER—Miami, Oklahoma • Elementary Education.

BETTY JOE BROWN—Miami, Oklahoma • Home Economics.

DORIS BROWN—Big Cabin, Oklahoma • Business Administration, Eta Upsilon Gamma, Aggiettes, Business Society.



VIRGINIA BRYAN—Piano, Texas • Business Administration, Sigma Iota Chi, Press Club.

WILLIAM BUTEFISH—Tulsa, Oklahoma • Engineering, Press Club, Business Manager Win-Jammers.

KENNETH RAYMOND CANTWELL—Seneca, Missouri • Engineering, Phi Theta Kappa President, Baptist Student Union, Engineers Vice-President, Win-Jammers.

JACK H. CLABAUGH—Miami, Oklahoma • Engineering.



EARNEST EUGENE CLEVELAND—Welch, Oklahoma • Pre-Medic.



ROBERT ARTHUR COLLINS, JR.—Broken Arrow, Oklahoma • Refrigeration, O Club.



DELPHIA CONNER—Grove, Oklahoma • English, Phi Theta Kappa, Sigma Iota Chi, Win-Janes.



WILLIS C. CUNNINGHAM—Miami, Oklahoma • Science, Student Council, Phi Theta Kappa, Band, Engineers Reporter.



HARRIETT DUNN—Wyandotte, Oklahoma • Music, Student Council, Phi Theta Kappa Treasurer, Sigma Iota Chi President, Chorus, "Joan of Lorraine," Win-Janes.



PAULINE EMARHLA—Cardin, Oklahoma • Home Economics, Aggies.



RAYMOND CALVIN GAILEY—Baxter Springs, Oklahoma • Agriculture.



BEE JAY GARRISON—Welch, Oklahoma • Commercial Art, Norse Wind Photographer, Viking Staff photographer.



KENNETH GARRISON—Welch, Oklahoma • Arts & Sciences, O Club.

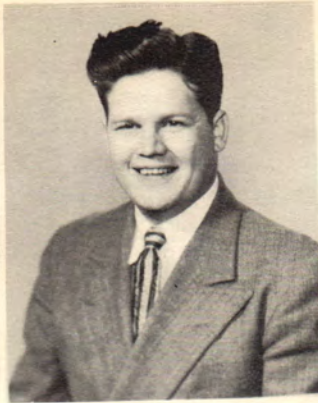


FREDDIE N. GAY—Vinita, Oklahoma • Agriculture, Aggies.



GWEN GLADDEN—Miami, Oklahoma • Home Economics, Student Council, Eta Upsilon Gamma, Aggies, Baptist Student Union, Press Club.





POLLY PAT GILBERT—Miami, Oklahoma • Arts & Sciences, Sigma Iota Chi.

PHYLLIS MAY GRAHAM—Miami, Oklahoma • History & Government, Student Council, Phi Theta Kappa Secretary, Aggiettes, International Relations Club President.

RAY GRIGG—Chelsea, Oklahoma • Arts & Sciences, Press Club.



CHARLINE GROSS—Welch, Oklahoma • Home Economics, Aggiette Vice-President, Band Twirler, Win-Janes Vice-President.

SAMUEL J. GROUNDS—Sapulpa, Oklahoma • Agriculture, Student Council, Aggies Vice-President, President Baptist Student Union, Boxing Coach, "Joan of Lorraine," Win-Jammers President.

ROSEMARY GRUBB—Miami, Oklahoma • Business Administration, Phi Theta Kappa, Eta Upsilon Gamma Secretary, Business Society Secretary, Chorus, Viking Staff, Win-Janes.



WILLIAM BERT GRUENBERG—Chelsea, Oklahoma • Engineering, Engineers Treasurer, Win-Jammers.

LINCOLN O. GUNN—Grove, Oklahoma • Arts & Sciences.

FRANCES HALE—Miami, Oklahoma • Business Education, Eta Upsilon Gamma Reporter, Business Society, Chorus.



GEORGE HANEY—Big Cabin, Oklahoma • Arts & Sciences, Business Society.

FLOYD A. HARTMAN—Estherville, Iowa • Commerce, Business Society.

INA LOU HASLETT—Commerce, Oklahoma • Math.

SUE HENSON—Afton, Oklahoma • Business Administration, Business Society, Chorus, International Relations Club, Viking Staff, Win-Janes.

ALLIE HAYNES—Fairland, Oklahoma • Mathematics, Phi Theta Kappa, Baptist Student Union.

ministration, Business Society, Chorus, International Relations Club, Viking Staff, Win-Janes.

PATSY HATFIELD—Cardin, Oklahoma • Art, Eta Upsilon Gamma, Aggiette.



BETTY HOUSMAN—Miami, Oklahoma • Business Administration, Sigma Iota Chi Treasurer, Sophomore Class Secretary, Business Society Recording Secretary, Win-Janes.

GLENN HUNTER—Miami, Oklahoma • Business Administration, Phi Sigma Nu President, Business Society, "Joan of Lorraine," Win-Jammers.

PAUL J. JAGGARS—Pryor, Oklahoma • Agriculture, Aggies Vice-President, Baptist Student Union, Win-Jammers.



HELEN JANEWAY—Picher, Oklahoma • Home Economics.

BILL JOE JONES—Miami, Oklahoma • Engineering, Engineers, Win-Jammers.

PHYLLIS KEETON—Miami, Oklahoma • Arts & Sciences, Student Council, Eta Upsilon Gamma Vice-President, President, Chorus, Viking Staff, Win-Janes Secretary-Treasurer.



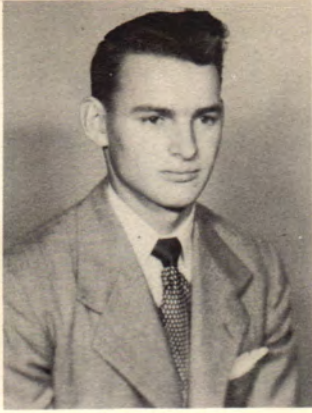
JOE KIESEL—Pryor, Oklahoma • Refrigeration, Engineers.

BASIL KISSIRE—Southwest City, Missouri • Education.

AL JOE KOURI—Chelsea, Oklahoma • Agriculture, Student Council, Aggies President, International Relations Club, Win-Jammers.







GENEVA FAYE LAKEY—Miami, Oklahoma • Home Economics, Aggiette Secretary-Treasurer, Chorus.

JAMES ERNEST LANDON—Seneca, Missouri • Physical Education, Student Council, O Club President.

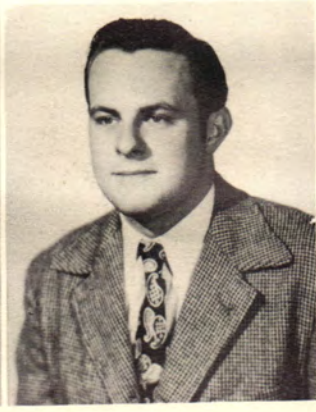
TEDDY LEGATO—Wellston, Oklahoma • Animal Husbandry.



CARLE EUGENE LEGG—Centralia, Oklahoma • Agriculture, Aggie Vice-President.

JAMES LOWRY—El Reno, Oklahoma • Engineer, Engineers President.

JOHNNY McCOMB—Big Cabin, Oklahoma • Arts & Sciences, Business Society.



SHIRLEY McCUSKEY—Miami, Oklahoma • Sociology, Sigma Iota Chi, Press Club, Chorus.

WILLIAM McLAUGHLIN—Miami, Oklahoma • Business Administration, Phi Sigma Nu President, Business Society, Press Club.

HELEN MALONE—Seneca, Missouri • Mathematics, Student Council, Phi Theta Kappa Vice-President, Engineers.



CLARENCE MARTIN—Chelsea, Oklahoma • Vocational Agriculture, Student Council, Baptist Student Union President, Aggies Secretary-Treasurer, Win-Jammers Secretary-Treasurer.

ROBERT DALE MARTIN—Columbus, Kansas • Engineers, Business Society, Chorus, O Club, Win-Jammers.

MARY MATLOCK—Afton, Oklahoma • Business Administration, Eta Upsilon Gamma Treasurer, Business Society.

BOB MAY—Fairland, Oklahoma • Radio.

HOWARD MEADOWS—Wyandotte, Oklahoma • Agriculture, Eta Iota Tau Vice-President, President.

CHARLES MILLER—Centralia, Oklahoma • Accounting, Phi Theta Kappa, Business Society President.



NORMAN MILLS—Oologah, Oklahoma • Agriculture, Aggies.

WILLIAM MOODY—Galena, Kansas • Chemical Engineering, Student Council President, Phi Theta Kappa, Engineers Secretary, Viking Staff Associate Editor, Win-Jammers.

MARY RUTH MORGAN—Coody's Bluff, Oklahoma • Art, Eta Upsilon Gamma, Aggiettes, Win-Janes.



BILLY MORRIS—Seneca, Missouri • Engineering, "Joan of Lorraine."

BETTY MOWERY—Strang, Oklahoma • Home Economics, Aggiettes, International Relations Club

THOMAS MURPHY—Miami, Oklahoma • Math



JOE MUSKRAT—Pineville, Missouri • Animal Husbandry, Aggies, Win-Jammers.

JEAN NIX—Pryor, Oklahoma • Business Administration, Aggiettes, Business Society, Win-Janes.

JAMES W. PEES—Miami, Oklahoma • Agriculture, Aggies, Baptist Student Union.





ROBERT PIRKEY—Pryor, Oklahoma • Engineering.

BILLYE SUE POYNOR—Westville, Oklahoma • Business Administration, Student Council Secretary, Sigma Iota Chi Vice-President, Business Society, Band President, Win-Janes.

DWIGHT PRAYTOR—Bluejacket, Oklahoma • Animal Husbandry.



MARY SUE PROPP—Adair, Oklahoma • Commerce, Eta Upsilon Gamma President, Aggiette, Business Society, Chorus, Win-Janes.

GEORGE B. RENO—Afton, Oklahoma • Business Administration, Business Society.

JANE ANN RIDER (Special Student)—Miami, Oklahoma • Physical Education, Sigma Iota Chi.



GERALD EMANUEL RISNER—Middleton, Ohio • Law, Press Club.

KENNETH EARL RITTER—Wyandotte, Oklahoma • Agriculture, Aggies.

CARSON B. ROBERTS, JR.—Miami, Oklahoma • Agriculture, Aggies, Win-Jammers.



CALVIN E. ROHMILLER—Vinita, Oklahoma • Accounting, Student Council, Business Society Vice-President, Win-Jammers, "Joan of Lorraine".

NED J. SARGENT—Seneca, Missouri • Business Administration.

GEORGE A. SCHOLES—Miami, Oklahoma • Electrical Engineering.

JAMES A. SHOULTZ—Vinita, Oklahoma • Engineering.

SHERMAN LEON SILER—Perry, Oklahoma • Soils.

JACK SIMPSON—Edwardsville, Illinois • Arts & Sciences, Phi Theta Kappa Reporter, Chorus, International Relations Club Reporter, "Joan of Lorraine," Norse Wind Associate Editor, Press Club, Viking Staff Editor.



MARSHALL SMITH—Quapaw, Oklahoma • Physical Education, Student Council, O Club.

NAOMI LOUISE SMITH—Miami, Oklahoma • Home Economics, Aggiettes, Baptist Student Union, Chorus.

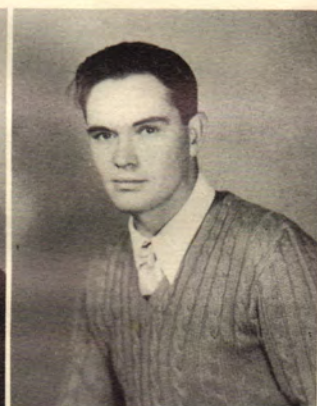
SHIRLEY CAROLYN SMITH—Commerce, Oklahoma • Home Economics, Aggiettes President, Vice-President.



HERBERT C. SPRATT—Mount Vernon, Missouri • Business Administration, Business Club, Press Club.

ROBERT REX STANLEY—Commerce, Oklahoma • Refrigeration, Engineer.

ROY STRATE—Miami, Oklahoma • Electrical Engineering, Phi Sigma Nu, Engineers.



CLEOTA SWEARENGIN—Salina, Oklahoma • Business Administration, Aggiettes, Win-Janes.

DONALD THARP—Miami, Oklahoma • Business Administration, Business Society.

BILLY RUSSELL TRISDALE—Drumright, Oklahoma • Business Administration.



## SOPHOMORES NOT PICTURED



PEGGIE LOU VANTREASE—Joplin, Missouri • Business Administration, Sigma Iota Chi, Business Society, Win-Janes.

LEWIS ELMO WALL—Ada, Oklahoma • Commercial Education.

Henry Adair  
 Leslie Amos  
 Leroy Bash  
 Charles Baty  
 Alvin Bearskin  
 Willie Bess  
 Emmerson Black  
 Robert Bond  
 J. W. Brewington  
 Morgan Burgin  
 Max Buzzard  
 Donald Leroy Capps  
 Clifford L. Carr  
 Ira Lloyd Caughran  
 Donald Everett Cleveland  
 Clarence Everett Clinkscale  
 William E. Coffman  
 Richard H. Cloud  
 Charles B. Codrey  
 Jack Colvard  
 Harry Lee Conway  
 Genevieve Stovall Craig  
 Leroy J. Crowder  
 William Dodson  
 A. L. Douthitt  
 Ronald Dry  
 John W. Fain  
 John Fedricoski  
 Carrol R. Gerhart  
 Alfred D. Gibson  
 Lloyd E. Gibson  
 Ann Gregerson  
 Guy Groom  
 Howard Hadley  
 Jack Hardman  
 Harmon Hardy, Jr.  
 Noel Harris  
 Jim Higeons  
 Bob Hinds  
 Thomas Hixson  
 Frank Horn  
 Robert Horn  
 Robert Huffman  
 Floyd Johnston  
 William E. Kimmons  
 Wanda Kuns  
 Charles L. Kyser  
 Dewey S. Lynch  
 Emmett McCord  
 Fred McDunner  
 William Mattoon  
 James Martin  
 Virgil Martin  
 Charles Masterson  
 Jack Meier  
 Fred Mingo  
 Marion Morgan  
 Fred Murdock  
 Ralph N. Owens  
 Lionel Albert Overbay  
 Joe Parrish  
 Rhoda Florence Pelton  
 Lloyd Pendergraft  
 Eugene Penrod  
 William L. Ramsey  
 Jack Reginato  
 Don Robinson  
 Joe C. Rombach  
 Joe D. Rook  
 Kenneth Harold Ross  
 Jasper Frank Rowdin, Jr.  
 Patsy Rutherford  
 Robert Rutherford  
 Charles Sippy  
 Jerry Southern  
 Paul Spaulding  
 Ralph Leroy Stogsdill  
 Dick Stratton  
 Valentine Synar  
 J. R. Teal  
 Robert Clyde Thompson  
 Stanley M. Trask  
 Cecil L. Vaughn  
 Jack P. Wallace  
 William Eugene Watkins  
 Robert Lee Webb  
 Dale Whitmore  
 Frank L. Wimer  
 James A. Williams  
 Keith K. Williams  
 Paul B. Williams



BILLY JAY WARD—Chelsea, Oklahoma • Civil Engineering.

JAMES C. WARNER—Miami, Oklahoma • Accounting.



FAYE WELCH—Sallisaw, Oklahoma • Business Administration, Sigma Iota Chi, Business Society, Win-Janes.

DOROTHY ANN WELLS—Vinita, Oklahoma • Business Administration, Aggiettes, Business Society.



ROY JAMES WILSON—Wyandotte, Oklahoma • Agriculture, Student Council, Aggies Reporter, Baptist Student Union, International Relations Club Vice-President, Win-Jammers.

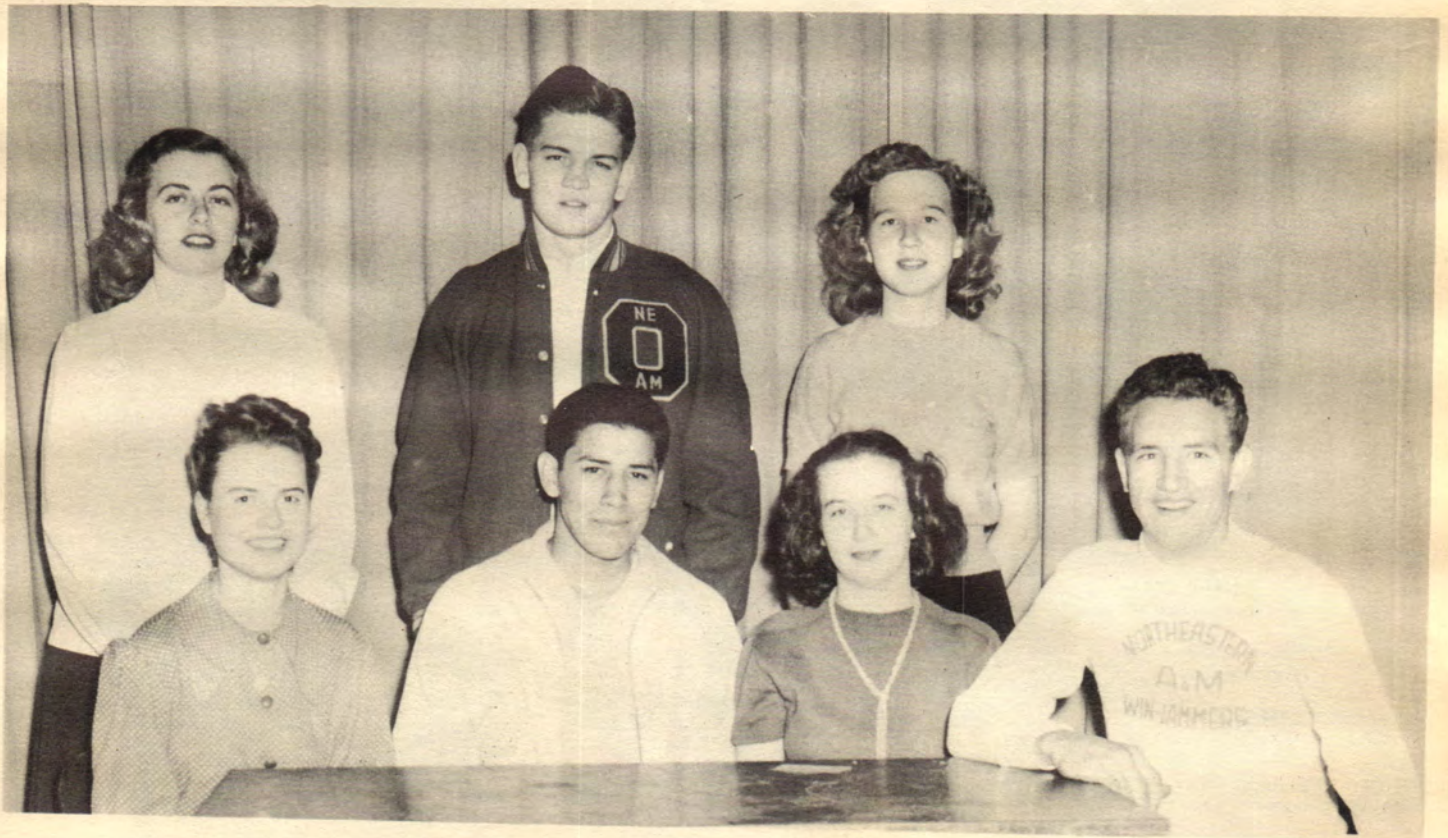
LULA WITTE—Miami, Oklahoma • Art.

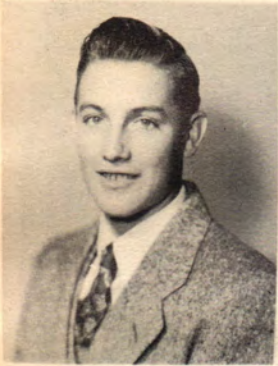
THOMAS J. WORLEY—Commerce, Oklahoma • Pre-Law.

# FRESHMEN



|                      |                                  |
|----------------------|----------------------------------|
| President.....       | LEVI SECONDINE                   |
| Vice-President.....  | BROOKS O'KELLEY                  |
| Secretary.....       | JACQUELINE HICKSON               |
| Treasurer.....       | ANN HIGGENBOTHAM                 |
| Reporter.....        | HELEN O'DELL                     |
| Representatives..... | BARBARA MURPHEY<br>EUGENE CRUZAN |
| Sponsors.....        | HELEN SIMMONS<br>JOHN ELLIOTT    |





GILBERT ARNOLD  
Wyandotte, Oklahoma

MARY ARMSTRONG  
Afton, Oklahoma

LOIS AYRES  
Blue Jacket, Oklahoma

JACK BALL  
Bartlesville, Oklahoma

RAMONA BARKER  
Commerce, Oklahoma

DOROTHY BARTON  
Salina, Oklahoma

LEMUEL BARTON  
Salina, Oklahoma

RAYDEAN BARTON  
Salina, Oklahoma



KEITH BOND  
Tulsa, Oklahoma

DALE BRADFORD  
Pryor, Oklahoma

STEVE BRANNAN  
Nowata, Oklahoma

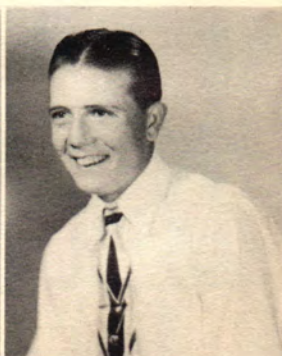
CONRAD BROWN  
Big Cabin, Oklahoma

DEE CARRICO  
Vinita, Oklahoma

BETTIJOE CARROLL  
Joplin, Missouri

NANCY CHASE  
Seneca, Missouri

DONALD CHENOWETH  
Welch, Oklahoma



CLARKE A. COATES  
Tulsa, Oklahoma

JERRY LEE COLE  
Miami, Oklahoma

HARRY LEE CONWAY  
Picher, Oklahoma

BILL COOK  
Seneca, Missouri



GEORGE R. COWHERD  
Tulsa, Oklahoma

ARGYLE ODELL CROAN  
Fairland, Oklahoma

NORMA SUE DARNEL  
Blue Jacket, Oklahoma

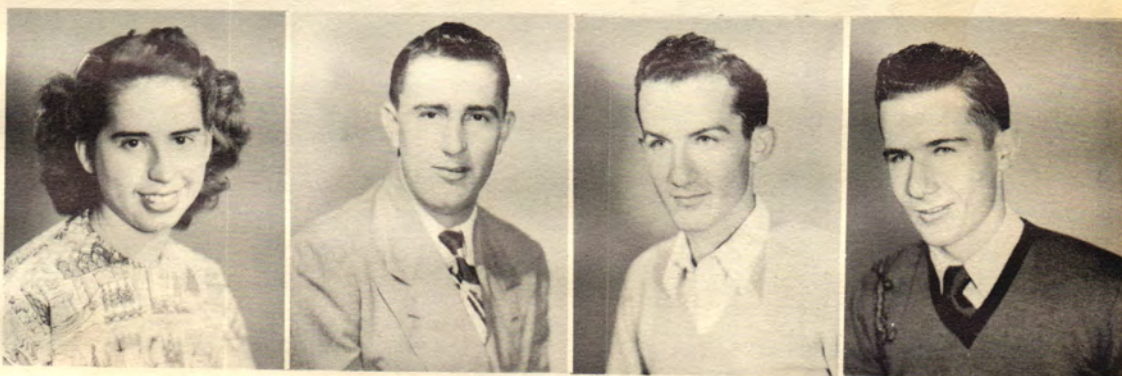
ARPIE LOUISE DENNEY  
Miami, Oklahoma

ANNA LEE DENTON  
Claremore, Oklahoma

ROBERT DENTON  
Anthony, Kansas

DAVID DUNAWAY  
Miami, Oklahoma

JOHN DUNAWAY  
Miami, Oklahoma



BILL EDWARDS  
Miami, Oklahoma

DONALD LEE EDWARDS  
Vinita, Oklahoma

GRADY E. EDWARDS, JR.  
San Fernando, California

DAVID L. FARLEY  
Miami, Oklahoma







GRIFFIN EARL FERGUSON  
Miami, Oklahoma

LOYD FRAZIER  
Oktaha, Oklahoma

MORRIS LEE FRYE  
Miami, Oklahoma

JOE NELLE FURNISH  
Miami, Oklahoma

JAMES R. GIFFORD  
Pryor, Oklahoma  
  
BILL GOODNER  
Miami, Oklahoma  
  
LEON GRAHAM  
Grove, Oklahoma  
  
MARIJANE GREGG  
Miami, Oklahoma



GERALDINE HANAN  
Big Cabin, Oklahoma

FRANK HARGROVE  
Miami, Oklahoma

PEARL HARLAN  
Big Cabin, Oklahoma

BETTE HAYS  
Miami, Oklahoma

DOLLY VIRGINIA HEAPE  
Chelsea, Oklahoma  
  
IRA HEARD  
Jay, Oklahoma  
  
LENA HENDERSON  
Miami, Oklahoma  
  
LEOTA HENSON  
Commerce, Oklahoma

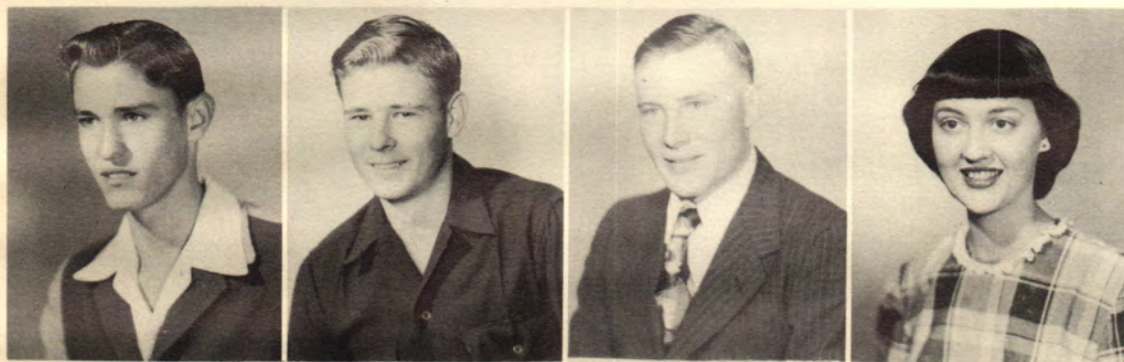
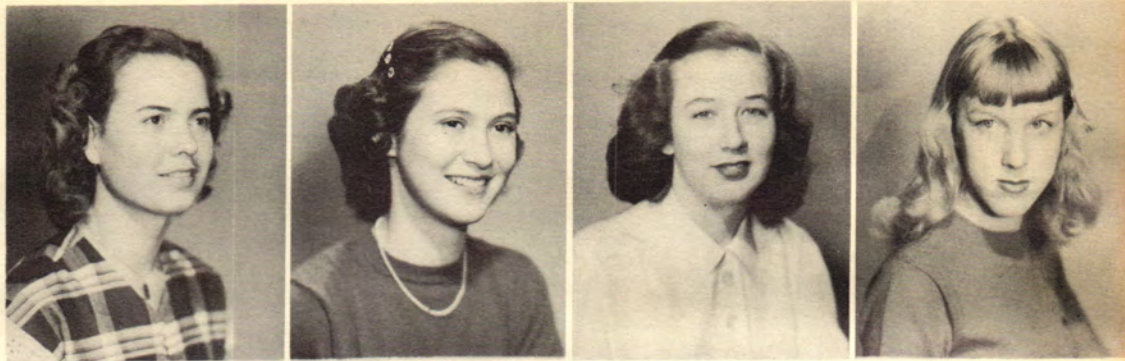


ANN HIGGINBOTHAM  
Miami, Oklahoma

FRANCES HILL  
Miami, Oklahoma

JACQUELINE HIXSON  
Miami, Oklahoma

PAULA HOLBALL  
Nowata, Oklahoma



ESTELL HOLLAND  
Claremore, Oklahoma

BILL HOPKINS  
Vinita, Oklahoma

CARL HOWARD  
Bendavis, Missouri

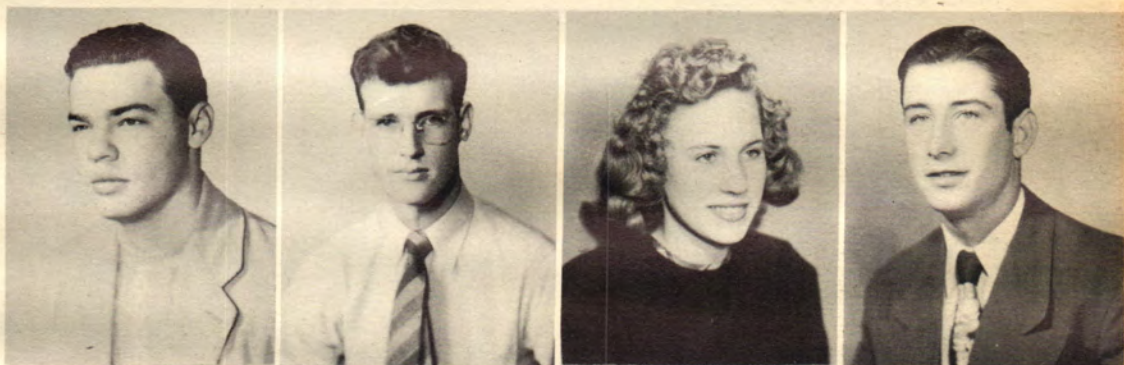
MARIE NANCEAN HUFFORD  
Miami, Oklahoma

CARROL JACKSON  
Miami, Oklahoma

DICK JAMES  
Miami, Oklahoma

NORMA JEAN JENNINGS  
Baxter Springs, Kansas

DEWAYNE JOHNSTON  
Rose, Oklahoma



FRED A. KEYS  
Scammon, Kansas

ALFRED KISER, JR.  
Commerce, Oklahoma

SARAH LOUISE KRAYBILL  
Miami, Oklahoma

GEORGE H. LARKIN  
Sapulpa, Oklahoma



ALLEN LEWIS  
Grove, Oklahoma

JERALYN JUNE LEWIS  
Miami, Oklahoma

GEORGE H. LONG  
Colcord, Oklahoma

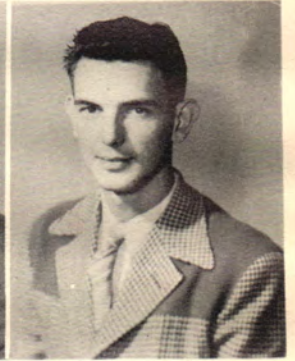
CAROLE JEANNE LOOP  
Miami, Oklahoma

BARBARA McAULEY  
Commerce, Oklahoma

JOHN McCLINTOCK  
Vinita, Oklahoma

BILL McCULLOUGH  
Miami, Oklahoma

ROLLA McGHEE  
Grove, Oklahoma



KENNETH McKINZIE  
Welch, Oklahoma

ROBERT McKISICK  
Vinita, Oklahoma

CARL McMICHEAL  
Holdenville, Oklahoma

TWYLA McNEELY  
Quapaw, Oklahoma



DANIEL MARTIN  
Ketchum, Oklahoma

WAYNE MASON  
Quapaw, Oklahoma

ROBERT MAYS  
Afton, Oklahoma

LEONARD MEGEE  
Seneca, Missouri



RAYMOND MIDKIFF  
Miami, Oklahoma

DORETHERA MAE MILLER  
Berkeley, California

PAULINE MILLER  
Commerce, Oklahoma

ALBERT MINSON  
Vinita, Oklahoma



JOHN MONTGOMERY  
Broken Arrow, Oklahoma

PEGGIE MONTGOMERY  
Fairland, Oklahoma

MARVIN MORRIS  
Miami, Oklahoma

BARBARA MURPHY  
Miami, Oklahoma

LESLIE NELSON  
Miami, Oklahoma

DORIS JEAN NICHOLS  
Miami, Oklahoma

HELEN JANICE O'DELL  
Nowata, Oklahoma

MILFORD NORMAN OSBORNE  
Miami, Oklahoma

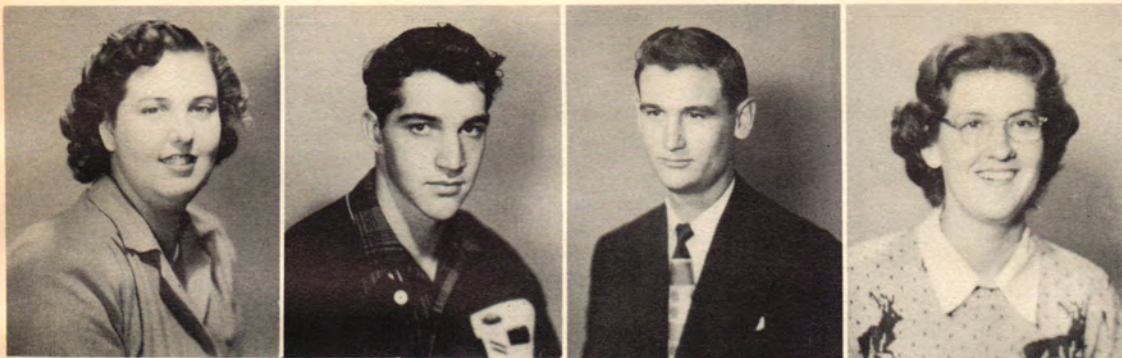


DON CHARLES OWEN  
Tulsa, Oklahoma

MARY HULLINGER OWEN  
Talihina, Oklahoma

KENNETH D. PARKS  
Hominy, Oklahoma

NATHAN PARSONS  
Pryor, Oklahoma



MARGARET MAY PEES  
Miami, Oklahoma

ELBERT MARTIN PETERSON  
Barnsdall, Oklahoma

BILL PICKETT  
Muskogee, Oklahoma

SUZANN PIERSON  
Nowata, Oklahoma

DONALD LEE PORTER  
Miami, Oklahoma

ALDREDGE WAYNE POWELL  
Pryor, Oklahoma

ROBERT EUGENE PUTNAM  
Pryor, Oklahoma

SUE BETH PYAHHUNKAH  
Miami, Oklahoma



ROBERT GENE RANDALL  
Quapaw, Oklahoma

MARY E. RAPER  
Chouteau, Oklahoma

ROBERT ELLIS REED  
Afton, Oklahoma

BOB LEE RENFRO  
Big Cabin, Oklahoma



BARBARA JANE REYNOLDS  
Miami, Oklahoma

BARBARA JEANNE ROBBINS  
Miami, Oklahoma

JAPPIE M. ROBERSON  
Fairland, Oklahoma

VIRGINIA ROUSSEAU  
Miami, Oklahoma



ELEANOR JUNE RYBURN  
Welch, Oklahoma

NANETTE SANGSTER  
Miami, Oklahoma

BILL MORTON SCHUELEIN  
Miami, Oklahoma

ALTON T. SEEM  
Wyandotte, Oklahoma



EDWIN HAROLD SNYDER  
Jay, Oklahoma

BARBARA RHEA SPENCE  
Miami, Oklahoma

DIXIANA SPRAGUE  
Miami, Oklahoma

ELAINE STOWELL  
Joplin, Missouri

LOUIE SURBER  
Wilmer, California

JIMMY LEE SWEET  
Talala, Oklahoma

GENE RAY TERRY  
Hominy, Oklahoma

PEGGY TOMLINSON  
Wyandotte, Oklahoma



ROBERT LESTER VAN LIEW  
Tecumseh, Oklahoma

HELEN JEANNE VANTREASE  
Joplin, Missouri

PATRICK L. WAGNON  
Miami, Oklahoma

MARGARETE LOU WASSON  
Grove, Oklahoma

Robert Adams  
 Billy Armstrong  
 Leroy Ballard  
 Harry Bare  
 Jack Barnes  
 David Bartlett  
 Robb Bartlett  
 J. T. Baxley  
 Gale Black  
 Richard Bland  
 Donald Bennett  
 Luther Berry  
 Gene Bolton  
 Vernon Bond  
 Paul Booth  
 Joe Bowers  
 Billy Bradford  
 Clarence Bradford  
 Margaret Ellen Branson  
 Robert Branson  
 Bill Breedlove  
 Conrad L. Brown  
 Jack Arthur Buckner  
 Leo Bunce  
 Billy Bunch  
 Clyde Burchett  
 Christie Byrd  
 B. R. Campbell  
 Charles M. Cantrell  
 Clarence Roy Capps  
 John Allen Casey  
 Orville Cherry  
 Bob Claibourne  
 C. E. Claibourne  
 Robert Joe Clemons  
 Ray F. Coburn  
 Leroy Cunningham  
 Edwin C. Craig  
 Robert Lee Collins  
 Jim Coody  
 William Cramer  
 Eugene Cruzan  
 Russell Daniels  
 Ray Dareing  
 Lindy B. Davis  
 John Dawson  
 J. D. Delozier  
 Floyd Doughty  
 Don Duncan  
 Mrs. M. A. Duncan  
 Wayman Dunlap  
 Denzel Ray Eaton  
 Luther Edwards  
 Curtis James Farley  
 Jess Felder  
 Edward Fields  
 John W. Fields  
 Johny Lee Finley  
 Johnnie D. Flynn  
 Jesse Ford  
 John L. Froman  
 Robert Wesley Gailey  
 John Gatewood  
 Gerald Gene Glasscox  
 Joe Glenn  
 Marion Albert Goettel  
 Ernest Clyde Goins  
 Johnnie Lewis Goss  
 Robert F. Green  
 Don Edward Gregory  
 Joe Haines  
 Joe Hankins  
 Roger Lee Hammond  
 Emmett Harp  
 Ray Harper  
 William Hawkins  
 James Henson  
 Dale A. Hesterman  
 Robert Hively  
 Dewey Hobson  
 Gene Holland  
 Rendall E. Holland, Jr.  
 Bill Hollis  
 Thomas Hopkins  
 Jack Huddleston  
 Lee Huddleston



HARRY GENE WALKER  
 Baxter Springs, Kansas



ERNEST WEST  
 Welch, Oklahoma



HERBERT WAYNE WESTON  
 Seneca, Mo.



JIM BRUCE WHITCHURCH  
 Nowata, Oklahoma



MARY LOUISE WILLIAMS  
 Miami, Oklahoma



LETHA DELORES WYRICK  
 Miami, Oklahoma

Jarrel Tipton  
 Kenneth Tittle  
 Robert Thompson  
 Everett Wayne Truxal  
 John F. Tyree  
 Bobby Ward Vanderveer  
 Kenneth Leroy Voyles  
 Louise Wagoner  
 Patrick L. Wagoner  
 Anthony Sam Walker  
 Dwayne Walker  
 Thurman J. Walder  
 Lowell P. Walls  
 Cecil Walton  
 Glenn H. Weaver  
 Richard Windle White  
 George S. Whitson

Joe R. Whitson  
 Gene Wininger  
 James D. Williams  
 Perry Arnold Williams  
 Shirley Williams  
 Bill Gordon Wilson  
 Robert Dale Wilson  
 William E. Wilson  
 William H. Winter  
 Eugene James Wood  
 John R. Woods  
 Florence Wright  
 Ross Wright  
 Donald Gene Wyr  
 Hayyr N. York  
 Donald D. Young  
 Dean Hartwell Zilar

Gene Huffman  
 Kenneth Hunter  
 Donald A. Inskip  
 Ermajeon Jackson  
 Gorden Johnston  
 Irvin Arnold Kahn  
 William Kelley  
 Buddy Charles Keirsey  
 Eugene Vance Kieth  
 Bill Kidwell  
 Leo King  
 Walter King, Jr.  
 Robert Kirk  
 Gerald M. Kyser  
 Hazel Langford  
 Burton Lewis, Jr.  
 Carl Lewis  
 Garlin James Longan  
 Eugene Louis  
 Lee Jack Louis  
 Robert Lynch  
 Charles McCall  
 Dale R. McCaw  
 Orville Macklin  
 Maebelle Martin  
 Robert Martin  
 John Meigs  
 Lewis Mill  
 Charles R. Morgan  
 Martin Morre  
 Marvin David Morris  
 Fernando E. Munoz, Jr.  
 Frankie Munoz  
 Leonard Munson  
 Andy Musgrave  
 Roy Myers  
 Robert Newman  
 Charles F. Nichols, Jr.  
 George Edward Nidiffer  
 Brooks O'Kelley  
 Bob Paul  
 Don William Payne  
 Ervin Jackson Pearce  
 Harry J. Phelps  
 Jack Pirtle  
 Leonard A. Piiler  
 Dale E. Proctor  
 Joseph Edward Quick  
 Leonard Ranger  
 Bobby L. Renfro  
 Jack E. Renegar  
 Thomas H. Richardville  
 Robert Harold Richardville  
 Laurence Riseling  
 James C. Roberts  
 Marion Roberts  
 Gerald Roblyer  
 Ted Rupe  
 Jacqui Russell  
 Ross D. Sager  
 Roy H. Sampsel  
 Stanley Sandstrom  
 Bob Seale  
 Melvin J. Scott  
 Thomas Wilson Scaper  
 Eddy Levi Secondine  
 William Shaddox  
 Jack Shaw  
 Johnny Walter Sheppard  
 Roosevelt Sidote  
 Bob Simpson  
 David Sippy  
 Dale Smith  
 Dean Frank Smith  
 J. C. Smith  
 Ora M. Smith  
 Tom Spoonhour  
 Robert Rex Stanley  
 James Chester Staley  
 Bruce Edwin Steddum  
 Bill J. Stepp  
 Dolores Pauline Stockstill  
 Clement W. Stone  
 Charles J. Strayhall  
 Albert B. Stubbmann  
 William Jackson Taylor



MARIJANE GREGG



BILL MOODY

# FOUR OUTSTANDING STUDENTS

As Chosen by the Faculty

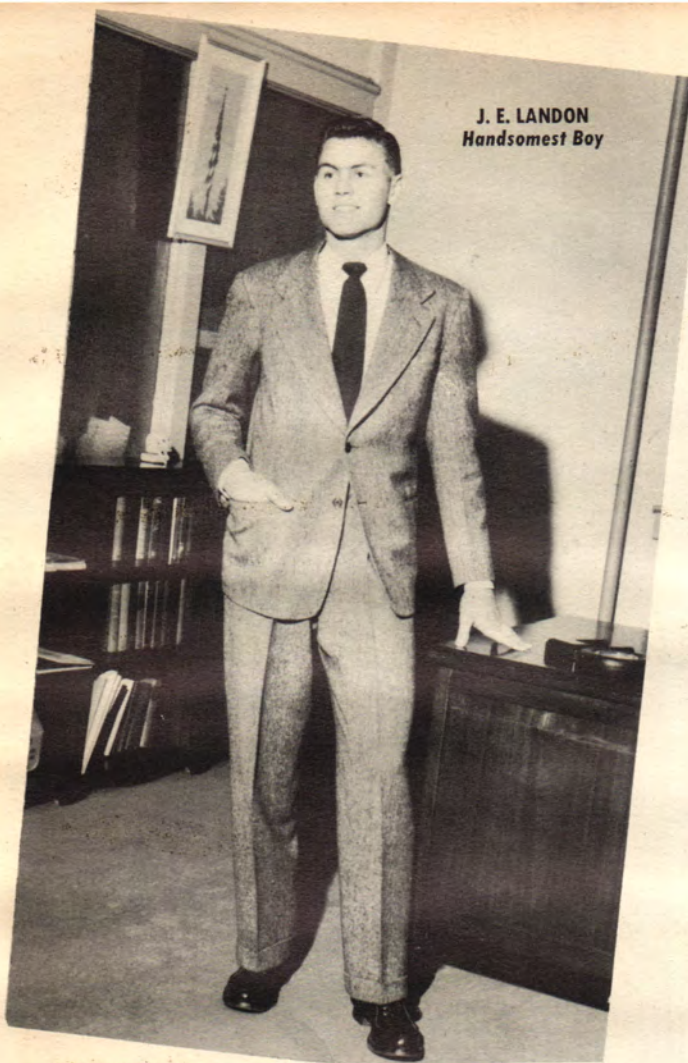
KENNETH CANTWELL

SARAH KRAYBILL





**J. E. LANDON**  
*Handsomest Boy*



**DIXIANNA SPRAGUE**  
*Cutest Girl*



**MARIJANE GREGG**  
*Most Popular Girl*



**JOE KOURI**  
*Most Popular Boy*





**BILL ALLEY**  
*Most Versatile Boy*



**HARRIETT DUNN**  
*Most Versatile Girl*



**BILLYE SUE POYNOR**  
*Girl Most Likely to Succeed*



**BOB THOMPSON**  
*Boy Most Likely to Succeed*

**KEITH BOND**  
*Best Dressed Boy*



**DORIS BROWN**  
*Best Dressed Girl*



**SUZANN PIERSON**  
*Most Athletic Girl*



**FRANK MUNOZ**  
*Most Athletic Boy*

the fine arts

ART  
MUSIC  
SPEECH



# ART DEPARTMENT



As one of the new departments in the college curriculum the art class has caused much interest and comment throughout the year. The course offers practical guidance in art along with the regular course of instruction. Mr. Charles Banks Wilson, head of the department, is a well known painter, lithographer, and book illustrator, and the course he designed introduces the student to those fundamentals necessary for a career in art.

Even those students who do not intend to become professional artists find this class an exciting one for many projects, lectures and exhibitions are specially directed toward the enjoyment and appreciation of fine art. However, one can never experience art through description alone and for this reason the drawings from live models in "Life" class, the graphic experiments with form, texture, perspective, and color are of equal interest to the future artist and the future "esthetic consumer."





The "49ers" this year had the opportunity of visiting Tulsa for the unusual exhibit of paintings by the 20 top ranking American painters. This was a new experience to many of the art students. The same group was also conducted on a tour of the Tulsa University art department by the great American painter and head of the T. U. art staff, Mr. Alexander Hogue.

An additional group of art students was enrolled for the second semester to begin their study of fundamentals while the advanced class was being introduced to the wonders of watercolor.

The extensive college art library was especially chosen by Mr. Wilson who made the book selections while on a trip to Chicago. These books and the other facilities of the art department have done much to assure the hopeful artist of this area an art education with all the "fittings."





**First Semester Officers: Billye Sue Poynor, President; Harry Gene Walker, Vice-President; Ramona Barker, Secretary; Nancean Hufford, Reporter.**

# BAND

The early history of the Northeastern A. & M. Viking Band is shrouded in secrecy. Names of the early bandsmen and band directors are not available but it is generally assumed that NEO A&M began offering Band as an elective course as far back as 1928. During the last global conflict the band was discontinued for the duration. It was reactivated with the arrival of John Houston Wakefield shortly after the cessation of hostilities. He was followed by John W. Elliott in the summer of 1947. This season the band performed at all the home football games, thanks to the cooperation of the weatherman, played for some of the basketball games and was presented several times in the assembly programs. The band also sponsored a revival of the NEO A&M Band Clinic with many of the high school bands in the Tri-State area participating. Mr. Leonard Haug, Director of Bands, University of Oklahoma, was the guest conductor and was assisted by Mr. Elliott. The highlight of this Clinic was the evening concert presented by the group and broadcast over KGLC.



**Back Row: Mr. John Elliott, Ramona Barker, Marijane Gregg, Charline Gross, Bettijoe Carroll.  
 Second Row: Harry Gene Walker, Paula Holbol, Bob Hinds, Morris Lee Frye, Jim Sweet, Eugene Wood, Nancean Hufford, Willis Cunningham, Bob Mays, Wayne Mason, Delores Stockstill.  
 Front Row: Raymond Midkiff, Billye Sue Poynor, Wanda Kuns, Jack Shaw, Bill Edward, Richard White.  
 Second Semester Students not in Picture: Bob Jones, Robert Anderson, John Dawson, Gilbert Miller, Lewis Mills.**



# CHORUS



Seated: Marijane Gregg; Left to Right—First Row: Raydean Barton, Phyllis Keeton, Lois Ayres, Geneva Lakey, Mary Sue Propp, Norma Darnell, Dixiana Sprague, Sarah Louise Kraybill, Jeralyn Lewis, Ann Higgenbotham, Barbara Murphy, Rosemary Grubb, Harriet Dunn, Frances Hill, Dolores Stockstill; Second Row: Kenneth Richards, Director; June Ryburn, Naomi Smith, Wanda Kuns, Carole Loop, Sue Henson, Leota Henderson, Poggie Montgomery, Wayne Mason, Jimmy Sweet, Dale Smith, David Bartlett, Harry Walker, Lemuel Barton, Jack Shaw, Barbara Spence, Elaine Stowell, Shirley McCuskey, Pauline Miller, Barbara McAuley, Bill Edwards, Jess Adams, Leonard Megee, Wayne Powell, Tom Murphy, John Casey, Don Capps, Jack Simpson.

The College Chorus, directed by Mr. Kenneth Richards, joined with the Speech Department in presenting the annual Christmas pageant. Other activities included a choral festival with 250 high school students participating, and a series of concerts before high school assemblies. The music learned by the Chorus during the year, including

sacred and secular numbers, folk music, spirituals, special Christmas songs, and modern music, provided background for advanced choral work.

The college men's quartet has performed for high school and college assemblies and various organizations. New to the campus is the girls' quartet which has made out-of-town as well as local appearances.

## QUARTETS



David Bartlett  
Dale Smith  
Jack Shaw  
Kenneth Richards



Dixiana Sprague  
Sarah Kraybill  
Ann Higginbotham  
Marijane Gregg





# SPEECH

Northeastern Oklahoma A. & M. College

presents

All-College Play

## "Joan Of Lorraine"

by Maxwell Anderson

December 9, 1948

|   |                  |
|---|------------------|
| JIMMY MASTER, the Director (The Inquisitor)   | Glenn Hunter     |
| AL, the Stage Manager                         | Jess Adams       |
| TESSIE, the Assistant Stage Manager           | Jackie Hixon     |
| MARIE, the Costumer                           | Wanda Kuns       |
| ABBEY (Jacques d'Arc) (Cauchon)               | Don Porter       |
| ELLING (Durand Laxart) (Thomas de Courcelles) | J. R. Hall       |
| MARY GREY (Joan)                              | Pat Truman       |
| DOLLNER (Pierre d' Arc)                       | John McClintock  |
| CORDWELL (Jean d' Arc)                        | Jimmy Staley     |
| QUIRKE (St. Michael) (d' Gestivet)            | Clifford Carr    |
| MISS REEVES (St. Catherine)                   | Harriett Dunn    |
| MISS SADLER (St. Margaret)                    | Nancean Hufford  |
| FARWELL (Jean de Metz) (Executioner)          | Calvin Rohmiller |
| GARDER (Bertrand de Poulengy)                 | J. T. Baxley     |
| SHEPPARD (Alain Chartier)                     | Bill Goodner     |
| WARD (The Dauphin)                            | Harry Phelps     |
| MAID  | Jeralyn Lewis    |
| JEFFSON (Georges de Tremoille)                | Jack Simpson     |
| KIPNER (Archbishop of Rheims)                 | Bob Hively       |
| LONG (Dunois)                                 | Leonard Megee    |
| NOBLE (La Hire)                               | Wayne Mason      |
| CHAMPLAIN (Father Massieu)                    | Tom Richardville |
| CHARLIE                                       |                  |



The time is the present.  
The place is any theatre stage during a play rehearsal.



**ACT ONE—**  
Prologue  
SHE FINDS A WAY TO SPEAK  
Interlude I  
A POET AT THE COURT OF THE DAUPHIN  
Interlude II  
JOAN AT ORLEANS  
Interlude III  
Interlude IV

**ACT TWO—**  
Rehearsal Preface  
THE CORONATION AT RHEIMS  
Interlude I  
SHE DEDICATES HER WHITE ARMOR  
Interlude II  
THE TRIAL—THE QUESTION  
Interlude III  
THE TRIAL—JOAN ANSWERS  
Interlude IV  
JOAN ANSWERS

Intermission  
DIRECTOR ..... Ruth Arrington  
Bookholder ..... Barbara Murphy  
Props ..... Barbara McAuley  
Stage Crew ..... Elaine Stowell  
Bill Bess  
Dee Carrico





# VOICE OF N. E. O. A. & M.

Announcer.....BILL ALLEY  
 Junior College.....BILL GOODNER  
 Singers: DALE SMITH, DIXIANA SPRAGUE, SARAH KRAYBILL,  
 DAVID BARTLETT, MARIJANE GREGG

Every Tuesday at 5:30 KGLC presents the radio program  
 for N. E. O. A. & M., the friendly college.  
 \*These weekly shows are arranged by the radio committee.  
 Co-chairmen: Ruth Arrington and Kenneth Richards; members:  
 Mary Jane Speer and Homa Thomas.



CHRISTMAS PROGRAM

*The best part of*

# BEAUTY

*is that which no  
picture can express.*

*-Bacon*

*The University of Tulsa  
... in Oklahoma*

April 12, 1949

Mr. Jack Simpson  
Editor, VIKING  
Northeastern Oklahoma A. & M. College  
Miami, Oklahoma

Dear Jack:

After considerable shifting and re-shifting,  
I have arrived at a decision in the Viking year-  
book queen contest. Sorry all could not be first,

I have selected Miss Frances Jean Hill as  
Queen, and Misses Dixianna Sprague and Doretha  
Miller as Maids of Honor.

Thanking you for the opportunity of making  
this selection, I am

*Sincerely yours,  
Alexandre Hogue*

Alexandre Hogue  
Director, Art Department  
The University of Tulsa



*Viking Queen*  
*Frances Jean Hill*



*Doretha Miller  
Maid of Honor*



*Dixianna Sprague  
Maid of Honor*



*Ann Higgenbotham*



*Peggy Vantrease*



*Doris Brown*

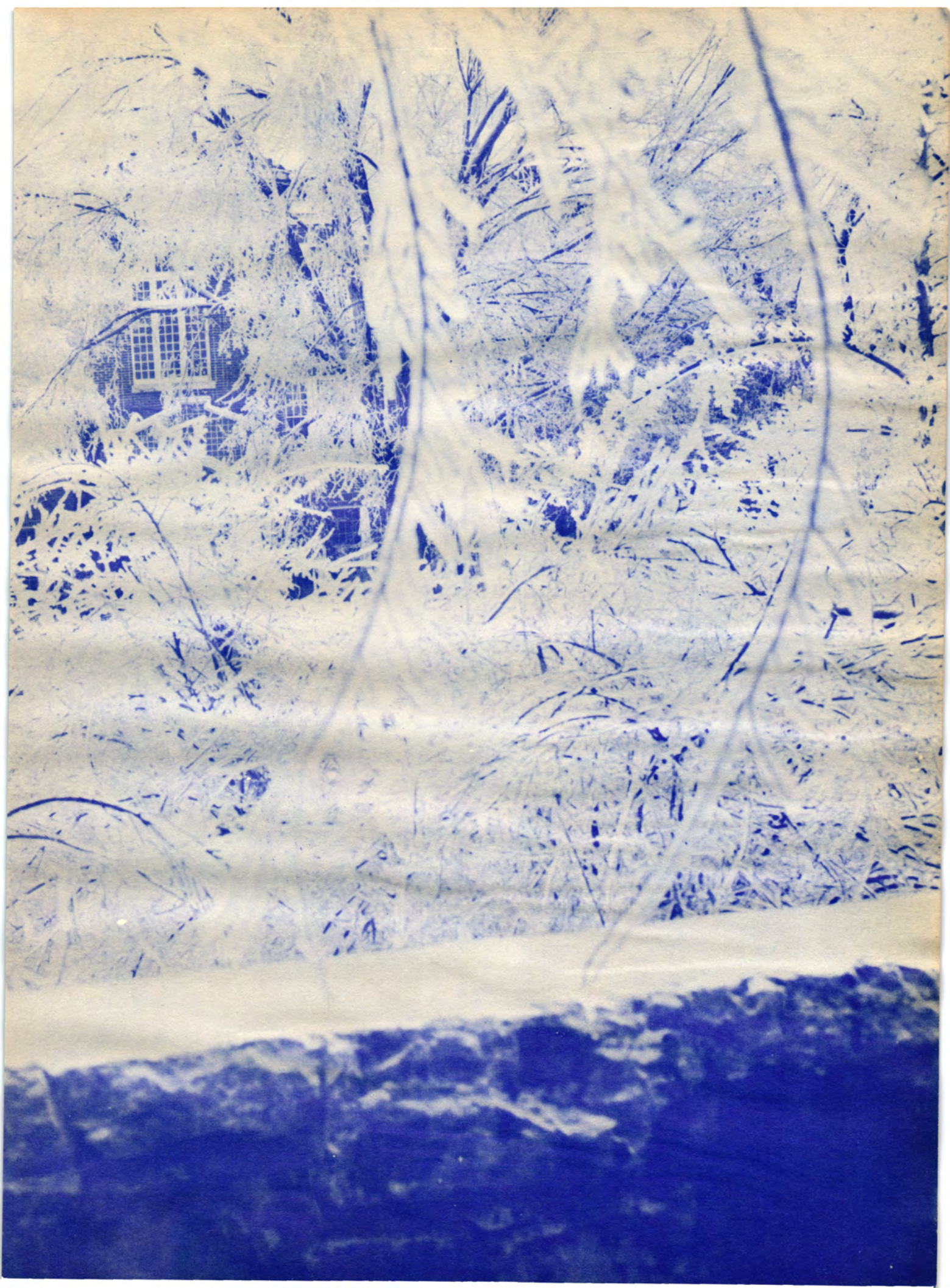


*Jerry Hanan*



*Barbara Reynolds*









*Homecoming Queen*

*Geneva Lakey*



*Maid of Honor*

*Marizane Gregg*

*Maid of Honor*

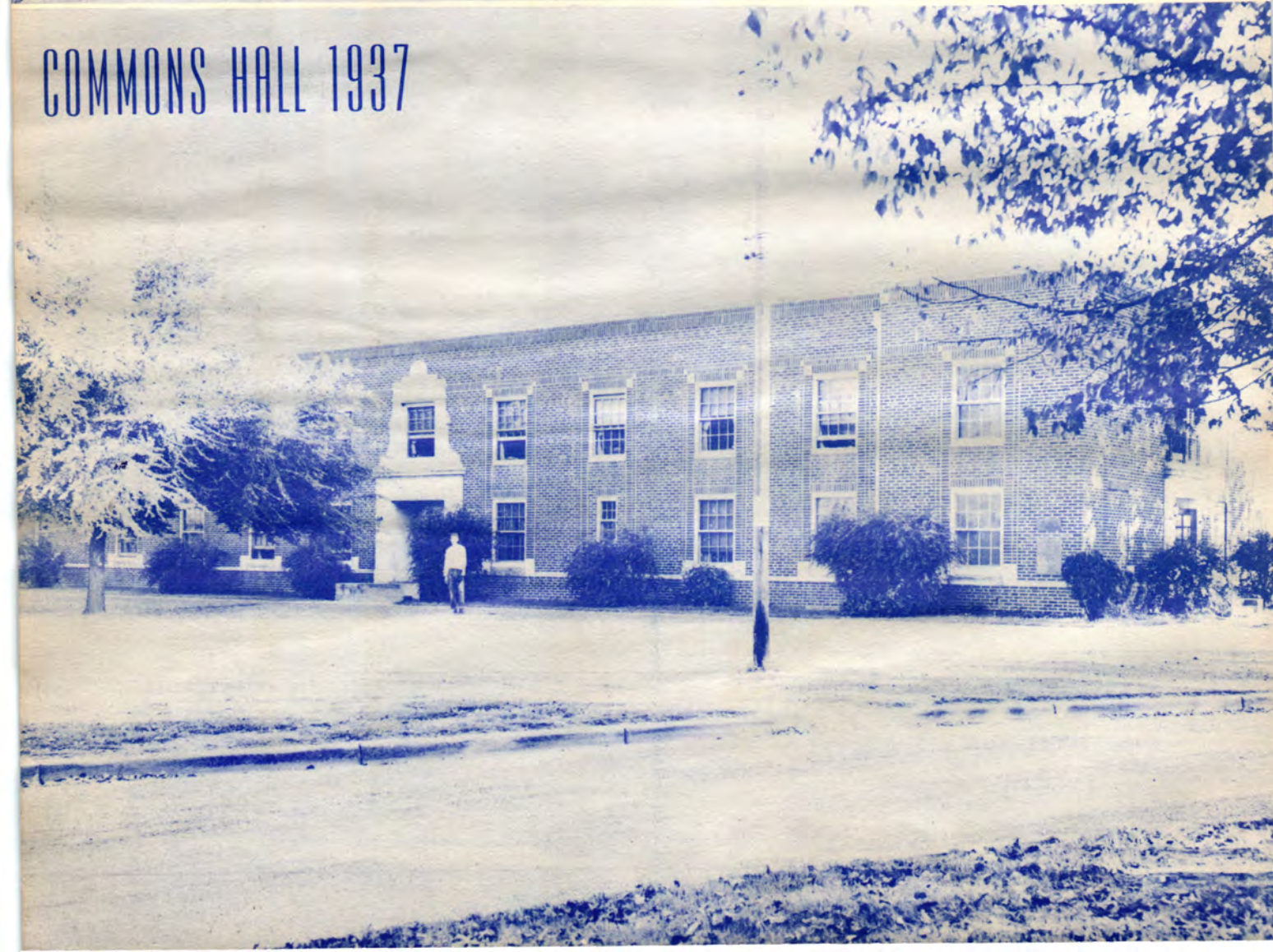
*Mary Matlock*





KAH-NE-YOU-AH HALL 1937

COMMONS HALL 1937



Gammmas  
Aggies  
Phi Theta Kappa  
Student Council  
Phi Sig  
"O" Club  
Norse Wind  
International Relations Club  
Eta Tau Club  
P & U Sigmmas  
Press  
Viking  
Organizations  
Pep  
Club  
tions  
Club

ORGANIZATIONS

STUDENT

COUNCIL



**BILLYE SUE POYNOR**  
Secretary-Treasurer

**RICHARD H. CLOUD**  
Vice-President

**WILLIAM H. MOODY**  
President

THE STUDENT COUNCIL is the governing body of Northeastern Oklahoma A. & M. College. Its main purpose is to establish and maintain co-operation between the administration and the student body. The group is composed of a representative from each organization on the campus. The president, vice-president, and secretary are elected each semester by the student body.

First semester Student Council members were: William H. Moody, president; Richard H. Cloud, vice-president; Billye Sue Poynor, secretary-treasurer; Jess M. Adams, cheer leader; Wayne Truxal, Helen O'Dell, Wanda Kuns, Harriett Dunn, J. E. Landon, Roy Wilson, Clarence Martin, Phyllis Keeton, Gwen Gladden, Helen Malone, Jack Clabaugh, Basil Bond, Sam Grounds, Phyllis Graham, Marshall Smith, Nancy Chase, Hubert Balay, Morris Lee Frye, Carl Legg, Kenneth Ross and Lemuel Barton. Sponsors of the organization are Miss Virginia Lindsey and Mr. Homa Thomas.





**Harriett Dunn**  
Treasurer

**Phyllis Graham**  
Secretary

**Helen Malone**  
Vice-President

**Kenneth R. Cantwell**  
President

**Miss Faye Vann**  
Sponsor

PHI THETA KAPPA is the National Honorary Scholastic Society of Junior Colleges. To be eligible for membership, one must be of good moral character and possess recognized qualities of citizenship as judged by the faculty committee and active members. He must be at the time of election within the upper scholastic ten percent of the

student body and must be carrying at least fifteen hours with a grade average greater than a B.

Mu Chapter was granted a charter December 11, 1926. There are over 100 chapters of Phi Theta Kappa in 41 states and the Panama Canal Zone.



**Sitting:** Barbara McAuley, Helen O'Dell, Dixiana Sprague, Sarah Kraybill, Norma Sue Darnell, Allie Haynes, Nancean Hufford, Harriett Dunn and Kenneth R. Cantwell.

**Standing:** John McClintoch, Helen Malone, Phyllis Graham, Wayne Mason, Albert Minson, Miss Faye Vann, David Bartlett, Bill Alley, A. L. Douthitt, Charles Miller, Morris Lee Frye, William H. Moody, Harry Conway and Pearl Harlan.

**Members not pictured:** Ermajean Jackson, Marijane Gregg, Barbara Spence, Conrad Brown, Clifford Carr, Noel Harris, Barbara Reynolds, Willis Cunningham, Rosemary Grubb, L. A. Bash, Jack Simpson, Charles Straghall, and Dean Smith.

# H M T



**Wilma Parker**  
*National Secretary*

Psi Chapter of ETA UPSILON GAMMA celebrated its twenty-first anniversary in January, 1949. The sorority, founded in 1901 at Christian College, Columbia, Missouri, is the oldest National Junior College Panhellenic Sorority, and Psi Chapter is the oldest Greek letter organization on the campus of Northeastern A. & M.

Weekly meetings are held where emphasis is placed on participation in extra-curricular activities, high scholastic records, and cooperation with the college administration and campus groups.

During the 1948-1949 school year the Gammas rushed both semesters, and in January, 1949, initiated eight members. Following rush in February, five new members were pledged.

Philanthropy is one of the projects of the sorority. During the ensuing school year Psi Chapter has prepared baskets of food and clothing for a needy family at Thanksgiving, Christmas, and Easter.

Two Gammas were chosen as contestants for Viking Queen, Doris Brown, sponsored by the Aggiette Society, and Jerry Hanan, sponsored by the sorority.



**Mary Jane Speer**  
*Sponsor*



**Mary Sue Propp, President; Rosemary Grubb, Secretary; Mary Matlock, Treasurer; Frances Hale, Reporter; Phyllis Keeton, Vice-President.**



STANDING: Phyllis Keeton, Barbara McAuley, Barbara Spence, Mary Mailock, Doris Brown, Gwen Gladden, Barbara Robbins. SECOND ROW: Mary Morgan, Frances Hale, Rosemary Grubb, Jerry Hanan. FRONT ROW: Mary Sue Propp, Mary Jane Speer, Jonelle Furnish, Patsy Hatfield.



Norma Darnell



Bettijoe Carroll



Nanette Sangster



Lois Ayres



Anna Lee Denton





**Charles Stiver**  
*National President*

# H I T



Energetic young men whose chief interest was that of stimulating school spirit organized the oldest standing fraternity on Northeastern Oklahoma A. & M. campus in 1925 as Los Dioblos Blancos. After a few years the war interrupted its active status. Then came the reorganization in October, 1946. Since that time the L. D. B.'s have taken part in many campus activities, fostering good sportsmanship and brotherhood.

In February, 1947, the fraternity was joined with the Eta Iota Tau fraternity—a national junior college organization with chapters at Athens, Tennessee; Potomac State School, Keyser, West Virginia; and Edgewood School, Barrington, Rhode Island.

There are two alumni from our college holding national offices in Eta Iota Tau fraternity.



- HOWARD MEADOWS  
President
- JIM FARLEY  
Vice-President
- BOB REED  
Secretary
- WAYBURN BLANKENSHIP  
Treasurer
- CLARK COATES  
Chaplain
- LEMUEL BARTON  
Sergeant-at-Arms
- JESS ADAMS  
Student Council Representative
- CECIL VAUGHAN  
Reporter
- BILL HUFFMAN  
Pledge Master



**James Denton**  
*National Treasurer*



Φ Σ Ν

- |                       |                                |
|-----------------------|--------------------------------|
| Tom Richardville..... | Vice-President                 |
| Curt McLaughlin.....  | Sergeant-at-Arms               |
| Basil Bond.....       | Student Council Representative |
| Bill Mattoon.....     | Secretary                      |
| Glenn Hunter.....     | President                      |
| Bill Alley.....       | Reporter                       |

The PHI SIGMA NU fraternity during the year 1948-49 has been very active. The fraternity has been engaged in several social and school activities throughout the year. These have included the Christmas and Spring formals, rush parties, and assembly.

Miss Peggie Vantrease was chosen sweetheart of Phi Sigma Nu during the year and was also their queen for the home-coming. She is also Phi Sigma Nu's contestant for Viking Queen.



Bill Goodner, Morris Lee Frye, Bob Green, Jack Dunaway, Charles Sippy, Bill Bess, J. T. Baxley, Lynn Ranger, Keith Bond, Carroll Jackson, Bob Branson, Bill Alley, Tom Richardville, Curt McLaughlin, Glenn Hunter, Basil Bond, Bill Mattoon.

# ΣIX



|           |                                     |                   |
|-----------|-------------------------------------|-------------------|
| Officers: | Worthy Matron .....                 | Harriett Dunn     |
|           | Worthy Protectress .....            | Billye Sue Poynor |
|           | Worthy Scribe .....                 | Ann Gregerson     |
|           | Worthy Keeper of the Treasury ..... | Betty Housman     |
|           | Worthy Pledge Directress .....      | Delphia Conner    |
|           | Worthy Representative .....         | Wanda Kuns        |





**(Left to right) BACK ROW:** Mary Louise Williams, Dorethea Miller, Jeralyn Lewis, Marijane Gregg, Barbara Reynolds, Delphia Conner, Virginia Bryan, Harriett Dunn, Billye Sue Poynor, Suzanne Pierson, Nancean Huffard, Jean Nichols.

**FRONT ROW:** Betty Housman, Jackie Hixon, Dixiana Sprague, Wanda Kuns, Faye Welch, Peggie Vantrease, Paula Holbol, Nancy Chase, Shirley McCuskey, Helen O'Dell, Frances Jeanne Hill.

**NOT PICTURED:** Ann Gregerson.

SIGMA IOTA CHI Sorority was founded in 1903 with its first chapter in Alexandria, Louisiana. There are now 13 active chapters located in 9 different states. Tau chapter was organized on this campus in 1928, and since that time has held a place of honor and distinction in the hearts of the faculty and student body. The 1948-49 school term has been its most happy and successful year.

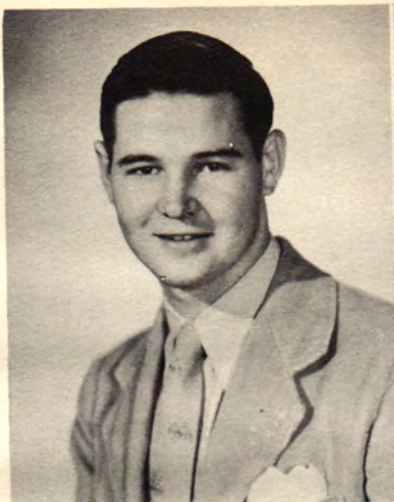
One of the high spots in the campus social life was the tea honoring the Faculty, which was given by the active and alumnae chapters in the Banquet Room of the Hotel Miami. The Annual Christmas Formal, held at the Country Club on December 17, was the climax of the first semester activities.

Sigmas have been leaders in all campus activities. Billye Sue Poynor was elected Student Council Secretary and Band President, Marijane Gregg was selected by the Faculty as one of the outstanding students, and Dixiana Sprague was chosen Engineers Queen. Eight Sigmas reigned as Queens of floats in the Homecoming Parade, while four Sigmas were elected as outstanding by the Student Body in the annual popularity poll. Sigmas displayed their ability in the all-school play, the band, and chorus and quartette, as well as by serving as officers of various campus organizations.



**GLADYS Y. COPEN**  
Sponsor

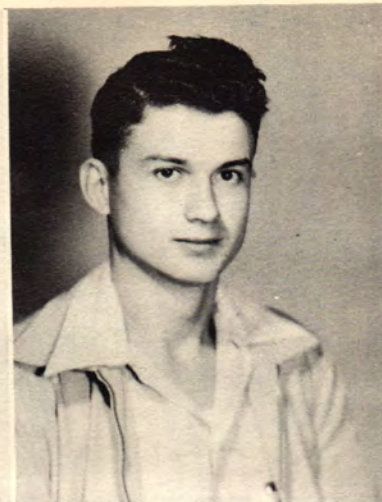
# THE VIKING STAFF



**JACK SIMPSON**  
Editor



**BILL MOODY**  
Associate Editor



**MORRIS LEE FRYE**  
Business Manager

A yearbook called the VIKING—just another yearbook made with planning, organizing, working, cutting, pasting, and writing. Just another yearbook? No. OUR yearbook, made with care, made with plans and results, and, yes, perhaps made with tenderness.

The VIKING staff has worked hard at producing this book for the students and for the faculty. We tired of working at times. We were discouraged at times. But, more often, we enjoyed our

work, found pleasure in making up these pages, cutting pictures to pieces, and gathering information.

The staff presents its thanks to Mrs. Etta R. Bruton, editorial advisor; Mr. Charles Banks Wilson, art advisor; and Mr. Homa Thomas, financial advisor, all of whom contributed greatly to the production of the VIKING. The staff wishes to thank also the students and faculty members for their cooperation in gathering yearbook material.

Pictured below is the VIKING staff. Reading from left to right it consists of (standing) B. J. Garrison, Robert Greene, Leonard Ranger, Robert Benson, Bill Moody, Sue Henson, Helen O'Dell, Nancy Chase; (seated) Wanda Kuns, Phyllis Keeton, Rosemary Grubb, Jack Simpson, Suzann Pierson, and Barbara McAuley. Staff members not pictured are Robert Branson, Morris Lee Frye, and J. T. Baxley.





# PRESS CLUB

Left to right: Bill Butefish; Bob Thompson, president; Max Buzzard, vice-president; Helen O'Dell, corresponding secretary; and Marijane Gregg, recording secretary. Not pictured: Marshall Smith, student council representative.

The PRESS CLUB is in its third year as an organization at Northeastern Oklahoma A. & M. College. The club fosters school spirit by encouraging and participating in Homecoming, student government, social activities, Intramurals, and any worthwhile cultural programs being carried on. Its membership is made up of the journalism classes, members of the Norse Wind staff, and former journalism students

and staff members.

In Intramural athletics the Press were runners-up in basketball and softball in 1948, won championship crown in basketball this year.

A big event of April 1949 was the "Newspaper Workshop" which brought to the campus many high schools and sponsors of newspapers in this section.



FRANCES JEAN HILL  
Homecoming Queen



Back row: Bill Trisdale, Jerry Southern, Jack Meiers, Ray Harper, Max Buzzard, Cecil Vaughan, Bill Watkins, Curt McLaughlin, Dan Martin, Bill Goodner, Bill Butefish, Kenneth Williams, Bob Thompson, Eugene Keith, Ray Vanderburg, faculty sponsor.

Middle row: Elaine Stowell, Jackie Hixson, Frances Jean Hill, Nancy Chase, Marijane Gregg, Shirley McCuskey, and Mary Williams.

Front row: Kenneth Ross, Morris Lee Frye, Tom Richardville, Bob Reed, Herb Spratt, Bob Benson, and Charles Kyser.

Members not pictured include Jack Reginato, Tom Spoonhour, William Kelly, Dale McCall, Emerson Black, Dick Cloud, Lindy Davis, Delphia Conner, Gerald Risner, Luther Edwards, Marshall Smith and Jack Simpson.

# NORSE WIND

STUDENT PUBLICATION OF NORTHEASTERN OKLAHOMA A. & M. COLLEGE



**BILL ALLEY**  
Managing Editor



**JACK SIMPSON**  
Associate Editor



**MARIJANE GREGG**  
Society Editor



**B. J. GARRISON**  
Staff Photographer



**MARY JANE SPEER**  
Alumni Editor



The male members of the Norse Wind staff knew the girls close their eyes to many press room goings-on, but didn't think they'd close their eyes in front of the camera.

Pictured from left to right, the staff includes (sitting) Marijane Gregg, Society Editor; Bill Alley, Managing Editor; Jack Simpson, Associate Editor; J. T. Baxley, Sports Editor, not individually pictured on the page; (standing) Bob Benson, Circulation; B. J. Garrison, Staff Photographer; Herb Spratt, Circulation; Paula Holboll, Chief Typist; and Keith Bond, Advertising Manager.



**KEITH BOND**  
Advertising Manager



**HERB SPRATT**  
Circulation



**BOB BENSON**  
Circulation



**RAY VANDERBURG**  
Faculty Advisor



**PAULA HOLBOLL**  
Chief Typist

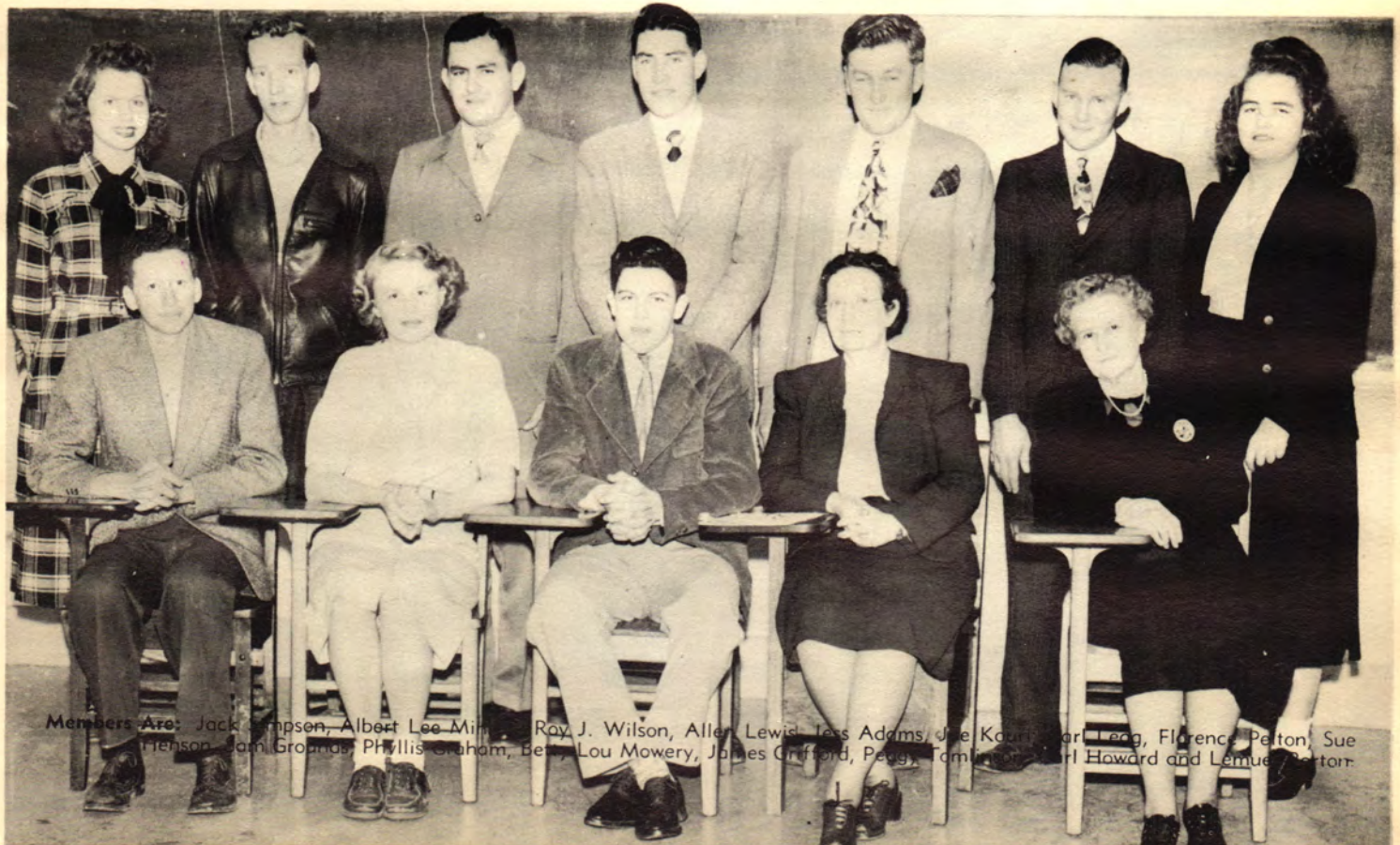
# INTERNATIONAL RELATIONS CLUB



|   |                |
|---|----------------|
| <i>President</i> .....                      | Phyllis Graham |
| <i>First Vice-President</i> .....           | Jess Adams     |
| <i>Second Vice-President</i> .....          | Roy Wilson     |
| <i>Secretary-Treasurer</i> .....            | Ruth Pelton    |
| <i>Student Council Representative</i> ..... | Carl Legg      |
| <i>Reporter</i> .....                       | Jack Simpson   |



The International Relations Club, under the sponsorship of Miss Virginia Lindsey, is working under the Carnegie Endowment for International Peace. The purpose of the club is to study all phases of international affairs. Membership in this organization is open to anyone interested in social, economic, religious and political discussions.



Members Are: Jack Simpson, Albert Lee Minton, Roy J. Wilson, Allen Lewis, Jess Adams, Joe Kouri, Carl Legg, Florence Pelton, Sue Henson, Sam Grounis, Phyllis Graham, Betty Lou Mowery, James Griford, Peggy Tomlinson, Carl Howard and Lemuel Bertor



# E N G I N E E R S



The ENGINEERS SOCIETY is one of the largest and most active organizations on the campus of Northeastern Oklahoma A. & M. College. The Society was organized in September, 1946, for the purpose of acquainting students of engineering and industrial arts with actual engineering and shop practices.

Under the guidance of Oren E. Need and Ted E. Wiehe, sponsors of the organization, the Engineers have made several inspection trips through actual engineering projects and plants to supplement their academic studies.

The highlight of the Engineers' activities was the annual St. Patrick's Day festivities. Engineering instructors from the University of Oklahoma and from Oklahoma A. & M. College delivered educational lectures and several engineering demonstrations. The Engineers' formal dance was held March 16, in the college gymnasium. The climax of the evening came when president James E. Lowry crowned Miss Dixiana Sprague as Queen of the Engineers to reign during the succeeding year. On March 17, the Engineers held their annual banquet.

Several members of the Engineers' Society have attained outstanding positions during the 1948-49 school year. Among them were William H. Moody, president of the Student Council for two semesters, Kenneth R. Cantwell, president of Phi Theta Kappa for the year, and three of the four outstanding students as chosen by the faculty. These were Marijane Gregg, Kenneth R. Cantwell and William H. Moody.



MISS MARIJANE GREGG  
Engineer's Queen, 1948



MISS DIXIANA SPRAGUE  
Engineer's Queen, 1949



Officers for the first semester were: Bill Morris, president; Kenneth Cantwell, vice-president; William H. Moody, secretary; Bill Gruenberg, treasurer; Harry Henson, chaplain; Marijane Gregg, reporter; James E. Lowry, sergeant-at-arms; and Jack Clabaugh, student council representative.

Officers for the second semester are: James E. Lowry, president; Jack Hopkins, vice-president; William H. Moody, secretary; Bill Gruenberg, treasurer; Harry Henson, chaplain; Willis Cunningham, reporter; Bill Jones, sergeant-at-arms; and Virgil Martin, student council representative.

Members: Henry Adair, Hubert Balay, David Bartlett, Leroy Bash, Wayburn Blankenship, Clarence Bradford, Dale Bradford, Steve Brannon, R. D. Branson, Jack Buckner, Morgan Burgin, Kenneth Cantwell, Clarence Capps, Jerry Cole, Harry Conway, Willis Cunningham, A. L. Douthitt, Grady Edwards, John Gateway, Carrol Gerhart, Lloyd Gibson, Gerald Glasscox, Johnny Goss, Marijane Gregg, Don Gregory, Guy Groom, Bill Gruenberg, Harmon Hardy, Ina Lou Haslett, Allie Haynes, Julius Hecksher, Harry Henson, Bill Hopkins, Jack Hopkins, Bill Jones, Buddy Keirsey, Joe Kiesel, Alfred Kiser, Gerald Kyser, George Long, James E. Lowry, Darrel Maltzberger, Helen Malone, Dale Martin, Virgil Martin, Leonard Megee, Fred McDunner, Raymond Midkiff, Louis Millhollin, Louis Mills, Bill Morris, Fred Murdock, Oren E. Need, Leslie Nelson, Arthur Page, Nathan Parsons, Robert Pirkey, Robert Putnam, Bill Ramsey, Leonard Ranger, Jack Renegar, R. F. Rutherford, Marvin Scott, Tehi Secundino, Alton Seems, Jerry Southern, Paul Spaulding, Rex Stanley, Roy Strait, Harold Snyder, J. R. Teal, Stanley Trask, Wayne Truxal, Wayne Tyree, Cical Walton, Bob Webb, Wayne Weston, Jim Whitchurch, Ted Wiehe, Perry Williams, William Winter, Eugene Wood, Donald Wyer, Don Porter, Jack Clabaugh, William H. Moody, Basil Kissire, Bill Ward, George Scholes, Joe Whitson, John Dawson.



ENGINEER'S FLOAT  
1st Place Winner—  
Homecoming Parade



# BUSINESS SOCIETY

Left to Right: Morris L. Frye, Student Council Representative; Fay Beebe, Reporter; Charles Miller, President; Rosemary Grubb, Corresponding Secretary; Calvin E. Rohmiller, Vice-President; Ann Gregerson, Recording Secretary (not pictured).

The newest organization on the campus is the BUSINESS SOCIETY organized in September, 1948. It is composed of students carrying six or more hours of commercial courses, and has grown during the year from a membership of thirty to eighty. It is sponsored by Mrs. Gladys Copen and Mr. Homa Thomas.

The Business Society's basketball and softball teams have participated in the intramural program of the college. The Society also boasts a winning bowling team. An outstanding event of the year was a field trip to Tulsa where the Business Society made a tour of the offices of the American Airlines and the Oklahoma Natural Gas Company. Lectures and a banquet were other activities of the year.



Left to Right, First Row: Dee Carrico, Robert Benson, Keith Bond, Bill Alley, Dale Martin, J. C. Warner, Herbert Spratt, Calvin E. Rohmiller; Second Row: Doris Brown, Betty Housman, Rosemary Grubb, Mary Sue Propp, Patsy Hatfield, Mrs. Copen, Fay Beebe, Wanda Kuns, Pearl Harlan, Billye Sue Poynor; Third Row: Sue Henson, Jean Nix, Jerry Hanan, Frances Hale, Dorothy Wells, Charles Miller, Johnny McComb, George Haney, George Reno, Mr. Thomas; Fourth Row: Morris Frye, Bill Beebe, Albert Minson, Bill Coffman, Allan Lewis, Conrad Brown.



# BAPTIST STUDENT UNION

**OFFICERS:** James Gifford, *treasurer*; Clarence Martin, *president*; Margie Pees, *publicity*; Paul Jagers, *vice-president*; Wayne Powell, *chorister*; Gwen Gladden, *devotional chairman*; Virginia Heape, *secretary*; and Barbara Spence, *pianist*.

**Other Officers:** Jim Higeons, *Sunday School*; Naomi Smith, *Y. W. C. A.*; Jim Pees, *B. T. U.*; Roy Wilson, *Student Council Representative*; Barbara Murphy, *Social Chairman*; and Harry Walker, *extension director*.

The BAPTIST STUDENT UNION is an organization for all students no matter what their religious preference. It was organized for the purpose of establishing a union between the church and the students attending college.



**Back Row:** Kenneth Cantwell, Jim Pees, Virginia Heape, Barbara Spence, Gwen Gladden, Pauline Emarthla, and Don Dyer, *sponsor*.

**Middle Row:** Jim Higeons, Polly Pat Gilbert, Wayburn Blankenship, Margie Pees, Allie Haynes, and Clarence Martin.

**Front Row:** Paul Jagers, James Gifford, Dale Proctor, Wayne Powell, and Donnie Dyer.

**Not pictured:** Mary Alice Armstrong, Gilbert Arnold, Dorothy Barton, Raydean Barton, Lemuel Barton, Don Chenoweth, Sam Grounds, Lena Mae Henderson, Don Inskeep, Barbara McAuley, Albert Minson, Peggy Montgomery, Barbara Murphy, June Ryburn, Barbara Robbins, Naomi Smith, Peggie Tomlinson, Harry Walker, Margarete Wasson, Roy Wilson, and Don Young.

# AGGIES



Front Row: Joe Kouri, Jim Higeons, Clarence Martin, Jim Pees, Leroy Crowder, Richard Cloud.  
 Second Row: Lewis Jack, Billy Bunch, Gene Terry, Kenneth Parks, Joe Haines, Ray Harpe, Joe Muskrat.  
 Third Row: Sam Grounds, Wilford Barnett, Harry York, Norman Mills, Teddy Legako, Freddy Gay, Donald Inskip, Denneth Ritter, Donald Young.  
 Fourth Row: Ralph Owen, Brooks O'Kelly, Dewey Hobson, Louie Serber, Lloyd Frazier, Waymon Dunlap, Gene Bolton, Bill Matoon.  
 Fifth Row: Paul Jagers, Carson B. Roberts, Roy Wilson, Gilbert Arnold, Wayne Powell, Carl Legg, James Gifford, Harry Synar, Bill Pickett, Ernest West.



First Semester Officers: Joe Kouri, President; Paul Jagers, Vice-President; Clarence Martin, Secretary and Treasurer; Roy Wilson, Reporter; Harry Synar, Sponsor; Sam Grounds, Student Council.



Second Semester Officers: Sam Grounds, President; Carl Legg, Vice-President; Val Synar, Secretary and Treasurer; Joe Kouri, Student Council; Richard Cloud, Reporter; Harry Synar, Sponsor; Marvin Wood, Sponsor; Dr. Smith, Veterinarian.



Marvin Wood's Soil Conservation class visits Kickapoo Prairie, Springfield, Missouri.

The AGGIE club was organized by Agriculture students in the fall of 1946. In October 1947 the name was changed to The Aggie Society of NEO A&M College.

The purpose of the society is to promote education, co-operation and a spirit of fellowship among agriculture students.

Social and educational activities include the following annual events:

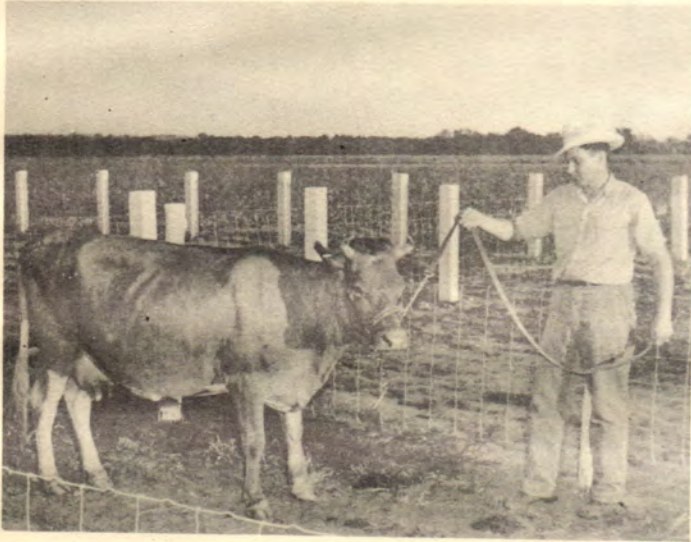
Fall semester dinner and dance.

Spring aggie picnic at Grand Lake.

Soil Conservation day, Springfield, Missouri.

Livestock Judging, Muskogee, Tulsa, Oklahoma City, and Joplin, Mo.

Animal Husbandry and Agronomy judging, Stillwater.



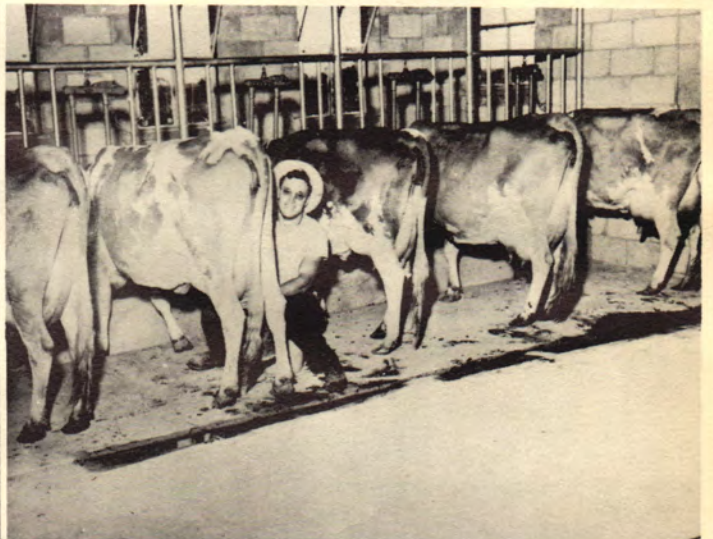
Harry Synar, holding one of the pedigreed Guernsey cattle of the college farm.



Part of the Guernsey dairy herd, and farm buildings at the college farm.



Dr. Conrad Smith, Veterinarian, inspecting Spermatozoa in the Agriculture Laboratory.



Clarence Martin milking one of the cows of the college dairy herd.

# AGGIETTES



**President.....Shirley Smith**  
**Vice-President.....Charlene Gross**  
**Secretary-Treasurer.....Geneva Lakey**  
**Student Council Representative.....Gwen Gladden**  
**Reporter.....Phyllis Graham**

This group was organized in the fall of 1946. The Aggieettes serve as a sister organization to the Aggie Society. They strive to develop and promote standards of home and family life for home economics majors. They also urge students to prepare themselves for a home economics profession. Social events are given during the year to add to their interest in the department.



*Sitting: Bettijoe Carrol, Doris Brown, Dorothy Wells, Mrs. Mabel Speaker (sponsor), Shirley Smith, Charline Gross, Geneva Lakey, Mary Morgan, Cleota Swaengin.*

*Standing: Peggy Tomlinson, Margie Pees, Phyllis Graham, Mary Sue Propp, Patsy Hatfield, Jerry Hanan, Betty Mowery, Gwen Gladden, Barbara Robbins, Margarete Wasson.*

*New members the second semester are: Barbara Murphy, Dorothy Barton, Ann Higginbotham, Nanette Sangster, Peggy Montgomery, Anna Denton, Raydean Barton, Lois Ayres, Lena Mae Henderson, Mary Armstrong, J. Nelle Furnish, Jackie Hixon.*



The Pep Club at Northeastern Oklahoma A. & M. College was reorganized in September of 1948 as "WIN-JANES" and "WIN-JAMMERS," the names given to the boys' and girls' sections, each having a separate constitution.

The Win-Janes and Win-Jammers were formed because of a need to foster good sportsmanlike conduct and give verbal support to the various sports activities ensuing throughout the year 1948-49.

The Pep Club members can be recognized on the campus by their distinctive white sweaters with the blue letters identifying their school and organization. Their crowning features are blue fatigue hats with the white initials N. E. O. A. & M. on the brim.

*Suzann Pierson, Jess Adams, Marijane Gregg, Pearl Harlan, Anna Lee Denton, Harriet Dunn, Lena Mae Henderson, Peggy Montgomery, Donald Cleveland, Lewis Mills, Bill Moody, George Reno, Peggy Tomlison, Jean Nix, Joe Kouri, Bill Gruenburg, Kenneth Cantwell, Carl Legg, Roy Wilson, Sam Grounds, Brooks O'Kelley, Dale Martin, Robert Reed, and Calvin Roemiller.*



**SUZANN PIERSON**  
President

**CHARLINE GROSS**  
Vice-President

**PHYLLIS KEETON**  
Secretary-Treasurer

**SAM GROUNDS**  
President

**BILL PICKET**  
Vice-President

**CLARENCE MARTIN**  
Secretary-Treasurer

*Sue Beth Pyahhunkah, Jess Adams, Suzann Pierson, James Staley*





Since 1944, under the able guidance of athletic director S. A. "Red" Robertson, the "O" CLUB has become one of the outstanding organizations on the campus.

A student may become a member of the "O" Club by lettering in any varsity sport sponsored by the college. Initiation in the spring entitles the letterman to full membership in the club.

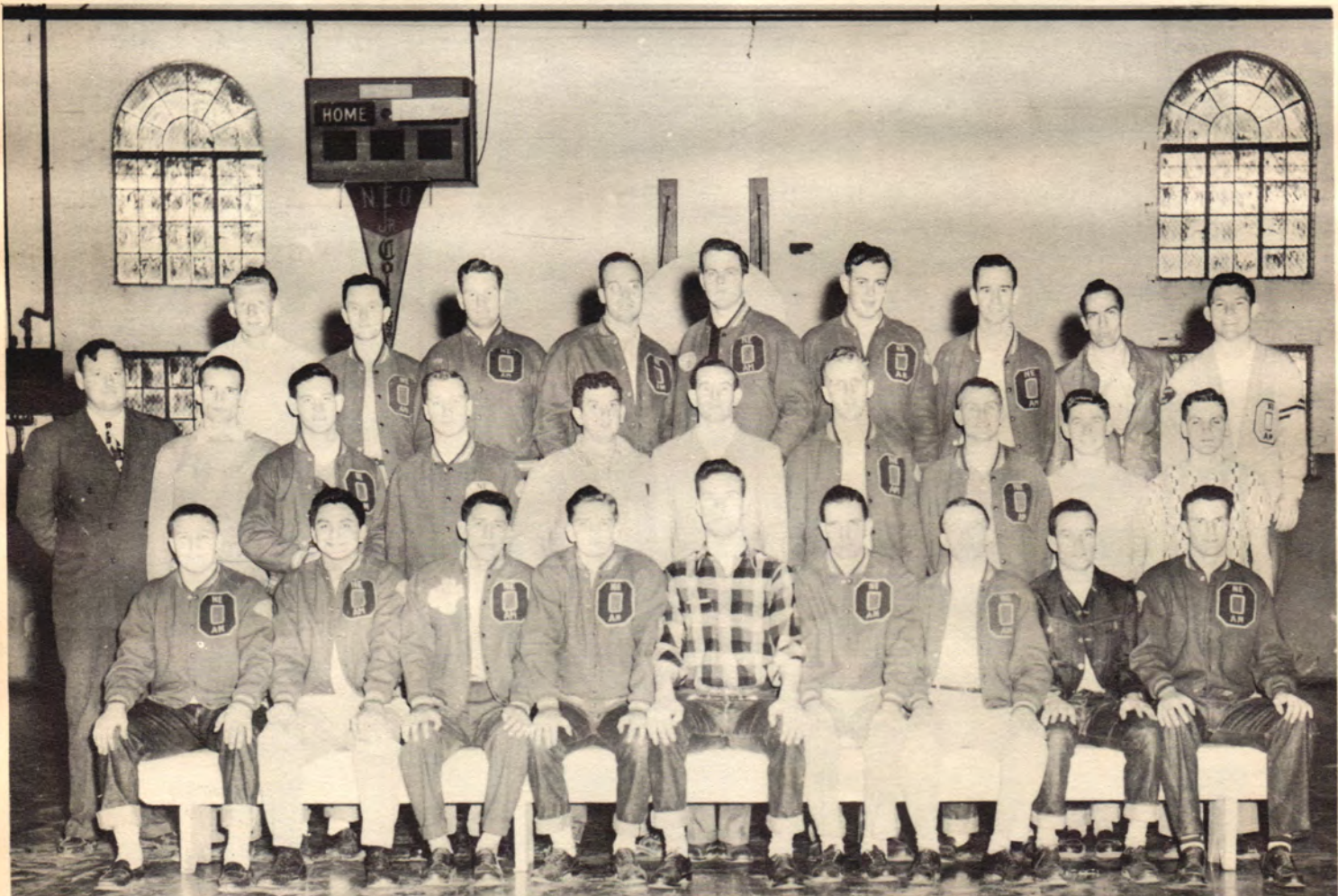
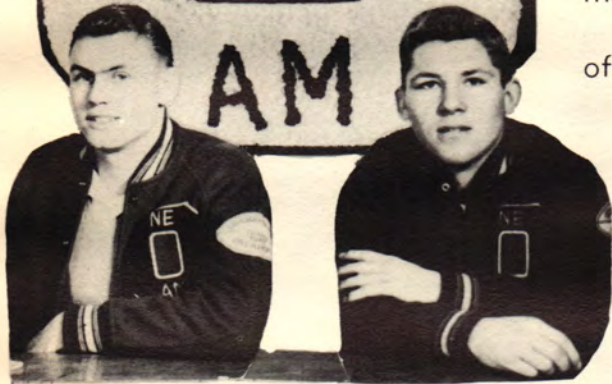
The "O" club plays host to athletes from other schools and promotes high school basketball tournaments and track meets.

The "Esprit de Corps" of the organization is that of promoting sportsmanship on the campus.

**J. E. LANDON**  
President

**J. W. BREWINGTON**  
Vice-President

*Leo King, Tehi Secundine, Eugene Cruzan, Bob Collins, Bob Claibourne, Gene Holland, Johnny Sheppard, Bob VanLiew, Andy Musgrave, Bill Cook, Martin Moore, Lindy Davis, Bob Paul, Paul Williams, Dick Stratton, J. E. Landon, Clyde Goins, Wayne Truxall, Max Buzzard, Marshall Smith, Ted Rupe, Jack Hopkins, Curtis McLaughlin, Ronald Dry, Bob Thompson, Bob Collins and J. W. Brewington.*



# SPORTS





JESS FRONTERHOUSE

S. A. ROBERTSON

C. C. RIGNEY

If, at the end of the 1948 football season, you saw weary, bedraggled, happy, strutting individuals on the campus, you probably guessed them to be Viking football players. They had a right to be weary. They had fought hard. They had a right to strut. They had won the state championship and the Salt Bowl game.

Coaches "Red" Robertson, Jess Fronterhouse, and C. C. Rigney steered the Vikings to the Oklahoma championship and engineered a 34-0 victory over the Colorado champion Trinidad Trojans in the second annual Salt Bowl at Hutchinson, Kansas.

The Vikings opened the fall campaign against the Coffeyville Ravens, with a leaky pass defense spelling a 20-7 defeat. Conference play found the Vikings downing the Connors Aggies a week later, 13-0. The Bacone Indians started a war party at the wrong time as the Norse scalped them at Muskogee 45-0, October 8.

Little Rock squeezed by 18-13 at College stadium a week later. At Wilburton the Vikings were ambushed by the Eastern Mountaineers in their second conference outing, 21-14.

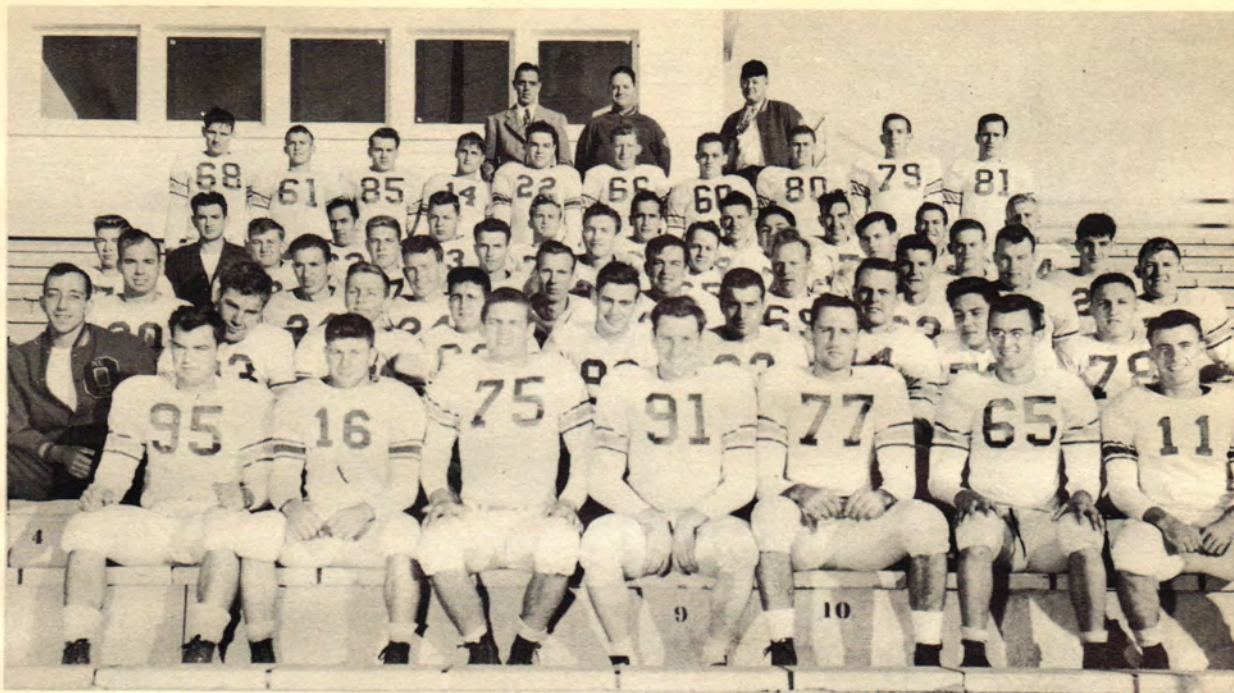
Homecoming found the mighty Cameron Aggies falling heavily before the Viking forces by a 37-14 count. A capacity crowd witnessed the Vikings as they rolled over the previously unbeaten Aggies.

On successive week-ends the Vikings fattened their conference standing at the expense of the Northern Mavericks (20-0), and Murray's Aggies at Tishomingo (32-0).

OMA found the going tough and the power a-plenty with the high-g geared Norse romping with a 43-0 victory.

Turkey Day found the feathers flying at Joplin as the Salt Bowl bound Vikings pasted a 44-6 shingle on the scrappy Jucos. Although the Jucos fought tirelessly throughout the first half, the mighty power of the Viking attack was in evidence as the game wore on.

Yes, they had a right to strut.



FRONT ROW—Joe Hankins, Gene Terry, Gene Cruzan, Ted Rupe, Bob Kirk, David Sippy, Bob Jones.  
 SECOND ROW—Bill Schulein, Bob Collins, Rob Bartlett, Frank Munoz, Ronald Dry, Bill Watkins, Curt McLaughlin, Christie Byrd, Bob Claibourne.  
 THIRD ROW—Jack Hopkins, Gene Holland, Leroy Ballard, Stanley Trask, Marion Morgan, Jack Colvard, Bill Shaddock, Jack Wallace, J. W. Brewington.  
 FOURTH ROW—Clyde Goins, Bob Paul, Fred Keyes, Raymond Larkin, Andy Musgrave, Brooks O'Kelly, Jeff Williams, Leo King, Sonny Moore, Johnny Sheppard, Pete Peterson.  
 FIFTH ROW—Bob Collins, Junior Stiewald, Bill Newman, Gene Keith, Kenneth Garrison, Bill Dodson, Bert Lewis, Dick Stratton.  
 BACK ROW—Max Buzzard, Jim Williams, J. E. Landon, Paul Williams, Bob Thompson, C. C. Rigney, line coach; Jess Fronterhouse, backfield coach; S. A. Robertson, head coach.



BILL WATKINS

All-Oklahoma Halfback  
 Two-year letterman on the single wing

BERT LEWIS

All-Oklahoma Fullback  
 Freshman—Played on single wing



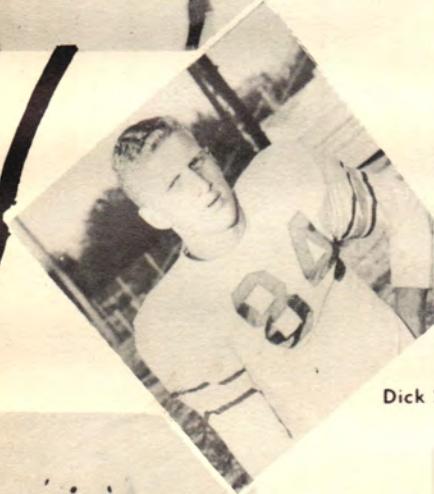
Jack Colvard  
T



Sonny Moore  
C



Ronald Dry  
T



Dick Stratton  
E



Christie Byrd  
Q B



Kenneth Garrison  
T



Bob Thompson  
F B  
Captain of Salt Bowl



J. W. Brewington  
G



Bob Collins  
B



Leo King  
Q B



Marion Morgan  
G



Johnny Sheppard  
B



Jack Wallace  
C



Jack "Pappy" Hopkins  
T



J. E. Landon  
B



Paul Williams  
E



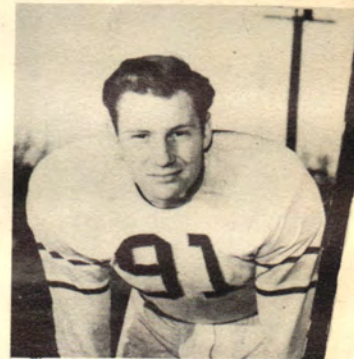
Bill Dodson  
C



Bob Claibourne  
G



Bob Collins  
T



Ted Rupe  
G

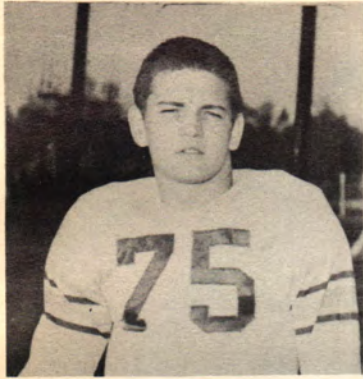


Frankie Munoz  
B

Curt McLaughlin  
B



Max Buzzard  
B



Gene Cruzan  
G



Bob Kirk  
E



Bill Shaddox  
G



Jim Williams  
G



C. C. Rigney  
Line Coach



Clyde Goins  
B



Stanley Trask  
C



Bill Newman  
E



Bob Paul  
B



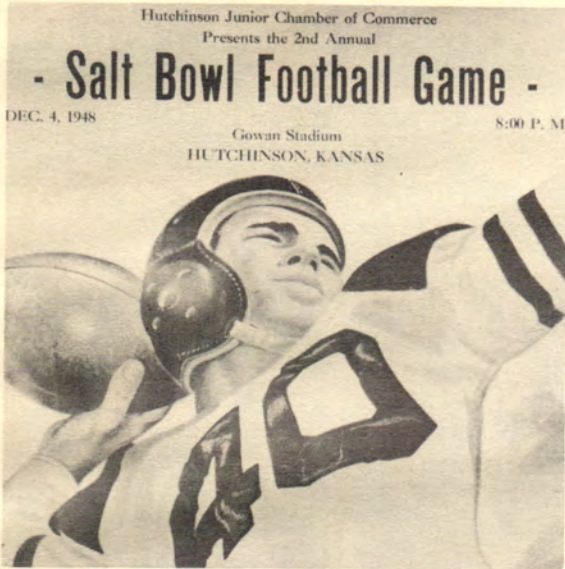
Jim Williams  
B



Gene Keith  
B

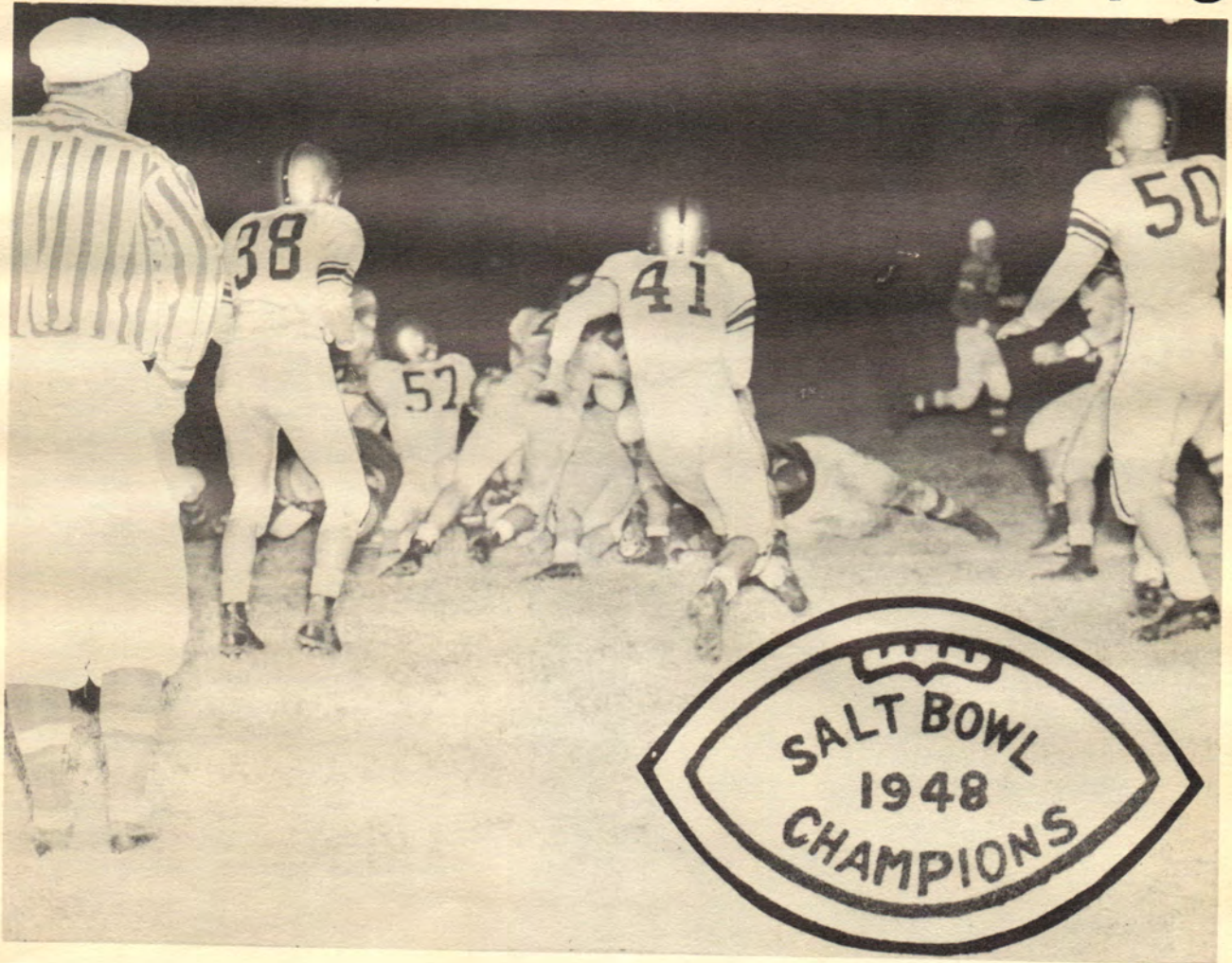
\* \* \* \* \*

# Norse Blitz Trojans



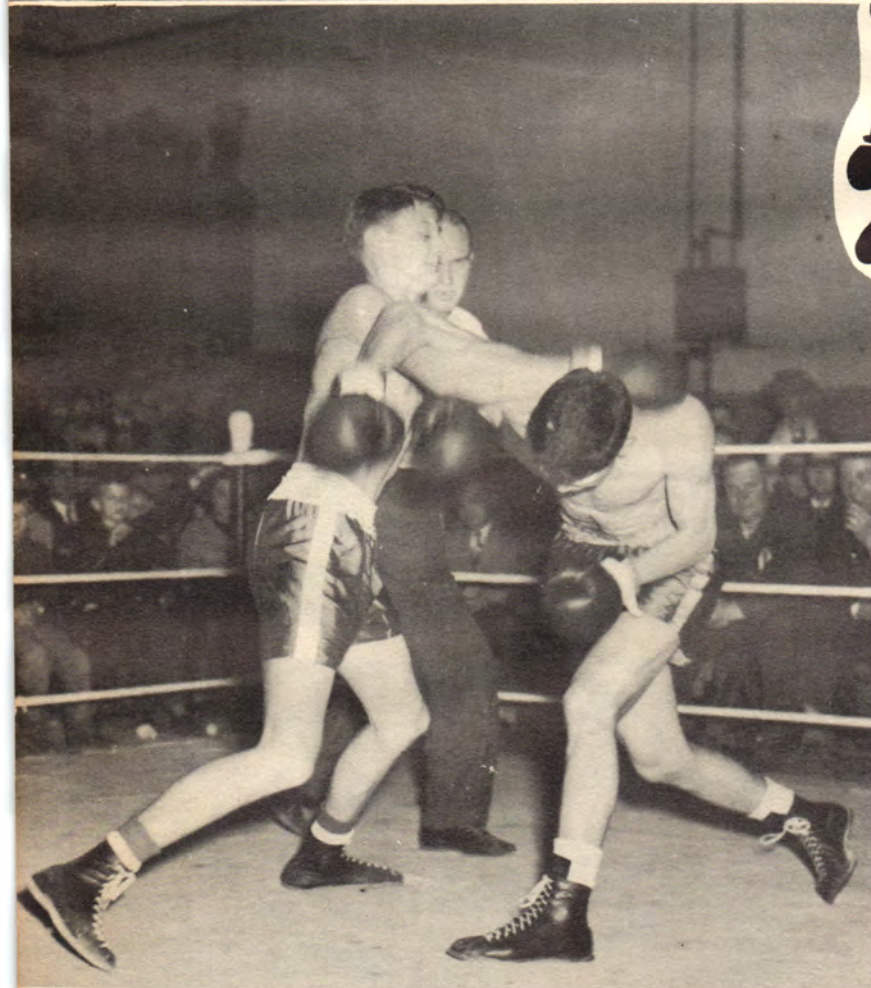
\* \* \* \* \*

## in Salt Bowl 34-0





# BOXING



The boxing team of the 1948-49 season at North-eastern Oklahoma A. and M. college was one of the finest in the history of the school. Under the guidance of Homa Thomas, coach, and Sammy Grounds, trainer, the Norse pugilists slapped three teams into submission early in the season.

Members of the teams are pictured in the upper left hand corner: front row—Homa Thomas, coach; Dale Bradford, Fred McDunner, Bob Van Liew, Pepper Martin, George Cowherd, Sam Grounds, trainer; back row—Joe Kouri, Tehi Secondine, Bob Collins, Gene Cruzan, J. W. Brewington, Keith Bond.

To the left, you see Tehi Secondine, lightweight ace, jarring Bill Whipkey, Picher, with a lightning right cross in the Junior Chamber of Commerce slugfest held in College gymnasium.

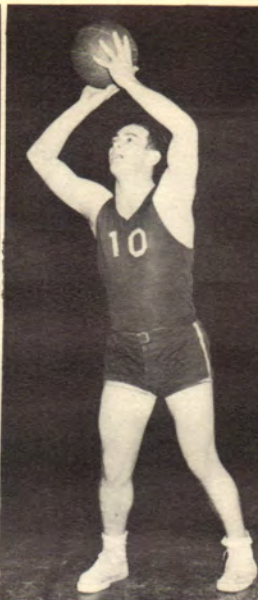
Above is Bob Collins, rugged heavyweight standout, who copped the Oklahoma heavyweight novice crown. Collins was undefeated in canvas warfare.



Bill Cook  
C



Wayne Truxal  
G



Ronald Dry  
C



Dale Smith  
F



Joe Munoz  
G

# BASKETBALL



|          |       |  |
|----------|-------|--|
| DECEMBER | 15    | Oklahoma Military Academy ..Claremore      |
| DECEMBER | 16    | Oklahoma A. & M. College ...Okmulgee       |
| JANUARY  | 6     | Northern .....Tonkawa                      |
| JANUARY  | 10    | Tulsa University .....Tulsa                |
| JANUARY  | 11    | Connors .....Warner                        |
| JANUARY  | 13-14 | Eastern .....Here                          |
| JANUARY  | 24    | Coffeyville Junior College ....Coffeyville |
| JANUARY  | 28    | Bacone .....Here                           |
| FEBRUARY | 1     | Oklahoma Military Academy .....Here        |
| FEBRUARY | 4     | Joplin Junior College .....Here            |
| FEBRUARY | 8     | Connors .....Here                          |
| FEBRUARY | 11    | Bacone .....Muskogee                       |
| FEBRUARY | 15    | Joplin Junior College .....Joplin          |
| FEBRUARY | 24    | Murray .....Tishomingo                     |
| FEBRUARY | 25    | Tulsa University .....Tulsa                |
| MARCH    | 3 - 4 | Cameron .....Lawton                        |



S. Albert Robertson



Argyle Croan  
F



Stanley Trask  
F



Frankie Munoz  
G



Bob Renfro  
F

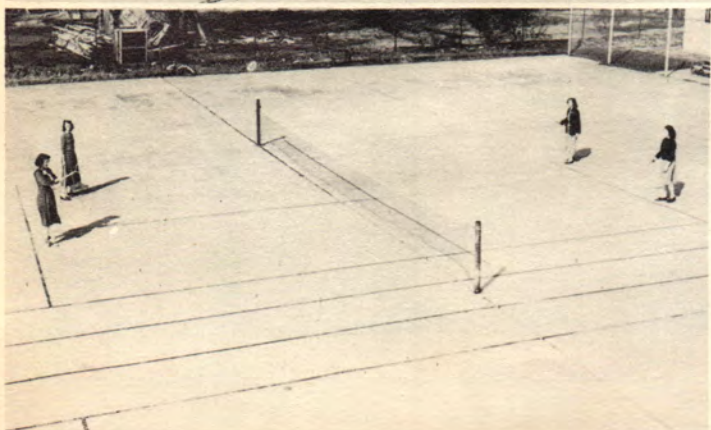


## GIRLS' SPORTS

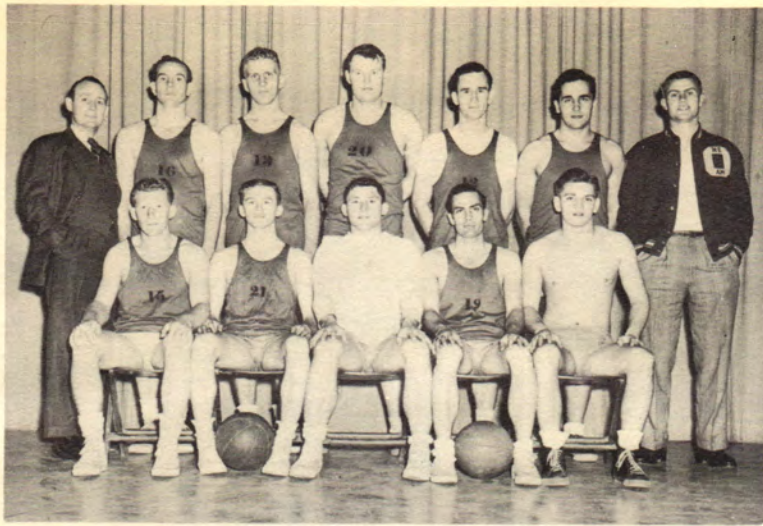
The WOMEN'S HEALTH and PHYSICAL EDUCATION DEPARTMENT, under the direction of Mrs. S. A. Robertson, strives for a well-rounded athletic program for the women students of Northeastern Oklahoma A. & M. College.

The class meets three times a week, giving the students an opportunity to participate in various sports. Stress is placed on activities that will be of greater value to the girls after college days.

Sports in which they have been engaged are volleyball, tennis, basketball, bowling, table-tennis, badminton, and folk dancing.



# INTRA



PRESS CLUB, winners of the Intramural basketball tournament. The team won six games and lost none under the guidance of Ray Vanderburg, extreme left, and J. E. Landon. From left to right, front row, are Max Buz-zard, Johnny Sheppard, J. W. Brewington, Bob Collins and Gene Cruzan. Back row: Vanderburg, Paul Williams, Dick Stratton, Jack Wallace, Bob Thompson, Gene Keith and Landon.

# MURAL



WHIZ KIDS  
PHI SIGS



ESPANOLES  
BUSINESS CLUB



ENGINEERS  
AGGIES

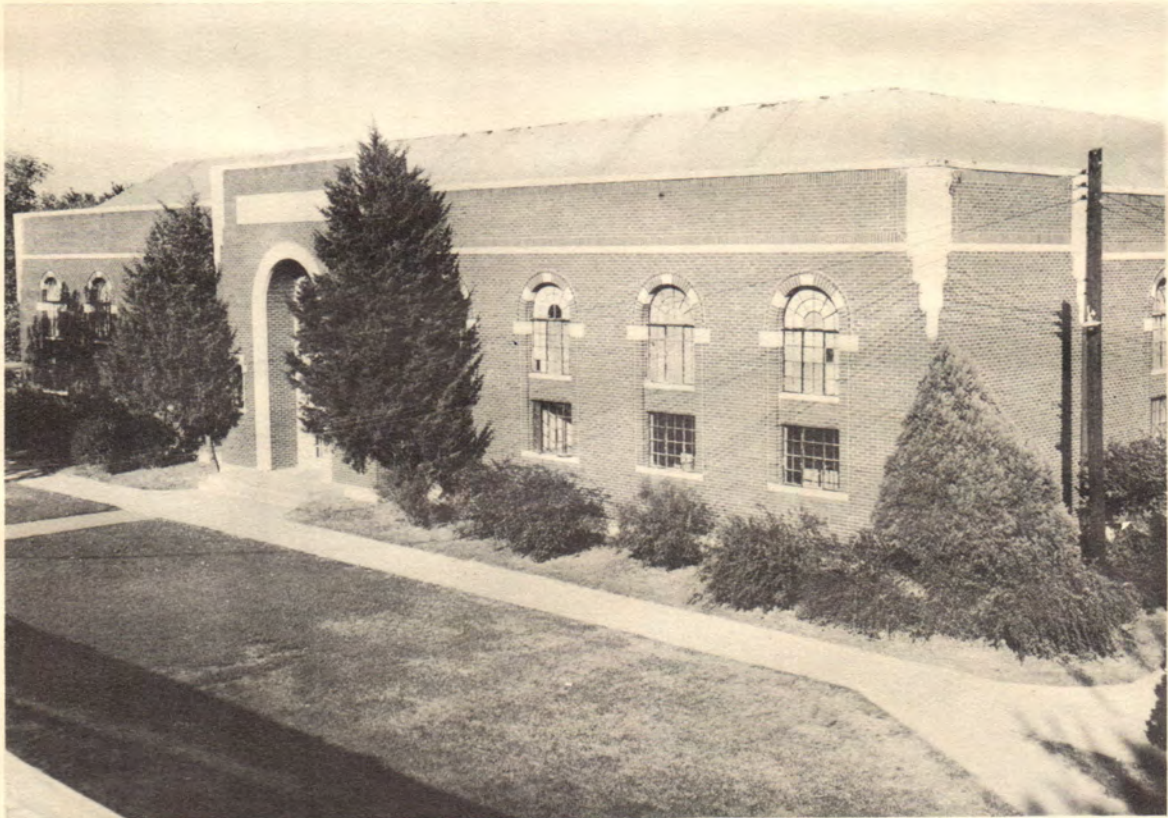


# INTRAMURAL BOWLING



The College Bowling League was established February 1, 1949, with Bill Butefish as president, Sam Grounds as vice-president, and Calvin Rohmiller as secretary-treasurer. The Business Society, the Aggies, the Engineers, and an independent team, the Rockets, organized teams to bowl for a period of twelve weeks.

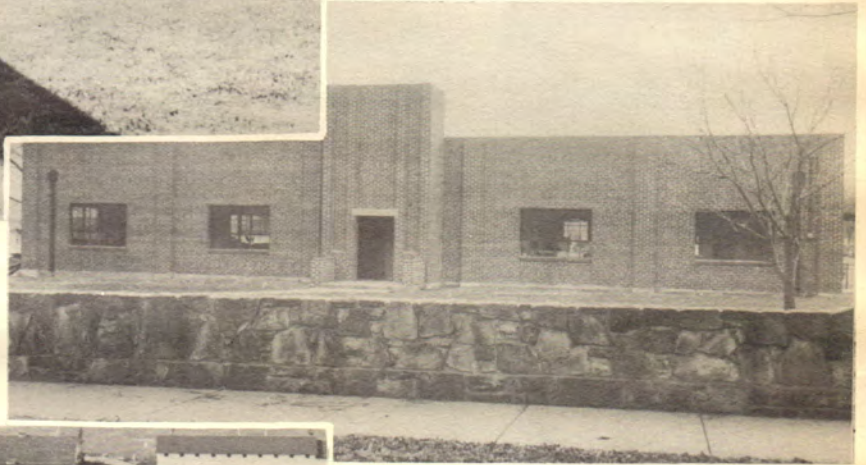
Pictured above are some members of the various teams. Seated are Calvin E. Rohmiller, Marshall Smith, Charles Sippy, Bob Reed, Pepper Martin, Gerald Risner, and Gene Holland. Standing are C. B. Roberts, Bill Gruenberg, Joe Kouri, Bill Butefish, J. C. Smith, Sam Grounds, Pete Peterson, and Wayne Weston.



GYMNASIUM-AUDITORIUM 1930



VETERANS' VILLAGE 1947



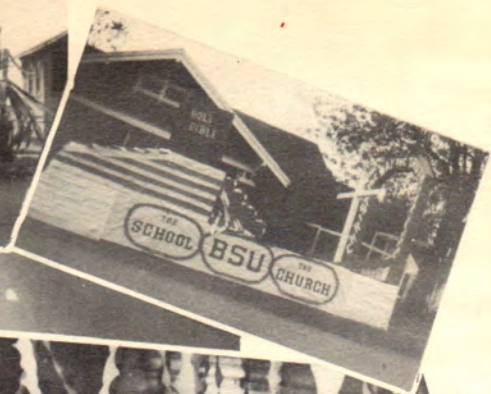
WOOD WORKING SHOP 1941



NORTH CAMPUS 1947

SUNNY SLOPE FARM 1946





SENIOR DAY

HOMECOMING



Senior Day lunch—Phi Theta Kappa Homecoming float—"O" Club Homecoming float—B. S. U. Homecoming float—Senior Day Assembly—Geneva Lakey, Homecoming Queen—Homecoming Dance—Seniors with guides—Pep Club Homecoming float—Gamma Homecoming float—Senior Day Assembly.







Broke but happy—Waiting for them to hatch, fellows?—Don and Don—A field of corn—Patsy's getting catty—Campusology majors, M. J. and Bob—That Vantrease kid—Girls' reformatory . . . er dormitory—Cheer leaders work out—The glow girls—Happy?—Frances and Billy Sue—High on a windy bench, Boo and Herb—Oh, if I had the wings of an angel, Bill and Jackie—Smile girls, Propp and Swearengin—House Mother, Mrs. Richards.



This Buick Convertible, designed to fit every college student's fancy, may be found at . . . . .  
**NORTON-LITTLETON'S.**

The smiling faces of Pauline, Nance and Jean reflect the highly satisfactory service at **MIAMI LAUNDRY AND DRY CLEANING.**



Sipping cokes at **SPENCER'S DRUG** is fun. You can also buy your smokes and cosmetics there.

Married? Going to be? Thinking about it? The **HOME APPLIANCE COMPANY** is the place to buy those important electrical appliances.





Having shoe troubles, girls? Or men? The HUB can supply anything from dancing slippers to cowboy boots.

---



Mary and Stanley know just where to find the best things to eat . . . at COX'S COLLEGE GROCERY, of course.

---



Who wouldn't delight in an office like this or such a car as a Lincoln-Mercury. See it at BURTRAM'S MOTOR COMPANY.

---



Oh, Girls! Wouldn't you like to start keeping house with such glass and silver that Paula found at DAWSON'S JEWELRY.

---



Guys and Gals, you will find the latest of everything at the new store of MILLNER BERKEY, INC.

---

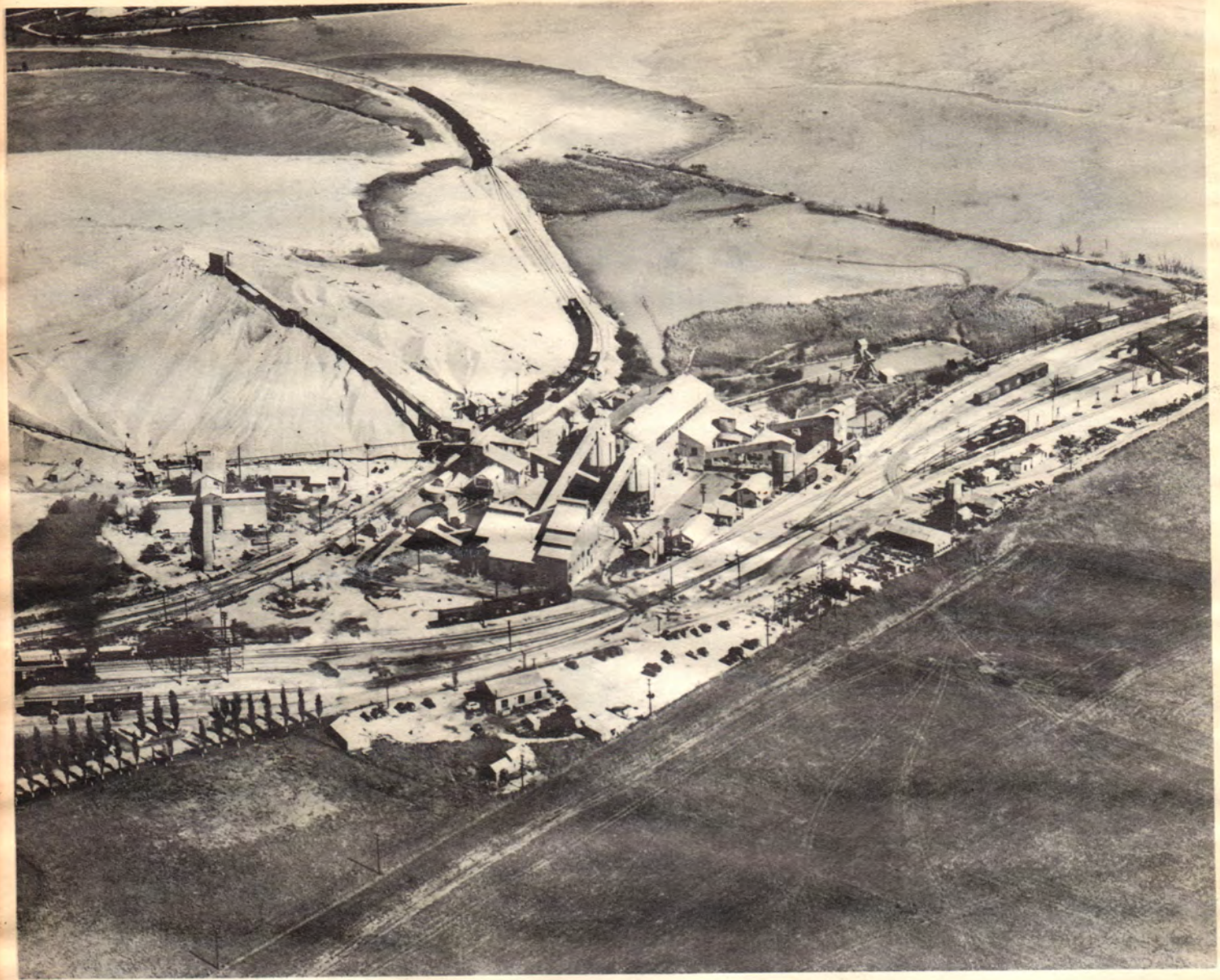
Drive in at DEE'S DRIVE-IN. Good pies, good cakes, and a friendly atmosphere are featured.



Need Kodak supplies or fountain pens? Jackie knows just the thing for you at the REXALL DRUG.

Bob knows where to go to find the latest style in shirts—B & K CLOTHIERS.





Every engineering student looks forward to a trip through this—**EAGLE PICHER'S** Central Mill, the pride of Northeastern Oklahoma.

The sadness caused by the loss of a loved one in a family has been lightened many times by the thoughtful service of the **COOPER FUNERAL HOME**.

The **VIKING STAFF** sincerely thanks these advertisers who have encouraged our publishing this book.





Have these N. E. O. A. & M. students found the answer to their dreams? SCOGGINS can help them.

## OTHER COLLEGE FRIENDS

MIAMI RECORD SHOP  
 BEN STANLEY'S CAFE  
 MAGNOLIA PRODUCTS  
 SKELLY SERVICE STATION  
 BENGE CLEANERS

FARRIER'S I. G. A. MARKET  
 STAN'S BARBER SHOP  
 MIAMI GREENHOUSE  
 B & B SHOE STORE  
 WILLIAMS JEWELERS

What's Cooking!—It's Spring!—Pledges—Santa's Here—Christmas '48—The new Queen!





AGGIES—1949



MEN—1949



PROGRESS



FROSH—1947



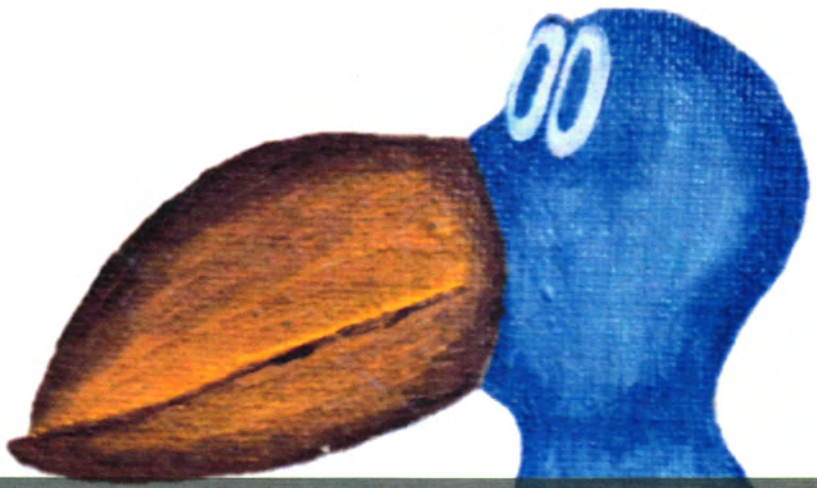
GRADUATE—1949



19??







# NEO A&M College Archive Collection



## The Viking – the NEO A&M College Yearbook

Digital copies of The Viking, Northeastern Oklahoma A&M College's annual yearbook, are available in .pdf format on the NEO website for non-commercial purposes only. Scans were created using the best available editions; where stains, color-fading, and contributed marks (usually signatures) were visible on the original they also appear in the digital copy. The edge of some pages in oversized editions may be partially lost due to width limitations on the scanning bed. NEO yearbook editions that do not appear on the website are not part of the collection at present. If you would like to donate a yearbook, please contact the NEO Library.