

Viking 1948

LIBRARY
NORTHEASTERN A. & M. COLLEGE
MIAMI, OKLA.

Due

Date ~~XXXXXX~~

| | | |
|--|--|--|
| | | |
| | | |
| | | |
| | | |
| | | |
| | | |
| | | |
| | | |
| | | |
| | | |
| | | |
| | | |
| | | |
| | | |
| | | |
| | | |
| | | |
| | | |
| | | |
| | | |
| | | |
| | | |

Library Bureau Cat. No. 1138

378
N81v
1948
Cop. 2

8232



ADMINISTRATION BUILDING

*And solid learning never falls
Without the verge of college walls.*
—CHARLES CHURCHILL.

LIBRARY
NORTHEASTERN A. & M. COLLEGE
MIAMI, OKLA.

The 1948 Viking
Northeastern A. & M. College
Miami, Oklahoma

Dedication

To the students of Northeastern
Oklahoma Agricultural and
Mechanical College, past,
present and future, we dedicate
this volume of the Viking.

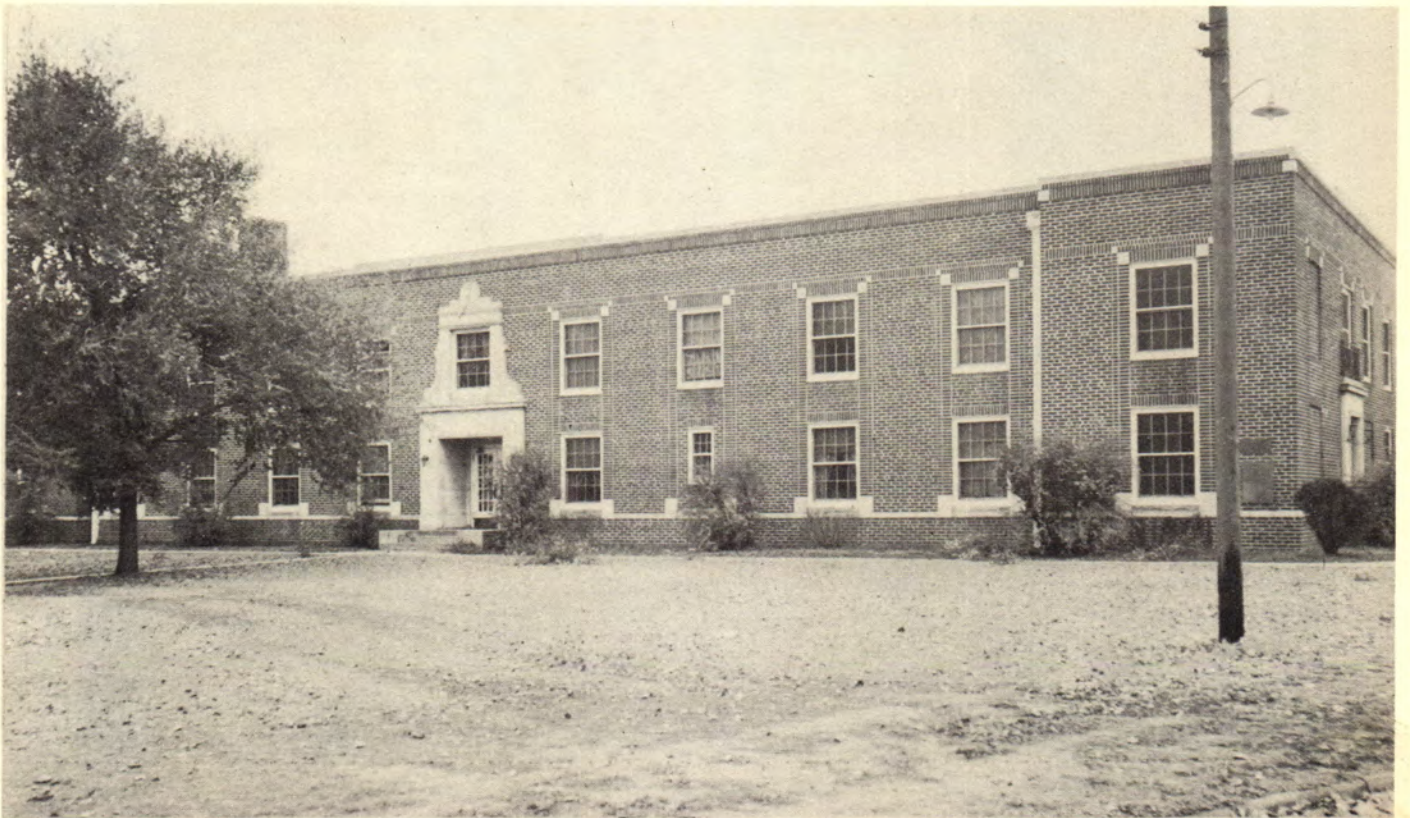
May their ideals prompt and
foster a spirit which will build
a yet greater institution than
our Alma Mater.

LIBRARY
NORTHEASTERN A. & M. COLLEGE
MIAMI, OKLA.



KAH-NE-YOU-AH HALL

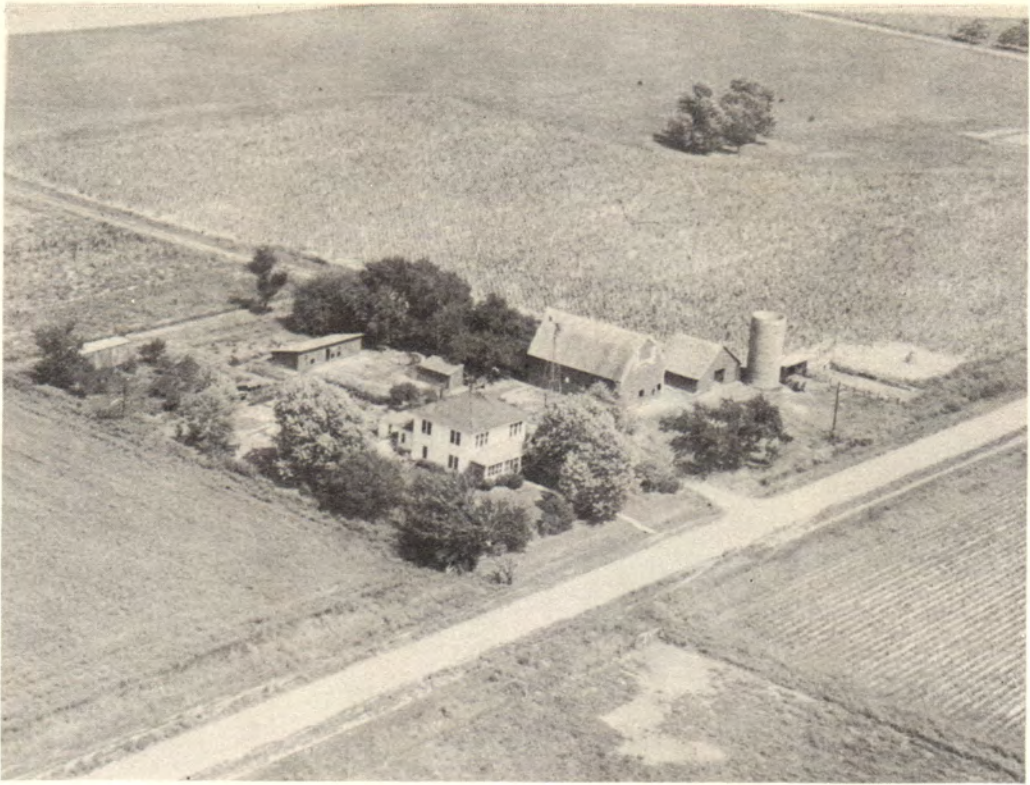
*Where we love is home,
Home that our feet may leave,
But not our hearts.*
—HOLMES.



COMMONS HALL

*To seek their fortune further than at home,
Where small experience grows.*
—SHAKESPEARE.

May 1948 College FS



COLLEGE FARM

*Here Cere's gifts in waving prospect stand,
And nodding tempt the joyful reaper's hand.*
—POPE.

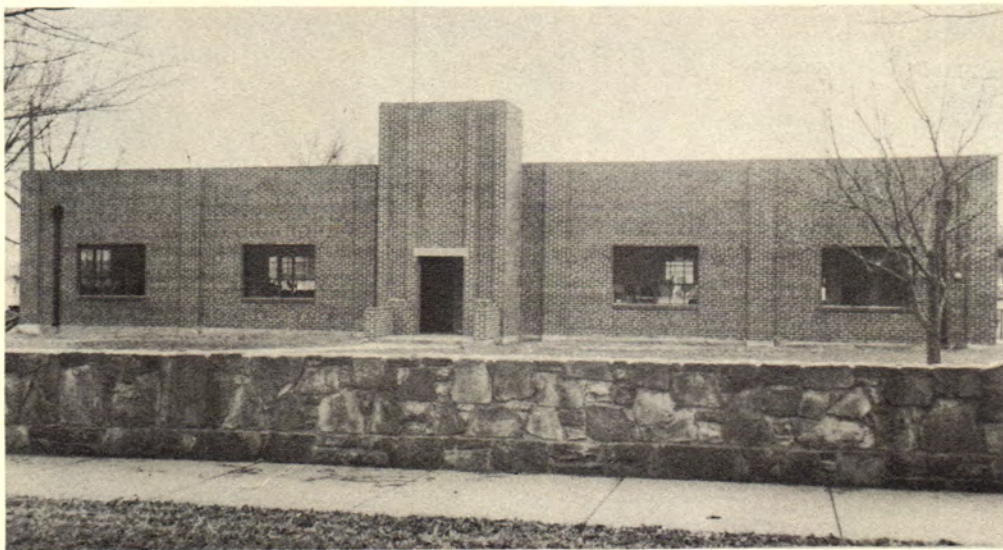


SPARTAN

*Let me live in the house by the side of the road
And be a friend to man.*
—FOSS.

GYMNASIUM
AND
AUDITORIUM

*"Their pleasures here are
past, so is their pain."*
CYMBELINE.

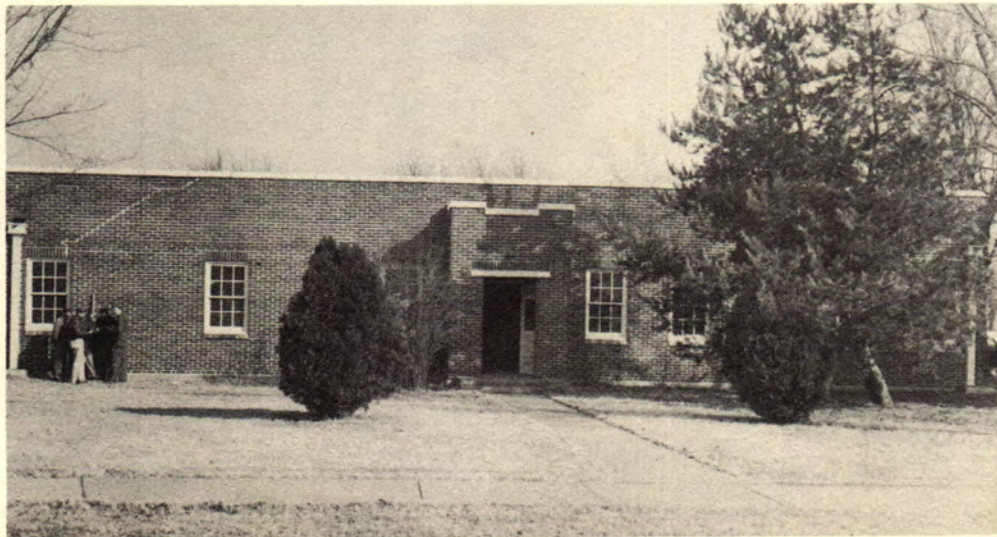


INDUSTRIAL
ARTS
BUILDING

*"Great is thy skill, O
builder; thy fame shall
endure for aye."*
ANON.

METAL SHOP

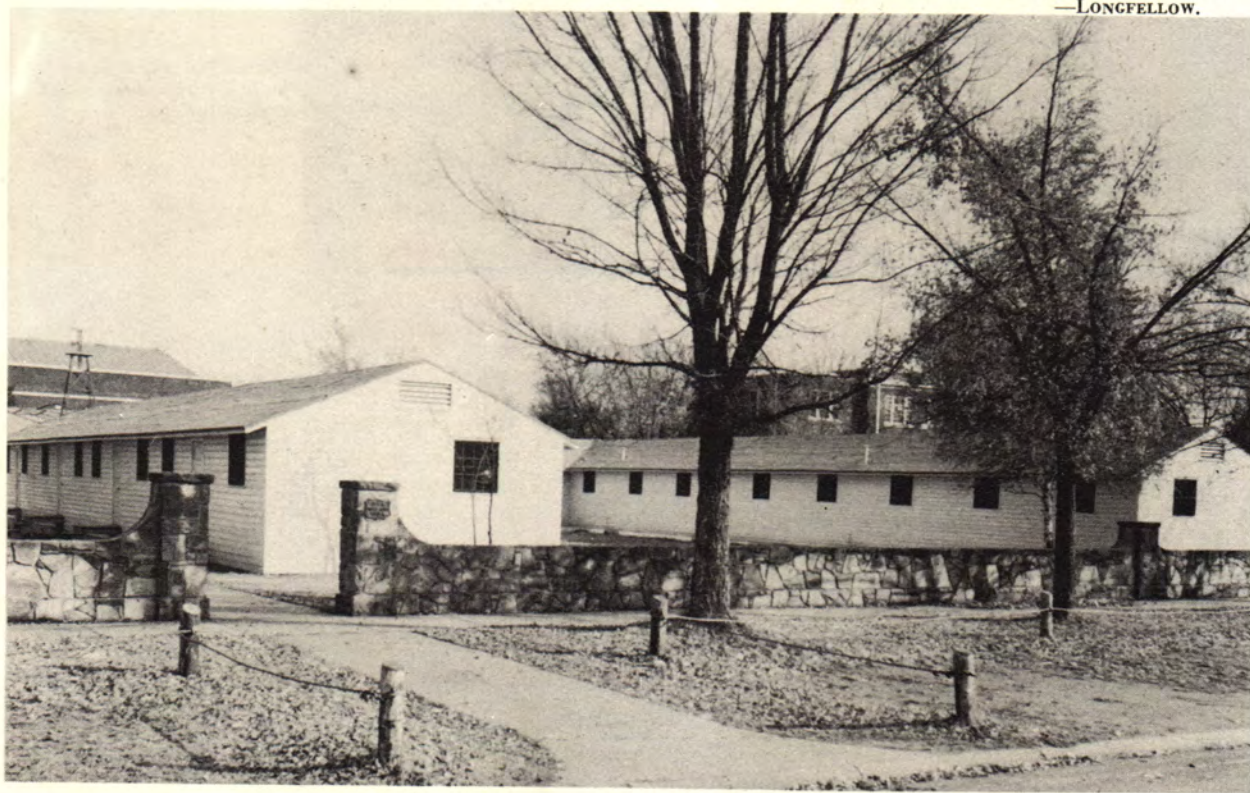
*"Thus at the flaming forge of
life our fortunes must be
wrought."*
LONGFELLOW.





REFRIGERATION SHOP

*"Oh! what a wondrous thing it is
To note how many wheels of toil,
One thought, one work, can set in motion."
—LONGFELLOW.*



CLASSROOM BUILDING

*"'Tis education forms the common mind."
POPE.*



PRESIDENT BRUCE G. CARTER

THE COLLEGE at Miami is being built as a service institution. It is our desire to serve the students, young and old, living in this section of our great nation. We are developing an expanding liberal arts program, a vocational education program, and an agricultural program planned to fit the needs of those living in this entire area.

We want to be small enough to give personal and individual attention to each and every student, and we want to be large enough to offer a diversified program that will be varied enough to meet the needs of those interested in our area. It is our desire that our students may develop and learn how to make a life as well as a living while attending Northeastern at Miami.

Sincerely,

Bruce G. Carter

President.



GOVERNOR ROY J. TURNER

Board Of Regents



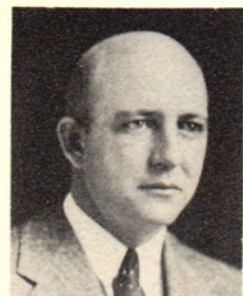
P. E. HARRILL
Oklahoma City, Oklahoma



R. T. STUART
Oklahoma City, Oklahoma



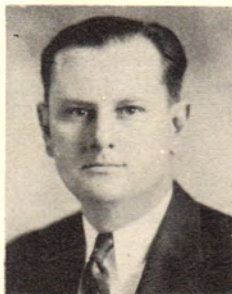
W. ELMER HARBER
Shawnee, Oklahoma



EDWARD DAVIS
Erick, Oklahoma



JOHN CARPENTER
Red Rock, Oklahoma



JOE C. SCOTT
Oklahoma City, Oklahoma



FRED DRUMMOND
Hominy, Oklahoma



O. L. LACKY
Okmulgee, Oklahoma



EARL RUSSELL
Duncan, Oklahoma



MELVIN A. SHIPLEY
Dean and Chief Clerk
B.S., M.S., Kansas State Teachers College



CARL C. RIGNEY
Dean of Men, Biological Science
B.S., M.S., Oklahoma A. & M. College



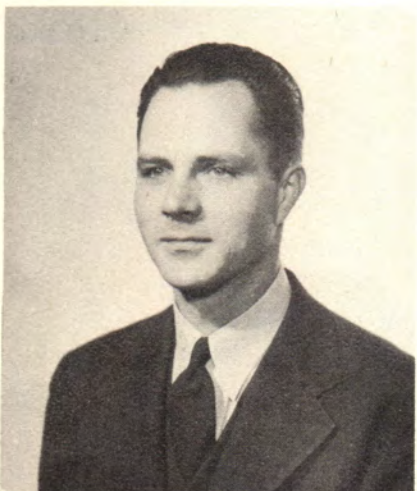
FAYE V. VANN
Dean of Women, Languages
B.A., M.A., University of Oklahoma

MERRILL C. CHANEY
Instructor of Industrial Education
B.S., M.S., Kansas State Teachers College



GLADYS Y. COPEN
Instructor of Commerce
B.S., M.S., Kansas State Teachers College
Graduate Student, Oklahoma A. & M. College

FRANK W. CUNNINGHAM
Instructor of Physical Science
A.B., Kansas Wesleyan University
M.S., Kansas State Teachers College
Graduate student, University of Arkansas, Kansas State Teachers College, University of Denver



JOHN W. ELLIOTT
Instructor of Instrumental Music
B.A., Oklahoma A. & M. College

JESS FRONTERHOUSE
Assistant Athletic Director and Director of Spartan Housing
B.A., M.A., Oklahoma City University



WINIFRED HEAVNER
Instructor of Commerce
B.A., Southeastern State College

LIBRARY
NORTHEASTERN A. & M. COLLEGE
MIAMI, OKLA.



JOE W. ABLES
Instructor of Industrial Education
B.S., Southeastern State College
M.S., Oklahoma A. & M. College

RUTH ARRINGTON
Instructor of Speech
B.A., Oklahoma College for Women
Graduate Student, University of Michigan



ROBERT G. BATH
Instructor of Radio and Electricity
B.A., Columbia University
Graduate Student, Oklahoma A. & M. College

RUTH BREANE
Instructor of Government and English
B.A., University of Oklahoma



ETTA R. BRUTON
Instructor of English
B.A., Scarritt-Morrisville College
M.A., University of Wyoming
Graduate Student, University of Chicago
University of Montana
Breadloaf School of English,
Middlebury College
University of Colorado
Washington University

RUBY T. CAMPBELL
Instructor of Mathematics
A.B., Northeastern State College
M.A., Oklahoma A. & M. College
Graduate Student, University of Colorado
University of California
University of Denver
University of Arkansas



VIRGINIA LINDSEY
Instructor of History and Government
B.A., University of Oklahoma
M.A., University of Oklahoma
Graduate Student, George Washington
University
University of Southern California
Oklahoma A. & M. College
University of Virginia

EVERT LITTLE
Guidance Director
B.A., Panhandle A. & M.
M.Ed., University of Oklahoma



OREN NEED
Instructor of Mathematics
B.S., Kansas State Teachers College
M.S., Kansas State Teachers College

LULA PRATT
Librarian
B.A., Oklahoma College for Women
B.A., University of Oklahoma
M.A., University of Oklahoma



KENNETH RICHARDS
Instructor of Vocal Music
B.F.A., University of Oklahoma
Graduate Student, Northwestern
University

S. ALBERT ROBERTSON
Director of Athletics
A.B., Drake University
M.S., Oklahoma A. & M. College
Graduate Student, Colorado State
College
University of Oklahoma

MABEL JENNINGS SPEAKER
Instructor of Home Economics
B.S., Northeastern State College
M.S., Oklahoma A. & M. College
Graduate Student, Oklahoma A. & M. College



MARY JANE SPEER
Registrar and Secretary to the President
A.A., Northeastern Oklahoma Junior College

HARRY SYNAR
Instructor of Agriculture
B.S., Oklahoma A. & M. College



JOHN THIESING
Instructor of Mathematics and Physics
B.S., Kansas State Teachers College
Graduate Student, Kansas State Teachers College

JOE TIMKEN
Adult Education
B.S., Western State College
M.S., Oklahoma A. & M. College



RAY VANDERBURG
Instructor of Journalism and English
B.A., Southeastern State College
M.Ed., Oklahoma University



EMMA-LOU WIEHE
Instructor of Health and Physical Education
 A.A., Bartlesville Junior College
 B.A., Oklahoma A. & M. College
 Graduate Student, Texas State College for Women



THEODORE WIEHE
Instructor of Industrial Education
 B.S., M.S., Oklahoma A. & M. College



MARVIN WOOD
Agronomy Instructor
 B.S., Oklahoma A. & M. College

O
F
F
I
C
E



JULIA ADY



WYNONA NIEDERMAYER



VELA TRASK

P
E
R
S
O
N
N
E
L

A
D
M
I
N
I
S
T
R
A
T
I
O
N

V
E
T
E
R
A
N
S



RUSSELL CROOCH



MAE BEARSKIN



GILBERT JENKINS



DORA B. RICHARDS
Counselor for Women



DONALD C. DYER
Counselor for Men



MARIAN DYER
Dietitian

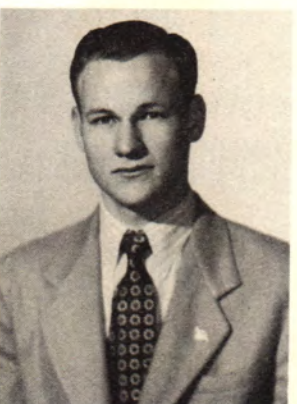
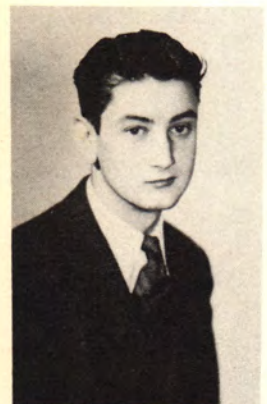


RUTH BURTON
Dietitian

Sophomores

President-----MOODY K. PALMER
Vice President-----BILL MELTON
Secretary-----JAMES K. WOFFORD
Treasurer-----HORACE QUATTLEBAUM
Representatives-----NORMAN JAMES
 JACK LILBURN





ALEXANDER, Gail
Miami, Oklahoma
Arts and Science
Eta Upsilon Gamma, President

BARLOW, Genevieve Pat
Miami, Oklahoma
Physical Education
Sigma Iota Chi
Versatile Girl

BEARSKIN, Alvin W.
Miami, Oklahoma
Architectural Engineering
Phi Theta Kappa
Student Council

BROWN, Harley L., Jr.
Tacoma, Washington
Business Administration

BURR, David A.
Riverton, Kansas
Journalism
Norsewind Editor
Phi Theta Kappa
Phi Sigma Nu
Versatile Boy

BAKER, Betty Sue
Benton, Arkansas
Business Administration
Chorus
Eta Upsilon Gamma

BARTLEY, James H.
Fairland, Oklahoma
Education

BLACKBURN, J. T., Jr.
Welch, Oklahoma
Engineering
Eta Iota Tau, Vice President
Vice President Freshman Class
Engineers' Club, President

BRYANT, Bert L.
Disney, Oklahoma
Physical Education

CAMPBELL, Maxine
Commerce, Oklahoma
Foreign Language

BALAY, Hubert Lee
Seneca, Missouri
Chemical Engineering
Engineers' Club

BEARD, Lloyd Paul
Zena, Oklahoma
Education

BRADFORD, Betty Jane
Pryor, Oklahoma
Education
International Relations Club
Chorus

BUERGEY, William L.
Miami, Oklahoma
Personnel Management
Phi Sigma Nu, Secretary
Press Club
Norsewind Circulation Manager

CAMPBELL, Mildred
Commerce, Oklahoma
Arts and Science
B. S. U.

CHEEK, Rosemary
Afton, Oklahoma
Home Economics
Aggiette, President

COATS, Jack L.
Miami, Oklahoma
Pre-Med
Band

DAREING, Pauline
Miami, Oklahoma
Commerce
Aggiettes

DENTON, James A.
Tracadie New Brunswick, Canada
Pre-Med
Eta Iota Tau, Vice-President
Student Council

EDWARDS, Beulah
Miami, Oklahoma
Physical Education
Co-Editor Norsewind
Press Club Queen
Viking Queen

CLABAUGH, Jack G.
Picher, Oklahoma
Engineering
Engineers Club

CONNELY, Ralph, Jr.
Miami, Oklahoma
Business Administration
Phi Sigma Nu

DUNCAN, J. K.
Nowata, Oklahoma
Psychology
Engineers' Club
Band

DOTY, Betty Sue
Miami, Oklahoma
Journalism
Press Club
Speech Club
Norsewind Staff

ELLIOTT, LeRoy T.
Hockerville, Oklahoma
Refrigeration

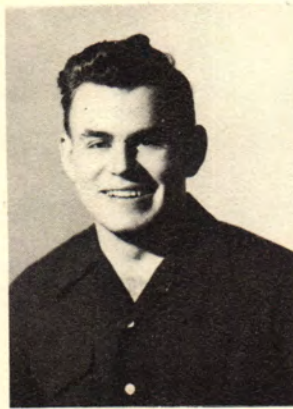
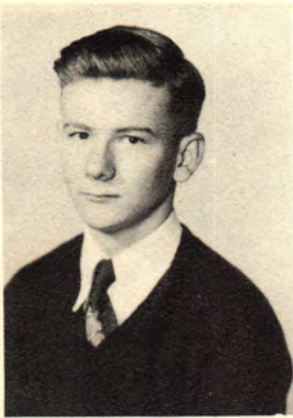
CLAGGETT, Fred Junior
Vinita, Oklahoma
Accounting
B. S. U.

CORLEY, Stanley E.
Claremore, Oklahoma
Business Administration

DENTON, Jack
Claremore, Oklahoma
Business Administration
O Club

DOTY, Kenneth E.
Miami, Oklahoma
Accounting

EWERS, Emma Lois
Vinita, Oklahoma
Arts and Science
Sigma Iota Chi
Viking Staff
"Our Town"
Aggiette





FARLEY, Charles Richard
Miami, Oklahoma
Music
Quartet

FARLEY, Paul D.
Miami, Oklahoma
Accounting
Quartet
B. S. U., President

FERGUS, Charles
Miami, Oklahoma
Business
Student Council, President
Phi Sigma Nu, President
Student Union, Chairman
Associate Editor Norsewind



FISHER, Edgar
Miami, Oklahoma
Education

FISHER, Kenneth R.
Miami, Oklahoma
Engineering

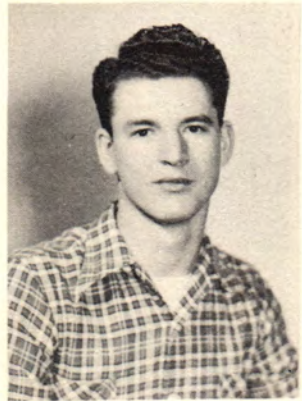
FOSTER, Ruby Lea
Vinita, Oklahoma
Physical Education
Engineers' Club
International Relations Club
Engineers' Queen



FOUST, George A.
Miami, Oklahoma
Education

FRISBIE, Jack Gene
Miami, Oklahoma
Music
Phi Theta Kappa
Band
Chorus

FUNDERBURG, Henry F.
Vinita, Oklahoma
Civil Engineering
Engineers' Club



FUNKHOUSER, Edward J.
Afton, Oklahoma
Business Administration
Phi Theta Kappa
Press Club

GARRISON, Bee Jay
Welch, Oklahoma
Accounting

GARRISON, Kenneth
Welch, Oklahoma
Audio-Visual Science
O Club



GIBBS, Newman Willie
Oologah, Oklahoma
Business Administration

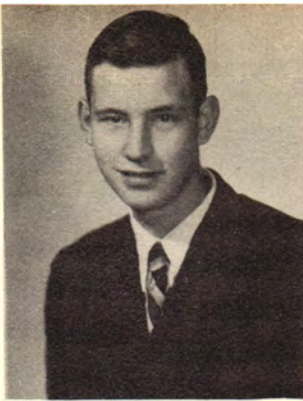
GIBSON, Mildred
Columbus, Kansas
Physical Education
Student Council, Secretary
Viking, Co-Editor
Phi Theta Kappa
Versatile Girl

GOECKE, Alvin A.
Adair, Oklahoma
Accounting

GOYER, Ewell Dean
Salina, Oklahoma
Business Administration

GRAHAM, William F.
Miami, Oklahoma
Accounting
Phi Theta Kappa

GRAY, Everette W.
Grove, Oklahoma
Refrigeration
Eta Iota Tau



GRIFFIN, Curtis
W'yanlotte, Oklahoma
Agriculture
Aggies
O Club

GRIFFIN, Lela Mae
W'yanlotte, Oklahoma
Mathematics
Engineers' Club, Secretary
Viking Staff

GROENEMAN, Austin
Miami, Oklahoma
Petroleum Engineering
Phi Sigma Nu
Phi Theta Kappa



GWARTNEY, Archie, Jr.
Boatman, Oklahoma
Business Administration

HENDERSON, William H.
Midland, Arkansas
Refrigeration
Quartet

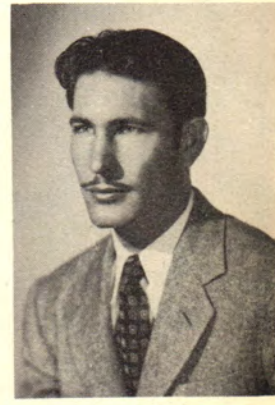
HILL, William R.
Miami, Oklahoma
Engineering
Engineers' Club



HODGE, Herbert E.
Fairland, Oklahoma
Journalism

HOUSMAN, Gerald L.
W'yanlotte, Oklahoma
Civil Engineering
Eta Iota Tau
Engineers' Club

HUBBARD, Tommy Jack
Westville, Oklahoma
Agriculture
Aggies
Eta Iota Tau



HUNNICUTT, Elbie Lee, Jr.
Miami, Oklahoma
Business
Phi Sigma Nu

JAMES, Norman S.
Fairland, Oklahoma
Engineering
Engineers' Club
Phi Theta Kappa
Dean's Honor Roll

JANTZ, Herman
Inola, Oklahoma
Refrigeration
B. S. U.
Chorus



JOHNSON, William C.
Wyanotte, Oklahoma
Engineering

KIESEL, Joe
Pryor, Oklahoma
Refrigeration

LILBURN, Jack
Nowata, Oklahoma
Chemical Engineering
Phi Theta Kappa, President
Band
Student Council
Engineers' Club
Collegians

McAFFREY, Roscoe Lee
Welch, Oklahoma
Aggies

METZ, Paul A.
Okeene, Oklahoma
Business Administration

JOHNSTON, Louis Elmo
Broken Arrow, Oklahoma
Refrigeration
Air Conditioning

LEGG, James
Centralia, Oklahoma
Agriculture
Aggies

LYNCH, Leatha
Miami, Oklahoma
Home Economics
Aggiette Club

MATTOON, Marian
Wadsworth, Ohio
Arts and Science
Press Club
Aggiette Club
Viking Staff

MINSON, Rose Mary
Strang, Oklahoma
Commerce
Dean's Honor Roll
International Relations Club
Student Council
Aggiette
Our Town
Viking Staff

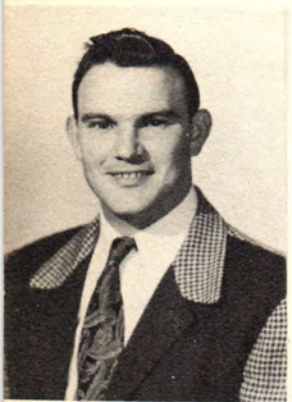
JONES, Lee D.
Picher, Oklahoma
Industrial Engineer
Engineer's Club

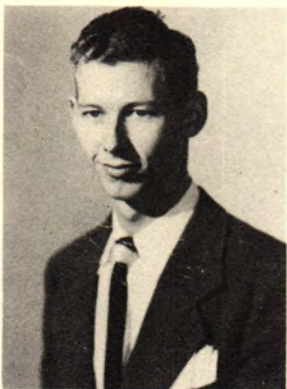
LEWIS, Orville C.
Vinita, Oklahoma
Physical Education
Eta Iota Tau
O Club

LYNCH, Virginia Devonda
Miami, Oklahoma
Home Economics
Aggiette Club

MELTON, Marion L.
Oklahoma City, Oklahoma
Engineering
Engineers' Club, President

MITCHELL, Walter E.
Seneca, Missouri
Business
Eta Iota Tau
Band





MORRIS, Billy
Seneca, Missouri
Engineering
Engineers' Club

OAKLEY, F. Joyce
Vinita, Oklahoma
Mathematics

PARSONS, James W.
Stilwell, Oklahoma
Agriculture
Aggie President

PENROD, Karri Donald
Picher, Oklahoma
Mechanical Engineering
Engineers' Club
Eta Iota Tau
O Club
Freshman President
Band

QUATTLEBAUM, Horace
Colony, Oklahoma
Petroleum Engineering
Engineers' Club Treasurer
Sophomore Treasurer

MURPHY, Patricia
Miami, Oklahoma
Home Economics
Aggiettes
B. S. U.
Student Council
Outstanding Student

OGDEN, Charles B., Jr.
Miami, Oklahoma
Business Administration
Phi Sigma Nu President
Sophomore Cheer Leader

PAUL, John Lee
Riverton, Kansas
Pre-Law
Press Club
International Relations Club
Eta Iota Tau, Treasurer
Student Council
"Great Big Doorstep"
Speech Club

PLAKE, Barbara Jean
Afton, Oklahoma
Business Education
Eta Upsilon Gamma,
Vice-President
Student Council
Press Club
Girls Dormitory President
Society Editor, Norsewind

RAGSDALE, Thurman L.
Tulsa, Oklahoma
Business Administration

NICKS, Robert B.
Fairland, Oklahoma
Electrical Engineering

PARKISON, Genevieve S.
Cardin, Oklahoma
Home Economics

PEARCE, Albert L.
Miami, Oklahoma
Military Science
International Relations Club

POSTIER, Ervin L.
Centralia, Oklahoma
Agricultural Engineering
Engineers' Club

RICHARDVILLE, Thomas H.
Miami, Oklahoma
Business Administration
Phi Sigma Nu, Vice-President

ROOMSBURG, Francis E.
Afton, Oklahoma
Business Administration
Phi Sigma Nu, Reporter



RILEY, Owen
Disney, Oklahoma
Physical Education
O Club

ROWLEY, Virginia Lee
Fairland, Oklahoma
English
Phi Theta Kappa, Secretary
Aggiettes
Class Reporter

RUBIN, Margery Anna
Fairland, Oklahoma
Secondary Education
International Relations Club



SELF, Leon G.
Westville, Oklahoma
Animal Husbandry
Aggies

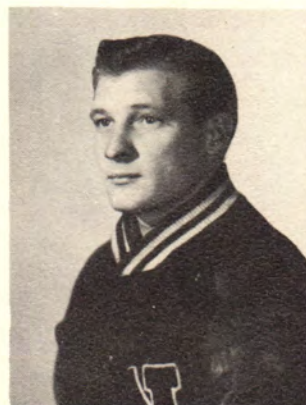
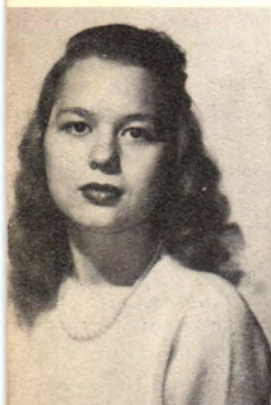
SIGLE, Norman K.
Commerce, Oklahoma
Engineering
Phi Sigma Nu

SIMMONS, Jane Ann
Miami, Oklahoma
Physical Education
Sigma Iota Chi



SIMPSON, Stanley
Pampa, Texas
Petroleum Engineering
Engineers' Club
Eta Iota Tau

SMITH, Joseph J.
Quapaw, Oklahoma
Business and Law
Phi Sigma Nu
Sophomore President
Student Council President
Viking Business Manager



SMITH, Judith D.
Miami, Oklahoma
Arts and Science
Sigma Iota Chi

SMITH, William C.
Nowata, Oklahoma
Arts and Science

STATON, Gladys Marie
Miami, Oklahoma
Arts and Science
B. S. U.



STEELE, Jack W.
Miami, Oklahoma
Arts and Science

STIVER, Charles Ray
Grove, Oklahoma
Advertising
Phi Theta Kappa
Eta Iota Tau, President &
National Secretary
International Relations Club
Press Club, Vice-President
Student Council
Norse Wind, Associate Editor
Viking Art Editor



TETIRICK, Ted W.
Tulsa, Oklahoma
Political Science
"Our Town"
Viking Co-Editor

THARP, Don
Miami, Oklahoma
Arts and Science

THOMPSON, Bob Lee
Welch, Oklahoma
Civil Engineering
Engineers' Club
O Club



TROLINGER, George
Miami, Oklahoma
Agriculture

VANHOOSER, Veralee
Big Cabin, Oklahoma
History
Phi Theta Kappa
Aggiette
"Our Town"

VAUGHAN, Cecil
Nowata, Oklahoma
Agriculture



VINCENT, George
Miami, Oklahoma
Business Administration

VOYLES, Billye
Vinita, Oklahoma
Art
Sigma Iota Chi

WATT, Paul
Pryor, Oklahoma
Electrical Engineering
Engineers' Club
Eta Iota Tau

WILLS, Paul F.
Vinita, Oklahoma
Business
Eta Iota Tau
Band

WITTY, Tom
Oklahoma City, Oklahoma
Engineering
Engineers' Club

WOFFORD, James
Oologah, Oklahoma
Business Education
Dean's Honor Roll

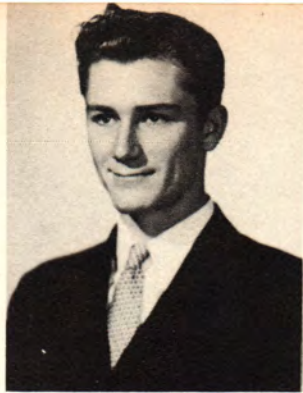


WOOTEN, Grace
Miami, Oklahoma
Education
International Relations Club

WORKS, Wilton W.
Miami, Oklahoma
Pre-Law
International Relations Club

WORRELL, David J.
Pryor, Oklahoma
Electronics
Engineers' Club

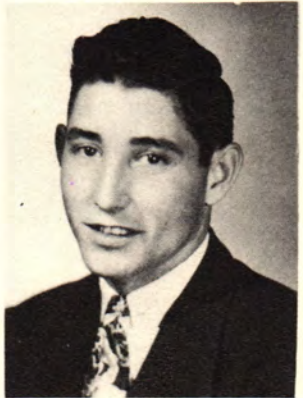




ZEBERT, Nadine
Wyandotte, Oklahoma
 Dramatics
 Sigma Iota Chi, Secretary
 Pep Club
 "Our Town"
 Class Treasurer
 Cheer Leader

CLEVELAND, E. Eugene
Miami, Oklahoma
 Pre-Med

CORDRY, Harry
Vinita, Oklahoma
 Business
 Phi Sigma Nu



GAVIN, Jack E.
Galena, Kansas
 Civil Engineering
 Engineers' Club

JOHNSTON, Robert
Leach, Oklahoma
 Business Administration

LAMM, Robert F.
Afton, Oklahoma
 Business



TRASK, Norvel J.
Miami, Oklahoma
 Physical Education
 O Club

Sophomores Not Pictured

AMOS, LaDena
 AMOS, Leonard L.
 ATKINSON, Lloyd J.
 BEAUCHAMP, Herbert
 BENEDICT, Elmo
 BESS, Willie
 BLACK, Robert
 BOND, Basil L.
 BRACKEEN, Wilfred
 BROYLES, Virgil
 BRYAN, Richard
 BUCHANAN, James
 BURKE, Harold
 CAPPS, Donald
 COLEY, Max
 COOPER, Garland
 CROWDER, Leroy
 CULLEY, Courtney
 DEFFENBAUGH, Frank
 DeGRAW, Billy
 DELANEY, Carroll
 DODSON, William
 DOTY, Charles
 DYE, Tim
 EAST, Hubert

FALLING, George
 FRISBIE, Johnie
 GAINES, Earl E.
 GARNER, Ernest
 GIBSON, Lloyd
 GIBSON, Royal F.
 GILES, Marion A.
 GILLELAND, Orval
 GROSS, Johnie Pearl
 HARVEY, Roddie G.
 HAYMOND, Charles
 HECKSHER, Julius
 HOFFMAN, Claude
 HOPPER, Thomas
 HORN, Robert C.
 HUDGENS, William
 HUDSPETH, Jack
 HUFFMAN, Jesse
 KELLOGG, William
 KING, Brian J.
 KINION, Clarence
 KROKROSKIA, Edwin
 LEMASTER, Waite
 LEMASTER, Wade
 LEWIS, Robert

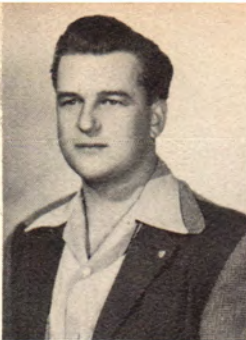
LOCK, Aaron C.
 LOVEALL, Patricia
 LYKINS, James R.
 McCORD, Emmett
 MAY, Bob
 MELTON, Billy G.
 MILLER, Jackson
 MOBRA, James F.
 MORELAND, J. W.
 MURPHY, Thomas
 PALMER, Moody
 PARKER, George
 PECK, James W.
 PENROD, Eugene
 POOLE, John
 RANEY, Norma
 REAVIS, Paul
 REEVES, Richard
 ROBINSON, Joe
 ROMBACK, Joe
 ROWLEY, Houston
 ROYAL, James
 RUARK, Jerry
 RUSSELL, Donald L.
 RUTHERFORD, Patsy

SAUNDERS, F. Eugene
 SCEARCE, Forrest
 SCHMUCKER, Billie
 SCHRIMPSCHER, Matthias
 SMITH, Joseph T.
 SMITH, Robert
 SOOTER, Kenneth
 SOUTHERLAND, Lawrence
 STONE, Clement
 TAYLOR, Arnold L.
 TEAL, James R.
 TIPPIT, Larmer
 TRASK, Stanley
 TUNNELL, Leonard
 UTTER, Leon
 VANN, Billy G.
 VICTOR, Paul
 WALTON, Alvin C.
 WARNER, J. C.
 WATKINS, Junior L.
 WATKINS, William E.
 WILLIAMS, James A.
 WILLIAMS, Kenneth
 WILLIAMS, Walter
 WINTERS, Warren G.

Freshmen

President ----- RAYMOND GAILEY
Vice President ----- JAMES R. HALL
Secretary ----- ARONDA SUE CAYWOOD
Treasurer ----- J. E. LANDON
Representatives ----- BILL ALLEY
SAMUEL GROUNDS





ADAMS, JESS
Tulsa, Oklahoma
ALLEY, BILL
Tulsa, Oklahoma

BABST, ARNOLD
Miami, Oklahoma
BARNETT, WILFORD
Bluejacket, Oklahoma

BENSON, ROBERT
Mt. Vernon, Missouri
BLANKENSHIP, DONALD
Catoosa, Oklahoma

BOYD, DAVID
Grove, Oklahoma
BRADFORD, JAMES
Commerce, Oklahoma

BROWN, DORIS
Big Cabin, Oklahoma
BRYAN, VIRGINIA
Plano, Texas

CAYWOOD, ARONDA SUE
Bernice, Oklahoma
CHANCE, PIERCE C., JR.
Dallas, Texas

ANDERSON, ROBERT
Columbus, Kansas
ANDREW, ALBERT
Nowata, Oklahoma

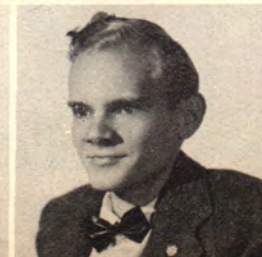
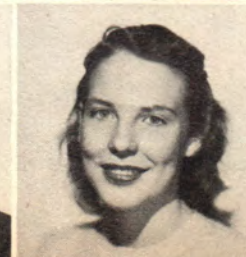
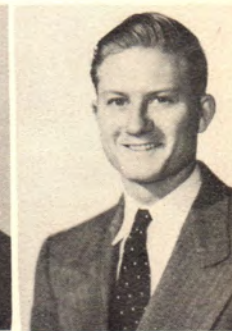
BEEBE, FAYE
Miami, Oklahoma
BEEBE, WILLIAM
Miami, Oklahoma

BLANKENSHIP, WAYBURN
Pryor, Oklahoma
BLEVINS, FRANCIS
Vinita, Oklahoma

BRANSTETTER, EUGENE
Pryor, Oklahoma
BRITT, DAYLE
Miami, Oklahoma

BUNGE, VICTOR A.
Deridder, Louisiana
CANTWELL, KENNETH R.
Seneca, Missouri

CLEVELAND, DONALD
Chetopa, Kansas
CLEVELAND, JUANITA
Miami, Oklahoma





COLLINS, ROBERT
Broken Arrow, Oklahoma
CONNER, DELPHIA LOUISE
Grove, Oklahoma

DUNN, HARRIETT
Wyandotte, Oklahoma
FARMER, ARCHIE
Sallisaw, Oklahoma

FREEMAN, DIXIE
Nowata, Oklahoma
GAILEY, RAYMOND
Miami, Oklahoma

GLADDEN, GWENDOLYN
Miami, Oklahoma
GRAHAM, PHYLLIS
Miami, Oklahoma

GRUENBERG, WILLIAM
Chelsea, Oklahoma
GUNN, LINCOLN
Grove, Oklahoma

HALL, JAMES R.
Fairland, Oklahoma
HANEY, GEORGE
Big Cabin, Oklahoma

CUNNINGHAM, WILLIS
Miami, Oklahoma
DODSON, WILLIAM
Morris, Oklahoma

FINE, BOYCE
Sallisaw, Oklahoma
FORTNER, CLAUDIE
Miami, Oklahoma

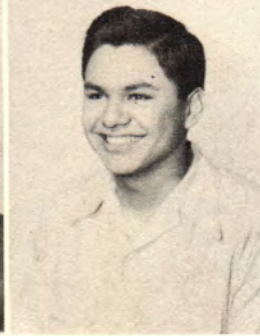
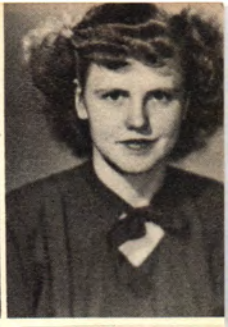
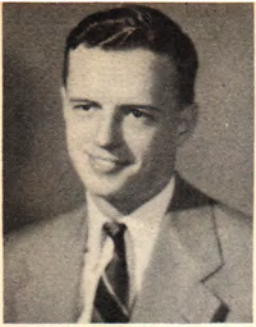
GAY, FREDDIE
Adair, Oklahoma
GEORGE, WILLENE
Miami, Oklahoma

GRIGG, RAY
Chelsea, Oklahoma
GRUBB, ROSEMARY
Miami, Oklahoma

HALE, FRANCES
Miami, Oklahoma
HALL, DOTTIE
Fairland, Oklahoma

HANKINS, BILL
Miami, Oklahoma
HANSFORD, FRANKLIN, JR.
Miami, Oklahoma





HARDY, HARMON S., JR.
Afton, Oklahoma
HARGROVE, FRANK C.
Miami, Oklahoma

HATFIELD, PATSY JANE
Cardin, Oklahoma
HAYNES, ETHEL ALLIE
Commerce, Oklahoma

HOUSMAN, BETTY
Miami, Oklahoma
HUNTER, GLENN
Miami, Oklahoma

JACKSON, AMOS L.
Kansas, Oklahoma
JAGGARS, PAUL JAMES
Pryor, Oklahoma

KELSEY, JIMMIE LOUIS
Chetopa, Kansas
KING, LEO CORNELIUS
Holdenville, Oklahoma

LAMPSON, PATSY
Welch, Oklahoma
LANDON, JAMES E.
Seneca, Missouri

HASLETT, INA LOU
Commerce, Oklahoma
HATCHER, DELFORD
Granby, Missouri

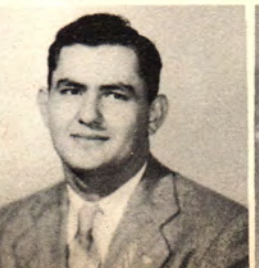
HOLLIS, JERRY R.
Miami, Oklahoma
HOUCK, VIOLA MARIE
Southwest City, Missouri

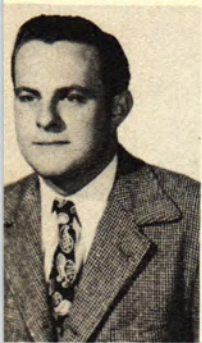
HUNTER, JIMMY
Miami, Oklahoma
HUTCHISON, ROGER
Miami, Oklahoma

JONES, BILLY JOE
Miami, Oklahoma
KOURI, JOSEPH AL
Chelsea, Oklahoma

KOCHEN, HENRY
Lima, Peru
LAKEY, GENEVA
Welch, Oklahoma

LEGG, CARL EUGENE
Centralia, Oklahoma
McCOMB, JOHN WESLEY,
Big Cabin, Oklahoma





McGAUGHEY, RUTH
Commerce, Oklahoma
McLAUGHLIN, W. C.
Miami, Oklahoma

MEADOWS, HOWARD
Wyanotte, Oklahoma
MERRIOTT, WILFORD EUGENE
Stilwell, Oklahoma

MILLER, JOHN
Pryor, Oklahoma
MILLS, NORMAN
Oologah, Oklahoma

MOORE, DONNA MAY
Columbus, Kansas
MOORE, LELAND EUGENE
Fairland, Oklahoma

MUNSON, LEONARD L.
Miami, Oklahoma
MUNSON, ROSALIE
Miami, Oklahoma

PATTON, ERMA-JEAN
Salina, Oklahoma
PEES, JAMES W.
Miami, Oklahoma

MALONE, HELEN LOUISE
Seneca, Missouri
MATLOCK, MARY M.
Afton, Oklahoma

MILLER, CHARLES
Centralia, Oklahoma
MILLER, DORETHEA MAE
Afton, Oklahoma

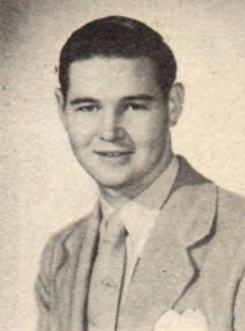
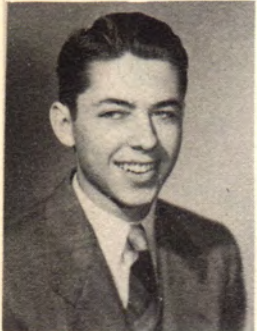
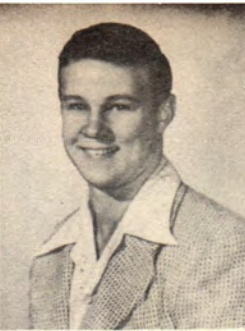
MISENHIMER, VIRGINIA
Miami, Oklahoma
MOODY, WILLIAM HENRY
Galena, Kansas

MORGAN, MARY RUTH
Coody's Bluff, Oklahoma
MOWERY, BETTY LOU
Strang, Oklahoma

OAKLEY, DEANIE
Vinita, Oklahoma
PACKARD, LOREN L.
Miami, Oklahoma

PLEMONS, JOE A.
Catoosa, Oklahoma
POWELL, ALICE GENEVIEVE
Vinita, Oklahoma





POYNOR, BILLYE SUE
Westville, Oklahoma
PRATT, LAMARR NEILL
Miami, Oklahoma

RENO, GEORGE
Clopp, Oklahoma
ROWTON, RUTH
Picher, Oklahoma

SARGENT, NED
Seneca, Missouri
SEAT, BOB
Miami, Oklahoma

SIMPSON, DON
Edwardsville, Illinois
SIMPSON, FLOYD JACK
Edwardsville, Illinois

SPRATT, HERBERT
Mt. Vernon, Missouri
STADTHAGEN, OSCAR
Jinotega, Nicaragua

STANLEY, ROBERT REX
Commerce, Oklahoma
STROYICK, DOROTHY
Baxter Springs, Kansas

PRAYTOR, DWIGHT
Bluejacket, Oklahoma
PROPP, MARY SUE
Adair, Oklahoma

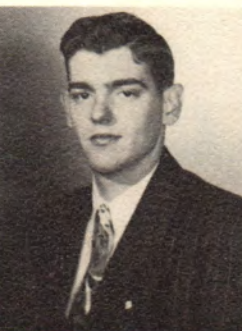
RUSSELL, JACK G.
Commerce, Oklahoma
RUSSELL, WANDA
Ft. Smith, Arkansas

SHERWOOD, LLOYD
Seneca, Missouri
SILER, SHERMAN L.
Perry, Oklahoma

SMITH, SHIRLEY
Miami, Oklahoma
SMITH, MARSHALL
Quapaw, Oklahoma

STADTHAGEN, SALVADOR
Jinotega, Nicaragua
STAND, JOHN LEE
Miami, Oklahoma

SWEARENGIN, CLEOTA
Salina, Oklahoma
TAYLOR, FRED
Pryor, Oklahoma





ABDOO, VERNON
 ADAIR, HENRY DREW
 ADDINGTON, LEWIS
 ALLGOOD, MARION DAVID
 ARMSTRONG, BILLY GEORGE
 BAIRD, WILLIAM MAC
 BARTLETT, DAVID CHARLES
 BASH, LEROY
 BAXLEY, J. T.
 BETTS, HENRY ALLEN
 BISHOP, CHARLES V.
 BITTING, NEAL W.
 BOGLE, ROGER M.
 BRANSON, EUGENE EWELL
 BREWER, JOHN HENRY
 BREWINGTON, J. W.
 BROYLES, DON LELAND
 BRYAN, ROZANNE
 BUDD, JOSEPH VANN
 BURKHOLDER, JAMES
 BURTON, GENE KENNETH
 CARR, CLIFFORD L.
 CAUGHRAN, IRA LLOYD
 CHASTAIN, ORVAL
 CLINKSCALES, CLARENCE
 COFFMAN, WILLIAM E.
 CONE, JOHN ALAN
 COOPER, JACK ARTHUR
 COTTER, MARJORIE LOUISE
 CROW, CHARLES LEE
 CROW, LESTER LEVI
 CULLEY, DORIS SINGLETON
 CUNNINGHAM, JAMES R.
 DENT, PAUL M.
 DILLON, GENE DELMAR
 DUNAWAY, JOHN
 DUNCAN, DONALD WAYNE
 DUNLAP, WAYMAN
 DOUTHITT, L.
 EMARTHLA, PAULINE
 EVINGER, KENNETH
 FARLEY, JAMES
 FRASIER, THOMAS
 FREEZE, RALPH R.
 GIBBENS, JACK
 GILMORE, FLOYD, JR.
 GOODNER, BILL
 GOSSELINE, R. G.
 GRAY, RICHARD T.
 GREEN, ROBERT F.
 GREGERSON, ANN
 GROOM, GUY, JR.
 GROUNDS, SAMUEL J.
 HADLEY, HOWARD PAUL
 HALL, ERVIN EUGENE
 HAMPTON, BILLY G.
 HAMPTON, ROSA LEE
 HARPER, RAY
 HENLEY, STRATTON G.
 HENSON, JAMES HENRY
 HENSON, WILMA JEAN
 HIGSONS, JIM
 HINDS, ROBERT MARSHALL
 HIVELY, ROBERT
 HIXSON, THOMAS
 HOLLAND, JAMES R.
 HOLMES, RICHARD E.
 HUFFMAN, BILL
 JACKSON, CARROL
 JACKSON, WILLIAM WAYNE
 JAMES, TERRANCE C.
 KEETON, PHYLLIS ANN
 KELLEY, WILLIAM
 KILLION, DON ELLIOTT
 KIMMON, WILLIAM ERVIN
 KIRKHEAD, DON GAINES
 KISSIRE, BASIL
 KUNS, WANDA KATHRYN
 LEGG, JAMES ELDON
 LOVELACE, DELBERT
 LOWERY, JAMES E.
 MCDONN, FRED FREEMAN
 McFERRON, ALICE JUNE
 McGRATH, FOWLER JOHN
 McGRATH, JAMES A.
 McINTOSH, PAUL
 MARTIN, CHARLES JENNINGS
 MARTIN, JAMES, JR.
 MARTIN, CLARENCE, JR.
 MARTIN, VIRGIL LEE
 MASTERTSON, CHARLES B.
 MATTHEWS, HENRY K.
 MATTOON, WILLIAM H.
 MEEK, CHARLES EDWARD
 MEIER, JACK
 MERICLE, DAVID
 MOORE, ROTHEL D.
 MORGAN, MARION LADELL
 MURPHY, CHARLES C.
 MURRAY, JAMES
 MUSKRAT, JOE
 MYERS, ROY
 NEWBURN, FRED KING
 OWENS, RALPH N.
 PARKER, DELORIS JEAN
 PARRISH, JOE L.
 PARTAIN, LOUIS H.
 PENDEGRAFT, LLOYD
 PIRKEY, ROBERT LEE
 PLANT, GEORGE WILLIS
 QUAPAW, EDWARD ROBERT
 QUIRK, JOSEPH EDWARD
 RAMSEY, WILLIAM LESTER
 REDICK, EDWARD EUGENE
 RHATIGAN, EDWARD M.
 RISNER, WINFORD R.
 RITTER, KENNETH E.
 ROBINSON, DON
 ROBINSON, RICHARD P.
 ROGERS, EDWARD M.
 ROHMILLER, CALVIN E.
 ROSS, KENNETH HAROLD
 ROWDEN, BILL
 ROWDEN, JASPER FRANK
 RUTHERFORD, ROBERT F.
 SCHOLES, GEORGE
 SCHUELEN, BILL MORTON
 SCOTT, PEARL E.
 SETTLE, JAMES EARL
 SEYMOUR, BARNEY C.
 SHOULTZ, JAMES
 SMITH, NAOMI LOUISE
 SOUTHERN, JERRY
 SPAULDING, WISTON PAUL
 STEVENS, JOHN HENRY
 STOOFS, CARL
 STATION, DICK
 TEAGUE, ALMA BERNICE
 THOMPSON, ROBERT CLYDE
 TIPTON, G. W.
 VANHOOSER, GOLDBOURNE
 WALKER, RAY
 WALLACE, FRANK W.
 WALLACE, HAROLD R.
 WALLACE, JACK P.
 WARNBERG, BOBBY L.
 WASSON, EVERETT
 WEBER, GLENN E.
 WHITMIRE, DELMER DALE
 WIEDENMANN, JERRY
 WILBURN, CHARLES E.
 WILLIAMS, PAUL BERNARD
 WILSON, GEORGE
 WILSON, WILLIAM E.
 WIMER, FRANK
 WITCHER, BOB
 WOOLDRIDGE, DONALD L.



TRISDALE, BILL
Drumright, Oklahoma
 TURNER, VANCE
Miami, Oklahoma

VANTREASE, PEGGIE
Joplin, Missouri
 WALKER, HARRY
Commerce, Oklahoma

WEBBER, DONALD
Adair, Oklahoma
 WELCH, HARRY
Sallisaw, Oklahoma

WILSON, BERT
Chetopa, Kansas
 WILSON, ROY JAMES
W'yardotte, Oklahoma

WORLEY, THOMAS
Commerce, Oklahoma
 WRIGHT, LUTHER, JR.
Miami, Oklahoma

VANHOOSER, VIRGIL RAY
Holdenville, Oklahoma
 VANPOOL, THOMAS J.
Miami, Oklahoma

WARD, BILLY JAY
Chelsea, Oklahoma
 WEBB, WILLIS
Claremore, Oklahoma

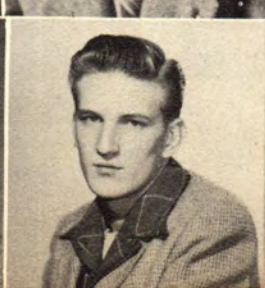
WELCH, MAYE
Sallisaw, Oklahoma
 WELLS, DOROTHY
Vinita, Oklahoma

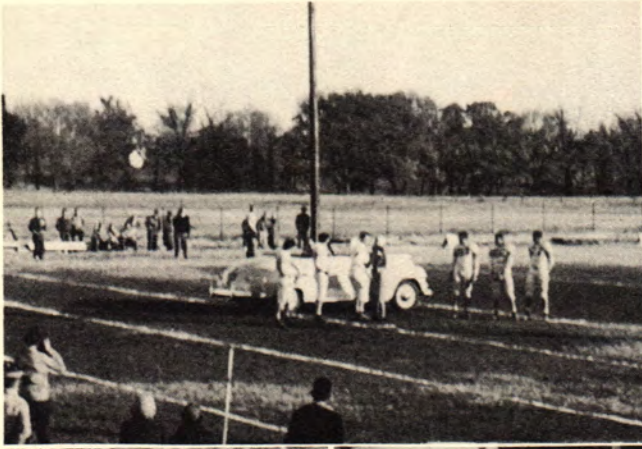
WITTE, LULA
Miami, Oklahoma
 WITTEN, EDWARD
Commerce, Oklahoma

YORK, CHARLES
Vinita, Oklahoma
 ZODROW, JOE W.
Miami, Oklahoma



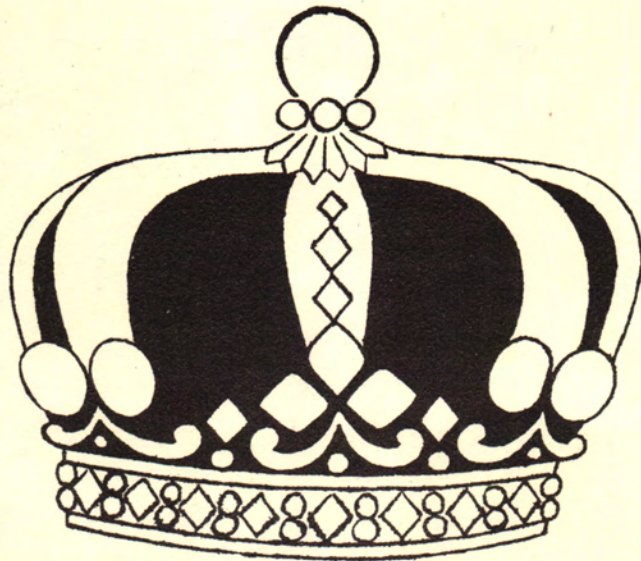
QUAPAW, EDWARD ROBERT
 QUIRK, JOSEPH EDWARD
 RAMSEY, WILLIAM LESTER
 REDICK, EDWARD EUGENE
 RHATIGAN, EDWARD M.
 RISNER, WINFORD R.
 RITTER, KENNETH E.
 ROBINSON, DON
 ROBINSON, RICHARD P.
 ROGERS, EDWARD M.
 ROHMILLER, CALVIN E.
 ROSS, KENNETH HAROLD
 ROWDEN, BILL
 ROWDEN, JASPER FRANK
 RUTHERFORD, ROBERT F.
 SCHOLES, GEORGE
 SCHUELEN, BILL MORTON
 SCOTT, PEARL E.
 SETTLE, JAMES EARL
 SEYMOUR, BARNEY C.
 SHOULTZ, JAMES
 SMITH, NAOMI LOUISE
 SOUTHERN, JERRY
 SPAULDING, WISTON PAUL
 STEVENS, JOHN HENRY
 STOOFS, CARL
 STATION, DICK
 TEAGUE, ALMA BERNICE
 THOMPSON, ROBERT CLYDE
 TIPTON, G. W.
 VANHOOSER, GOLDBOURNE
 WALKER, RAY
 WALLACE, FRANK W.
 WALLACE, HAROLD R.
 WALLACE, JACK P.
 WARNBERG, BOBBY L.
 WASSON, EVERETT
 WEBER, GLENN E.
 WHITMIRE, DELMER DALE
 WIEDENMANN, JERRY
 WILBURN, CHARLES E.
 WILLIAMS, PAUL BERNARD
 WILSON, GEORGE
 WILSON, WILLIAM E.
 WIMER, FRANK
 WITCHER, BOB
 WOOLDRIDGE, DONALD L.





Thanksgiving coronation—Look at those “Pepsodent” smiles—Watch out Charles!—Press Club Homecoming float—some co-eds!—Did the big one get away, Doc?—Gamma Homecoming float—Football banquet—January formal—Flowers to Billie.

Campus Beauties



Viking Queen

MISS BEULAH (BOOTS) EDWARDS



*Miss Edwards was styled by
the mezzanine fashion shop
of MILLNER - BERKEY.
Miss White stylist.*

*Dress...Tobe Fifth Avenue
Hat.....Original by Lecie
Coat...Original by Sycamore
Shoes Jacqueline*





★ ★ ★ ★ ★
CARL CARROLL THEATRE RESTAURANT

SUNSET NEAR VINE - PHONE HOLLYWOOD-7101

HOLLYWOOD
CALIFORNIA

February 4, 1948



Miss Mildred Gibson
Co-Editor, THE VIKING
Northeastern Oklahoma A. and M. College
Miami, Oklahoma

Dear Miss Gibson:

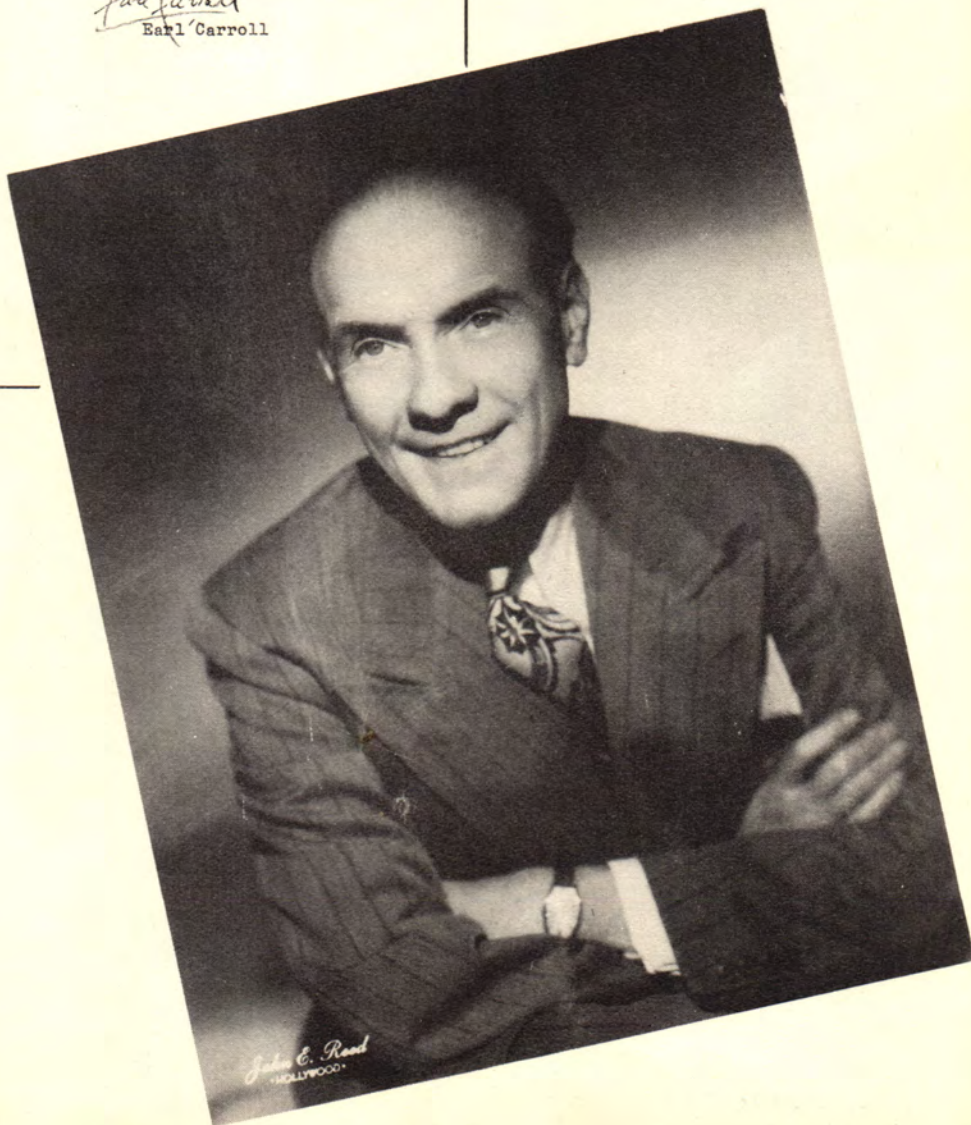
I received the photographs of the lovely contestants and because they were all so beautiful, it was very difficult to limit myself to selecting only two girls. Therefore, I chose Miss Beulah Edwards as VIKING QUEEN, Miss Dixie Freeman as FIRST MAID OF HONOR, and Miss Leatha Lynch as SECOND MAID OF HONOR.

It was a pleasure to choose the contestants and I hope that my selections will meet with the approval of those who have had the privilege of meeting all the young ladies in person.

Sincerely yours,

Earl Carroll
Earl Carroll

EC/rw





*First Maid of Honor
Dixie Freeman*

*Second Maid of Honor
Leatha Lynch*





Homecoming Queen
Shirley Smith



Football Queen
Billie Schmucker

Viking Beauty Contestants



JUDITH SMITH



RUBY FOSTER

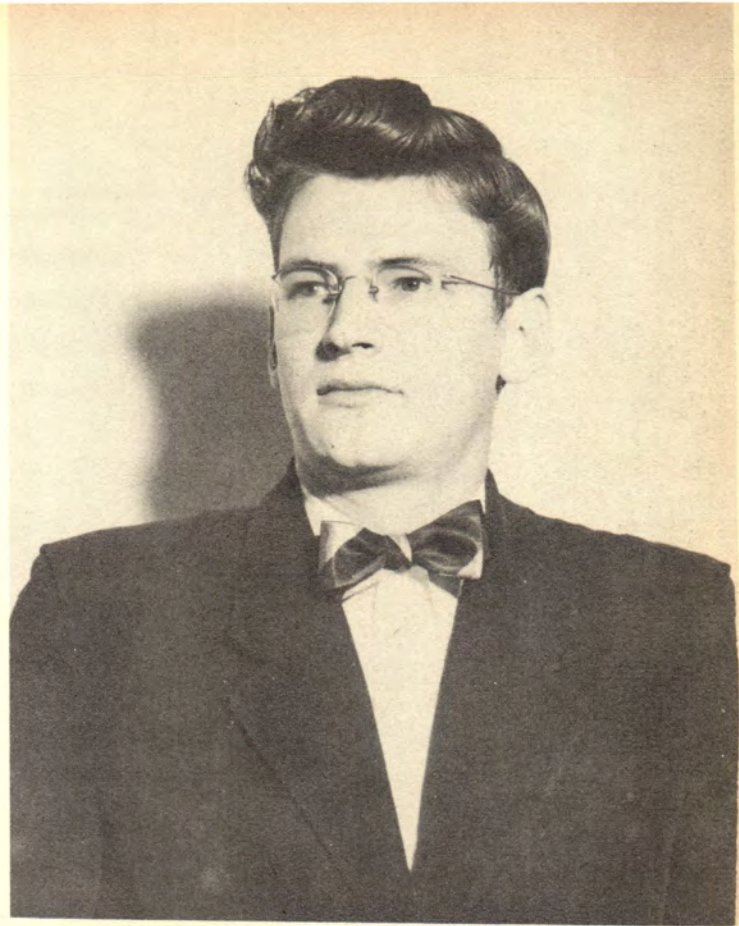
ALICE POWELL



MARY SUE PROPP



MILDRED GIBSON



DAVID BURR

Four Outstanding Students as Chosen by the Faculty

PATRICIA MURPHY



CHARLES STIVER





HANDSOMEST BOY
J. E. Landon



CUTEST GIRL
Peggie Vantrease



MOST POPULAR GIRL
Billie Schmucker



MOST POPULAR BOY
Joseph J. Smith



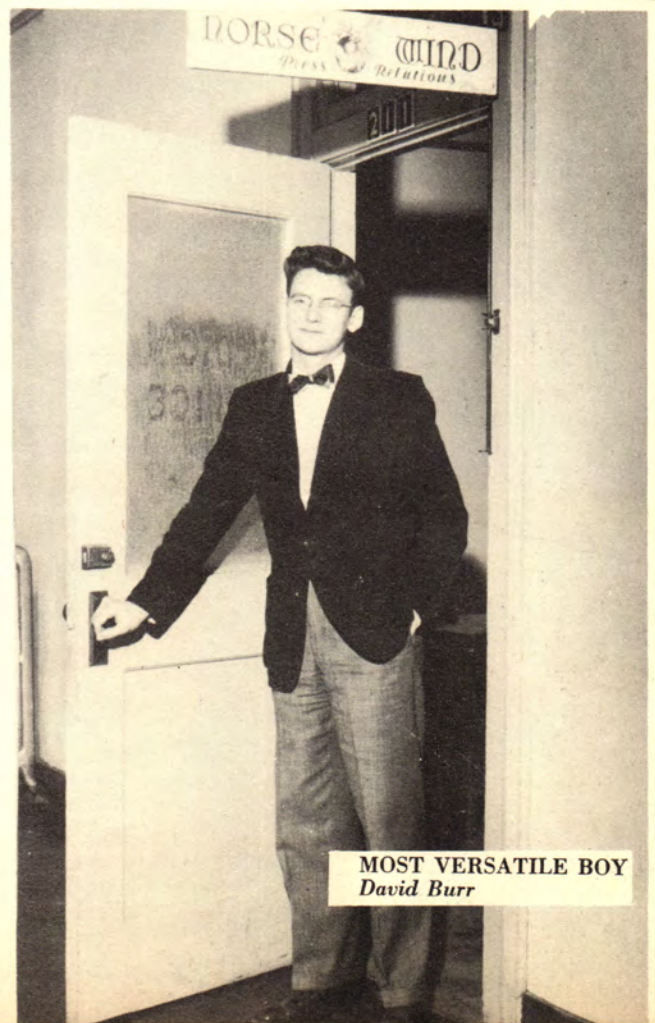
BEST DRESSED BOY
R. F. (Audie) Gibson



BEST DRESSED GIRL
Marian Mattoon



MOST VERSATILE GIRL
Mildred Gibson



MOST VERSATILE BOY
David Burr



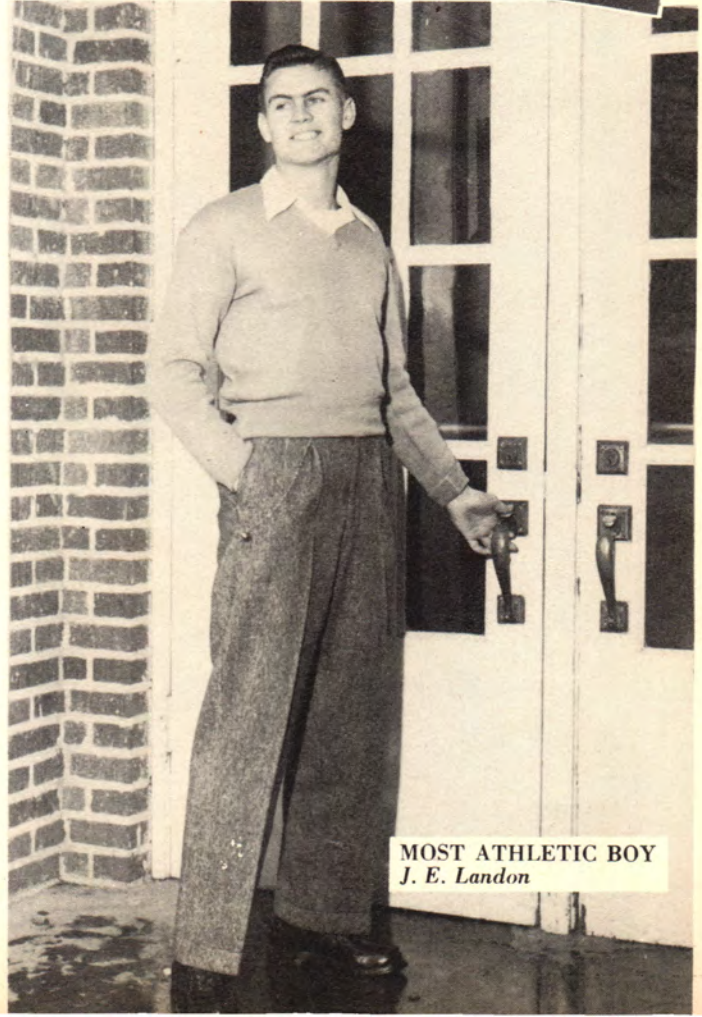
BOY MOST LIKELY TO SUCCEED
James R. Hall



GIRL MOST LIKELY TO SUCCEED
Rose Mary Minson

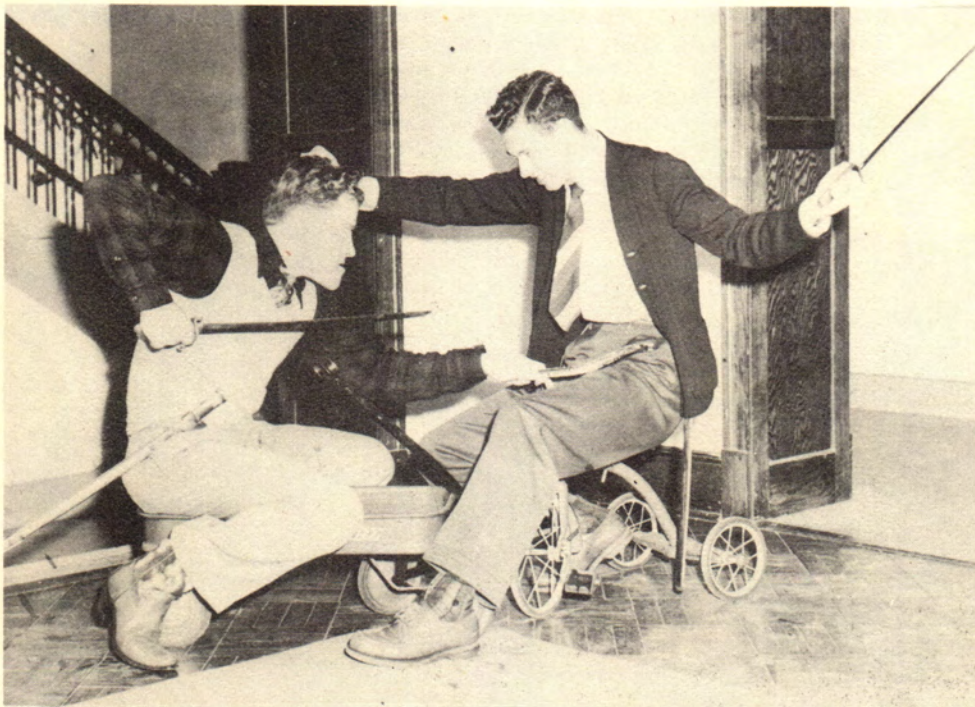


MOST ATHLETIC GIRL
Mary Matlock



MOST ATHLETIC BOY
J. E. Landon

Organizations



Student Council



MILDRED GIBSON
Secretary

JOSEPH J. SMITH
President

JAMES R. HALL
Vice President

RESPONSIBILITIES as a governing body of Northeastern Oklahoma A. & M. College are taken over by the Student Council. The group is composed of a representative from each organization on the campus. The president, vice-president, and secretary are elected by the student body.

First semester Student Council members were Charles Fergus, president; Joe Smith, vice-president; Mildred Gibson, secretary; Pat Barlow, treasurer; Charles York, cheer leader; Jerry Ruark, Charles Seabolt, Judith Smith, Barbara Plake, Jack Lilburn, Pat Murphy, Louis Green, Dick Stratton, Leon Utter, Cecil Vaughan, James Denton, Rose Mary Minson, Alvin Bearskin, Jim Pees.

Second semester Student Council members are Joseph Smith, president; James R. Hall, vice-president; Mildred Gibson, secretary and treasurer; Charles York, cheer leader; Kenneth Cantwell, John Paul, Jim Pees, Charles Stiver, Mary Matlock, Jerry Ruark, Rose Mary Minson, Samuel Grounds, Jack Lilburn, Leon Utter, Pat Murphy, Bill Alley, Alvin Bearskin, Norman James, June McFerron.





TED W. TETIRICK



MILDRED GIBSON



Business Manager
JOSEPH J. SMITH

The Viking

THE NORTHEASTERN Oklahoma A. & M. College official yearbook, the Viking, now in its second year of publication was edited and compiled with many worries, last minute rush, and fun. We hope it will be a lasting remembrance for you.

Mildred Gibson now has a few gray hairs, Joe Smith and Ted Tetirick became hoarse from their advertising

feats. The sports editor and assistants as well as feature, class and organization editors and other members of the staff put in many hours to publish the Viking.

To the members of the faculty and students, who have given assistance we extend our thanks and appreciation. We wish to especially thank Mrs. Mabel Speaker, who gave us assistance in the final wind-up and completion of the Viking, also Mrs. Etta Bruton who ably assisted us.

General Staff: Emma Lois Ewers, Ruby Foster, Phyllis Graham, Jim Pees, Charles Stiver, Bee Jay Garrison, Kenneth Garrison, Jack Meier, Dayle Britt, Joseph J. Smith, Rose Mary Minson, Lela Griffin, Marian Mattoon, Joseph Budd, Barbara Plake, James Wofford, Charles York.



Phi

Theta

Kappa



JACK LILBURN
President



LEON UTTER
Vice-President



VIRGINIA ROWLEY
Secretary and Treasurer

PHI THETA KAPPA is the National Honorary Scholastic Society of Junior Colleges. Their purpose is to foster scholarly endeavor and good citizenship among the students.

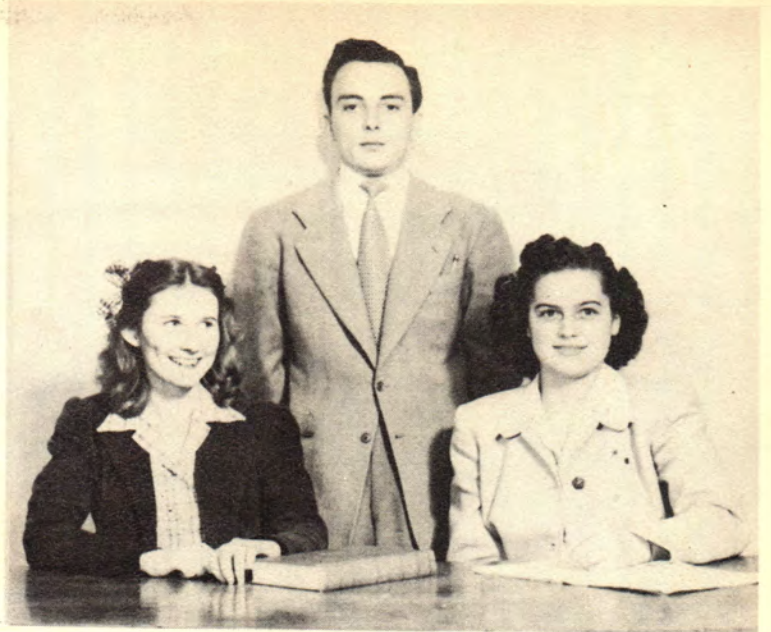
To be eligible for membership a student must be carrying at least fifteen hours with a grade point average of not less than B.

Reading left to right standing: Allie Haynes, Jack Lilburn, Jack Frisbie, Kenneth Cantwell, Norman James, Charles Stiver, Charles Miller, Jerrell Funkhouser, Austin Groeneman, Bill Graham, Phyllis Graham, Delphia Conner, Dottie Hall, Miss Vann, sponsor; Rosemary Grubb, Veralee Vanhooser, Helen Malone, Thomas Frazier, Dayle Britt, Virginia Rowley, Harriett Dunn, Mildred Gibson. *Not pictured:* Leon Utter, Moody Palmer, Alvin Bearskin, Leonard Tunnell, David Burr, Jack Simpson, Robert Black, Willis Cunningham.



International Relations Club

President ----- JAMES BUCHANAN
 Vice-President ----- GLADYS STATON
 Secretary ----- ROSE MARY MINSON



The club is working under the Carnegie Endowment for International Peace.

Back row: Oscar Stadthagen, Henry Kochen, Salvador Stadthagen, Charles Stiver, John Lee Paul.

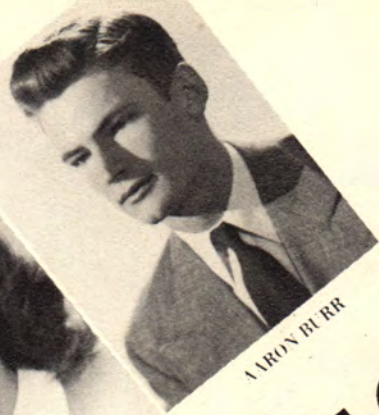
Front row: Margery Rubin, Betty Bradford, Miss Lindsey, sponsor; Rose Mary Minson, Ruby Foster.



The Editors



BELLA M. FJW IRDIS



AARON BURR

Circulation



CARL STOOPS

The Norse Wind

STUDENT PUBLICATION OF NORTHEASTERN OKLAHOMA A. & M.
They Made The Norse Wind Blow

Society



BARBARA PLAKE



Left to right: Barbara Plake, society; Charles Stiver, associate; David Burr, editor; Bill Buergey, circulation; Boots Edwards, editor; Jerry Ruark, advertising; Charles Fergus, business, and Walter Mitchell, advertising.

Sponsor



RAY VANDERBERG

The Norse Wind

STUDENT PUBLICATION OF NORTHEASTERN OKLAHOMA A. & M. COLLEGE
CHARLES STIVER

BILL ALLEY

Associates



MARY JANE SPEER



Press Club

OFFICERS

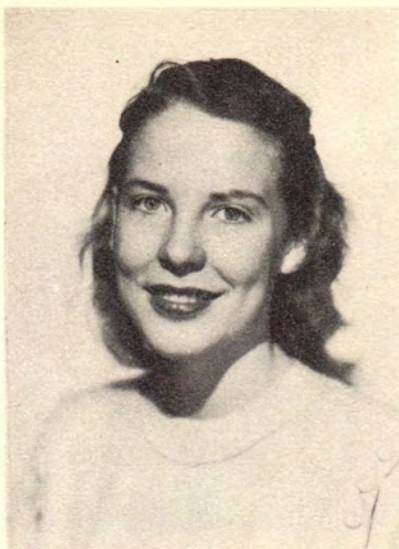
President.....BILL ALLEY
 Vice-President.....CHARLES STIVER
 Secretary.....BEULAH EDWARDS
 Student Council Representative.....JOHN LEE PAUL



The Press Club is to add social and cultural benefits to the staff of the Norse Wind and journalism students.



Standing: James Farley, Curtis McLaughlin, Jack Simpson, James Settle, Bill Trisdale, Carl Stoops, Herbert Hodge, Ray Grigg, John Paul, Ray Vanderburg, sponsor. *Seated:* Patsy Hatfield, Bill Buergey, Barbara Plake, Charles Stiver, Betty Sue Doty. *Not pictured:* Francis Blevins, J. T. Baxley, Bill Rowden, David Boyd, John Brewer, Bert Bryant, Stanley Corley, James Cunningham, Jack Denton, Gene Dillon, A. L. Douthitt, Emma Lois Ewers, Jerrell Funkhouser, Robert Green, Stratton Henley, Wilma Henson, Thomas Hixson, William Kelley, Marion Morgan, George Parker, Erma Jean Patton, James Peck, Mary Sue Propp, Robert Tompson, Don Robinson, Don Simpson, Joseph Smith, Ted Tetirick, Don Tharp, Harold Wallace, Kenneth Williams, Thomas Worley, George Foust, Moody Palmer, Wanda Russell, Warren Winters.



DALE BRITT
President

Eta Upsilon Gamma

ETA UPSILON GAMMA is the oldest sorority in National Junior College Panhellenic, and was founded at Christian College, Columbia, Missouri, in 1901. The flower is the yellow rose and the colors, olive green and gold.

Members of this sorority are chosen on the basis of character, personality, friendliness, and scholastic standing.

To begin the sorority year in the fall of 1947 were Gail Alexander who later enrolled at A. & M. at Stillwater, Barbara Plake, and their sponsor, Miss Ruth Arrington.

There are ten women on the campus of Northeastern A. & M. who are wearing the diamond-shaped pins. They meet once each week and take part in social activities on the campus.

The success of Eta Upsilon Gamma as a sorority would not be complete without the help of our Worthy Patronesses.



OFFICERS

- President*.....DAYLE BRITT
- Vice-President*...MARY MATLOCK
- Secretary*.....BETTYE BAKER
- Treasurer*.....MARY SUE PROPP
- Reporter*.....ROSEMARY GRUBB



Standing: Gail Alexander, Patsy Lampson, Barbara Plake, Mary Matlock, Dixie Freeman, Betty Mowery, Gwen Gladden, Claudie Fortner, Mary Morgan, Mary Sue Propp.

Seated: Bettye Sue Baker, Rosemary Grubb, Dayle Britt, Wilma Henson.

Pledges

Back row: Deloris Parker, Ruth McGaughey.

Front row: Phyllis Keeton, Mary Jane Speer, sponsor; Frances Hale.





OFFICERS: Billie Schmucker, president; Nadine Zebert, treasurer; Wanda Russell, reporter; Ann Gregerson, secretary. Not pictured: Jane Ann Simmons, pledge captain.

Sigma Iota Chi



Back row: Ann Gregerson, Billie Poynor, Wanda Russell, Betty Housman, Judy Land, Harriett Dunn, Rosie Hampton.

Second row (seated): Nadine Zebert, Jane Ann Simmons, Judith Smith, Willene George, Joanna Hunt, Billie Schmucker.

Front row: Paula Dugger, Margie Cotter, Virginia Bryan, Billye Voyles, Deanie Oakley, Lois Ewers, Delphia Conner, Wanda Kuns.

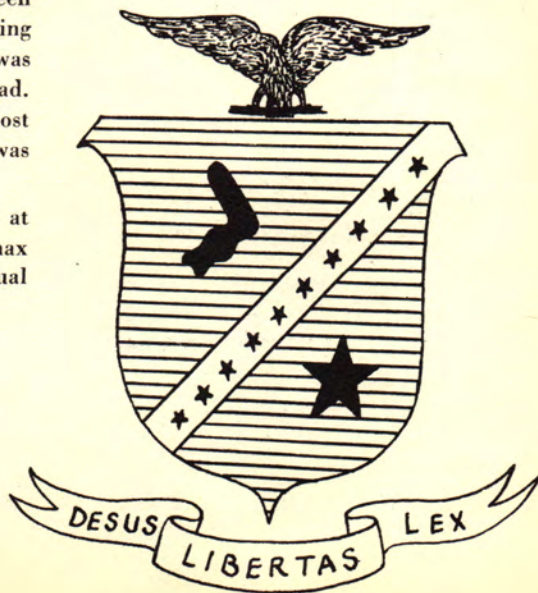


SIGMA IOTA CHI Sorority was founded in 1903 with its first capter in Alexandria, Louisiana. There are now thirteen active chapters located in nine different states. Tau chapter was organized in 1928.

Many are the honors and accomplishments accorded Tau chapter this year. Doretha Miller was the Sigma candidate for homecoming queen and Judith Smith was candidate for Viking queen. During the year, Billie Schmucker was chosen football queen by the boys of the squad. The student body selected her for the most popular girl on the campus. Nadine Zebert was given the chapter's friendship pin.

The annual Christmas formal dance held at the Country Club, December 12, was the climax of the first semester activities. The annual spring formal dance was equally successful.

MRS. GLADYS COPEN
Sponsor





GEORGE SPEER
National Vice-President



- President.....CARL STOOPS
 Vice-President.....JAMES DENTON
 Secretary.....JESS ADAMS
 Treasurer.....EUGENE BRANSTETTER
 Sergeant-at-Arms.....HENRY KOCHEN
 Pledgemasters.....STANLEY SIMPSON
 WAYBURN BLANKENSHIP
 Reporter.....JOHN PAUL
 Representative.....CHARLES STIVER

Eta Iota Tau



Second Semester Pledges: James Farley, John H. Meadows, Salvador Stadthagen, John Stand, Oscar Stadthagen, Bill Huffman, Jack Cooper.

ON OCTOBER 15, 1946, the L. D. B. Fraternity was re-organized by a group of energetic young men whose chief interest was to stimulate school spirit.

From that time on, whether it was waving Roman candles or flourishing paint brushes, the "White Devils" proved themselves ardent supporters of athletics and other school activities. Spectators were given colorful halftime displays at many of the home games and found propaganda spread by the local "painters union" throughout the tri-state area.

In February, 1947, just four months after the fraternity was reorganized, it joined with a fraternity in Athens, Tennessee, to form the newest of the national junior college fraternities, Eta Iota Tau.





Standing: John Mattox, Clarence Clinkscales, Charles Seabolt, Eugene Branstetter, Wayburn Blankenship, Jess Adams, Leon Utter, Stanley Simpson, Kirby Stricklin, Everette Gray, Jerry Southern, Mr. Little, sponsor; David Mericle.

Seated: James Denton, Paul Wills, J. T. Blackburn, Walter Mitchell, Charles Stiver, Henry Kochen, Don Penrod, Leroy Combs, John Paul, Paul Watt.

Not pictured: Bill Hudgens, Thomas Frasier, Paul Reavis, Cecil Vaughan, Tommy Hubbard.

UPON BECOMING Beta Chapter, the fraternity elected George Speer as vice-president to the national council, and Charles Stiver, national secretary. Alpha Chapter in Athens, Tennessee, named the national president and treasurer.

Two new chapters, one at Potomac State School, Keyser, West Virginia, and another at Edgewood School in Barrington, Rhode Island, are being organized through the national council.

The Fraternity is made up of a group of regular fellows who love fun second only to food. The strong spirit of brotherhood which prevails is the assurance of continued organizational solidarity.





Phi Sigma Nu

THE LEADERS—Norman Sigle, panhellenic representative; Bill Buergey, secretary; Glenn Hunter, treasurer; Ralph Connely, sergeant-at-arms; Tom Richardville, vice-president; Charles Ogden, president. Not pictured: Jerry Ruark, grand councilman.

THE FOLLOWERS—Second Semester pledges—Bob May, Bill Alley, J. R. Hall, Bill Mattoon. Not pictured: Bill Schulein.

THE PHI SIGMA NU Fraternity has consistently maintained throughout the 1947-48 school year a high calibre of leadership on the local campus. Top spots which were captured by members include the Student Council presidency, Charles Fergus and Joe Smith; editor of the Norse Wind, David Burr; state college secretaryship of the League of Young Democrats, Bill Alley, and more lesser offices.

The crowning achievement for the fraternity was the selection of Miss Beulah "Boots" Edwards as Sweetheart of Phi Sigma Nu and her later selection as Queen of the Viking.

Social activities included two chicken dinners, Christmas and spring formals, and various informal smokers and rush parties.





| | | |
|----------------------|----------------------|-------------------|
| Robert Bath, sponsor | Tom Richardville | Leland Moore |
| David Burr | Ralph Connely | Harry Cordry |
| Charles Ogden | Leo King | Keith Dowell |
| Bill Downum | Francis Roomsburg | Bill Ramsey |
| Jerry Ruark | Austin Groeneman | Joe Zodrow |
| Walter Williams, Jr. | E. L. Hunnicutt, Jr. | Charles York |
| Charles Fergus | Bill Buergey | Curtis McLaughlin |
| Joe Smith | Norman Sigle | Glenn Hunter |



Aggiettes

President.....ROSEMARY CHEEK
Vice-PresidentSHIRLEY SMITH
Secretary-Treasurer ____ALICE POWELL
Representative.....PAT MURPHY
Reporter.....MARIAN MATTOON
Sponsor.....MRS. MABEL SPEAKER

THIS ORGANIZATION strives to develop and promote standards of home and family life for home economics majors. It also purposes to urge students to prepare themselves for a home economics profession.

Back row: Mrs. Speaker, sponsor; Claudie Fortner, Gwen Gladden, Betty Mowery, Pauline Emarthla.
Center: Ruth McGaughey, Rose Mary Minson, Leatha Lynch, Naomi Smith, Virginia Lynch, Pat Murphy.
Front row: Shirley Smith, Veralee Vanhooser, Rosemary Cheek, Alice Powell, Rosalee Munson.



Aggie Society

THE FIRST ORGANIZATION of Agriculture students was started in the fall of 1946 as the Aggie Club. In October, 1947, the Aggies met and reorganized as the Aggie Society of N. E. O. A. & M. College.

The object of the society is the promotion of education, co-operation, and a high spirit of fellowship among agricultural students. Through many fields of endeavor, a wonderful opportunity for leadership is offered agriculture students and they can better cope with the problems confronting the agriculture industry today as well as obtaining a working knowledge of the individual's place in co-operative effort.

The society fosters campus and community spirit and its membership is extended to all students enrolled in agriculture.

One of the big events of the year will be an annual spring Aggie Day picnic when members with their dates and wives will take time out for recreation, good food, and fun.



OFFICERS: James Parsons, president; Dwight Praytor, vice-president; Jim Higeons, treasurer; Jim Pees, secretary.



First row: Kirby Stricklin, Gerald Roblyer, Henry Matthews, Jerry Wiedenmann, Freddie Gay, Paul Jaggars, Emmet McCord, Dwight Praytor, Leroy Crowder, George Tipton.

Second row: Paul Elder, Joe Kouri, Rothel Moore, Jim Higeons, Norman Mills, Roy Wilson, Jim Pees, James Parsons, Harry Synar.

Third row: Otis Mathia, Roscoe McAffrey, Tommy Hubbard, J. W. Moreland, Leon Self, Boyd Allen, Samuel Grounds, Dale Whitmere.



Engineers

OFFICERS

First row: Jack Gavin, vice-president; Lela Mae Griffin, secretary; M. L. Melton, president.
Second row: Kenneth Cantwell, reporter; Billy Morris, chaplain; Stanley Simpson, sergeant-at-arms; Horace Quattlebaum, treasurer.

THE ENGINEERS' CLUB, which is the most active organization on the campus of Northeastern Oklahoma A. & M. College, was organized in September, 1946, for the purpose of acquainting students of engineering with actual engineering practices.

This club has expanded until today it is the largest chartered organization on the campus. Under the guidance of Oren E. Need, the Engineers have made several inspection trips through actual engineering projects and plants to supplement their academic studies.

The highlight of the Engineers' activities was the annual St. Patrick's Day festivities. Professional engineers delivered educational lectures and several engineering demonstrations were given. Following the Engineers' banquet, a formal dance was held in the gymnasium which was elaborately decorated with the Engineers' colors, green and white. The climax of the evening came when president M. L. Melton crowned Miss Ruth Arrington as Queen of the Engineers to reign during the succeeding year.



1947 ENGINEERS' QUEEN
Ruby Lea Foster



1948 ENGINEERS' QUEEN
Ruth Arrington

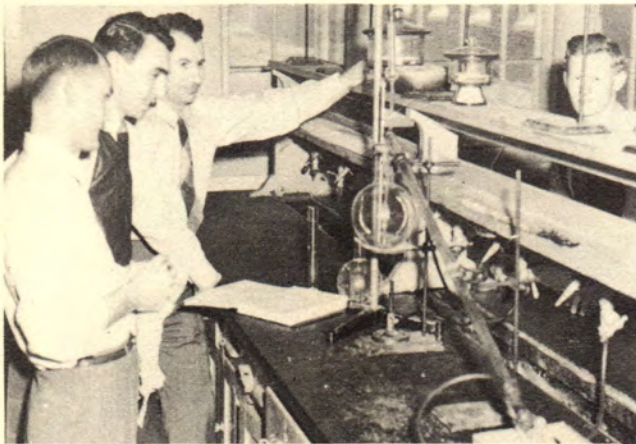




Standing, left to right: Austin Groeneman, Norman James, Bobby Anderson, William Moody, C. S. Delaney, Don Penrod, James Lowery, Gerald Housman, Lloyd Atkinson, Thomas Witty, Eugene Saunders, Hubert L. Balay, Bob L. Thompson, Henry Funderburg, Stanley Simpson, Ervin Postier, Kenneth Fisher, Robert Smith, William Kellogg, Paul Watt.

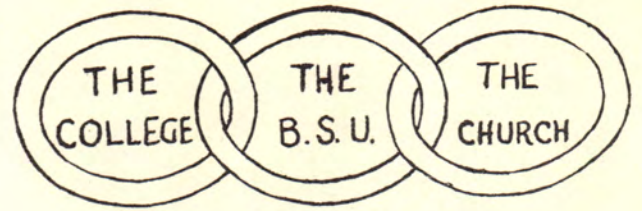
Seated, left to right: J. K. Duncan, Oren E. Need, Horace Quattlebaum, Richard Holmes, M. L. (Joe) Melton, Ruby Foster, Lela Griffin, Billy Morris, Robert Horn, Henry Kochen, Bill Gruenberg, Jack Clabaugh, Jack Gavin, Kenneth R. Cantwell.

Not pictured: Billy Hampton, Forrest Scarce, Leon Utter, Jack Lilburn, Stanley Trask, David Worrell, Oscar Stadthagen, Waite Lemaster, Wayburn Blankenship, Harry Henson, Robert Nicks, Bill Armstrong, W. R. Hill, A. C. Lock, Basil Kissire, David Bartlett, Luther Wright, George Plant, Willis Webb.





Baptist Student Union



THE BAPTIST Student Union is an organization which coordinates the religious activity of the Baptist students of a school and community.

The Baptist Student Union was organized on this campus on September 15, 1947.

OFFICERS: Tom Murphy, representative; Paul Farley, president; Norman James, publicity; June McFerron, vice-president; Naomi Smith, vice-president; Ruth McGaughey, secretary.
 Not pictured: Terrance James, chorister; Pat Murphy, pianist, Gwen Gladden, training; Don Capps, Sunday School representative.



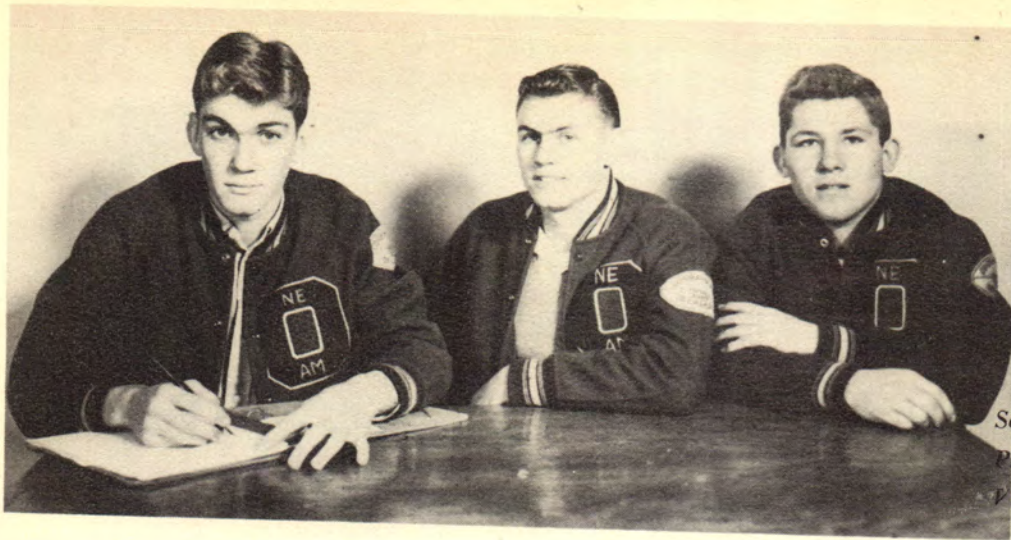
C. R. FARLEY
 Campus Founder

Back row: Terrence James, Robert Stone, Roy Wilson, Jim Pees, Tom Murphy, Don Capps, Paul Farley, Rex Stanley, Norman James, Gene Burton, Jim Higeons, Jimmy Hunter, Leonard Amos.

Front row: Ruth McGaughey, Donna Moore, Maxine Campbell, Virginia Lynch, Pauline Emarthla, Gwen Gladden, Naomi Smith, Gladys Staton, Sue Caywood, Pat Murphy, Mildred Campbell.

Not pictured: June McFerron, Betty Baker, Rosemary Grubb, Leatha Lynch, Paul Spaulding, Barbara Robbins, Virginia Rousseau, Carrol Jackson, Herman Jantz, Alice Powell, Lester Crow, Fred Claggett, Lee Brown.





O Club

The O Club is one of the oldest organizations on the campus. Membership is composed of men who have earned the athletic "O" in intercollegiate athletics.

Secretary-Treasurer--DON KINKEAD

President-----J. E. LANDON

Vice-President--J. W. BREWINGTON

Back row: J. E. Landon, Marion Morgan, Frank Mobra, Curtis Griffin, Don Kinkead, Jack Denton, Paul Williams, Assistant Coach Rigney.

Center: Bill Rowden, Orville Lewis, James Brewington, Harold Wallace, Bob Tompson, Robert Collins, Coach Robertson, Leo King.

Front row: Max Coley, Joe Robinson, Bill Watkins, Paul Victor, Kenneth Garrison, Bob Thompson and Coach Fronterhouse.





Christmas at A. & M.—Phi Sig Homecoming Float—L. D. B. Christmas Float—Not lazy, just resting—Christmas program—True love—Table scene in girls' dormitory—I'll never tell—That's the way the Welch twins operate—"Legs" Rollins—Oh, Johnie!—Another L. D. B. pledge, huh?—Do Ewers and Voyles need help?—That darn sun, right in my eye—Engineer's Homecoming float—Herman and Henry, good neighbor policy—Jeepers, look closer, look closer—Looking for something Mary Jane?—Some girl, Buck.

Fine Arts



Music



The college men's quartet was one of the most popular ensembles on the campus. They were called upon time after time during the year to give many hours of their time and talent.

DURING THE YEAR 1947-48 the college chorus presented several programs. The first important program was the Christmas pageant combining the chorus, speech, and dance departments in a superb performance.

On March 29, the college chorus, along with the Miami Choral Club presented Cowen's "Rose Maiden" which was well received.

April 2, the chorus was host to 250 high schools at the annual choral festival. Mr. Kenneth Richards directed the concert held that night.

Back row: Herman Jantz, Dick Lykins, Jack Frisbie, Joe Quirk, David Bartlett, Bob Aubrey, Donald Capps, David Boyd, Tom Murphy, Paul Farley.

Center: Dayle Britt, Betty Sue Doty, Barbara Plake, Bettye Sue Baker, Dorothy Stroyick, Terrance James, Jess Adams, Paul Watt, William Beebe, Newman Gibbs, Harry Walker.

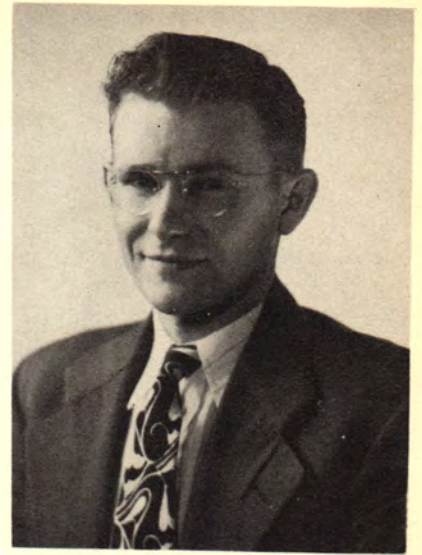
Front row: June McFerron, Frances Hale, Betty Bradford, Phyllis Keeton, Alice Powell, Naomi Smith, Mr. Richards, director; Harriett Dunn, pianist; Wanda Russell, Lula Witte, Ina Lou Haslett, Delphia Conner, Ruby Foster, Pat Barlow.

Not pictured: Virginia Bryan, Eugene Branson.



Department

THE COLLEGE BAND was formed the first semester under the leadership of John W. Elliott, instrumental music department head. Members of the band have played during the football and basketball games and on various occasions for assembly programs. Much interest was shown in the band this year and the benefits derived have been beneficial.



JACK LILBURN
President



First row: left to right: Walter Mitchell, Billye Sue Poynor, Lloyd Gibson, Wanda Kuns, Paul Wills, Jack Coats.

Second row, left to right: Ina Lou Haslett, Margie Cotter, Harry Walker, Willis Cunningham, Richard Wilson, Bob Aubrey, Paul Watt, Gene Branson, Beulah Edwards, J. K. Duncan, Elmo Johnston, Bob Lamm, Jack Frisbie, George Foust, Jerry Ruark.

Back row, left to right: John Elliott, director; Don Penrod, Fred Lamm, Buster VanHooser, Carl Stoops, and Wanda Russell.



"OUR TOWN"

by Thornton Wilder

DECEMBER 10, 1947

(Cast, in order of their appearance)

| | |
|-----------------------------|---------------------|
| STAGE MANAGER | Ted Tetrick |
| DR. GIBBS | C. R. Farley |
| JOE CROWELL | Charles York |
| HOWIE NEWSOME | Paul Reavis |
| MRS. GIBBS | Pat Murphy |
| MRS. WEBB | Dayle Britt |
| GEORGE GIBBS | Dick Lykins |
| REBECCA GIBBS | Veralee Vanhooser |
| WALLY WEBB | Walter Mitchell |
| EMILY WEBB | Nadine Zebert |
| PROFESSOR WILLARD | Joe Zodrow |
| MR. WEBB | Julius Hecksher |
| 1st WOMAN IN AUDIENCE | Rosemary Minson |
| MAN IN AUDITORIUM | Joe Griffiths |
| 2nd WOMAN IN AUDIENCE | Barbara Plake |
| SIMON STIMSON | Jerry Ruark |
| MRS. SOAMES | Lois Ewers |
| CONSTABLE WARREN | Wayburn Blankenship |
| SI CROWELL | Jess Adams |
| SAM CRAIG | Glenn Hunter |
| JOE STODDARD | Joe Zodrow |
| 1st DEAD WOMAN | Rosemary Grubb |
| 1st DEAD MAN | Joe Griffiths |

The entire play takes place in Grover's Corners, N. H.

ACT I—May 7, 1901—The Daily Life
 Act II—Three years later—Love and Marriage.
 Act III—Nine years later—Later Life.

| | |
|------------------|----------------|
| DIRECTOR | Ruth Arrington |
| BOOKHOLDER | Johnnie Gross |

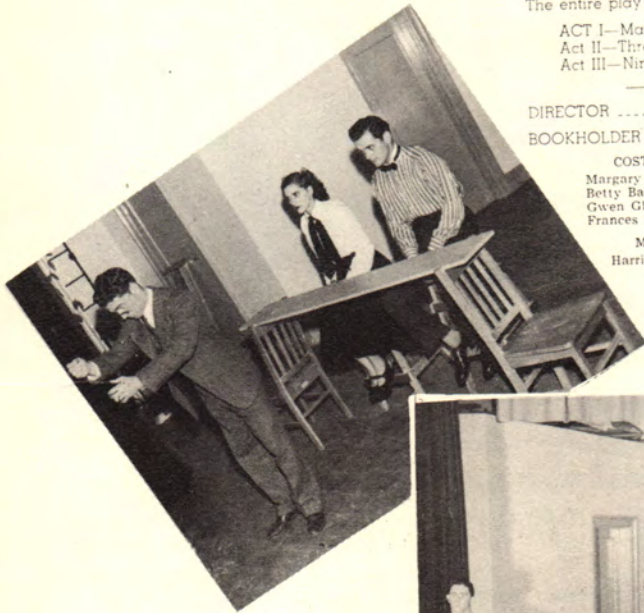
COSTUMES
 Margary Ann Rubin
 Betty Baker
 Gwen Gladden
 Frances Hale

MUSIC
 Harriet Dunn

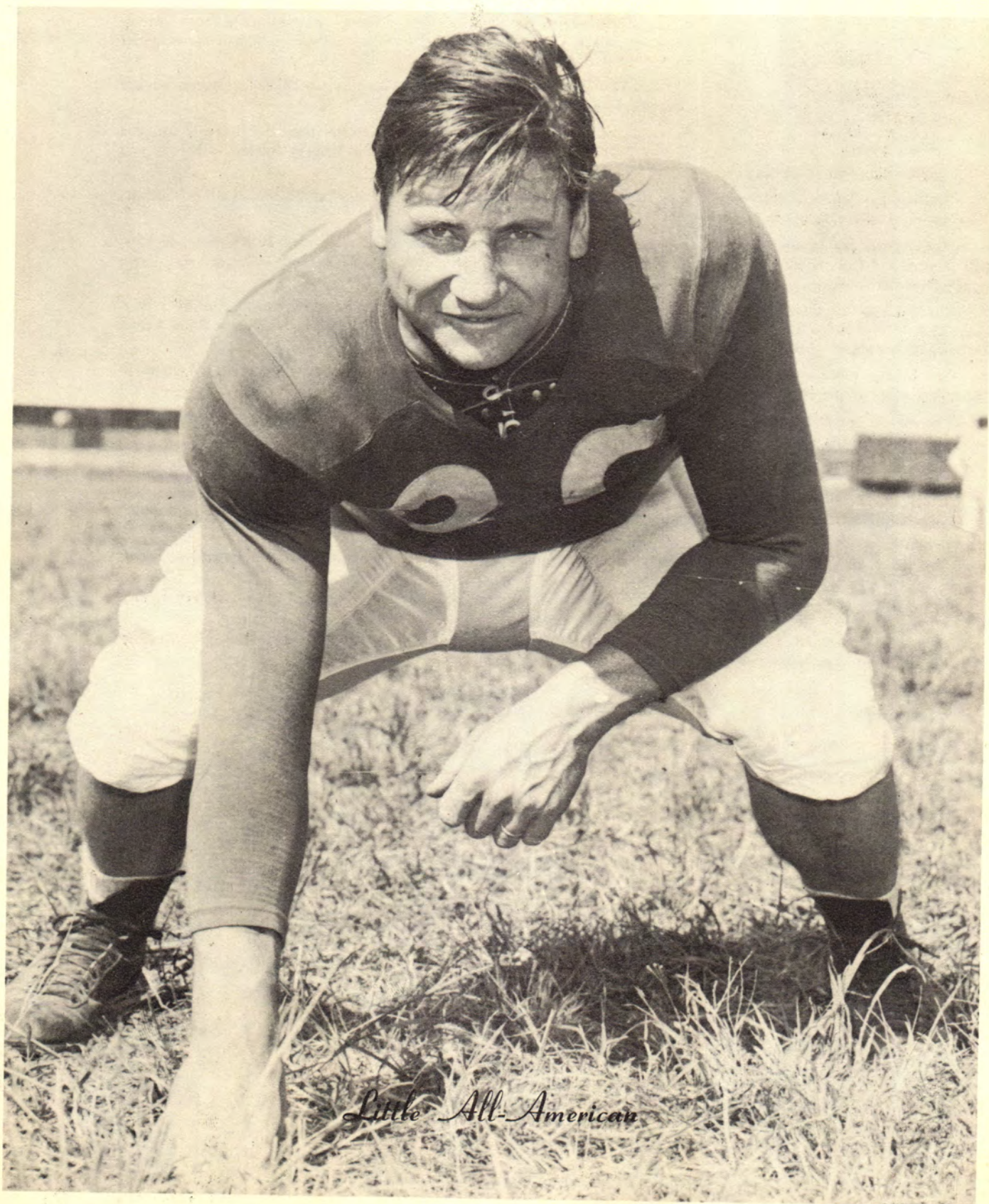
STAGE MEN
 Arnold Babst
 Joseph Budd

LIGHTS
 Nadine Zebert
 David Burr

WOODWORK
 Merrill Chane



Athletics



Little All-American



S. ALBERT (Coach)
ROBERTSON

—the junior high team?" Five plays later they scored. Now they know.

Performing before a shivering Homecoming crowd at Tonkawa, the Norse roped and branded a hard-fighting Northern Maverick team, 7-0.

Some of the blocking and tackling was shown by guard, Joe Robinson, Al Bagley and Bill Gailey, tackles, Bill Melton and Curt Griffin, not to mention "Punch" Trask. One of the finest defensive stands witnessed was shown by the Norse at Tonkawa.

The Vikings lost their first game to Connor Aggies at Warner. This game featured the running of Bill Watkins, Jack Meier, and a 20-yard stint by J. E. Landon; Buck Victor caught some unbelievable tosses from Frank Mobra and Watkins.

Our heartiest congratulations go to the football squad for a job well done in their defeat of the Wentworth Military Cadets at the Papoose Bowl in Oklahoma City, December 6.

The season ended with the Vikings as co-champions of the Conference with the Connor Aggies. At the annual football banquet each varsity player was presented a gold football.

The final curtain fell on the gridiron season. To one of the best teams ever to represent the college, we salute you and thank you for a wonderful season.

Back row, standing: Bill Smith, Max Coley, Paul Williams, Jack Meier, Kenneth Garrison, Dick Stratton, Tommy Hubbard.

Second row: Bob Thompson, Robert Collins, Bill Dodson, Bill Murdock, Floyd Jett, Curtis McLaughlin, Curtis Griffin, Al Bagley, Lindy Davis, Bill Melton, Bill Gailey.

Third row: Bill Vann, Jack Denton, Harold Wallace, J. E. Cook, Jack Wallace, Wayne Jackson, Dewey Lynch, Henry Matthews, Bill Rowden, Don Kinkead, Frank Mobra, Orville Lewis.

Front row: Max Buzzard, J. E. Landon, J. W. Brewington, Buck Victor, Bill Watkins, Bill Farbro, Marion Morgan, Joe Robinson, Leo King, Norvel Trask.

Football

THE NORSE, using a full veteran team, the single wing formation took charge for Miami against the Coffeyville Ravens. Thirty-eight Norsemen saw action in this game.

Capitalizing on breaks, the Vikings outweathered the Golden Gales of the Tulsa freshmen with a score of 26 to 13, before an estimated crowd of 2,500.

The Norse Vikings enjoyed a very hospitable event given by the college at O. C. W.

One of the funniest utterances was the time the T Team entered the Murray game; they were asked by a Murray Aggie, "Who are you





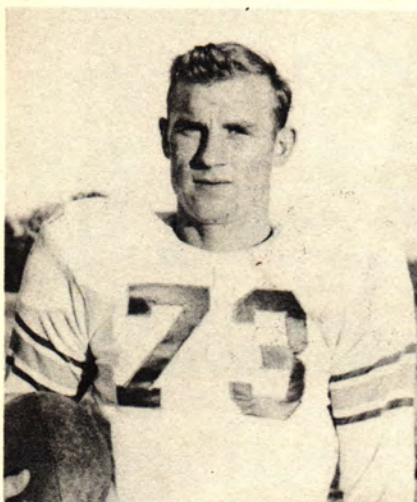
BUCK VICTOR
End



BILL MELTON
Tackle



MAX COLEY
Fullback



NORVEL (Punchy) TRASK
Center



CURTIS GRIFFIN
Tackle



PAUL WILLIAMS
End



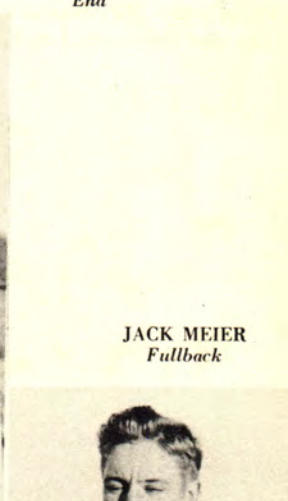
DON KINKEAD
End



HAROLD WALLACE
Halfback



BILL WATKINS
Halfback



JACK MEIER
Fullback



All Conference Members

Al Bagley was nominated by the coaches of the Junior College conference to the all-state team at his regular position of guard. The Norse placed three of their members on the second all-conference team and barely edged off the first eleven.





Single Wing Team

SCHEDULE

| | | | | |
|----------|----------|------------------|----|-------|
| Sept. 25 | Miami 13 | Coffeyville | 9 | There |
| Sept. 26 | Miami 26 | Tulsa | 13 | Here |
| Oct. 3 | Miami 12 | Connors | 14 | There |
| Oct. 10 | Miami 53 | Bacone | 6 | Here |
| Oct. 17 | Miami 7 | Little Rock | 31 | There |
| Oct. 25 | Miami 31 | Eastern Oklahoma | 7 | Here |



FRANK MOBRA
Halfback



JOE ROBINSON
Guard



J. E. LANDON
Halfback



MAX BUZZARD
Halfback



DEWEY LYNCH
Quarterback



CURT McLAUGHLIN
Tackle



ORVILLE LEWIS
Guard



KENNETH GARRISON
End



"J" Team

SCHEDULE

| | | | | | |
|----|-------|----|-----------|----|------------|
| 31 | Miami | 6 | Cameron | 27 | There |
| 7 | Miami | 31 | Northern | 7 | There |
| 14 | Miami | 18 | Murray | 6 | Here |
| 21 | Miami | 22 | O. M. A. | 0 | Here |
| 27 | Miami | 40 | Joplin | 0 | Here |
| 6 | Miami | 34 | Wentworth | 12 | Okla. City |



BILL VANN
Quarterback



H. K. MATTHEWS
Halfback



GLENN SECREST
End



BILL DODSON
Center



DICK STRATTON
End



WILLIAM FARBRO
Tackle



MARION MORGAN
Guard



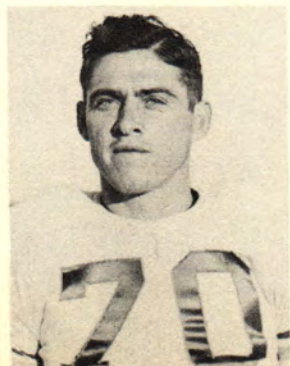
FLOYD JETT
Tackle



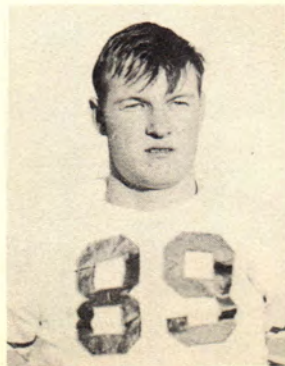
LEO KING
Quarterback



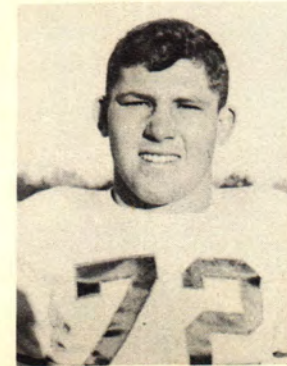
JACK DENTON
Halfback



BILL SMITH
End



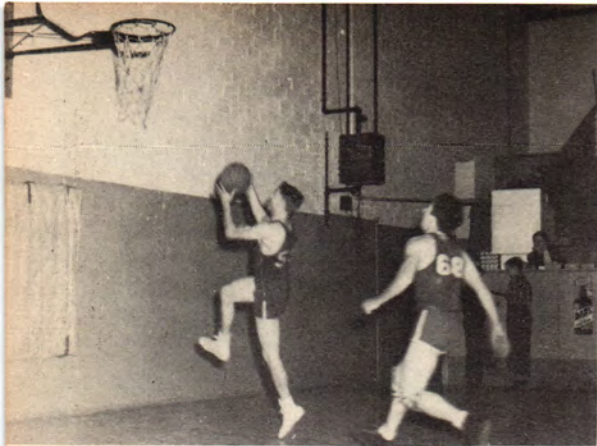
JACK WALLACE
Tackle



J. W. BREWINGTON
Guard



BOB THOMPSON
Fullback



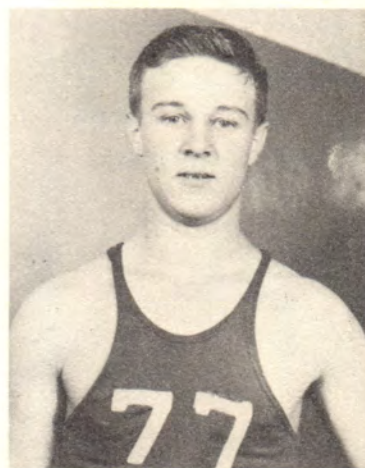
MAX COLEY
Guard



FRANK MOBRA
Guard



ARNOLD TAYLOR
Guard



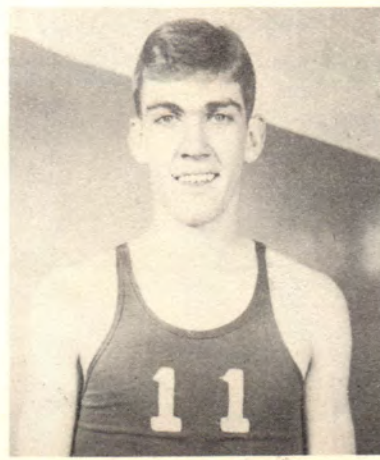
DON SIMPSON
Guard



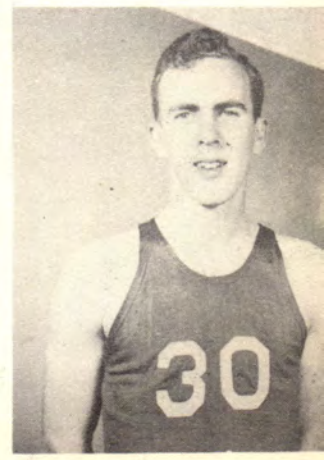
KENNETH GARRISON
Center



J. E. LANDON
Forward



DON KINHEAD
Forward



JACK HUDSPETH
Forward

1947 Basketball Schedule

| | | | | | |
|---------|----------------------|-----------|-------|----|-------|
| Dec. 9 | Parsons Jr. College | 38 | Miami | 37 | There |
| Dec. 15 | Coffeyville Jr. | 64 | Miami | 42 | There |
| Dec. 18 | Muskogee Jr. College | 30 | Miami | 38 | There |
| Jan. 6 | Okla. Military Acad. | 35 | Miami | 40 | Here |
| Jan. 8 | Northern Jr. College | 20 | Miami | 21 | Here |
| Jan. 9 | Northern Jr. College | 46 | Miami | 30 | Here |
| Jan. 15 | Eastern A. & M. | 20 | Miami | 21 | There |
| Jan. 16 | Eastern A. & M. | 32 | Miami | 46 | There |
| Jan. 20 | Parsons Jr. College | 32 | Miami | 35 | Here |
| Jan. 22 | Bacone College | Postponed | | | |

TRAVELING TO Parsons for the opener of the '47-'48 basketball season December 9, the Norse dropped a close one, 37-38, in the closing seconds of the game.

They failed to register in the win column December 15, when the Coffeyville Red Ravens trounced them, 64-42. The Norse suffered defeat when Coffeyville returned to Miami January 26, 48-39.

Before the Christmas Holidays the Vikings won over Muskogee, O. M. A., Eastern A. & M. (2) and Northern Junior College.

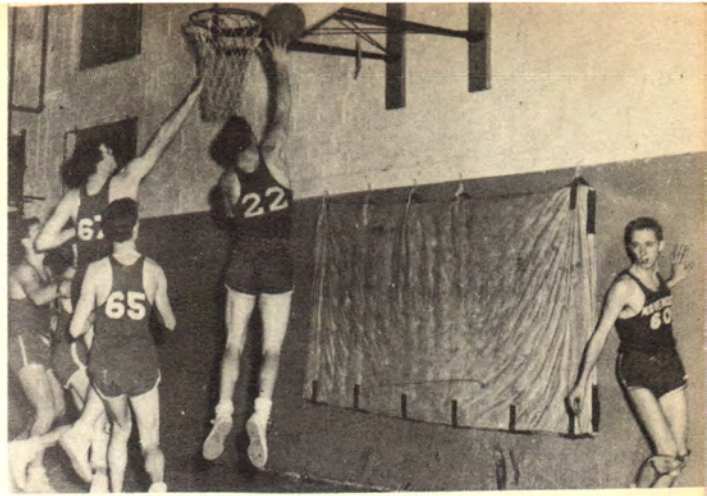
The Murray Aggies edged past the local Norsemen, 43-38, in a game played here, February 6. They again were given a setback in Tishomingo when the Murray Aggies defeated them, 39-28 on February 20.

February 10 the Connor Aggies of Warner handed the Norsemen their worst competition when they trimmed the Norsemen, 62-38.

1947 Basketball Schedule

| | | | | | |
|---------|----------------------|-----------|-------|----|-------|
| Jan. 26 | Coffeyville Jr. Col. | 48 | Miami | 39 | Here |
| Jan. 27 | Okla. Military Acad. | 25 | Miami | 35 | There |
| Feb. 3 | Muskogee Jr. College | 28 | Miami | 42 | Here |
| Feb. 6 | Murray A. & M. | 38 | Miami | 43 | Here |
| Feb. 10 | Connors A. & M. | 62 | Miami | 38 | Here |
| Feb. 17 | Bacone College | Postponed | | | |
| Feb. 20 | Murray A. & M. | 39 | Miami | 38 | There |
| Feb. 24 | Connors A. & M. | 42 | Miami | 30 | There |
| Feb. 26 | Cameron A. & M. | 55 | Miami | 40 | Here |
| Feb. 27 | Cameron A. & M. | 38 | Miami | 35 | Here |

Several of the players have shown very good ability in the handling of the ball and have developed an eye for the basket. May Coley has steadily improved with each game. "Goof" Garrison has shown aggressiveness without a doubt. J. E. Landon is the scoring ace of the club. The boys all have shown a spirit that we like to see in a team. At the completion of the game with the Murray Aggies the Norse had a total of nine wins and four losses. At the end of the season they had scored 10 wins and 10 losses. Basketball is and has proven a fine sport and the ability the boys have shown is evidence of the spirit in the college here at Miami.



GEORGE FOUST



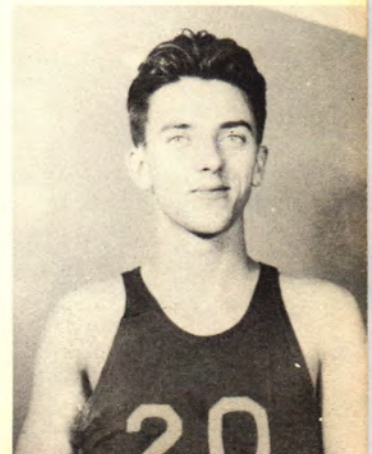
MARSHALL SMITH

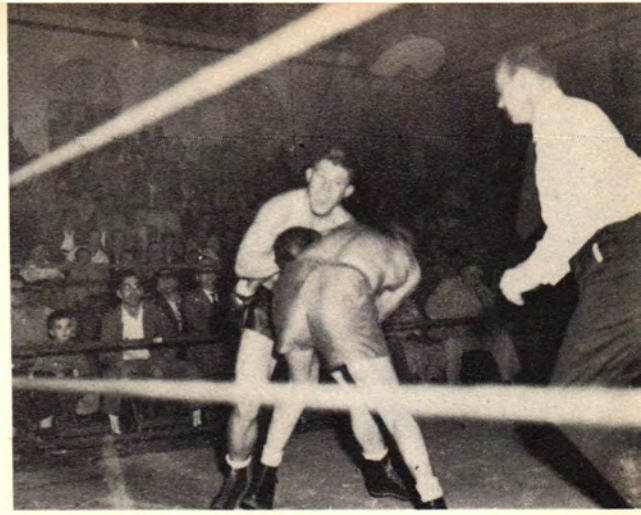


BILL SCHUELIN



ROBERT LEWIS





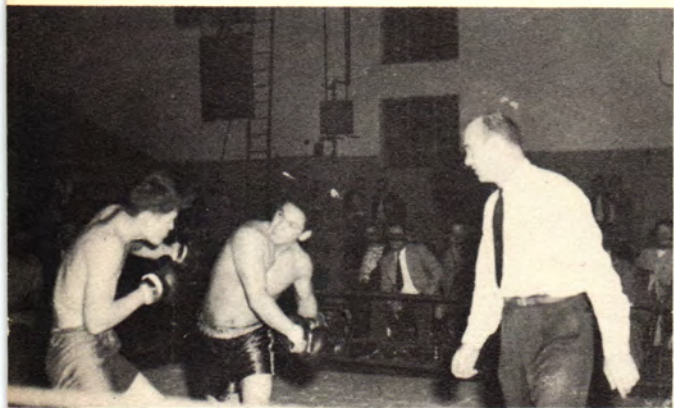
Boxing

THE BOXING SEASON opened with a novice tournament held in the college gym, December 9, 10, 11. Boxers from neighboring towns in the tri-state area competed for top honors.

A highlight of the season was the annual Miami Golden Gloves Boxing Tournament, January 12, 13, 15, also held in the Northeastern A. & M. College gym. The Norse squad took the championship.

Eight Northeastern boxers entered the district Golden Gloves championship at Tulsa bringing honors to the college.

The Norse boxing team traveled to various towns under the able direction of Mr. Jess Fronterhouse and gave evidence of the fighting spirit of Northeastern Oklahoma A. & M. College.



J. E. COOK



OWEN (PIDGEON) RILEY



J. W. BREWINGTON

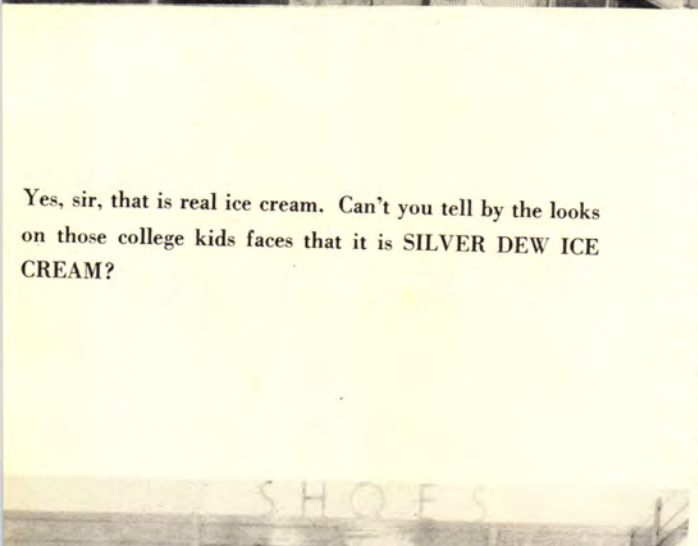


ROBERT WITCHER

One of these days you are going to be looking at rings as Boots and Ray are doing. DAWSON'S JEWELRY can help you select your Keepsake diamond and other fine jewelry.



The students out at Spartan Manor hang out at JOHN WILEY'S REXALL DRUG. It's a good place to meet the gang and have a soda.



Yes, sir, that is real ice cream. Can't you tell by the looks on those college kids faces that it is SILVER DEW ICE CREAM?



Ted and Joe know where to go when they need shoes. Charles, here at MILLNER-BERKEY'S R. E. S. SHOE COMPANY, has a pair of shoes for you.





At Dail West's MIAMI SALES GOODRICH store you can select any size of tire you may need. This store also has many other household and farm supplies.

Good ole' DOC'S BAR-B-Q! Many a happy moment has been spent down there with the crowd. Why don't you join the crowd?



You fellows and gals that are planning on setting up house-keeping should go over to SCOGGINS. They can help you.

One of Miami's most modern stores is where Charles and Glenn look for the latest suits. It's the HUB CLOTHING STORE.

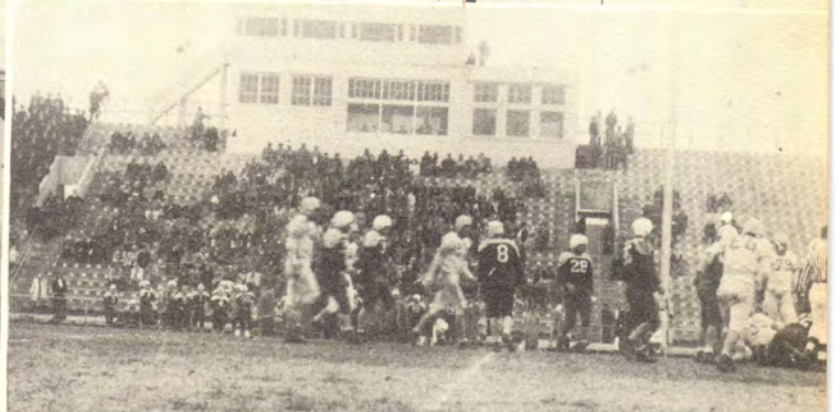


The sadness caused by the loss of a loved one in a family has been lightened many times by the fine service of the COOPER FUNERAL HOME.



Members of the Pep Club—Home Ec. boys dare to eat their own cooking—
The boys having a snack at Ben's—Papoose Bowl—Remember? Time out
—Sweetheart's Dance—Reams and Reams of it and still a long way to go.

The VIKING STAFF wishes to sincerely thank the advertisers in this section who have helped make possible a better annual. We hope all readers will keep these business establishments in mind.



PAPOOSE BOWL
Wentworth Military Academy
vs
Northeastern A & M College
TAFT STADIUM
SAT. DEC. 6 - 1947 - 2:00 P. M.
Reserve Seats \$2.00 Box Seats \$1.00 Student \$1.00
Full on Main Entrance to Northeastern High School Phone 2-8542 475 W. Main Okla. City



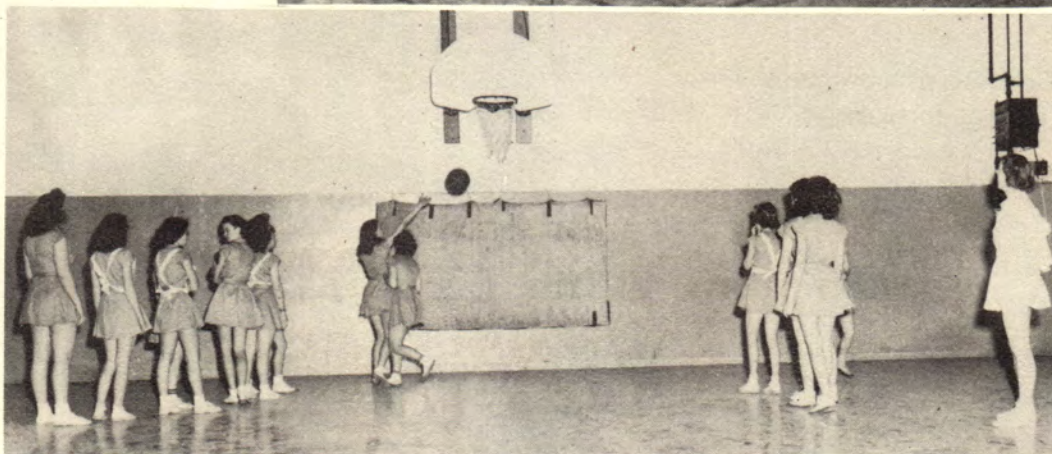
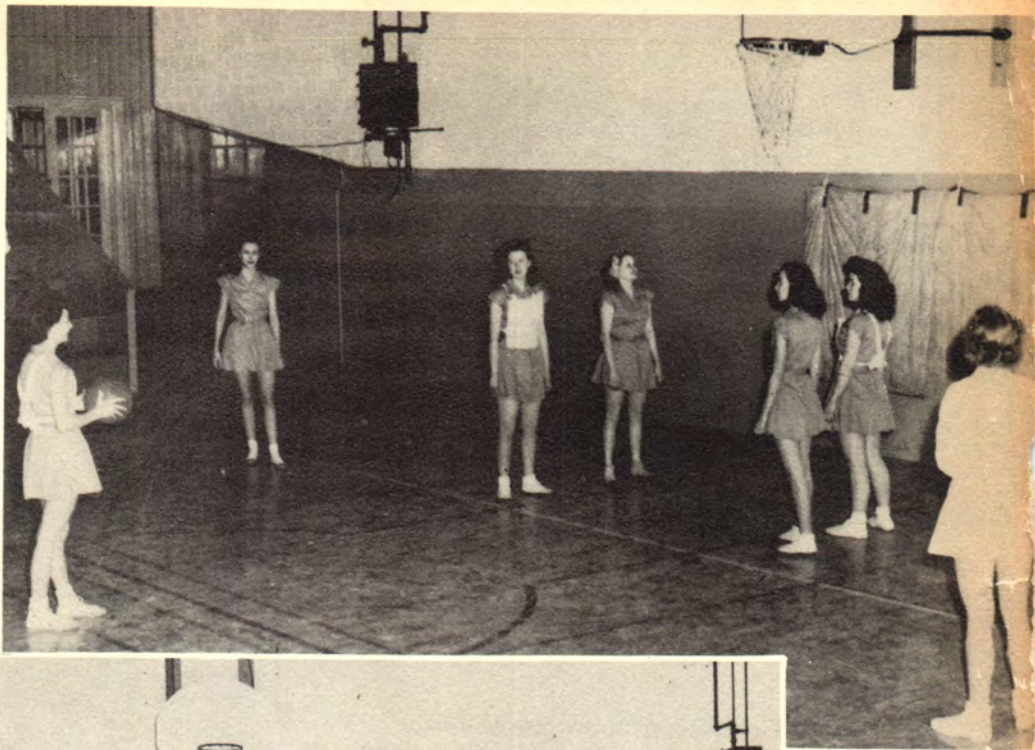
The End

*Remember this also, and be well persuaded of its truth:
the future is not in the hands of Fate, but in ours.*

—JULES JUSSERAND

Women's Physical Education

The Women's Health and Physical Education Department strives for a well-rounded program for the women students of Northeastern Oklahoma A. & M. College. The program includes deck tennis, volleyball, folk dancing, with the social dance element considered, basket ball, bowling, and badminton. Volleyball has been an interesting activity, resulting in a varsity team chosen to play against teams from surrounding institutions.



Standing: Leatha Lynch, Virginia Lynch, Ruby Foster, Mary Matlock, Virginia Bryan, Phyllis Graham, Ina Lou Haslett.

Seated: Wanda Kuns, Harriett Dunn, Mildred Gibson, Billye Sue Poynor, Lula Witte.

The health and physical education department has as their purpose the furthering of health, physical education, and recreation both for themselves and fellow students.



Out at the school there are some pretty sharp dressers. The kind of fellows that catch your eye. The B AND K CLOTHIERS can outfit you.

Talk about food! Everyone can tell you that nowhere is there a better place to get good food than at BEN STANLEY'S CAFE. *They don't fool you, they feed you!*



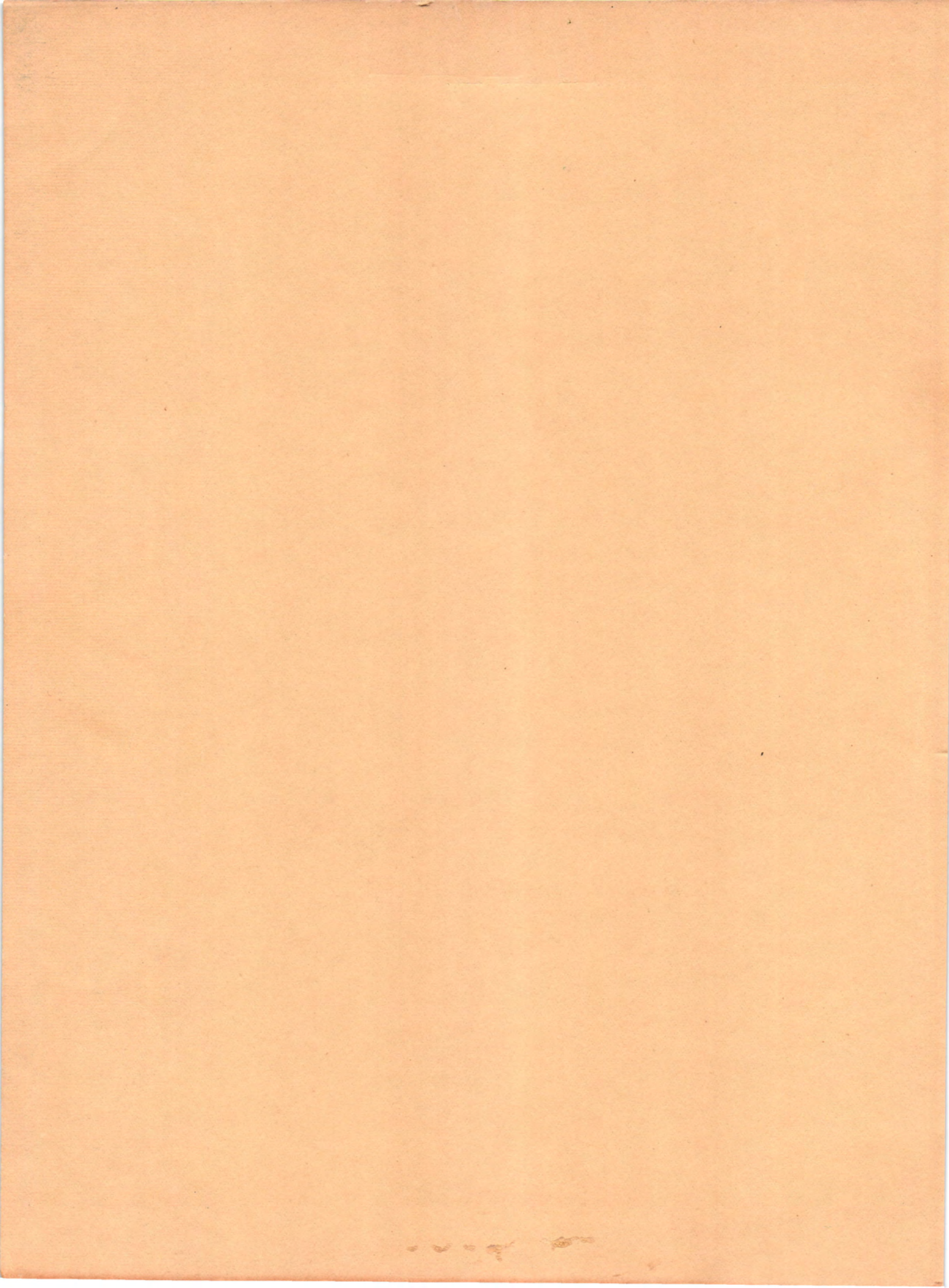
The store for college veterans and their wives to purchase the best foods is the COLLEGE GROCERY. Look at all the good things Gladys Smith is buying from the Cox's.

The guys and gals out at Northeastern A. & M. who always look the best send their suits and dresses to the MIAMI LAUNDRY AND DRY CLEANING.



Autographs

Autographs



378
V81
Cop. 2
1748



NEO A&M College Archive Collection



The Viking – the NEO A&M College Yearbook

Digital copies of The Viking, Northeastern Oklahoma A&M College's annual yearbook, are available in .pdf format on the NEO website for non-commercial purposes only. Scans were created using the best available editions; where stains, color-fading, and contributed marks (usually signatures) were visible on the original they also appear in the digital copy. The edge of some pages in oversized editions may be partially lost due to width limitations on the scanning bed. NEO yearbook editions that do not appear on the website are not part of the collection at present. If you would like to donate a yearbook, please contact the NEO Library.