

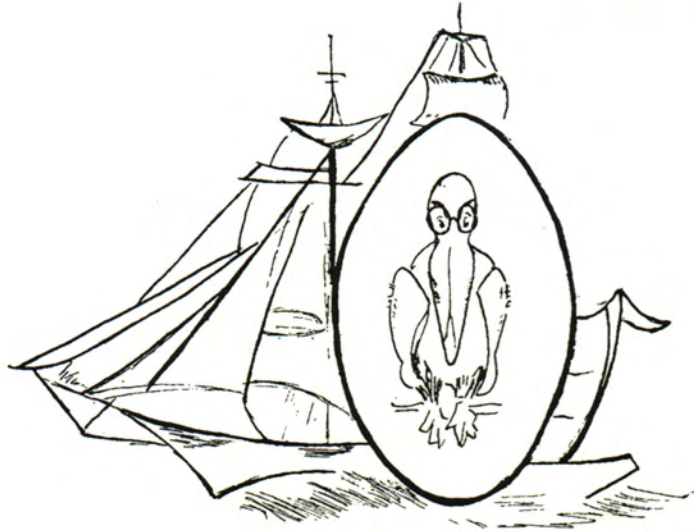
JAY VCCR



1935
OK 4j
1950
1952

378
OK4j
1930
Cop 2

4784



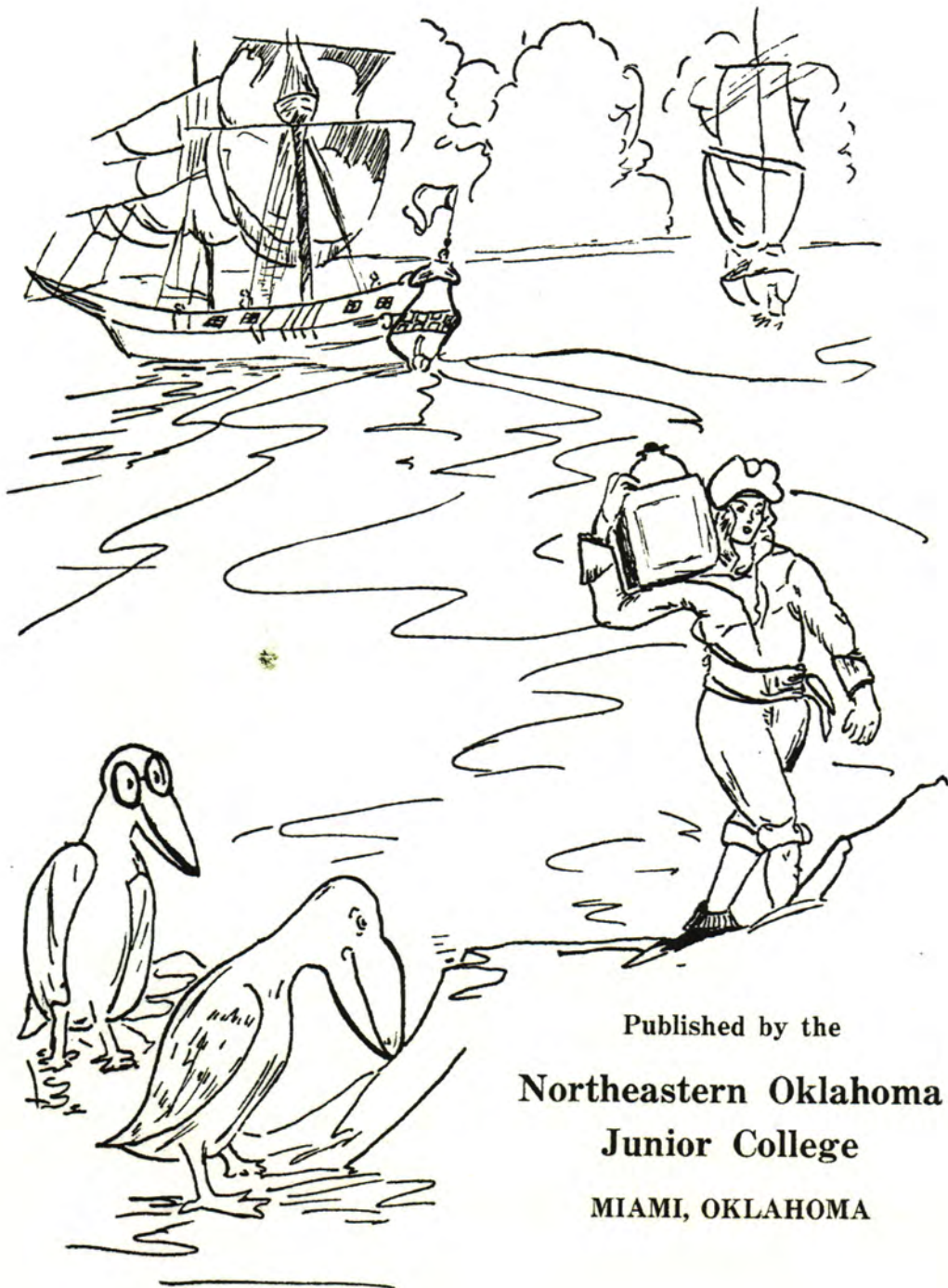
The Jayseer

OF 1930

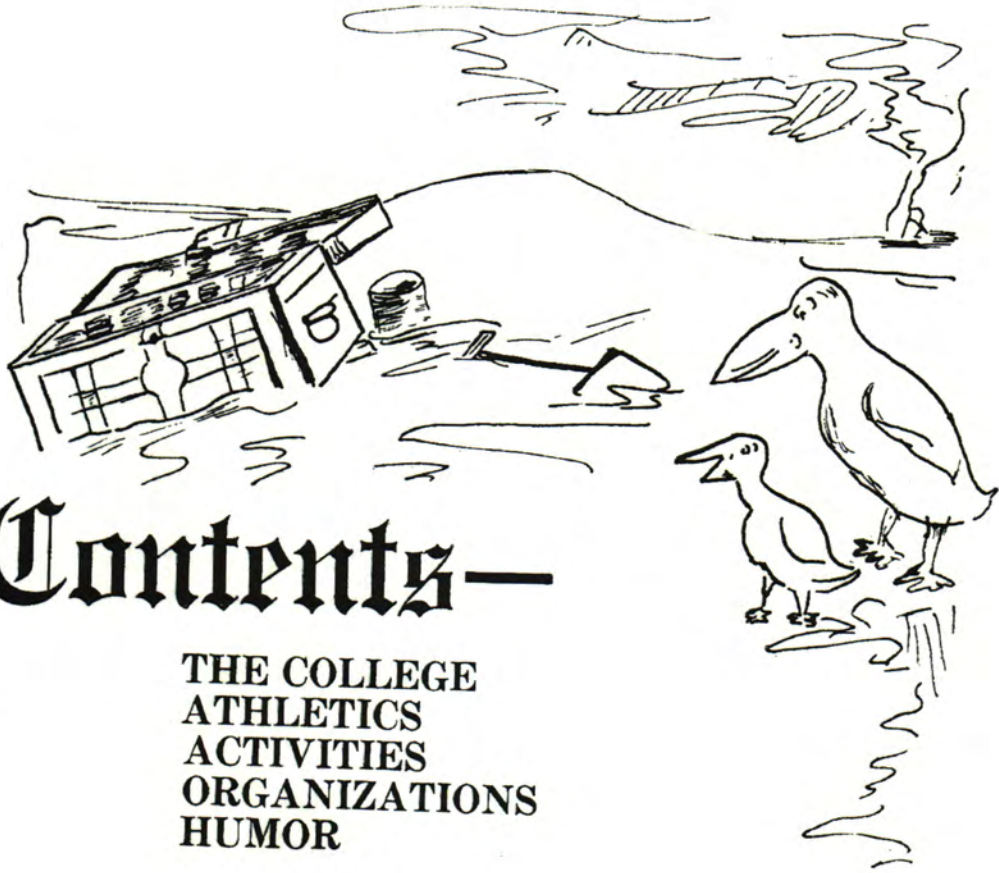


PAULINE GRUBB, Editor in Chief.
HAZEL RIDDLE, Business Manager.





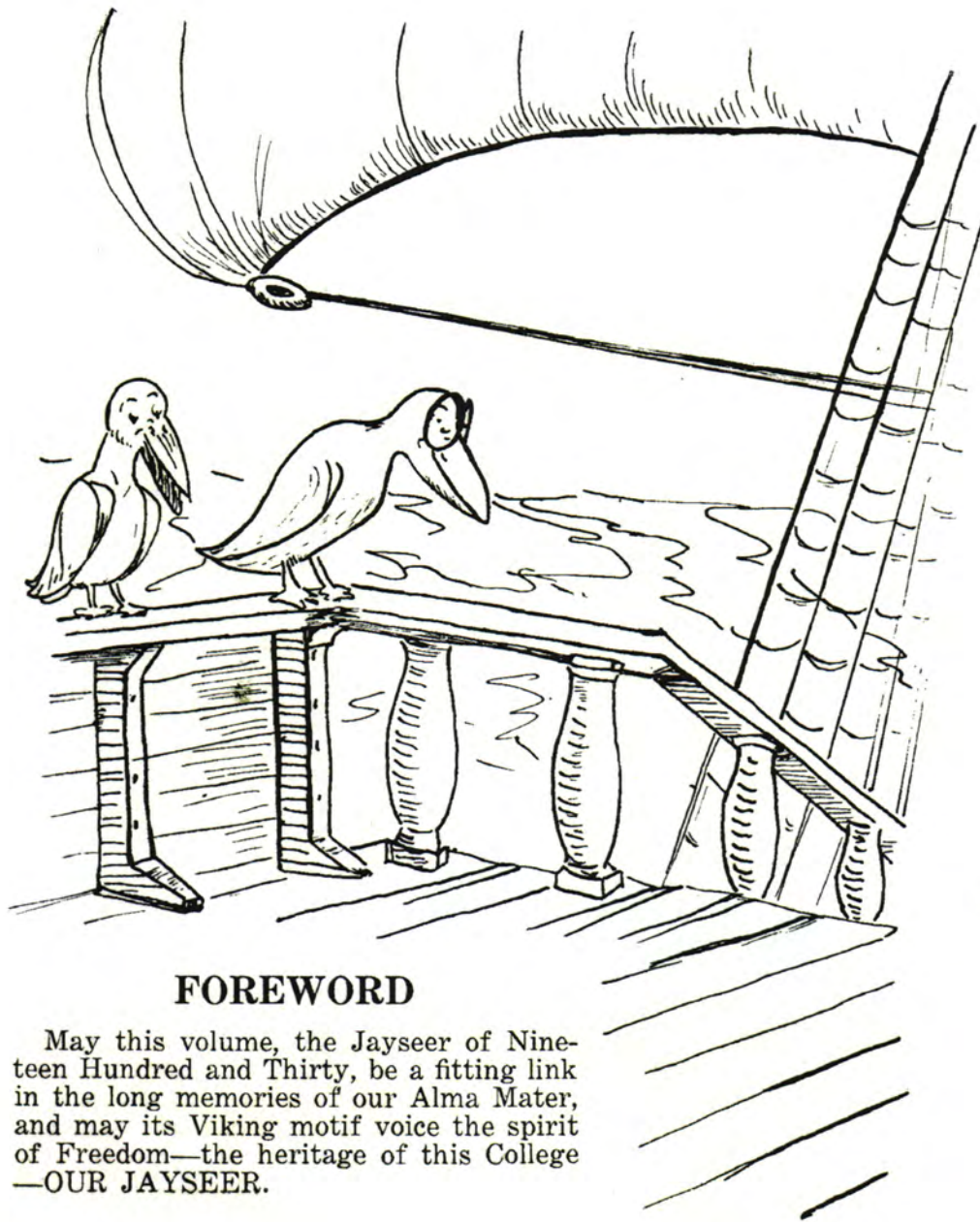
Published by the
**Northeastern Oklahoma
Junior College**
MIAMI, OKLAHOMA



Contents—

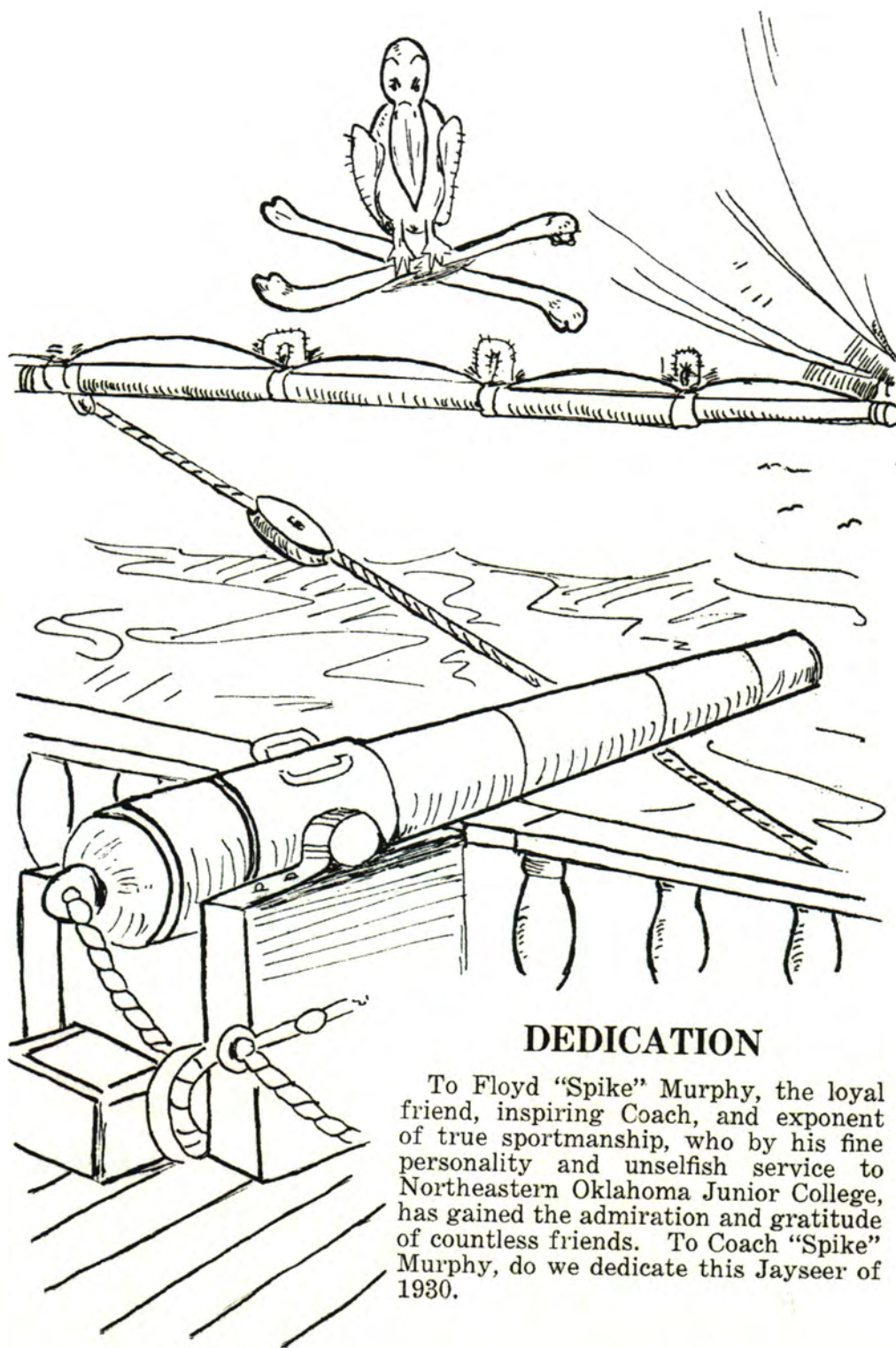
THE COLLEGE
ATHLETICS
ACTIVITIES
ORGANIZATIONS
HUMOR





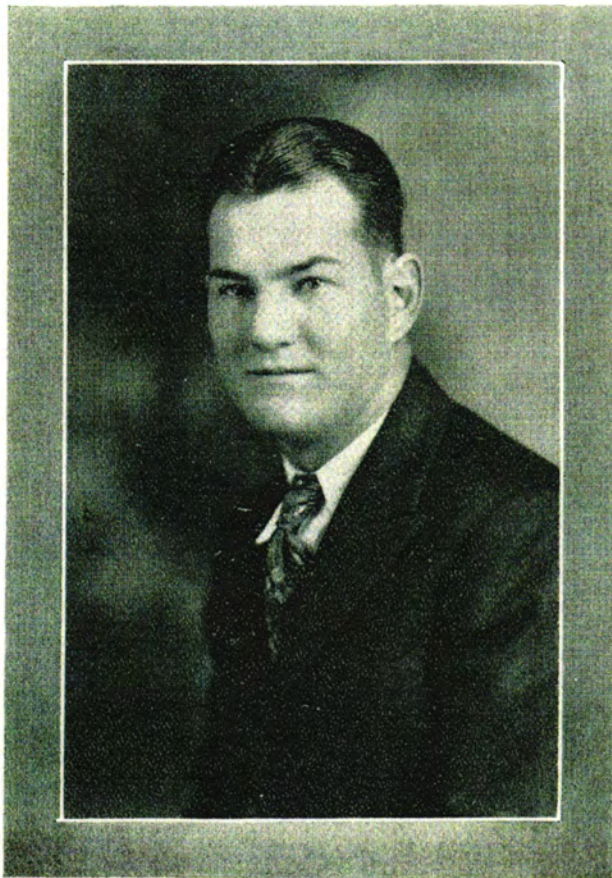
FOREWORD

May this volume, the Jayseer of Nineteen Hundred and Thirty, be a fitting link in the long memories of our Alma Mater, and may its Viking motif voice the spirit of Freedom—the heritage of this College—OUR JAYSEER.

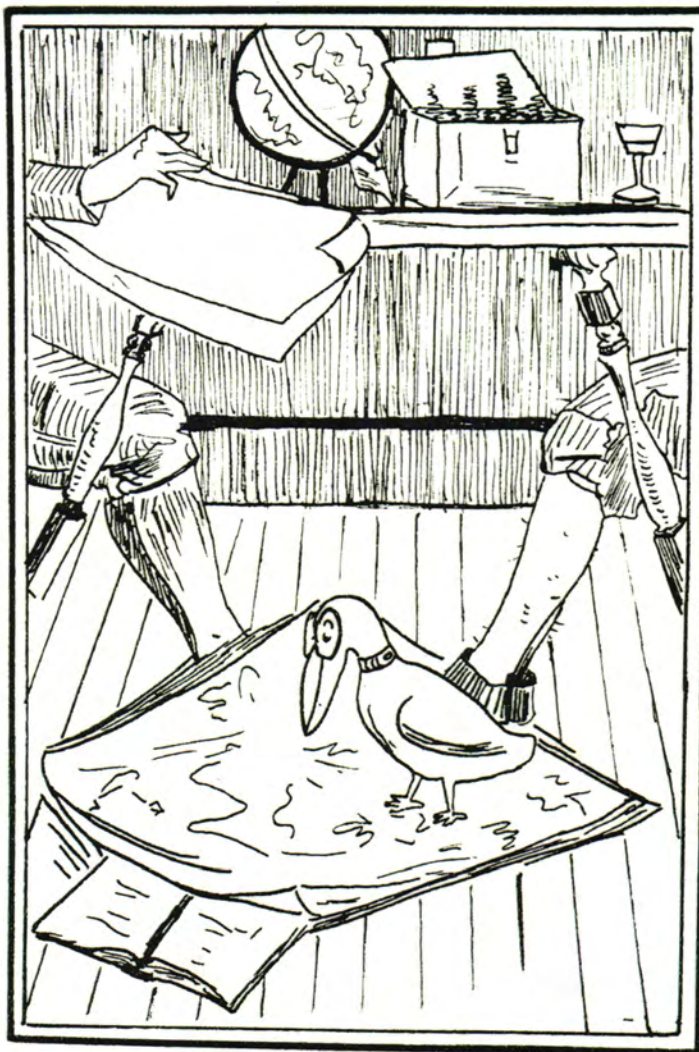


DEDICATION

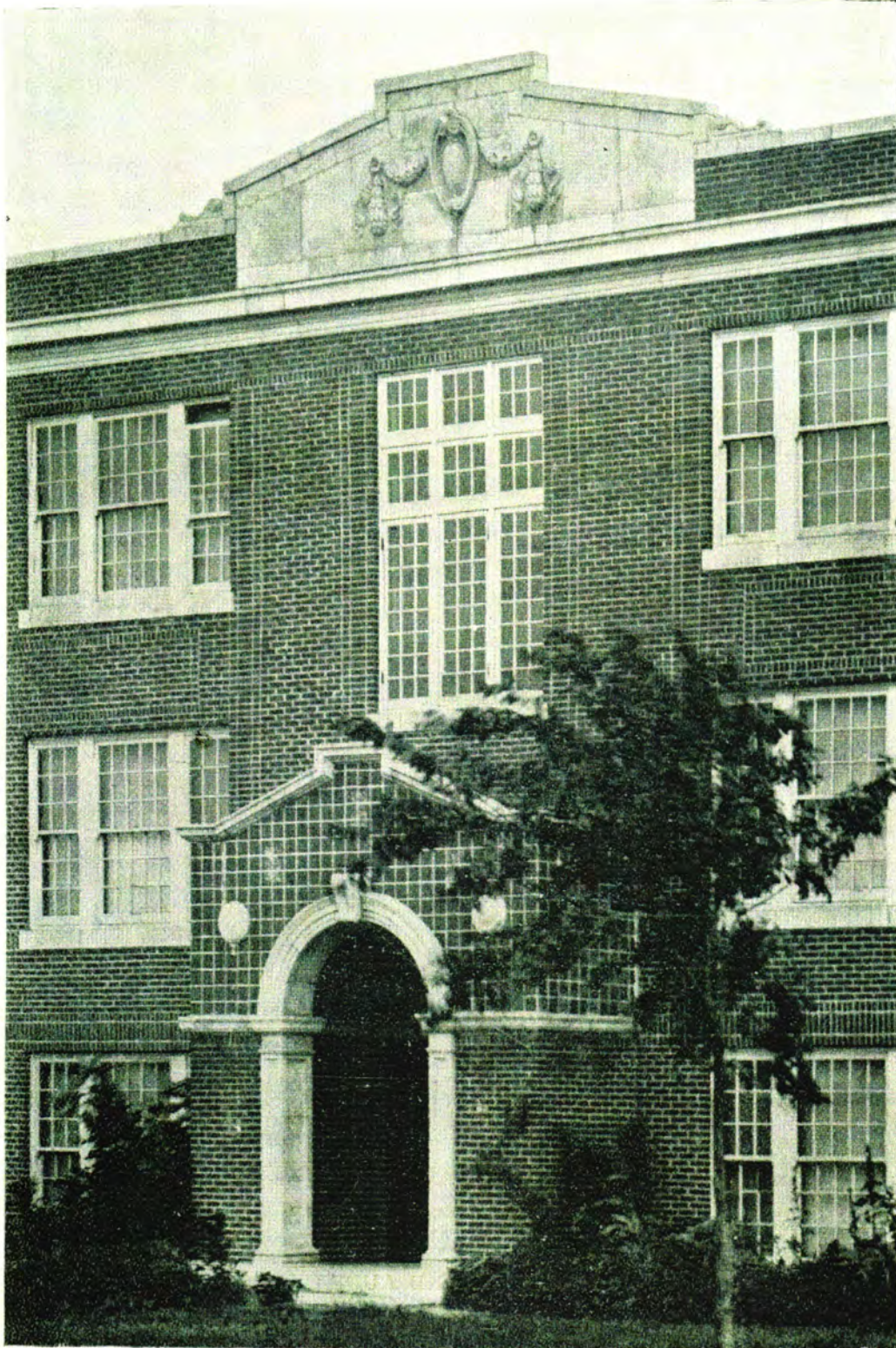
To Floyd "Spike" Murphy, the loyal friend, inspiring Coach, and exponent of true sportmanship, who by his fine personality and unselfish service to Northeastern Oklahoma Junior College, has gained the admiration and gratitude of countless friends. To Coach "Spike" Murphy, do we dedicate this Jayseer of 1930.



COACH (SPIKE) MURPHY



The College



ADMINISTRATION BUILDING



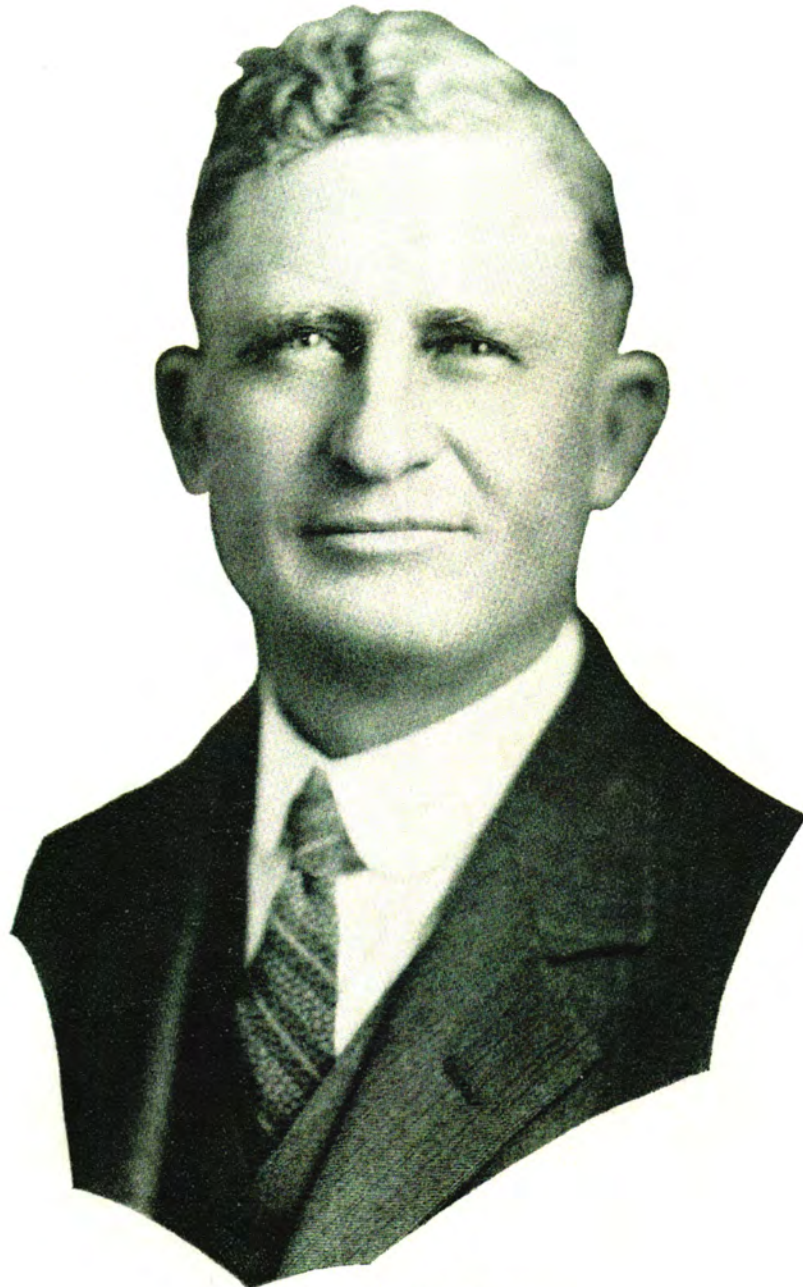
GYMNASIUM AND AUDITORIUM




Administration

BOARD OF REGENTS

JOHN VAUGHN President.....Oklahoma City, Okla.
W. M. MALONE, Vice-President.....Vinita, Okla.
SAM F. WILKINSON.....Nowata, Okla.
R. J. TUTHILL,, Secretary.....Miami, Okla.
W. D. GIBSON.....Grove, Okla.



M. R. FLOYD, President



To strive, to improve and to be worthy is to succeed. The goal is for him who is worthy. Education is but an aid to success and it only assists those who help themselves. The College is but a place for preparation. It offers the opportunity for growth and development to those who would attain. It can help but cannot do for those who will not do for themselves. It may be the best friend but it may eliminate the weak and the worthless. May our College do all within its power to encourage and to promote those who are sufficiently ambitious to strive, to prepare and to accomplish. May we help to make life better and brighter for students, teachers and friends that we may be counted worthy of the good-will and support of our State.

M. R. FLOYD.



L. B. DRAKE,
Dean of College

The present trend in education is toward specialization even more than it has been in the past. Professional courses which, a few years ago, were covered by two or three years of study have been lengthened to four, five and in some cases six years. This, I believe is the immediate cause for the Junior College. If the superstructure of the pyramid of education is to be built higher, it must needs be that the foundation shall be broader. The foundational courses should, however, themselves look toward the specialties which are to constitute the superstructure. So the Junior College of the future will, in my opinion, be a school of specialities and the young man or woman contemplating as professional or any specialized career will begin the study of the subject there. It is not enough merely to go to school to "get an education". I would urge every high school graduate to select his vocation as early in his Junior College life as possible.

L. B. DRAKE.



FACULTY

- Beulah Parker-----Instructor in Music
 Southwest Baptist College, Bolivar, Missouri; Cincinnati Conservatory of Music; University of Oklahoma; Northeastern Oklahoma Junior College, 1925.
- Virginia Jones-----Librarian
 Graduate Northeastern Oklahoma Junior College; Student in Library Work, University of Oklahoma; Northeastern Oklahoma Junior College, 1929.
- Henrietta Moore-----Instructor in History
 A. B., University of Arkansas; Graduate Student, University of Arkansas and University of Missouri; Northeastern Oklahoma Junior College, 1926.
- Clay DeFord-----Instructor in English
 Pd. B., State Teachers College, Warrensburg, Missouri; A. B., University of Oklahoma; A. M., University of Chicago; Northeastern Oklahoma Junior College, 1926.
- W. R. Parker-----Director of Orchestra
 Director of the 2nd Missouri Infantry Band, World War; Director the the 311th Cavalry Band, World War; Director of the 67th Field Artillery Band, World War; Director H.gh School and City Bands, Okmulgee, Oklahoma; Northeastern Oklahoma Junior College, 1925.
- William F. Dresia-----Instructor in Science
 Graduate Northeastern Oklahoma Junior College, 1925; B. S., University of Oklahoma, 1927; M. A., Leeland Stanford University, 1929; Northeastern Oklahoma Junior College, 1929-1930.



Faye Vann-----Instructor in French and Latin

A. B., A. M., University of Oklahoma; Principal Fairland High School, Fairland, Oklahoma; Instructor in Vinita High School, Vinita, Oklahoma; Northeastern Oklahoma Junior College, 1924.

Bessie Herrin-----Instructor in Spanish and Public Speaking

A. B., University of Oklahoma; A. M., University of Oklahoma; Graduate Work University of Mexico; Instructor in Spanish, Britton, Oklahoma; Principal Luther High School, Luther, Oklahoma; Northeastern Oklahoma Junior College, 1927.

Bertha Garlock-----Instructor in Home Economics

B. S., Oklahoma Agricultural and Mechanical College; M. S., Oklahoma Agricultural and Mechanical College; Head of Home Economics Department, Claredon College, Claredon, Texas; Arizona State Teachers College, Flagstaff, Arizona; Northeastern Oklahoma Junior College, 1927.

C. S. Whitney-----Instructor in Mathematics

A. B., A. M., University of Oklahoma; Teaching Fellow in Mathematics, University of Oklahoma; Superintendent of Schools, Kingston, Oklahoma; Instructor in Mathematics and Economics, Miami School of Mines; Instructor in Mathematics and Economics, Northeastern Oklahoma Junior College, 1924.

J. B. Steed-----Instructor in Education and Agriculture

B. S. in Education, University of Oklahoma; High School Principal, Superintendent of Schools in Oklahoma; Northeastern Oklahoma Junior College, 1924.

Floyd (Spike) Murphy----Instructor in Athletics and Assistant in Science

A. B., University of Tulsa; Athletic Director of Nowata High School, Nowata, Oklahoma, 1927-28; Athletic Director, Northeastern Oklahoma Junior College, 1928.

STUDENT COUNCIL

DON SANDMIRE, President
MAURICE CARSELOWEY, Vice President
RUTH CRICKARD, Secretary
HELEN GIBSON, Treasurer

MEMBERS

FRESHMEN

Helen Gibson
Irene Laffoon
Grandville Griffin
Don Sandmire

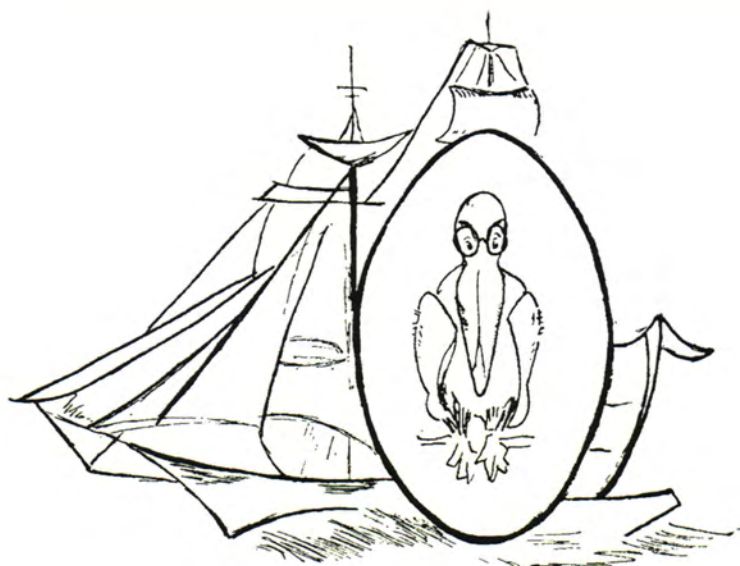
SOPHOMORES

Ruth Crickard
Pauline Grubb
William Kline
Maurice Carselowey


FACULTY MEMBERS

Dean L. B. Drake
Miss Henrietta Moore
Miss Bertha Garlock
Prof. C. S. Whitney





Sophomores



CHARLES CHESNUT, President
WAYNE CHAMBERS, Vice President
LILLIAN CLARRY, Secretary and Treasurer
CAROL MITCHELSON, Reporter

Carol Mitchelson,
Commerce, Oklahoma.

Eta Upsilon Gamma
Football Queen
Class Reporter
Y. W. C. A.



Charles Chesnut,
Commerce, Oklahoma.

Class President
L. D. B.
Football
Basketball
Track

Lillian Clarry,
Commerce, Oklahoma.

Eta Upsilon Gamma
Basketball Queen
Class Sec'y-Treas.
Annual Staff
Y. W. C. A.



Ila Grace McCracken,
Miami, Oklahoma.

Eta Upsilon Gamma
Pan-Hellenic
Annual Staff
Y. W. C. A.
Dramatic Club

Ingram Cleveland,
Miami, Oklahoma.



Beulah Cross,
Houston, Missouri.

Signa Iota Chi
Glee Club
Y. W. C. A.

Ruth Crickard,
Joplin, Missouri.

Eta Upsilon Gamma
Campus Queen
Pan-Hellenic President
Student Council
Y. W. C. A.



Wayne Chambers,
Commerce, Oklahoma.

L. D. B.
Football
Basketball
Track
Tennis
Class Vice President

William Kline,
Commerce, Oklahoma.

Iota Sigma Tau
Student Council
Debate
Phi Theta Kappa



Bea Austin,
Gravette, Arkansas.

Phi Theta Kappa
Y. W. C. A.
Dramatic Club

Jurene Watters,
Miami, Oklahoma.

Sigma Iota Chi
Annual Staff
Glee Club
Y. W. C. A.



Russell Renfrow,
Miami, Oklahoma.

Tennis

Maurice Carselowey,
Miami, Oklahoma.

Iota Sigma Tau
Student Council



Helen Lohmann,
Miami, Oklahoma.

Sigma Iota Chi
Pan-Hellenic
Annual Staff
Y. W. C. A.

Harold Rust,
Afton, Oklahoma.

Iota Sigma Tau



Don R. Ault,
Picher, Oklahoma.

Iota Sigma Tau

Lucille Williams Mayer,
Miami, Oklahoma.

Sigma Iota Chi
Glee Club



Albert Stewart,
Commerce, Oklahoma.

Everett Clarry,
Commerce, Oklahoma.

L. D. B.
Campus King
Football
Basketball
Track



Amanda Hutson,
Commerce, Oklahoma.

Phi Theta Kappa
Y. W. C. A.
Debate
Annual Staff

Hazel Riddle,
Miami, Oklahoma.

Eta Upsilon Gamma
Business Manager
Glee Club
Y. W. C. A.



Luther Wallen,
Miami, Oklahoma.

Dramatic Club
Band
Orchestra

Leonard Cox,
Commerce, Oklahoma.
Dramatic Club Pres.



Leota Linton,
Miami, Oklahoma.

Y. W. C. A.

Marion Goodin,
St. Louis, Mo.

Sigma Iota Chi
Glee Club
Y. W. C. A.



Edward Foster,
Miami, Oklahoma.

Iota Sigma Tau

Charles Grisham,
Hockerville, Oklahoma.

Phi Theta Kappa
Track



Mrs. J. B. Hampton,
Commerce, Oklahoma.

Phi Theta Kappa

Irene Pace,
Gravette, Arkansas.

Phi Theta Kappa
Players
Annual Staff
Y. W. C. A.



Leland Cotter,
Miami, Oklahoma.

Iota Sigma Tau
Players
Glee Club
Tennis

Pauline Grubb,
Miami, Oklahoma.

Phi Theta Kappa
Eta Upsilon Gamma
Editor-in-Chief
Sec'y.-Treas. Grand
Council Phi Theta
Kappa
Student Council
Dramatic Club

Miriam Ballard,
Miami, Oklahoma.

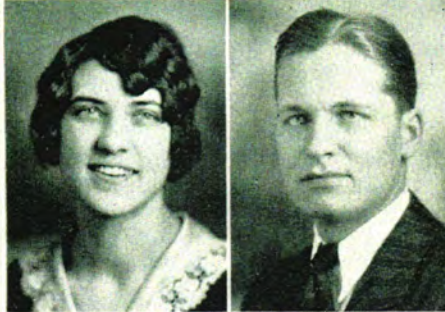
Eta Upsilon Gamma
Y. W. C. A.
Dramatic Club

Virginia Bissell,
Miami, Oklahoma.

Sigma Iota Chi
Y. W. C. A.
Glee Club
Pan-Hellenic
Orchestra

Monroe Ralston,
Miami, Oklahoma.

Lorena Botts,
Miami, Oklahoma.



Paul Sizemore,
McGehee, Arkansas.

Phi Theta Kappa
Iota Sigma Tau
Players
Tennis



Evelyn Story,
Miami, Oklahoma.

Y. W. C. A.



Dennis Beauchamp,
Grove, Oklahoma.

Iota Sigma Tau



Crystal Baird,
Picher, Oklahoma.

Phi Theta Kappa
Y. W. C. A.



Morris Tucker,
Afton, Oklahoma.

Phi Theta Kappa
Tennis

Maurice Carselowey,
Miami, Oklahoma.

Iota Sigma Tau
Vice President Student
Council



Irene Laffoon,
Miami, Oklahoma.

Sigma Iota Chi
Student Council



Walter Jenkins,
Miami, Oklahoma.

L. D. B.
Football
Basketball
Track



Irene Chenoweth,
Miami, Oklahoma.

Y. W. C. A.
Phi Theta Kappa



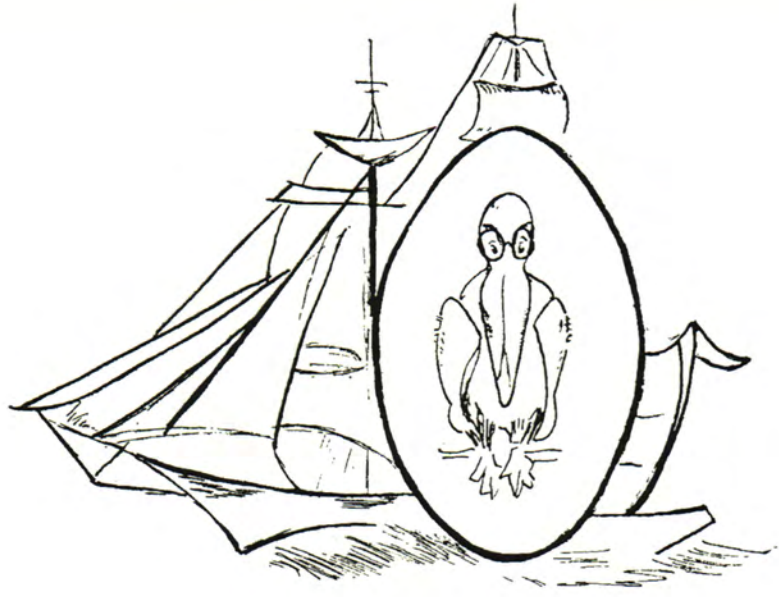
Walter Heaslet,
Miami, Oklahoma.

Iota Sigma Tau
Tennis




SOPHOMORE CLASS

Ault, Don R.	Hedges, Anona
Austin, Bea	Heaslet, Walter
Ballard, Miriam	Hutson, Amanda
Baird, Crystal	Jenkins, Walter
Bartlett, Dorothy	Kennedy, Rebecca
Beauchamp, Dennis	Kline, William
Bissell, Virginia	Linton, Leota
Botts, Lorena	Lohmann, Helen
Carselowey, Maurice	Myers, Lena
Chambers, Wayne	Mayer, Lucille
Chesnut, Charles	McCracken, Ila Grace
Clarry, Everett	McDonald, Doyle
Clarry, Lillian	Moberly, Aubrey
Chenoweth, Irene	Nelson, Joe Alta
Cotter, Leland	Osborn, Alice
Crow, Ethel	Pace, Irene
Crickard, Ruth	Prine, Pearl
Cross, Beulah	Ralston, Monroe
Cox, Leonard	Renfrow, Russell
DeMier, Thelma	Riddle, Hazel
Dunlap, Adrian	Rust, Harold
Ellis, Dick	Sizemore, Paul
Evans, Opal	Story, Eevelyn
Foster, Edward	Stewart, Albert
Frisbie, Bryan	Tipton, Georgia
Grubb, Pauline	Surine, Ella
Grisham, Charles	Tucker, Morris
Hampton, Cecelia	Watters, Jurene



Freshmen



JOHN STRECKER, President
ODIN SEAMSTER, Vice President
ELIZABETH BOWERS, Secretary and Treasurer

Tommy Crawford,
Miami, Oklahoma.

Tennis
Track
Basketball

Alma Jane Henderson,
Picher, Oklahoma.

Etta Lohmann,
Miami, Oklahoma.

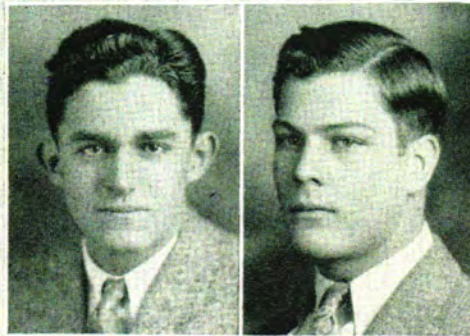
Glee Club
Phi Theta Kappa
Sigma Iota Chi

Josephine Nelson,
Miami, Oklahoma.

Glee Club

Francis Lloyd,
Miami, Oklahoma.

Glee Club



John Strecker,
Commerce, Oklahoma.

Class President
Dramatic Club
The Importance of Be-
ing Earnest
L. D. B.



Arlo Giles,
Vinita, Oklahoma.

L. D. B.
Football Captain-elect



Earledean Malone, Jr.,
Commerce, Oklahoma.

Glee Club
Tennis



Donald Sandmire,
Miami, Oklahoma.

President Student
Council
Annual Staff
Football
Track
Basketball
L. D. B.



John Mayer,
Miami, Oklahoma.

Virginia Cochrane,
Miami, Oklahoma.

Glee Club
Annual Staff
Sigma Iota Chi
Y. W. C. A.

Odin Seamster,
Miami, Oklahoma.

Debate Club

Lena Anders,
Picher, Oklahoma.

Bruce Ross,
Vinita, Oklahoma.

Orchestra
Glee Club
Football
Track
Iota Sigma Tau
Annual Staff

Emma Katherine
Walker,
Miami, Oklahoma.

Players
The Importance of Being Earnest



Bill Rodman,
Vinita, Oklahoma.

Glee Club
Orchestra
Players
Iota Sigma Tau
The Importance of Being Earnest
Band



Elizabeth Bowers,
Miami, Oklahoma.

Glee Club
Class Secretary
Sigma Iota Chi



Talbert Langford
Taylor, Jr.,
Miami, Oklahoma.

Band
Orchestra
Glee Club
Iota Sigma Tau



Edna White,
Miami, Oklahoma.

Annual Staff
Y. W. C. A.



Grandville Griffin,
Vinita, Oklahoma.

L. D. B.
Student Council
Football
Basketball
Track

Marshall Finch,
Miami, Oklahoma.

Glee Club
Iota Sigma Tau



Lucile Boyd,
Galena, Kansas

Y. W. C. A.



Lael Freeman,
Fairland, Oklahoma

Home Economics



Edward Price,
Miami, Oklahoma.

Iota Sigma Tau



Adda Mowry,
Picher, Oklahoma.

Y. W. C. A.
Phi Theta Kappa



Louise Jetter,
Miami, Oklahoma.



Monnie Thomas,
Wainwright, Oklahoma

Phi Theta Kappa



Ellsworth "Bud" Botts,
Miami, Oklahoma.

Glee Club
Iota Sigma Tau



Maxine Coulter,
Miami, Oklahoma.



Nellie Coates,
Galena, Kansas.

Y. W. C. A.
Phi Theta Kappa
Dramatic Club



Paul Mitchelson,
Commerce, Oklahoma.

Iota Sigma Tau
Track



Nadine Cherrington,
Vinita, Oklahoma.

Sigma Iota Chi
Y. W. C. A.
Dramatic Club



Helen Gibson,
Grove, Oklahoma.

Signa Iota Chi
Student Council
Annual Staff
Phi Theta Kappa
Glee Club
Y. W. C. A.



Herbert Kallmeyer,
Miami, Oklahoma.

Iota Sigma Tau
Tennis
Orchestra



Clarence Lord,
Miami, Oklahoma.



Lena Fay Kimberling
Miami, Oklahoma.

Glee Club
Y. W. C. A.
Players



Opal Fisher,
Afton, Oklahoma.



Ruby Fisher,
Afton, Oklahoma.



Alice Sandmire,
Miami, Oklahoma.

Glee Club
Y. W. C. A.



Lee Ray Rudkin,
Miami, Oklahoma.

Glee Club
Dramatic Club
Debate Club
Forensic
Orchestra



Ruth Hollis,
Fairland, Oklahoma.
Y. W. C. A.



Wayne Lair,
Commerce, Oklahoma.



Glenna Williams,
Miami, Oklahoma.



Bertha Tipton,
Picher, Oklahoma.



Hershel Beauchamp,
Grove, Oklahoma.



Mildred Wheat,
Miami, Oklahoma.



Glee Club
Players
Stunt Night

Jessie Weeks,
Miami, Oklahoma.

Players
Y. W. C. A.



Aubrey Moberly,
Afton, Oklahoma.



(Apologies from Editor)
Orchestra
Track

Audrey Parkinson,
Cardin, Oklahoma.

Y. W. C. A.
Annual Staff



Margaret Wilson,
Miami, Oklahoma.



Phi Theta Kappa
Y. W. C. A.

Tom Bell,
Welch, Oklahoma.

Band
Orchestra



Ellen O'Brien,
Commerce, Oklahoma.

Y. W. C. A.
Players

Myrtle Lee Young,
Miami, Oklahoma.

Y. W. C. A.
Sigma Iota Chi
Glee Club



LaVerne Morrison,
Welch, Oklahoma.

Orchestra
Band

Effie Reynolds,
Picher, Oklahoma.

Phi Theta Kappa



Ruth McIntyre,
Miami, Oklahoma.

Education

Joe Anderson,
Cardin, Oklahoma.

Orchestra
Band



Faye Meeks,
Vinita, Oklahoma.

Sigma Iota Chi
Y. W. C. A.
Dramatic Club

Anna Margaret Bastain,
Miami, Oklahoma.

Phi Theta Kappa
Glee Club
Players
Quartet



Marie Giyer,
North Miami, Oklahoma.

Phi Theta Kappa



Amie Mae Hoffman,
Miami, Oklahoma.

Sigma Iota Chi
Glee Club



George Windham,
Picher, Oklahoma.

Debate
L. D. B.
Football

Virginia Weaver,
Miami, Oklahoma.

Eta Upsilon Gamma
Phi Theta Kappa
Players
Debate
Y. W. C. A.



Ruth A. Phillips,
Gravette, Arkansas.

Phi Theta Kappa
Y. W. C. A.

Jake Lanning,
Miami, Oklahoma.

Tennis



Margaret Swayze,
Miami, Oklahoma.

Eta Upsilon Gamma

Carmen Sparlin,
Miami, Oklahoma.

Eta Upsilon Gamma
Glee Club



George Funderburk,
Vinita, Oklahoma.

L. D. B.
Football
Basketball
Track

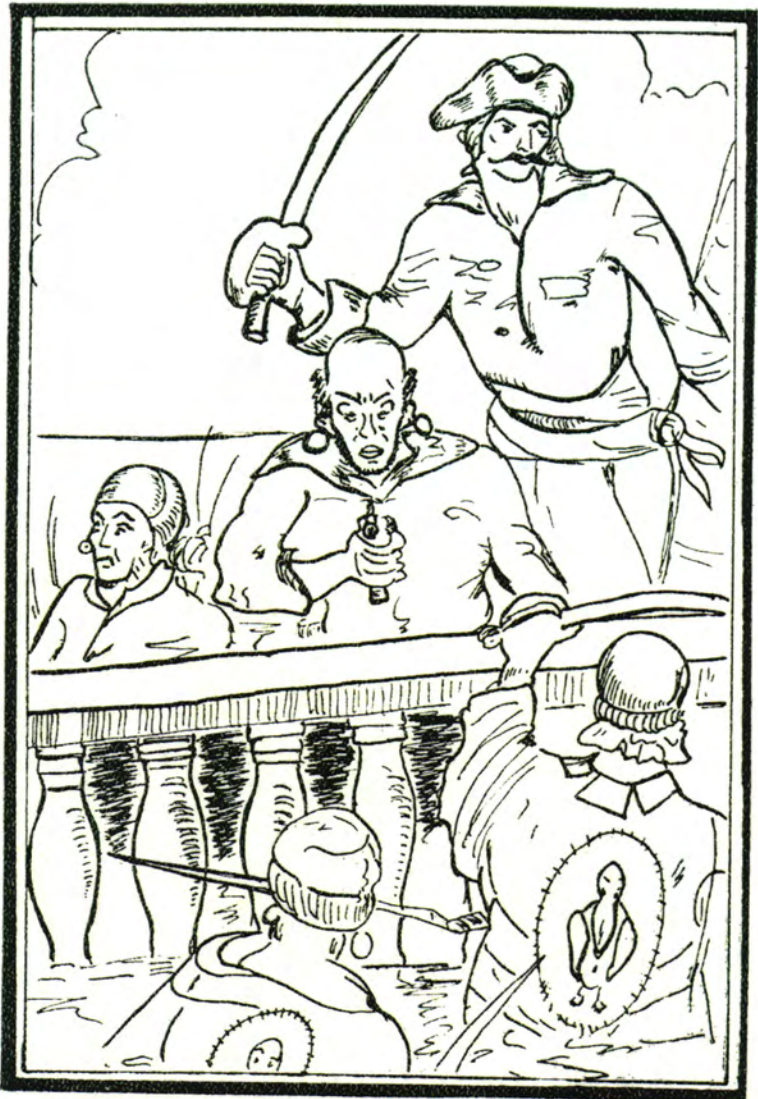
Allen Snyder,
Quapaw, Oklahoma.



Margaret Campbell,
Miami, Oklahoma.

CLASS ROLL

Anders, Lena	Hillegas, Joe	Reynolds, Effie
Anderson, Joe	Hoffman, Amie	Rue, Clemma
Bell, Tom	Hollis, Ruth	Rudkin, Lee Ray
Beauchamp, Herschel	Irwin, Hale	Rodman, Bill
Botts, Ellsworth	Jenkins, Myron	Ross, Bruce
Boyd, Lucille	Johnson, Orville	Ridenhour, Bruce
Bowers, Elizabeth	Jeter, Louise	Sapp, Hugh
Bastain, Anna Margaret	Joiner, Gladys	Sandmire, Alice
Breedlove, Lucille	Kallmeyer, Herbert	Sandmire, Donald
Cooper, Guy	Kimberling, Lena Faye	Settle, Ward
Coppock, Billy	Loyd, Francis	Streker, John
Chandler, Clayton	Lanning, Jake	Sibley, Mulford
Crawford, Thomas	Lord, Clarence	Seamster, Odin
Clabaugh, Raymond	Lair, Wayne	Snyder, Allen
Corrigan, Jack	Lohmann, Etta	Sparlin, Carmen
Coulter, Maxine	Laffoon, Irene	Swayze, Margaret
Cochrane, Virginia	Mayer, John	Taylor, Richard
Coates, Nellie	Miller, Dudley	Taylor, Talbert
Cherrington, Nadine	Mitchelson, Paul	Thomas, Monnie
Campbell, Margaret	Malone, Earldeen	Tipton, Bertha
Daley, Elmo	Morrison, LaVerne	Vincent, Edna
Finch, Marshall	Malocsay, John	Walker, Chauncey
Funderburk, George	Moore, Carl	Wood, Tobey
Freeman, Lael	Mowry, Adda	Windham, George
Farley, Geneva	Miller, Audra	Winfrey, Le Neva
Fisher, Opal	Meek, Faye	White, Edna
Fisher, Ruby	McIntyre, Mrs. Ruth	Walker, Emma Catherine
Griffin, Grandville	Neel, Bill	Weaver, Virginia
Giles, Arlo	Nance, Mickey	Williams, Glenna
Gilstrap, Ollie	Ott, Leonard	Wheat, Mildred
Gibson, Helen	O'Brien, Ellen	Wilson, Margaret
Goodin, Marian	Phebus, Maurice	Weeks, Jessie
Giyer, Marie	Price, Edward	Weeks, Lawrence
Harper, Gilbert	Passley, Shelby	Walker, Nola
Holt, Floyd	Painter, Gene	Young, Myrtle
Hall, William	Phillips, Ruth	
Henderson, Alma Jane	Parkinson, Audrey	



Athletics



CAROL MITCHELSON,
Football Queen.



1—Wayne Chambers, Captain, R. E. 2—Jack Corrigan, L. H. 3—Charles Chestnut, R. T. 4—Adrian Dunlap, Q. B. 5—Walter Jenkins, R. G. 6—Doyle McDonald, L. E. 7—Bruce Ross, R. H. B.

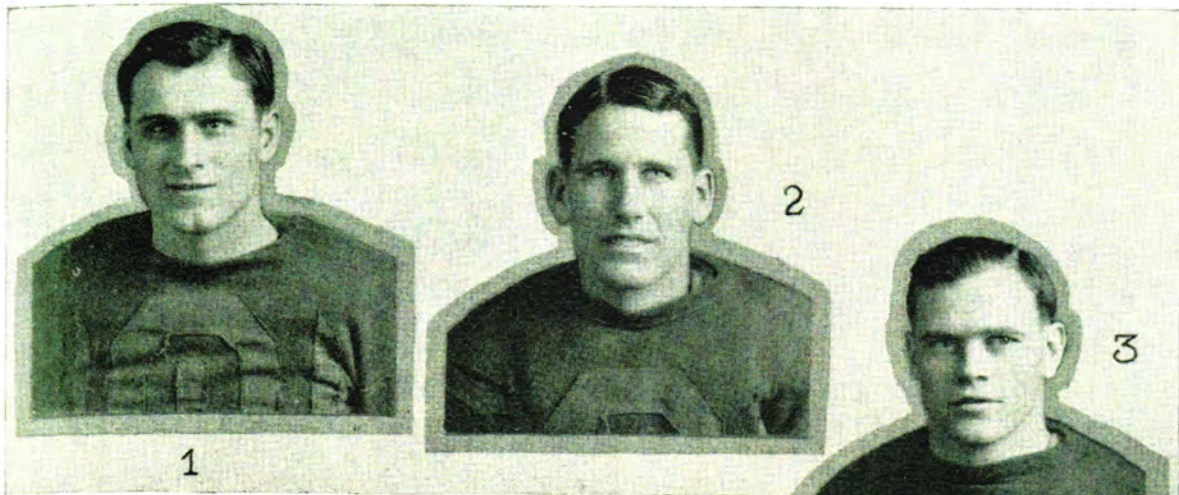


The curtain rang for the opening of "29" Football with an abundance of material from which Coach "Spike" Murphy turned out a team that suffered no losses during the regular playing season.

Towns contributing to the greatest of all Jay-seer football teams were Miami, Commerce, Nowata, Picher, Vinita, and Wyandotte.

The team had as a nucleus six of the lettermen from the excellent team turned out last year by Coach Murphy. In addition to these veterans, about twenty-four high school stars of Northeastern Oklahoma were out fighting for the posi-





1—Arlo Giles, Captain-Elect, L. T. 2—Maurice Phoebus, L. T. 3—George Windham, L. G. 4—Don Sandmire, F. B. 5—George Funderburk, R. E. 6—Grandville Griffin, L. G. 7—Everett Clarry, L. E.

tions left vacant by graduation. This new material was so good that many of the letter men were forced to extend themselves in order to keep their positions on the team.

During the days of hard practice that preceded the first game, it was evident to Coach Murphy that he had the material for the greatest teams ever turned out by the Junior College. The fellows were all more or less experienced and easy to work with, and these are two of the essentials of a good team.

The season opened with the Jayseers playing hosts to the Independence Junior College. There



was no doubt as to the relative strength of the two teams because the Independence Junior College is a new team on the annual calendar of the Jayseers.

The team Murphy started for this game averaged close to 175 pounds to the man. This is the heaviest and fastest team in Jayseer football history. Soon after the opening, it was in evidence that the end would see the score very much in favor of the Jayseers. Straight football was used almost wholly with the heavy Jayseer forward wall forming a veritable steam roller. All the backfield broke into this scoring melee which ended 34 to 0. This was the first of a long string of consecutive Jayseer victories.

The following week was spent in ironing out the rough spots that were evident in the first game. Coach Murphy also introduced several new plays during the week. Friday found the Jayseers facing the strong Parsons aggregation on the home field. The Jayseers had defeated Parsons in '28 and the visitors were "out for revenge". The first quarter was a punting duel with neither team gaining an advantage. The quarter ended 0 to 0. The break that won the game came late in the second quarter. Giles and Chestnut had been playing excellent football and after smothering the opponents offense on three straight attempts they rushed through and blocked a Parson's punt. Griffin, playing heads-up football, pounced upon the ball and with good interference crosses the goal for a touchdown. The half ended 6 to 0 for the Jayseers. Parsons came back strong in the third quarter but they could not penetrate the stone wall defense offered by the Jayseers and as the game progressed it turned into a punting duel again. Late in the last quarter the Jayseers opened a delayed offensive and marched down the field with line smashes, passes and fakes, but the game ended before the goal could be crossed, and the final score was Junior College 6, Parsons 0.

In this game the Jayseers seemed to have lost some of their spirit, and the week's practice before the Bolivar game was spent in getting back "the old fight". The day of the game loomed with the sky sending down a veritable down-pour. By game time the college gridiron was a sea of mud. Everything was dampened but the spirits of the Jayseers, who played like demons. Straight football was the type displayed, but even then the Junior College ran up a larger score on the boys from Bolivar than they had scored on them the remainder of the season. Giles, tackle and captain elect for the '30 Jayseers was out on account of injuries, but Phebus, his diminutive understudy, outdid himself, playing bang-up football all through the game. After the last sound of the referee's whistle an inventory was taken of the afternoon's incidents, and prominent among them was the fact that the Jayseers had skidded and slobbered to another victory. Score, Jayseers 39; Bolivar Baptists, 0.

After this victory the Jayseers hit their stride that remained with them for the remainder of the season. Not much hard practice was inflicted by "Spike" this week because several of the mainstays were injured. The afternoon designated for the fray with the Ozark Wesleyan Lions turned out to be the proverbial "ideal football weather". As the Lions are somewhat traditional enemies of the Jayseers, an interesting afternoon was forecast by spectators. As usual, "the customer is right". This game proved to be one of the most interesting of the entire season. The main features of this game were the terrific tackling of Chestnut, all state tackle, and the lone touchdown of the game made by Clarry, diminutive end. The Jayseers made another touchdown, but when Cor-

rigan took one of Dunlap's passes for 140 yards and a touchdown, but the 'ref' ruled that he stepped out of bounds. Because of this, the Jayseers had to be content with a victory of a lone touchdown.

All eyes then turned toward the next and most vital game on the Jayseer schedule. It was also the first conference game of the year. This game was with the Cadets of the Oklahoma Military Academy. Excitement rose to its highest pitch and when the squad entrained for the O. M. A. gridiron they were all drawn to a fine, fighting edge. They were also in excellent condition due to Coach Murphy's efforts. The followers of the Jayseers predicted that the Flying Cadets were in for a crash. This game proved itself to be one of the most spectacular and most bitterly fought ever played in Northeast Oklahoma. The first half was a see-saw affair with the Jayseers threatening to score twice, having the ball once on the Cadet's 8 yard line and again on the 10. Nervousness and fumbles cost the Junior College touchdowns, however. Another interesting thing noticed during this half was that four of the Jayseers were off the field due to injuries "legal or otherwise". The second half opened with a rush and the Cadets were on the defensive more than their allotted half the time. Then it happened! A Cadet end got more than away with a pass for a touchdown but should have not been completed. This only proved an added incentive to the Jayseers for on the following kickoff the Jayseers took the ball over the grade for a touchdown on straight, hard football. Nance kicked goal and as Mack did the same after the Cadet touchdown, the score was 7 to 7. This was also the score when the final whistle blew, and although the score was even it was a great moral victory for the Junior College. In this same game was introduced a triple pass play; Dunlap to Chambers to Nance that grew notorious for its ground gaining ability—having gained 102 yards in the O. M. A. game.

Still bruised and battered from their splendid efforts at Claremore the Jayseers journeyed to Muskogee and engaged the Bacone Indians in a second conference game which was won by the Junior College by a 12 to 0 count. The punting of Nance, Junior College quarterback and the fearless plunging and tackling of Wilson, Indian quarter, featured this game.

The next game, a conference affair, as was to be the next two, was played on Armistice Day with the East Oklahoma Junior College of Willburton. This was to be supposedly a very hard game as the Cadets had only beaten them 7 to 3 on a fluke in the last few seconds of play. They proved to be only an ordinary hurdle for the Jayseers who scored a 7 to 0 victory over them in an easy game. The Jayseers scored early and then seemed content to repulse the efforts of their opponents who never threatened seriously to score throughout the game and thus it ended with the above figures on the score card.

The following week-end turned out to be a trip to Warner, Oklahoma, for a game with the Connor Aggies. Not knowing what to expect as no dope was offered, the Jayseers started out in their best stride and soon tallied two touchdowns. The triple pass play was good for a 60 yard run and one of these counters. The rain which started in after this early scoring spree seemed to dampen the ardor of the Jayseers, for although the ball was constantly in Aggie territory they did not score again.

When home territory was again in sight attention was turned to the final game of the regular playing season. This was a game with the undefeated Mavericks of the University Preparatory School of Tonkawa

and also State champs in '28. This school boasted of a team averaging 200 pounds to the man, and "Spike", who had gone to see the tie game played between U. P. S. and O. M. A. reported that in taking a picture of the Maverick team it had to be taken in sections. This had no effect on the Jayseers who trained harder than ever and when time came for the Thanksgiving Day fracas the team was again in perfect condition, the first time since the game with O. M. A. Things began to happen soon after the opening whistle and before the Mavericks could get together the Jayseers had chalked up the first seven points of this afternoon's score. The Mavericks evened things up in the second quarter when they scored on a pass. So the half ended. Coach Murphy soon restored fighting spirit and soon after the start of the second half Captain Chambers took one of Dunlap's long passes for a touchdown. Nance kicked goal. Shortly after in the last period, Nance returned a punt 60 yards for a touchdown on one of the most spectacular runs ever seen on the Maverick gridiron. He also kicked goal as on the previous attempts. By this time the Mavericks were completely demoralized and the Jayseers were headed for another touchdown as the whistle blew, ending the best game ever played by a Jayseer team. Score, 21 to 7. Joy was in every Junior College heart for in a way the Cadets had been defeated in this game as they had only been able to get a tie from the Mavericks the week before.

This victory left three teams in a tie for the Championship of Oklahoma; the Jayseers, of Northeastern, Miami; the Cadets, of Claremore, and the Cameron Aggies at Lawton. As the Aggies had a record of five conference victories and no ties it was chosen for the Jayseers and the Cadets to play for the honor of meeting Cameron for the State championship. The game was to be played on the Jayseer gridiron. Tickets to the game were sold out long before the day of the game arrived, but with the arrival of this day came the blasting of Jayseer hopes of a championship eleven. An ideal day was granted for the game and the largest crowd ever to witness any athletic contest in Northeastern Oklahoma also turned out. From the first it was evident that the Jayseers were badly off-form and in playing their worst brand of ball of the year were defeated 13 to 7. The supporters of the Jayseers did not feel bad about this up-set as they were aware of the strenuous schedule with which the Jayseers had to go through. Thus in reading the events enunciated above, you can get an idea of the football season of '29 at the Junior College and the greatest thus far in the history of the school.

THE SEASON'S SCORE

Jayseers, 34	Independence, 0.
Jayseers, 6	Parsons, 0.
Jayseers, 39	Bolivar, 0.
Jayseers, 6	Ozark Wesleyan, 0.
Jayseers, 7	O. M. A., 7.
Jayseers, 13	Bacone, 0.
Jayseers, 7	E. Okla. Junior College, 0.
Jayseers, 12	Connor Aggies, 0.
Jayseers, 21	U. P. S., 13.
Post Season Game.	
Jayseers, 7	O. M. A., 13.



LILLIAN CLARRY,
Basketball Queen



BASKETBALL

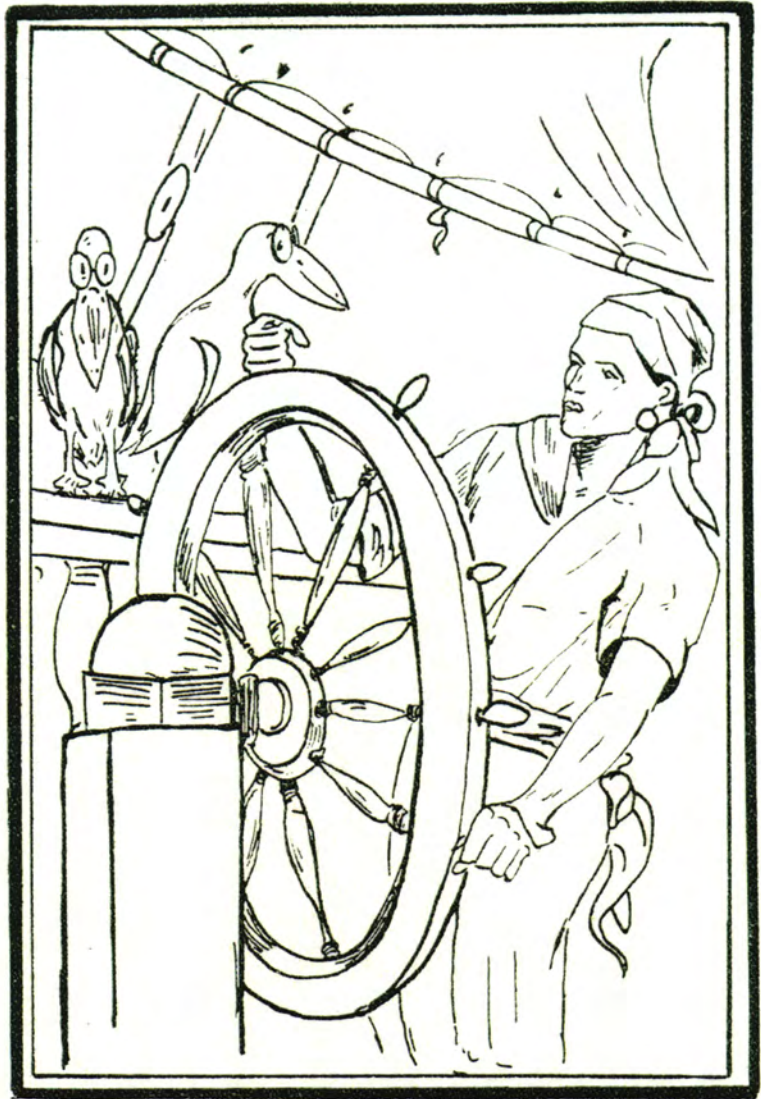
The Basketball season of 1929-30 was a very bewildering affair. An abundance of first year material was available as well as five lettermen. Yet, although as many points were scored by the Jayseers as were scored against them, they were beaten consistently.

It was agreed by everyone, however, that the weakness in the team lay in the fact that no regular place could be had for practice. In every game the Jayseers would get an abundance of shots but could not make them tally. This was because of inadequate practice, and if regular practice is not had the players cannot get down their "eye" for the basket.

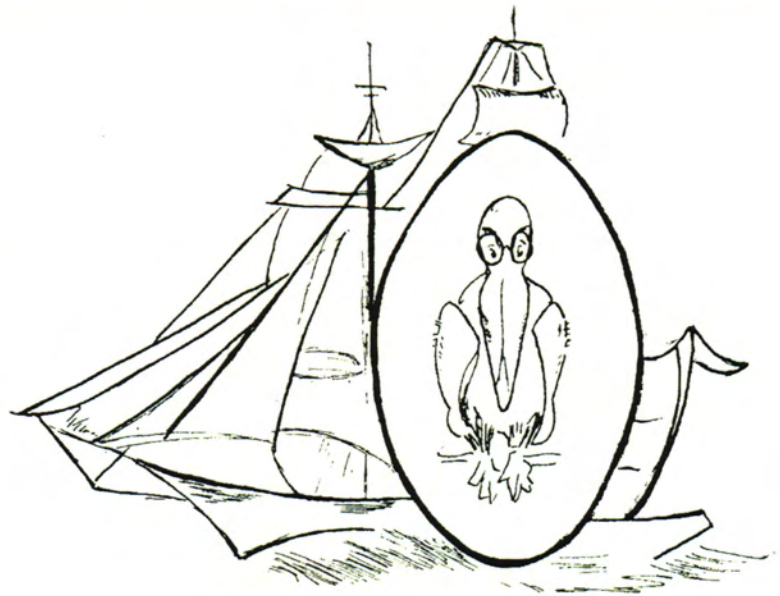
So much for alibis. Now with the new Gym almost completed, which is to be the best in the northeastern part of the state, the Jayseers will make their place on the basketball map.

SCHEDULE

Jayseers, 37	-----	Barnsdall B Squares, 18
Jayseers, 31	-----	Joplin DeMolays, 24
Jayseers, 29	-----	Cordell Christians, 35
Jayseers, 18	-----	Cordell Christians, 19
Jayseers, 53	-----	Cameron Aggies, 75
Jayseers, 24	-----	Cameron Aggies, 41
Jayseers, 49	-----	Ozark Wesleyan, 48
Jayseers, 39	-----	U. P. S., 19
Jayseers, 21	-----	U. P. S., 22
Jayseers, 37	-----	Ozark Wesleyan, 43
Jayseers, 54	-----	Bolivar Baptists, 55
Jayseers, 34	-----	Bolivar Baptists, 35
Jayseers, 26	-----	Independence J. C., 32
Jayseers, 23	-----	Connor Aggies, 49
Jayseers, 28	-----	Connor Aggies, 33



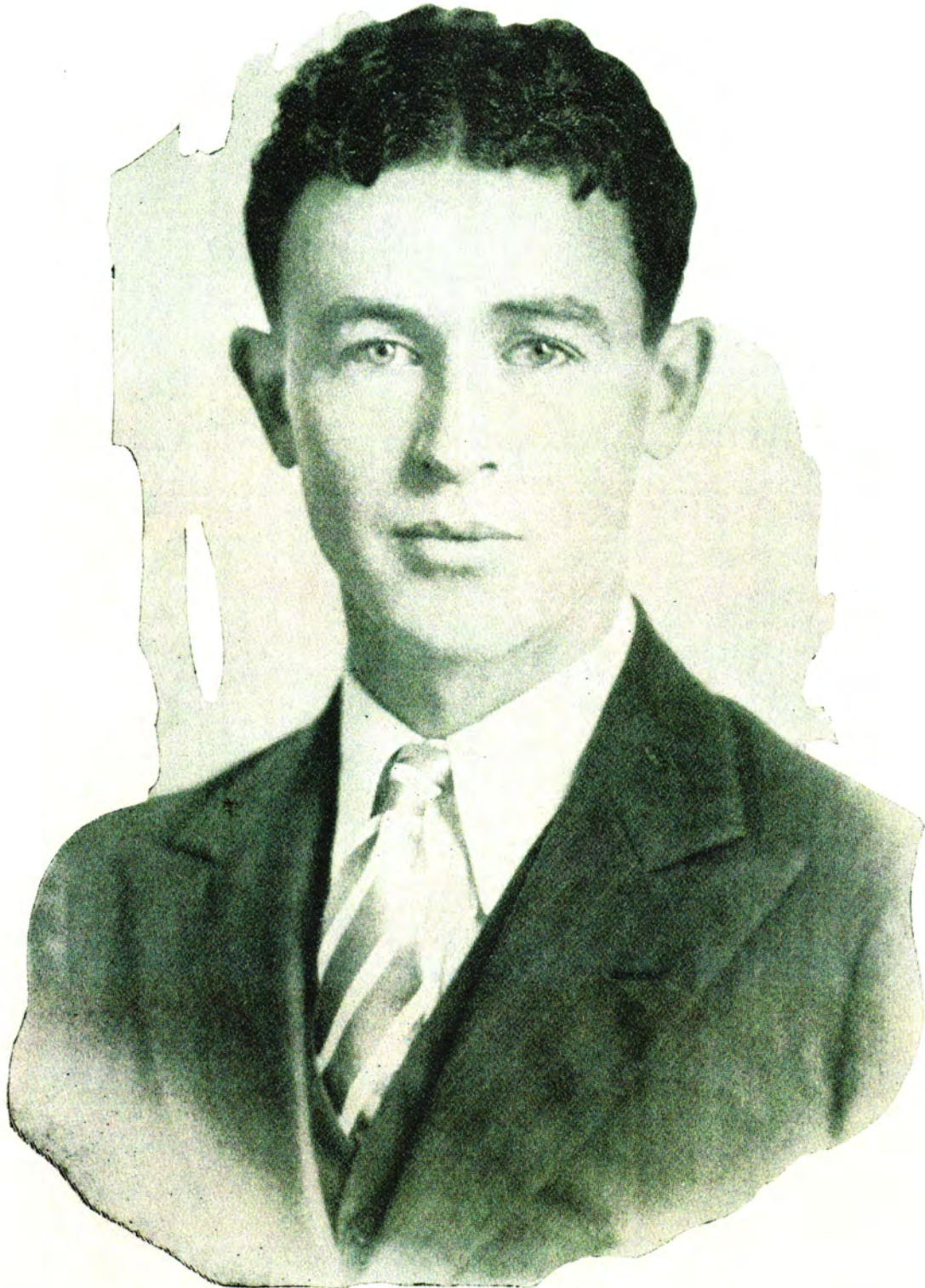
Activities



Campus Life

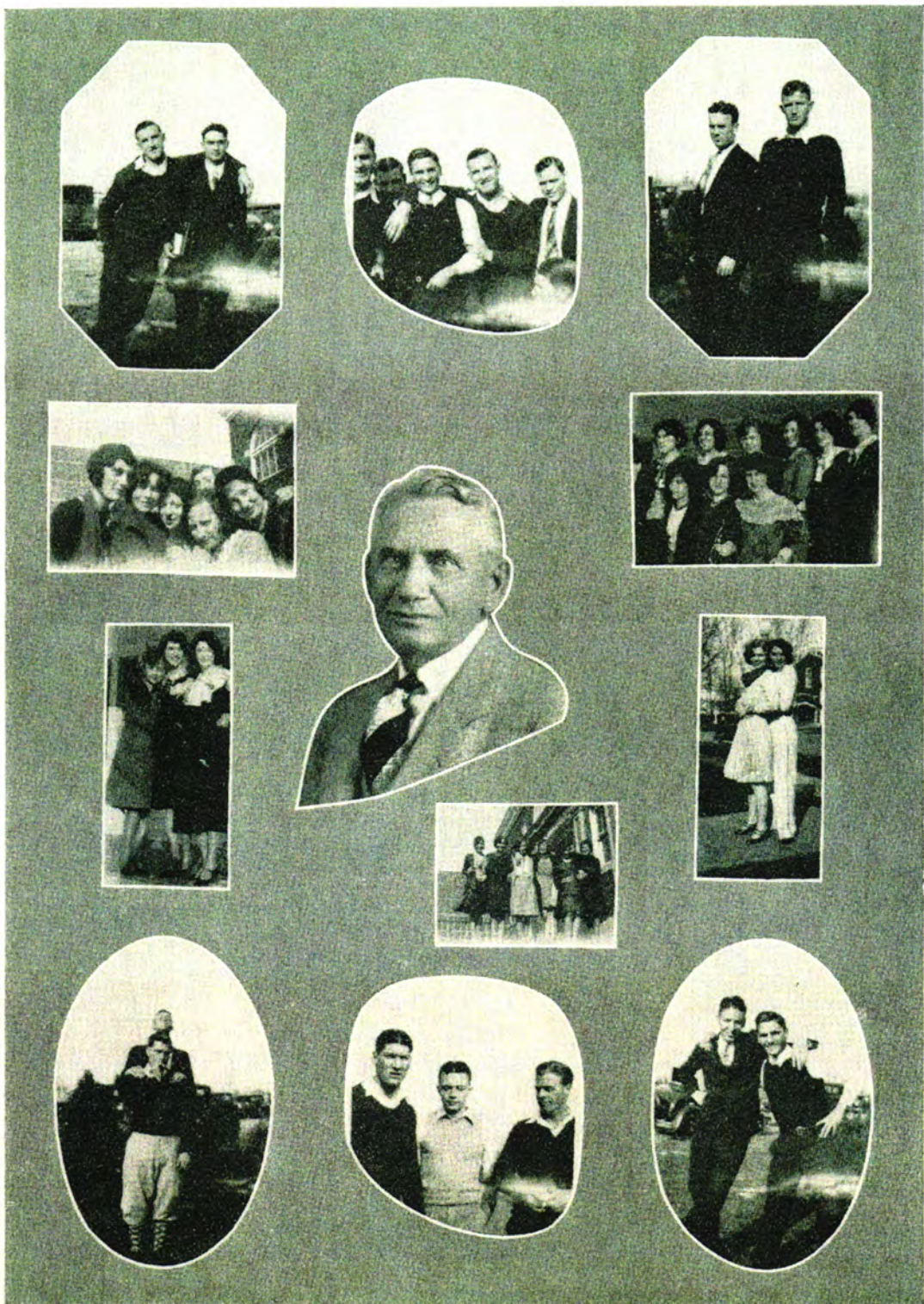


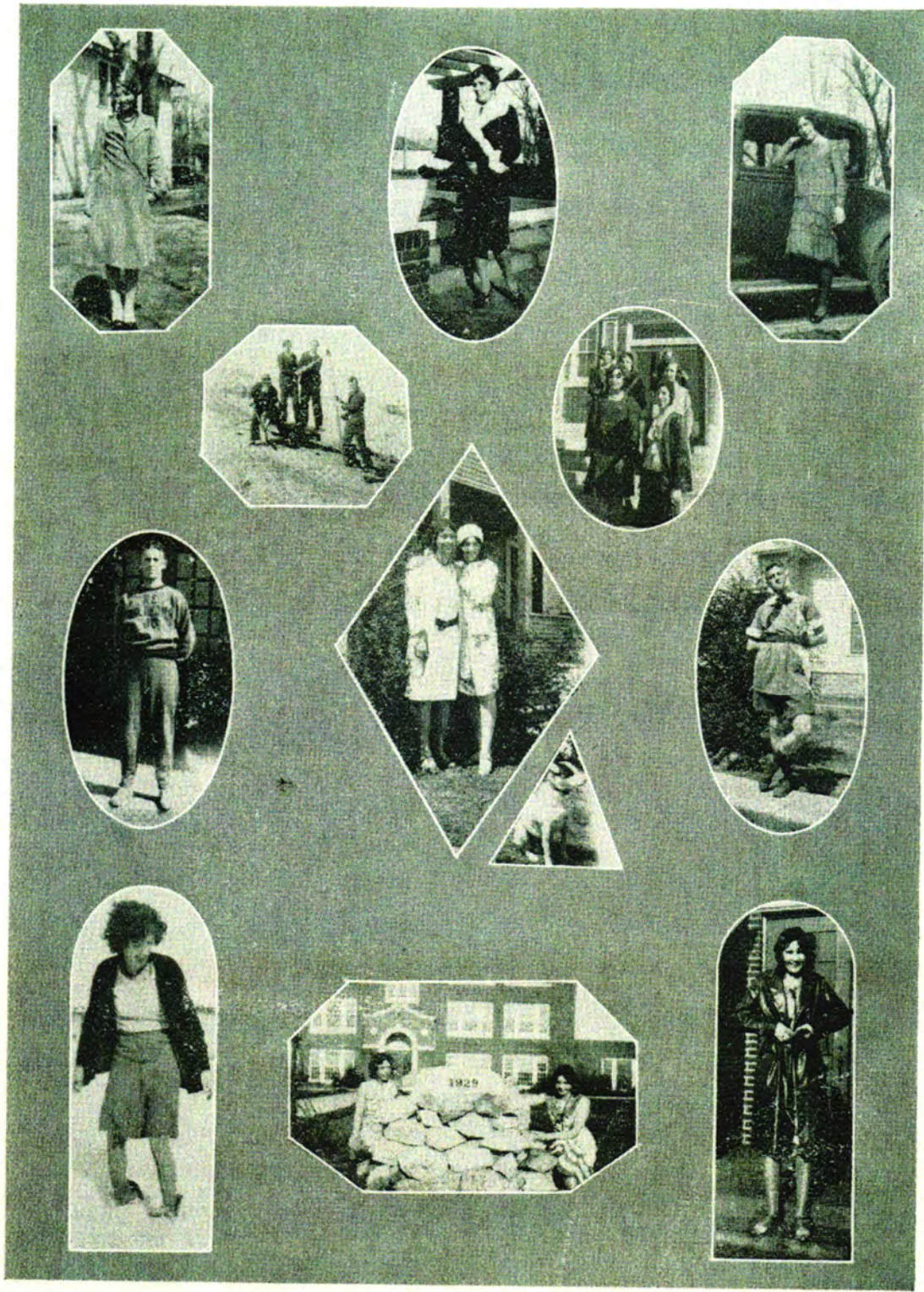
RUTH CRICKARD,
Campus Queen



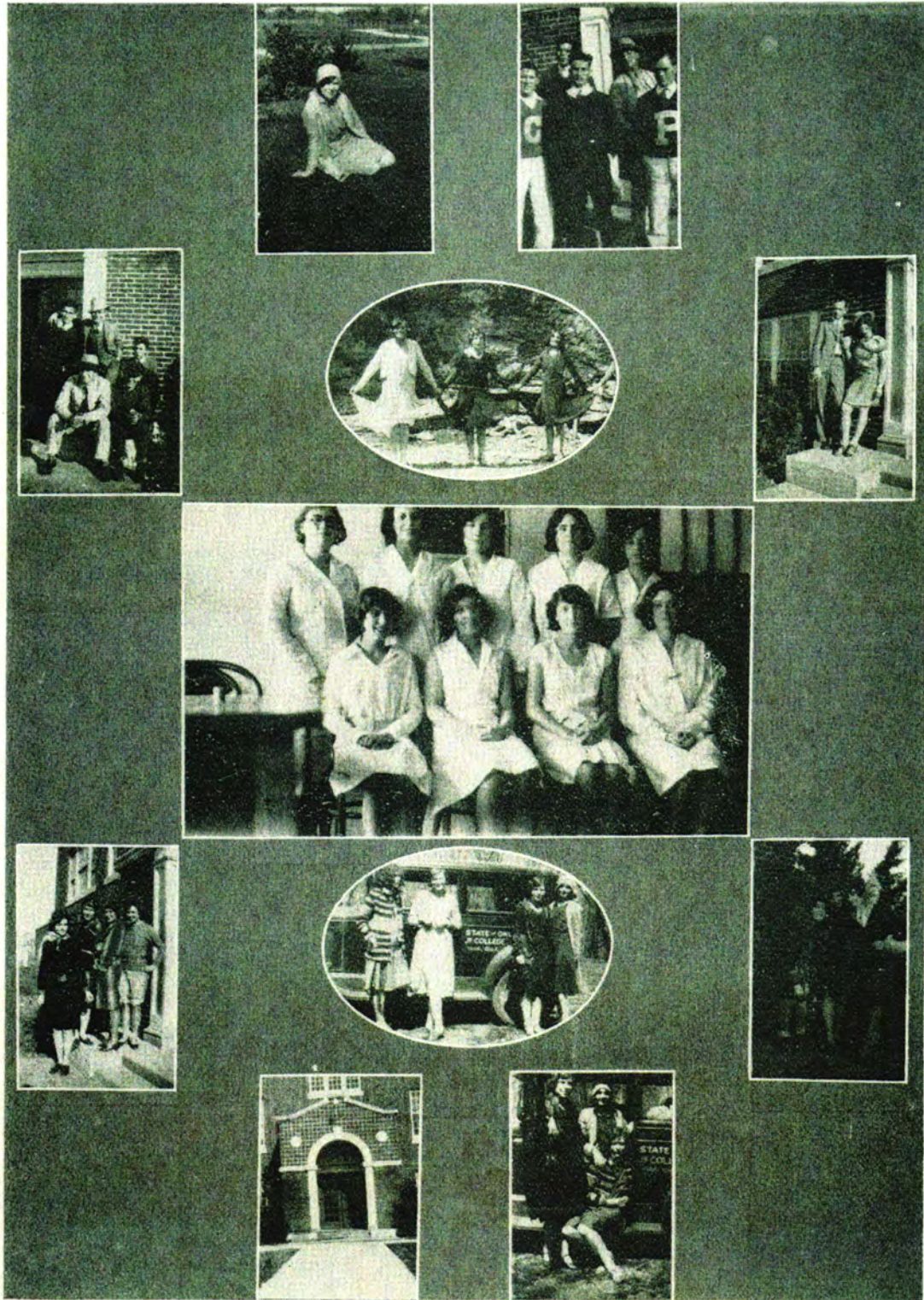
EVERETT CLARRY,
Campus King



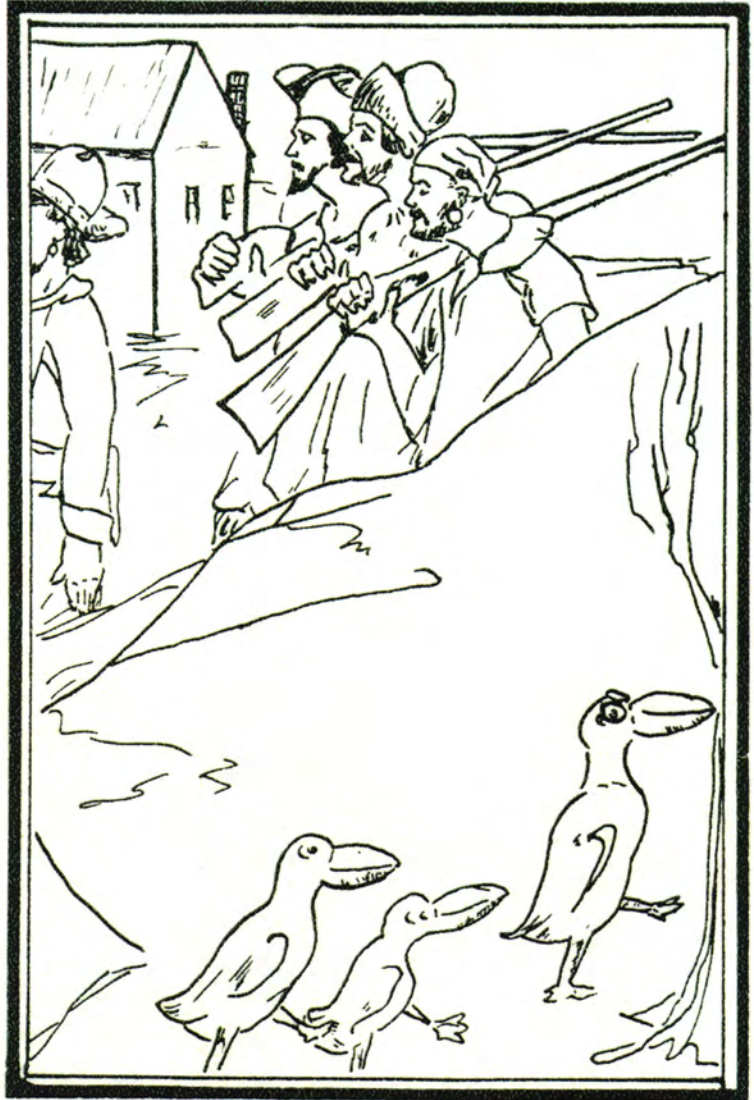












Organization

JAYSEER STAFF

Pauline Grubb	Editor-in-Chief
Helen Lohmann	Assistant Editor-in-Chief
Hazel Riddle	Business Manager
Don Sandmire	Assistant Business Manager
Virginia Cochrane	Art Editor
Irene Pace	Assistant Art Editor
Helen Gibson	Calendar Editor
Lillian Clarry	Assistant Calendar Editor
Edna White	Hot Box Editor
Bruce Ross	Assistant Hot Box Editor
Amanda Hutson	Sophomore Editor
Audrey Parkinson	Freshmen Editor
Ila Grace McCracken	Snapshot Editor
Jurene Watters	Assistant Snapshot Editor
Wayne Chambers	Sport Editor
George Windham	Assistant Sport Editor
C. S. Whitney and Clay DeFord	Faculty Advisors





PAULINE GRUBB, Editor-in-Chief

Not as the work of one individual, nor of three, but as the results of the whole-hearted co-operation of a generous and efficient staff, we present the Jayseer as a record of the school year. If we have succeeded in producing an Annual worthy of the College, we shall feel that our efforts have not been entirely in vain.

We extend to those who would praise, our thanks; to those who would discover fault, our apologies; and to those who have aided in the production of the Jayseer of 1930, our sincerest appreciation.

THE EDITOR.

HAZEL RIDDLE, Business Manager



To portray with originality and accuracy the story of the college year; to conform to the rules of college annual production; to pass the faculty censorship—throw this on a background of financial limitation and you have the task of a college annual editor and business manager. The campus will be the judge of the first; the second will devolve upon college yearbook experts, and if we haven't succeeded in the third, we'll hear about it soon enough.

When we accepted the responsibility, we were obligated to build a representative Annual for the Student Body of Northeastern Oklahoma Junior College, and we hope the confidence placed in the staff has been justified. If, through any error or omission your ire is aroused, we hope you will remember that we are, unfortunately, only human—and not infallible.

BUSINESS MANAGER.

Y. W. C. A.

The Young Women's Christian Association of the Junior College has as its purpose to unite in the desire to realize full and creative life, through a growing knowledge of God; to determine to have a part in making life possible for all people, and in this task to seek to understand Jesus and follow Him.

The organization is equally divided into four groups—social, membership, service, and program. The Y. W. C. A. is open to and welcomes any girl in the college who wishes to share our friendship and good times, besides doing her share to carry out the purpose in her life and on the campus.

Miss Faye Vann.....	Sponsor
Amanda Hutson.....	President
Ruth Crickard.....	Vice-President
Bea Austin.....	Secretary and Treasurer
Ila Grace McCracken.....	Chairman Program Committee
Helen Lohmann.....	Chairman Social Committee
Irene Pace.....	Chairman Membership Committee
Adda Mowry.....	Chairman Service Committee
Nadine Cherrington.....	Chairman Finance Committee

First Row—Garlock, Cross, Gibson, Cochrane, Riddle, Ballard, McCracken, Chenoweth, Baird, Boyd.

Second Row—Vann, Hutson, Weeks, Pace, McMinn, Mowry, Cherrington, Meeks, Coates, Moore, Jones.

Third Row—Parker, Crickard, Mitchelson, Clarry, White, O'Brien, Parkinson, Hedges, Wilson, Herrin.

Fourth Row—Watters, DeMier, Kennedy, Young, Bissell, Mayer, Goodin, Kimberling, Walker.



DEBATING CLUB

Clay DeFord, Coach.

The Jayseer Debating team for 1930 was made up of Amanda Hutson and Virginia Weaver, affirmative; Odin Seamster and Lee Ray Rudkin, negative; and George Windham, alternative.

They debated the question: "Resolved, That the Jury Trial in Criminal Cases Should be abolished". All five debaters participated in the first round of debates, held at Bacone early in March. The Jayseers debated five times and made a brilliant record. In April the team took part in the Annual Junior College Forensic Tournament which was held at Norman. In both the preliminary and the semi-final contests, the Jayseers won unanimous decisions over their opponents, but in the finals, they drew the small end of a two to one decision in their debate with the Bacone Indians. The eight points won by the debaters swelled the totals of the Jayseer Forensic team to twenty-one—four more than their nearest competitor—and enabled them to bring home the magnificent loving cup offered as a trophy to the winners of the tournament. This is the first trophy of its kind ever won by Northeastern Oklahoma Junior College.

PHI RHO PI

Founded at Grand Rapids, Michigan, 1929. 22 Chapters.

The Alpha Chapter of Oklahoma Phi Rho Pi, National Junior College Forensic Society, was organized in Northeastern Oklahoma Junior College in May, 1929. The following named students were charter members:

Mary Elizabeth Roberts, Amanda Hutson, Lyle Cunningham, William Poteet, Murray Stabb and Joe Henbest. Clay DeFord was chosen Sponsor.

An impressive initiation was carried out at the close of the school year. Pledges for this year are: Virginia Weaver, Lee Ray Rudkin, Marian Goodin, George Windham, Odin Seamster; and Wilma Baugh, of Springfield, Missouri. Only students who have participated in inter-collegiate Forensic contests are eligible to membership. Amanda Hutson is President, and Mary Elizabeth Roberts is Secretary of the local Chapter.

Top Row—Lee Ray Rudkin, Clay DeFord.

Center Row—Virginia Weaver, Amanda Hutson.

Lower Row—Odin Seamster, George Windham.

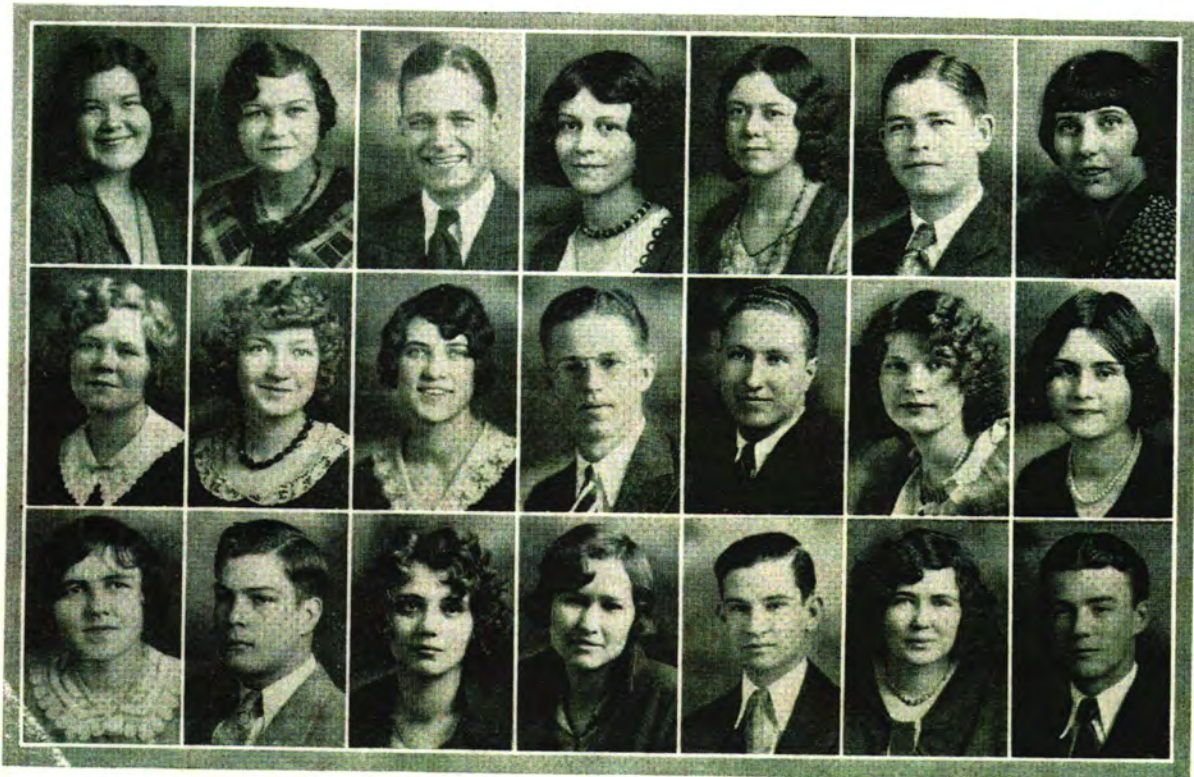


THE PLAYERS

Bessie Herrin, Director

The Players, the dramatic club of N. E. O. J. C., were organized in the spring of 1929. The purpose of this organization is to foster interest in the drama and play production. It has grown steadily throughout the year under the leadership of the President, Leonard Cox; Vice-President, Pauline Grubb; and Secretary-Treasurer, Leland Cotter. Five one-act plays have been presented during this year: "The Woman of Character", "The Teeth of the Gift Horse", "In 1999", "God Winks", and "The Trysting Place", with a reasonable amount of success. A full evening comedy, "The Importance of Being Earnest", by Oscar Wilde, the first performance given in the new college auditorium, was the outstanding production of the year.

In connection with this division of the college activities, there was installed in May, 1929, Cast No. 6, of the National Honorary Junior College Dramatic Fraternity, Delta Psi Omega. The charter members of this organization are: Clarence E. Martin, Gladys Lundy, Emerson Price, Helen LaGrone, Walter Hockett and William Poteet. The newly elected members are: Lee Ray Rudkin, Nellie Coates, Luther Wallen, Emma Catherine Walker, Leland Cotter, Anona Hedges, John Strecker and Marion Goodin.



PAN-HELLENIC

Ruth Crickard.....President
Helen Lohmann.....Secretary-Treasurer

MEMBERS

ETA UPSILON GAMMA

Ruth Crickard
Ila Grace McCracken

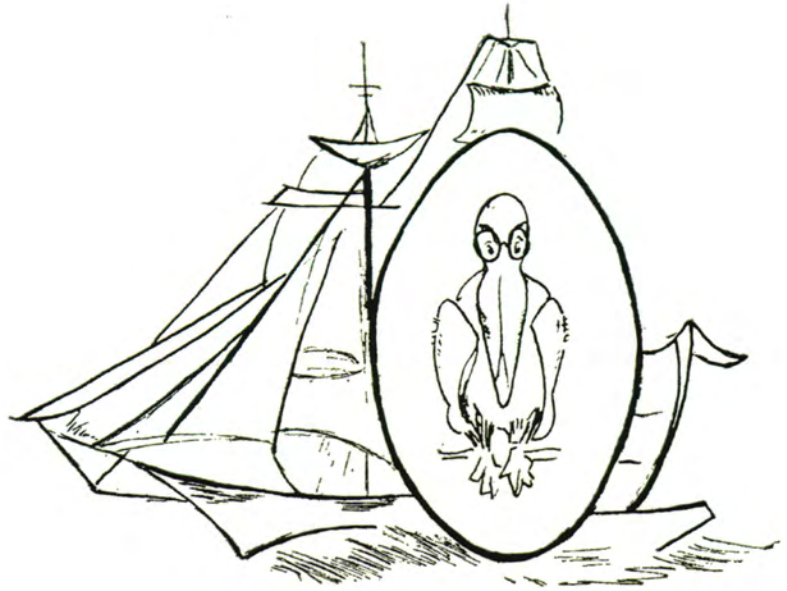
SIGNA IOTA CHI

Helen Lohmann
Virginia Bissell

FACULTY ADVISORS

Miss Beulah Parker
Miss Henrietta Moore
Prof. C. S. Whitney





Fraternities
and
Sororities

PHI THETA KAPPA

N. E. O. J. C., 1926

William Kline..... President
 Morris Tucker..... Vice-President
 Bea Austin..... Secretary-Treasurer
 Pauline Grubb..... Secretary-Treasurer, Grand Council
 Miss Faye Vann and Prof. C. S. Whitney..... Faculty Advisors

Byron Frisbie
 Helen Gibson
 Mrs. Cecilia Hampton
 Virginia Weaver
 Effie Reynolds
 Irene Pace
 Paul Sizemore
 Nellie Coates
 Irene Chenoweth
 Etta Lohmann

Monnie Thomas
 Ruth Phillips
 Marie Gyer
 Mulford Sibley
 Amanda Hutson
 Anna Margaret Bastain
 Charles Grisham
 Adda Mowry
 Crystal Baird
 Margaret Wilson



LOS DIABLOS BLANCOS

Founded Spetember 25, 1925, N. E. O. J. C.

Floyd Murphy, Faulty Advisor

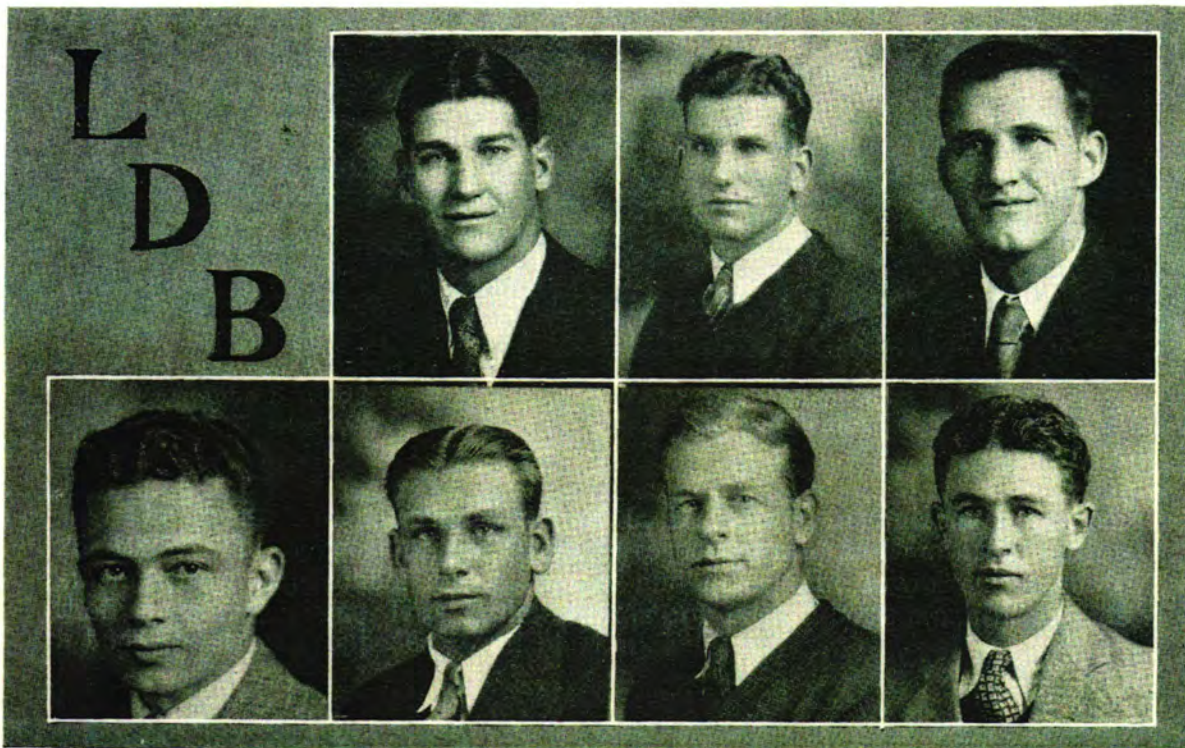
Charles Chesnut.....	Worshipful Diablo
Wayne Chambers.....	Pilot of the Golden Ark
Walter Jenkins.....	Guardian of the Royal Sink
Dick Ellis.....	Manipulator of the Silver Harp
Doyle McDonald.....	Wielder of the Crimson Paddle
Don Sandmire.....	Most Beloved Toreador
Everett Clarry.....	Protector of the Royal Fowls
Jack Corrigan.....	Holder of the Golden Key

PLEDGES

Grandville Griffin
 George Windham
 John Strecker
 Carl Moore

George Funderburk
 Arlo Giles
 Orville Johnson
 Myron Jenkins

The grand and paternal order of L. D. B. was organized September 25, 1925. The purpose of the Order is to perpetuate and maintain enthusiasm within the school and to assist and direct the lower classmen to their proper station. This Order stands for clean sportmanship, and as a body, is strictly opposed to all blackmail letters.



IOTA SIGMA TAU

Founded N. E. O. J. C., January 1, 1929

Dean L. B. Drake, Faculty Advisor

MEMBERS

Paul Sizemore
Bill Kline
Don R. Ault
Harold Rust

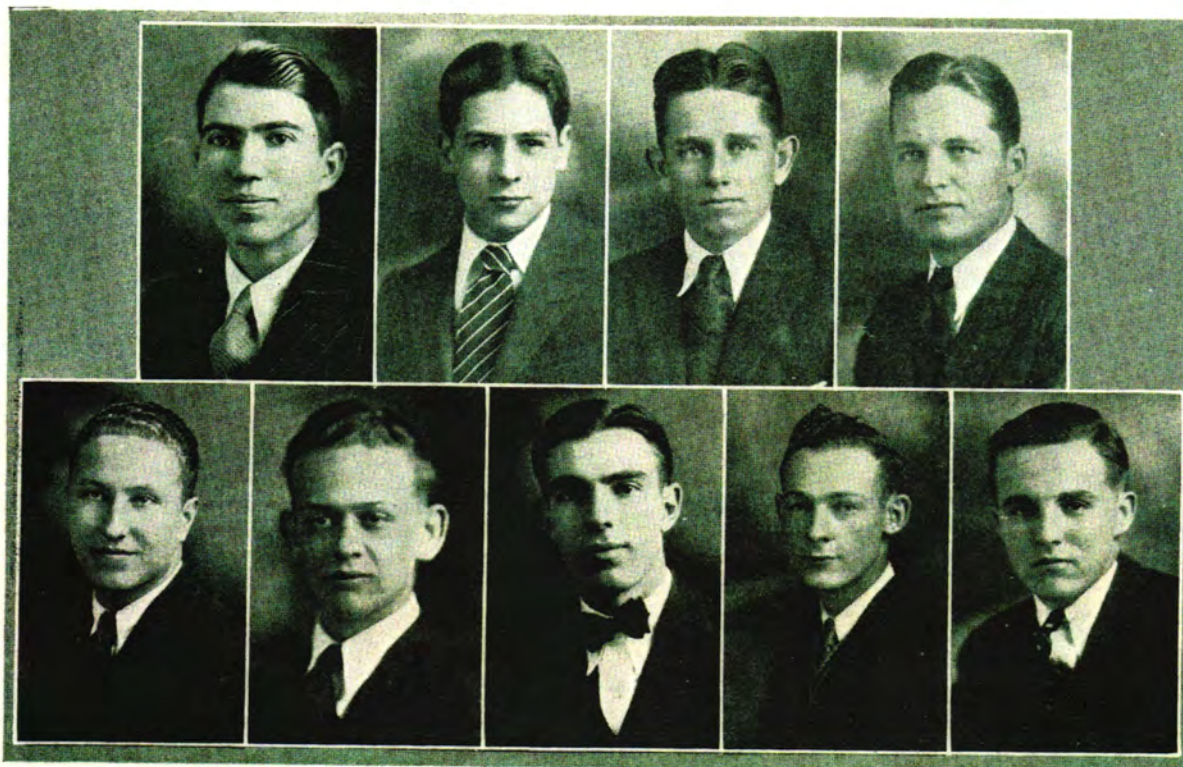
Maurice Carselowey
Dennis Beauchamp
Walter Heaslet
Leland Cotter

Edward Foster

PLEDGES

Talbert Taylor
Bill Rodman
Paul Mitchelson

Ellsworth Botts
Marshall Finch
Billy Coppock



ETA UPSILON GAMMA

Founded Christian College, Columbia, Missouri, 1901.
N. E. O. J. C. February 1, 1928. 14 Chapters
Miss Beulah Parker, Sponsor

Eta Upsilon Gamma members extended their activities to include Athletics, Scholastic and Campus Organizations. One of the most popular co-eds in Campus activities was a member of Eta Upsilon Gamma. She is Ruth Crickard, our charming Campus Queen and President of Psi Chapter. She is also President of Pan-Hellenic, Vice-President of Y. W. C. A., and Secretary-Treasurer of Student Council.

Pauline Grubb, a Phi Theta Kappa, was Secretary-Treasurer of Grand Council of Phi Theta Kappa, Editor-in-Chief of the Jayseer, Member of the Student Council and Vice-President of the Dramatic Club.

Carol Mitchelson, the popular Football Queen, Class Reporter and active in Y. W. C. A.

Hazel Riddle was the efficient Business Manager of the Jayseer and a member of Y. W. C. A. and Glee Club.

Lillian Clarry was Basketball Queen, member of Jayseer Staff, Y. W. C. A., and Class Secretary-Treasurer.

Ila Grace McCracken was a member of Pan-Hellenic, Jayseer Staff, and Y. W. C. A.

Carmen Sparlin as a member of the Glee Club and was elected Delegate to the Bi-Annual Conclave of her Sorority at Memphis, Tennessee.

Virginia Weaver, a Phi Theta Kappa, member of Dramatic Club, Forensic Society and Y. W. C. A., was voted the healthiest girl in Oklahoma.

Thelma DeMier was a popular member of Glee Club and the Sextette.

MEMBERS

Ruth Crickard
Ila Grace McCracken
Thelma DeMier
Lillian Clarry

Carol Mitchelson
Carmen Sparlin
Pauline Grubb
Hazel Riddle

PLEDGES

Margaret Swayze

Virginia Weaver
Miriam Ballard



SIGMA IOTA CHI

Founded St. James Xavier, Alexandria, Louisiana, 1901.

N. E. O. J. C., January 18, 1928.

Miss Henrietta Moore, Faculty Advisor,

PATRONESSES

Mrs. Vern Thompson
Mrs. Ella Huntley
Mrs. R. W. Skinner

Mrs. J. R. Lane
Mrs. F. M. Owens
Mrs. Floyd Myers

Mrs Virgil Cooper

MEMBERS

Jurene Watters
Virginia Bissell
Lucille Mayer
Etta Lohmann
Faye Meeks
Irene Laffoon

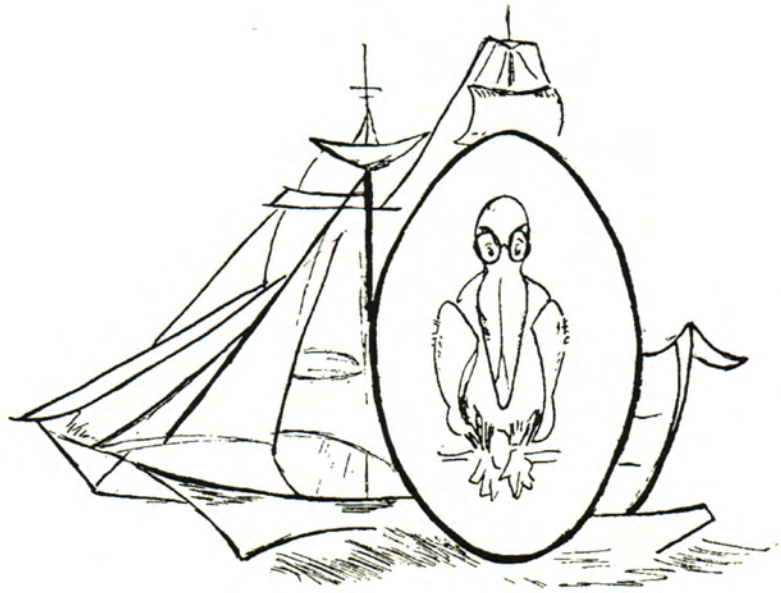
Beulah Cross
Virginia Cochrane
Helen Gibson
Nadine Cherrington
Helen Lohmann
Marion Goodin

PLEDGES

Elizabeth Bowers

Myrtle Young





Fine Arts

COLLEGE CHORUS



BEULAH PARKER

The College Chorus is one of the most popular musical activities on the campus, affording the opportunity for students to participate in the rendition of musical programs.

The purpose of the organization is to foster and perpetuate interest in the works of the masters, and in keeping with this purpose to present from time to time programs of the best choral music.

This year's organization is capably directed by Miss Beulah Parker, head of the Music Department of the College.

Their first appearance was made at the Coleman Theatre on the nights of February seventh and eighth, in connection with the all-talking, singing and dancing musical comedy, "Broadway Scandals". The program include a group of college songs as well as some popular screen songs. With Bruce Ross acting as Master of Ceremonies, the program was a huge success from beginning to end. "Sweeter Than Sweet", the solo part sung by Guy Cooper, went off with a "bang".

The College Chorus put on a splendid concert in the new auditorium the night of May fifteenth, drawing the plaudits of the appreciative audience.



COLLEGE ORCHESTRA

A harmonious blending of tones—those of the violin vibrating in smooth, powerful crescendoes, clear, piercing tones of the woodwinds rising and falling through the melody—the moaning saxophones, and the deep, snorous tones of the basses—that was the College Orchestra in action.

This year they have functioned oftener on the campus besides outside concerts. Best of luck to them. May we have as good an orchestra next year.



W. R. PARKER

MEMBERS

Billy Coppock
Luther Wallen
LaVerne Morrison
Joe Anderson
Talbert Taylor

Billy Rodman
John Malocsay
Walter Heaslet
Virginia Bissell
Lee Ray Rudkin

A. F. Moberly



WOMEN'S GLEE CLUB

The Women's Glee Club has been admirably fulfilling its purpose of instilling a true appreciation of higher musical values as well as cultivating the voices of the members and their ability to sing as a group. Membership in the organization is based upon the quality of voice and ability to read and understand music.

A large portion of the success of the Club is directly due to the capable manner in which it has been directed by Miss Beulah Parker, Head of Music.

MEMBERS

Helen Gibson
Anna M. Bastian
Carmen Sparlin
Beulah Cross
Elizabeth Bowers
Virginia Cochrane
Etta Lohmann
Lena Faye Kimberling
Emma Katherine Walker
Joe Alta Nelson

Thelma DeMier
Myrtle Young
Mildred Wheat
Hazel Riddle
Jurene Watters
Virginia Bissell
Lucille Mayer
Marion Goodin
Rebecca Kennedy
Amie Hoffman

Alice Sandmire

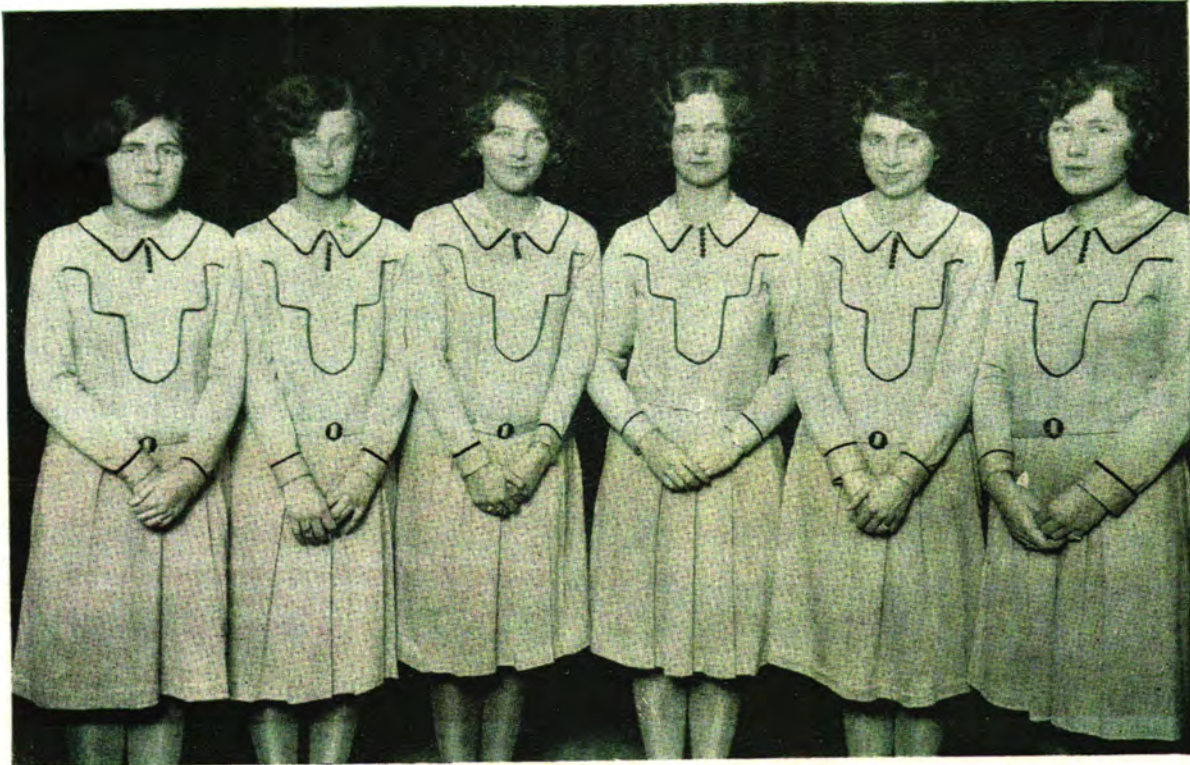


COLLEGE SEXTET

The College Sextet is composed of: Anna Margaret Bastian, first soprano; Helen Gibson, first soprano; Virginia Bissell, second soprano; LaNeva Winfrey, second soprano; Rebecca Kennedy, alto; Thelma DeMier, alto. The Sextet, under the direction of Miss Beulah Parker, has functioned as an integral part of the college music life in connection with the Girls' Glee Club. Their itinerary for this year has been more extensive than before. They have appeared in programs of civic organizations, Rotary Club, Lions Club, and Chamber of Commerce, besides chapel programs.

Anna Margaret Bastian
Helen Gibson
Virginia Bissell

LaNeva Winfrey
Rebecca Kennedy
Thelma DeMier



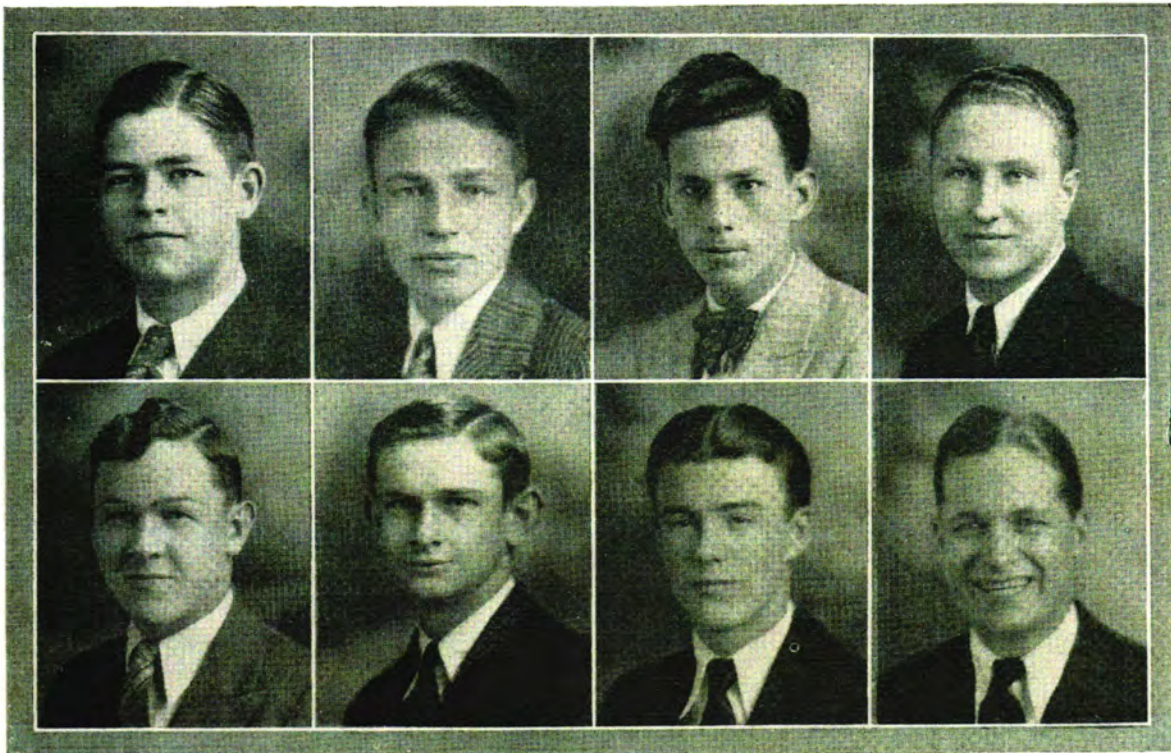
MEN'S GLEE CLUB

The Men's Glee Club, as before, has been taking prominent place in the musical life of the campus. Under the leadership of Miss Beulah Parker, it has merited attention and is an organization of most note-worthy achievements.

MEMBERS

Lee Ray Rudkin
Marshall Finch
Earldean Malone
Leland Cotter

Bruce Ross
Ellsworth Botts
Bill Rodman
Paul Sizemore



CONCERT

GIVEN BY MUSIC DEPARTMENT

Spring, 1930

WOMEN'S GLEE CLUB

"Miss Nancy's Gown" ----- G. W. Chadwick
"When Song Is Sweet" ----- Sans Souci
Reading ----- Selected
Marian Goodin
Vocal Solo, "Homing" ----- Del Riego
Anna Margaret Bastian
Piano Solo, "Etude" ----- Chopin

WOMEN'S QUARTET

"Nursery Rhymes" ----- Pearl Curran
"When I Go To Housekeeping for You"

MEN'S GLEE CLUB

"Blow High, Blow Low" ----- Roberts
"Honey Town" ----- Parks
"Jayseer Blue and Gold"
Reading ----- Selected
Leland Cotter
Vocal Solo, "Flower of All the World" ----- Woodford-Finden
Guy Cooper

MIXED CHORUS

Popular Group—



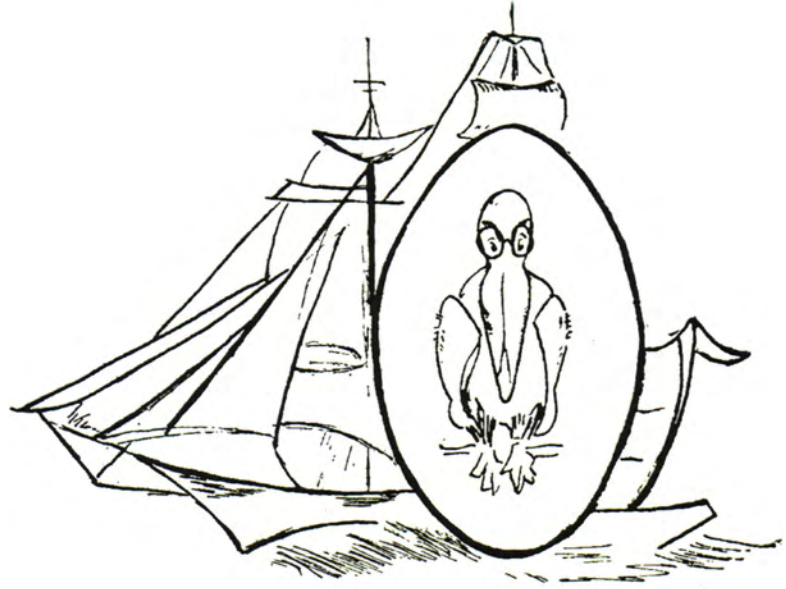
PROGRAM

Given at Coleman Theatre

BY MUSIC DEPARTMENT

February 7-8, 1930

- “Junior College Says Hello” -----Mixed Chorus
- “Singin’ in the Rain” -----Men’s Glee Club
- “Sweeter than Sweet” -----Solo part by Guy Cooper
- “The One I Love” -----Billy Rodman and Bruce Ross
- “On the Sidewalks of New York” -----Mixed Chorus
- Tap Dance -----Marion Goodin and Virginia Bissell
- “Junior College Says Good Bye” -----Mixed Chorus



Hot Box

CALENDAR 1929-30

1929—

September 6-7—

Registration—Freshies getting acquainted with N. E. O. J. C.

September 9—

School opens. Do I have English to-day?

September 16—

School mixer.

September 16-17—

Gamma and Sigma date cards given.

September 23—

Y. W. C. A. party at Helen Lohmann's. New acquaintances.

September 24—

Gamma formal dinner at Pierce Terminal.

September 25—

Sigma Pullman party. Is it real!

September 26—

Class meetings. Pep meetings and bonfire. Snappy snake dance.

September 27—

Whoopee! First football game, Independence Jr. College vs. Jayseer.
Victory!

October 4—

Great news—work starts on new building. Jayseers defeat Parsons
Jr. College.

October 11—

Jayseers are victorious over Bolivar.

October 14—

Sigma paddle week. She who gets whipped. Jayseers defeat Ozark
Wesleyans.

October 25—

Teachers' meeting at Tulsa.

October 26—

Nearly all of Miami goes to Claremore to see the Jayseers tie O. M.
A., 7-7.

October 29—

Pan-Hellenic gives a Hallowe'en party and dance.

November 1—

Football boys go to Muskogee to play the Bacone Indians.

November 4—

Pauline and Georgia go to Phi Theta Kappa convention, Columbia, Mo.

November 5—

Glee Club weiner roast at Robinson's clubhouse—parade around the
haystack.

November 6—

Miss Moore gives insanity tests.

November 7—

Geology class goes to Seneca to inspect the works of nature.

November 8—

Annual drive begins. Have you brought your dollar yet?

November 11—

Armistice—Football game with Wilburton at McAlester. Another
victory. Gammas come back sleepy eyed from a "tour of in-
spection." Herbert Puckett's farewell speech.

- November 15—
Another game is won. We take it as a matter of course now.
- November 18—
Engraving contract for Annual is signed. Annual staff is elected by Student Council.
- November 19—
Band practice or jazz orchestra?
- November 22—
Junior College holds memorial services for Mr. James F. Robinson.
- November 25—
Six weeks exams. Annual staff meeting.
- November 26—
Work progressing on new building.
- November 27—
Thanksgiving to be thankful for. Boys go to Tonkawa. Many go. It looks as if we may win the championship.
- December 2—
Sigma Football Banquet. Oh, those dishes—and Spike's place card.
- December 4—
Class meeting for selection of king and queen. Freshmen—Tommy and Edna. Sophomore—Everett and Ruth.
- December 5—
Pep meeting—snake dance down town and such pep—poolroom—behind the footlights—Lions.
- December 6—
The great day is here—championship play-off between O. M. A. and N. E. O. J. C. "I am forced to admit, I am one tough egg." We lose the game as well as our chance for the championship by a score of 13-7. However it was a grand game. Gamma party for the team.
- December 9—
Carol Mitchelson is chosen Football Queen.
- December 11—
Plays given by Dramatic Club.
- December 16—
Gamma banquet for Football boys. Arlo Giles elected captain for 1930.
- December 17—
Assembly at 10:00. Glee Club pictures taken. Wonder if anyone had his eyes open?
- December 18—
First snow—how many cars frozen?
- December 19—
Y. W. C. A. Christmas party for children.
- December 20—
Christmas Holidays—a chance for recuperation—And how!
- December 23—
Student Council dance at Elks hall.
- December 30—
School again and what's more, we get a holiday for New Year's.
- December 31—
Ruth and Everett are elected Campus King and Queen.
- 1930—
January 2—
Jayseers beat the Joplin DeMolays 31-24.

- January 7—
Basketball boys go to Tonkawa to be beaten twice.
- January 8—
More sleet and snow. Exam. schedule and second semester schedule posted.
- January 9—
Something to eat in the Y. W. C. A. room.
- January 14—
Glee Club pictures are taken again—also Y. W. C. A. The Annual staff holds a worried consultation.
- January 15-16-17—
FINALS !!!
- January 27—
After a week's vacation it seems terrible to come back to school.
- January 29—
New ruling in regard to classes being dropped—but still we have classes changed and dropped.
- January 31—
Basketball games with Tonkawa Prep. One game to each.
- February 2—
Mr. Whitney and Mr. Murphy are both absent from their classes. Why didn't we have all our classes under them?
- February 4—
A pie supper. Nuf sed.
- February 6—
Assembly for urging sale of theater tickets.
- February 7-8—
Program at Coleman theater by Glee Clubs.
- February 11—
Announcing and pledging of Phi Theta Kappa candidates.
- February 12—
Satires written in English IV class. Who gets criticized?
- February 13—
Gammas have party for rushees and patronesses at Hotel Main.
- February 14—
Sigmas give party at Terminal.
- February 20—
Dramatic Club gives sample of work—3 one-act plays at 7:30 in the auditorium.
- February 21—
Football wiener roast at Fribley's farm. Plenty of rain to make an enjoyable trip.
- February 24—
Annual staff meets to discuss problems of finance. Plans look gloomy.
- February 25—
Lillian Clarry chosen Basketball Queen.
- February 27—
Gamma patronesses entertain at Hotel Miami, afterwards a line party to Coleman.
- February 28—
End of a perfect day. Everyone looking forward to getting grade cards—but not to exams.

- March 2—
Pauline and Ruth leave for Phi Theta Kappa convention, William Woods college, Fulton, Mo.
- March 3—
Student Council meets to discuss plans for pie supper. All business men invited and a good crowd expected.
- March 4—
Pie supper; a howling success and we made heaps of money. Pauline and Ruth return from Fulton. Miami well represented.
- March 6—
Getting ready for 6-weeks exams. Everything quiet! But where?
- March 7—
End of first six week. A relief for teachers and students.
- March 10—
Cards given out—teachers busy answering questions.
- March 17—
Sigmas entertain Gammas at tea at Mrs. J. R. Lane's.
- March 19—
L. D. B. initiation. Banquet—questionable hens.
- March 27—
Glee Clubs go to Grove. And Dramatic Clubs. Party afterwards at Gibson's.
- March 28—
Y. W. C. A. girls go to convention at Independence. Seven girls, Miss Moore, and Miss Vann go.
- March 31—
Foods class entertains with bridge in Home Ec. room.
- April 1—
Rat Day. Good program and lots of pep. Emma Catherine and Mildred imitate Virginia and Marian. Splendid work. Could we see ourselves as others see us. Alice Sandmire and George Funderburk chosen king and queen. All adjourn to Fribley's farm.
- April 2—
Freshies recuperating. Not much studying done.
- April 3—
Students working on debates and speeches for meet at Norman.
- April 4—
All are searching for chord in the music room from airs in the library.
- April 7—
School duties resumed but Freshies still hold blank faces and crave enlightenment from their seniors.
- April 10—
Glee clubs go to Wyandotte. Pauline and Hazel "rushed" by engravers.
- April 14—
Foods class serves luncheon to Board of Regents in Home Ec. room. New building well under way and we still have hopes. Debaters leave for Norman,
- April 18—
Debaters and orators return with cup. Displayed in assembly.
- April 22—
Agriculture class goes to Neosho. Geology II class goes to Kansas to see coal bed formation and other signs of interest. Y. W. C. A. meeting in auditorium to discuss "Hobbies."

- April 24—
Student Council meets. College play practice started on "Importance of Being Earnest".
- April 25—
Business and Professional Women's Club entertained by students in Dramatic Club by "A Woman of Character."
- April 26—
Track Meet with Ozark Wesleyan. Meet tied, and May 3rd set to play off.
- April 28—
Student Council Meeting to discuss plans for Stunt Night.
- April 29—
Rev. Michael speaks in assembly. Student Council Meets.
- April 30—
Stunt Night. Student Council and Girl's Glee Club take prizes. Mr. Floyd accused of using State's money for marcel or finger waves.
- May 1—
Y. W. C. A. has luncheon in Home Economics Room. All the "good cooks" prepare for College Picnic. Men's Glee Club entertains Commerce High School.
- May 2—
All aboard for Lakeside! Several learn to roller skate—others went swimming. Don and Hazel win at bridge (as usual). After getting plenty to eat, the gang goes to Carthage for triple track meet. Fort Scott first and Jayseers second.
- May 4—
Charles Chesnut and Talbert Taylor begin to bring flowers to all their teachers.
- May 12—
"The Importance of Being Earnest" presented at opening of new Auditorium.
- May 13—
First assembly held in new auditorium. The Rev. Kendall gives very impressive talk. Members of Rotary Club were guests of Mr. Floyd. Luncheon was prepared by the Home Ec. girls.
- May 15—
Men's and Women's Glee Clubs appear in concert which proved to be a howling success.
- May 16—
Hold Everything! Lions Club "roars" in Home Economics department. Two prospective members for Foods class—Mr. McIntosh and Mr. Skinner.
- May 17-18—
Boys leave for Stillwater to enter Track meet.
- May 20—
Teachers showered with chocolates and flowers. Exams will follow.
- May 22—
Final exams begin. Hold everything. We never did like 'em and always will!
- May 25—
Baccalaureate services at Christian church. The Rev. James O. Michael officiating.
- May 29—
Commencement exercises in College Auditorium.

FINANCIAL REPORT OF THE 1930 JAYSEER

RECEIPTS:

One can of Hop powder -----	\$ 85.00
Rent of Annual room to bridge players -----	25.00
From George Funderburk for being head of Rat Day -----	100.00
One cake of Fleischman's Yeast -----	.03
Miscellaneous -----	543.00
Five gallons of WATER -----	2.00
TOTAL -----	\$360.00

FINES:

Driving behind trucks -----	2.00
Driving auto without radiator cap (had only Sunday caps) -----	45.13
Typewriter ribbon -----	87.00
Paid for old jokes thunk up by last year's staff -----	967.00
Printing (including cost of personal cards) -----	111.11
Inspirations -----	310.00
Electric light bills -----	36.00
Paid to Steno for value received -----	2.00
Engraving (including cutting of name on Elms) -----	579.00

INCOME:

Rental of office for nite use -----	350.00
Hold-up from office door -----	1050.00
Contributed by co-eds -----	3.00
Janitor's contribution for "Morning After privileges" -----	50.00
Advertising and miscellaneous graft -----	400.00
Bribes -----	30.00

Daily sworn before a Reprobate Judge the day this book comes out, darn it; for further statistics we refer you to the World's Almanac and the "Normal Instructor and Primary Plans."

In addition to this the Jayseer staff of 1930 leaves the following legacy to the staff next year: one bottle capping machine, three old College Humors, one bad reputation, six darn good addresses, three light bulbs that have never been used, and one cushion.

THE JAYSEER ENCYCLOPEDIA

The following definitions of important people, places, and things have been extracted from the Jayseer Encyclopedia for the edification of the student body in general and the Freshmen in particular.

A—A letter rumored to designate a grade in the college. After a year of continuous, if not congenial, investigation of the subject, we report that said grade is more precious than pre-war stuff.

Athletics—"There is no greater glory for a man in all his life than to win his own hands and feet." Yes, dear, this is college.

Chaperon—Ideal and permanent occupation for deaf, dumb, and infirm ladies.

Crickard—It's RUTH, our Campus Queen!

Campus—Where the spirit of the W. C. T. U. should be strengthened.

Chesnut—It must be Charles—the tough egg!

Debaters—The most degenerate speakers in school. If you're a helluva speaker—go out for debate.

Family—A popular sociology course, usually taught by a bachelor or an old maid.

F—A consonant which does not mean funny. Any instructor will gladly give you one, and if enough are accepted at the same time, the letter stands for freedom.

Frats—God's gift to the jewelry dealers—I owe, you owe, he owes, we owe, you owe, they owe.

Roommate—Confidante, clothing store, fiscal agent, and liability.

Pizzerinctum—A hazing club which believes that the height of manly effort is embracing elm trees on the campus.

Sophomores—Morons who are overlooked in the Freshman flunkings.

Work—What most students, especially Phi Theta Kappas, come to school to avoid.

Zero—Temperature of the girl whose date took her to the student council dance the night of January 8.

Jayseer Advertisers—Those who pay money to have their names in "America's Finest College Annual."

The Editor—The goof who always misspells your name and distorts your image in the book.

The Business Manager—The goof who ought to be a student in journalism.

Hot Box Editor—That unknown personage who sees all, knows all, and tells all.

Jayseer—The annual chronicle of crime, with chromos of the criminals, which everybody wants—but nobody wants to pay for it.

Funderburk—The official mole catcher.

PEOPLE WE LOVE TO HATE

Profs who give quizzes the day after holidays.

The fellow who beats you to the last booth at the Coleman-Hutts.

The girls who call my fraternity brothers "smart."

The girl who talks of her date of the NITE BEFORE.

The alumnus who speaks of school when HE was in school.

IT'S A FACT

—that most girls come to school to get married.

—that all other colleges offer their athletes soft jobs to get them to attend.

—that if a girl keeps hinting to a Sigma Tau, he will propose.

—that most late dates are for no good purpose.

—that Red Moore should dye his hair.

—that the Student Council meets once a week.

—that in spite of Hazel, Pauline put out a high rating annual.

—that the non-fraternity men keep the campus safe for democracy.

—that the college officials should furnish a place for the L. D. B.'s to hold mid-nite meetings.

—that in spite of Pauline, Hazel put out a high rating annual.

—that lessons and books are unnecessary fixtures in college life.

—that the editor and business manager will need bodyguards when the book comes out.

—that Hell Week is a time when no girl's clothes are safe.

—that Hap Dunlap is a campus fixture.

Just another about the absent-minded professor—he rolled under the dresser and waited for his collar button to find him!

We've heard of postmen taking hikes on holidays, but when the other day we saw a medical student at a burlesque show—WELL!

Marie G.—“That fellow's driving his car so carefully that I think he must be a new driver..”

Evelyn S.—“No, he just paid cash for the car.”

The collegiate car chugged painfully up to the gate at the football game. The gatekeeper demanding the usual fee for cars called out:

“Twenty-five cents for the car!”

Dick Ellis—“Sold!”

Carmen S.—“Nobody was drunk at the game. Why, there wasn't even a breath of whisky. And nobody threatened to murder the referee or made funny cheers. There were no fur coats present and nobody sang dirty songs.”

Hazel R.—“And was that a football game?”

C. S.—“No, of course not—it was a bridge game at the Old Ladies' home.”

Louise J.—“So that silver dollar was right under Abie's nose?”

Monnie T.—“No, only under the first couple of inches of it.”

Mother—“Daughter, how many times do you imagine that Jack has kissed you?”

Lillian C.—“So far, Mother, I haven't had to imagine.”

Lena A.—“Well, here are your shoes all soled. Where's the money?”

Scotchman—“Yes, where is it? Your sign says: 'Shoes soled while you wait for one dollar.' I'm still waiting for that dollar.”

First Freshman—“I'll bet we have a bigger bathtub than your family does.”

Second Squirt—“Maybe so, but I'll bet ours has the biggest ring!”

Papoose—“Baw-w-w-w, I wanna drink.”

Eskimo Mother—“Shut up, it's only six months until morning.”

Audrey P.—“Pat, I like your new suit.”

Pat M.—“New suit! You mean my wardrobe.”

Audrey—“Well, turn around and let me see your wardrobe.”

Salesgirl—“And what kind of step-ins would you like, sir?”

Customer—“Like those the girl sitting there is wearing.”

Virginia W.—“I sure fixed Bruce Ridenhour. He'll never copy again.”

Margaret S.—“How did you do that?”

Virginia—“Simple. He used to copy all my answers. I thought I would teach him a lesson, and consequently in the final exam I put down the wrong answers. He copied them and flunked the course.”

Margaret—“Gee, that's great, but how did you get through?”

Virginia—“Gosh, I never thought of that.”

The three R's of modern college life are Riding, wRestling and Recklessness.

Farmer Grisham—"An' how's Lawyer Carselowey doin', Doctor?"
Doctor Sizemore—"Poor fellow! He's lying at death's door".
Farmer G.—"That's grit for ye—at death's door an' still lyin'."

Bruce Ross—"Where did you get that black eye?"
Billy Rodman—"Told the conductor I was travelling on my face, and he punched the ticket."

Jack C.—"What kind of a car has Lee Ray?"
Russell R.—"Well, he'd feel tremendously flattered if you called it second hand."

Morris T.—"What do they call the last three hairs on a dog's tail?"
Ingram C.—"Tell me. This suspense is terrible."
Morris—"Dog hair."

"I believe this school is haunted."
"Why?"
"They are always talking about the school spirit."

Mrs. Floyd—"I suppose you carry a momento of some sort in that locket of yours?"
Mrs. DeFord—"Yes, it's a lock of my husband's hair."
Mrs. F.—"But the Professor is still alive."
Mrs. DeF.—"Yes, but his hair is gone."

Hap Dunlap—"Helen, dear, I've been wanting to ask you something for days."
Helen L.—"Go ahead, I have had the answer ready for months."

Hazel R.—"Hey, you're sitting on some jokes I cut out."
Pauline G.—"I thought I felt something funny."

Buddy P.—"Did you ever run across a fellow by the name of Gardner?"
Ed Foster—"I never stop to ask their names, I just let 'em lay."

Anna Margaret—"After I'd sung my encore I heard a man call out 'Fine! Fine!'"
John S.—"And did you have to pay it."

Charles C.—"What would you say if I blew you a kiss?"
Edna W.—"I'd say you were a very lazy fellow."

Conductor—"Can't you see that sign 'No Smoking'?"
Earldeen M.—"Sure, that's plain enough. But there's so many dippy signs here. One says, 'Wear Beaute Corsets?' So I ain't paying any attention to any of 'em."

Harry R.—"Great stuff they peddle here in Miami. The other night I lapped up two quarts and I didn't even stagger."
Dick Ellis—"Two quarts! And you didn't even stagger?"
Harry—"Heck, no? I couldn't even move!"

Farmer Grisham—"An' how's Lawyer Carselowey doin', Doctor"?
Doctor Sizemore—"Poor fellow! He's lying at death's door".
Farmer G.—"That's grit for ye—at death's door an' still lyin'."

Bruce Ross—"Where did you get that black eye?"
Billy Rodman—"Told the conductor I was travelling on my face, and he punched the ticket."

Jack C.—"What kind of a car has Lee Ray?"
Russell R.—"Well, he'd feel tremendously flattered if you called it second hand."

Morris T.—"What do they call the last three hairs on a dog's tail?"
Ingram C.—"Tell me. This suspense is terrible."
Morris—"Dog hair."

"I believe this school is haunted."
"Why?"
"They are always talking about the school spirit."

Mrs. Floyd—"I suppose you carry a memento of some sort in that locket of yours?"
Mrs. DeFord—"Yes, it's a lock of my husband's hair."
Mrs. F.—"But the Professor is still alive."
Mrs. DeF.—"Yes, but his hair is gone."

Hap Dunlap—"Helen, dear, I've been wanting to ask you something for days."
Helen L.—"Go ahead, I have had the answer ready for months."

Hazel R.—"Hey, you're sitting on some jokes I cut out."
Pauline G.—"I thought I felt something funny."

Buddy P.—"Did you ever run across a fellow by the name of Gardner?"
Ed Foster—"I never stop to ask their names, I just let 'em lay."

Anna Margaret—"After I'd sung my encore I heard a man call out 'Fine! Fine!'"
John S.—"And did you have to pay it?"

Charles C.—"What would you say if I blew you a kiss?"
Edna W.—"I'd say you were a very lazy fellow."

Conductor—"Can't you see that sign 'No Smoking'?"
Earleen M.—"Sure, that's plain enough. But there's so many dippy signs here. One says, 'Wear Beaute Corsets?' So I ain't paying any attention to any of 'em."

Harry R.—"Great stuff they peddle here in Miami. The other night I lapped up two quarts and I didn't even stagger."
Dick Ellis—"Two quarts! And you didn't even stagger?"
Harry—"Heck, no? I couldn't even move!"

COLLEGIATE ALPHABET

- A—is for auto, in hiding all day;
B—is for blanket all covered with hay;
C—is for classes and also for college;
D—is for dean, all stuffed full of knowledge;
E—is for English, not heard on the campus;
F—is for freshman, whose trousers are worn;
G—is for graduate, hope of the few;
H—is for house-mother, something quite new;
I—is for Incomp.—meaning your grade;
J—is for janitors: beds never made;
K—is for kissing, which never grows stale;
L—is for laundry, the college boy's mail;
M—is for money, an unheard-of word;
N—is for neck, not a noun but a verb;
O—is for Oscar, bookishly wise;
P—is for paddling, a good exercise;
Q—is for quad, the place for a smoke;
R—is for rotten, meaning that joke;
S—is for singing—in showers it's hell;
T—is for track—the M. & St. L.;
U—is for "UNDER", applied to tight duds;
V—is for varsity, among our night clubs;
W—means women—it also means wine;
X—is for ending a passionate line;
Y—is for yodeler (he ought to be shot);
Z—is for zero, which means "not so hot".

—Grinnell Malteasor.

**THESE ADVERTISERS BELIEVE IN A
GREATER N. E. O. J. C.**

<p style="text-align: center;">A</p> <p>C. R. Anthony Company*</p>	<p>Henry Saft, Furniture Hoffman Music Company** Holcom Plumbing & Heating Co.**</p>
<p style="text-align: center;">B</p> <p>Bank of Wyandotte* B & K, Men's Wear Booster Cafe Bomford Brothers Company** Bigham Implement Company*</p>	<p style="text-align: center;">K</p> <p>Karbe Grocery* Ketcham Lumber Company*</p>
<p style="text-align: center;">C</p> <p>Campbell Confectionery* Coleman-Hutts Drug Company*** Coleman Theatre*** Commerce Mining & Royalty Co.*** Consumers Gas Company** Cooper Undertaking Company* Coyne Lumber Company Crown Drug Company* Craig, Dr. J. W. Cunningham Oil Company**</p>	<p style="text-align: center;">M</p> <p>Marvel Bread Company Miami Chat Company* Miami News-Record*** Miami Motor Company Millner & Fribley** Montgomery Ward & Company*** Morgan Paint and Glass Company</p>
<p style="text-align: center;">D</p> <p>O. T. Dixon Printing and Stationery Company*** Dixon's Miami Flower Shop*** Doan's Radiator and Tin Shop</p>	<p style="text-align: center;">N</p> <p>Northeast Oklahoma Railroad***</p>
<p style="text-align: center;">E</p> <p>Economy Grocery** Elks Lodge*** Elliott Motor Company</p>	<p style="text-align: center;">O</p> <p>O. K. Plumbing Company*</p>
<p style="text-align: center;">F</p> <p>First National Bank, Miami*** First National Bank, Commerce* First National Bank, Fairland Faulkner's Cafe Faulkenberry's Store</p>	<p style="text-align: center;">P</p> <p>J. C. Penney Company, Inc.** Photo Abstract Company* Price Chevrolet Company, Fairland*</p>
<p style="text-align: center;">G</p> <p>Gibson Mercantile Company, Grove*</p>	<p style="text-align: center;">R</p> <p>Rush Chevrolet Company* Robards Electric Company</p>
<p style="text-align: center;">H</p> <p>A. Hood & Sons Geo. D. Hope Lumber Company**</p>	<p style="text-align: center;">S</p> <p>Sanders-Ridgway Dept. Store** Security Bank and Trust Company** Scott-Livingston* Stevens Marinello Shop</p>
<p style="text-align: center;">Y</p> <p>Younger's Studio**</p>	<p style="text-align: center;">W</p> <p>Joe Weir, County Supt. of Schools D. T. Watters, Sheriff</p>

*** Equivalent to one full page of advertising.

** Equivalent to one-half page of advertising.

* Equivalent to one-fourth page of advertising.

No Star, Equivalent to less than one-fourth page of advertising.

Constantly Searching



FOR centuries astronomers have looked into the skies searching for new worlds, constellations and stars. Aside from their interesting research work, they have learned much that is of practical scientific value.

Similarly, in the field of student publications, the Indianapolis Engraving Company searches constantly for new ideas, plans and methods that will assist year-book staffs to publish successfully books characteristic of their school and community. The results of these efforts are gratifying.

The Annual Planning and Designing Department welcomes your inquiries for further information.

Established 1895

INDIANAPOLIS ENGRAVING COMPANY

Department of Annual Planning and Designing

INDIANAPOLIS, INDIANA

The O. T. Dixon Printing
and Stationery Co.

PRINTING

AND OFFICE SUPPLIES



GIFTS

and Greeting Cards



Dixon's Miami Flower Shop

FLOWERS

FOR ANY OCCASION

MIAMI,

OKLAHOMA



NEO dedicates garden to former president

The garden entrance to the Library Administration Building at Northeastern Oklahoma A&M College has been named in honor of former NEO president Dr. Jerry Carroll and his wife, Jan. NEO A&M College held a dedication ceremony for the event, which was attended by the Carrolls, who did not know in advance of the honor that was being bestowed upon them both.

The moment a royal blue cloth hanging along the garden wall was lifted to reveal the lettering beneath it was described by Jerry Carroll, now president at Oklahoma State University-Oklahoma City, as the highest honor of his professional career.

"I can't even think of enough adjectives to really describe our feelings," said Jerry Carroll. "It was such a meaningful event. It will influence Jan and me for the rest of our lives."

NEO A&M College held a dedication ceremony on October 23 that was attended by the NEO community and members of the Board of Regents for the Oklahoma Agricultural and Mechanical Colleges. During the ceremony, Dr. Jeffrey Hale, NEO president, declared the spot the Dr. Jerry and Jan Carroll Presidential Garden.

"This entryway is viewed as the front door to our campus, so it is fitting that it be named in honor of two individuals who did so much to strengthen what lay beyond that door," said Dr. Jeffrey Hale, NEO president.

During the dedication, Hale and Calvin Anthony, chairman of the Board of Regents, highlighted the impact that the Carrolls' leadership had on the college. From 1993 until 1997, Carroll was the thirteenth president at NEO A&M.



Under Carroll's guidance, NEO expanded its academic programs and became one of the first institutions in the state to create a media studio. He guided the college to a 10-year full accreditation by the Higher Learning Commission. Carroll was also instrumental in the establishment of NEO's Grove campus, which opened its doors in 1998.

Jan Carroll was an avid supporter of the college who was active in NEO Women, a campus organization. She often welcomed NEO students, staff, and faculty and the Miami community into her home for celebrations.

"The five years that we spent there were the best professional years that Jan and I both have had," said Carroll. "We enjoyed not only the faculty and staff but the community. That is an outstanding community made up of people who are the salt of the earth. In our opinion, We made friends there that will last a lifetime."

In the months since July, the Dr. Jerry and Jan Carroll Presidential Garden has been given a makeover by J.P. Malocsy, a Miami gardener. Malocsy said its transformation will be on-going.





NEO A&M College Archive Collection

The Viking – the NEO A&M College Yearbook

Digital copies of The Viking, Northeastern Oklahoma A&M College's annual yearbook, are available in .pdf format on the NEO website for non-commercial purposes only. Scans were created using the best available editions; where stains, color-fading, and contributed marks (usually signatures) were visible on the original they also appear in the digital copy. The edge of some pages in oversized editions may be partially lost due to width limitations on the scanning bed. NEO yearbook editions that do not appear on the website are not part of the collection at present. If you would like to donate a yearbook, please contact the NEO Library.