

THE
JAY SEER

MAY

NED.
JIB.

1929

R
378
Ok4j
1929

378
OK4j
1929

4783



LEARNING RESOURCES CENTER
NEO A&M COLLEGE
Miami, Oklahoma 74354

Northeastern Oklahoma Junior College
Miami, Oklahoma

Northeastern Oklahoma Junior College
Miami

MARY WYNNE, Editor
BURKE TUTHILL, Business Manager

THE O. T. DIXON PRINTING AND
STATIONERY CO.
MIAMI, OKLAHOMA

378
OK4;
1929

4783



1929
JAY SEER

Published under the auspices
of the
STUDENT COUNCIL
NORTHEASTERN OKLAHOMA JUNIOR COLLEGE
Miami, Oklahoma
Vol. IV



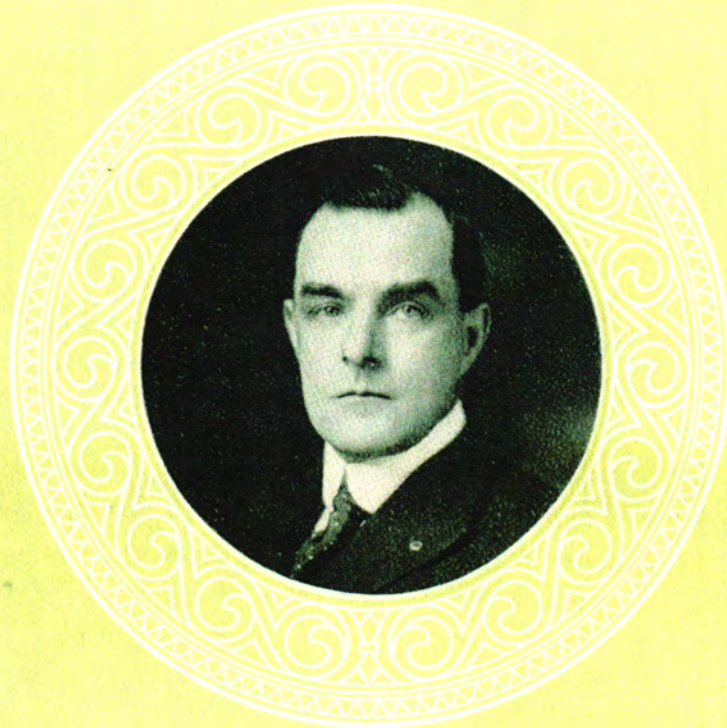
FOREWORD

May this volume reflect through all the years to come the personalities and achievements of our friends—The Jayseers!



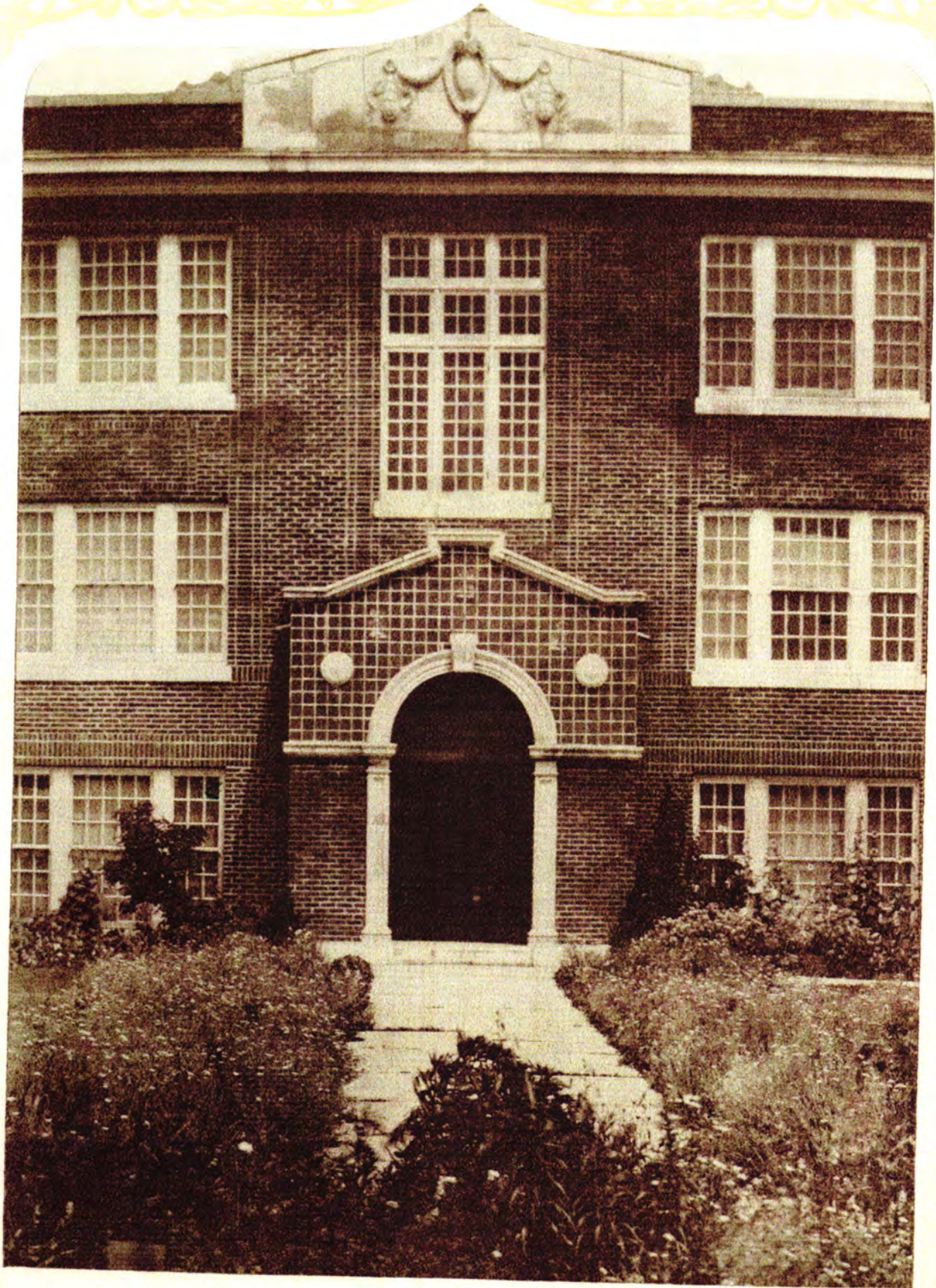
CONTENTS

The SCHOOL
ACTIVITIES
ATHLETICS
ORGANIZATIONS
QUIRKS

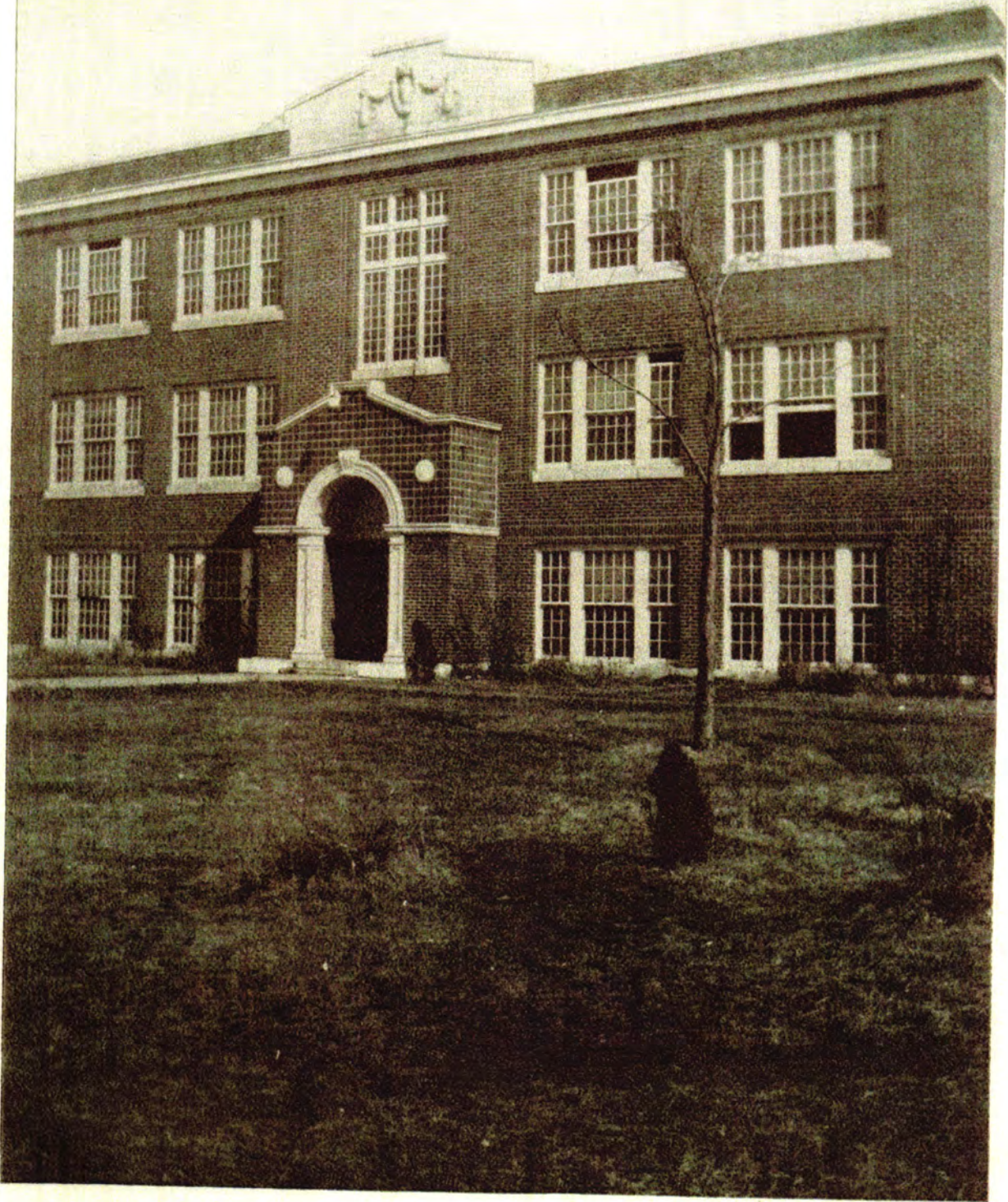


DEDICATION

To Ralph J. Tuthill, secretary of the Board of Regents, who has been largely responsible for the establishment, continuation, and growth of the Northeastern Oklahoma Junior College.



ADMINISTRATION



WEST ENTRANCE



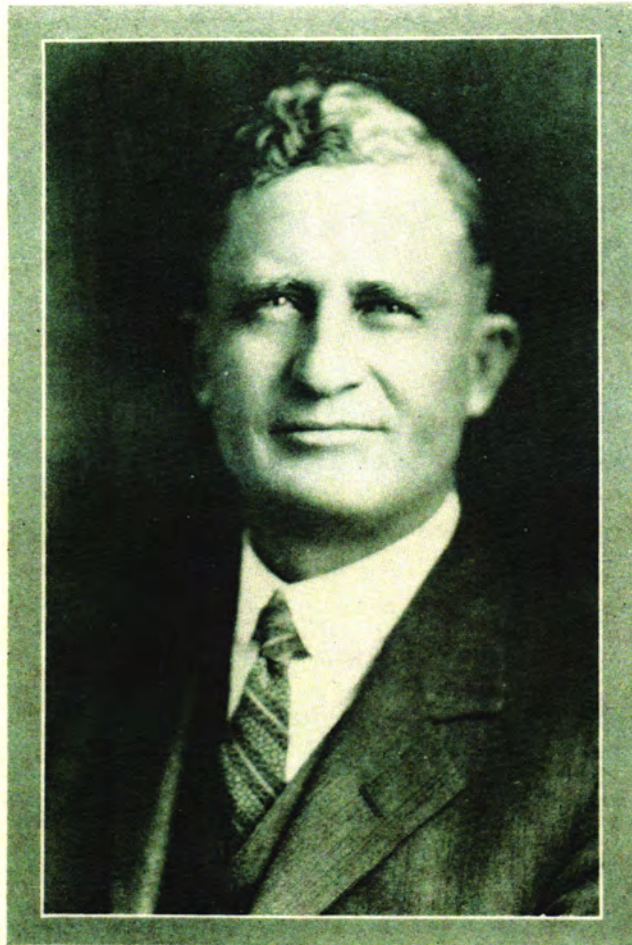
The SCHOOL



ADMINISTRATION

BOARD OF REGENTS

- JOHN VAUGHN, President
Oklahoma City, Okla.
- W. M. MALONE, Vice-President
Vinita, Oklahoma
- SAM. F. WILKINSON
Nowata, Oklahoma
- R. J. TUTHILL, Secretary
Miami, Oklahoma
- W. D. GIBSON
Grove, Oklahoma



Education is for life and not for school, for use and not ornament alone, for better and higher living and not for display. It requires earnest and conscientious effort on the part of students and faculty. It elevates by training and refining; it is the advance guard of civilization.

We are doing our best as an institution to assist in this great work. It is our aim to promote education and the ideals of a higher and better life. We appreciate the co-operation and effort of faculty and students.

We would also greet and acknowledge the encouragement and help of friends who have at all times given us their loyalty and support. We hope to so conduct our school as to merit the well wishes and commendations of the community and of our State.

M. R. FLOYD, President.



The junior college is now recognized as a definite integral part of the American plan of public education. When the Miami school was established there were few of its kind anywhere throughout the land. Now the country is covered with thousands of state and public school institutions doing the first two years of college work. N. E. O. J. C. may therefore be regarded as a pioneer in this field. We are proud to say that the school has served the State and more especially its local community efficiently and well during its brief career.

With membership in full standing in the North Central Association of Colleges and Secondary Schools and library and laboratory facilities superior to most similar institutions there is every reason to believe that this school will render the citizens of Northeast Oklahoma a service which, with the coming years, will be of distinct value in the molding of our state and national life.

LLOYD B. DRAKE, Dean.



FACULTY

Faye Vann ----- French and Latin

A. B., University of Oklahoma; A. M., Oklahoma University. Principal Fairland High School. Instructor High School, Vinita, Okla.; Northeastern Oklahoma Junior College, 1924.

W. R. Parker ----- Director of Orchestra

Director of the 2nd Missouri Infantry Band, World War. Director of the 311th Cavalry Band, World War. Director of the 67th Field Artillery Band, World War. Director of H. S. and City Bands, Okmulgee, Oklahoma.

Bessie Herrin ----- Spanish and Public Speaking

A. B., Oklahoma University; A. M., Oklahoma University; graduate work University of Mexico; Instructor in Spanish, Britton, Oklahoma; Principal Luther High School; Instructor, Northeastern Oklahoma Junior College, 1927.

Bertha Garlock ----- Home Economics

B. S., Oklahoma A. & M.; M. S., Oklahoma A. & M.; Head of Home Economics Department, Clarendon College, Clarendon, Texas; Arizona State Teachers College, Flagstaff, Arizona.

Floyd (Spike) Murphy ----- Athletics, Ass't in Science

A. B., University of Tulsa; Athletic Director of Nowata High School, 1927-28; Athletic Director, Northeastern Oklahoma Junior College, 1928.



FACULTY

Clay DeFord -----English

Pd. B., State Normal, Warrensburg, Missouri; A. M., University of Chicago; Superintendent of Schools, Chelsea, Oklahoma; Instructor in Northeastern State Teachers College, Tahlequah; Instructor in Northeastern Oklahoma Junior College, 1926.

Henrietta Moore -----History

A. B., University of Arkansas; Instructor in History and English, Westville, Oklahoma; Instructor in History, Miami High School; Instructor in History, Vinita High School; Instructor in History, Northeastern Oklahoma Junior College, 1926.

J. B. Steed -----Education and Agriculture

B. S. in Education, University of Missouri; M. S. in Education, University of Oklahoma; High School Principal; Superintendent of Schools in Oklahoma; Instructor in Education and Agriculture, Northeastern Oklahoma Junior College, 1924.

Beulah Parker -----Music

Southwest Baptist College, Bolivar, Mo.; Cincinnati Conservatory of Music; Instructor of Music, Southwest Baptist College; Instructor in Music, Northeastern Oklahoma Junior College, 1925.

C. S. Whitney -----Mathematics

A. B., A. M., University of Oklahoma; teaching fellow in Mathematics, University of Oklahoma; Superintendent of Schools, Kingston, Oklahoma; Instructor in Mathematics and Economics, Miami School of Mines; Instructor in Mathematics and Economics, Northeastern Oklahoma Junior College, 1924.

STUDENT COUNCIL



Jimmie Tedrow, President
Helen Lohmann, Secretary and Treasurer

MEMBERS

Sophomores

Virginia Jones
Loretta Riddle
Jimmie Tedrow
Clarence Martin

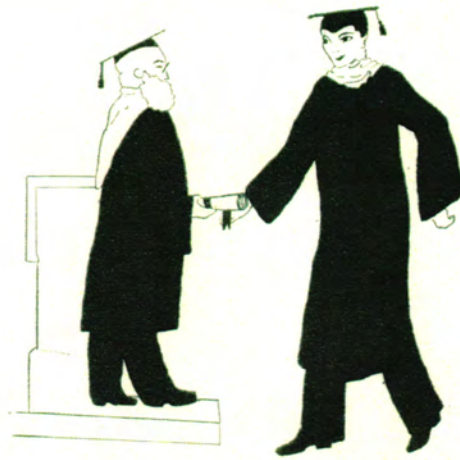
Freshmen

Helen Lohmann
Helen La Grone
Charles Chesnut
Paul Sizemore

Faculty Members

Mr. Clay DeFord
Miss Bertha Garlock
Miss Bessie Herrin
Mr. J. B. Steed





SOPHOMORES

SOPHOMORES



ARTHUR HALL, Miami
Iota Sigma Tau
Pres. of Soph. Class
"The Empty House"
"Step On It"

VIRGINIA JONES, Picher
Phi Theta Kappa
Eta Upsilon Gamma
Pan Hellenic
Y. W. C. A.
Student Council
Kampus Kats
"Step On It"

JENNIE BERRY, Picher
Eta Upsilon Gamma
Pan Hellenic
Y. W. C. A.
Sec.-Treas. of Soph. Class
Annual Staff
Kampus Kats

ERNEST BENSCH, Miami
Iota Sigma Tau
Annual Staff

HARRIET BOTTS, Miami
Phi Theta Kappa

HAZEL CAMPBELL, Miami
Phi Theta Kappa
Y. W. C. A.
Annual Staff
Kampus Kats
Glee Club

NOEL CONRAD, Miami
Iota Sigma Tau

LYLE CUNNINGHAM, Miami
Iota Sigma Tau
Annual Staff
Football
Glee Club
Orchestra

SOPHOMORES

MRS. LYDIA ENIX, Miami

REAVIS FOSTER, Vinita

RAY HARP, Commerce
Iota Sigma Tau
Glee Club

JOE HENBEST, Baxter Springs, Kas.
Iota Sigma Tau
Debating Club
Orchestra

LORA HOWARD, Seneca, Mo.
Y. W. C. A.

MADELYN HOBBS, Miami

LOUISE JOHNSON, Miami
Kampus Kats
Y. W. C. A.

ALFRED LEE, Miami
L. D. B.



SOPHOMORES



WILLO LEFFLER, Picher
 Eta Upsilon Gamma
 Y. W. C. A.
 Kampus Kats

JUANITA LEONARD, N. Miami
 Phi Theta Kappa
 Y. W. C. A.
 Annual Staff

ALMA LEE LONDON, Miami
 Sigma Iota Chi
 Pan Hellenic
 Annual Staff

GLADYS LUNDY, Wyandotte
 Phi Theta Kappa
 Eta Upsilon Gamma
 Y. W. C. A.
 Annual Staff
 Kampus Kats
 "Step On It"
 Glee Club

ORVILLE McCracken, Miami
 L. D. B.

WILLIAM McCULLOUGH, Miami
 L. D. B.
 Football
 "Step On It"

CLARENCE MARTIN, Vinita
 Phi Theta Kappa
 L. D. B.
 "Step On It"
 Student Council

CAROL MITCHELSON, Commerce
 Eta Upsilon Gamma
 Y. W. C. A.
 Kampus Kats

SOPHOMORES

NEVA LEE NEFF, Miami
Sigma Iota Chi
Pan Hellenic
"The Empty House"

NELLE NEWPORT, Miami
Y. W. C. A.

WRAY PAINE, Miami
Football
Basketball
Glee Club
L. D. B.

EMERSON PRICE, Fairland
Phi Theta Kappa
L. D. B.
Annual Staff
Football
Basketball
"Step On It"

LOLA RECORDS, Seneca, Mo.
Phi Theta Kappa

LORETTA RIDDLE, Miami
Eta Upsilon Gamma
Y. W. C. A.
Student Council
Kampus Kats
Glee Club

NANCY RHOADES, Miami
Eta Upsilon Gamma
Y. W. C. A.

ALTA ROWLEY, Fairland
Phi Theta Kappa



SOPHOMORES



MURRAY STAAB, Picher
 Iota Sigma Tau
 Annual Staff
 "The Empty House"
 "Step On It"
 Glee Club
 Debating Club

CARL STAMPS, Stella, Mo.
 L. D. B.

EDNA SPARKMAN, Miami
 Y. W. C. A.
 Kampus Kats

MRS. PAUL STARK, Miami
 Phi Theta Kappa

MABEL TEETER, Commerce
 Eta Upsilon Gamma
 Y. W. C. A.
 Kampus Kats

JIMMIE TEDROW, Picher
 Phi Theta Kappa
 Iota Sigma Tau
 Pres. of Student Council
 Football

PAULINE VANATTA, Miami

LORINE VANATTA, Miami

SOPHOMORES

DORRIS VALLEY, Miami
Phi Theta Kappa
Y. W. C. A.

LORETTA WHITE, Miami
Eta Upsilon Gamma
Y. W. C. A.
Kampus Kats

EVA WILSON HOLLIS, Grove
Phi Theta Kappa
Kampus Kats

JANE WORLEY, Miami
Sigma Iota Chi

MARY WYNNE, Miami
Phi Theta Kappa
Sigma Iota Chi
Annual Staff
"The Empty House"

EDITH WRIGHT, Miami
Glee Club

LORENA EADS, Commerce
Y. W. C. A.

ANNA ZAGORTZ, Commerce
Eta Upsilon Gamma
Y. W. C. A.
Kampus Kats



SOPHOMORES

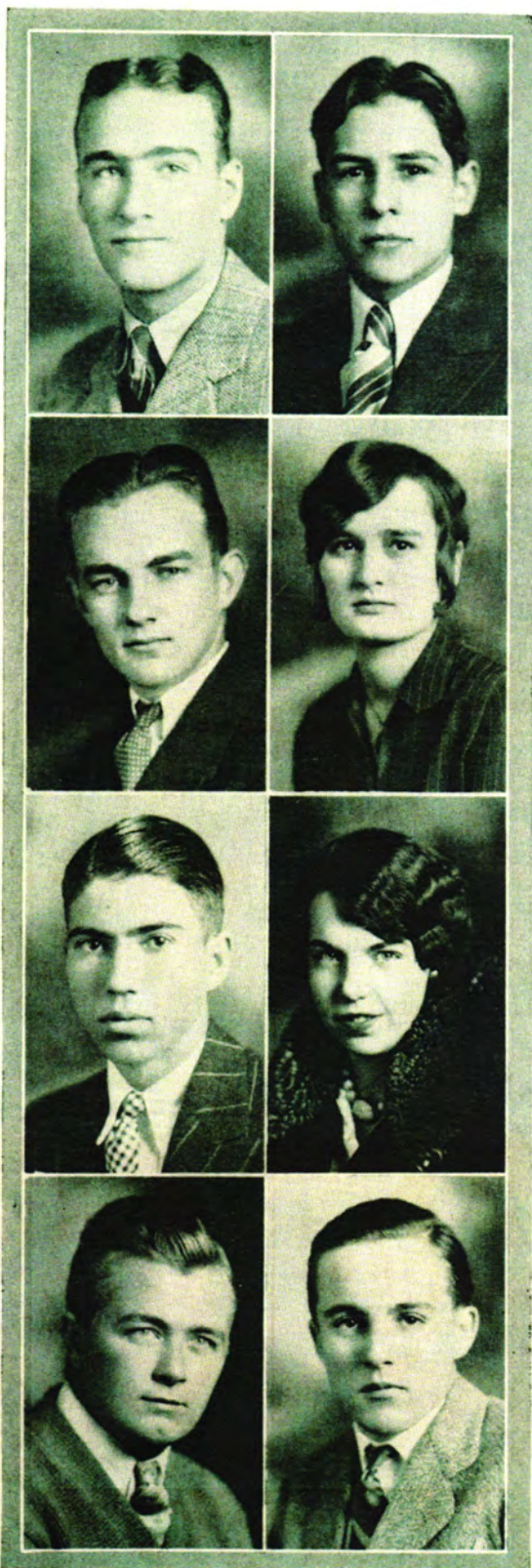
Bensch, Ernest
Conrad, Noel
Cunningham, Lyle
Dunlap, Adrian
Foster, Reavis
Hall, Arthur
Harp, Ray
Henbest, Joe
Huckett, Walter
Lee, Alfred
McCracken, Orville
Martin, Clarence
McCullough, William
Paine, Wray
Price, Emerson
Poteet, William
Staab, Murray
Stamps, Carl
Tedrow, James
Underwood, James
Berry, Jenny
Botts, Harriet
Campbell, Hazel
Eads, Lorena
Enix, Lydia
Goodwin, Erma
Hall, Margie Tunell
Hawthorne, Mildred
Howard, Lora
Johnson, Louise

Jones, Virginia
Leonard, Juanita
Hummel, Glenna
London, Alma Lee
Lundy, Gladys
Mitchelson, Carol
Newport, Nell
Neff, Neva Lee
Records, Lola
Riddle, Loretta
Rhoades, Nancy
Rowley, Alta
Rumsey, Louise
Sparkman, Edna
Smith, Mrs. Ruth
Streeter, Georgia
Teeter, Mable
Valley, Dorris
Vanatta, Pauline
Vanatta, Lorine
White, Loretta
Wilson, Eva
Leffler, Willo
Worley, Jane
Wynne, Mary
Wright, Edith
Zagortz, Anna
Hobbs, Madelyne
Kell, Esther Foster



FRESHMEN

FRESHMEN



CLIFFORD STEVENS, Miami
Class President
Football
L. D. B.
"Step On It"

MAURICE CARSELOWEY, Miami
Vice-Pres. Freshman Class
Iota Sigma Tau
"The Empty House"

BURKE TUTHILL, Miami
Sec'y.-Treas of Freshman Class
Annual Staff
Iota Sigma Tau
"The Empty House"

BEA AUSTIN, Gravette, Ark.
Phi Theta Kappa

DON AULT, Picher

DOROTHY BARTLETT, Miami
Kampus Kats

RAYMOND BEATY, Miami
L. D. B.

DENNIS BEAUCHAMP, Grove

FRESHMEN

VIRGINIA BISSELL, Miami
Orchestra
Sigma Iota Chi
Kampus Kats
Glee Club

GOLDA BURCH, Miami

LOREANA BOTTS, Miami

ELAINE BOSWELL, Miami
Annual Staff

JEAN BIGHAM, Miami
Glee Club
Orchestra
Kampus Kats
Sigma Iota Chi

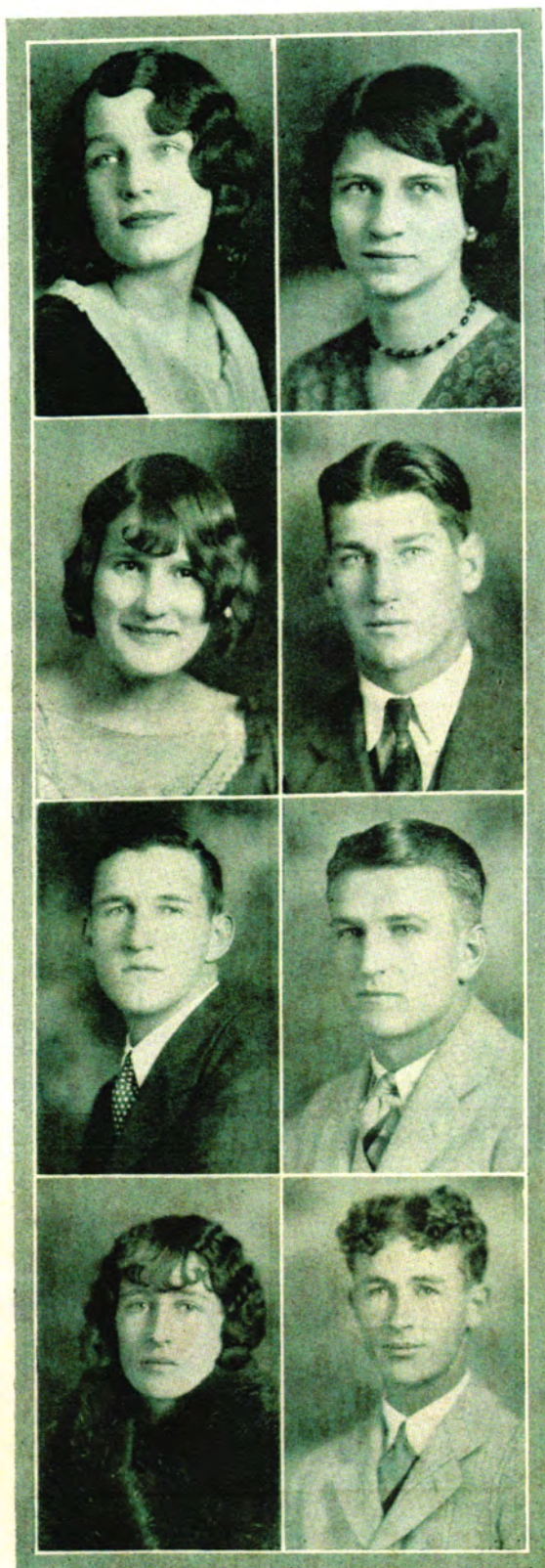
FERN BRANSTETTER, Miami
Kampus Kats
Y. W. C. A.

COURTNEY CALDWELL, Commerce

MRS. CRYSTAL BAIRD, Picher
Y. W. C. A.
Kampus Kats
Phi Theta Kappa



FRESHMEN



MARIAN CAMERON, Miami
 "The Empty House"
 Phi Theta Kappa
 Annual Staff
 Eta Upsilon Gamma
 Y. W. C. A.
 "Step On It"
 Kampus Kats

MILDRED CALHOUN, Miami
 Y. W. C. A.

IRENE CASTLE, Miami
 Kampus Kats

WAYNE CHAMBERS, Commerce
 Football
 Basketball

CHARLES CHESTNUT, Commerce
 Football
 Basketball
 Student Council

RAYMOND CLABAUGH, Picher
 Football

LILLIAN CLARRY, Commerce
 Kampus Kats
 Y. W. C. A.
 Eta Upsilon Gamma

EVERETT CLARRY, Commerce
 Basketball
 Football
 Annual Staff

FRESHMEN

ARDIS MAURINE COBBAN, Miami
 "The Empty House"
 Kampus Kats
 "Step On It"
 Y. W. C. A.
 Eta Upsilon Gamma
 Glee Club

HELEN COOK, Miami
 Annual Staff

LELAND COTTER, Miami
 Glee Club
 Iota Sigma Tau

RUTH CRICKARD, Miami
 Kampus Kats
 Y. W. C. A.
 Eta Upsilon Gamma

BEULAH CROSS, Quapaw
 Sigma Iota Chi

THELMA DeMIER, Miami
 Kampus Kats
 Y. W. C. A.
 Eta Upsilon Gamma
 Glee Club

NAOMI DOTY, Miami
 Kampus Kats

DICK ELLIS, Miami



FRESHMEN



OPAL EVANS, Wyandotte
Y. W. C. A.

JUANITA FAUST, Bluejacket
Kampus Kats

EUNICE FINKE, Miami
Kampus Kats
Y. W. C. A.
Phi Theta Kappa

BEULAH FOSTER, Claremore
Kampus Kats
Y. W. C. A.

EDWARD FOSTER, Miami
Iota Sigma Tau

LAURA GILSTRAP, Miami
Kampus Kats
Y. W. C. A.
Phi Theta Kappa

ESA GREGORY, Quapaw
Y. W. C. A.

CHARLES GRISHAM, Hockerville
Phi Theta Kappa

FRESHMEN

HUGH HALL, Miami

WALTER HEASLET, Miami

AMANDA HUTSON, Commerce
Annual Staff
Debating Club
Kampus Kats
Y. W. C. A.

WALTER JENKINS, Miami
Football
L. D. B.

HALLIE JONES, Miami
"The Empty House"

OPAL KEENER, Cardin

IVA KENNEDY, Quapaw
Kampus Kats

WILLIAM KLINE, Picher
Phi Theta Kappa



FRESHMEN



HELEN LaGRONE, Miami
 "The Empty House"
 Sigma Iota Chi
 Kampus Kats
 Y. W. C. A.
 Student Council

HELEN LOHMANN, Miami
 "The Empty House"
 Sigma Iota Chi
 Kampus Kats
 Student Council
 Y. W. C. A.

LEONA LINK, Stella, Mo.
 Kampus Kats
 Y. W. C. A.
 Phi Theta Kappa

ENID MONTGOMERY, Miami

ILA GRACE McCracken, Miami
 Eta Upsilon Gamma
 Y. W. C. A.
 Kampus Kats

WILLIAM McMURTREY, Stella, Mo.
 Orchestra

IRENE PACE, Gravette, Ark.

RUBY PRATT, Commerce
 "The Empty House"
 Y. W. C. A.

FRESHMEN

PEARL PRINE, Seneca, Mo.

ISABEL PURYEAR, Seneca, Mo.
Y. W. C. A.
Kampus Kats

RUTH RADCLIFFE, Galena, Kas.

RUSSELL RENFROW, Miami

MARY ELIZABETH ROBERTS,
Kampus Kats Miami
Y. W. C. A.
Debating Club
Annual Staff

MARY LOU ROBERTSON, Cardin
Kampus Kats

HAROLD RUST, Afton
Iota Sigma Tau

LORENE SHERWOOD, Seneca, Mo.
Y. W. C. A.



FRESHMEN



PAUL SIZEMORE, McGehee, Ark.
Student Council
Glee Club
Iota Sigma Tau

ALBERT STEWART, Commerce

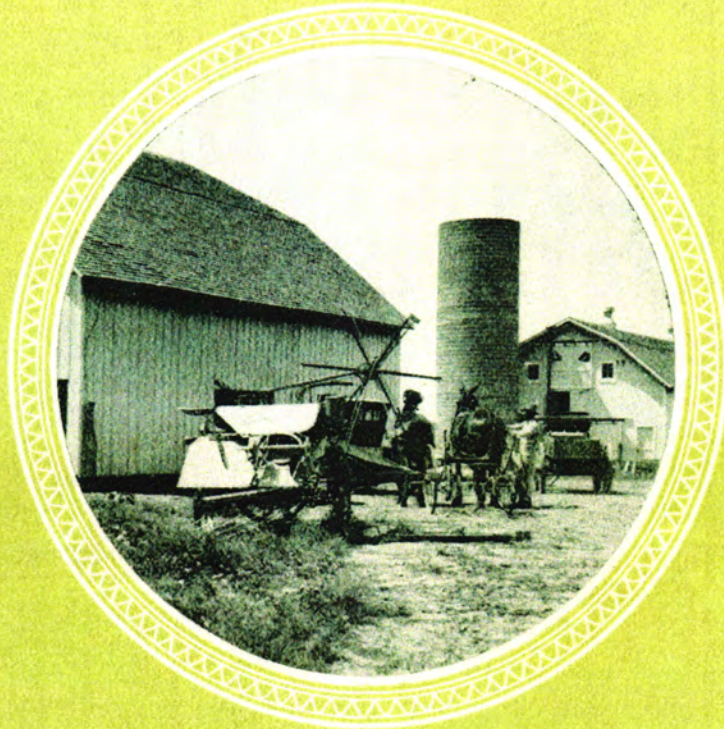
MORRIS TUCKER, Afton
Phi Theta Kappa

BERNICE UTO, Miami

CLARA WILES, Miami

BYRON WYATT, Miami

LUCILLE WILLIAMS, Miami
Sigma Iota Chi
Kampus Kats
Glee Club
Y. W. C. A.



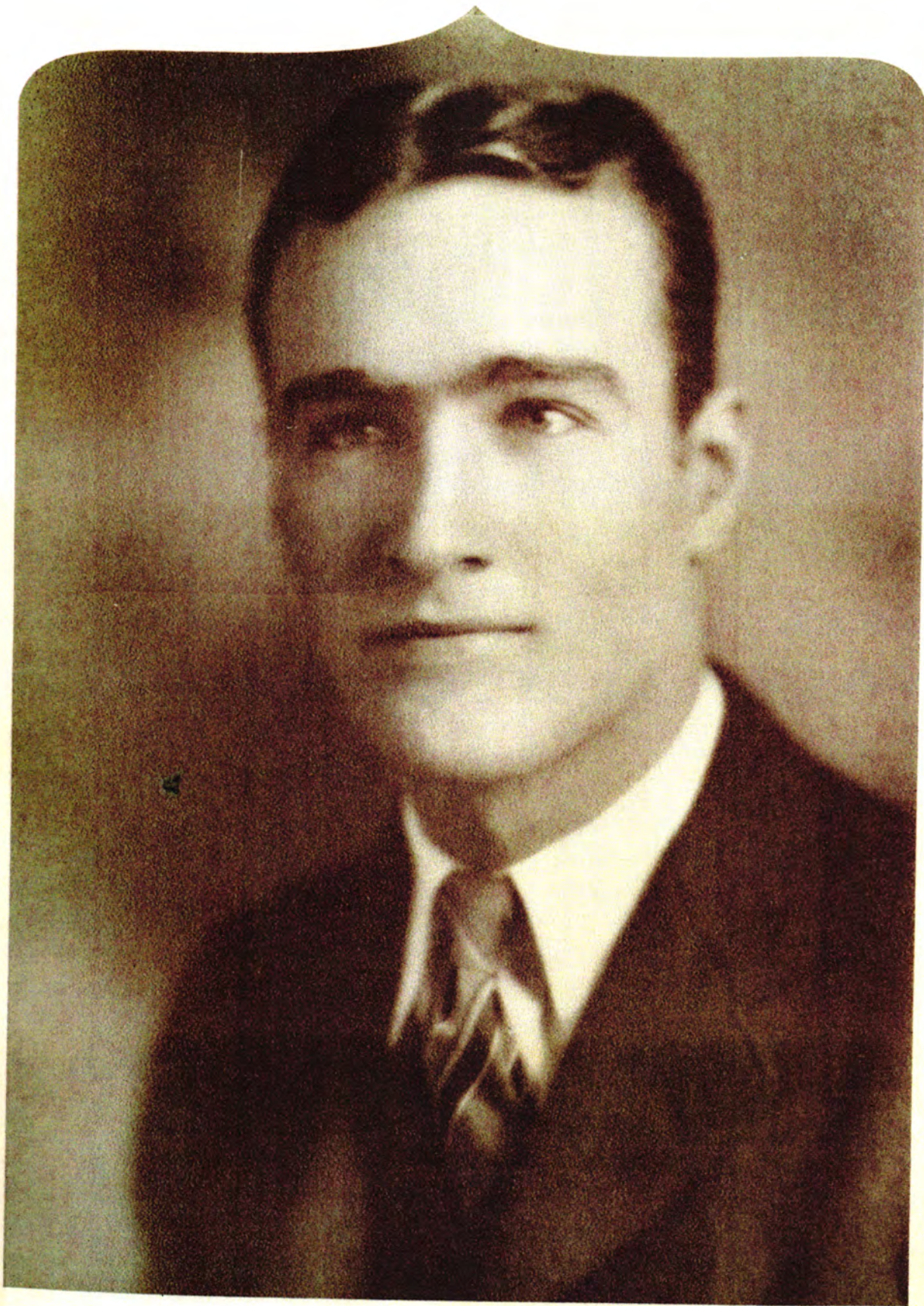
ACTIVITIES



MARY LOU ROBERTSON—HUGH HALL
RAT DAY RULERS



ARDIS MAURINE COBBAN—CAMPUS QUEEN



CLIFFORD STEVENS—CAMPUS KING





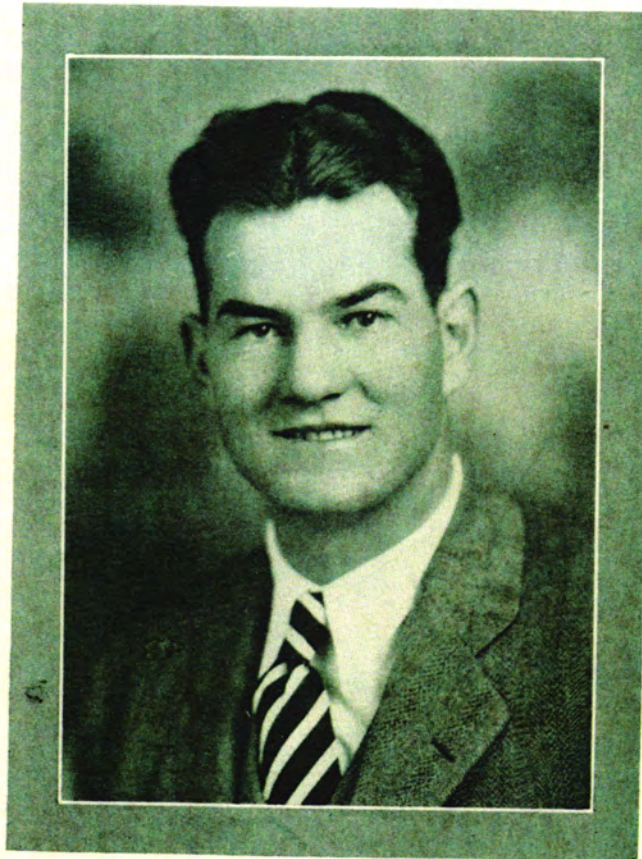








ATHLETICS



FLOYD (SPIKE) MURPHY
Coach

Northeastern Oklahoma Junior College is indeed fortunate in having Floyd "Spike" Murphy, four year letter man on the Tulsa University Varsity squad, as head coach of Jayseer athletics. The enviable record made this year is due principally to his skill, and untiring efforts to develop teams that would creditably represent the college at all times.



JENNIE BERRY
Football Queen

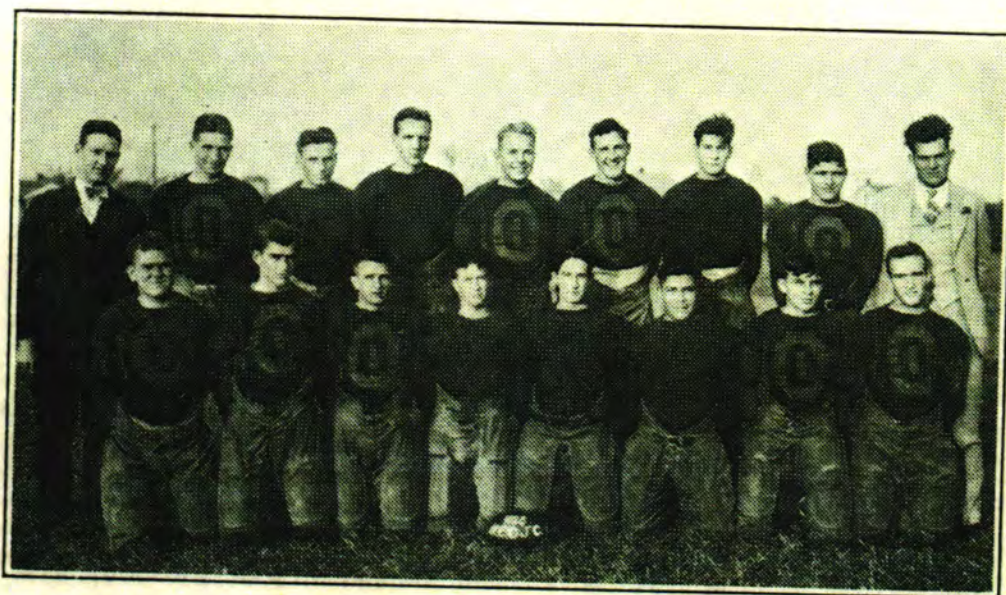
FOOTBALL

Future sport chroniclers delving back into the history of Jayseer football teams will find that the record established by the 1928 gridiron warriors surpassed all previous years. Although beaten, by a narrow margin, by the Arkansas University freshman squad and the Kansas State Teachers College reserve eleven, the Blue and Gold vanquished every Junior College foe of the year. Fans and school officials alike have agreed that the title "all-victorious", should be applied, for the team was unbeaten in its class.

The driving pigskin battalion turned out by Coach Floyd (Spike) Murphy was built around only a few letter men of the previous year and an abundance of new and willing material from high schools of the surrounding district. Using the older and experienced sophomores as pivot men the husky mentor from Tulsa University molded a squad well balanced as to offense and defense and succeeded in attaining the most successful year for the N. E. O. J. C. in regard to punts, passes, yards and touchdowns.

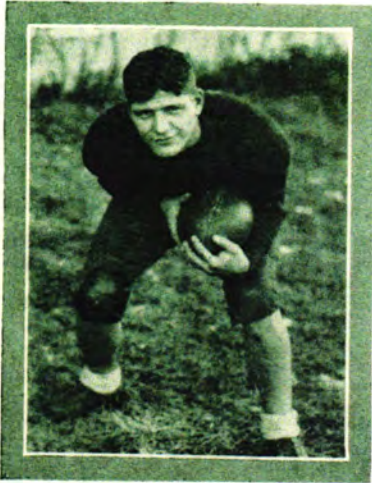
Plenty of hard drill was the first number on the Murphy program for the Jayseer squad in September and the second act in which the team took part consisted of signals and plays. Spiking, tackling, blocking and running with the ball were the passports to the first string positions, and the whole squad entered into the competition with a determination which produced results.

The Ozark Wesleyan Lions at Carthage, Mo., ancient rivals of the local gridmen, were overcome 6 to 0 in an epic battle that opened the season for the Jayseer team, and incidentally provided the most thrills and hardest opposition of any team the Murphymen defeated. The victory on the Missouriians' own field marked the second time in the history of athletic relations between the two schools that the Lions took the short end of the score. In 1925, Paul Williams' squad turned back the Wesleyans 6 to 0 on the local gridiron.



Standing (left to right)—Dr. Chestnut, A. Dunlap, D. McDonald, F. Bachmann, L. Cunningham, C. Chestnut, W. Chambers, E. Price, Spike Murphy, coach.
Sitting (left to right)—W. McCullough, W. Paine, C. Clabaugh, E. Clarry, J. Tedrow, J. Fox, H. Sapp, C. Stevens.

FOOTBALL



E. PRICE
Fullback, Captain

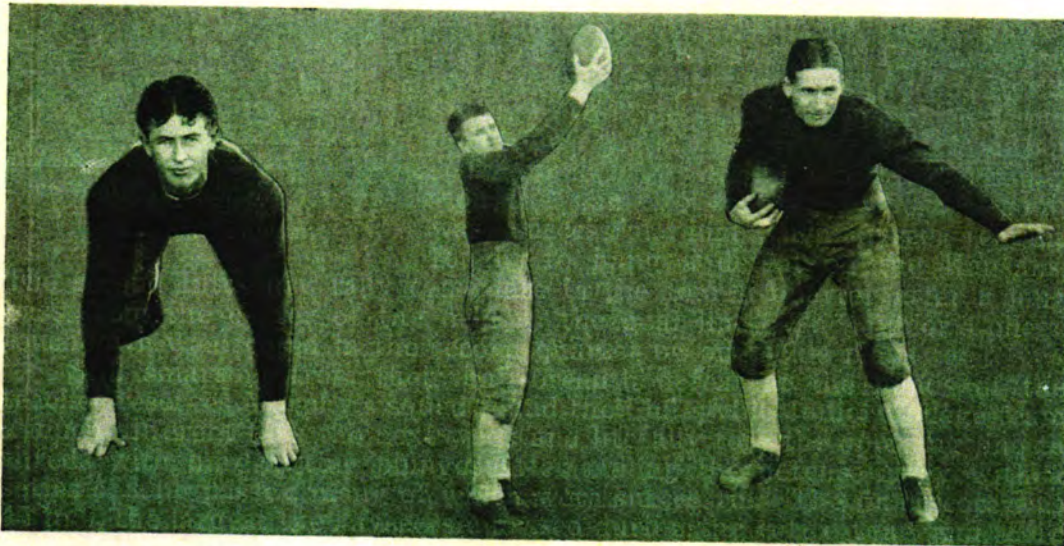
The lone score for the Blue and Gold came in the third period after the two elevens had see-sawed across the field in a deadlock for the first half of the contest. Strive as they did, the Lion crew could not duplicate the Jayseer touchdown, and when the smoke of battle had cleared, the pride of Northeastern Oklahoma had tallied the first of a long string of victories.

The first home game of the season of '28 went to the Kansas State Teachers College reserves of Pittsburg, 12 to 6, after a struggle which left the outcome a matter of doubt until the last second of play. Another score would have tied the count and possibly won the game if the try for extra point was successful, and the Jayseer engine fought to hang a defeat on the Kansans.

The second Pittsburg tally came late in the fourth quarter after a long pass from the center of the field to the goal line. The Junior College touchdown was scored in the second quarter on off-tackle plays.

Still smarting from their hair-breadth defeat at the hands of the teacher reserves Murphy's squad found the Coffeyville Junior College team a much different task the next week and literally tore the opposing line to shreds with hard-hitting plunges after pulling the defense away with a series of long passes, many of which were successful. The final score was 45 to 0, the largest the Jayseers amassed during the entire year, and a big boost toward the 145 point season total the Junior College scored while holding its opponents to 49 counters.

Southwest Baptist College at Bolivar fared little better than Coffeyville when the Jayseers invaded that domain for the fourth game of the



E. CLARRY
End

R. CLABAUGH
Halfback

A. DUNLAP
Quarterback

FOOTBALL

year and the final whistle saw the Miami crew leading 27 to 0. Notwithstanding the four touchdowns, however, the Missouri squad was stubborn and fought to the last ditch, futilely, against the mid-season onslaught of the Oklahomans.

One more reverse was to be tallied against the Blue and Gold clad gridiron army, however, before the curtain came down on the football season, and that reverse was destined to be handed out by the Arkansas Razorbacks freshmen, a team picked from a squad of more than 100 aspirants to the A. U. football machine. Holding the Pigs to 25 points the Miami crew drew the applause of football critics both here and abroad for that was the smallest score by which the "frosch" had ever beaten the Junior College, and they had a remarkably strong team.

"Beat Bacone" was a war cry that rang out in the Northeastern Oklahoma Junior College in the days of its infancy, and the same war cry pealed forth during the season of '28 as the Jayseers outplayed the Indians for their third straight victory and a 27 to 7 triumph. The contest also placed the Jayseers well up among the claimants for the state Junior College title as Bacone led the conference, to which the local school does not belong.

Another championship could easily have been claimed after the following week when the Parsons Junior College, unbeaten in the Kansas Junior College league, fell before the local gridsters 33 to 6 in a game that never was in doubt as to the outcome. It was the first time the teams of the two schools had ever clashed, although they have often played other



W. CHAMBERS
Right End, Captain-Elect



W. JENKINS
Guard

"SPIKE" MURPHY
Coach

W. McCULLOUGH
Center

FOOTBALL

schools in common. The Parsons fray closed the football season, all-victorious in the Junior College class, and with three times the score of their opponents.

Eight of the sixteen letter men of '28 will leave the Northeastern Junior College by graduation before the season of '29, and eight of them have promised to return in an effort to build another great team. "Spike" Murphy already has his eyes turned toward promising high school stars and another fine eleven.

The men who will never wear a Blue and Gold uniform again are Captain Em Price, Adrian Dunlap, Pete McCullough, Lyle Cunningham, Walter Underwood, Franz Bachmann, Wray Paine and James Tedrow.

The season's record—

Jayseers	6	Ozark Wesleyan	0
Jayseers	6	Pittsburg	12
Jayseers	45	Coffeyville	0
Jayseers	27	Bolivar Baptists	0
Jayseers	0	Razorbacks	25
Jayseers	28	Bacone	6
Jayseers	33	Parsons	6
	Total	145	49



J. TEDROW
End

C. CHESTNUT
Tackle

W. PAINE
End

FOOTBALL

The trips which the football men and their supporters have made this past year have been more than just journeys, they have been the source of some of the best yarns of the year. Unfortunately most of them were jealously kept within the team but a few of them have leaked out.

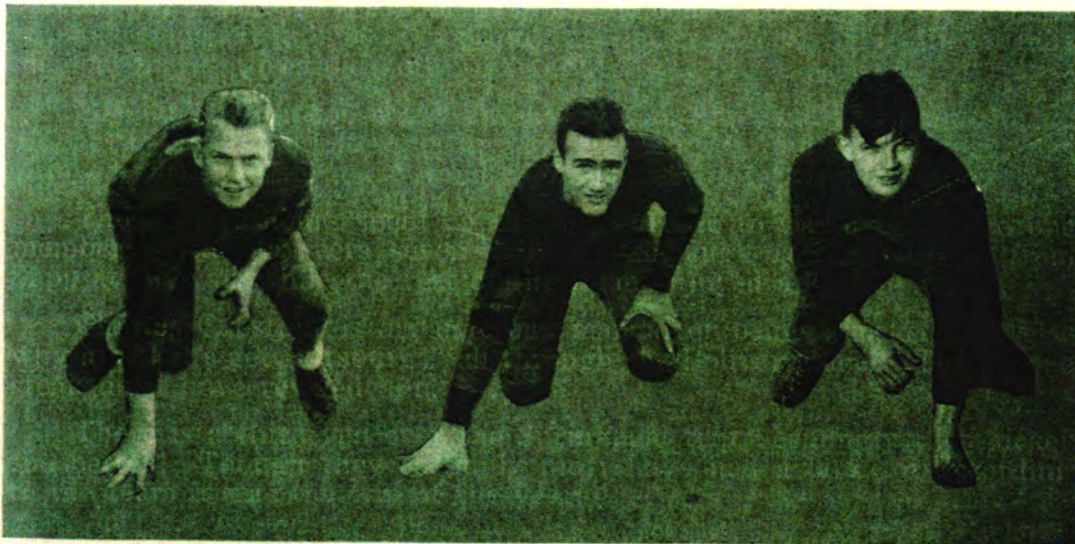
The Kappas from Arkansas must have thought something was funny when the three Beau Brummels from Northeastern Oklahoma Junior College told their names—Paine, Angel and Sapp. But then the four records purchased for the price of a single "coke" probably soothed them. "Spike" evidently wasn't so soothing at eleven o'clock, or so the angelic member of the three musketeers thought.

Of course, Parsons could have won had they had their first team. Maybe their team didn't have the nice T-bone steak and tea that our boys enjoyed, although we understand that "Spike" prefers apple pie.

Those three hours spent on the bus enroute to Carthage netted one member of the Jayseers seven dollars. Clabaugh rather profited from Sapp at Bolivar, while the rest of the team enjoyed a T-bone steak.

Charles Chestnut is a dangerous man after being knocked out, else why his "Let's get Pittsburg!" all through the Bolivar game? The T-bone steak must have revived him.

There is a thick veil over the Springfield trip, seemingly the thicker the better! Though they certainly must have had a lark for according to the team it was the trip of the year.



L. CUNNINGHAM
Tackle

C. STEVENS
End

H. SAPP
Halfback



NEVA LEE NEFF
Basketball Queen

BASKETBALL

Re-entering the basketball lists after a lay-off of several years the Northeastern Oklahoma Junior college squad under the tutelage of Coach Floyd (Spike) Murphy completed a 10-game season with six victories and four defeats in spite of the fact that it was necessary to use the Miami high school court for practice at odd intervals and that a late start was made necessary by the large number of teams using the court.

Opening the season here with the Wyandotte Merchants, Murphy's men appeared to be on the winning end but a late rally put the Wyandotte crew over with a long basket that won the game 18 to 16. Training hard, the Jayseer squad was far from being downed, however, and came back in the following game to trounce the ancient foe of all good Jayseers, Oklahoma Military Academy, by a 36 to 10 count. The Claremore team was completely outplayed by the Gold and Blue.



Left to right—W. Paine, Guard; C. Chestnut, Guard; A. Dunlap, Forward; W. Chambers, Center; B. Frisby, Guard; E. Price, Guard; H. Sapp, Forward; E. Clarry, Forward.

BASKETBALL

In the next two contests on the gym' courts the Miami squad fell before the Drury College five at Springfield, Mo., 36 to 18, and bowed to the Wesleyan Lions of Carthage 40 to 31 after a long uphill scrap. The last defeat of the basket looping season was chalked against the Junior Collegians when Fort Scott Junior College won a close decision from the local team 33 to 30 on the Miami court.

Taking their stride on the home stretch the Jayseers defeated in succession the Ozark Wesleyan College by a decisive score, the Joplin DeMolay team in a double encounter, the Carterville semi-pro squad and the Picher All-Stars. Murphy's men also triumphed in the District Independent Tournament and won the right to represent Northeast Oklahoma at the Four-State championship contests in Joplin. Five letter men will return for the next season.

The record of basketball—

Jayseers 16	Wyandotte	18
Jayseers 36	O. M. A.	10
Jayseers 18	Drury	36
Jayseers 31	Wesleyan	40
Jayseers 40	Carterville	17
Jayseers 30	Fort Scott	33
Jayseers 42	Picher	12
Jayseers 38	DeMolays	17
Jayseers 20	DeMolays	16
Jayseers 39	Wesleyan	17
	<hr/>	<hr/>
Total	310	209



ORGANIZATIONS

Y. W. C. A.

The purpose of the Young Women's Christian Association is to unite in the desire to realize full and creative life, through a growing knowledge of God, to determine to have a part in making this life possible for all people, and in this task to seek to understand Jesus and follow Him.

The organization is equally divided into four groups—social, membership, service, and program. A faculty member sponsors each group. These groups co-operate to make our organization a success. One of the most delightful hours that we all spent together this year was our recognition service for our new members. The deepened shadows and the lighted candles created a wholesome and spiritual atmosphere which deeply impressed us all. The Y. W. C. A. is open to and welcomes any girl in the college who wishes to share our friendship and good times besides doing her share to carry out the purpose in her life and on our campus.



First Row (left to right)—Garlock, Parker, Vann, Finke, Sparkman, Calhoun, Cameron, Johnson, LaGrone, White, Clarry, Leffler, Mitchelson, Goodwin, Connor, Burch, Leonard, Herrin.

Second Row—Wiles, Howard, Newport, Pace, Austin, DeMier, Rhoades, Vice-President; Berry, Teeters, Williams, Crickard, Valley, Gilstrap, Gregory, Branstetter, Linton, Lohmann.

Third Row—Riddle, Zagortz, Baird, Campbell, Sec'y. and Treas.; Boswell, Roberts, Foster, Puryear, Link, Pratt, Cobban, Lundy, Jones, President.

DEBATING CLUB

The Junior College debating team this year was composed of Hutson and Roberts, affirmative; and Staab and Henbest, negative, with Clay DeFord, coach. Both teams defeated Bacone in a double contest, and won honorable mention at Oklahoma University against Tonkawa. The subject for debate was: Resolved, that The Parliamentary Form of Government of England is Preferable to the Presidential Form of the United States.



STAAB

ROBERTS

HENBEST

HUSTON

KAMPUS KATS

The Kampus Kat pep organization was organized in the school year 1927-28. Its membership includes about forty girls. These girls represent the most peppy and enthusiastic girls of the college. The purpose of the organization is to create pep in the college and at the athletic games, and to promote clean sportsmanship. All the girls co-operate to realize this purpose. They exhibit their pep by giving drills and yells. The costumes add quite an attraction to the group. The past year they wore white skirts and white jerseys trimmed in blue with big blue cats on the front of the jerseys. The organization is sponsored by two faculty instructors. This organization may be joined by any girl because it is the most representative group of the college.



First Row (right to left)—Jones, President; Zagortz, Puryear, Bigham, Crickard, Doty, Berry, Riddle, Branstetter, Williams, Teeters, Story, Goodwin, Sec'y. and Treas.; LaGrone, Vice-Pres.

Second Row—Boswell, Pratt, Link, Faust, Bissell, Castle, Myers, Foster, Johnson, Sparkman, Roberts, Bartlett, White, Clarry.

THE JAYSEER



WYNNE

The members of the 1929 Jay Seer staff have striven to present in this volume a truthful record of the past year at Northeastern Oklahoma Junior College. Our aim has been to build not a bigger but a better annual and we are grateful for the loyal support and willingness to help which our friends and fellow students have shown us. Although hampered, as has been the case for years, by financial difficulties we have done our best to make this annual one that will serve to remind you in a small way of a most happy college year.



First Row (left to right)—Staab, Cobban, Cook, Campbell.
Second Row—Leonard, Berry, Lundy, Clarry.

JAY SEER STAFF



TUTHILL

Mary Wynne	Editor-in-Chief
Marian Cameron	Ass't Editor-in-Chief
Burke Tuthill	Business Manager
Emerson Price	Ass't Business Manager
Jennie Berry	Organization Editor
Alma Lee London	Ass't Organization Editor
Elaine Boswell	Art Editor
Mary Elizabeth Roberts	Ass't Art Editor
Gladys Lundy	Calendar Editor
Lyle Cunningham	Advertising Manager
Ardis Maurine Cobban	Ass't Advertising Manager
Murray Staab	Feature Editor
Ernest Bensch	Ass't Feature Editor
Hazel Campbell	Sophomore Editor
Amanda Hutson	Freshman Editor
Juanita Leonard	Joke Editor
Everett Clarry	Sport Editor
Amanda Hutson and Helen Cook	Stenographers
Clay DeFord and J. B. Steed	Faculty Sponsors



First Row (left to right)—Cunningham, Roberts, Price, Boswell.
Second Row—London, Hutson, Cameron, Bensch.

PAN-HELLENIC COUNCIL

Alma Lee London, President
Jennie Berry, Secretary and Treasurer

MEMBERS

Sigma Iota Chi

Alma Lee London
Neva Lee Neff

Eta Upsilon Gamma

Jennie Berry
Virginia Jones

Faculty Advisors

Mr. C. S. Whitney
Miss Henrietta Moore
Miss Beulah Parker



First Row (left to right)—London, Whitney, Berry.
Second Row—Parker, Jones, Neff, Moore.



FRATERNITIES
and
SORORITIES

FRATERNITIES
and
SORORITIES

PHI THETA KAPPA

N. E. O. J. C. 1926

13 Chapters

OFFICERS

Virginia Jones, President
Clarence Martin, Vice President
Mary Wynne, Secretary and Treasurer

FACULTY ADVISORS

Miss Faye Vann
Mr. C. S. Whitney

HONORARY MEMBER

Mr. M. R. Floyd

ACTIVE MEMBERS

Virginia Jones
Clarence Martin
Mary Wynne
Jimmie Tedrow
Eva Hollis
Emerson Price
Hazel Campbell
Lola Records
Juanita Leonard
Gladys Lundy
Mildred Hawthorne
Dorris Valley
Pauline Grubb
Marian Cameron

Crystal Baird
Charles Grisham
Morris Tucker
Byron Frisbie
Mrs. Pearl Stark
Eunice Finke
Alta Rowley
Harriett Botts
William Kline
Georgia Tipton
Bea Austin
Laura Gilstrap
Leona Link
Irene Chenoweth



LOS DIABLOS BLANCOS

Founded September 25, 1925, N. E. O. J. C.

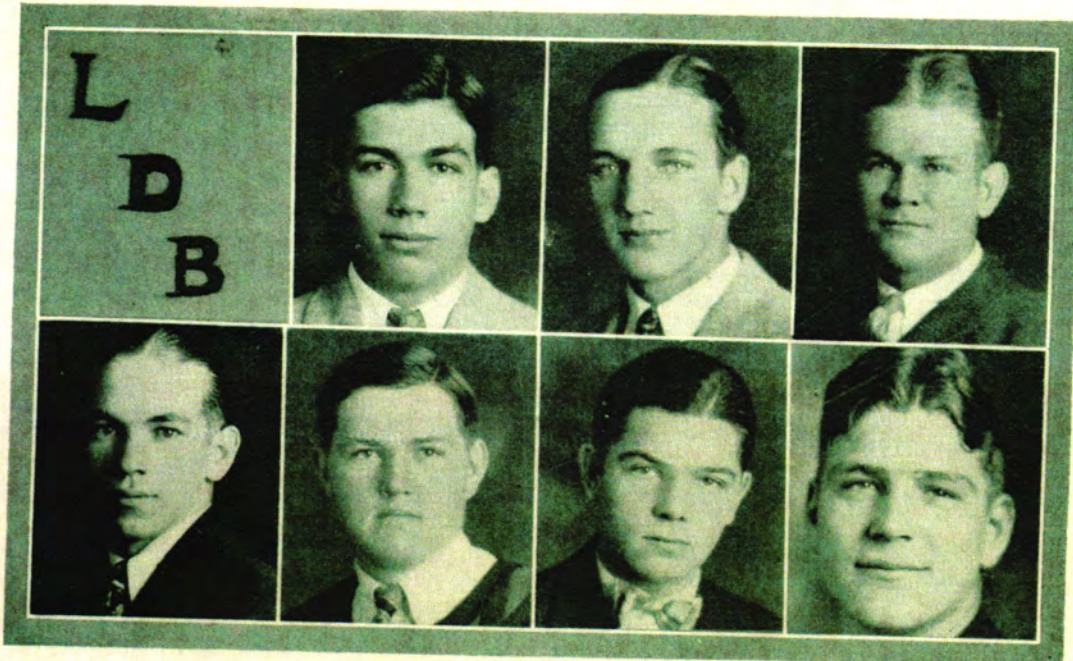
FACULTY ADVISOR

Mr. Floyd Murphy

MEMBERS

Emerson Price
Carl Stamps
Pete McCullough
Franz Bachmann
Walter Hockett
Alfred Lee
Clarence Martin
Orville McCracken

Guardian of the Royal Sink
Worshipful Diablo
Holder of the Golden Key
Protector of the Royal Fowls
Most Beloved Toreador
Pilot of the Golden Ark
Wielder of the Crimson Paddle
Manipulator of the Silver Harp



First row (left to right)—Martin, Bachmann, McCullough.
Second row—Lee, McCracken, Stamps, Price.

SIGMA IOTA CHI

Founded at St. James Xavier, Alexandria, Louisiana, 1901
N. E. O. J. C. Jan. 18, 1928

23 Chapters

FACULTY ADVISOR
Miss Henrietta Moore

PATRONESSES

Mrs. R. W. Skinner
Mrs. J. R. Lane
Mrs. Virgil Cooper

Mrs. Floyd Myers
Mrs. Fred H. Gartung
Mrs. Ella Huntley

Mrs. Vern Thompson

ACTIVE MEMBERS

Alma Lee London
Neva Lee Neff
Jane Worley
Mary Wynne

Helen LaGrone
Helen Lohmann
Virginia Bissell
Beulah Cross

Jean Bigham

PLEDGES

Lucille Williams

Irene Laffoon

Nadine Stephenson



First row (left to right)—London, Wynne, Worley, Neff.
Second row—Bigham, LaGrone, Cross, Bissell, Lohmann.

ETA UPSILON GAMMA

Founded Christian College, Columbia, Missouri, 1901
N. E. O. J. C. Feb. 1, 1928

11 Chapters

FACULTY ADVISOR

Miss Beulah Parker

PATRONESSES

Mrs. George Coleman
Mrs. Herbert Cobban
Mrs. Scott Thompson

Mrs. John Robinson
Mrs. Ralph Tuthill
Miss Nellie Dobson

ACTIVE MEMBERS

Jennie Berry
Virginia Jones
Loretta Riddle
Anna Zagortz
Nancy Rhoades
Loretta White

Ardis Maurine Cobban
Marian Cameron
Ruth Crickard
Thelma DeMier
Gladys Lundy
Willo Leffler

Carol Mitchelson

PLEDGES

Ila Grace McCracken
Mable Teeters

Lillian Clarry
Pauline Grubb



First row (left to right)—Berry, DeMier, Lundy, Cameron, Mitchelson, Crickard.
Second row—Riddle, Jones, Zagortz, Leffler, White, Rhoades, Cobban.

IOTA SIGMA TAU

Founded Jan. 1, 1929, N. E. O. J. C.

FACULTY ADVISOR

Mr. L. B. Drake

ACTIVE MEMBERS

Lyle Cunningham
Jimmie Tedrow
Murray Staab
Arthur Hall

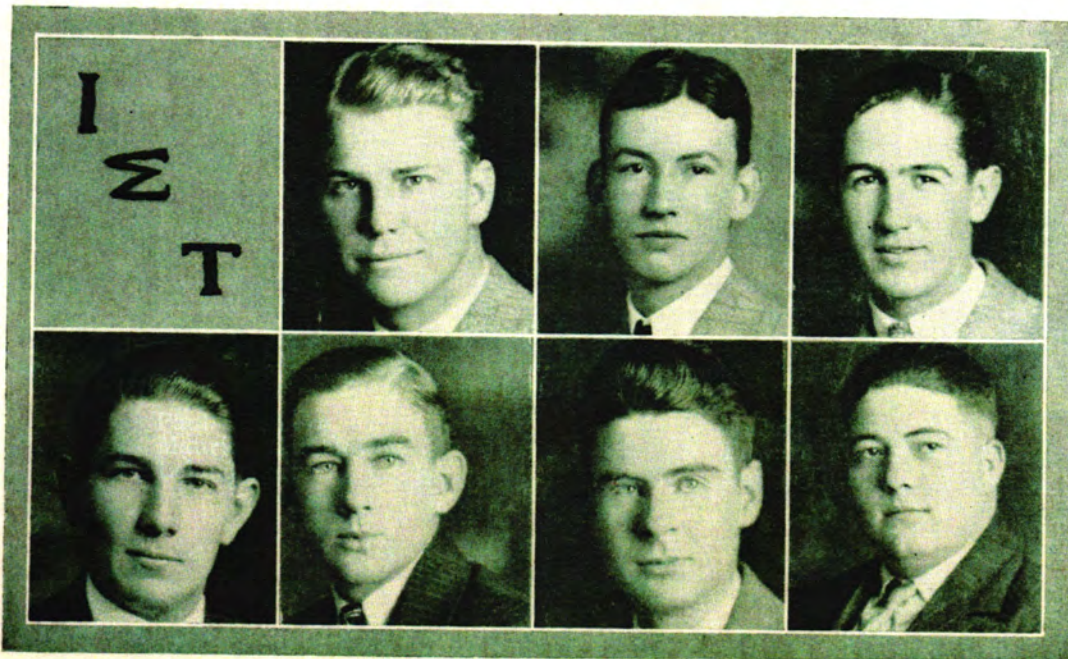
Joe Henbest
Bill Poteet
Ray Harp
Noel Conrad

Ernest Bensch

PLEDGES

Paul Sizemore
Maurice Carselowey
Leland Cotter

Harold Rust
Edward Foster
Burke Tuthill



First row (left to right)—Cunningham, Harp, Tedrow.
Second row—Staab, Conrad, Hall, Henbest.



FINE ARTS

WOMEN'S GLEE CLUB



B. PARKER

The Women's Glee Club of Northeastern Oklahoma Junior College under the direction of Miss Beulah Parker has enjoyed the most successful year since organization. Their initial appearance was made in assembly with a toast to Junior College followed by "Dainty Damasel", Novel Stebbins; and "Because You're You" (from the musical show "Red Mill") by Victor Herbert. Later the club appeared at the Rotary Club's banquet, Miami, Nowata, Fairland, Picher, Grove and Vinita high schools.

PERSONNEL

First Soprano—Lundy, Bigham, Goodwin, Wright, Cobban, Puryear.
Second Soprano—Williams, Bissell, Campbell. Alto—DeMier, Stephenson, Bigham.



Standing (right to left)—Bigham, DeMier, Campbell, Riddle, Cobban, Puryear.
Sitting—Parker, instructor; Williams, Bissell, Lundy, Bigham, Goodwin, Wright.

WOMEN'S SEXTETTE

The Women's Sextette is considered the best organization in the vocal department of the school.

PERSONNEL

First Soprano—Gladys Lundy, Ardis Maurine Cobban.
Tenor—Jean Bigham, Virginia Bissell.
Alto—Hazel Campbell, Thelma DeMier.

MIXED CHORUS

The Mixed Chorus of N. E. O. J. C. was organized in 1924 and directed by Charles A. Cale. Since 1925 it has been directed by Miss Beulah Parker. This season they offer in their repertoire, "Who Knows", by Ball; "College Days", from Burgomaster, and "Fraternity Men", musical novelty.



W. R. PARKER

PERSONNEL

Cobban, Puryear, Bigham, Bissell, Williams, Campbell, Goodwin, Wright, Bigham, DeMier, Lundy, Wyatt, Sizemore, Staab, Huff, Cotter, Stephenson and Cunningham.



Standing (left to right)—Riddle, Lundy, Whitney, Cunningham, Wyatt, Parker, Instructor; Sizemore, Staab, Huff, Cotter, DeMier, Bigham.
Sitting (left to right)—Cobban, Puryear, Bigham, Bissell, Williams, Campbell, Goodwin, Wright.

ORCHESTRA

The Junior College Orchestra, under the direction of W. R. Parker, has a membership of fourteen. The orchestra is one of the most popular organizations of the college. Their repertoire includes: "War March of the Priests" by Mendelsohn and "Mignonette" by Baumann.

PERSONNEL

Clarinets—Stephenson, Cunningham, Waldron.

Cornets—Henbest, Heaslet.

Saxophones—McMurtrey, Bigham, Carselowey, Bachmann.

Violins—Rust, Cross, Bigham.

Pianist—Bissell.



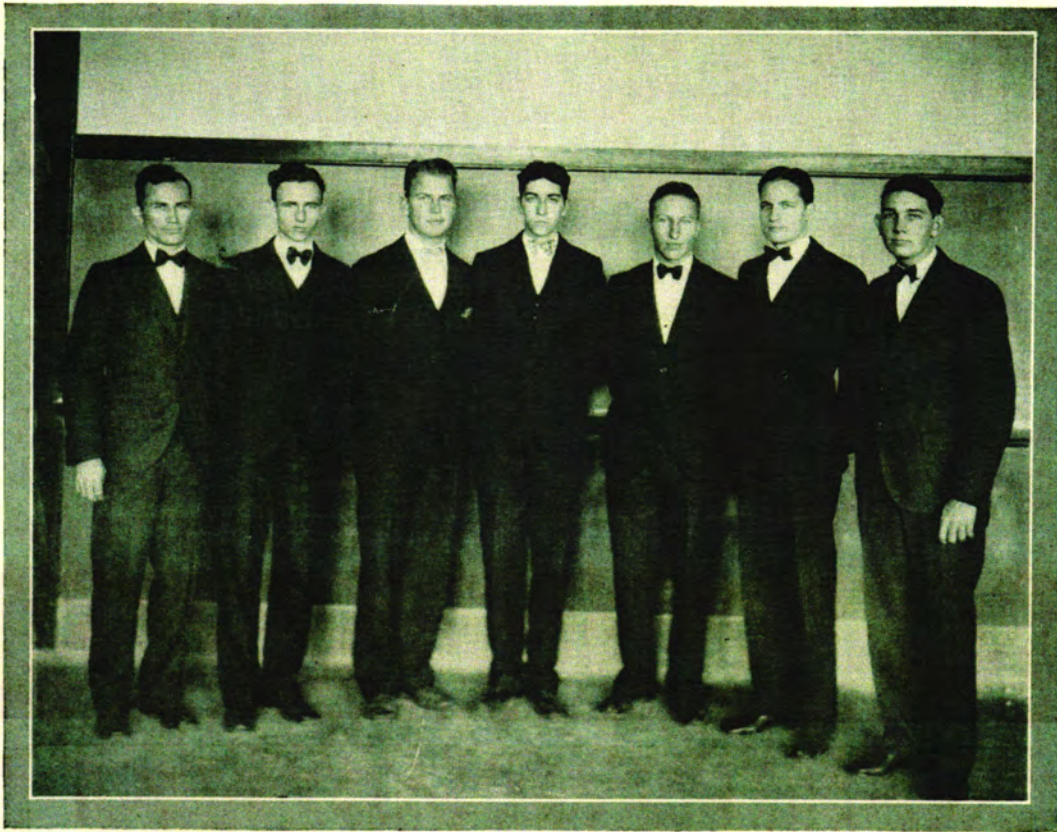
Standing (left to right)—Cunningham, Bachmann, Bigham, Heaslet, Henbest, Parker, Instructor.
Sitting (left to right)—McMurtrey, Carselowey, Poteet, Rust, Bissell.

MEN'S GLEE CLUB

The Men's Glee Club appeared on all programs given by the music department. Their most popular selections were: "Romeo in Georgia", by J. Frindle Scott; "Rolling Down to Rio"; "Song of Fellowship", by Gaul; "Sailor Chanteys", by Bartholomew.

PERSONNEL

Tenors—Cunningham, Paine, Tedrow, Harp, James, Cotter.
Bass—Marsh, Whitney, Staab, Huff, Wyatt.



Left to right—Whitney, Wyatt, Cunningham, Huff, Cotter, Sizemore, Staab.

PROGRAM GIVEN BY MUSIC DEPARTMENT

Spring 1929

WOMEN'S GLEE CLUB

- | | | | |
|----|------------------------------------|------------------|--|
| 1. | Junior College Toast | | |
| 2. | "Dainty Damsel" - - - - - | Novello Stebbins | |
| 3. | "Naughty Little Clock" - - - - - | - DeKoven | |
| | Reading—"Wheels of Time" - - - - - | Florence Barclay | |
| | Marian Cameron | | |

WOMEN'S SEXTETTE

- | | | | |
|----|---|---------------|------------|
| 1. | "When Song is Sweet" - - - - - | | Sans Souci |
| 2. | "Starlight Love" - - - - - | Lucien Dennis | |
| | Vocal Solo—"Spring" - - - - - | Parker | |
| | Beulah Parker | | |
| | Piano Solo—"Caprice Espagnol" - - - - - | Mozkowski | |
| | Virginia Bissell | | |
| | Vocal Solo—"Trees" - - - - - | Rasbach | |
| | Jean Bigham | | |

MIXED CHORUS

- | | | | |
|----|----------------------------|--|-----------|
| 1. | "Fraternity Men" - - - - - | | Robertson |
|----|----------------------------|--|-----------|

MIXED QUARTET

- | | | | |
|----|-------------------------------|--|------|
| 1. | "Gates of Gladness" - - - - - | | Rule |
|----|-------------------------------|--|------|

MIXED CHORUS

- | | | | |
|----|-------------------------------------|-------------|------|
| 1. | "Who Knows" - - - - - | | Ball |
| 2. | "Asleep in the Deep" - - - - - | Petrie | |
| 3. | "Will My Dream Come True" - - - - - | Popular Air | |
| 4. | "College Days" | | |



QUIRKS

CALENDAR—1928-29

1928—

September 11—

Rain! Today of all days. Everybody in halls. Sophs "sizing up" Freshies. Freshies going about in a daze.

September 12—

Freshies still asking questions of "all wise" Sophs.

September 13—

Still more questions. What's an hour???

September 14—

Regular school begins.

September 15—

Sigma Iota Chi announces pledges.

September 15—

Day before circus. Glee Club tryouts.

September 26—

Eta Upsilon Gamma pledge banquet.

September 29—

Y. W. C. A. party at Neva Lee's. Curtis speaks at fairgrounds. Pan-Hellenic organized.

October 9—

Sigma Iota Chi and Eta Upsilon Gamma entertained at Coleman home in Rockdale.

October 10—

Y. W. C. A. tag day—great success.

October 15—

39 Kampus Kats out to practice.

October 16—

Phi Theta Kappa initiation.

October 18—

First Y. W. C. A. luncheon—eats extraordinary. Overwhelming victory over Coffeyville—48 to 0. Hooray. Gamma steak fry.

October 19—

Holiday! Teachers' meeting at Muskogee.

October 23—

Sherman Rogers speaks at Chapel.

October 24—

Strains of "Sonny Boy" heard in various parts of the building.

October 25—

First meeting of Annual Staff and Student Council starts off with a bang! bang! Several "opinions" expressed.

October 26—

Boys leave for Bolivar victory—what happened to Chestnut? Nominations for Campus King and Queen.

October 30—

Annual drive begins—Hallowe'en party.

October 31—

Y. W. C. A. recognition service for the new girls.

November 1—

Frosh sell tags. Sophs hold meeting. Frosh pie supper. Sophs look gloomy.

- November 2—
Boys and Jennie and Loretta leave for Fayetteville.
- November 5—
Special assembly—class meetings. Y. W. C. A. party at Virginia's in honor of National Secretary.
- November 6—
No school—Grand! Wish elections would come more often. Hot competition with the chili lunches. What happened to the Sophs?
- November 7—
“Cooling board” again appears in Math. II classes. Glee Club girls have transom lowered as a result of their efforts (???) “Empty House” tryouts. Chem. Lab. was quite a “busting” affair.
- November 8—
Just one big election after another. Hoover and Curtis—then Cliff and Ardis Maurine.
- November 9—
Bacone Indians arrive. We win 28 to 6.
- November 12—
Special assembly—Armistice program. Mr. Commons gives splendid talk.
- November 14—
Girls Glee Club party at Miss Parker's.
- November 15—
Mr. Murphy says “Good morning” to his 9:00 o'clock Geology class with “Pop quiz”. Y. W. C. A. luncheon.
- November 19—
Usual noon hour congestion in music room.
- November 20—
Coronation party—grand success.
- November 21—
First day under our new sovereigns. Gamma actives entertain pledges at dinner.
- November 23—
Parsons bound! Did everybody get there? Ask Mr. Steed. We show Parsons our stuff—especially Bill Poteet while eating at the hotel. Return home without detours and with a 33 to 6 victory.
- November 24—
Sigma Iota Chi sorority entertains Gammas and Faculty at luncheon and musicale.
- November 26—
Dr. Puffer speaks at Chapel. Ticket selling drive for “Empty House”.
- November 27—
Full house at “Empty House”.
- November 28—
Day after Geology and Zoology exams. First lyceum number from 10 to 12. “No school till Monday.” Everybody thankful for Thanksgiving Day.
- December 3—
Big surprise—English III exam. Reavis back to school.
- December 4—
Day after night before—Football boys' weiner roast. Sigma actives entertain pledges with a waffle supper.

- December 7—
Math. II exam? Awful! School car accident. Spanish V exam?
Such troubles!
- December 18—
Y. W. C. A. Christmas party.
- December 19—
Most everybody gone "fluey".
- December 21—
Christmas vacation—a whole week!
- December 30—
Some college boys play "All Star" girls' team. "Hap" gets fouled
for holding.
- 1929—
- January 1—
Everybody grumbling 'cause we have to go to school. Gamma pledges
give actives a luncheon.
- January 4—
Our first basketball game. Lost 2 points. We'll make up for it, though.
- January 8—
Glee Club girls sing at Chapel and at Rotary luncheon.
- January 10—
Y. W. C. A. luncheon—pictures taken—much excitement. New
"Frat", Iota Sigma Tau.
- January 11—
Ash Davis, cartoonist, holds everybody's attention at Chapel. Glee
Club pictures taken. Helen LaGrone terribly excited about
something(?) All aboard for Claremore!
- January 14—
Everybody begins to look serious and studious.
- January 15—
The day approaches!
- January 16—
Still nearer and here for Math. II sections.
- January 17—
Exams galore! "Did you flunk it?"
- January 24—
Roberts Ensemble gives program. Why were Mr. Steed and Mr.
Murphy down at N. E. O. station? Ask another.
- January 25—
Last day of enrolling.
- January 28—
Back again! Mr. Whitney carefully locks his desk and leaves keys
in the drawer. All a result of that Trig. enrollment.
- January 29—
Phi Theta Kappa's practice play.
- January 30—
First "Hell Day" for sorority pledges.
- January 31—
Looks sorta like "Rat Day".
- February 1—
Several steps get a thorough (???) scrubbing and sweeping. Sorority
pledges initiated.

- February 5—
Phi Theta Kappa play presented at Chapel. New elects announced.
- February 6—
Orchestra and Mixed Chorus go to Fairland.
- February 12—
Phi Theta Kappa pledging. Jennie and Boozy head kodaking party.
- February 13—
Unusual happening!—Reavis rides to school with Lorena.
- February 14—
Gamma rush party.
- February 15—
Sigma rush party.
- February 18—
Stunt nite. Phi Theta Kappa first prize winners, "Red Heads" and "L. D. B.'s" show their stuff.
- February 19—
Sororities pledge.
- February 20—
Phi Theta Kappa initiation.
- February 21—
"Step On It" practice in full swing.
- February 22—
Holiday! Everybody thankful "George" had a birthday. Boys win from Ozark Wesleyan.
- February 25—
Mary Lou and Hugh stroll slowly through the halls. Iota Sigma Tau party.
- February 26—
Mixed Chorus appears in assembly. Mr. and Mrs. Staab make their debut and hastily exit.
- February 27—
Tennis courts again put into use. Annual Staff takes hour off to cuss and discuss O. M. A. victory 31 to 21. Sigma Iota Chi entertains Iota Sigma Tau.
- February 28—
Glee Clubs go to High School.
- March 1—
"Step On It" cast still stepping on it.
- March 4—
We hear inauguration.
- March 5—
Lorin Campbell at Chapel. "Jerry" gave interesting information, eh, Murray?
- March 6—
Dress rehearsal for "Step On It". Virginia Bissell "faws down and goes boom!"
- March 7—
Big Parade up town. "Step On It" presented.
- March 8—
Boys go to Joplin tournament.
- March 11—
Mr. Floyd, Mr. Whitney and Miss Moore all absent. Why couldn't we have had all our classes under them?

- March 12—
Lyle and Murray compete in chapel. "Step On It" cast goes to Baxter.
- March 13—
"Rat Day" Sovereigns elected.
- March 15—
Mixed Chorus leaves for Nowata. We go over big!
- March 17—
Debaters and Mr. DeFord leave for Muskogee.
- March 19—
Memorable day for 1929 Rats.
- March 20—
Debaters "bring home bacon" from Bacone.
- March 21—
L. D. B. initiation and "after effects" are chief topic of the day. "Step On 'Ers" go to Fairland.
- March 25—
Contesters leave for Norman. Three teachers go, too, but leave plenty of assignments behind. Such luck.
- March 28—
Y. W. C. A. Easter luncheon. Normaners return very quietly.
- March 29—
Gammas give Football Feed in Home Ec. room.
- April 1—
No time for much foolin'.
- April 2—
Miss Parker still sick with "flu". Study hoppers get a rest (?) from Glee Club "Airs".
- April 5 and 6—
Fine Arts Contest at H. S.
- April 12—
Mixed Chorus goes to Grove. Short cut? Ask those in school car.
- April 19—
Tennis Tourney drowned out.
- April 24—
Glee Clubs go to Commerce.
- May 26—
Baccalaureate Services at Baptist Church. Dr. Chancellor.
- May 30—
Commencement Exercises, Dr. Henry E. Bennett, Pres., A. & M. College, Stillwater.

He—"Why are you inviting only married people to our wedding?"
Eva Wilson—"Don't you understand? All the presents will be clear profit."

Erma—"Where'd you get the flivver?"

Bill Poteet—"Oh, it just crawled up on the lawn and died."

Helen LaGrone (at football game)—"Who is this fellow Rah they're always cheering?"

PHI THETA KAPPA MEMBERS

Hazel Campbell is our red-head,
Mary Wynne is our sec.
When you want to giggle turn to
Gladys Lundy, she's our pep.
Clarence Martin is Mr. Faculty,
Emerson is our football star.
As for work, just ask Jimmy,
He'll tell you Mr. Work's not far.
Mildred Hawthorne's not discouragement,
Only when she has to be.
As for Student Honor? No sir!
I'm quite sure it can't be me.
Eva Hollis was "Miss" Goodtime,
But she's "Mrs." Goodtime now.
Virginia is our efficient president
And oh, boy! How!
Lola Records was unable
To take part in our play,
But she is Phi Theta Kappa
At all times, in every way.
Miss Scholarship is Juanita
And my how she does work!
But a member of Phi Theta
Hasn't ever been known to shirk.
Then there's our two beloved sponsors—
Mr. Whitney and Miss Vann,
For official car of Phi Theta Kappa
We use Mr. Whitney's sedan.
Miss Vann's a shark at washing dishes
She takes to water just like fishes!
But it takes Mr. Floyd to crack a joke
At others his fun he likes to poke.
Now Phi Theta Kappa members don't be offended
If your name appears in this,
For my nonsense now is ended
And I beg you to dismiss—
Just "me"
ALTA V. ROWLEY.

Mr. Steed—"Pete, what are you rubbering at?"
Pete—"I'm stretching my imagination."

"Yes", said Mr. Steed, "It was funny enough to make a donkey laugh.
I laughed till I cried."

Neva Lee—"And they are keeping their engagement a secret?"
Ardis Maurine—"Well, that's what they're telling everybody."

Mr. Whitney—"Any questions now?"
Charles—"Yes, what course is this?"

Lucille—"Isn't Ray graceful though? I like to watch him. He's so
light on his feet."

Murray—"Just a case of both ends balancing."

TRAGEDY IN ROOM 27

Young Lochinvar came into class
His seat he then got in it,
Immediately he arose again
And said, "I'll be back in a minute".

His teacher said, "Where are you going?"
Her name was "Two Gun Moore".
Both guns leaped up to meet her hands,
But he had slammed the door.

Then out upon the tennis courts
He wends his weary way,
And finding young Fritz Bachmann there,
He passed the time of day.

Then back into the classroom
He hied him with much haste,
His head hung low upon his chest,
His spirit was much chaste.

The teacher eyed him balefully,
This was a bad omen,
And jerking pistols from her belt
She aimed at his abdomen.

"Oh! spare me teacher, darling,
I did it but in fun."
The teacher merely glared at him
And leveled out her gun.

The teacher thought and thought and thought,
The atmosphere grew tenser,
And with a look that bode no good
She put up the lead dispenser.

"I won't waste bullets on you,
You're just a silly nut!"
So quickly drawing out her knife
She gave him a double cut!

—Wray Paine.

Miss Moore—"If you're going to be indiscreet, be discreet about it."

Emerson—"What a dirty look he gave me."

Arthur—"Gave you nothing; you've always had that dirty look."

Virginia—"Let's go on a hiking trip."

Jenny—"No, motoring makes me sick."

Alma Lee—"Let's play bridge for a tenth of a cent."

Mary—"Don't be foolish, they aren't making coins that small."

Pete—"Where do you work?"

Hap—"In a mint factory."

Pete—"Why aren't you working now?"

Hap—"We're making the holes today."

SOLILOQUY

Miss Moore was once a friend of mine, a friend who could be trusted;
But now she has done wrong by me, and so the friendship's busted.
One day I asked a favor, she granted it sure thing,
So I ran out to tennis play, until the bell should ring.
The bell rang out, I heard it not, I was too interested;
And I thought Miss Moore's friendship could fearlessly be trusted.
The game then ended, I returned, all blithe and unsuspecting;
Miss Moore was on the warpath though, and she was scalp-collecting.
"You have sinned, I will uphold the law unto the letter",
Quoth this new, unrelenting Henrietta.
I left the room and fled out doors, and fell upon the lawn;
My faith in all humanity, and trust in humans gone.
And oft when on my couch I lie, in vacant and in pensive mood;
I see those two cuts before my eye, I sure need solitude.
—Wray Paine.

A FRESHMAN'S SOLILOQUY

"I've been bawled out,
Balled up, held up,
Held down, Bull-
Dozed, black-jacked,
Walked on, cheated,
Squeezed and mooched,
I've been stuck for
War tax, annual tax,
Class tax, carpet tax,
and syntax. I've worked
Like thunder. Lost
All I had and things
I didn't have; and
Because I won't spend,
Or lend, all of the
Little I can beg,
Borrow or steal, I've
Been talked to, talked
About, lied to, lied
About, held up, hung,
Robbed, and nearly
Ruined; and the only
Reason I'm sticking around
Now is to see what the
Thunder will happen next.

Carl—"Is Clarence a good detective?"

Ernest—"He's the kind that would hang his coat on the door knob
and try to look through the keyhole."

Mr. Steed—"Does this question puzzle you?"

Murray—"Not a bit, it's the answer that has got my goat."

WE WONDER

If any girl was ever shocked at Wray Paine?
Who owns the Junior College; Floyd or Riddle?
If Marion likes pledge court?
Why is the Y. W. C. A.?
If Helen Lohmann is as innocent as she looks?
Why the members of the orchestra shut their eyes when Mr. Younger made their pictures?
How Murray could forget so soon?
If Helen LaGrone actually saw the Claremore game?
Why Ed Foster drops the girls so hard—for particulars see Leland or Beulah F.
Why there is never any alcohol in the Chem. lab.?
Who thinks she is the most popular girl in school; Jenny or Jenny?
Who has the worst time presiding over their faculty meetings—Ted-row or Floyd?
Who sings "I learned about crutches from you"?
Who invented the sentence, "I'm sorry, but it's too late for the annual"?

THE EXPERIENCE OF A FRESHMAN

You see a beautiful girl walking down the street. She is, of course, feminine. If she is singular, you become nominative. You walk across to her, changing to the verbal, and then become dative. If she is not objective, you become plural. You walk home together. Her mother is accusative, and you become imperative. Her brother is an indefinite article. You walk in and sit down. You talk of the future and she changes the subject. The subject, of course, is understood. You kiss her and she becomes objective. Her father becomes present and you become passive.

FINIS.

Mr. DeFord—"Son, your mother has told me you have been misbehaving. I shall have to punish you tonight."

Clay Jr.—"Not tonight, father, I shall be too busy with my lessons, but speak to me again tomorrow regarding an appointment."

Pete—"Why did you stop singing in the choir?"

Wray Paine—"Because one day I didn't sing and someone asked if the organ had been fixed."

Prof. Murphy—"A fool can ask more questions than a wise man can answer."

Fern Branstetter—"No wonder so many of us flunk our exams."

Hap Dunlap says a track suit is not a legal battle between two railroads.

"What is the matter with Clarence?"

"Oh, he just got a shine and then remembered that they were his roommate's shoes."

Joe—"You know, Bill, for two cents I'd throw this penny away."

OUR OWN WHO'S WHO

Virginia Jones—A good sport.
Emerson Price—The Student Prince.
Beulah Foster—Everybody's Pet.
Helen LaGrone—Love 'em and Leave 'em.
Wray Paine—Our hottest necker.
Lucille and Murray—Mr. and Mrs.
Marian Cameron—Her opinions!

Little Alma tells us she skates quite well,
But what she skates on she'll never tell.
It isn't her feet, and it isn't her head—
Probably some things are better left unsaid.
—Whirlwind.

Eva has come hither eyes
The kind that make you faint,
But when you ask her for a date
Be where her husband ain't.
—Virginia Reel.

Violets are green,
Roses are pink,
Immediately after
The thirteenth drink.

I danced her by the stag line,
I did, I did, I did.
We danced right by the stag line,
No kid, no kid, no kid.
I saw the fellows glancing,
Oh why, Oh why, Oh why,
Did they not stop our dancing,
The chaperone and I.
—Whirlwind.

TO W. P.—
Professor McDuff
Is a guy I hate,
He gives a cut
For being late.

Charles C.—“Well, I suppose I must marry Isabelle to satisfy her.”
Wayne—“Didn't know she wanted to get married.”
Charles—“She said she wouldn't marry until she found a perfect man.”

Burke—"Yes, Dad, I'm a college graduate now. Watch me go out and set this little old world of ours on fire."

Mr. Tuthill—"I suppose you expect me to give you the matches?"

Carl—"Walt's a good kid, isn't he?"

Clarence—"Yes, if he had some brains he'd be a smart boy, if he knew how to use them."

Alfred—"Noises in my head keep me awake."

Orville—"That's impossible."

Alfred—"Why so?"

Orville—"Because, you can't transmit sound through a vacuum."

Ray—"They say Murray is wandering in his mind."

Jimmie—"That's all right. He won't go far."

Roommate—"I wish you wouldn't whistle when you're studying."

Second Roommate—"I wasn't studying, I was whistling."

Mary Lou—"I'll be yours on one condition."

Clifford—"Easy! I entered college on six."

Lucille—"Say, it's twelve o'clock, do you think you can stay here all night?"

Murray—"Well, I'll have to telephone mother first."

This space was reserved for a crack about a Certain Organization. We have decided not to make this crack about this Certain Organization, because we feel that this Certain Organization has ceased to be a campus joke and has become a campus problem.

Prof. DeFord—"This exam will be conducted on the Honor System. Please take seats three apart and in alternate rows."

Dean Drake (to Chemistry Class)—"What is the origin of slow motion?"

Sweet Sigma—"An L. D. B. reaching for the pay-check at Hadleys."



APPRECIATION

The following firms and individuals are those to which the Northeastern Oklahoma Junior College is gratefully indebted for the success of the "JAYSEER" of 1929.

- | | |
|---|--|
| <p>C. R. Anthony Co.
 A. J. Lampkin, County Clerk
 B. & K. Clothing Co.
 Bell Telephone Co.
 *Berry and White Motor Co.
 **Bomford Bros. Insurance Co.
 *Brunswick Billiard Parlor
 ***George L. Coleman
 ***Commerce Mining & Royalty Co.
 *Cooper Undertaking Co.
 City Radiator and Tin Shop
 City Commissioners
 **R. G. Cunningham Oil Co.
 Dr. Craig, Physician
 Coyne Lumber Co.
 Coca Cola Bottling Works
 **Consumers Gas Co.
 Dept. of Public Utilities
 D. T. Watters, County Sheriff
 Dr. W. Hopkinson, Dentist
 Dr. Malone, Osteopath
 Ellis Garage
 Faulkenberrys Store
 ***First National Bank
 *George D. Hope Lumber Co.
 *H. E. Ketcham Lumber Co.
 Hiram McBee
 *Hotel Miami
 Huff Motor Co.
 *Hadley Drug Co.
 Harrah-O'Bannon Drug Co.
 Henry Saft, Furniture
 *Hoffman Music Co.
 *Hub Clothing Co.
 Joe Weir</p> | <p>Jim K. Fribley's
 Woodland Farm Dairy
 Jones Bros., Jewelers
 James Tire Shop
 John C. Linton
 **J. C. Penney Co.
 G. M. London
 Miami Chat Co.
 Millner and Fribley
 Montgomery Ward & Co.
 ***N. E. O. Railroad
 ***News Record
 *O. K. Plumbing Co.
 ***Ottawa Co. National Bank
 Ottawa Creameries, Inc.
 ***O. T. Dixon Ptg. and Sta. Co.
 *Ottawa County Motor Co.
 Peck Robinson Clothing Co.
 *Perry Porter, County Attorney
 *Photo Abstract Co.
 Plannett and Farrar, Cleaners
 Poteet Barber Shop
 *Robards Electric Co.
 *Rush Chevrolet Co.
 *Reid Clothing Co.
 **Sanders-Ridgway
 *G. W. Sapp Insurance Agency
 Savoy Cleaners
 *Scott Dry Goods Co.
 *The Mabon Shoppe
 The Bargain Store
 W. R. Kreeger Transfer Co.
 A. C. Wallace, Lawyer
 **Youngers Studio</p> |
|---|--|

***Equivalent to one full page of advertising.

**Equivalent to one-half page of advertising.

*Equivalent to one-fourth page of advertising.

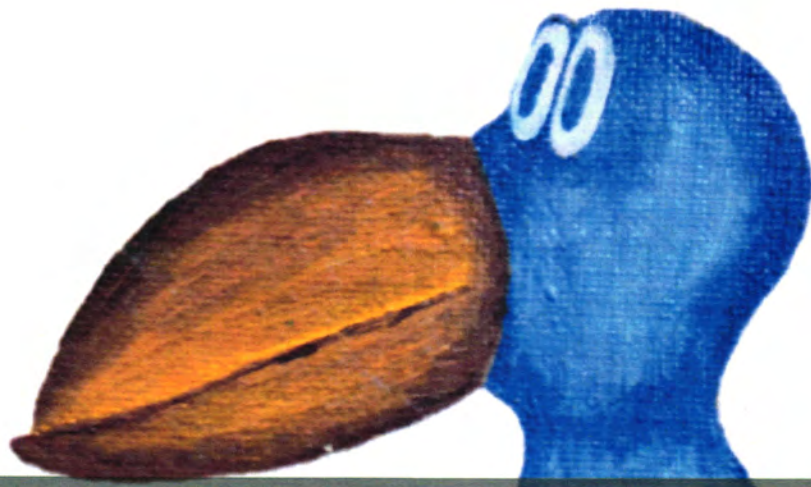
No star equal to less than one-fourth page of advertising.



**CERTAINLY-
SOUTHWESTERN
ENGRAVING COMPANY**

FORT WORTH
DALLAS
HOUSTON
BEAUMONT
WICHITA FALLS
AMARILLO
TULSA
ATLANTA
MACON





NEO A&M College Archive Collection

The Viking – the NEO A&M College Yearbook

Digital copies of The Viking, Northeastern Oklahoma A&M College's annual yearbook, are available in .pdf format on the NEO website for non-commercial purposes only. Scans were created using the best available editions; where stains, color-fading, and contributed marks (usually signatures) were visible on the original they also appear in the digital copy. The edge of some pages in oversized editions may be partially lost due to width limitations on the scanning bed. NEO yearbook editions that do not appear on the website are not part of the collection at present. If you would like to donate a yearbook, please contact the NEO Library.